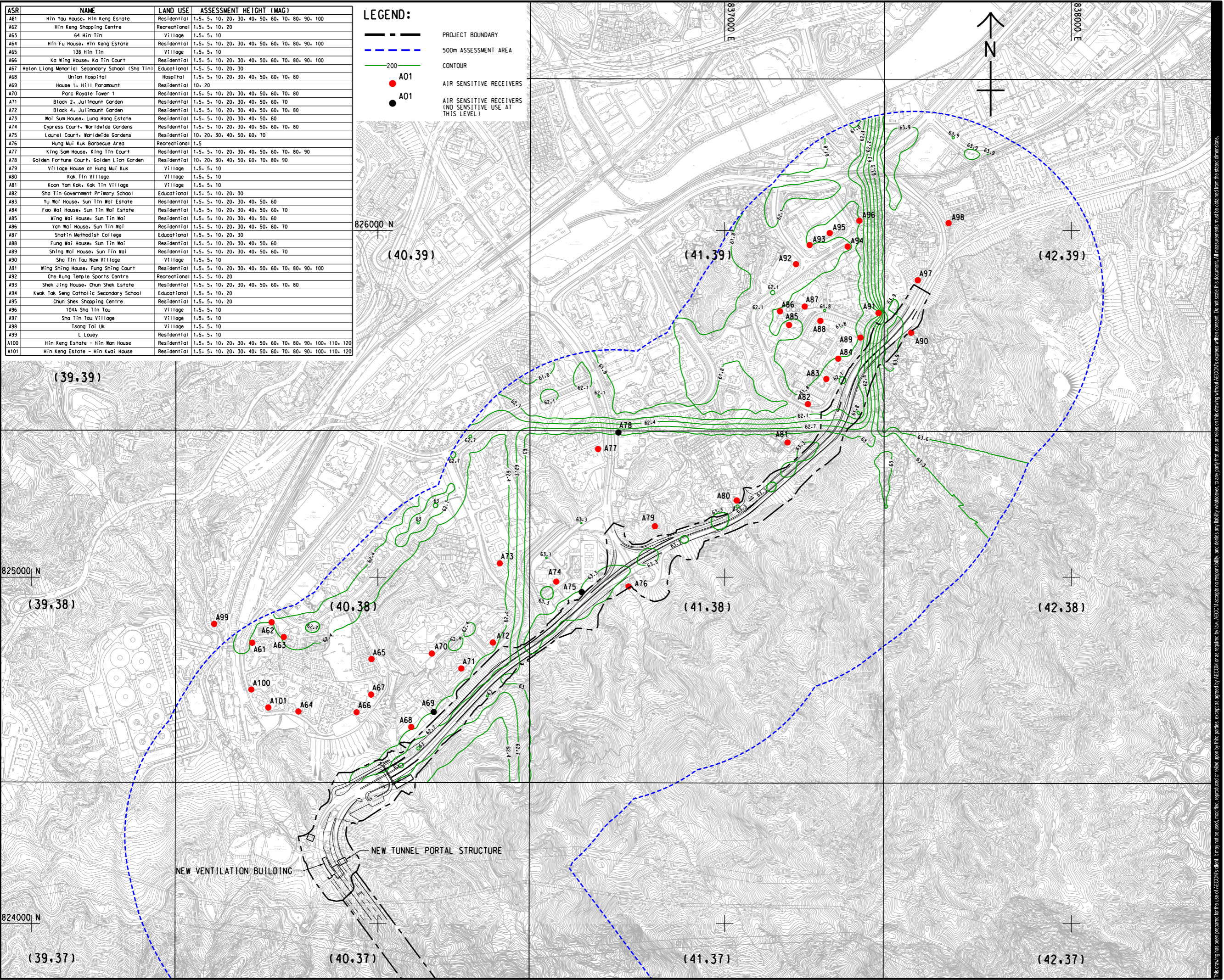


ASR	NAME	LAND USE	ASSESSMENT HEIGHT (MAG)
A61	Hin Yau House, Hin Keng Estate	Residential	1.5, 5, 10, 20, 30, 40, 50, 60, 70, 80, 90, 100
A62	Hin Keng Shopping Centre	Recreational	1.5, 5, 10, 20
A63	64 Hin Tin	Village	1.5, 5, 10
A64	Hin Fu House, Hin Keng Estate	Residential	1.5, 5, 10, 20, 30, 40, 50, 60, 70, 80, 90, 100
A65	138 Hin Tin	Village	1.5, 5, 10
A66	Ka Wing House, Ka Tin Court	Residential	1.5, 5, 10, 20, 30, 40, 50, 60, 70, 80, 90, 100
A67	Helen Liang Memorial Secondary School (Sha Tin)	Educational	1.5, 5, 10, 20, 30
A68	Union Hospital	Hospital	1.5, 5, 10, 20, 30, 40, 50, 60, 70, 80
A69	House 1, Hill Paramount	Residential	10, 20
A70	Parc Royale Tower 1	Residential	1.5, 5, 10, 20, 30, 40, 50, 60, 70, 80
A71	Block 2, Julimount Garden	Residential	1.5, 5, 10, 20, 30, 40, 50, 60, 70
A72	Block 4, Julimount Garden	Residential	1.5, 5, 10, 20, 30, 40, 50, 60, 70, 80
A73	Wai Sum House, Lung Hang Estate	Residential	1.5, 5, 10, 20, 30, 40, 50, 60
A74	Cypress Court, Worldwide Gardens	Residential	1.5, 5, 10, 20, 30, 40, 50, 60, 70, 80
A75	Laurel Court, Worldwide Gardens	Residential	10, 20, 30, 40, 50, 60, 70
A76	Hung Mui Kuk Barbecue Area	Recreational	1.5
A77	King Sam House, King Tin Court	Residential	1.5, 5, 10, 20, 30, 40, 50, 60, 70, 80, 90
A78	Golden Fortune Court, Golden Lion Garden	Residential	10, 20, 30, 40, 50, 60, 70, 80, 90
A79	Village House at Hung Mui Kuk	Village	1.5, 5, 10
A80	Kak Tin Village	Village	1.5, 5, 10
A81	Koon Yam Kok, Kak Tin Village	Village	1.5, 5, 10
A82	Sha Tin Government Primary School	Educational	1.5, 5, 10, 20, 30
A83	Yu Wai House, Sun Tin Wai Estate	Residential	1.5, 5, 10, 20, 30, 40, 50, 60
A84	Foo Wai House, Sun Tin Wai Estate	Residential	1.5, 5, 10, 20, 30, 40, 50, 60, 70
A85	Wing Wai House, Sun Tin Wai	Residential	1.5, 5, 10, 20, 30, 40, 50, 60
A86	Yan Wai House, Sun Tin Wai	Residential	1.5, 5, 10, 20, 30, 40, 50, 60, 70
A87	Shatin Methodist College	Educational	1.5, 5, 10, 20, 30
A88	Fung Wai House, Sun Tin Wai	Residential	1.5, 5, 10, 20, 30, 40, 50, 60
A89	Shing Wai House, Sun Tin Wai	Residential	1.5, 5, 10, 20, 30, 40, 50, 60, 70
A90	Sha Tin Tau New Village	Village	1.5, 5, 10
A91	Wing Shing House, Fung Shing Court	Residential	1.5, 5, 10, 20, 30, 40, 50, 60, 70, 80, 90, 100
A92	Che Kung Temple Sports Centre	Recreational	1.5, 5, 10, 20
A93	Shek Jing House, Chun Shek Estate	Residential	1.5, 5, 10, 20, 30, 40, 50, 60, 70, 80
A94	Kwok Tak Seng Catholic Secondary School	Educational	1.5, 5, 10, 20
A95	Chun Shek Shopping Centre	Residential	1.5, 5, 10, 20
A96	104A Sha Tin Tau	Village	1.5, 5, 10
A97	Sha Tin Tau Village	Village	1.5, 5, 10
A98	Tsang Tai Uk	Village	1.5, 5, 10
A99	L Louey	Residential	1.5, 5, 10
A100	Hin Keng Estate - Hin Wan House	Residential	1.5, 5, 10, 20, 30, 40, 50, 60, 70, 80, 90, 100, 110, 120
A101	Hin Keng Estate - Hin Kwai House	Residential	1.5, 5, 10, 20, 30, 40, 50, 60, 70, 80, 90, 100, 110, 120

**LEGEND:**

- PROJECT BOUNDARY
- 500m ASSESSMENT AREA
- 200 CONTOUR
- A01 AIR SENSITIVE RECEIVERS
- A01 AIR SENSITIVE RECEIVERS (NO SENSITIVE USE AT THIS LEVEL)



**PROJECT**  
 IMPROVEMENT OF LION ROCK TUNNEL - INVESTIGATION

**CLIENT**  
 路政署  
 HIGHWAYS DEPARTMENT

**CONSULTANT**  
 AECOM Asia Company Ltd.  
 www.aecom.com

**SUB-CONSULTANTS**  
 分列工程顧問公司

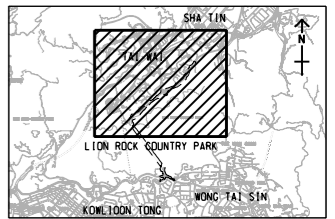
**ISSUE/REVISION**

IR	DATE	DESCRIPTION	CHK.

**STATUS**  
 10/17

**SCALE** DIMENSION UNIT  
 1:10000 METRES

**KEY PLAN** A3 1:200000



**PROJECT NO.** AGREEMENT NO.  
 60604728 CE 48/2018(HY)

**SHEET TITLE**  
 10th HIGHEST CUMULATIVE DAILY RSP CONCENTRATION (µg/m³) at 1.5 mAG, SHATIN (YEAR 2034)

**SHEET NUMBER**  
 60604728/R42b/FIGURE 3.38

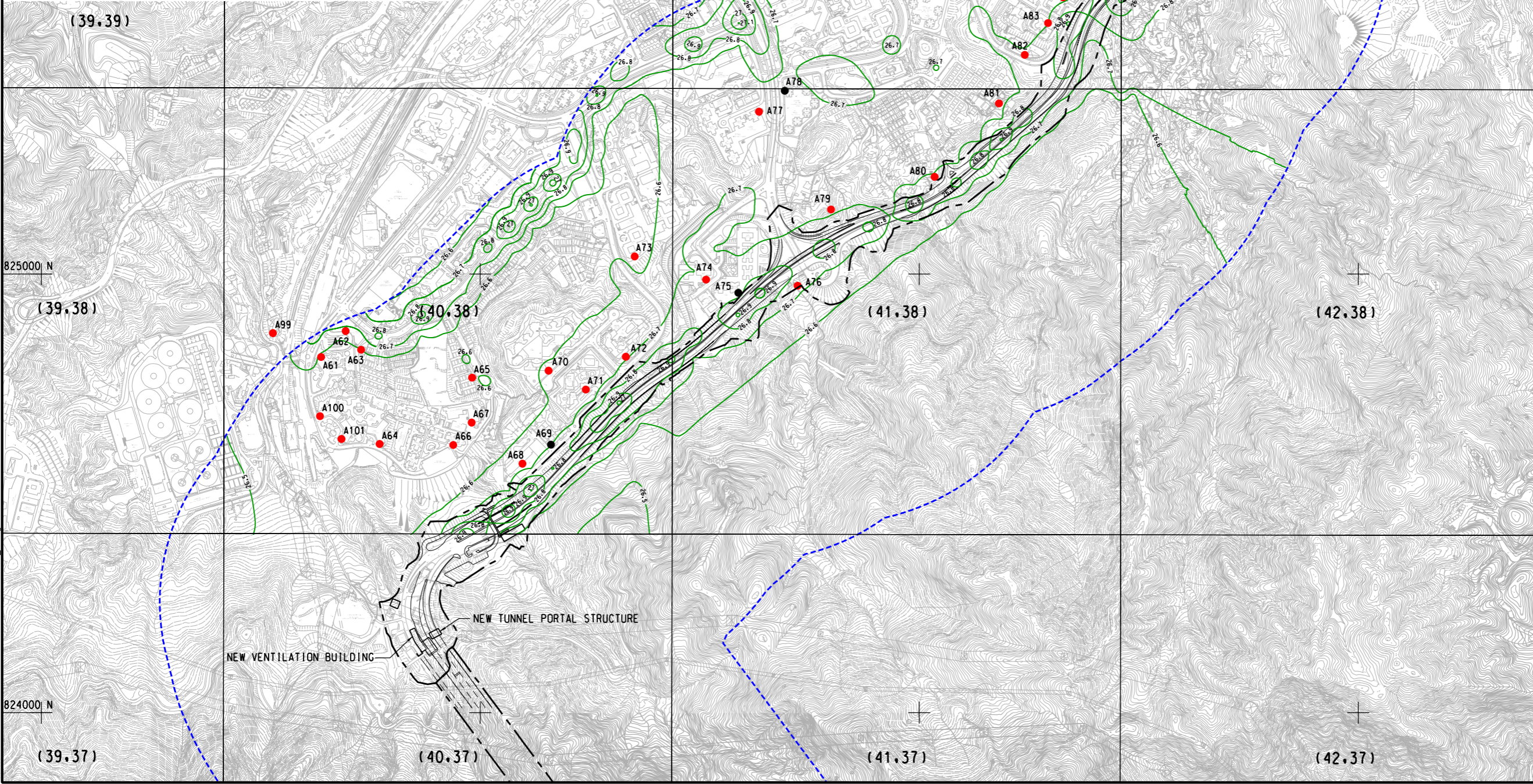
This drawing has been prepared for the use of AECOM's client. It may not be used, modified, reproduced or relied upon by third parties, except as agreed by AECOM or as required by law. AECOM accepts no responsibility, and disclaims any liability whatsoever, for any part, that is used or relied on in this drawing without AECOM's express written consent. All measurements must be obtained from the stated dimensions.



ASR	NAME	LAND USE	ASSESSMENT HEIGHT (MAG)
A61	Hin Yau House, Hin Keng Estate	Residential	1.5, 5, 10, 20, 30, 40, 50, 60, 70, 80, 90, 100
A62	Hin Keng Shopping Centre	Recreational	1.5, 5, 10, 20
A63	64 Hin Tin	Village	1.5, 5, 10
A64	Hin Fu House, Hin Keng Estate	Residential	1.5, 5, 10, 20, 30, 40, 50, 60, 70, 80, 90, 100
A65	138 Hin Tin	Village	1.5, 5, 10
A66	Ka Wing House, Ka Tin Court	Residential	1.5, 5, 10, 20, 30, 40, 50, 60, 70, 80, 90, 100
A67	Heien Liang Memorial Secondary School (Sha Tin)	Educational	1.5, 5, 10, 20, 30
A68	Union Hospital	Hospital	1.5, 5, 10, 20, 30, 40, 50, 60, 70, 80
A69	House 1, Hill Paramount	Residential	10, 20
A70	Parc Royale Tower 1	Residential	1.5, 5, 10, 20, 30, 40, 50, 60, 70, 80
A71	Block 2, Julimount Garden	Residential	1.5, 5, 10, 20, 30, 40, 50, 60, 70
A72	Block 4, Julimount Garden	Residential	1.5, 5, 10, 20, 30, 40, 50, 60, 70, 80
A73	Wai Sun House, Lung Hong Estate	Residential	1.5, 5, 10, 20, 30, 40, 50, 60
A74	Cypress Court, Worldwide Gardens	Residential	1.5, 5, 10, 20, 30, 40, 50, 60, 70, 80
A75	Laurel Court, Worldwide Gardens	Residential	10, 20, 30, 40, 50, 60, 70
A76	Hung Mui Kuk Barbecue Area	Recreational	1.5
A77	King Sam House, King Tin Court	Residential	1.5, 5, 10, 20, 30, 40, 50, 60, 70, 80, 90
A78	Golden Fortune Court, Golden Lion Garden	Residential	10, 20, 30, 40, 50, 60, 70, 80, 90
A79	Village House at Hung Mui Kuk	Village	1.5, 5, 10
A80	Kak Tin Village	Village	1.5, 5, 10
A81	Koon Yam Kok, Kak Tin Village	Village	1.5, 5, 10
A82	Sha Tin Government Primary School	Educational	1.5, 5, 10, 20, 30
A83	Tu Wai House, Sun Tin Wai Estate	Residential	1.5, 5, 10, 20, 30, 40, 50, 60
A84	Foo Wai House, Sun Tin Wai Estate	Residential	1.5, 5, 10, 20, 30, 40, 50, 60, 70
A85	Wing Wai House, Sun Tin Wai	Residential	1.5, 5, 10, 20, 30, 40, 50, 60
A86	Yan Wai House, Sun Tin Wai	Residential	1.5, 5, 10, 20, 30, 40, 50, 60, 70
A87	Shatin Methodist College	Educational	1.5, 5, 10, 20, 30
A88	Fung Wai House, Sun Tin Wai	Residential	1.5, 5, 10, 20, 30, 40, 50, 60
A89	Shing Wai House, Sun Tin Wai	Residential	1.5, 5, 10, 20, 30, 40, 50, 60, 70
A90	Sha Tin Tau New Village	Village	1.5, 5, 10
A91	Wing Shing House, Fung Shing Court	Residential	1.5, 5, 10, 20, 30, 40, 50, 60, 70, 80, 90, 100
A92	Che Kung Temple Sports Centre	Recreational	1.5, 5, 10, 20
A93	Shek Jing House, Chun Shek Estate	Residential	1.5, 5, 10, 20, 30, 40, 50, 60, 70, 80
A94	Kwok Tak Seng Catholic Secondary School	Educational	1.5, 5, 10, 20
A95	Chun Shek Shopping Centre	Residential	1.5, 5, 10, 20
A96	104A Sha Tin Tau	Village	1.5, 5, 10
A97	Sha Tin Tau Village	Village	1.5, 5, 10
A98	Tsang Tai Uk	Village	1.5, 5, 10
A99	L Lauy	Residential	1.5, 5, 10
A100	Hin Keng Estate - Hin Wan House	Residential	1.5, 5, 10, 20, 30, 40, 50, 60, 70, 80, 90, 100, 110, 120
A101	Hin Keng Estate - Hin Kwai House	Residential	1.5, 5, 10, 20, 30, 40, 50, 60, 70, 80, 90, 100, 110, 120

**LEGEND:**

- PROJECT BOUNDARY
- 500m ASSESSMENT AREA
- 200 CONTOUR
- A01 AIR SENSITIVE RECEIVERS
- A01 AIR SENSITIVE RECEIVERS (NO SENSITIVE USE AT THIS LEVEL)



**AECOM**

PROJECT  
IMPROVEMENT OF LION ROCK TUNNEL - INVESTIGATION

CLIENT  
**路政署 HIGHWAYS DEPARTMENT**

CONSULTANT  
AECOM Asia Company Ltd.  
www.aecom.com

SUB-CONSULTANTS  
分列工程顧問公司

**ISSUE/REVISION**

IR	DATE	DESCRIPTION	CHK.

**STATUS**

**SCALE**      **DIMENSION UNIT**

A3 1: 10000      METRES

**KEY PLAN**      A3 1: 200000

**PROJECT NO.**      **AGREEMENT NO.**

60604728      CE 48/2018(HY)

**SHEET TITLE**

CUMULATIVE ANNUAL RSP CONCENTRATION ( $\mu\text{g}/\text{m}^3$ ) at 1.5 mAG, SHATIN (YEAR 2034)

**SHEET NUMBER**

60604728/R42b/FIGURE 3.39

This drawing has been prepared for the use of AECOM's client. It may not be used, modified, reproduced or relied upon by third parties, except as agreed by AECOM or as required by law. AECOM accepts no responsibility, and disclaims any liability whatsoever, for any part, that is used or relied on in this drawing without AECOM's express written consent. All measurements must be obtained from the stated dimensions.



ISO A1 594mm x 841mm

Approved:

Checked:

Designer:

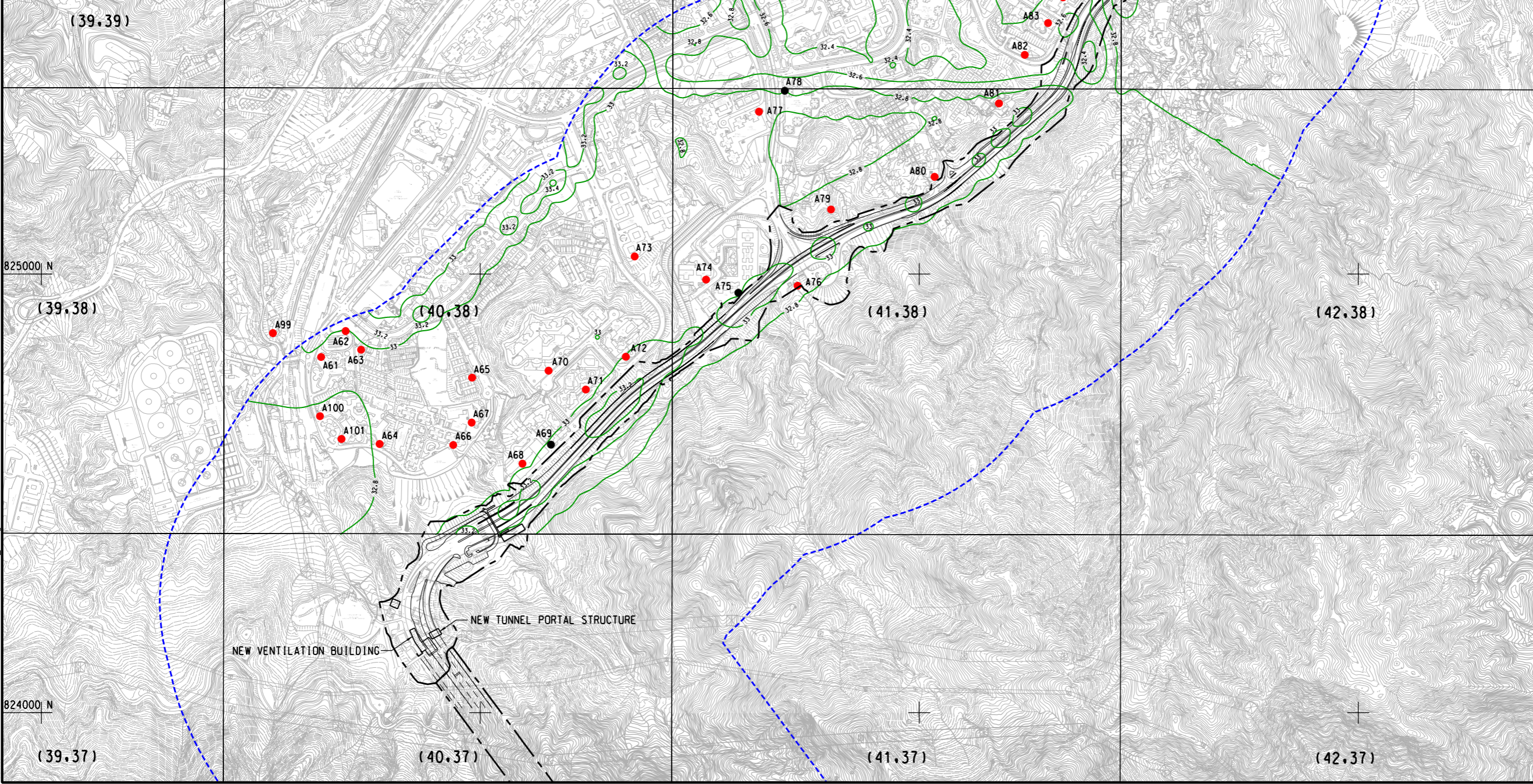
Project Management Initials:

2022/7/28  
 PATH PROJECTS/60604728/DRAWING/REPORT/42b/42b\_840.dgn  
 Plot File by: ZHLZ

ASR	NAME	LAND USE	ASSESSMENT HEIGHT (MAG)
A61	Hin Yau House, Hin Keng Estate	Residential	1.5, 5, 10, 20, 30, 40, 50, 60, 70, 80, 90, 100
A62	Hin Keng Shopping Centre	Recreational	1.5, 5, 10, 20
A63	64 Hin Tin	Village	1.5, 5, 10
A64	Hin Fu House, Hin Keng Estate	Residential	1.5, 5, 10, 20, 30, 40, 50, 60, 70, 80, 90, 100
A65	138 Hin Tin	Village	1.5, 5, 10
A66	Ka Wing House, Ka Tin Court	Residential	1.5, 5, 10, 20, 30, 40, 50, 60, 70, 80, 90, 100
A67	Heien Liang Memorial Secondary School (Sha Tin)	Educational	1.5, 5, 10, 20, 30
A68	Union Hospital	Hospital	1.5, 5, 10, 20, 30, 40, 50, 60, 70, 80
A69	House 1, Hill Paramount	Residential	10, 20
A70	Parc Royale Tower 1	Residential	1.5, 5, 10, 20, 30, 40, 50, 60, 70, 80
A71	Block 2, Julimount Garden	Residential	1.5, 5, 10, 20, 30, 40, 50, 60, 70
A72	Block 4, Julimount Garden	Residential	1.5, 5, 10, 20, 30, 40, 50, 60, 70, 80
A73	Wai Sum House, Lung Hang Estate	Residential	1.5, 5, 10, 20, 30, 40, 50, 60
A74	Cypress Court, Worldwide Gardens	Residential	1.5, 5, 10, 20, 30, 40, 50, 60, 70, 80
A75	Laurel Court, Worldwide Gardens	Residential	10, 20, 30, 40, 50, 60, 70
A76	Hung Mui Kuk Barbecue Area	Recreational	1.5
A77	King Sam House, King Tin Court	Residential	1.5, 5, 10, 20, 30, 40, 50, 60, 70, 80, 90
A78	Golden Fortune Court, Golden Lion Garden	Residential	10, 20, 30, 40, 50, 60, 70, 80, 90
A79	Village House of Hung Mui Kuk	Village	1.5, 5, 10
A80	Kak Tin Village	Village	1.5, 5, 10
A81	Koon Yam Kok, Kak Tin Village	Village	1.5, 5, 10
A82	Sha Tin Government Primary School	Educational	1.5, 5, 10, 20, 30
A83	Yu Wai House, Sun Tin Wai Estate	Residential	1.5, 5, 10, 20, 30, 40, 50, 60
A84	Foo Wai House, Sun Tin Wai Estate	Residential	1.5, 5, 10, 20, 30, 40, 50, 60, 70
A85	Wing Wai House, Sun Tin Wai	Residential	1.5, 5, 10, 20, 30, 40, 50, 60
A86	Yan Wai House, Sun Tin Wai	Residential	1.5, 5, 10, 20, 30, 40, 50, 60, 70
A87	Sharin Methodist College	Educational	1.5, 5, 10, 20, 30
A88	Fung Wai House, Sun Tin Wai	Residential	1.5, 5, 10, 20, 30, 40, 50, 60
A89	Shing Wai House, Sun Tin Wai	Residential	1.5, 5, 10, 20, 30, 40, 50, 60, 70
A90	Sha Tin Tau New Village	Village	1.5, 5, 10
A91	Wing Shing House, Fung Shing Court	Residential	1.5, 5, 10, 20, 30, 40, 50, 60, 70, 80, 90, 100
A92	Che Kung Temple Sports Centre	Recreational	1.5, 5, 10, 20
A93	Shek Jing House, Chun Shek Estate	Residential	1.5, 5, 10, 20, 30, 40, 50, 60, 70, 80
A94	Kwok Tak Seng Catholic Secondary School	Educational	1.5, 5, 10, 20
A95	Chun Shek Shopping Centre	Residential	1.5, 5, 10, 20
A96	104A Sha Tin Tau	Village	1.5, 5, 10
A97	Sha Tin Tau Village	Village	1.5, 5, 10
A98	Tsang Tai Uk	Village	1.5, 5, 10
A99	L Louey	Residential	1.5, 5, 10
A100	Hin Keng Estate - Hin Wan House	Residential	1.5, 5, 10, 20, 30, 40, 50, 60, 70, 80, 90, 100, 110, 120
A101	Hin Keng Estate - Hin Kwai House	Residential	1.5, 5, 10, 20, 30, 40, 50, 60, 70, 80, 90, 100, 110, 120

**LEGEND:**

- PROJECT BOUNDARY
- 500m ASSESSMENT AREA
- 200 CONTOUR
- A01 AIR SENSITIVE RECEIVERS
- A01 AIR SENSITIVE RECEIVERS (NO SENSITIVE USE AT THIS LEVEL)



**AECOM**

PROJECT  
 IMPROVEMENT OF LION ROCK TUNNEL - INVESTIGATION

CLIENT  
 路政署  
 HIGHWAYS DEPARTMENT

CONSULTANT  
 AECOM Asia Company Ltd.  
 www.aecom.com

SUB-CONSULTANTS  
 分判工程顧問公司

**ISSUE/REVISION**

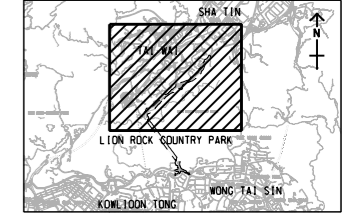
IR	DATE	DESCRIPTION	CHK.

**STATUS**  
 01/21

**SCALE**      **DIMENSION UNIT**

A3 1: 10000      METRES

**KEY PLAN**    A3 1: 200000



**PROJECT NO.**      **AGREEMENT NO.**

60604728      CE 48/2018(HY)

**SHEET TITLE**

19th HIGHEST CUMULATIVE DAILY FSP CONCENTRATION (µg/m³) AT 1.5 mAG, SHATIN (YEAR 2034)

**SHEET NUMBER**

60604728/R42b/FIGURE 3.40

This drawing has been prepared for the use of AECOM's client. It may not be used, modified, reproduced or relied upon by third parties, except as agreed by AECOM or as required by law. AECOM accepts no responsibility, and disclaims any liability whatsoever, for any part, that is used or relied on in this drawing without AECOM's express written consent. All measurements must be obtained from the stated dimensions.





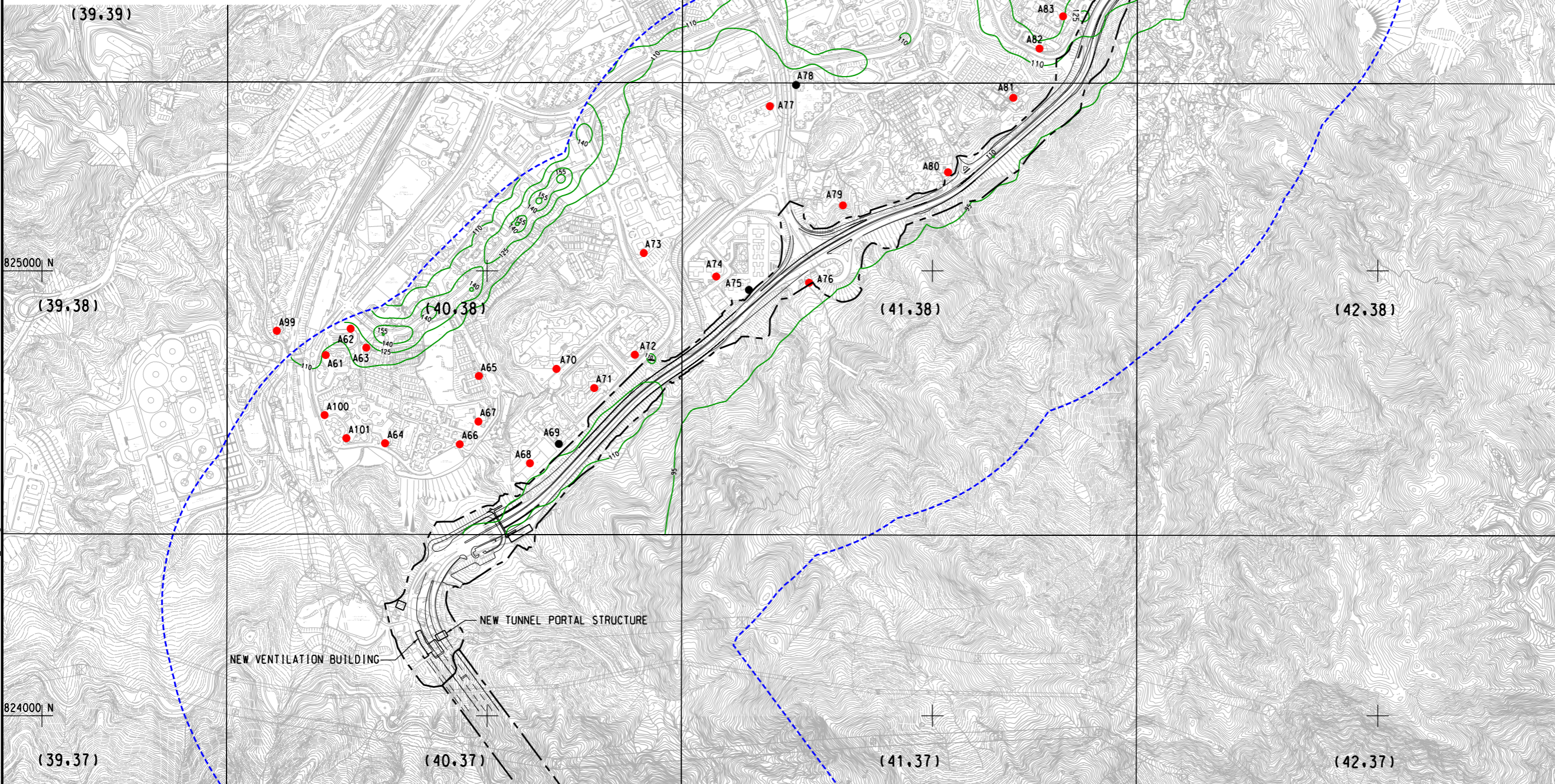


ISO A1 594mm x 841mm  
 Approved:  
 Checked:  
 Designer:  
 Project Management Initials:  
 7/20/2022  
 PATH PROJECTS/0604728/DRAWING/REPORT/42b/42b\_342.dgn  
 Plot File by: HEM

ASR	NAME	LAND USE	ASSESSMENT HEIGHT (MAG)
A61	Hin Yau House, Hin Keng Estate	Residential	1.5, 5, 10, 20, 30, 40, 50, 60, 70, 80, 90, 100
A62	Hin Keng Shopping Centre	Recreational	1.5, 5, 10, 20
A63	64 Hin Tin	Village	1.5, 5, 10
A64	Hin Fu House, Hin Keng Estate	Residential	1.5, 5, 10, 20, 30, 40, 50, 60, 70, 80, 90, 100
A65	138 Hin Tin	Village	1.5, 5, 10
A66	Ka Wing House, Ka Tin Court	Residential	1.5, 5, 10, 20, 30, 40, 50, 60, 70, 80, 90, 100
A67	Heien Liang Memorial Secondary School (Sha Tin)	Educational	1.5, 5, 10, 20, 30
A68	Union Hospital	Hospital	1.5, 5, 10, 20, 30, 40, 50, 60, 70, 80
A69	House 1, Hill Paramount	Residential	10, 20
A70	Parc Royale Tower 1	Residential	1.5, 5, 10, 20, 30, 40, 50, 60, 70, 80
A71	Block 2, Julimount Garden	Residential	1.5, 5, 10, 20, 30, 40, 50, 60, 70
A72	Block 4, Julimount Garden	Residential	1.5, 5, 10, 20, 30, 40, 50, 60, 70, 80
A73	Wai Sum House, Lung Hang Estate	Residential	1.5, 5, 10, 20, 30, 40, 50, 60
A74	Cypress Court, Worldwide Gardens	Residential	1.5, 5, 10, 20, 30, 40, 50, 60, 70, 80
A75	Laurel Court, Worldwide Gardens	Residential	10, 20, 30, 40, 50, 60, 70
A76	Hung Mui Kuk Barbecue Area	Recreational	1.5
A77	King Sam House, King Tin Court	Residential	1.5, 5, 10, 20, 30, 40, 50, 60, 70, 80, 90
A78	Golden Fortune Court, Golden Lion Garden	Residential	10, 20, 30, 40, 50, 60, 70, 80, 90
A79	Village House at Hung Mui Kuk	Village	1.5, 5, 10
A80	Kak Tin Village	Village	1.5, 5, 10
A81	Koon Yam Kok, Kak Tin Village	Village	1.5, 5, 10
A82	Sha Tin Government Primary School	Educational	1.5, 5, 10, 20, 30
A83	Yu Wai House, Sun Tin Wai Estate	Residential	1.5, 5, 10, 20, 30, 40, 50, 60
A84	Foo Wai House, Sun Tin Wai Estate	Residential	1.5, 5, 10, 20, 30, 40, 50, 60, 70
A85	Wing Wai House, Sun Tin Wai	Residential	1.5, 5, 10, 20, 30, 40, 50, 60
A86	Yan Wai House, Sun Tin Wai	Residential	1.5, 5, 10, 20, 30, 40, 50, 60, 70
A87	Shatin Methodist College	Educational	1.5, 5, 10, 20, 30
A88	Fung Wai House, Sun Tin Wai	Residential	1.5, 5, 10, 20, 30, 40, 50, 60
A89	Shing Wai House, Sun Tin Wai	Residential	1.5, 5, 10, 20, 30, 40, 50, 60, 70
A90	Sha Tin Tau New Village	Village	1.5, 5, 10
A91	Wing Shing House, Fung Shing Court	Residential	1.5, 5, 10, 20, 30, 40, 50, 60, 70, 80, 90, 100
A92	Che Kung Temple Sports Centre	Recreational	1.5, 5, 10, 20
A93	Shek Jing House, Chun Shek Estate	Residential	1.5, 5, 10, 20, 30, 40, 50, 60, 70, 80
A94	Kwok Tak Seng Catholic Secondary School	Educational	1.5, 5, 10, 20
A95	Chun Shek Shopping Centre	Residential	1.5, 5, 10, 20
A96	104A Sha Tin Tau	Village	1.5, 5, 10
A97	Sha Tin Tau Village	Village	1.5, 5, 10
A98	Tsang Tai Uk	Village	1.5, 5, 10
A99	L Lauy	Residential	1.5, 5, 10
A100	Hin Keng Estate - Hin Wan House	Residential	1.5, 5, 10, 20, 30, 40, 50, 60, 70, 80, 90, 100, 110, 120
A101	Hin Keng Estate - Hin Kwai House	Residential	1.5, 5, 10, 20, 30, 40, 50, 60, 70, 80, 90, 100, 110, 120

**LEGEND:**

- PROJECT BOUNDARY
- 500m ASSESSMENT AREA
- 120 CONTOUR
- A01 AIR SENSITIVE RECEIVERS
- A01 AIR SENSITIVE RECEIVERS (NO SENSITIVE USE AT THIS LEVEL)



**AECOM**

PROJECT  
 IMPROVEMENT OF LION ROCK TUNNEL - INVESTIGATION

CLIENT  
 路政署  
**HIGHWAYS DEPARTMENT**

CONSULTANT  
 AECOM Asia Company Ltd.  
 www.aecom.com

SUB-CONSULTANTS  
 分列工程顧問公司

**ISSUE/REVISION**

IR	DATE	DESCRIPTION	CHK.

**STATUS**

**SCALE**      **DIMENSION UNIT**

A3 1: 10000      METRES

**KEY PLAN**    A3 1: 200000

**PROJECT NO.**      **AGREEMENT NO.**

60604728      CE 48/2018(HY)

**SHEET TITLE**

19th HIGHEST CUMULATIVE HOURLY NO<sub>2</sub> CONCENTRATION (µg/m<sup>3</sup>) AT 1.5 mAG, SHATIN (YEAR 2034)

**SHEET NUMBER**

60604728/R42b/FIGURE 3.42

This drawing has been prepared for the use of AECOM's client. It may not be used, modified, reproduced or relied upon by third parties, except as agreed by AECOM or as required by law. AECOM accepts no responsibility, and disclaims any liability whatsoever, for any part, that is used or relied on in this drawing without AECOM's express written consent. All measurements must be obtained from the stated dimensions.

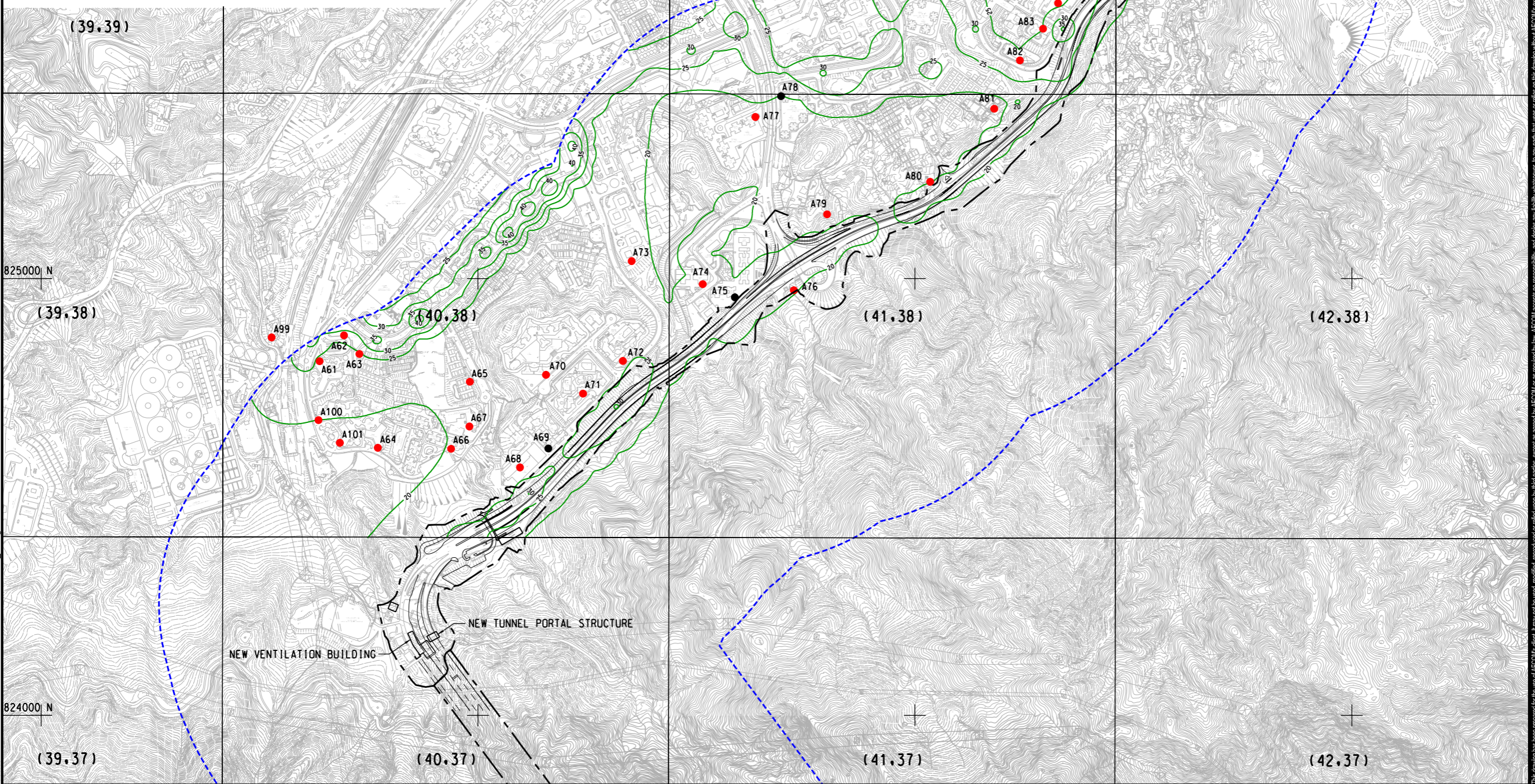


ISO A1 594mm x 841mm  
 Approved:  
 Checked:  
 Designer:  
 Project Management Initials:  
 7/20/2022  
 PATH PROJECTS/0604728/DRAWING/REPORT/42b/42b\_343.dgn  
 Plot File by: HEM

ASR	NAME	LAND USE	ASSESSMENT HEIGHT (MAG)
A61	Hin Yau House, Hin Keng Estate	Residential	1.5, 5, 10, 20, 30, 40, 50, 60, 70, 80, 90, 100
A62	Hin Keng Shopping Centre	Recreational	1.5, 5, 10, 20
A63	64 Hin Tin	Village	1.5, 5, 10
A64	Hin Fu House, Hin Keng Estate	Residential	1.5, 5, 10, 20, 30, 40, 50, 60, 70, 80, 90, 100
A65	138 Hin Tin	Village	1.5, 5, 10
A66	Ka Wing House, Ka Tin Court	Residential	1.5, 5, 10, 20, 30, 40, 50, 60, 70, 80, 90, 100
A67	Heien Liang Memorial Secondary School (Sha Tin)	Educational	1.5, 5, 10, 20, 30
A68	Union Hospital	Hospital	1.5, 5, 10, 20, 30, 40, 50, 60, 70, 80
A69	House 1, H111 Paramount	Residential	10, 20
A70	Parc Royale Tower 1	Residential	1.5, 5, 10, 20, 30, 40, 50, 60, 70, 80
A71	Block 2, Julimount Garden	Residential	1.5, 5, 10, 20, 30, 40, 50, 60, 70
A72	Block 4, Julimount Garden	Residential	1.5, 5, 10, 20, 30, 40, 50, 60, 70, 80
A73	Wai Sum House, Lung Hang Estate	Residential	1.5, 5, 10, 20, 30, 40, 50, 60
A74	Cypress Court, Worldwide Gardens	Residential	1.5, 5, 10, 20, 30, 40, 50, 60, 70, 80
A75	Laurel Court, Worldwide Gardens	Residential	10, 20, 30, 40, 50, 60, 70
A76	Hung Mui Kuk Barbecue Area	Recreational	1.5
A77	King Sam House, King Tin Court	Residential	1.5, 5, 10, 20, 30, 40, 50, 60, 70, 80, 90
A78	Golden Fortune Court, Golden Lion Garden	Residential	10, 20, 30, 40, 50, 60, 70, 80, 90
A79	Village House at Hung Mui Kuk	Village	1.5, 5, 10
A80	Kok Tin Village	Village	1.5, 5, 10
A81	Koon Yam Kok, Kok Tin Village	Village	1.5, 5, 10
A82	Sha Tin Government Primary School	Educational	1.5, 5, 10, 20, 30
A83	Yu Wai House, Sun Tin Wai Estate	Residential	1.5, 5, 10, 20, 30, 40, 50, 60
A84	Foo Wai House, Sun Tin Wai Estate	Residential	1.5, 5, 10, 20, 30, 40, 50, 60, 70
A85	Wing Wai House, Sun Tin Wai	Residential	1.5, 5, 10, 20, 30, 40, 50, 60
A86	Yan Wai House, Sun Tin Wai	Residential	1.5, 5, 10, 20, 30, 40, 50, 60, 70
A87	Sha Tin Methodist College	Educational	1.5, 5, 10, 20, 30
A88	Fung Wai House, Sun Tin Wai	Residential	1.5, 5, 10, 20, 30, 40, 50, 60
A89	Shing Wai House, Sun Tin Wai	Residential	1.5, 5, 10, 20, 30, 40, 50, 60, 70
A90	Sha Tin Tau New Village	Village	1.5, 5, 10
A91	Wing Shing House, Fung Shing Court	Residential	1.5, 5, 10, 20, 30, 40, 50, 60, 70, 80, 90, 100
A92	Che Kung Temple Sports Centre	Recreational	1.5, 5, 10, 20
A93	Shek Jing House, Chun Shek Estate	Residential	1.5, 5, 10, 20, 30, 40, 50, 60, 70, 80
A94	Kwok Tak Seng Catholic Secondary School	Educational	1.5, 5, 10, 20
A95	Chun Shek Shopping Centre	Residential	1.5, 5, 10, 20
A96	104A Sha Tin Tau	Village	1.5, 5, 10
A97	Sha Tin Tau Village	Village	1.5, 5, 10
A98	Tsang Tai Uk	Village	1.5, 5, 10
A99	L Lauy	Residential	1.5, 5, 10
A100	Hin Keng Estate - Hin Wan House	Residential	1.5, 5, 10, 20, 30, 40, 50, 60, 70, 80, 90, 100, 110, 120
A101	Hin Keng Estate - Hin Kwai House	Residential	1.5, 5, 10, 20, 30, 40, 50, 60, 70, 80, 90, 100, 110, 120

**LEGEND:**

- PROJECT BOUNDARY
- 500m ASSESSMENT AREA
- 200 CONTOUR
- A01 AIR SENSITIVE RECEIVERS
- A01 AIR SENSITIVE RECEIVERS (NO SENSITIVE USE AT THIS LEVEL)



**AECOM**

PROJECT  
 IMPROVEMENT OF LION ROCK TUNNEL - INVESTIGATION

CLIENT  
 路政署  
 HIGHWAYS DEPARTMENT

CONSULTANT  
 AECOM Asia Company Ltd.  
 www.aecom.com

SUB-CONSULTANTS  
 分判工程顧問公司

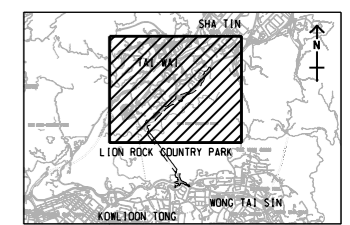
**ISSUE/REVISION**

NO.	DATE	DESCRIPTION	CHK.

**STATUS**  
 01/21

**SCALE** 1:10000      **DIMENSION UNIT** METRES

**KEY PLAN** A3 1:200000



**PROJECT NO.** 60604728      **AGREEMENT NO.** CE 48/2018(HY)

**SHEET TITLE**  
 CUMULATIVE ANNUAL NO<sub>2</sub> CONCENTRATION (µg/m<sup>3</sup>) at 1.5 mAG, SHATIN (YEAR 2034)

**SHEET NUMBER**  
 60604728/R42b/FIGURE 3.43

This drawing has been prepared for the use of AECOM's client. It may not be used, modified, reproduced or relied upon by third parties, except as agreed by AECOM or as required by law. AECOM accepts no responsibility, and disclaims any liability whatsoever, for any part, that is used or relied on in this drawing without AECOM's express written consent. All measurements must be obtained from the stated dimensions.