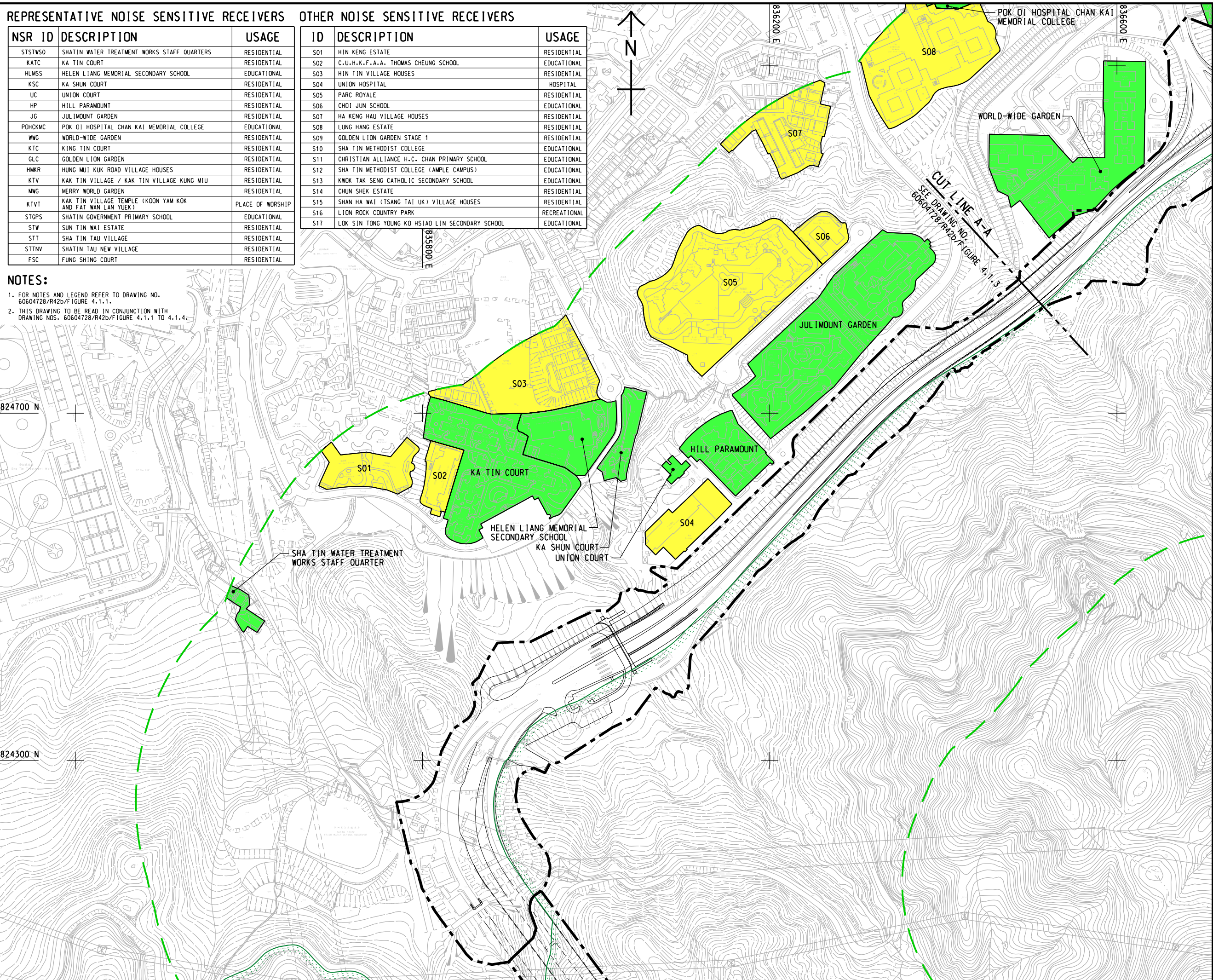


REPRESENTATIVE NOISE SENSITIVE RECEIVERS			OTHER NOISE SENSITIVE RECEIVERS		
NSR ID	DESCRIPTION	USAGE	ID	DESCRIPTION	USAGE
SSTWSO	SHATIN WATER TREATMENT WORKS STAFF QUARTERS	RESIDENTIAL	S01	HIN KENG ESTATE	RESIDENTIAL
KATC	KA TIN COURT	RESIDENTIAL	S02	C.U.H.K.F.A.A. THOMAS CHEUNG SCHOOL	EDUCATIONAL
HLMS5	HELEN LIANG MEMORIAL SECONDARY SCHOOL	EDUCATIONAL	S03	HIN TIN VILLAGE HOUSES	RESIDENTIAL
KSC	KA SHUN COURT	RESIDENTIAL	S04	UNION HOSPITAL	HOSPITAL
UC	UNION COURT	RESIDENTIAL	S05	PARC ROYALE	RESIDENTIAL
HP	HILL PARAMOUNT	RESIDENTIAL	S06	CHOI JUN SCHOOL	EDUCATIONAL
JG	JULIMOUNT GARDEN	RESIDENTIAL	S07	HA KENG HAU VILLAGE HOUSES	RESIDENTIAL
POHCKMC	POK OI HOSPITAL CHAN KAI MEMORIAL COLLEGE	EDUCATIONAL	S08	LUNG HANG ESTATE	RESIDENTIAL
WWG	WORLD-WIDE GARDEN	RESIDENTIAL	S09	GOLDEN LION GARDEN STAGE 1	RESIDENTIAL
KTC	KING TIN COURT	RESIDENTIAL	S10	SHA TIN METHODIST COLLEGE	EDUCATIONAL
GLC	GOLDEN LION GARDEN	RESIDENTIAL	S11	CHRISTIAN ALLIANCE H.C. CHAN PRIMARY SCHOOL	EDUCATIONAL
HMKR	HUNG MUJ KUK ROAD VILLAGE HOUSES	RESIDENTIAL	S12	SHA TIN METHODIST COLLEGE (AMPLE CAMPUS)	EDUCATIONAL
KTV	KAK TIN VILLAGE / KAK TIN VILLAGE KUNG MIU	RESIDENTIAL	S13	KWOK TAK SENG CATHOLIC SECONDARY SCHOOL	EDUCATIONAL
MMG	MERRY WORLD GARDEN	RESIDENTIAL	S14	CHUN SHEK ESTATE	RESIDENTIAL
KTVT	KAK TIN VILLAGE TEMPLE (KOON YAM KOK AND FAT WAN LAN YUEK)	PLACE OF WORSHIP	S15	SHAN HA WAI (TSANG TAI UK) VILLAGE HOUSES	RESIDENTIAL
STGPS	SHATIN GOVERNMENT PRIMARY SCHOOL	EDUCATIONAL	S16	LION ROCK COUNTRY PARK	RECREATIONAL
STW	SUN TIN WAI ESTATE	RESIDENTIAL	S17	LOK SIN TONG YOUNG KO HSIAO LIN SECONDARY SCHOOL	EDUCATIONAL
STT	SHA TIN TAU VILLAGE	RESIDENTIAL			
STTNV	SHATIN TAU NEW VILLAGE	RESIDENTIAL			
FSC	FUNG SHING COURT	RESIDENTIAL			

**NOTES:**

1. FOR NOTES AND LEGEND REFER TO DRAWING NO. 60604728/R42b/FIGURE 4.1.1.
2. THIS DRAWING TO BE READ IN CONJUNCTION WITH DRAWING NOS. 60604728/R42b/FIGURE 4.1.1 TO 4.1.4.



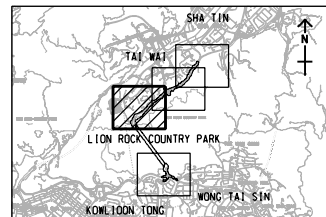
The AECOM logo is displayed at the top left. Below it, the project title "PROJECT" is followed by its Chinese translation "项目". The main title "IMPROVEMENT OF LION ROCK TUNNEL INVESTIGATION" is centered in large, bold, black capital letters. Below this, the client information "CLIENT" is followed by "英主". To the right of the client name is the logo of the Highways Department, which consists of two stylized vertical bars forming a gate-like shape. Next to this logo is the text "路政署" and "HIGHWAYS DEPARTMENT" in bold capital letters. Below the client section, the consultant information "CONSULTANT" is followed by "工程顾问公司". At the bottom, the company name "AECOM Asia Company Ltd." is listed, along with its website "www.aecom.com". Finally, the subtitle "SUB-CONSULTANTS" is shown at the very bottom, followed by "分判工程顾问公司".

[illegible]

## STATUS

<b>SCALE</b> 比例	<b>DIMENSION UNIT</b> 尺寸單位
A3 1 : 4000	METRES

**KEY PLAN** A3 1 : 200000



<b>PROJECT NO.</b> 項目編號	<b>AGREEMENT NO</b> 協議編號
60604728	CE 48/2018(HY)

**SHEET TITLE**  
圖紙名稱

LOCATIONS OF NOISE ASSESSMENT  
AREA AND REPRESENTATIVE  
NOISE SENSITIVE RECEIVERS  
(SHATIN) SHEET 2 OF 4

**SHEET NUMBER**  
7021 (REV. 6/15/2011)

60604728/R42b/FIGURE 4.1.2