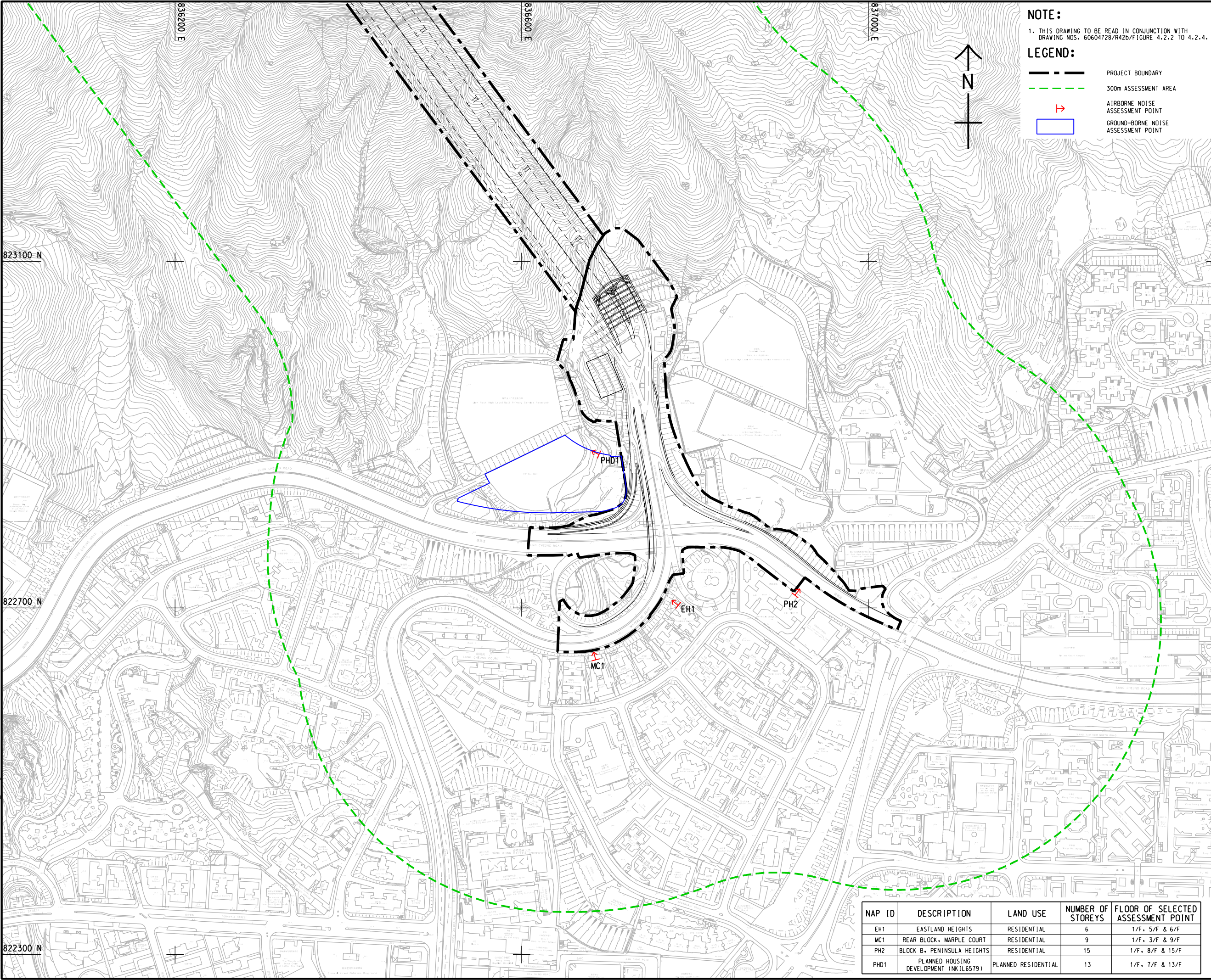


ISO A1 594mm x 841mm
Approved:
Checked:
Designer:
Project Management Initials:
2022/6/7
PLOT FILE BY: ZHILZ
PLOT FILE: PROJECT\60604728\DRAWING\REPORT\N42b\N42b_78c.dgn



NOTE:
1. THIS DRAWING TO BE READ IN CONJUNCTION WITH
DRAWING NOS. 60604728/R42b/Figure 4.2.2 TO 4.2.4.

LEGEND:

- PROJECT BOUNDARY
- 300m ASSESSMENT AREA
- AIRBORNE NOISE ASSESSMENT POINT
- GROUND-BORNE NOISE ASSESSMENT POINT

AECOM
PROJECT
IMPROVEMENT OF
LION ROCK TUNNEL -
INVESTIGATION

CLIENT
路政署
**HIGHWAYS
DEPARTMENT**

CONSULTANT
AECOM Asia Company Ltd.
www.aecom.com

SUB-CONSULTANTS

ISSUE/REVISION

PROJECT NO.
60604728

AGREEMENT NO.
CE 48/2018(HY)

SHEET TITLE
LOCATION OF NOISE
ASSESSMENT POINT FOR
CONSTRUCTION PHASE
(KOWLOON)

SHEET NUMBER
60604728/R42b/FIGURE 4.2.1

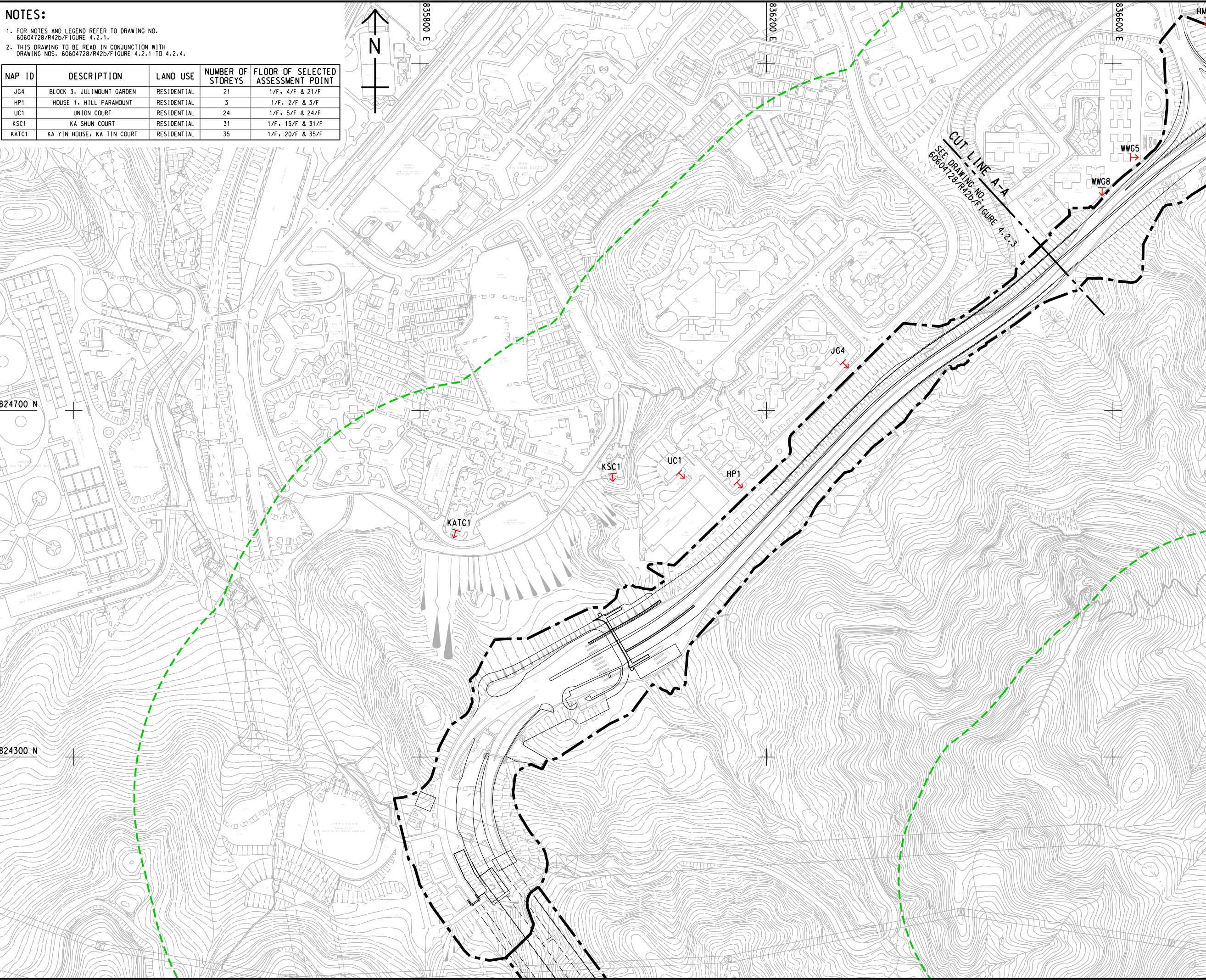
SHEET 1 OF 4

NAP ID	DESCRIPTION	LAND USE	NUMBER OF STOREYS	FLOOR OF SELECTED ASSESSMENT POINT
EH1	EASTLAND HEIGHTS	RESIDENTIAL	6	1/F, 5/F & 6/F
MC1	REAR BLOCK, MARPLE COURT	RESIDENTIAL	9	1/F, 3/F & 9/F
PH2	BLOCK B, PENINSULA HEIGHTS	RESIDENTIAL	15	1/F, 8/F & 15/F
PHD1	PLANNED HOUSING DEVELOPMENT (NK1L6579)	PLANNED RESIDENTIAL	13	1/F, 7/F & 13/F

ISO A1 594mm x 841mm
Approved:
Checked:
Designer:
Project Management Initials:
2022/6/7
P:\PROJECTS\60604728\DRAWING\REPORT\W42b\W42b_737.dgn
Plot File by: ZHLZ

NOTES:
1. FOR NOTES AND LEGEND REFER TO DRAWING NO. 60604728/R42b/FIGURE 4.2.1.
2. THIS DRAWING TO BE READ IN CONJUNCTION WITH DRAWING NOS. 60604728/R42b/FIGURE 4.2.1 TO 4.2.4.

NAP ID	DESCRIPTION	LAND USE	NUMBER OF STOREYS	FLOOR OF SELECTED ASSESSMENT POINT
JG4	BLOCK 3, JULIMOUNT GARDEN	RESIDENTIAL	21	1/F, 4/F & 21/F
HP1	HOUSE 1, HILL PARAMOUNT	RESIDENTIAL	3	1/F, 2/F & 3/F
UC1	UNION COURT	RESIDENTIAL	24	1/F, 5/F & 24/F
KSC1	KA SHUN COURT	RESIDENTIAL	31	1/F, 15/F & 31/F
KATC1	KA YIN HOUSE, KA TIN COURT	RESIDENTIAL	35	1/F, 20/F & 35/F



AECOM

PROJECT

IMPROVEMENT OF LION ROCK TUNNEL - INVESTIGATION

CLIENT

路政署
HIGHWAYS
DEPARTMENT

CONSULTANT

AECOM Asia Company Ltd.
www.aecom.com

SUB-CONSULTANTS

分判工程顧問公司

ISSUE/REVISION

I/R	DATE	DESCRIPTION	CHK.

STATUS

SCALE

A3 1 : 4000

DIMENSION UNIT

METRES

KEY PLAN

PROJECT NO.

60604728

AGREEMENT NO.

CE 48/2018(HY)

SHEET TITLE

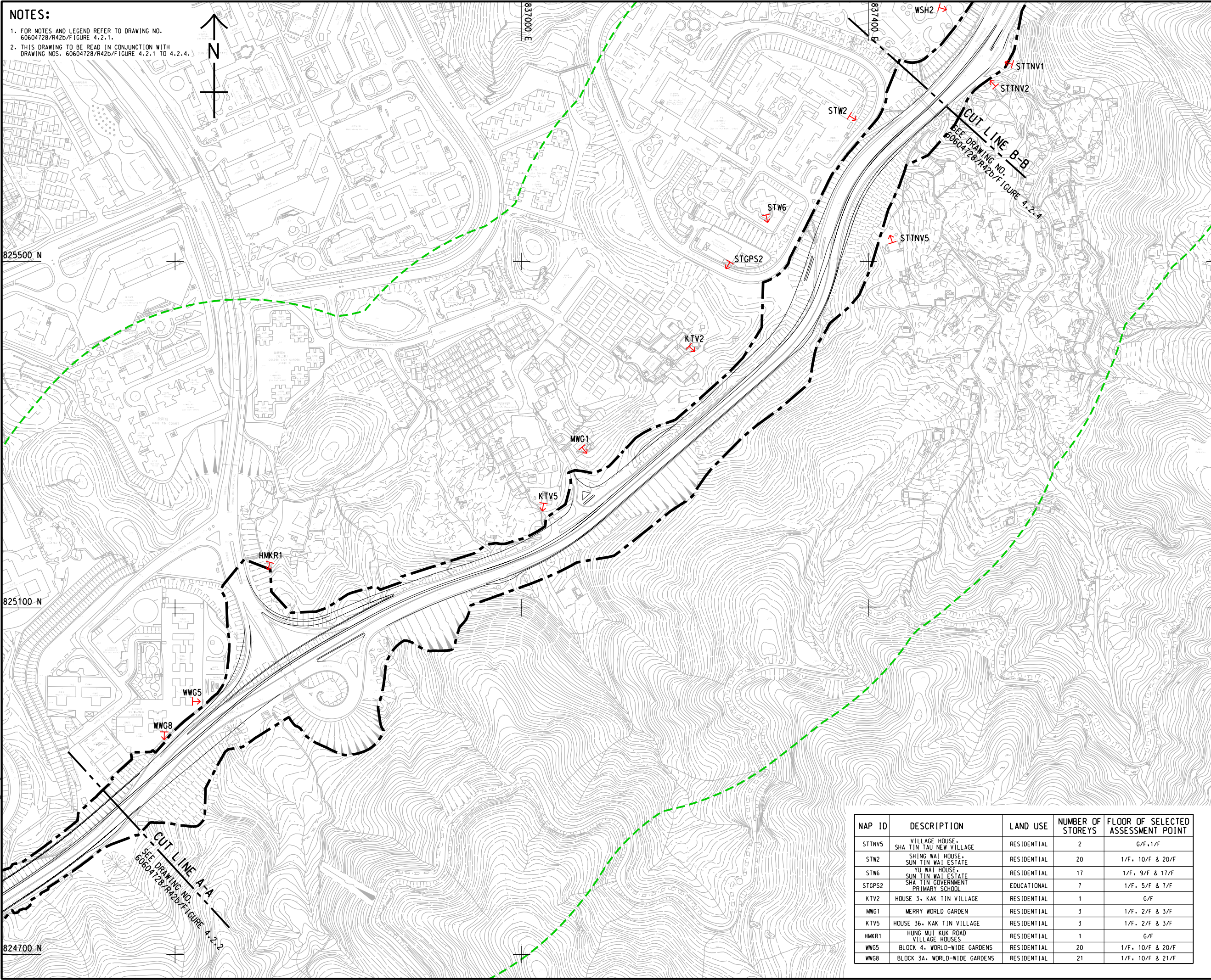
LOCATION OF NOISE
ASSESSMENT POINT FOR
CONSTRUCTION PHASE
(SHATIN)

SHEET 2 OF 4

SHEET NUMBER

60604728/R42b/FIGURE 4.2.2

ISO A1 594mm x 841mm
Approved:
Checked:
Designer:
Project Management Initials:
2022/7/11
PLOT FILE BY: ZHILZ
PATH: P:\PROJECTS\60604728\DRAWING\REPORT\N42b-78b.dgn



NOTES:
1. FOR NOTES AND LEGEND REFER TO DRAWING NO. 60604728/R42b/FIGURE 4.2.1.
2. THIS DRAWING TO BE READ IN CONJUNCTION WITH DRAWING NOS. 60604728/R42b/FIGURE 4.2.1 TO 4.2.4.

NAP ID	DESCRIPTION	LAND USE	NUMBER OF STOREYS	FLOOR OF SELECTED ASSESSMENT POINT
STTNV5	VILLAGE HOUSE, SHA TIN TAU NEW VILLAGE	RESIDENTIAL	2	G/F, 1/F
STW2	SHING WAI HOUSE, SUN TIN WAI ESTATE	RESIDENTIAL	20	1/F, 10/F & 20/F
STW6	YU WAI HOUSE, SUN TIN WAI ESTATE	RESIDENTIAL	17	1/F, 9/F & 17/F
STGPS2	SHA TIN WAI ESTATE PRIMARY SCHOOL	EDUCATIONAL	7	1/F, 5/F & 7/F
KTV2	HOUSE 3, KAK TIN VILLAGE	RESIDENTIAL	1	G/F
MWC1	MERRY WORLD GARDEN	RESIDENTIAL	3	1/F, 2/F & 3/F
KTV5	HOUSE 36, KAK TIN VILLAGE	RESIDENTIAL	3	1/F, 2/F & 3/F
HMKR1	HUNG MUI KUK ROAD VILLAGE HOUSES	RESIDENTIAL	1	G/F
WWG5	BLOCK 4, WORLD-WIDE GARDENS	RESIDENTIAL	20	1/F, 10/F & 20/F
WWG8	BLOCK 3A, WORLD-WIDE GARDENS	RESIDENTIAL	21	1/F, 10/F & 21/F

AECOM

PROJECT
項目

IMPROVEMENT OF LION ROCK TUNNEL - INVESTIGATION

CLIENT
業主
**路政署
HIGHWAYS DEPARTMENT**

CONSULTANT
顧問公司
AECOM Asia Company Ltd.
www.aecom.com

SUB-CONSULTANTS
分判工程顧問公司

ISSUE/REVISION
修訂

I/R
修訂

DATE
日期

DESCRIPTION
修改描述

CHK.
校核

STATUS
狀態

SCALE
比例

A3 1:4000

DIMENSION UNIT
尺寸單位

METRES

KEY PLAN
索引圖

PROJECT NO.
項目編號

60604728

AGREEMENT NO.
協議編號

CE 48/2018(HY)

SHEET TITLE
圖紙名稱

LOCATION OF NOISE ASSESSMENT POINT FOR CONSTRUCTION PHASE (SHATIN)
施工階段噪音評估點位置 (沙田)

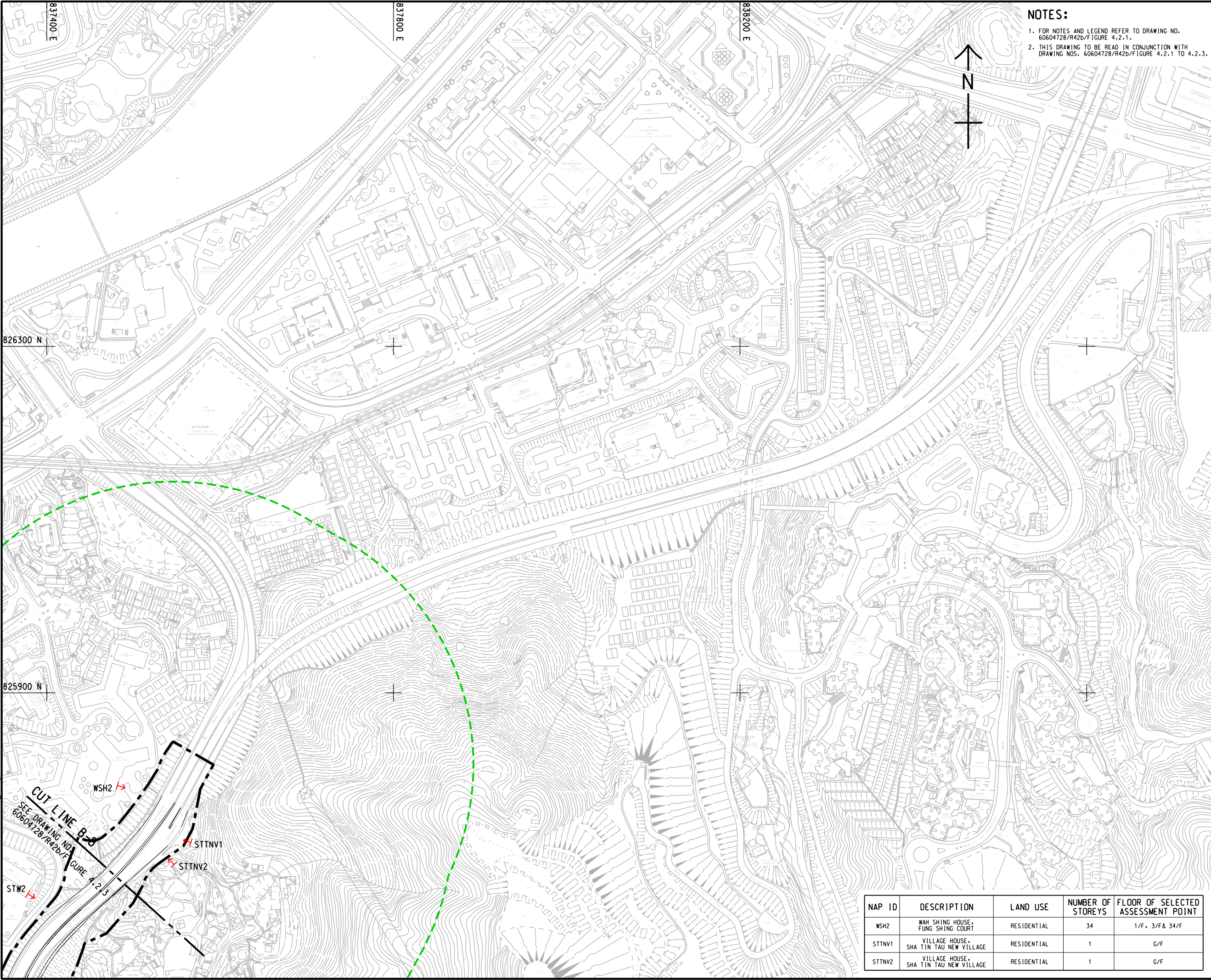
SHEET NUMBER
圖紙編號

60604728/R42b/FIGURE 4.2.3

SHEET 3 OF 4

This drawing has been prepared for the use of AECOM's client. It may not be used, modified, reproduced or relied upon by third parties, except as agreed by AECOM or as required by law. AECOM accepts no responsibility, and denies any liability whatsoever, to any party that uses or relies on this drawing without AECOM's express written consent. All measurements must be obtained from the stated dimensions.

ISO A1 594mm x 841mm
Approved:
Checked:
Designer:
Project Management Initials:



NOTES:

1. FOR NOTES AND LEGEND REFER TO DRAWING NO. 60604728/R42b/Figure 4.2.1.
2. THIS DRAWING TO BE READ IN CONJUNCTION WITH DRAWING NOS. 60604728/R42b/Figure 4.2.1 TO 4.2.3.

AECOM

PROJECT

IMPROVEMENT OF
LION ROCK TUNNEL -
INVESTIGATION

CLIENT

路政署
HIGHWAYS
DEPARTMENT

CONSULTANT

AECOM Asia Company Ltd.
www.aecom.com

SUB-CONSULTANTS

分判工程顧問公司

ISSUE/REVISION

ISSUE/REVISION	DATE	DESCRIPTION	CHK.

I/R	DATE	DESCRIPTION	CHK.

STATUS

STATUS

SCALE

A3 1 : 4000

DIMENSION UNIT

METRES

KEY PLAN

KEY PLAN

PROJECT NO.

60604728

AGREEMENT NO.

CE 48/2018(HY)

SHEET TITLE

LOCATION OF NOISE
ASSESSMENT POINT FOR
CONSTRUCTION PHASE
(SHATIN)

SHEET 4 OF 4

SHEET NUMBER

60604728/R42b/FIGURE 4.2.4

NAP ID	DESCRIPTION	LAND USE	NUMBER OF STOREYS	FLOOR OF SELECTED ASSESSMENT POINT
WSH2	WAH SHING HOUSE, FUNG SHING COURT	RESIDENTIAL	34	1/F, 3/F & 34/F
STTNV1	VILLAGE HOUSE, SHA TIN TAU NEW VILLAGE	RESIDENTIAL	1	G/F
STTNV2	VILLAGE HOUSE, SHA TIN TAU NEW VILLAGE	RESIDENTIAL	1	G/F

Plot File by: ZHILZ
2022/6/23
PATH P:\PROJECTS\60604728\DRAWING\REPORT\N42b\N42b_788.dgn

This drawing has been prepared for the use of AECOM's client. It may not be used, modified, reproduced or relied upon by third parties, except as agreed by AECOM or as required by law. AECOM accepts no responsibility, and denies any liability whatsoever, to any party that uses or relies on this drawing without AECOM's express written consent. All measurements must be obtained from the stated dimensions.