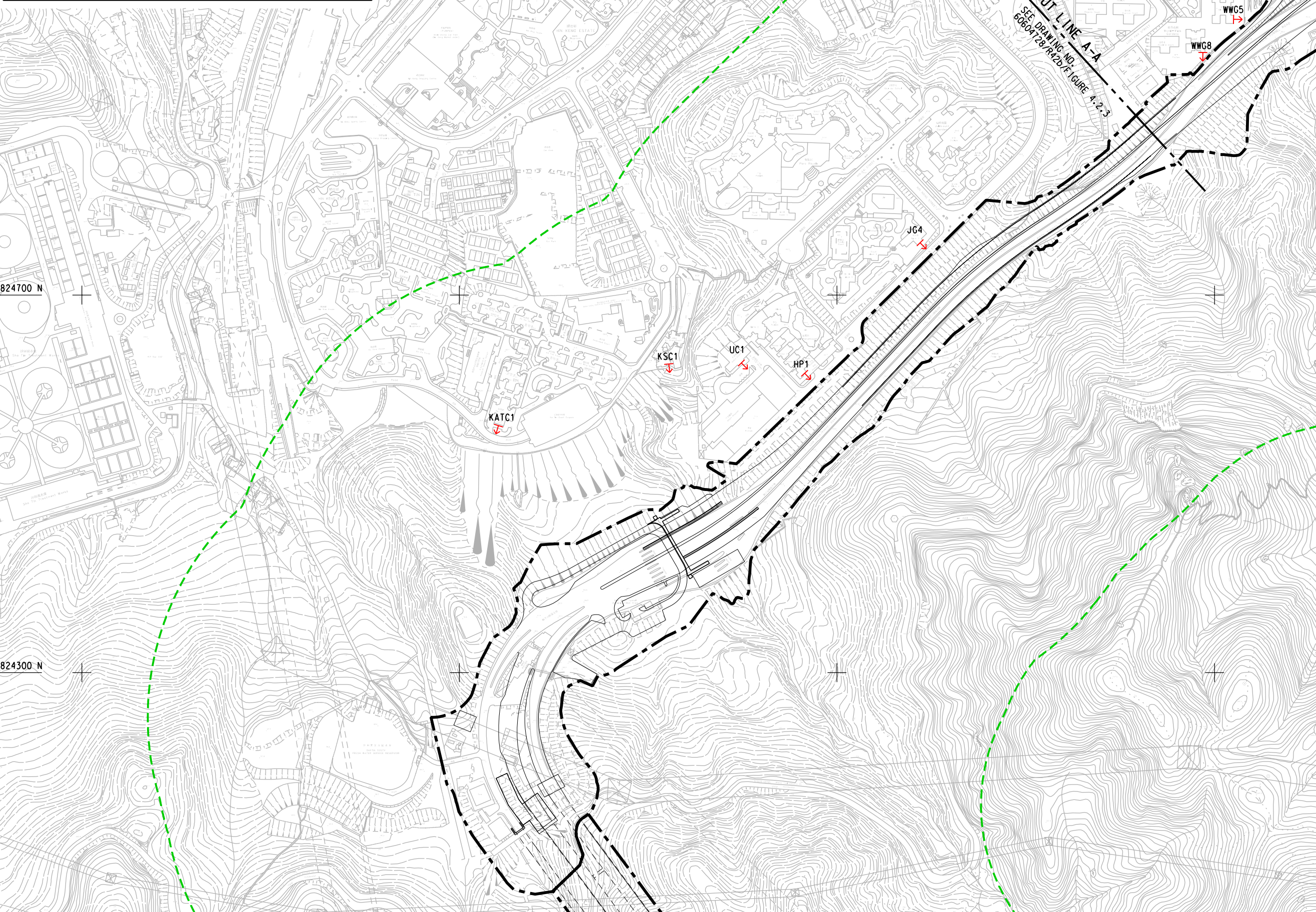


NOTES:

1. FOR NOTES AND LEGEND REFER TO DRAWING NO. 60604728/R42b/FIGURE 4.2.1.
2. THIS DRAWING TO BE READ IN CONJUNCTION WITH DRAWING NOS. 60604728/R42b/FIGURE 4.2.1 TO 4.2.4.

NAP ID	DESCRIPTION	LAND USE	NUMBER OF STOREYS	FLOOR OF SELECTED ASSESSMENT POINT
JG4	BLOCK 3, JULIMOUNT GARDEN	RESIDENTIAL	21	1/F, 4/F & 21/F
HP1	HOUSE 1, HILL PARAMOUNT	RESIDENTIAL	3	1/F, 2/F & 3/F
UC1	UNION COURT	RESIDENTIAL	24	1/F, 5/F & 24/F
KSC1	KA SHUN COURT	RESIDENTIAL	31	1/F, 15/F & 31/F
KATC1	KA YIN HOUSE, KA TIN COURT	RESIDENTIAL	35	1/F, 20/F & 35/F



This drawing has been prepared for the use of AECOM's client. It may not be used, modified, reproduced or relied upon by third parties, except as agreed by AECOM or as required by law. AECOM accepts no responsibility, and denies any liability whatsoever, to any party that uses or relies on this drawing without AECOM's express written consent. Do not scale this document. All measurements must be obtained from the stated dimensions.



PROJECT

IMPROVEMENT OF LION ROCK TUNNEL - INVESTIGATION

CLIENT
業主

CONSULTANT
工程顧問公司

AECOM Asia Company Ltd.
www.aecom.com

SUB-CONSULTANTS
分判工程顧問公司

ISSUE/REVISION

[illegible]

STATUS

SCALE

A3 1 : 4000

DIMENSION UNIT

METRES

KEY PLAN

PROJECT NO.
項目編號

60604728

SHEET TITLE
圖紙名稱

LOCATION OF NOISE
ASSESSMENT POINT FOR
CONSTRUCTION PHASE
(SHATIN)

SHEET 2 OF 4

SHEET NUMBER

60604728/R42b/FIGURE 4.2.2