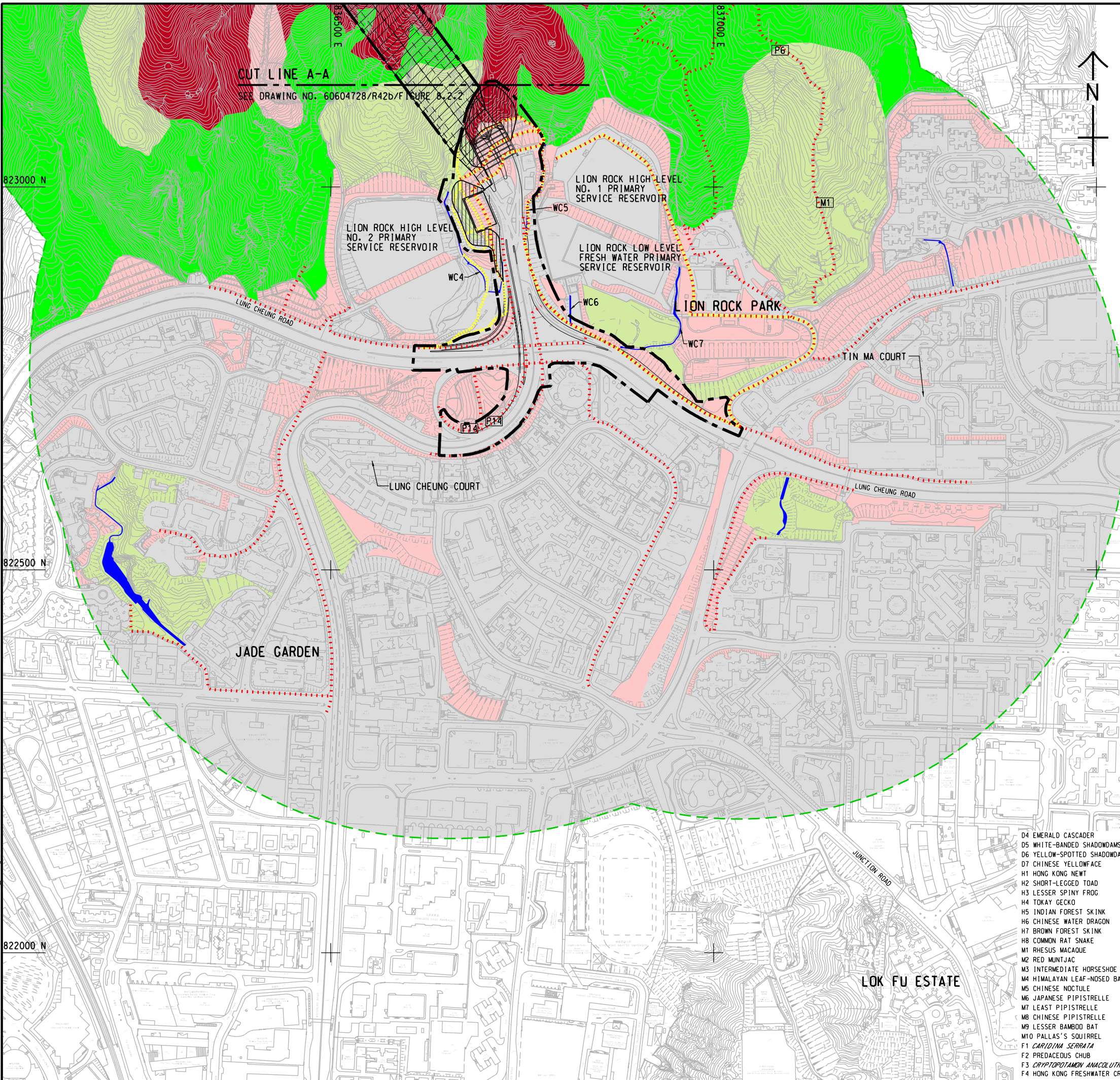


ISO A1 594mm x 841mm
 Approved:
 Checked: 823000 N
 Designer:
 Project Management Initials: 822500 N
 822000 N
 Plot File by: ZHILZ
 PATH: P:\PROJECTS\60604728\DRAWING\REPORT\60604728_R42b_711.dgn
 2022/6/22



NOTES:

1. THIS DRAWING TO BE READ IN CONJUNCTION WITH DRAWING NOS. 60604728/R42b/FIGURE 8.2.2 TO 8.2.5.
2. DISCREPANCY IN RECORDS OF WATERCOURSES BETWEEN DRAWING NO. 60604728/R42b/FIGURE 5.2 AND DRAWING NOS. 60604728/R42b/FIGURE 8.2.1 TO FIGURE 8.2.5 OCCURS DUE TO DIFFERENT ASSESSMENT METHODOLOGIES AND CRITERIA ADOPTED IN CHAPTER 5 AND CHAPTER 8. FLOW PATHS WITH NO OBSERVED SURFACE FLOWS ARE NOT SHOWN IN DRAWING NOS. 60604728/R42b/FIGURE 8.2.1 TO FIGURE 8.2.5.

LEGEND:

	PROJECT BOUNDARY
	500m ASSESSMENT AREA
	LION ROCK COUNTRY PARK
	WALK TRANSECT OF SIX-MONTH ECOLOGICAL FIELD SURVEY
	WALK TRANSECT OF ADDITIONAL FIELD SURVEY
	VANTAGE POINT
	FRESHWATER SAMPLING POINT
	PROPOSED SLOPE STABILIZATION WORKS AREA
	BEACON HILL SSSI
	ARDEID NIGHT ROOST SITE
	SEASONAL NATURAL WATERCOURSE
	NATURAL WATERCOURSE
	MODIFIED WATERCOURSE
	WOODLAND
	MIXED WOODLAND
	PLANTATION
	SHRUBLAND
	DEVELOPED AREA
	ACTIVE AGRICULTURAL LAND
	ABANDONED AGRICULTURAL LAND
	VILLAGE/ORCHARD
	POND

SPECIES OF CONSERVATION IMPORTANCE:

- P1 INCENSE TREE (*AQUILARIA SINENSIS*)
- P2 HONG KONG EAGLE'S CLAW (*ARTABOTRYX HONGKONGENSIS*)
- P3 SILVER-BACK ARTICARPUS (*ARTOCARPUS HYPARGYREUS*)
- P4 BUTULANG CANTHIUM (*CANTHIUM DICOCCUM*)
- P5 LAMB OF TARTARY (*CIBOTIUM BAROMETZ*)
- P6 SMALL PERSIMMON (*DIOSPYROS VACCINIFOLIA*)
- P7 LUOFUSHAN JOINT-FIR (*IGNETUM LUOFUENSE*)
- P8 HAIRY-FRUITED ORSMOSIA (*ORMOSIA PACHYCARPA*)
- P9 HONG KONG PAVETTA (*PAVETTA HONGKONGENSIS*)
- P10 RED AZALEA (*RHOODODENDRON SIMSII*)
- P11 IXONANTHES (*IXONANTHES RETICULATA*)
- P12 *ARALIA CHINENSIS*
- P13 HAIRY CHESTNUT (*CASTANOPSIS CONCINNA*)
- P14 RHODOLEIA (*RHODOLEIA CHAMPSONII*)
- P15 AILANTHUS (*AILANTHUS FORDII*)
- P16 BOTTLEBRUSH ORCHID (*GOODYERA PROCERA*)
- P17 SIAMENSE SELENODESIUM (*SELENODESIUM SIAMENSE*)
- P18 HAINAN HYPOLUTRUM (*HYPOLUTRUM HAINANENSE*)
- P19 *RHOODODENDRON* spp.
- A1 LITTLE EGRET
- A1* LITTLE EGRET (IN-FLIGHT)
- A2 CRESTED GOSHAWK
- A3 BLACK KITE
- A3* BLACK KITE (IN-FLIGHT)
- A4 PEREGRINE FALCON
- A5 GREATER COUCAL
- A6 COLLARED SCOPS OWL
- A7 SPECKLED PICULET
- A8 GREY-CHINNED MINIVET
- A9 ASHY DRONGO
- A10 PYGMY WREN-BABBLER
- A11 RUFIOUS-CAPPED BABBLER
- A12 SILVER-EARED LEIOTHRIX
- A13 ORANGE-BELLIED LEAFBIRD
- A14 BLACK-WINGED CUCKOO-SHRIKE
- A15 CHINESE HWAMEI
- A16 MOUNTAIN BULBUL
- A17 BERSA (IN FLIGHT)
- A18 EASTERN BUZZARD (IN FLIGHT)
- B1 PLAIN HEDGE BLUE
- B2 SMALL YELLOW SAILER
- B3 ORANGE PUNCH
- B4 WHITE-BANDED FLAT
- B5 *ARHOPALA* sp.
- B6 METALLIC CERULEAN
- B7 BARON
- D1 INDOCHINESE COPPERWING
- D2 SMALL CLUBTAIL (Nymph)
- D3 TAWNY HOOKTAIL
- D4 EMERALD CASCADER
- D5 WHITE-BANDED SHADOWDAMEL
- D6 YELLOW-SPOTTED SHADOWDAMEL
- D7 CHINESE YELLOWFACE
- H1 HONG KONG NEWT
- H2 SHORT-LEGGED TOAD
- H3 LESSER SPINY FROG
- H4 TOKAY GECKO
- H5 INDIAN FOREST SKINK
- H6 CHINESE WATER DRAGON
- H7 BROWN FOREST SKINK
- H8 COMMON RAT SNAKE
- M1 RHESUS MACAQUE
- M2 RED MUNTJAC
- M3 INTERMEDIATE HORSESHOE BAT
- M4 HIMALAYAN LEAF-NOSED BAT
- M5 CHINESE NOCTULE
- M6 JAPANESE PIPISTRELLE
- M7 LEAST PIPISTRELLE
- M8 CHINESE PIPISTRELLE
- M9 LESSER BAMBOO BAT
- M10 PALLAS'S SOUVIREL
- F1 *CARDINA SERRATA*
- F2 PREDACEOUS CHUB
- F3 *CRYPTOPTOMAMON ANACOLUTHON*
- F4 HONG KONG FRESHWATER CRAB

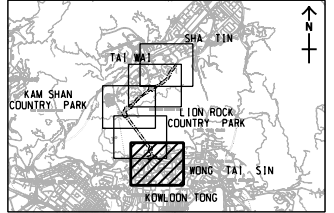
ISSUE/REVISION			
NO.	DATE	DESCRIPTION	CHK.

STATUS
 有效

SCALE
 1:5000

DIMENSION UNIT
 METRES

KEY PLAN
 A3 1:250000



PROJECT NO.
 60604728

AGREEMENT NO.
 CE 48/2018(HY)

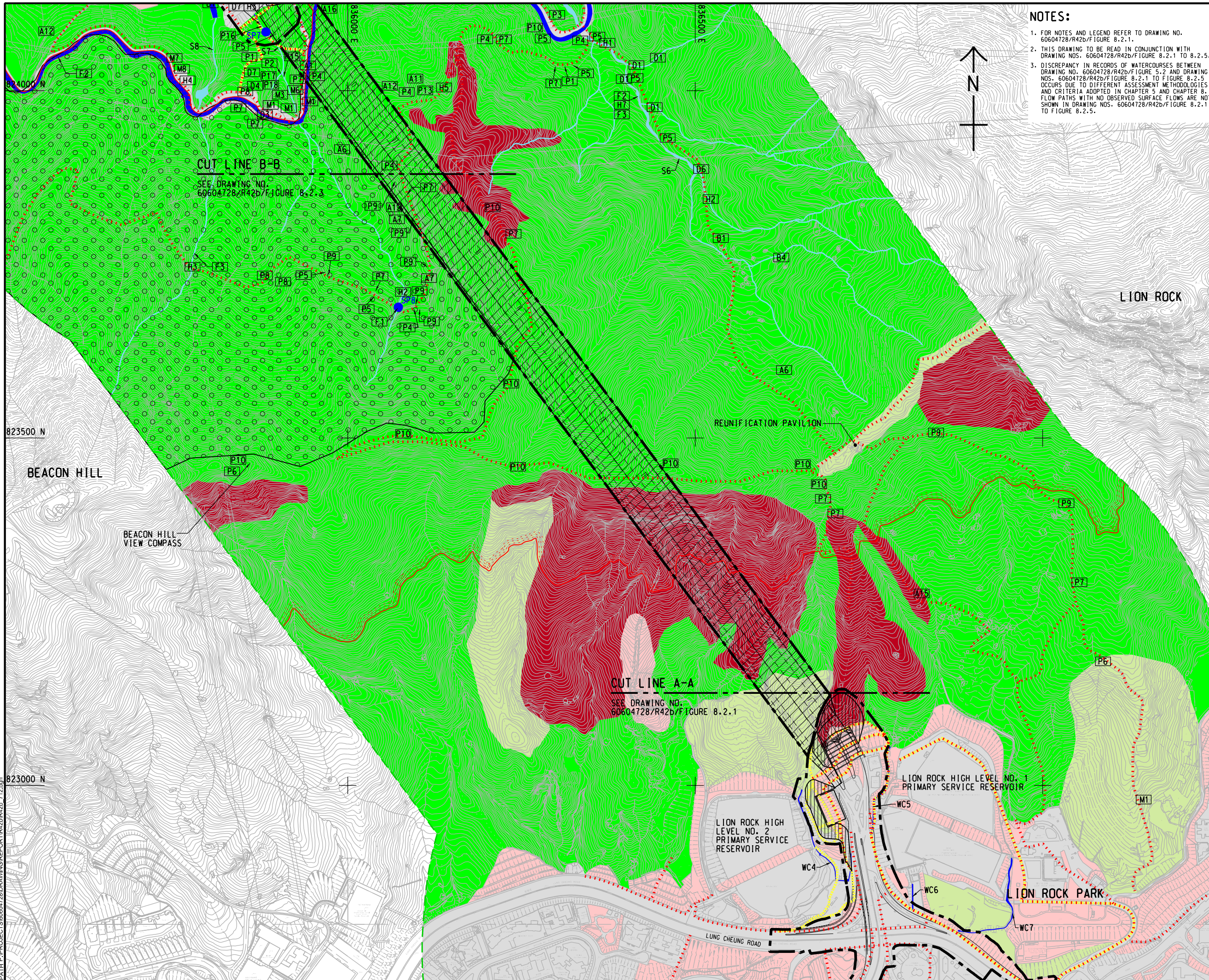
SHEET TITLE
 HABITAT MAP AND LOCATIONS OF SPECIES OF CONSERVATION IMPORTANCE

SHEET NUMBER
 60604728/R42b/FIGURE 8.2.1

SHEET 1 OF 5

This drawing has been prepared for the use of AECOM's client. It may not be used, modified, reproduced or relied upon by third parties, except as agreed by AECOM or as required by law. AECOM accepts no responsibility, and denies any liability, whatsoever, to any party, that uses or relies on this drawing without AECOM's express written consent. All measurements must be obtained from the stated dimensions.

ISO A1 594mm x 841mm
 Approved:
 Checked:
 Designer:
 Project Management Initials:
 2022/06/22
 P:\PROJECTS\60604728\DRAWING\REPORT\60604728_712.dwg
 Plot File by: ZHLZ



- NOTES:**
1. FOR NOTES AND LEGEND REFER TO DRAWING NO. 60604728/R42b/FIGURE 8.2.1.
 2. THIS DRAWING TO BE READ IN CONJUNCTION WITH DRAWING NOS. 60604728/R42b/FIGURE 8.2.1 TO 8.2.5.
 3. DISCREPANCY IN RECORDS OF WATERCOURSES BETWEEN DRAWING NO. 60604728/R42b/FIGURE 5.2 AND DRAWING NOS. 60604728/R42b/FIGURE 8.2.1 TO FIGURE 8.2.5 OCCURS DUE TO DIFFERENT ASSESSMENT METHODOLOGIES AND CRITERIA ADOPTED IN CHAPTER 5 AND CHAPTER 8. FLOW PATHS WITH NO OBSERVED SURFACE FLOWS ARE NOT SHOWN IN DRAWING NOS. 60604728/R42b/FIGURE 8.2.1 TO FIGURE 8.2.5.

AECOM

PROJECT
IMPROVEMENT OF LION ROCK TUNNEL - INVESTIGATION

CLIENT
**路政署
 HIGHWAYS DEPARTMENT**

CONSULTANT
 AECOM Asia Company Ltd.
 www.aecom.com

SUB-CONSULTANTS
 分判工程顧問公司

ISSUE/REVISION

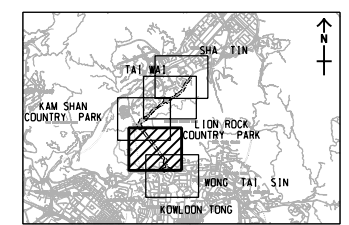
IR	DATE	DESCRIPTION	CHK.

STATUS

SCALE **DIMENSION UNIT**

A3 1 : 5000 METRES

KEY PLAN A3 1 : 250000



PROJECT NO. **AGREEMENT NO.**

60604728 CE 48/2018(HY)

SHEET TITLE

HABITAT MAP AND LOCATIONS OF SPECIES OF CONSERVATION IMPORTANCE

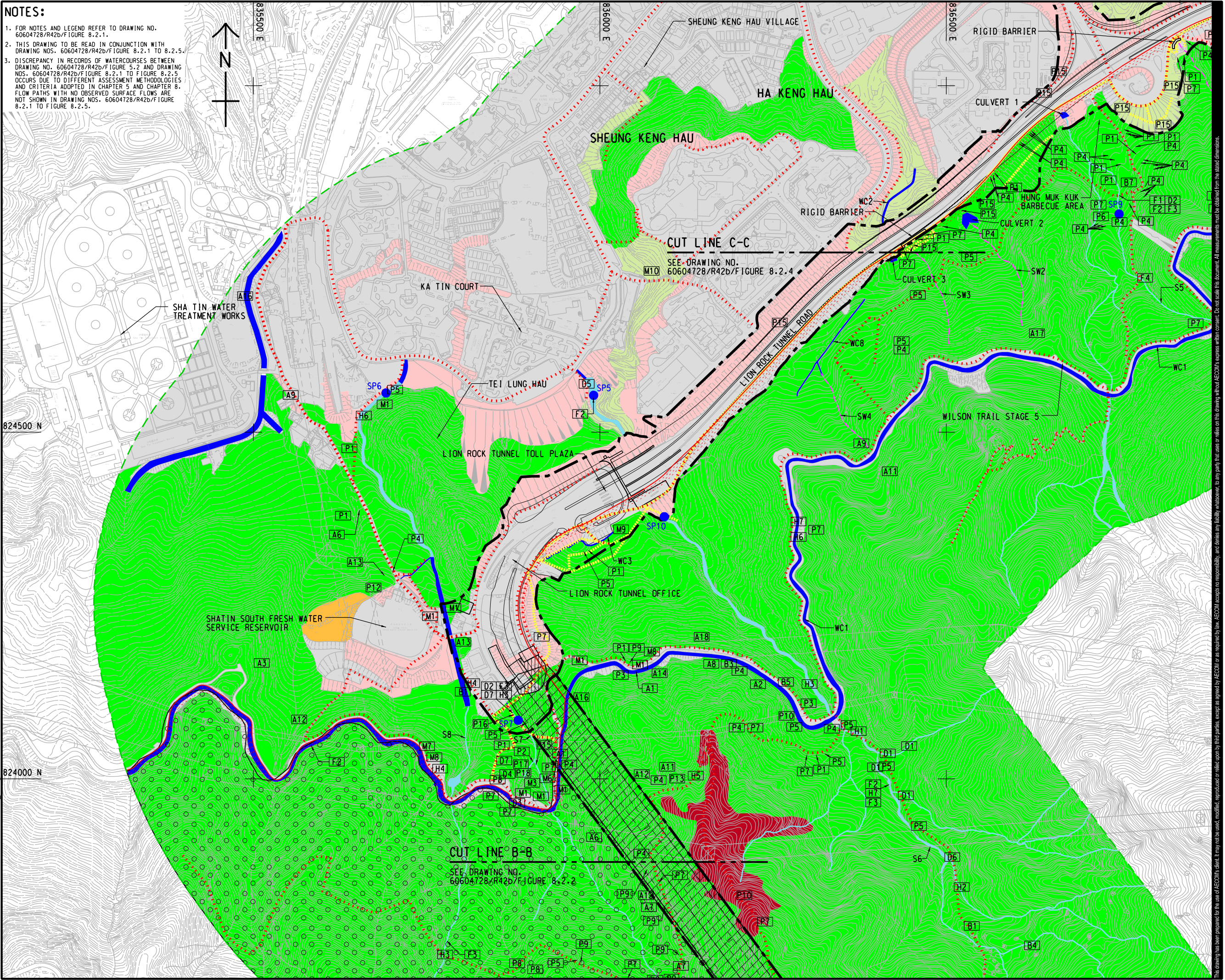
SHEET 2 OF 5

SHEET NUMBER

60604728/R42b/FIGURE 8.2.2

This drawing has been prepared for the use of AECOM's client. It may not be used, modified, reproduced or relied upon by third parties, except as agreed by AECOM or as required by law. AECOM accepts no responsibility, and denies any liability, whatsoever, to any party, that uses or relies on this drawing without AECOM's express written consent. All measurements must be obtained from the stated dimensions.

ISO A1 594mm x 841mm
 Approved:
 Checked:
 Designer:
 Project Management Initials:
 2022/7/19
 PATH PROJECTS/6064728/DRAWING/REPORT/42b/R42b_713.dgn
 Plo File by: ZHLZ



NOTES:

- FOR NOTES AND LEGEND REFER TO DRAWING NO. 60604728/R42b/FIGURE 8.2.1.
- THIS DRAWING TO BE READ IN CONJUNCTION WITH DRAWING NOS. 60604728/R42b/FIGURE 8.2.1 TO 8.2.5.
- DISCREPANCY IN RECORDS OF WATERCOURSES BETWEEN DRAWING NO. 60604728/R42b/FIGURE 5.2 AND DRAWING NOS. 60604728/R42b/FIGURE 8.2.1 TO FIGURE 8.2.5 OCCURS DUE TO DIFFERENT ASSESSMENT METHODOLOGIES AND CRITERIA ADOPTED IN CHAPTER 5 AND CHAPTER 8. FLOW PATHS WITH NO OBSERVED SURFACE FLOWS ARE NOT SHOWN IN DRAWING NOS. 60604728/R42b/FIGURE 8.2.1 TO FIGURE 8.2.5.

AECOM

PROJECT
 IMPROVEMENT OF LION ROCK TUNNEL - INVESTIGATION

CLIENT
 路政署
 HIGHWAYS DEPARTMENT

CONSULTANT
 AECOM Asia Company Ltd.
 www.aecom.com

SUB-CONSULTANTS
 分列工程顧問公司

ISSUE/REVISION

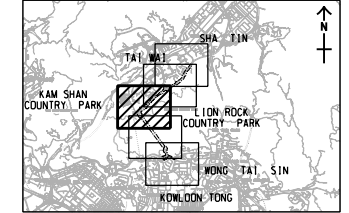
NO.	DATE	DESCRIPTION	CHK.

STATUS
 NOT

SCALE **DIMENSION UNIT**

A3 1:5000 METRES

KEY PLAN A3 1:250000



PROJECT NO. **AGREEMENT NO.**

60604728 CE 48/2018(HY)

SHEET TITLE

HABITAT MAP AND LOCATIONS OF SPECIES OF CONSERVATION IMPORTANCE

SHEET 3 OF 5

SHEET NUMBER

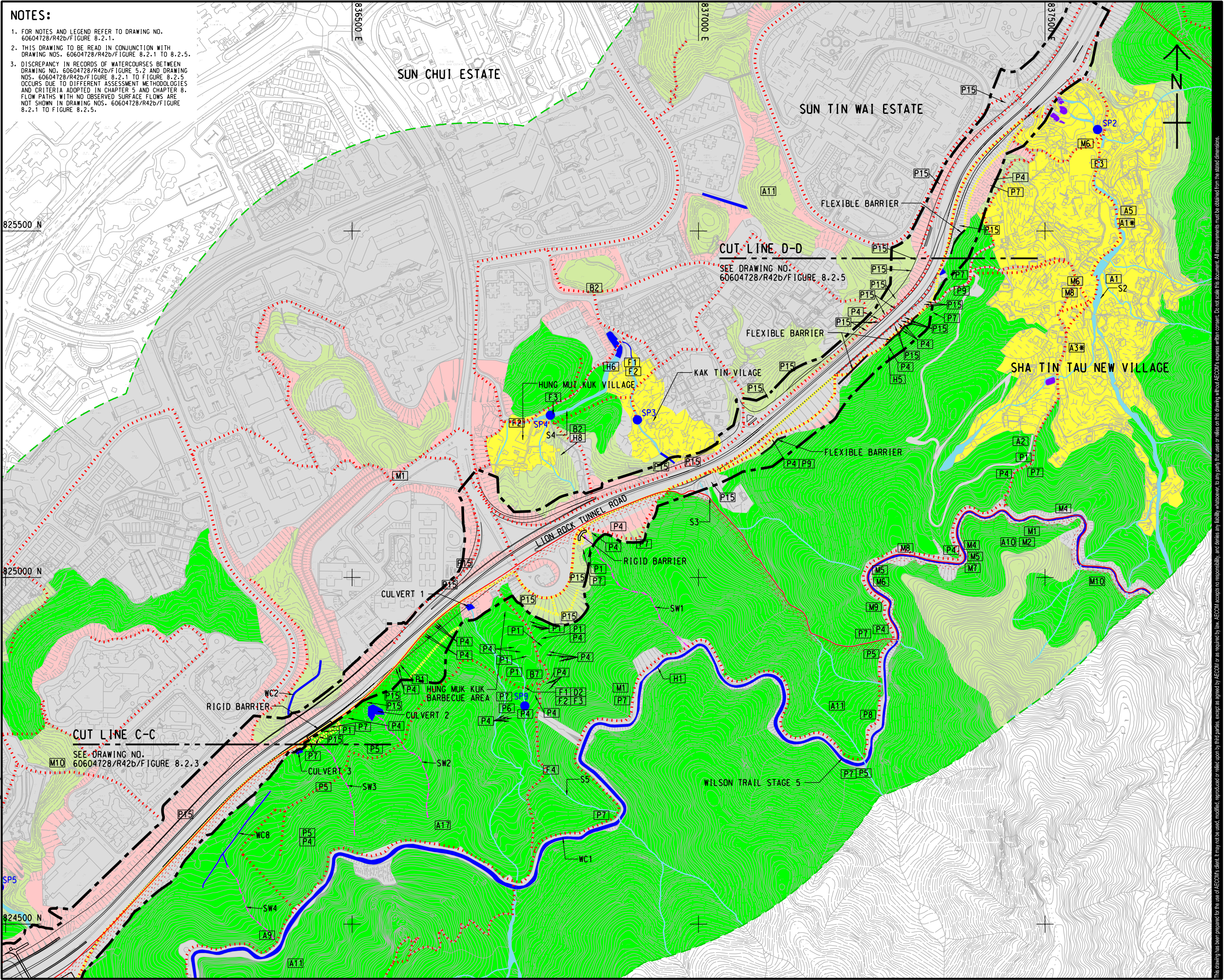
60604728/R42b/FIGURE 8.2.3

This drawing has been prepared for the use of AECOM's client. It may not be used, modified, reproduced or relied upon by third parties, except as agreed by AECOM or as required by law. AECOM accepts no responsibility, and disclaims any liability, whatsoever, for any part, that is used or relied on in this drawing without AECOM's express written consent. All measurements must be obtained from the stated dimensions.

ISO A1 594mm x 841mm
 Approved:
 Checked:
 Designer:
 Project Management Initials:
 2022/7/27
 P:\PROJECTS\60604728\DRAWING\REPORT\60604728-714.dgn
 Plot File by: ZHLZ

NOTES:

- FOR NOTES AND LEGEND REFER TO DRAWING NO. 60604728/R42b/FIGURE 8.2.1.
- THIS DRAWING TO BE READ IN CONJUNCTION WITH DRAWING NOS. 60604728/R42b/FIGURE 8.2.1 TO 8.2.5.
- DISCREPANCY IN RECORDS OF WATERCOURSES BETWEEN DRAWING NO. 60604728/R42b/FIGURE 5.2 AND DRAWING NOS. 60604728/R42b/FIGURE 8.2.1 TO FIGURE 8.2.5 OCCURS DUE TO DIFFERENT ASSESSMENT METHODOLOGIES AND CRITERIA ADOPTED IN CHAPTER 5 AND CHAPTER 8. FLOW PATHS WITH NO OBSERVED SURFACE FLOWS ARE NOT SHOWN IN DRAWING NOS. 60604728/R42b/FIGURE 8.2.1 TO FIGURE 8.2.5.



ISSUE/REVISION

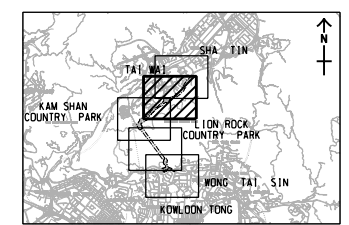
IR	DATE	DESCRIPTION	CHK.

STATUS
 1/1/2022

SCALE
 1:5000

DIMENSION UNIT
 METRES

KEY PLAN A3 1:250000



PROJECT NO.
 60604728

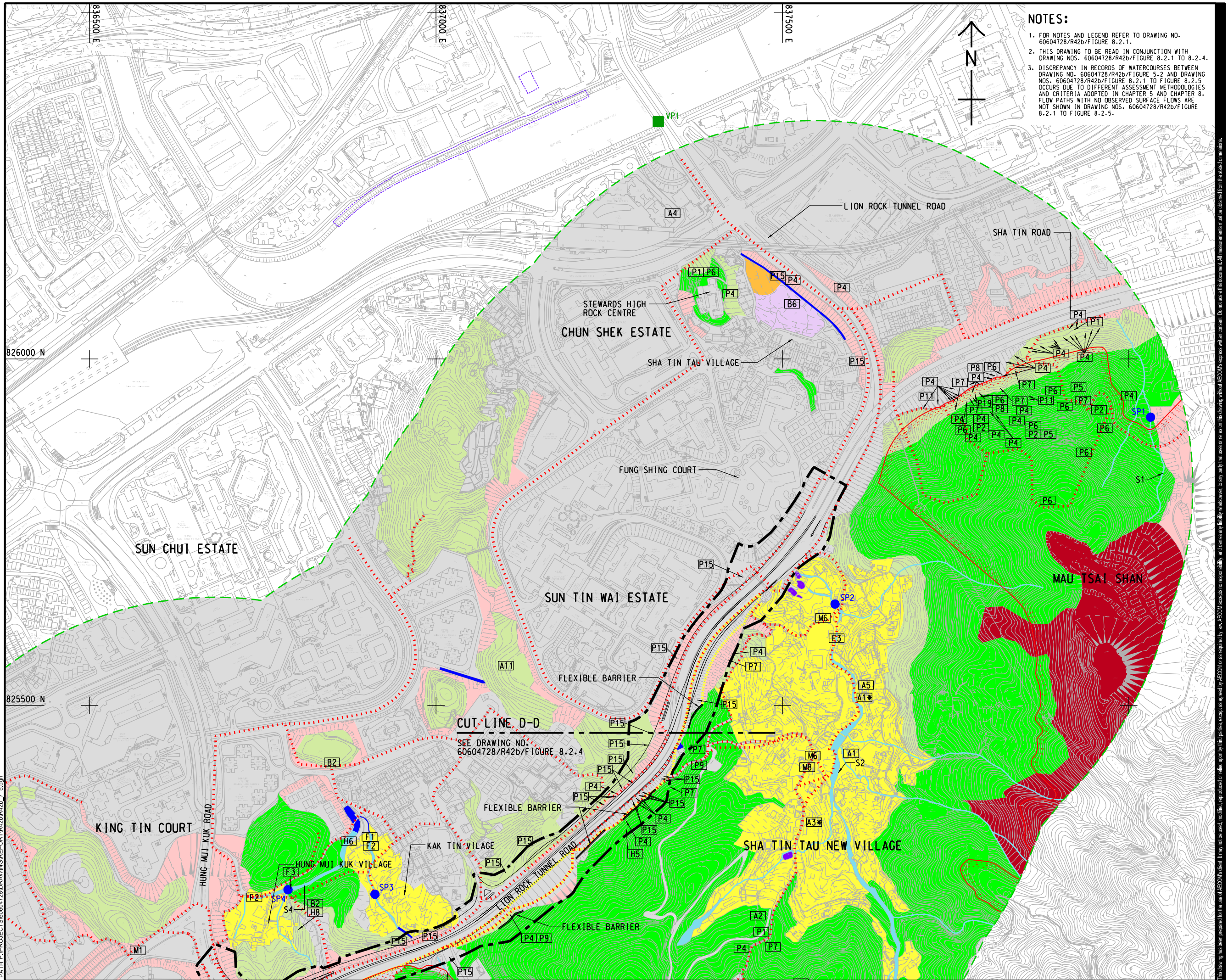
AGREEMENT NO.
 CE 48/2018(HY)

SHEET TITLE
 HABITAT MAP AND LOCATIONS
 OF SPECIES OF CONSERVATION
 IMPORTANCE

SHEET NUMBER
 60604728/R42b/FIGURE 8.2.4

SHEET 4 OF 5

This drawing has been prepared for the use of AECOM's client. It may not be used, modified, reproduced or relied upon by third parties, except as agreed by AECOM or as required by law. AECOM accepts no responsibility, and denies any liability whatsoever, for any part, that less or relies on this drawing without AECOM's express written consent. All measurements must be obtained from the stated dimensions.



NOTES:

- FOR NOTES AND LEGEND REFER TO DRAWING NO. 60604728/R42b/Figure 8.2.1.
- THIS DRAWING TO BE READ IN CONJUNCTION WITH DRAWING NOS. 60604728/R42b/Figure 8.2.1 TO 8.2.4.
- DISCREPANCY IN RECORDS OF WATERCOURSES BETWEEN DRAWING NO. 60604728/R42b/Figure 5.2 AND DRAWING NOS. 60604728/R42b/Figure 8.2.1 TO Figure 8.2.5 OCCURS DUE TO DIFFERENT ASSESSMENT METHODOLOGIES AND CRITERIA ADOPTED IN CHAPTER 5 AND CHAPTER 8. FLOW PATHS WITH NO OBSERVED SURFACE FLOWS ARE NOT SHOWN IN DRAWING NOS. 60604728/R42b/Figure 8.2.1 TO Figure 8.2.5.

AECOM

PROJECT
 60604728/R42b/Figure 8.2.5

IMPROVEMENT OF LION ROCK TUNNEL - INVESTIGATION

CLIENT
 路政署
HIGHWAYS DEPARTMENT

CONSULTANT
 AECOM Asia Company Ltd.
 www.aecom.com

SUB-CONSULTANTS
 分列工程顧問公司

ISSUE/REVISION

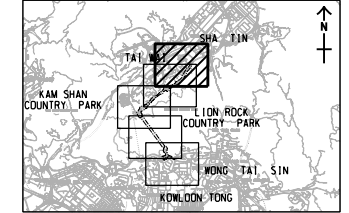
NO.	DATE	DESCRIPTION	CHK.

STATUS
 1/1

SCALE
 1:5000

DIMENSION UNIT
 METRES

KEY PLAN A3 1:250000



PROJECT NO.
 60604728

AGREEMENT NO.
 CE 48/2018(HY)

SHEET TITLE
 HABITAT MAP AND LOCATIONS OF SPECIES OF CONSERVATION IMPORTANCE

SHEET NUMBER
 60604728/R42b/Figure 8.2.5

SHEET 5 OF 5

This drawing has been prepared for the use of AECOM's client. It may not be used, modified, reproduced or relied upon by third parties, except as agreed by AECOM or as required by law. AECOM accepts no responsibility, and disclaims any liability, whatsoever, for any part, that is less or more than this drawing, without AECOM's express written consent. All measurements must be obtained from the stated dimensions.