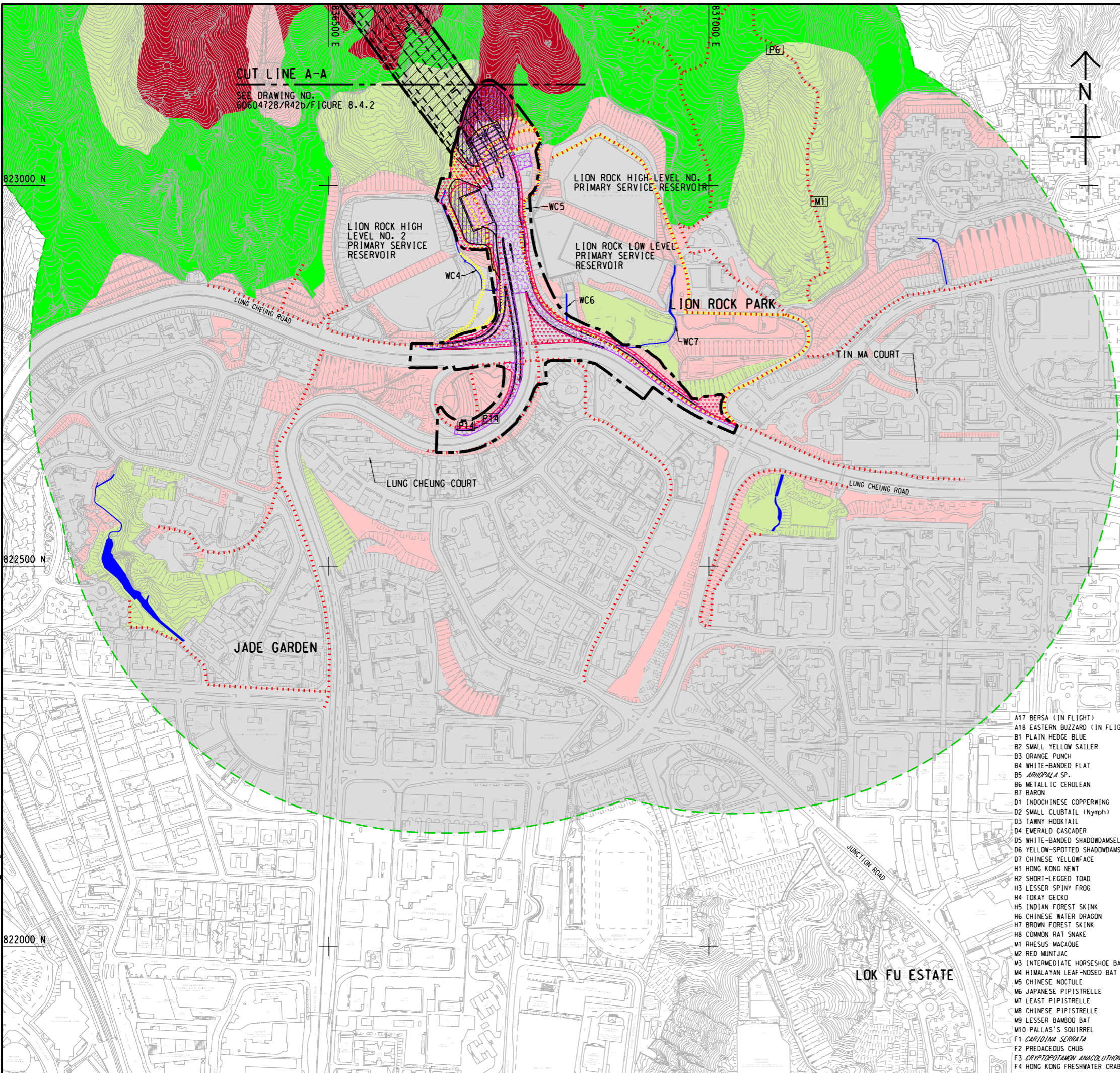


ISO A1 594mm x 841mm  
 Approved:  
 Checked:  
 Designer:  
 Project Management Initials:  
 2022/06/22  
 P:\PROJECTS\60604728\DRAWING\REPORT\60604728\_741.dgn  
 822000 N  
 822500 N  
 823000 N



**NOTES:**

1. THIS DRAWING TO BE READ IN CONJUNCTION WITH DRAWING NOS. 60604728/R42b/FIGURE 8.4.2 TO 8.4.5.
2. DISCREPANCY IN RECORDS OF WATERCOURSES BETWEEN DRAWING NO. 60604728/R42b/FIGURE 5.2 AND DRAWING NOS. 60604728/R42b/FIGURE 8.4.1 TO FIGURE 8.4.5 OCCURS DUE TO DIFFERENT ASSESSMENT METHODOLOGIES AND CRITERIA ADOPTED IN CHAPTER 5 AND CHAPTER 8. FLOW PATHS WITH NO OBSERVED SURFACE FLOWS ARE NOT SHOWN IN DRAWING NOS. 60604728/R42b/FIGURE 8.4.1 TO FIGURE 8.4.5.

**LEGEND:**

- PROJECT BOUNDARY
- 500m ASSESSMENT AREA
- LION ROCK COUNTRY PARK
- WALK TRANSECT OF SIX-MONTH ECOLOGICAL FIELD SURVEY
- WALK TRANSECT OF ADDITIONAL FIELD SURVEY
- VANTAGE POINT
- VP1
- SP
- FRESHWATER SAMPLING POINT
- UNDERGROUND WORKS:**
- UNDERGROUND TUNNEL IMPROVEMENT WORKS
- ABOVEGROUND WORKS**
- PERMANENTLY AFFECTED AREA
- TEMPORARILY AFFECTED AREA
- PROPOSED SLOPE STABILIZATION WORKS AREA
- BEACON HILL SSSI
- ARDEID NIGHT ROOST SITE
- SEASONAL NATURAL WATERCOURSE
- NATURAL WATERCOURSE
- MODIFIED WATERCOURSE
- WOODLAND
- MIXED WOODLAND
- PLANTATION
- SHRUBLAND
- DEVELOPED AREA
- ACTIVE AGRICULTURAL LAND
- ABANDONED AGRICULTURAL LAND
- VILLAGE/ORCHARD
- POND

**SPECIES OF CONSERVATION IMPORTANCE:**

- A17 BERSA (IN FLIGHT)
- A18 EASTERN BUZZARD (IN FLIGHT)
- B1 PLAIN HEDGE BLUE
- B2 SMALL YELLOW SAILER
- B3 ORANGE PUNCH
- B4 WHITE-BANDED FLAT
- B5 RHODPALA SP.
- B6 METALLIC CERULEAN
- B7 BARON
- D1 INDOCHINESE COPPERWING
- D2 SMALL CLUBTAIL (Nymph)
- D3 TAWNY HOOKTAIL
- D4 EMERALD CASCADER
- D5 WHITE-BANDED SHADOWDAMSEL
- D6 YELLOW-SPOTTED SHADOWDAMSEL
- D7 CHINESE YELLOWFACE
- H1 HONG KONG NEWT
- H2 SHORT-LEGGED TOAD
- H3 LESSER SPINY FROG
- H4 TOKAY GECKO
- H5 INDIAN FOREST SKINK
- H6 CHINESE WATER DRAGON
- H7 BROWN FOREST SKINK
- H8 COMMON RAT SNAKE
- M1 RHESUS MACAQUE
- M2 RED MUNJAC
- M3 INTERMEDIATE HORSESHOE BAT
- M4 HIMALAYAN LEAF-NOSED BAT
- M5 CHINESE NOCTULE
- M6 JAPANESE PIPISTRELLE
- M7 LEAST PIPISTRELLE
- M8 CHINESE PIPISTRELLE
- M9 LESSER BAMBOO BAT
- M10 PALLAS'S SOUIRREL
- F1 *CARDINA SERRATA*
- F2 PREDACEOUS CHUB
- F3 *CRYPTOPTOMAM ANACOLITHON*
- F4 HONG KONG FRESHWATER CRAB
- P1 INCENSE TREE (*AQUILARIA SINENSIS*)
- P2 HONG KONG EAGLE'S CLAW (*ARTOCARPUS HONGKONGENSIS*)
- P3 SILVER-BACK ARTICARPUS (*ARTOCARPUS HYPARCYREUS*)
- P4 BUTULANG CANTHIUM (*CANTHIUM DICOCCUM*)
- P5 LAMB OF TARTARY (*CIBOTIUM BAROMETZ*)
- P6 SMALL PERSIMMON (*DIOSPIROS VACCINIOIDES*)
- P7 LUOFUSHAN JOINT-FIR (*QUERCUS LUOFUENSIS*)
- P8 HAIRY-FRUITED ORMOSIA (*ORMOSIA PACHYCARPA*)
- P9 HONG KONG PAVETTA (*PAVETTA HONGKONGENSIS*)
- P10 RED AZALEA (*RHOZZODENDRON SIMSII*)
- P11 IXONANTHES (*IXONANTHES RETICULATA*)
- P12 *ARALIA CHINENSIS*
- P13 HAIRY CHESTNUT (*CASTANOPSIS CONCINNA*)
- P14 RHODOLEIA (*RHODOLEIA CHAMPSONII*)
- P15 AILANTHUS (*AILANTHUS FORDII*)
- P16 BOTTLEBRUSH ORCHID (*GOODYERA PROCERA*)
- P17 SIAMENSE SELENODESMIUM (*SELENODESMIUM SIAMENSE*)
- P18 HAINAN HYPOLUTRUM (*HYPOLUTRUM HAINANENSE*)
- P19 *RHOZZODENDRON* SPP.
- A1 LITTLE EGRET
- A1\* LITTLE EGRET (IN-FLIGHT)
- A2 CRESTED GOSHAWK
- A3 BLACK KITE
- A3\* BLACK KITE (IN-FLIGHT)
- A4 PEREGRINE FALCON
- A5 GREATER COUCAL
- A6 COLLARED SCOPS OWL
- A7 SPECKLED PICULET
- A8 GREY-CHINNED MINIVET
- A9 ASHY DRONGO
- A10 PYGMY WREN-BABBLER
- A11 RUFIOUS-CAPPED BABBLER
- A12 SILVER-EARED LEIOTHRIX
- A13 ORANGE-BELLIED LEAFBIRD
- A14 BLACK-WINGED CUCKOO-SHRIKE
- A15 CHINESE HWAMEI
- A16 MOUNTAIN BULBUL

**AECOM**

PROJECT  
 项目

**IMPROVEMENT OF LION ROCK TUNNEL - INVESTIGATION**

CLIENT  
 客户

**路政署  
 HIGHWAYS DEPARTMENT**

CONSULTANT  
 顾问公司

AECOM Asia Company Ltd.  
 www.aecom.com

SUB-CONSULTANTS  
 分判工程顾问公司

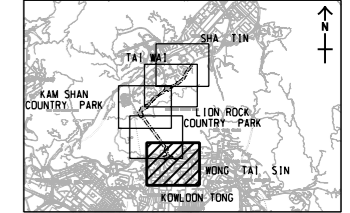
**ISSUE/REVISION**

IR	DATE	DESCRIPTION	CHK.

**STATUS**

**SCALE** 比例尺: A3 1:5000  
**DIMENSION UNIT** 尺寸单位: METRES

**KEY PLAN** A3 1:250000

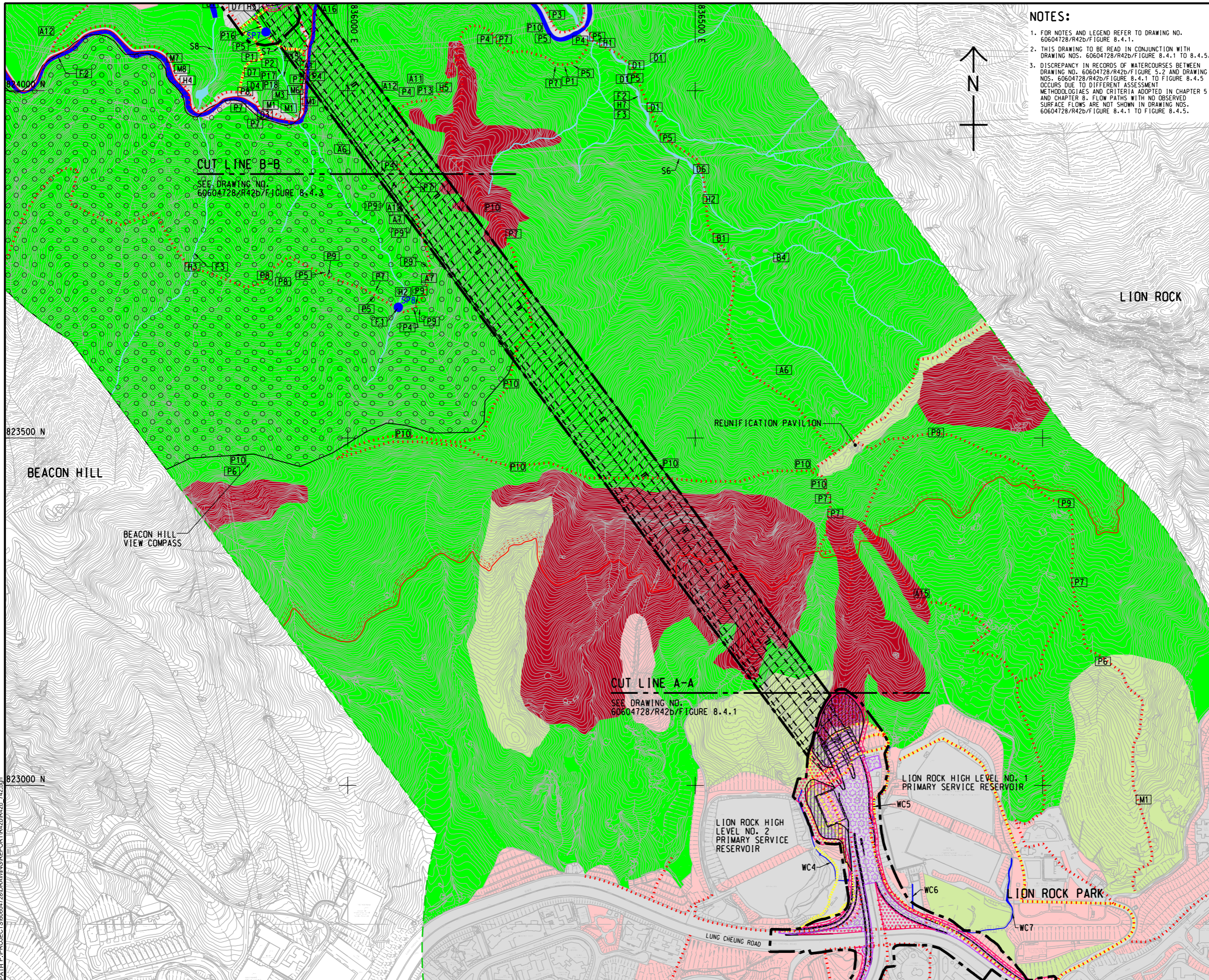


**PROJECT NO.** 项目编号: 60604728  
**AGREEMENT NO.** 协议编号: CE 48/2018(HY)

**SHEET TITLE** 图名: PERMANENTLY AND TEMPORARILY AFFECTED AREA

**SHEET NUMBER** 图号: 60604728/R42b/FIGURE 8.4.1

ISO A1 594mm x 841mm  
 Approved: \_\_\_\_\_  
 Checked: \_\_\_\_\_  
 Designer: \_\_\_\_\_  
 Project Management Initials: \_\_\_\_\_  
 2022/06/22  
 PATH PROJECTS\60604728\DRAWING\REPORT\420\42b\_742.dwg  
 This drawing has been prepared for the use of AECOM's client. It may not be used, modified, reproduced or relied upon by third parties, except as agreed by AECOM or as required by law. AECOM accepts no responsibility, and denies any liability, whatsoever, for any part, that uses or relies on this drawing without AECOM's express written consent. All measurements must be obtained from the stated dimensions.



- NOTES:**
1. FOR NOTES AND LEGEND REFER TO DRAWING NO. 60604728/R42b/FIGURE 8.4.1.
  2. THIS DRAWING TO BE READ IN CONJUNCTION WITH DRAWING NOS. 60604728/R42b/FIGURE 8.4.1 TO 8.4.5.
  3. DISCREPANCY IN RECORDS OF WATERCOURSES BETWEEN DRAWING NO. 60604728/R42b/FIGURE 5.2 AND DRAWING NOS. 60604728/R42b/FIGURE 8.4.1 TO FIGURE 8.4.5 OCCURS DUE TO DIFFERENT ASSESSMENT METHODOLOGIES AND CRITERIA ADOPTED IN CHAPTER 5 AND CHAPTER 8. FLOW PATHS WITH NO OBSERVED SURFACE FLOWS ARE NOT SHOWN IN DRAWING NOS. 60604728/R42b/FIGURE 8.4.1 TO FIGURE 8.4.5.

**AECOM**

PROJECT  
**IMPROVEMENT OF LION ROCK TUNNEL - INVESTIGATION**

CLIENT  
**HIGHWAYS DEPARTMENT**

CONSULTANT  
 AECOM Asia Company Ltd.  
 www.aecom.com

SUB-CONSULTANTS  
 分判工程顧問公司

**ISSUE/REVISION**

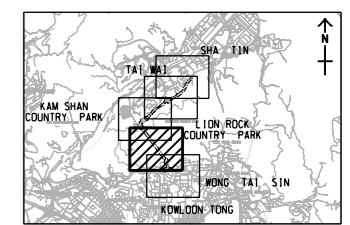
IR	DATE	DESCRIPTION	CHK.

**STATUS**  
 10/21

**SCALE**      **DIMENSION UNIT**

A3 1 : 5000      METRES

**KEY PLAN**      A3 1 : 250000



**PROJECT NO.**      **AGREEMENT NO.**

60604728      CE 48/2018(HY)

**SHEET TITLE**

PERMANENTLY AND TEMPORARILY AFFECTED AREA

SHEET 2 OF 5

**SHEET NUMBER**

60604728/R42b/FIGURE 8.4.2