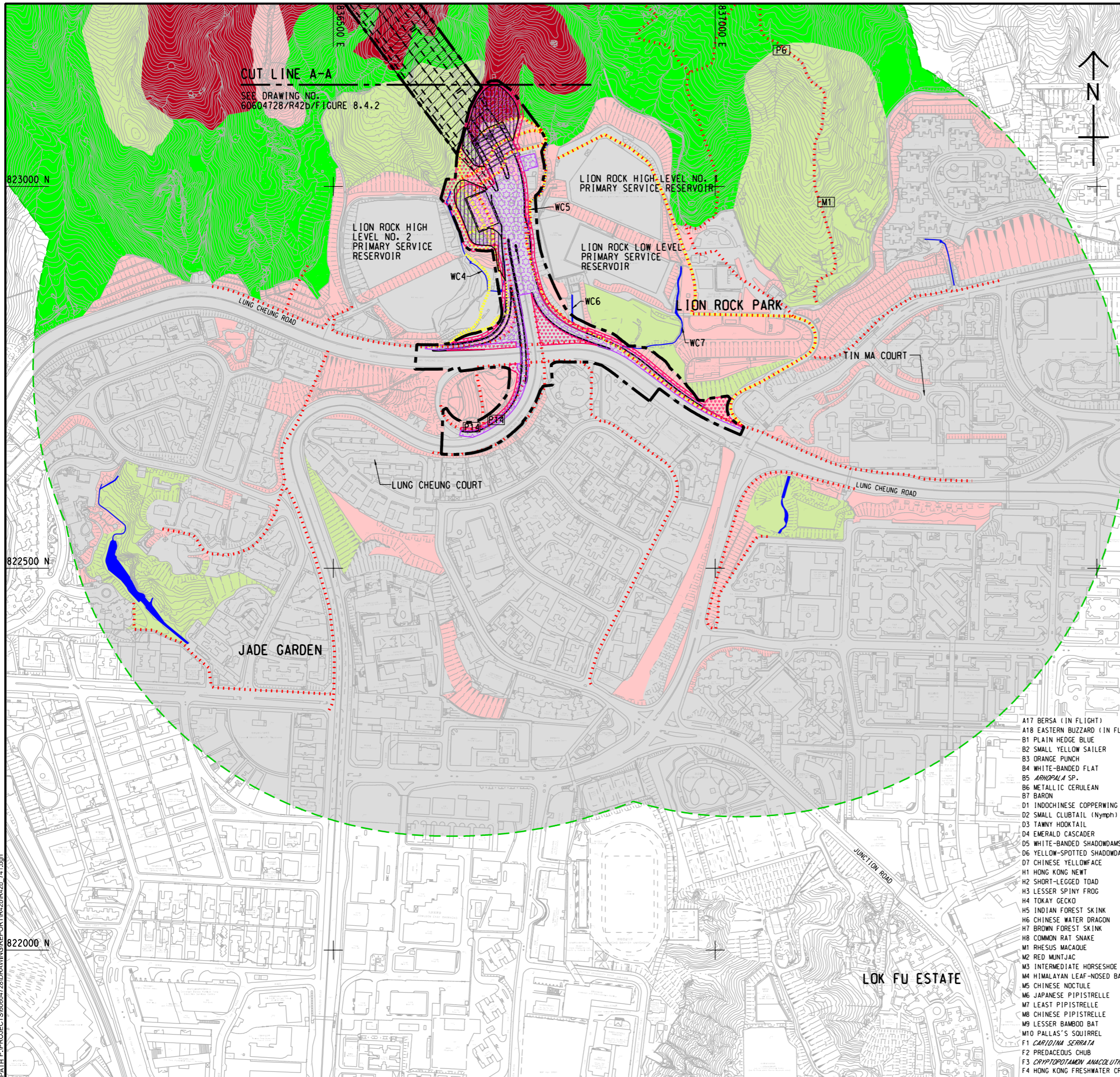


ISO A1 594mm x 841mm
 Approved:
 Checked:
 Designer:
 Project Management Initials:
 2022/06/22
 P:\PROJECTS\60604728\DRAWING\REPORT\60604728_741.dgn
 822000 N
 822500 N
 823000 N



NOTES:

1. THIS DRAWING TO BE READ IN CONJUNCTION WITH DRAWING NOS. 60604728/R42b/FIGURE 8.4.2 TO 8.4.5.
2. DISCREPANCY IN RECORDS OF WATERCOURSES BETWEEN DRAWING NO. 60604728/R42b/FIGURE 5.2 AND DRAWING NOS. 60604728/R42b/FIGURE 8.4.1 TO FIGURE 8.4.5 OCCURS DUE TO DIFFERENT ASSESSMENT METHODOLOGIES AND CRITERIA ADOPTED IN CHAPTER 5 AND CHAPTER 8. FLOW PATHS WITH NO OBSERVED SURFACE FLOWS ARE NOT SHOWN IN DRAWING NOS. 60604728/R42b/FIGURE 8.4.1 TO FIGURE 8.4.5.

LEGEND:

- PROJECT BOUNDARY
- 500m ASSESSMENT AREA
- LION ROCK COUNTRY PARK
- WALK TRANSECT OF SIX-MONTH ECOLOGICAL FIELD SURVEY
- WALK TRANSECT OF ADDITIONAL FIELD SURVEY
- VANTAGE POINT
- VP1
- SP
- FRESHWATER SAMPLING POINT
- UNDERGROUND TUNNEL IMPROVEMENT WORKS
- ABOVEGROUND WORKS
- PERMANENTLY AFFECTED AREA
- TEMPORARILY AFFECTED AREA
- PROPOSED SLOPE STABILIZATION WORKS AREA
- BEACON HILL SSSI
- ARDEID NIGHT ROOST SITE
- SEASONAL NATURAL WATERCOURSE
- NATURAL WATERCOURSE
- MODIFIED WATERCOURSE
- WOODLAND
- MIXED WOODLAND
- PLANTATION
- SHRUBLAND
- DEVELOPED AREA
- ACTIVE AGRICULTURAL LAND
- ABANDONED AGRICULTURAL LAND
- VILLAGE/ORCHARD
- POND

SPECIES OF CONSERVATION IMPORTANCE:

- A17 BERSA (IN FLIGHT)
- A18 EASTERN BUZZARD (IN FLIGHT)
- B1 PLAIN HEDGE BLUE
- B2 SMALL YELLOW SAILER
- B3 ORANGE PUNCH
- B4 WHITE-BANDED FLAT
- B5 RHODALA SP.
- B6 METALLIC CERULEAN
- B7 BARON
- D1 INDOCHINESE COPPERWING
- D2 SMALL CLUBTAIL (Nymph)
- D3 TAWNY HOOKTAIL
- D4 EMERALD CASCADER
- D5 WHITE-BANDED SHADOWDAMSEL
- D6 YELLOW-SPOTTED SHADOWDAMSEL
- D7 CHINESE YELLOWFACE
- H1 HONG KONG NEWT
- H2 SHORT-LEGGED TOAD
- H3 LESSER SPINY FROG
- H4 TOKAY GECKO
- H5 INDIAN FOREST SKINK
- H6 CHINESE WATER DRAGON
- H7 BROWN FOREST SKINK
- H8 COMMON RAT SNAKE
- M1 RHESUS MACAQUE
- M2 RED MUNTJAC
- M3 INTERMEDIATE HORSESHOE BAT
- M4 HIMALAYAN LEAF-NOSED BAT
- M5 CHINESE NOCTULE
- M6 JAPANESE PIPISTRELLE
- M7 LEAST PIPISTRELLE
- M8 CHINESE PIPISTRELLE
- M9 LESSER BAMBOO BAT
- M10 PALLAS'S SOUIRREL
- F1 *CARDINA SERRATA*
- F2 PREDACEOUS CHUB
- F3 *CRYPTOPTOMAM ANACOLITHON*
- F4 HONG KONG FRESHWATER CRAB
- P1 INCENSE TREE (*AQUILARIA SINENSIS*)
- P2 HONG KONG EAGLE'S CLAW (*ARTOCARPUS HONGKONGENSIS*)
- P3 SILVER-BACK ARTICARPUS (*ARTOCARPUS HYPARCYREUS*)
- P4 BUTULANG CANTHIUM (*CANTHIUM DICOCCUM*)
- P5 LAMB OF TARTARY (*CIBOTIUM BAROMETZ*)
- P6 SMALL PERSIMMON (*DIOSPIROS VACCINIOIDES*)
- P7 LUOFUSHAN JOINT-FIR (*QUERCUS LUOFUENSIS*)
- P8 HAIRY-FRUITED ORMOSIA (*ORMOSIA PACHYCARPA*)
- P9 HONG KONG PAVETTA (*PAVETTA HONGKONGENSIS*)
- P10 RED AZALEA (*RHOZZODENDRON SIMSII*)
- P11 IXONANTHES (*IXONANTHES RETICULATA*)
- P12 *ARALIA CHINENSIS*
- P13 HAIRY CHESTNUT (*CASTANOPSIS CONCINNA*)
- P14 RHODOLEIA (*RHODOLEIA CHAMPIONII*)
- P15 AILANTHUS (*AILANTHUS FORDII*)
- P16 BOTTLEBRUSH ORCHID (*GOODYERA PROCERA*)
- P17 SIAMENSE SELENODESMIUM (*SELENODESMIUM SIAMENSE*)
- P18 HAINAN HYPOLUTRUM (*HYPOLUTRUM HAINANENSE*)
- P19 *RHOZZODENDRON* SPP.
- A1 LITTLE EGRET
- A1* LITTLE EGRET (IN-FLIGHT)
- A2 CRESTED GOSHAWK
- A3 BLACK KITE
- A3* BLACK KITE (IN-FLIGHT)
- A4 PEREGRINE FALCON
- A5 GREATER CUCUL
- A6 COLLARED SCOPS OWL
- A7 SPECKLED PICULET
- A8 GREY-CHINNED MINIVET
- A9 ASHY DRONGO
- A10 PYGMY WREN-BABBLER
- A11 RUFOUS-CAPPED BABBLER
- A12 SILVER-EARED LEIOTHRIX
- A13 ORANGE-BELLIED LEAFBIRD
- A14 BLACK-WINGED CUCKOO-SHRIKE
- A15 CHINESE HWAMEI
- A16 MOUNTAIN BULBUL

AECOM

PROJECT
 60604728/R42b/FIGURE 8.4.1

IMPROVEMENT OF LION ROCK TUNNEL - INVESTIGATION

CLIENT
 路政署
HIGHWAYS DEPARTMENT

CONSULTANT
 AECOM Asia Company Ltd.
 www.aecom.com

SUB-CONSULTANTS
 分列工程顧問公司

ISSUE/REVISION

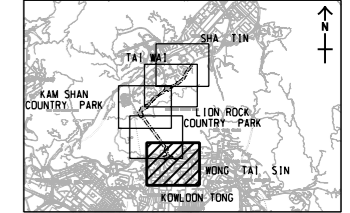
IR	DATE	DESCRIPTION	CHK.

STATUS
 10/21

SCALE
 1:5000

DIMENSION UNIT
 METRES

KEY PLAN A3 1:250000



PROJECT NO.
 60604728

AGREEMENT NO.
 CE 48/2018(HY)

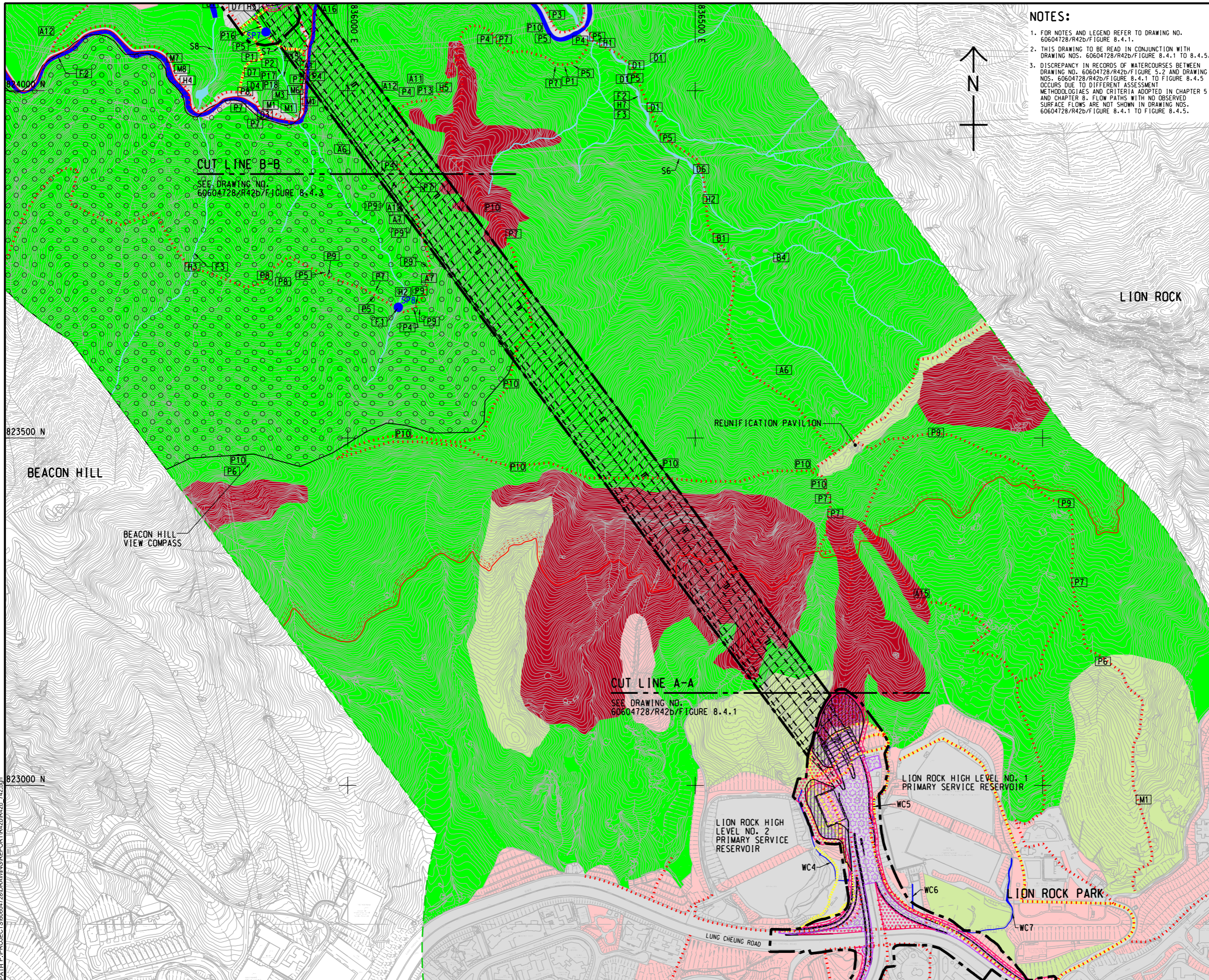
SHEET TITLE
 PERMANENTLY AND TEMPORARILY AFFECTED AREA

SHEET NUMBER
 60604728/R42b/FIGURE 8.4.1

SHEET 1 OF 5

This drawing has been prepared for the use of AECOM's client. It may not be used, modified, reproduced or relied upon by third parties, except as agreed by AECOM or as required by law. AECOM accepts no responsibility, and disclaims any liability, whatsoever, for any part, that is used or relied on in this drawing without AECOM's express written consent. All measurements must be obtained from the stated dimensions.

ISO A1 594mm x 841mm
 Approved:
 Checked:
 Designer:
 Project Management Initials:
 2022/06/22
 PATH PROJECTS\60604728\DRAWING\REPORT\420142b_742.dwg
 Plot File by: ZHLZ



- NOTES:**
1. FOR NOTES AND LEGEND REFER TO DRAWING NO. 60604728/R42b/FIGURE 8.4.1.
 2. THIS DRAWING TO BE READ IN CONJUNCTION WITH DRAWING NOS. 60604728/R42b/FIGURE 8.4.1 TO 8.4.5.
 3. DISCREPANCY IN RECORDS OF WATERCOURSES BETWEEN DRAWING NO. 60604728/R42b/FIGURE 5.2 AND DRAWING NOS. 60604728/R42b/FIGURE 8.4.1 TO FIGURE 8.4.5 OCCURS DUE TO DIFFERENT ASSESSMENT METHODOLOGIES AND CRITERIA ADOPTED IN CHAPTER 5 AND CHAPTER 8. FLOW PATHS WITH NO OBSERVED SURFACE FLOWS ARE NOT SHOWN IN DRAWING NOS. 60604728/R42b/FIGURE 8.4.1 TO FIGURE 8.4.5.

AECOM

PROJECT
IMPROVEMENT OF LION ROCK TUNNEL - INVESTIGATION

CLIENT
HIGHWAYS DEPARTMENT

CONSULTANT
 AECOM Asia Company Ltd.
 www.aecom.com

SUB-CONSULTANTS
 分判工程顧問公司

ISSUE/REVISION

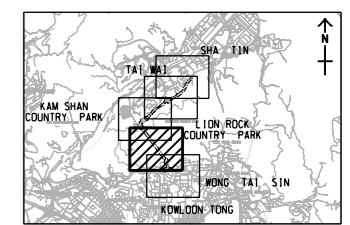
IR	DATE	DESCRIPTION	CHK.

STATUS

SCALE **DIMENSION UNIT**

A3 1 : 5000 METRES

KEY PLAN A3 1 : 250000



PROJECT NO. **AGREEMENT NO.**

60604728 CE 48/2018(HY)

SHEET TITLE

PERMANENTLY AND TEMPORARILY AFFECTED AREA

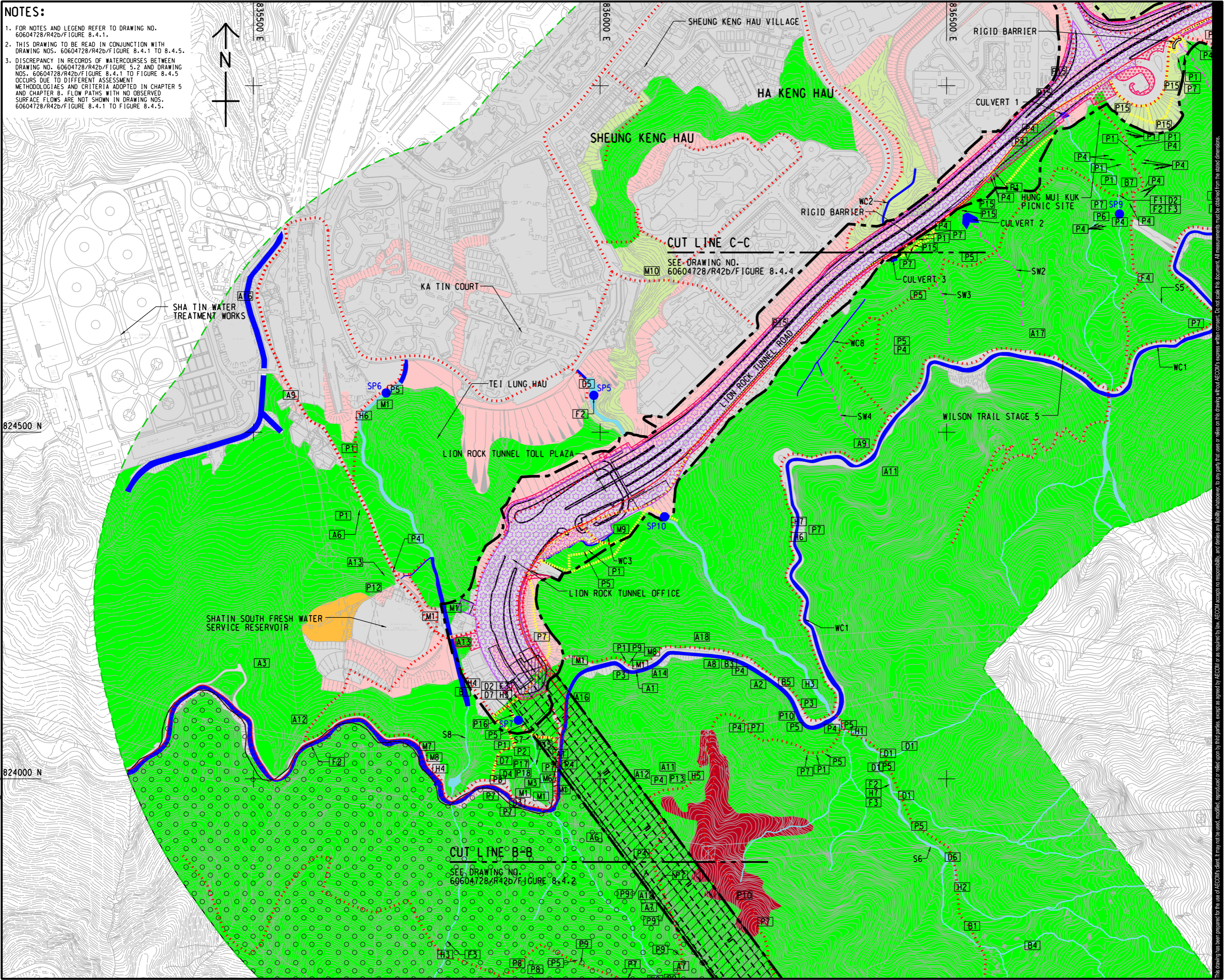
SHEET 2 OF 5

SHEET NUMBER

60604728/R42b/FIGURE 8.4.2

This drawing has been prepared for the use of AECOM's client. It may not be used, modified, reproduced or relied upon by third parties, except as agreed by AECOM or as required by law. AECOM accepts no responsibility, and denies any liability, whatsoever, to any party, that uses or relies on this drawing without AECOM's express written consent. All measurements must be obtained from the stated dimensions.

ISO A1 594mm x 841mm
 Approved:
 Checked:
 Designer:
 Project Management Initials:
 2022/6/22
 PATH PROJECTS/60604728/DRAWING/REPORT/42b/R42b_743.dgn
 Plo File by: ZHLZ



NOTES:

- FOR NOTES AND LEGEND REFER TO DRAWING NO. 60604728/R42b/FIGURE 8.4.1.
- THIS DRAWING TO BE READ IN CONJUNCTION WITH DRAWING NOS. 60604728/R42b/FIGURE 8.4.1 TO 8.4.5.
- DISCREPANCY IN RECORDS OF WATERCOURSES BETWEEN DRAWING NO. 60604728/R42b/FIGURE 5.2 AND DRAWING NOS. 60604728/R42b/FIGURE 8.4.1 TO FIGURE 8.4.5 OCCURS DUE TO DIFFERENT ASSESSMENT METHODOLOGIES AND CRITERIA ADOPTED IN CHAPTER 5 AND CHAPTER 8. FLOW PATHS WITH NO OBSERVED SURFACE FLOWS ARE NOT SHOWN IN DRAWING NOS. 60604728/R42b/FIGURE 8.4.1 TO FIGURE 8.4.5.

AECOM

PROJECT
IMPROVEMENT OF LION ROCK TUNNEL - INVESTIGATION

CLIENT
**路政署
 HIGHWAYS
 DEPARTMENT**

CONSULTANT
 AECOM Asia Company Ltd.
 www.aecom.com

SUB-CONSULTANTS
 分列工程顧問公司

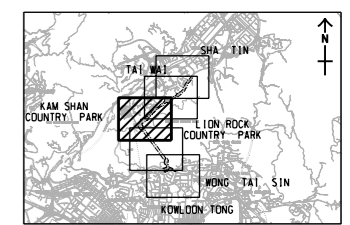
ISSUE/REVISION

NO.	DATE	DESCRIPTION	CHK.

STATUS
 10/21

SCALE 1:5000
DIMENSION UNIT METRES

KEY PLAN A3 1:250000



PROJECT NO. 60604728
AGREEMENT NO. CE 48/2018(HY)

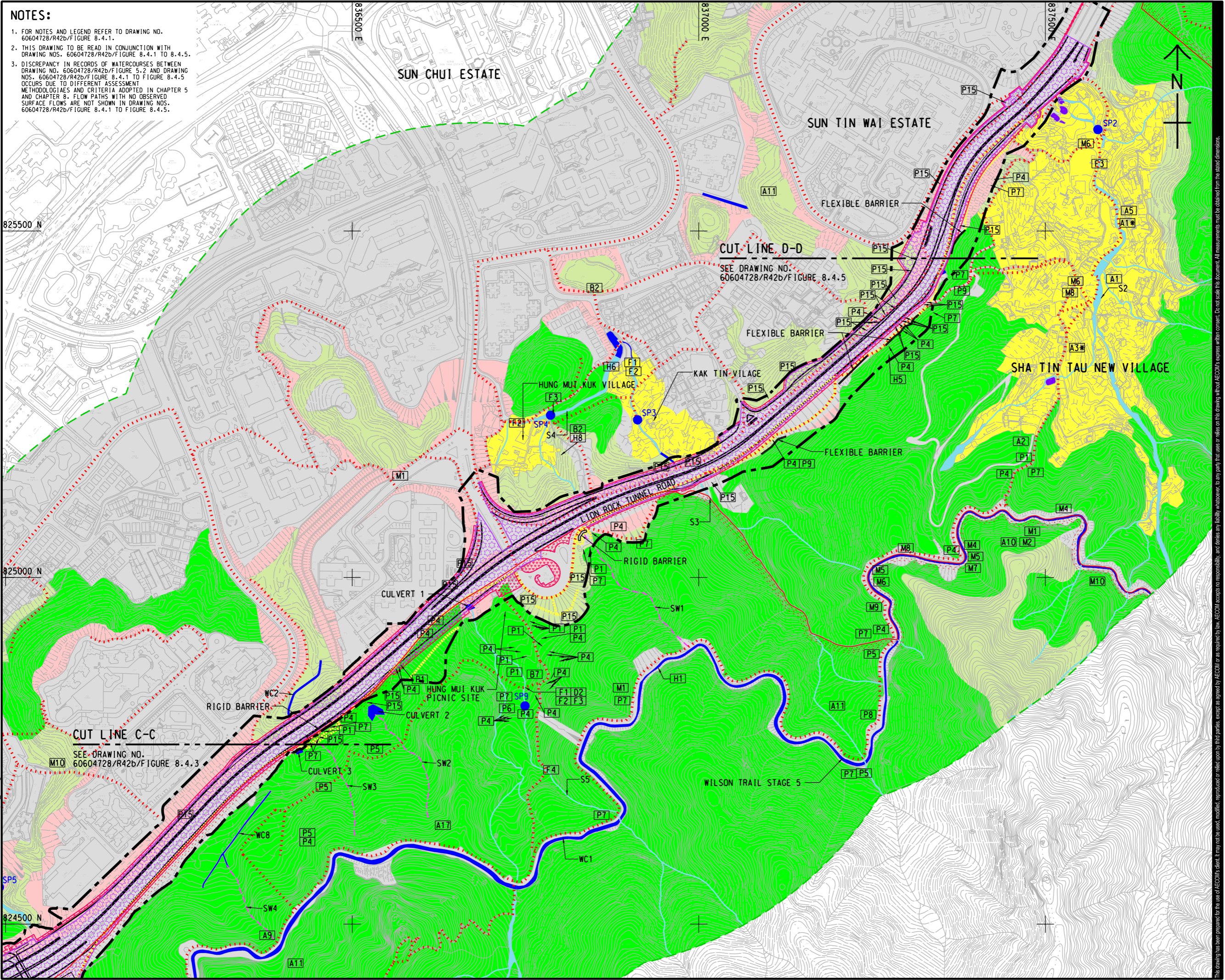
SHEET TITLE
 PERMANENTLY AND TEMPORARILY AFFECTED AREA

SHEET NUMBER
 60604728/R42b/FIGURE 8.4.3

ISO A1 594mm x 841mm
 Approved:
 Checked:
 Designer:
 Project Management Initials:
 2022/6/22
 P:\PROJECTS\60604728\DRAWING\REPORT\60604728_744.dgn
 Plot File by: ZHILZ

NOTES:

- FOR NOTES AND LEGEND REFER TO DRAWING NO. 60604728/R42b/FIGURE 8.4.1.
- THIS DRAWING TO BE READ IN CONJUNCTION WITH DRAWING NOS. 60604728/R42b/FIGURE 8.4.1 TO 8.4.5.
- DISCREPANCY IN RECORDS OF WATERCOURSES BETWEEN DRAWING NO. 60604728/R42b/FIGURE 8.4.1 TO FIGURE 8.4.5 OCCURS DUE TO DIFFERENT ASSESSMENT METHODOLOGIES AND CRITERIA ADOPTED IN CHAPTER 5 AND CHAPTER 8. FLOW PATHS WITH NO OBSERVED SURFACE FLOWS ARE NOT SHOWN IN DRAWING NOS. 60604728/R42b/FIGURE 8.4.1 TO FIGURE 8.4.5.



PROJECT
 IMPROVEMENT OF LION ROCK TUNNEL - INVESTIGATION

CLIENT
 HIGHWAYS DEPARTMENT

CONSULTANT
 AECOM Asia Company Ltd.
 www.aecom.com

SUB-CONSULTANTS

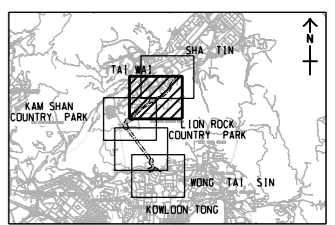
ISSUE/REVISION

IR	DATE	DESCRIPTION	CHK.

STATUS

SCALE **DIMENSION UNIT**
 A3 1 : 5000 METRES

KEY PLAN A3 1 : 250000

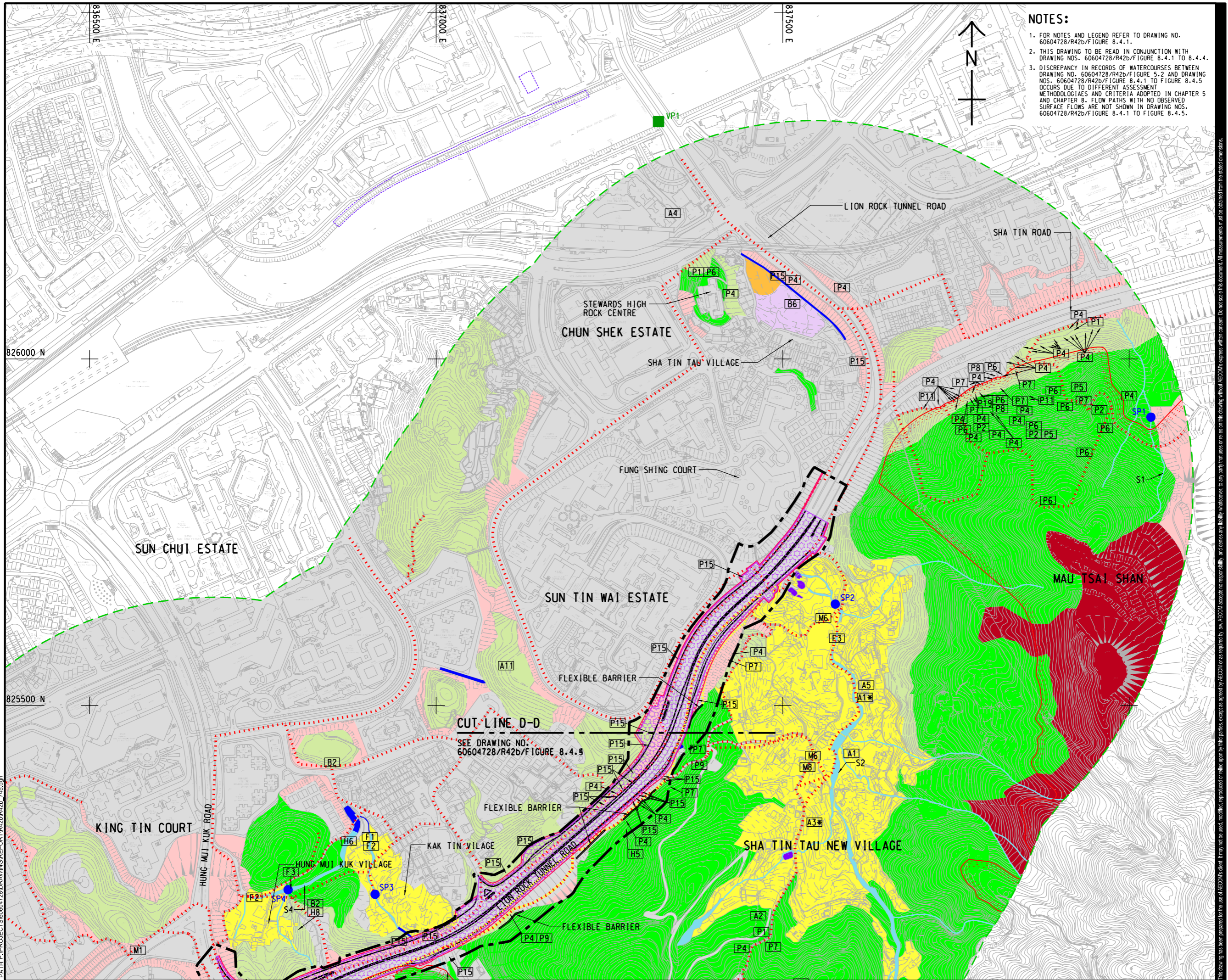


PROJECT NO. **AGREEMENT NO.**
 60604728 CE 48/2018(HY)

SHEET TITLE
 PERMANENTLY AND TEMPORARILY AFFECTED AREA

SHEET NUMBER
 60604728/R42b/FIGURE 8.4.4

This drawing has been prepared for the use of AECOM's client. It may not be used, modified, reproduced or relied upon by third parties, except as agreed by AECOM or as required by law. AECOM accepts no responsibility, and denies any liability whatsoever, for any part, that less or relies on this drawing without AECOM's express written consent. All measurements must be obtained from the stated dimensions.



NOTES:

1. FOR NOTES AND LEGEND REFER TO DRAWING NO. 60604728/R42b/Figure 8.4.1.
2. THIS DRAWING TO BE READ IN CONJUNCTION WITH DRAWING NOS. 60604728/R42b/Figure 8.4.1 TO 8.4.4.
3. DISCREPANCY IN RECORDS OF WATERCOURSES BETWEEN DRAWING NO. 60604728/R42b/Figure 8.4.1 TO Figure 8.4.5 OCCURS DUE TO DIFFERENT ASSESSMENT METHODOLOGIES AND CRITERIA ADOPTED IN CHAPTER 5 AND CHAPTER 8. FLOW PATHS WITH NO OBSERVED SURFACE FLOWS ARE NOT SHOWN IN DRAWING NOS. 60604728/R42b/Figure 8.4.1 TO Figure 8.4.5.



PROJECT

IMPROVEMENT OF LION ROCK TUNNEL - INVESTIGATION

CLIENT



CONSULTANT

AECOM Asia Company Ltd.
 www.aecom.com

SUB-CONSULTANTS

分列工程顧問公司

ISSUE/REVISION

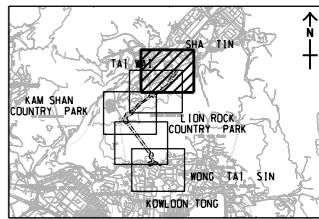
IR	DATE	DESCRIPTION	CHK.

STATUS

SCALE **DIMENSION UNIT**

A3 1 : 5000 METRES

KEY PLAN A3 1 : 250000



PROJECT NO. **AGREEMENT NO.**

60604728 CE 48/2018(HY)

SHEET TITLE

PERMANENTLY AND TEMPORARILY AFFECTED AREA

SHEET NUMBER

60604728/R42b/FIGURE 8.4.5

This drawing has been prepared for the use of AECOM's client. It may not be used, modified, reproduced or relied upon by third parties, except as agreed by AECOM or as required by law. AECOM accepts no responsibility, and disclaims any liability, whatsoever, to any party, that uses or relies on this drawing without AECOM's express written consent. All measurements must be obtained from the stated dimensions.