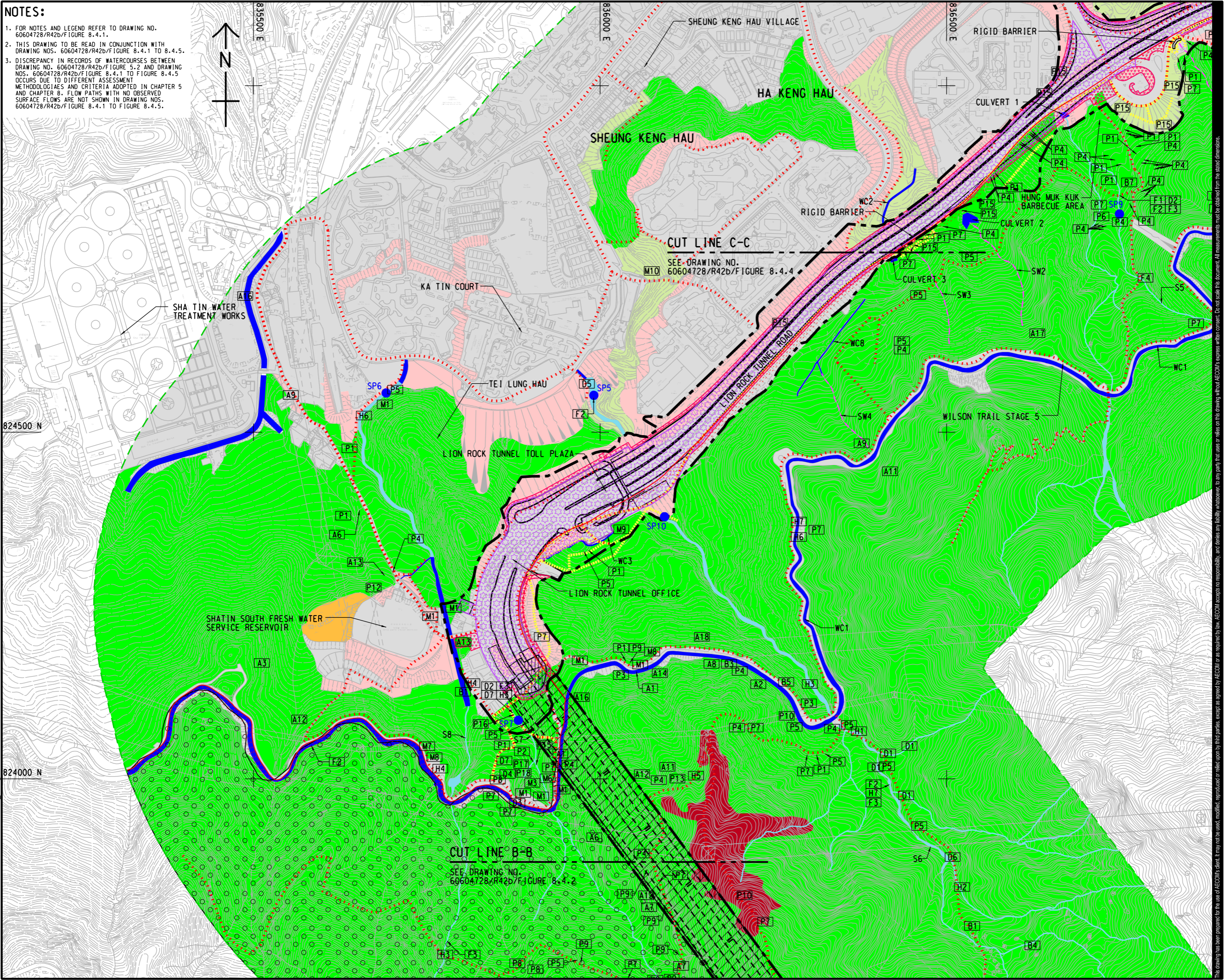


ISO A1 594mm x 841mm  
 Approved:  
 Checked:  
 Designer:  
 Project Management Initials:  
 2022/7/19  
 PATH PROJECTS/60604728/DRAWING/REPORT/42b/42b\_743.dgn  
 Plo File by: ZHLZ



**AECOM**

PROJECT  
**IMPROVEMENT OF LION ROCK TUNNEL - INVESTIGATION**

CLIENT  
**路政署  
 HIGHWAYS DEPARTMENT**

CONSULTANT  
 AECOM Asia Company Ltd.  
 www.aecom.com

SUB-CONSULTANTS  
 分列工程顧問公司

**ISSUE/REVISION**

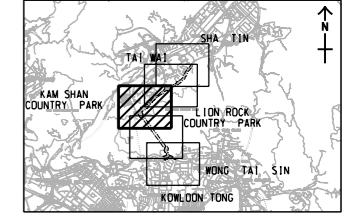
NO.	DATE	DESCRIPTION	CHK.

**STATUS**  
 10/21

**SCALE**  
 1:5000

**DIMENSION UNIT**  
 METRES

**KEY PLAN**  
 A3 1:250000



**PROJECT NO.**  
 60604728

**AGREEMENT NO.**  
 CE 48/2018(HY)

**SHEET TITLE**  
 PERMANENTLY AND TEMPORARILY AFFECTED AREA

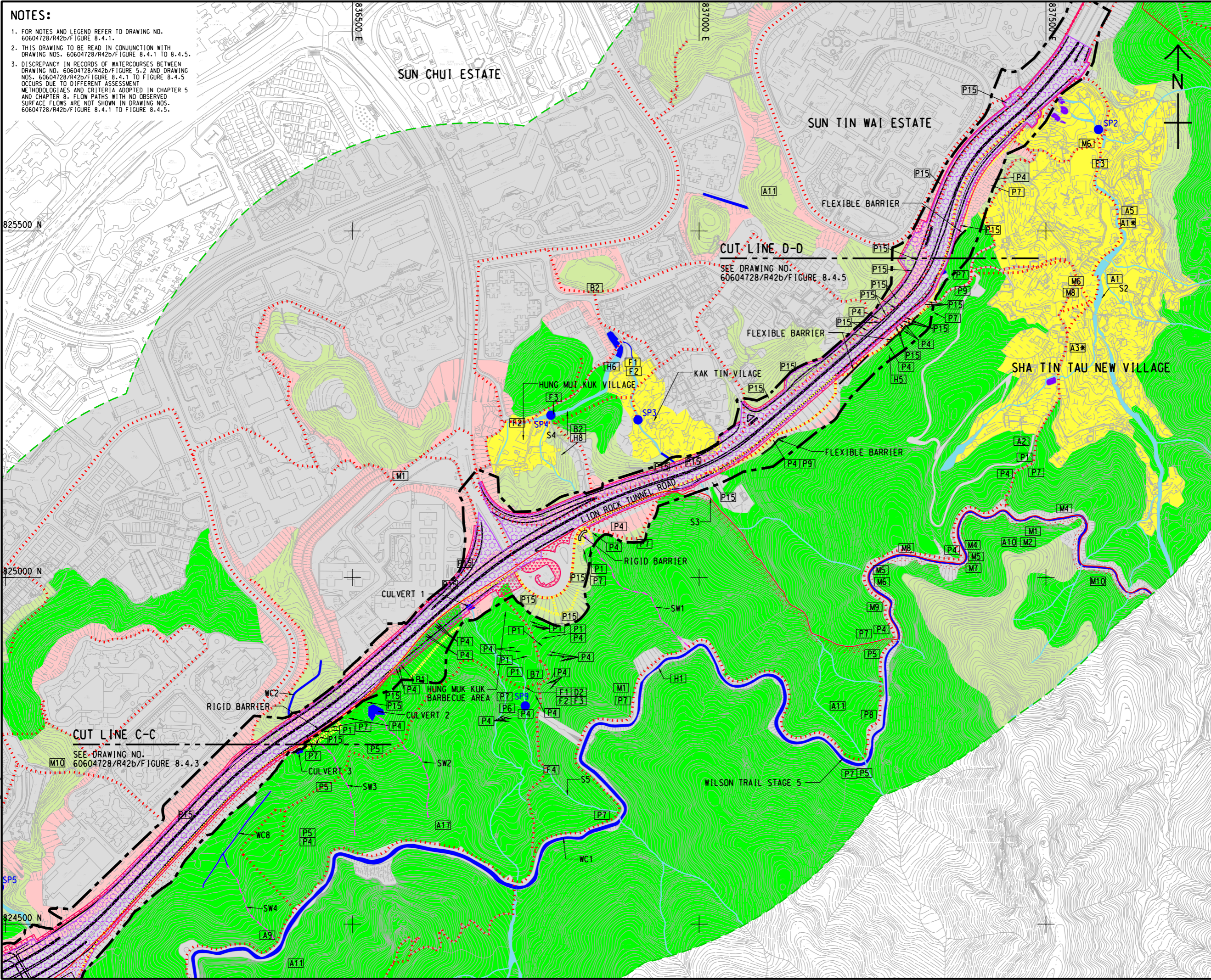
**SHEET NUMBER**  
 60604728/R42b/FIGURE 8.4.3

SHEET 3 OF 5

ISO A1 594mm x 841mm  
 Approved:  
 Checked:  
 Designer:  
 Project Management Initials:  
 2022/7/27  
 PATH PROJECTS/60604728/DRAWINGREPORT/42b/42b\_744.dgn  
 Plot File by: ZHLZ

**NOTES:**

- FOR NOTES AND LEGEND REFER TO DRAWING NO. 60604728/R42b/FIGURE 8.4.1.
- THIS DRAWING TO BE READ IN CONJUNCTION WITH DRAWING NOS. 60604728/R42b/FIGURE 8.4.1 TO 8.4.5.
- DISCREPANCY IN RECORDS OF WATERCOURSES BETWEEN DRAWING NO. 60604728/R42b/FIGURE 8.4.1 TO FIGURE 8.4.5 OCCURS DUE TO DIFFERENT ASSESSMENT METHODOLOGIES AND CRITERIA ADOPTED IN CHAPTER 5 AND CHAPTER 8. FLOW PATHS WITH NO OBSERVED SURFACE FLOWS ARE NOT SHOWN IN DRAWING NOS. 60604728/R42b/FIGURE 8.4.1 TO FIGURE 8.4.5.



**AECOM**

PROJECT  
 IMPROVEMENT OF LION ROCK TUNNEL - INVESTIGATION

CLIENT  
 路政署  
**HIGHWAYS DEPARTMENT**

CONSULTANT  
 AECOM Asia Company Ltd.  
 www.aecom.com

SUB-CONSULTANTS  
 分判工程顧問公司

**ISSUE/REVISION**

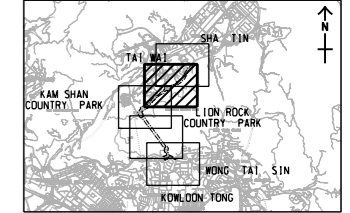
IR	DATE	DESCRIPTION	CHK.

**STATUS**

**SCALE**      **DIMENSION UNIT**

A3 1 : 5000      METRES

**KEY PLAN**      A3 1 : 250000



**PROJECT NO.**      **AGREEMENT NO.**

60604728      CE 48/2018(HY)

**SHEET TITLE**

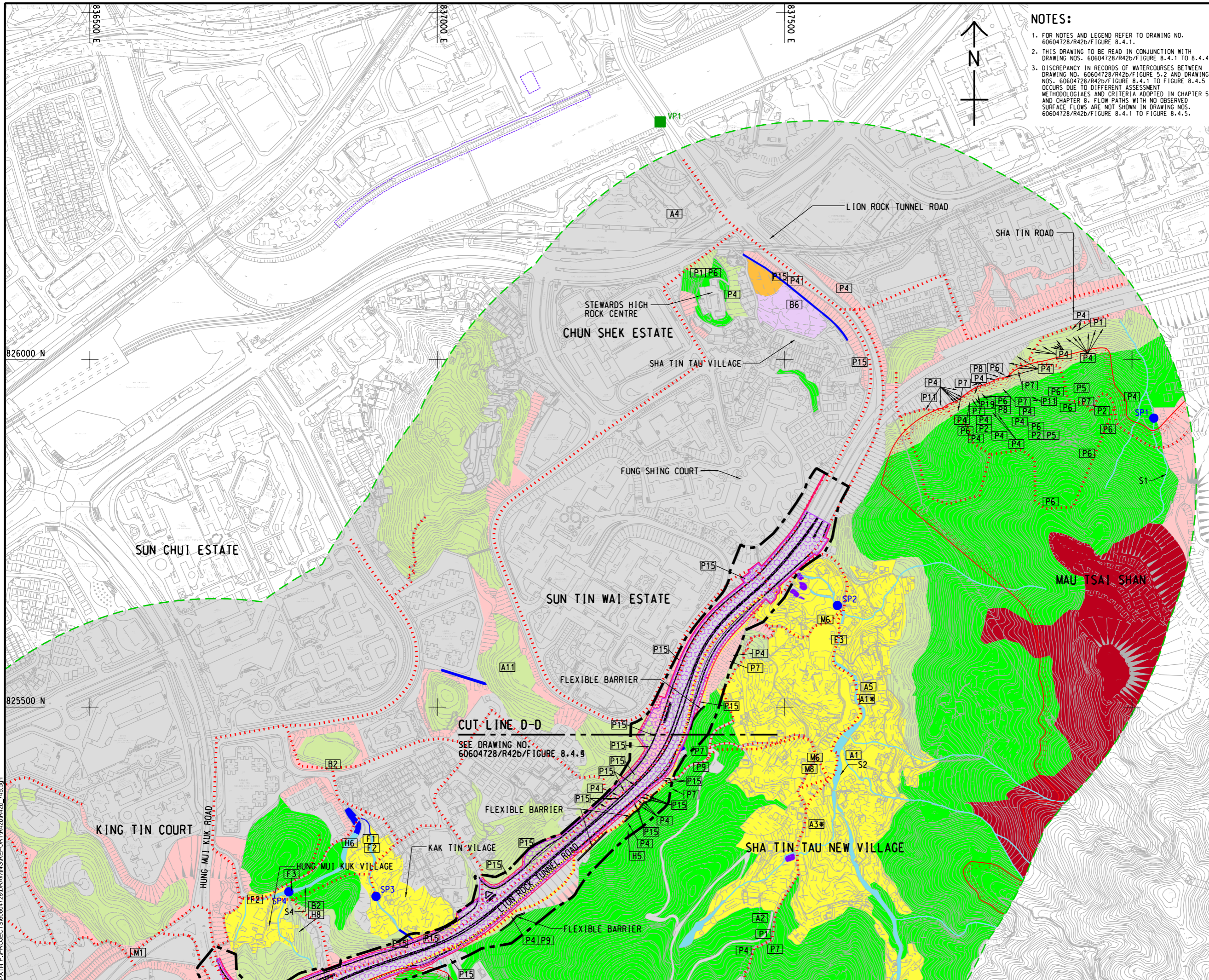
PERMANENTLY AND TEMPORARILY AFFECTED AREA

SHEET 4 OF 5

**SHEET NUMBER**

60604728/R42b/FIGURE 8.4.4

This drawing has been prepared for the use of AECOM's client. It may not be used, modified, reproduced or relied upon by third parties, except as agreed by AECOM or as required by law. AECOM accepts no responsibility, and denies any liability whatsoever, for any part, that less or relies on this drawing without AECOM's express written consent. All measurements must be obtained from the stated dimensions.



**NOTES:**

1. FOR NOTES AND LEGEND REFER TO DRAWING NO. 60604728/R42b/FIGURE 8.4.1.
2. THIS DRAWING TO BE READ IN CONJUNCTION WITH DRAWING NOS. 60604728/R42b/FIGURE 8.4.1 TO 8.4.4.
3. DISCREPANCY IN RECORDS OF WATERCOURSES BETWEEN DRAWING NO. 60604728/R42b/FIGURE 8.4.1 TO FIGURE 8.4.5 OCCURS DUE TO DIFFERENT ASSESSMENT METHODOLOGIES AND CRITERIA ADOPTED IN CHAPTER 5 AND CHAPTER 8. FLOW PATHS WITH NO OBSERVED SURFACE FLOWS ARE NOT SHOWN IN DRAWING NOS. 60604728/R42b/FIGURE 8.4.1 TO FIGURE 8.4.5.

**ISSUE/REVISION**

NO.	DATE	DESCRIPTION	CHK.

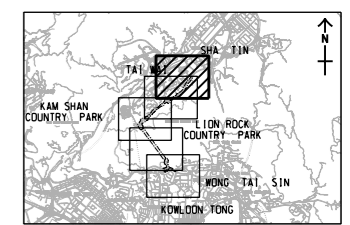
**STATUS**

NO.	DATE	DESCRIPTION	CHK.

**SCALE**      **DIMENSION UNIT**

SCALE	DIMENSION UNIT
A3 1:5000	METRES

**KEY PLAN**      A3 1:250000



**PROJECT NO.**      **AGREEMENT NO.**

60604728	CE 48/2018(HY)
----------	----------------

**SHEET TITLE**  
 PERMANENTLY AND TEMPORARILY AFFECTED AREA

This drawing has been prepared for the use of AECOM's client. It may not be used, modified, reproduced or relied upon by third parties, except as agreed by AECOM or as required by law. AECOM accepts no responsibility, and disclaims any liability, whatsoever, to any party, that uses or relies on this drawing without AECOM's express written consent. All measurements must be obtained from the stated dimensions.