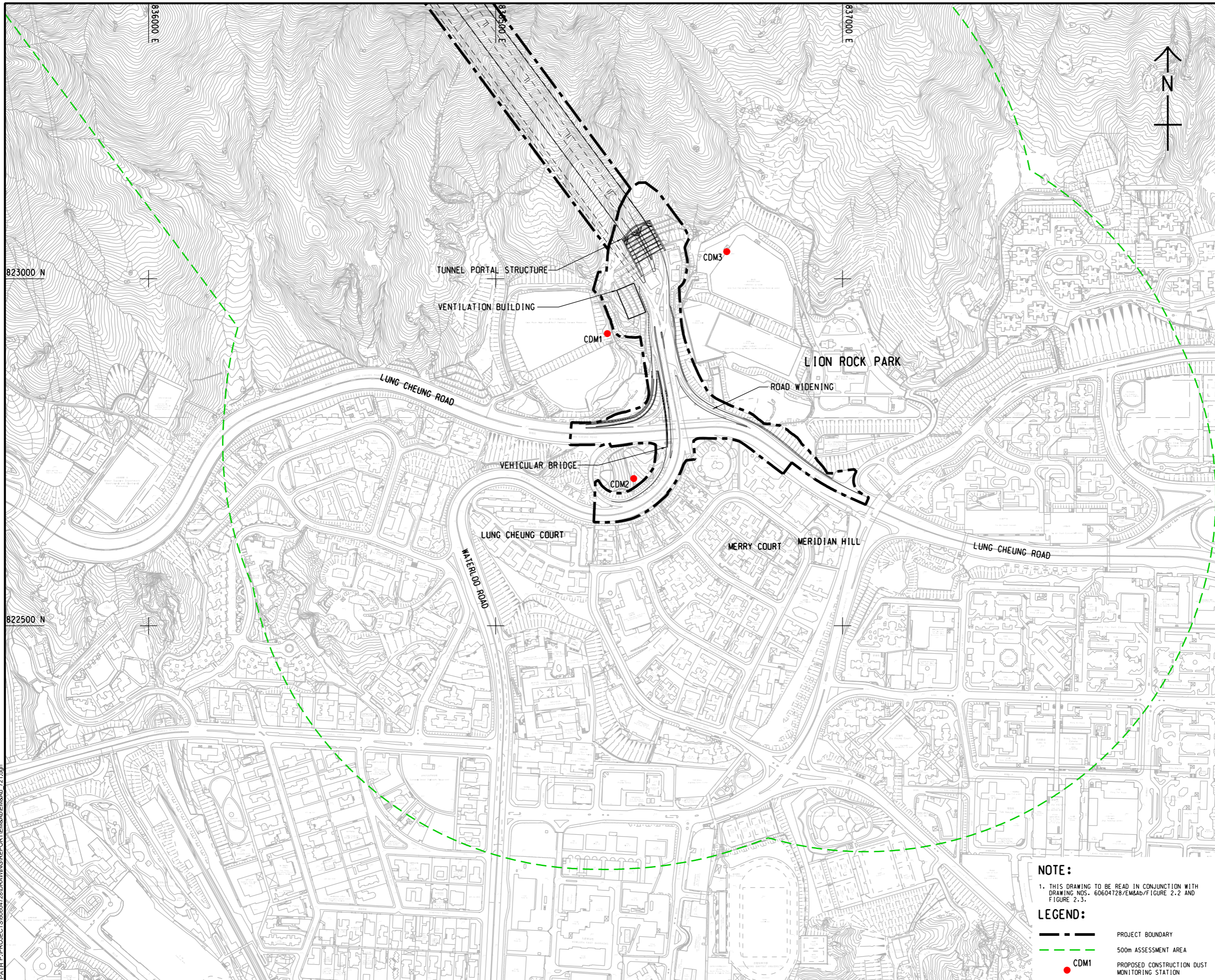


ISO A1 594mm x 841mm  
 Approved:  
 Checked:  
 Designer:  
 Project Management Initials:  
 2022/6/9  
 ZHILZ  
 PATH PROJECTS\60604728\DRAWING\REPORT\EM&Ab\7-1.dgn



**PROJECT**  
 項目  
**IMPROVEMENT OF LION ROCK TUNNEL - INVESTIGATION**

**CLIENT**  
 業主  
 **HIGHWAYS DEPARTMENT**

**CONSULTANT**  
 顧問公司  
 AECOM Asia Company Ltd.  
 www.aecom.com

**SUB-CONSULTANTS**  
 分判工程師/顧問公司

**ISSUE/REVISION**  
 修訂

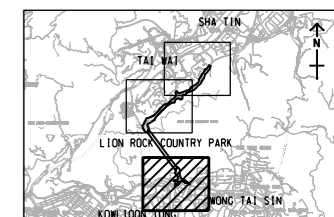
IR	DATE	DESCRIPTION	CHK.

**STATUS**  
 狀態

**SCALE**                      **DIMENSION UNIT**  
 比例尺                                      單位

A3 1 : 5000                      METRES

**KEY PLAN**    A3 1 : 200000



**PROJECT NO.**                      **AGREEMENT NO.**  
 項目編號                                      協議編號

60604728                                      CE 48/2018(HY)

**SHEET TITLE**  
 圖紙名稱

**PROPOSED CONSTRUCTION DUST MONITORING STATIONS IN KOWLOON**




**SHEET NUMBER**  
 圖紙編號

60604728/EM&Ab/FIGURE 2.1

SHEET 1 OF 3

**NOTE:**  
 1. THIS DRAWING TO BE READ IN CONJUNCTION WITH DRAWING NOS. 60604728/EM&Ab/FIGURE 2.2 AND FIGURE 2.3.

**LEGEND:**

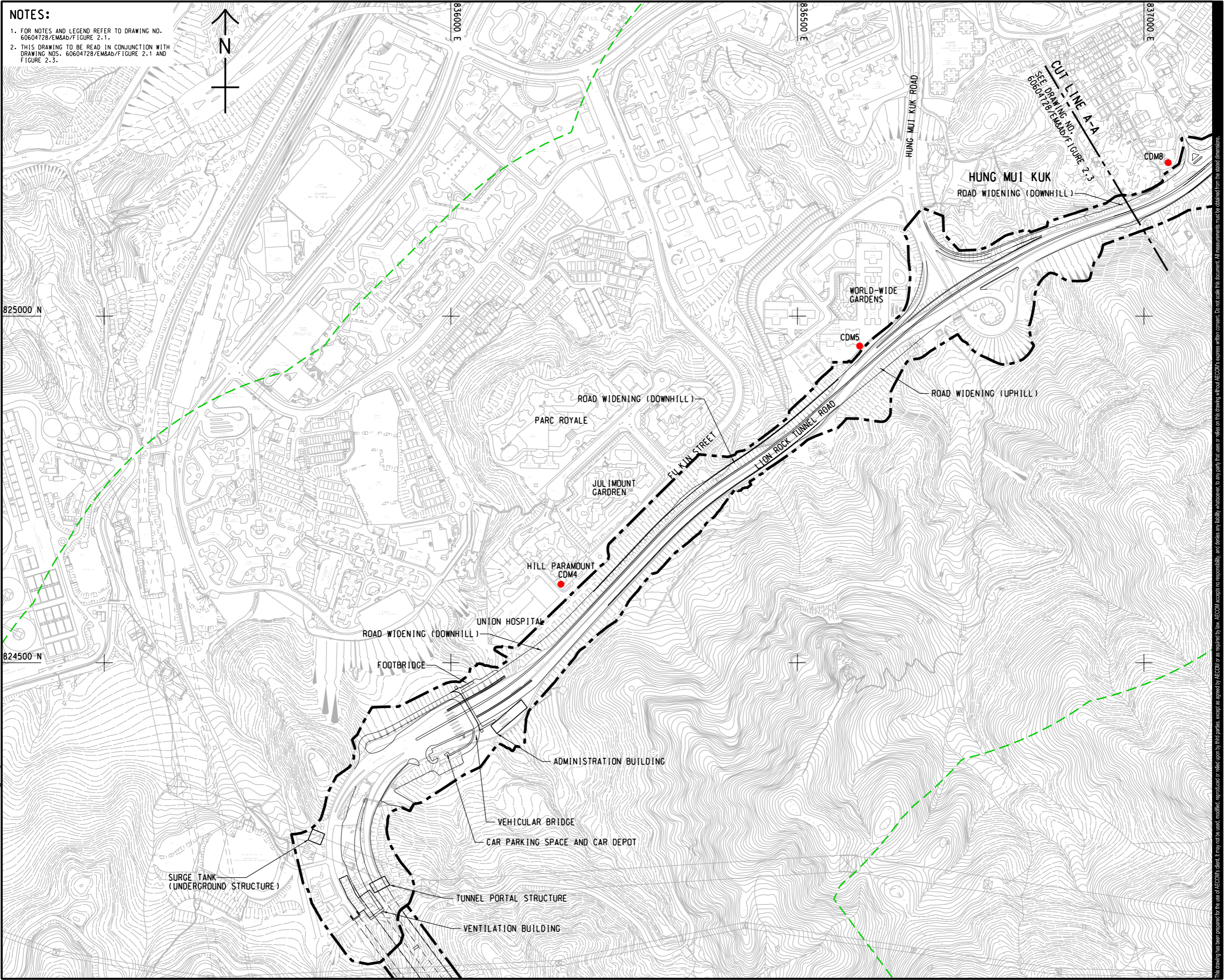
-  PROJECT BOUNDARY
-  500m ASSESSMENT AREA
-  CDM1
-  PROPOSED CONSTRUCTION DUST MONITORING STATION

This drawing has been prepared for the use of AECOM's client. It may not be used, modified, reproduced or relied upon by third parties, except as agreed by AECOM or as required by law. AECOM accepts no responsibility, and disclaims any liability whatsoever, for any part, that less or relies on this drawing without AECOM's express written consent. All measurements must be obtained from the stated dimensions.

ISO A1 594mm x 841mm  
 Approved:  
 Checked:  
 Designer:  
 Project Management Initials:  
 2022/7/19  
 PATH PROJECTS\60604728\DRAWING\REPORT\EM&Ab\EM&Ab\_722.dgn  
 File by: ZHLZ

**NOTES:**

- FOR NOTES AND LEGEND REFER TO DRAWING NO. 60604728/EM&Ab/FIGURE 2.1.
- THIS DRAWING TO BE READ IN CONJUNCTION WITH DRAWING NOS. 60604728/EM&Ab/FIGURE 2.1 AND FIGURE 2.3.



**AECOM**

PROJECT  
 IMPROVEMENT OF LION ROCK TUNNEL - INVESTIGATION

CLIENT  
 路政署  
**HIGHWAYS DEPARTMENT**

CONSULTANT  
 AECOM Asia Company Ltd.  
 www.aecom.com

SUB-CONSULTANTS  
 分判工程師有限公司

**ISSUE/REVISION**

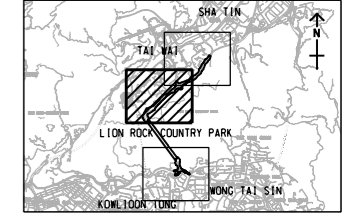
IR	DATE	DESCRIPTION	CHK.

**STATUS**

**SCALE**      **DIMENSION UNIT**

A3 1 : 5000      METRES

**KEY PLAN**      A3 1 : 20000



**PROJECT NO.**      **AGREEMENT NO.**

60604728      CE 48/2018(HY)

**SHEET TITLE**

PROPOSED CONSTRUCTION DUST MONITORING STATIONS IN SHATIN

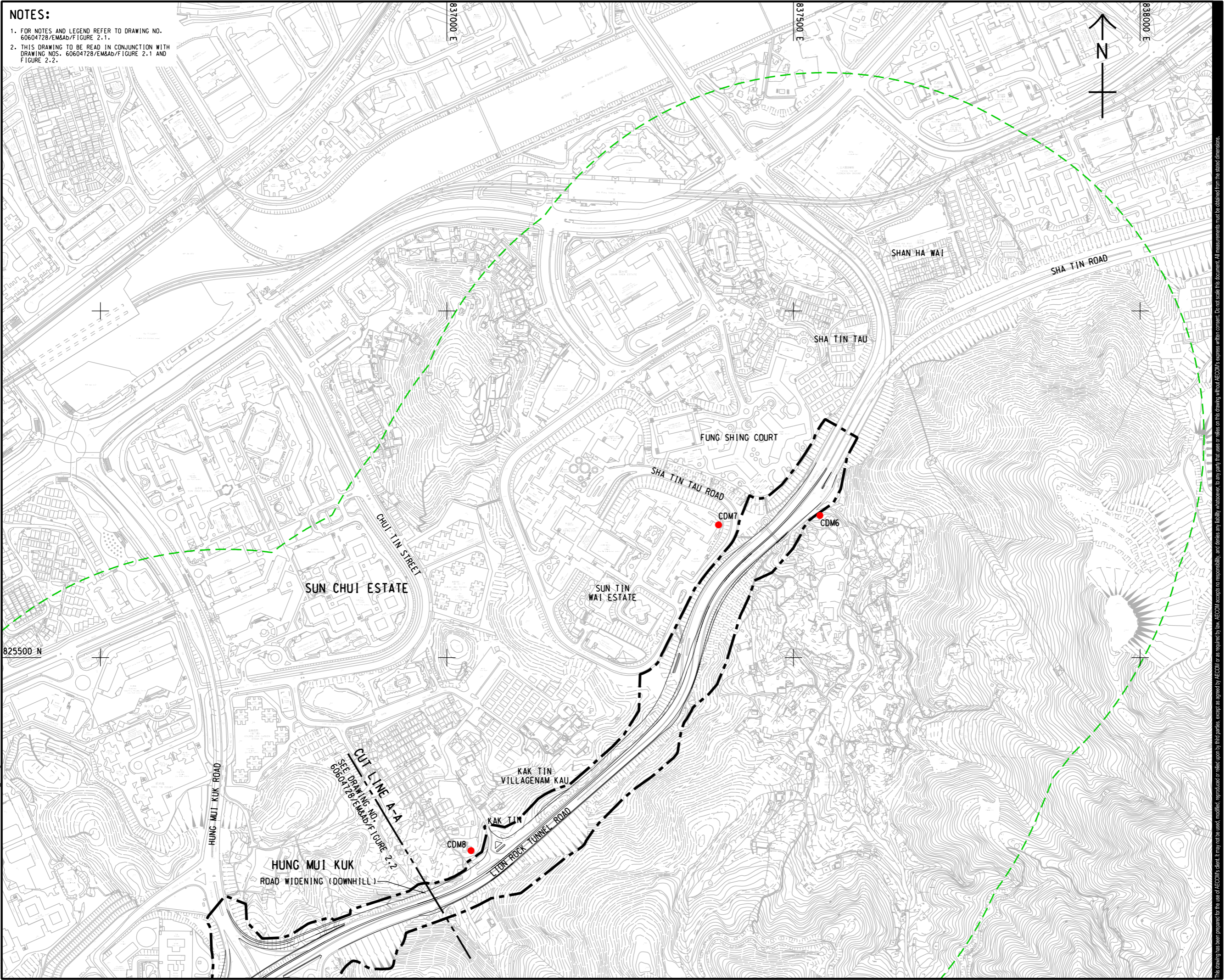
**SHEET NUMBER**

60604728/EM&Ab/FIGURE 2.2

SHEET 2 OF 3

This drawing has been prepared for the use of AECOM's client. It may not be used, modified, reproduced or relied upon by third parties, except as agreed by AECOM or as required by law. AECOM accepts no responsibility, and denies any liability, whatsoever, to any party, that uses or relies on this drawing without AECOM's express written consent. All measurements must be obtained from the stated dimensions.

ISO A1 594mm x 841mm  
 Approved:  
 Checked:  
 Designer:  
 Project Management Initials:



**NOTES:**  
 1. FOR NOTES AND LEGEND REFER TO DRAWING NO. 60604728/EM&A/Figure 2.1.  
 2. THIS DRAWING TO BE READ IN CONJUNCTION WITH DRAWING NOS. 60604728/EM&A/Figure 2.1 AND Figure 2.2.

**AECOM**

PROJECT  
 項目  
**IMPROVEMENT OF LION ROCK TUNNEL - INVESTIGATION**

CLIENT  
 業主  
**路政署  
 HIGHWAYS DEPARTMENT**

CONSULTANT  
 顧問公司  
 AECOM Asia Company Ltd.  
 www.aecom.com

SUB-CONSULTANTS  
 分判工程師/顧問公司

**ISSUE/REVISION**  
 修訂

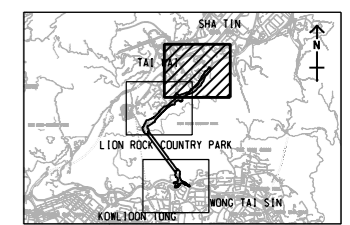
IR	DATE	DESCRIPTION	CHK.

**STATUS**  
 狀況

**SCALE**  
 比例尺  
 A3 1:5000

**DIMENSION UNIT**  
 尺寸單位  
 METRES

**KEY PLAN** A3 1:20000



**PROJECT NO.**  
 項目編號  
 60604728

**AGREEMENT NO.**  
 協議編號  
 CE 48/2018(HY)

**SHEET TITLE**  
 圖名  
 PROPOSED CONSTRUCTION DUST MONITORING STATIONS IN SHATIN

**SHEET NUMBER**  
 圖號  
 60604728/EM&A/Figure 2.3

SHEET 3 OF 3

This drawing has been prepared for the use of AECOM's client. It may not be used, modified, reproduced or relied upon by third parties, except as agreed by AECOM or as required by law. AECOM accepts no responsibility, and disclaims any liability whatsoever, to any party that uses or relies on this drawing without AECOM's express written consent. All measurements must be obtained from the stated dimensions.

Plot File by: ZHLZ  
 PATH P:\PROJECTS\60604728\DRAWING\REPORT\EM&A\EM&A\_723.dgn  
 2022/7/19