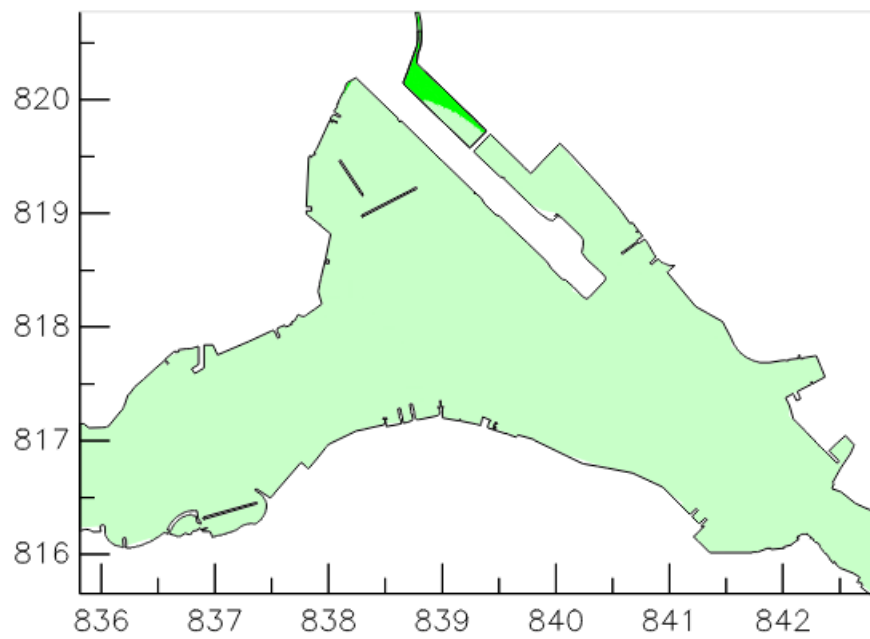
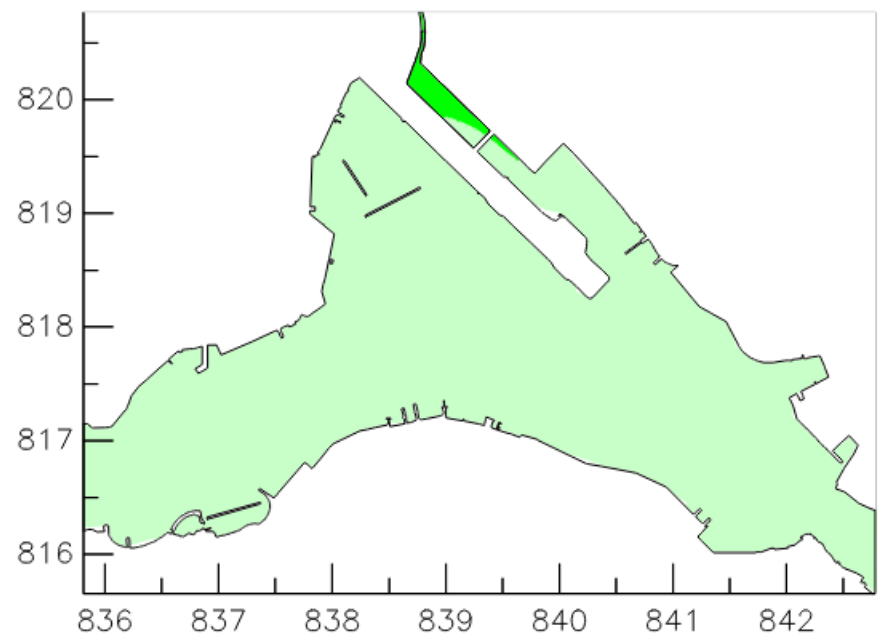


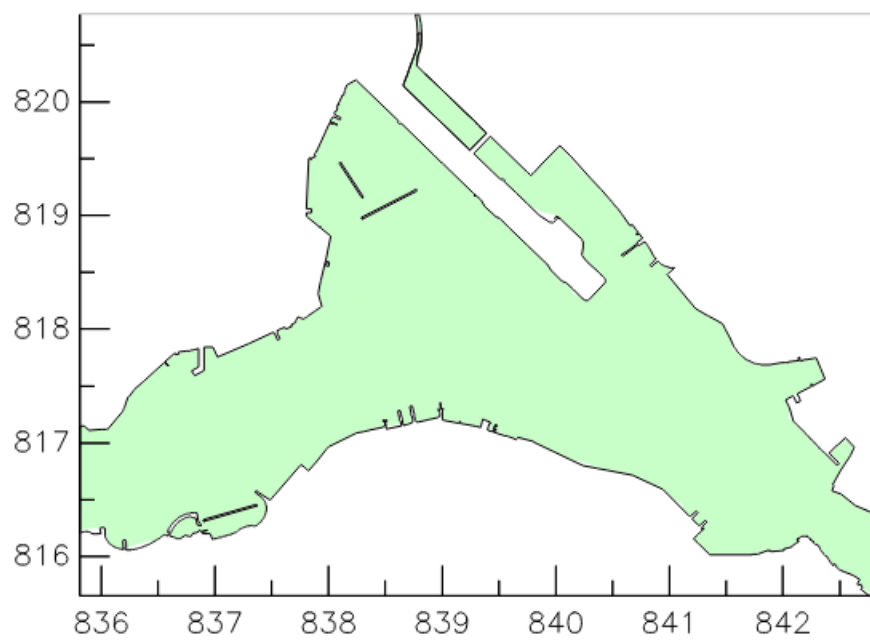
WQO Not Available



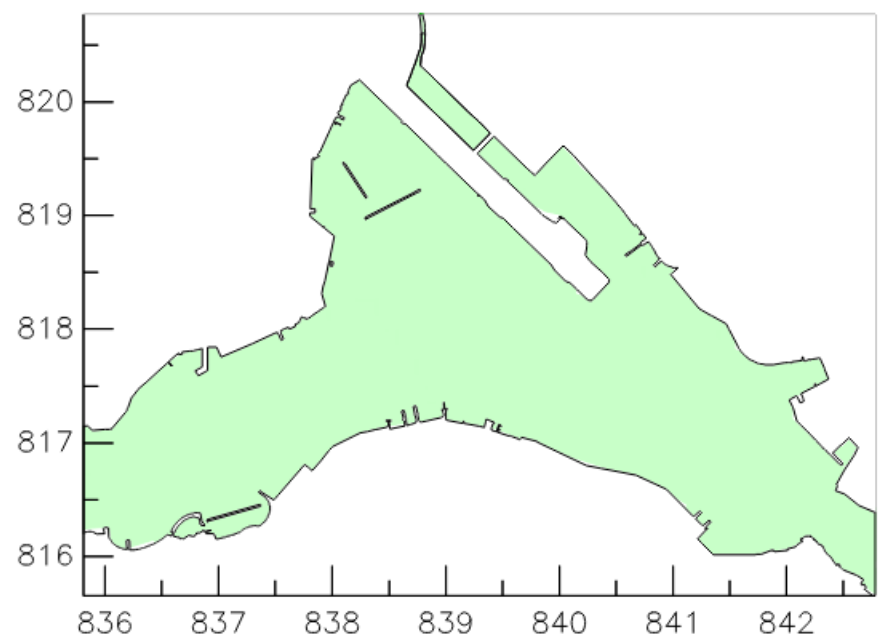
Scenario 1A
Baseline Scenario
(THEES based on discharge license standards)



Scenario 1B
"With Project" Scenario
(THEES based on discharge license standards)

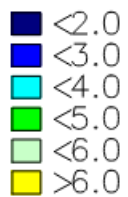


Scenario 2A
Baseline Scenario
(THEES based on 95%ile of actual measurements)



Scenario 2B
"With Project" Scenario
(THEES based on 95%ile of actual measurements)

mg/L



Annual Mean Depth-Averaged
Dissolved Oxygen Concentration in Victoria Harbour

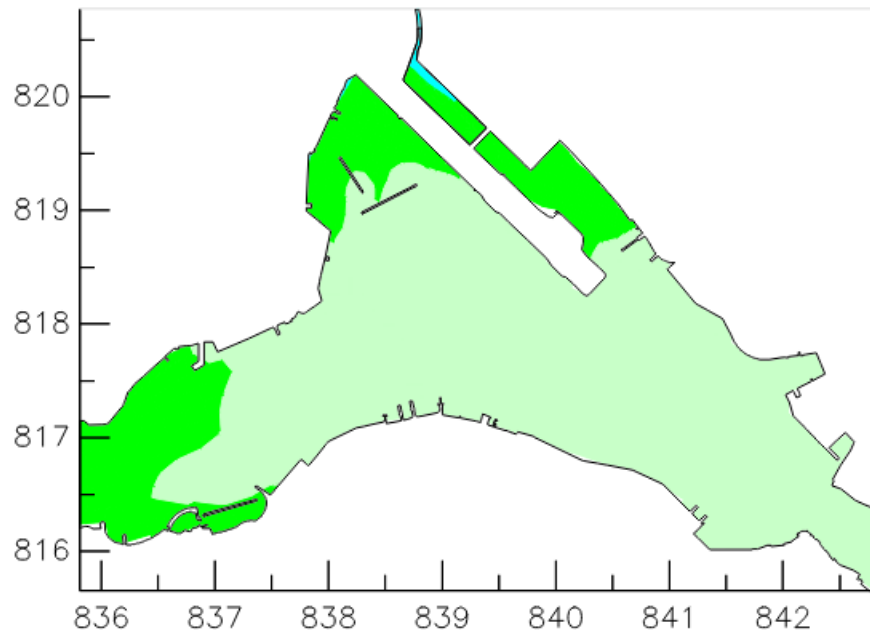
Annual

Figure 01

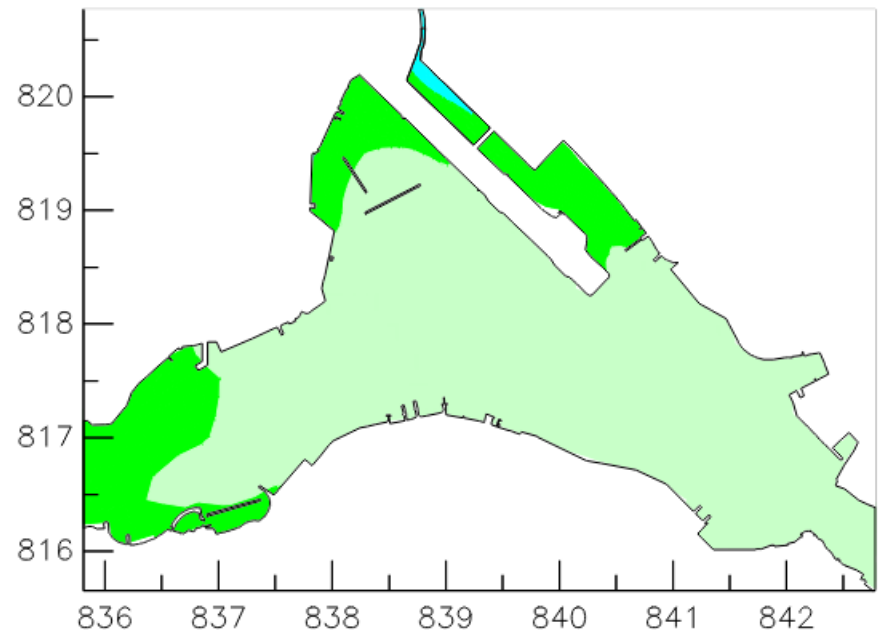
BINNIES

WQO: ≥ 4 mg/L

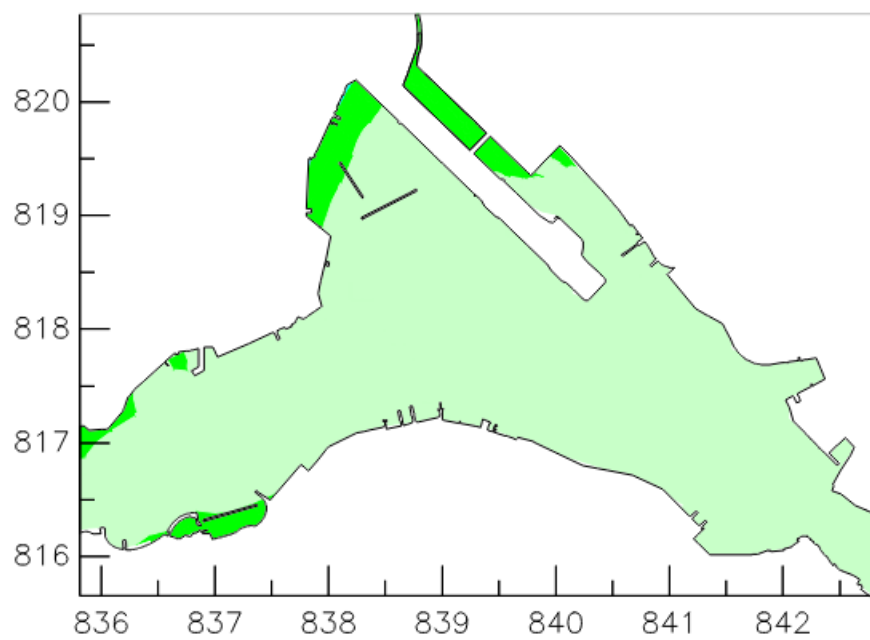
WQO Non-compliance



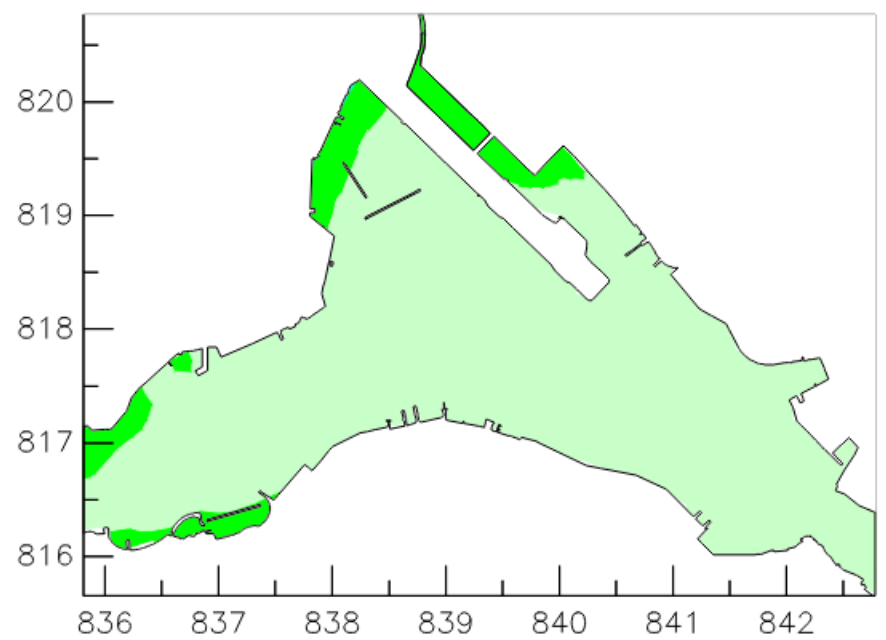
Scenario 1A
Baseline Scenario
(THEES based on discharge license standards)



Scenario 1B
"With Project" Scenario
(THEES based on discharge license standards)

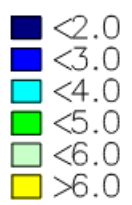


Scenario 2A
Baseline Scenario
(THEES based on 95%ile of actual measurements)



Scenario 2B
"With Project" Scenario
(THEES based on 95%ile of actual measurements)

mg/L



10 Percentile of Depth-Averaged
Dissolved Oxygen Concentration in Victoria Harbour

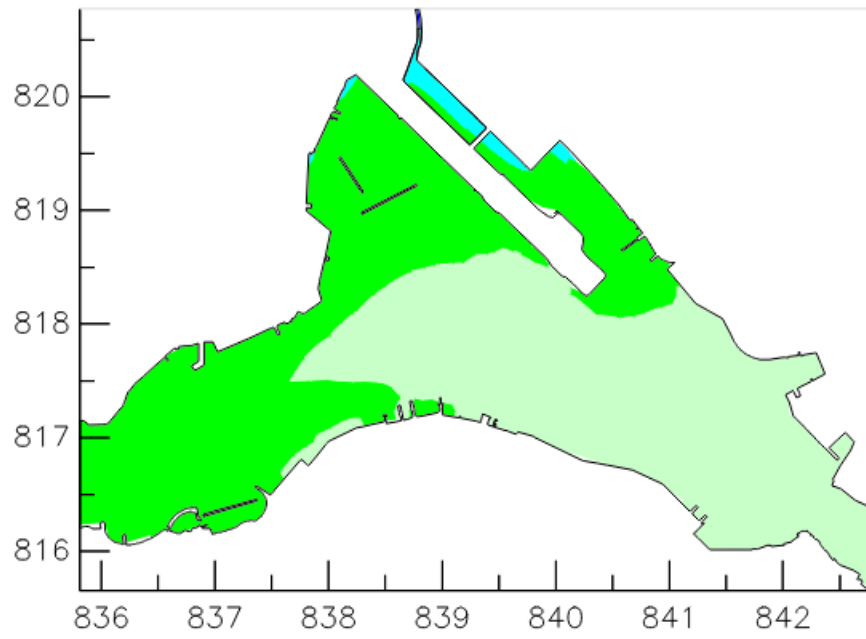
Annual

Figure 02

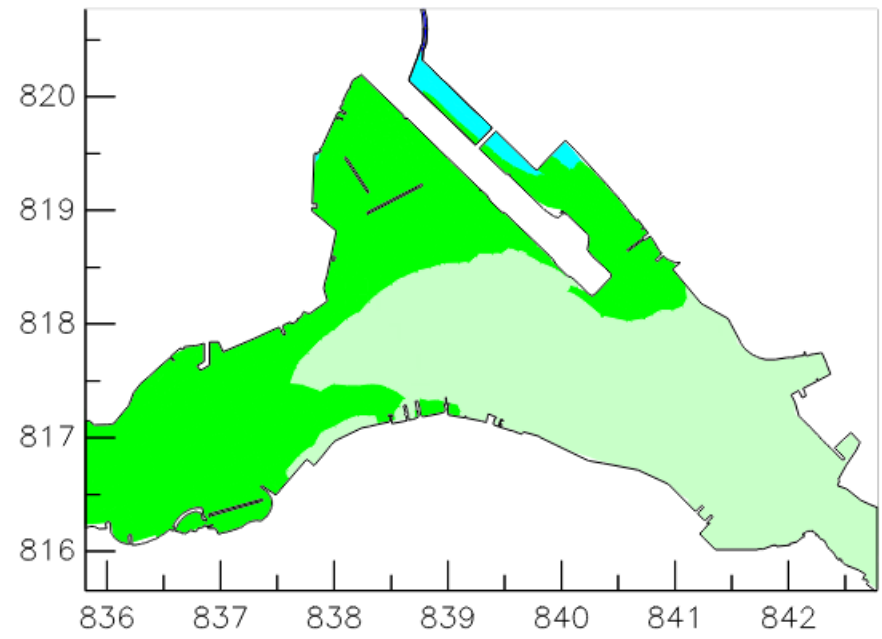
BINNIES

WQO: ≥ 2 mg/L

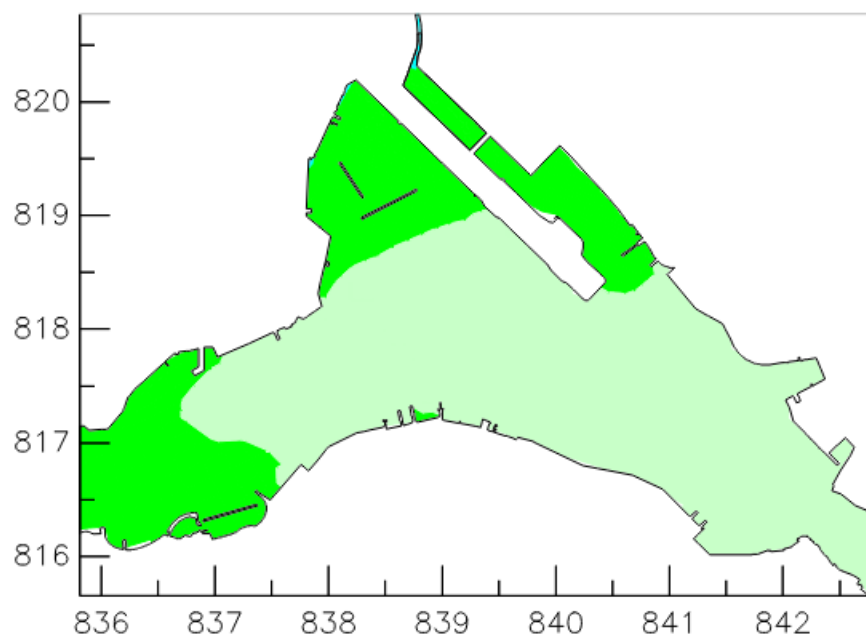
■ WQO Non-compliance



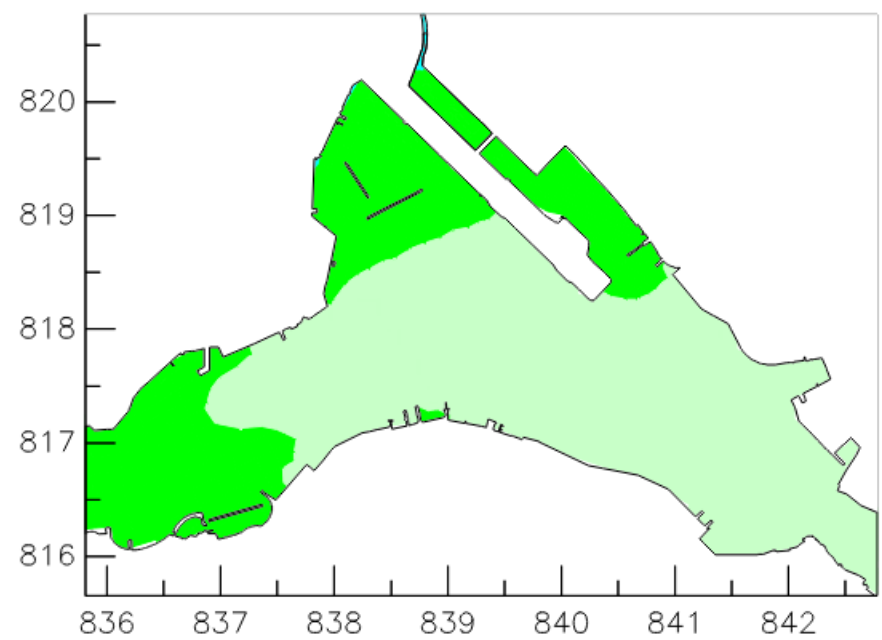
Scenario 1A
Baseline Scenario
(THEES based on discharge license standards)



Scenario 1B
"With Project" Scenario
(THEES based on discharge license standards)



Scenario 2A
Baseline Scenario
(THEES based on 95%ile of actual measurements)



Scenario 2B
"With Project" Scenario
(THEES based on 95%ile of actual measurements)

mg/L

- ≤ 2.0
- ≤ 3.0
- ≤ 4.0
- ≤ 5.0
- ≤ 6.0
- > 6.0

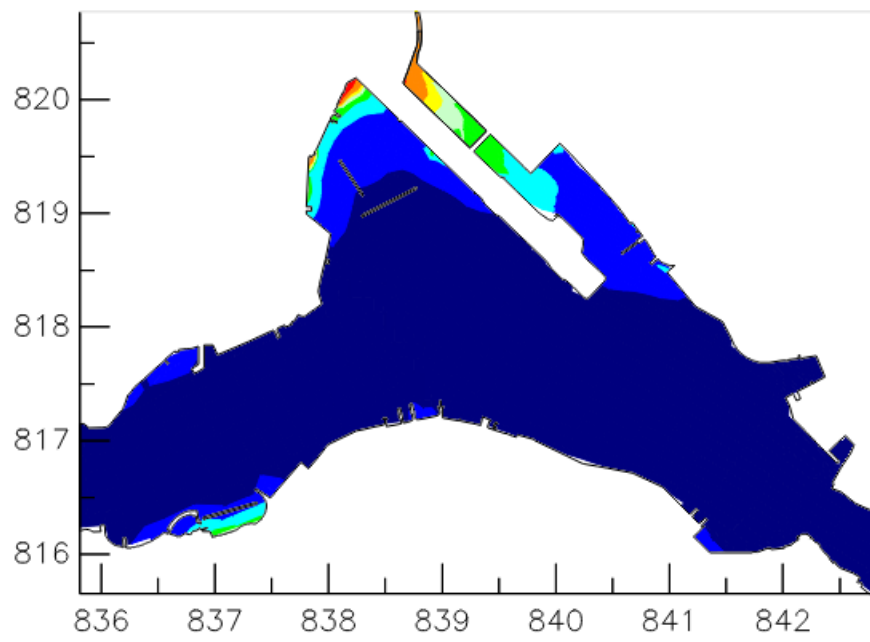
10 Percentile of Bottom
Dissolved Oxygen Concentration in Victoria Harbour

Annual

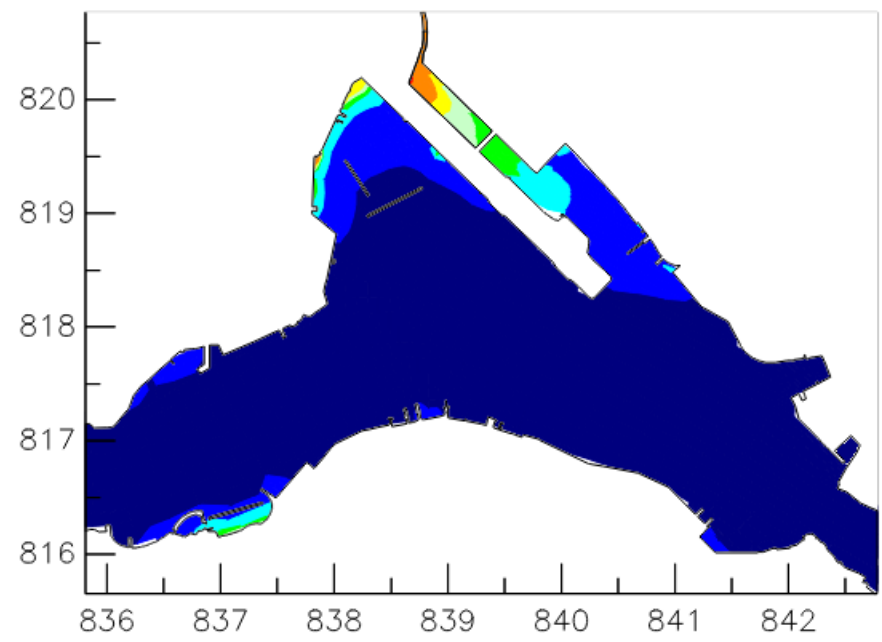
Figure 03

BINNIES

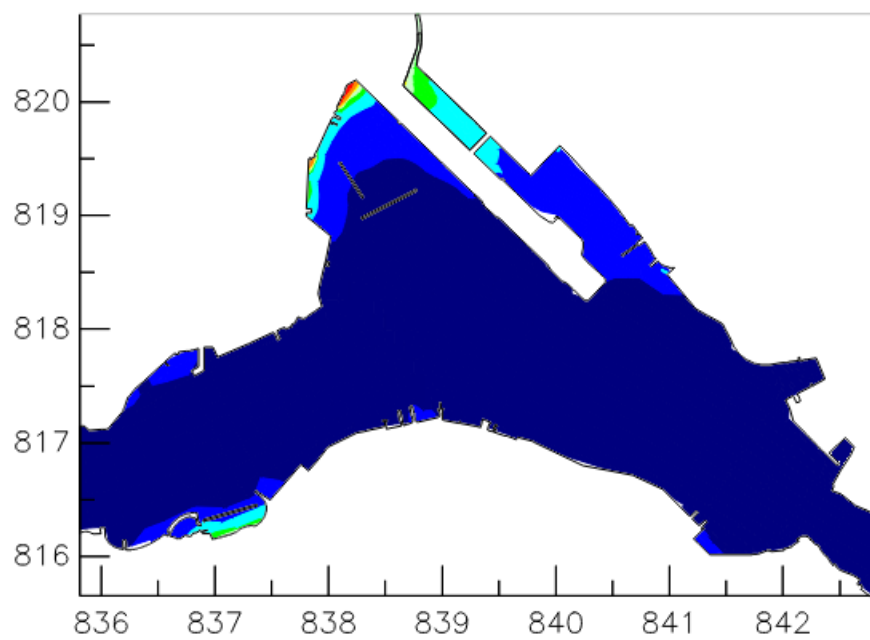
WQO Not Available



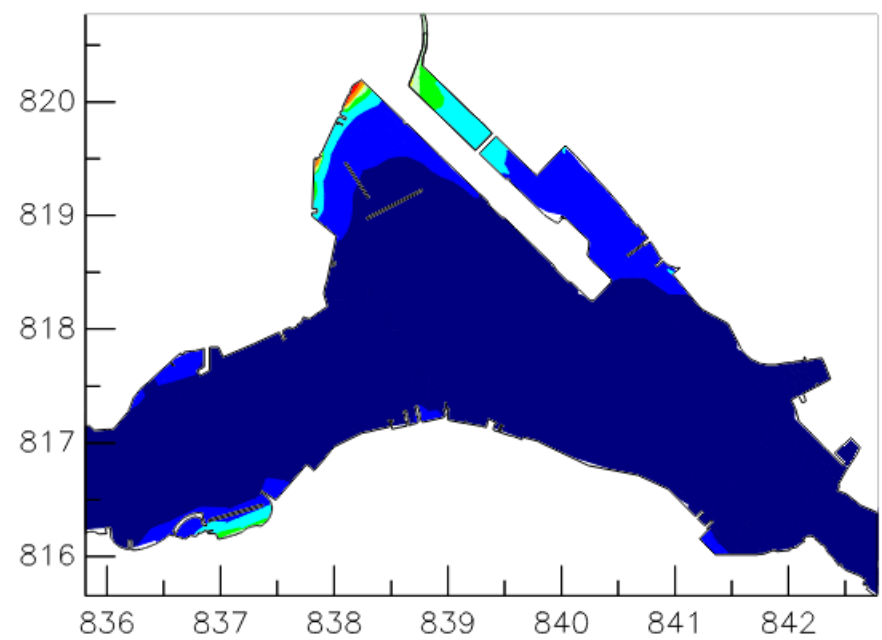
Scenario 1A
Baseline Scenario
(THEES based on discharge license standards)



Scenario 1B
"With Project" Scenario
(THEES based on discharge license standards)



Scenario 2A
Baseline Scenario
(THEES based on 95%ile of actual measurements)



Scenario 2B
"With Project" Scenario
(THEES based on 95%ile of actual measurements)

mg/L

- <0.5
- <1.0
- <1.5
- <2.0
- <2.5
- <3.0
- <5.0
- >5.0

Annual Mean Depth–Averaged
5–Day Biochemical Oxygen Demand Concentration
in Victoria Harbour

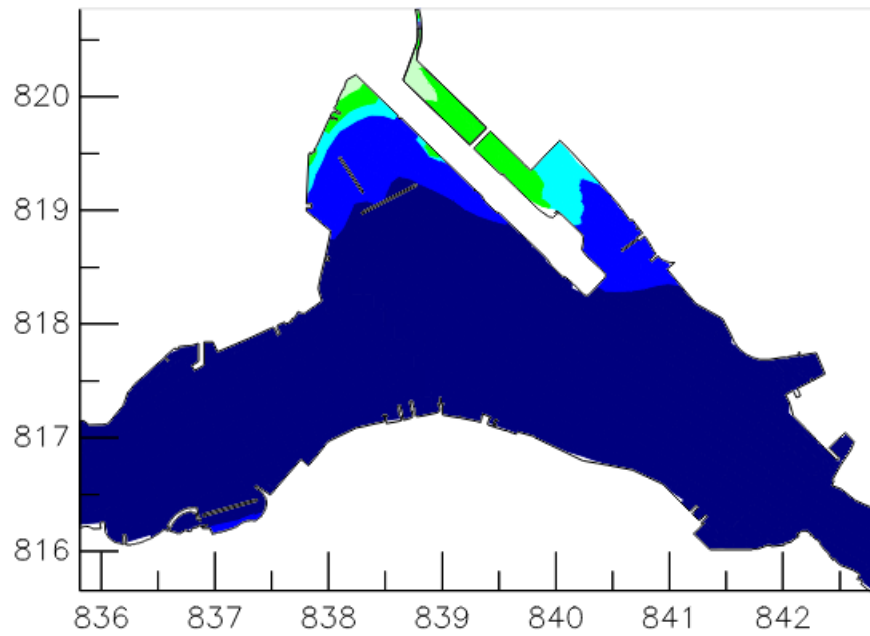
Annual

Figure 04

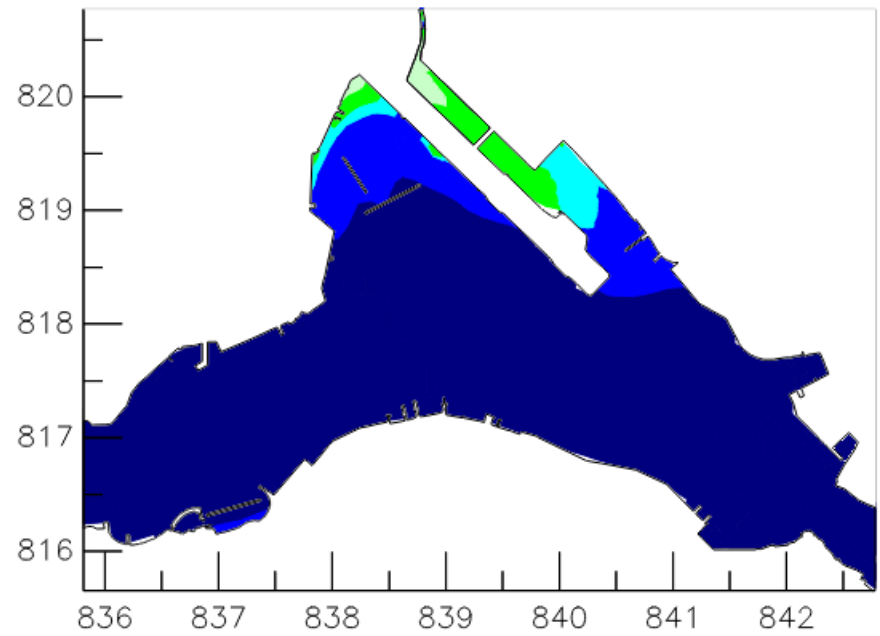
BINNIES

WQO: ≤ 0.4 mg/L

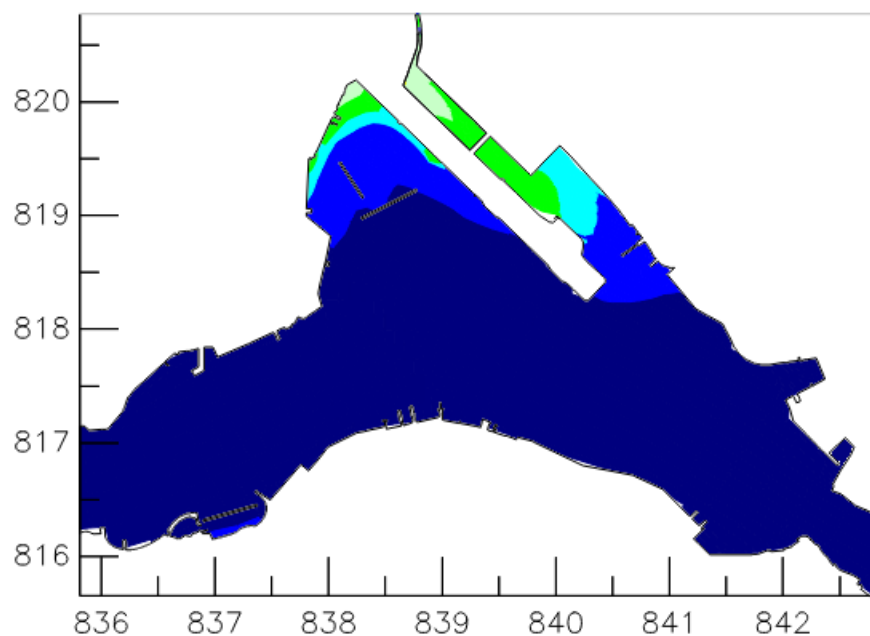
WQO Non-compliance



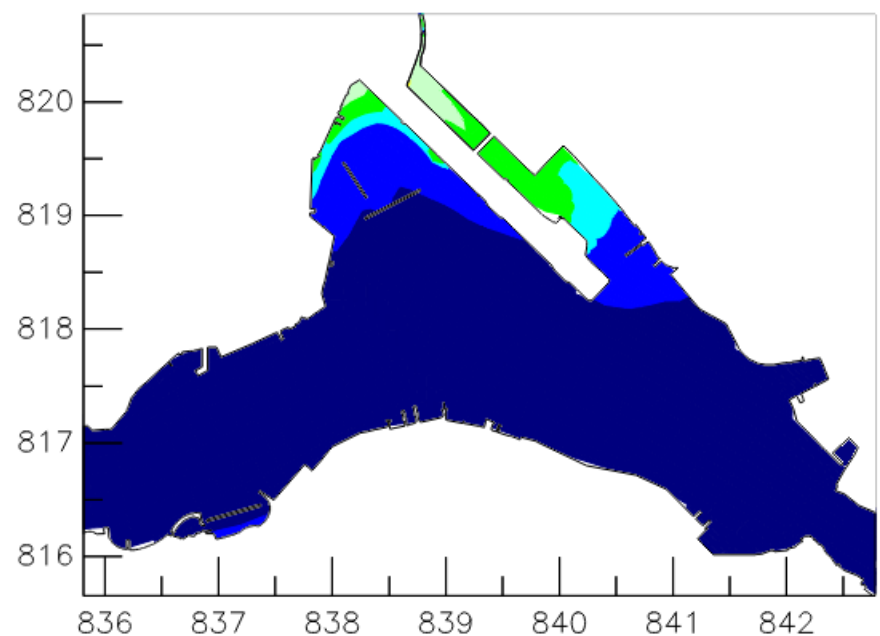
Scenario 1A
Baseline Scenario
(THEES based on discharge license standards)



Scenario 1B
"With Project" Scenario
(THEES based on discharge license standards)



Scenario 2A
Baseline Scenario
(THEES based on 95th percentile of actual measurements)



Scenario 2B
"With Project" Scenario
(THEES based on 95th percentile of actual measurements)

mg/L

- ≤ 0.4
- ≤ 0.8
- ≤ 1.0
- ≤ 2.0
- ≤ 4.0
- > 4.0

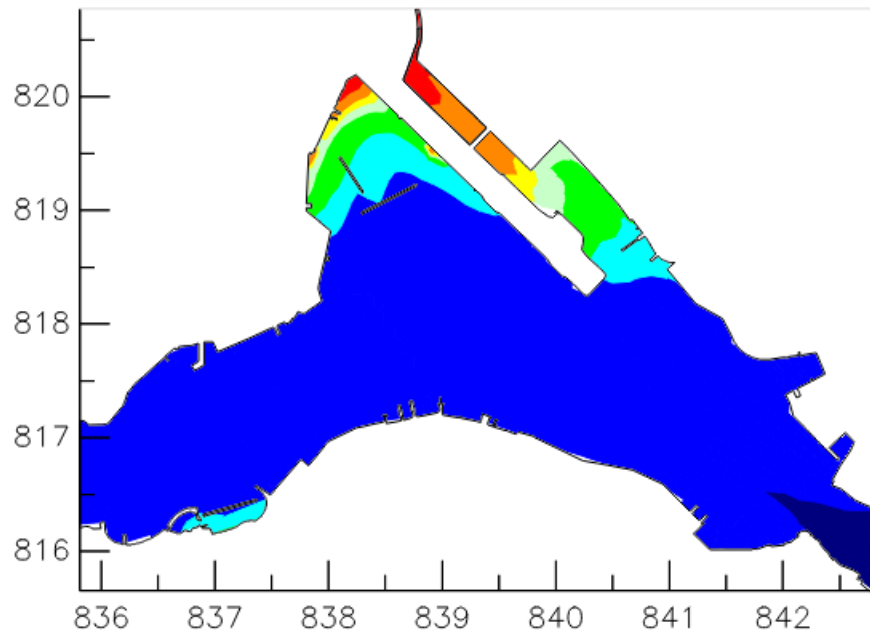
Annual Mean Depth-Averaged
Total Inorganic Nitrogen Concentration
in Victoria Harbour

Annual

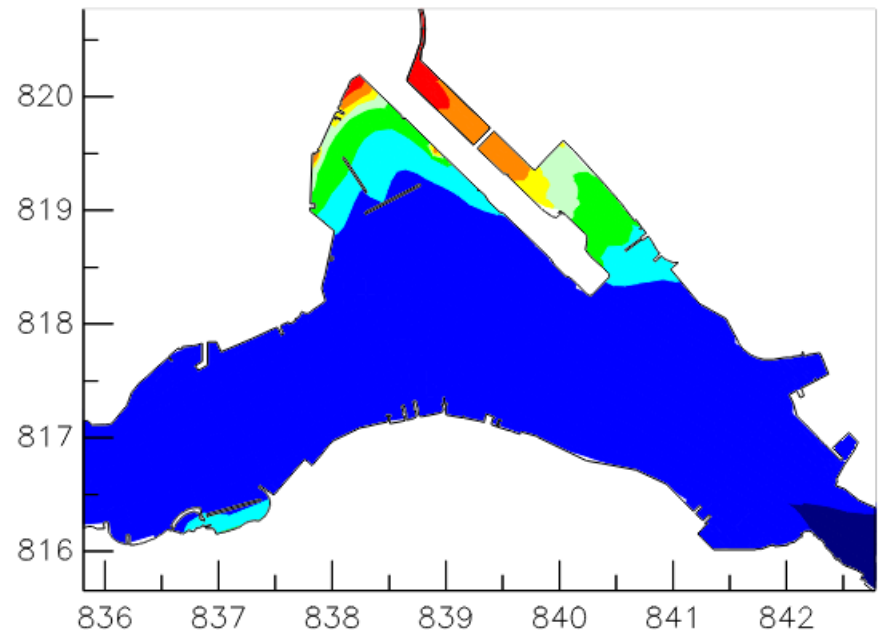
Figure 05

BINNIES

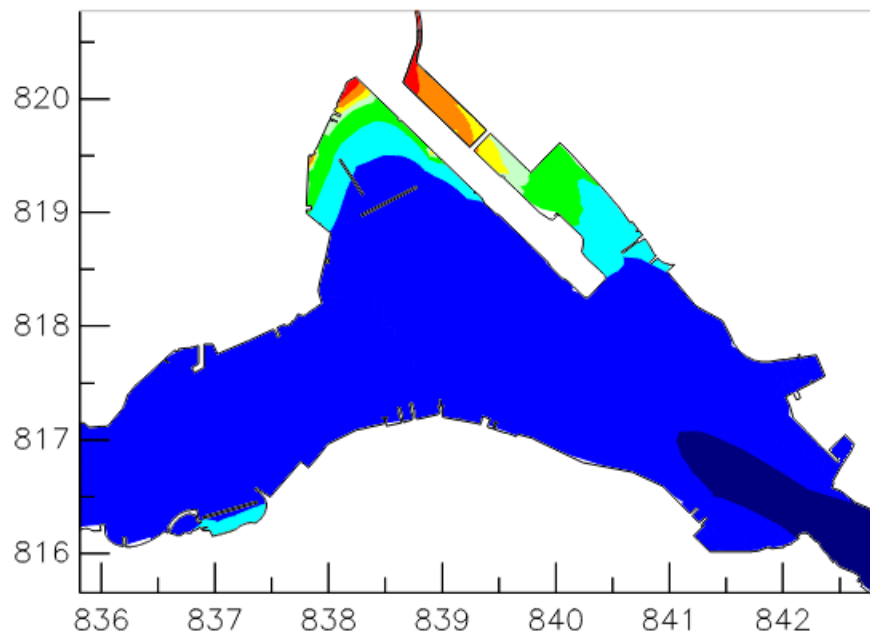
WQO: 0.021 mg/L
 WQO Non-compliance



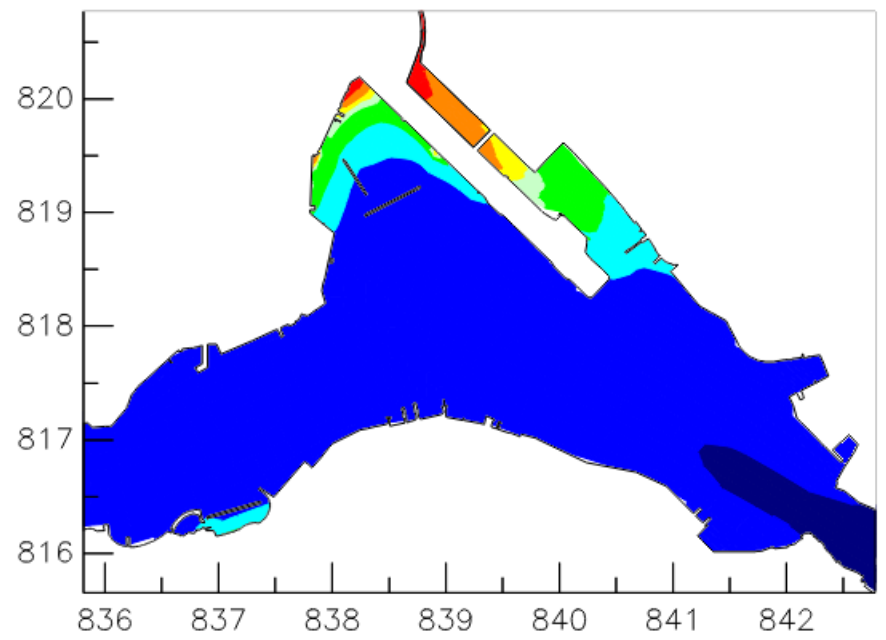
Scenario 1A
 Baseline Scenario
 (THEES based on discharge license standards)



Scenario 1B
 "With Project" Scenario
 (THEES based on discharge license standards)



Scenario 2A
 Baseline Scenario
 (THEES based on 95th percentile of actual measurements)



Scenario 2B
 "With Project" Scenario
 (THEES based on 95th percentile of actual measurements)

mg/L
 <0.005
 <0.010
 <0.015
 <0.021
 <0.025
 <0.030
 <0.050
 >0.050

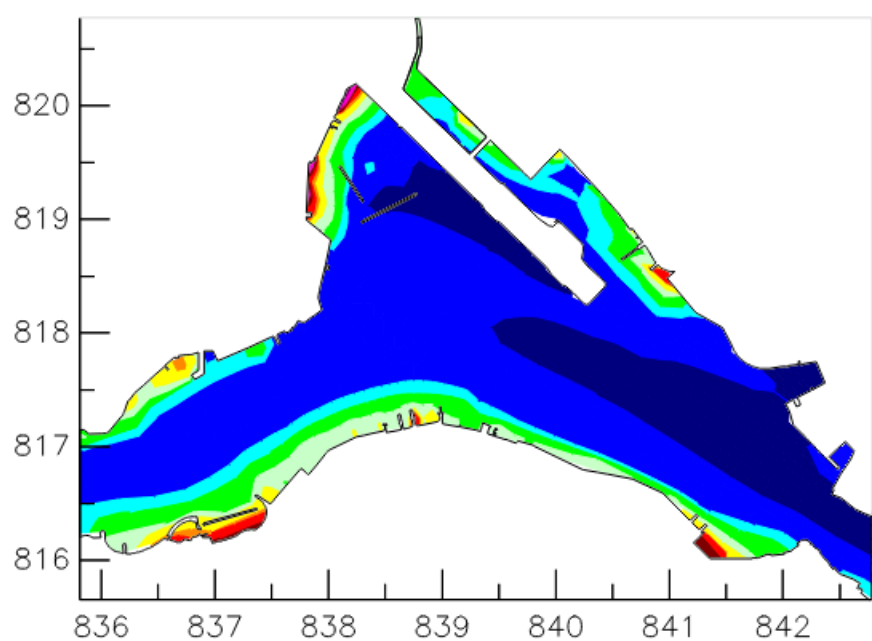
Annual Mean Depth-Averaged
 Unionized Ammonia Concentration
 in Victoria Harbour

Annual

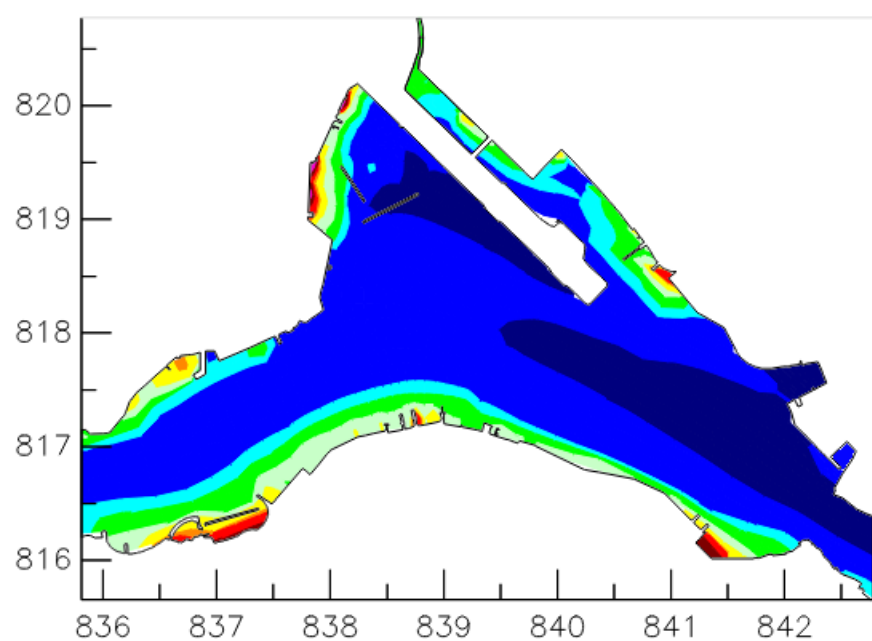
Figure 06

BINNIES

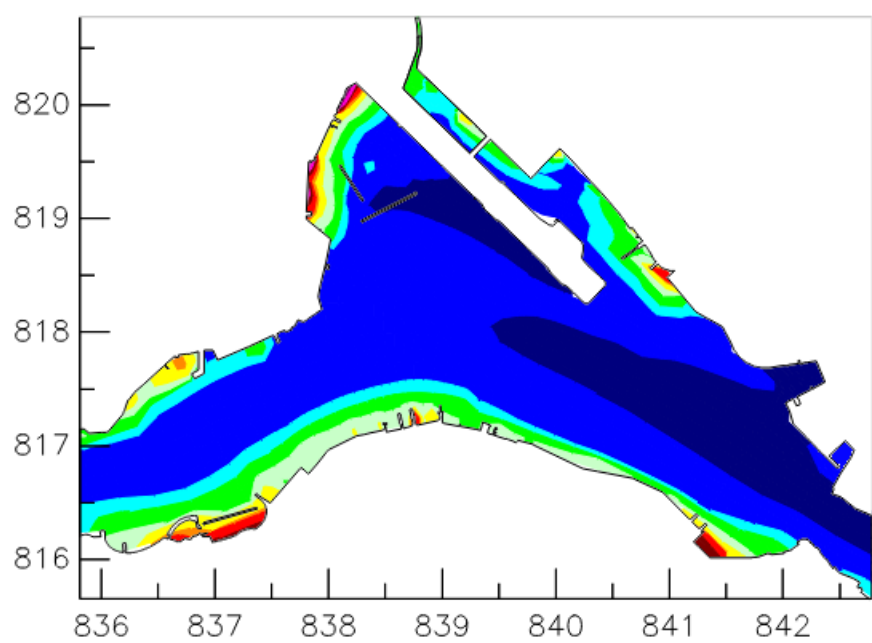
WQO Not Available



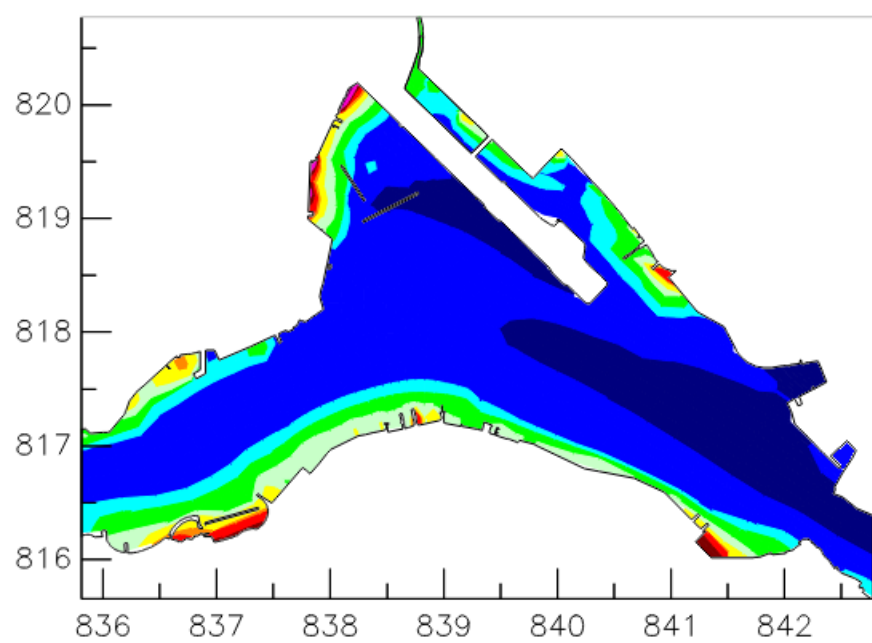
Scenario 1A
Baseline Scenario
(THEES based on discharge license standards)



Scenario 1B
"With Project" Scenario
(THEES based on discharge license standards)



Scenario 2A
Baseline Scenario
(THEES based on 95%ile of actual measurements)



Scenario 2B
"With Project" Scenario
(THEES based on 95%ile of actual measurements)

no./100mL

- <180.00000
- <610.00000
- <1000.00000
- <2000.00000
- <4000.00000
- <8000.00000
- <10000.00000
- <20000.00000
- <40000.00000
- <80000.00000
- >80000.00000

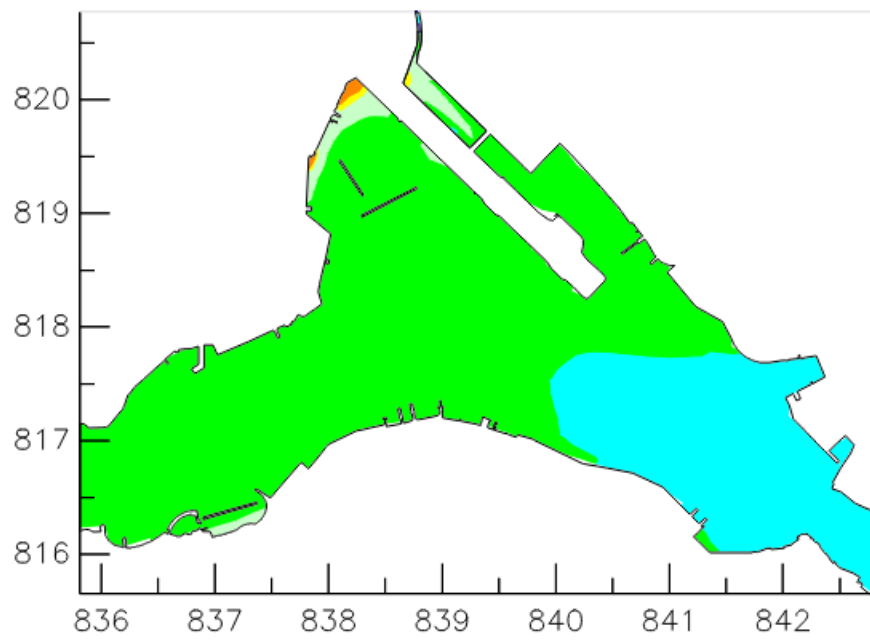
Annual Mean Depth-Averaged
E.coli Concentration(Geometric Mean)
in Victoria Harbour

Annual

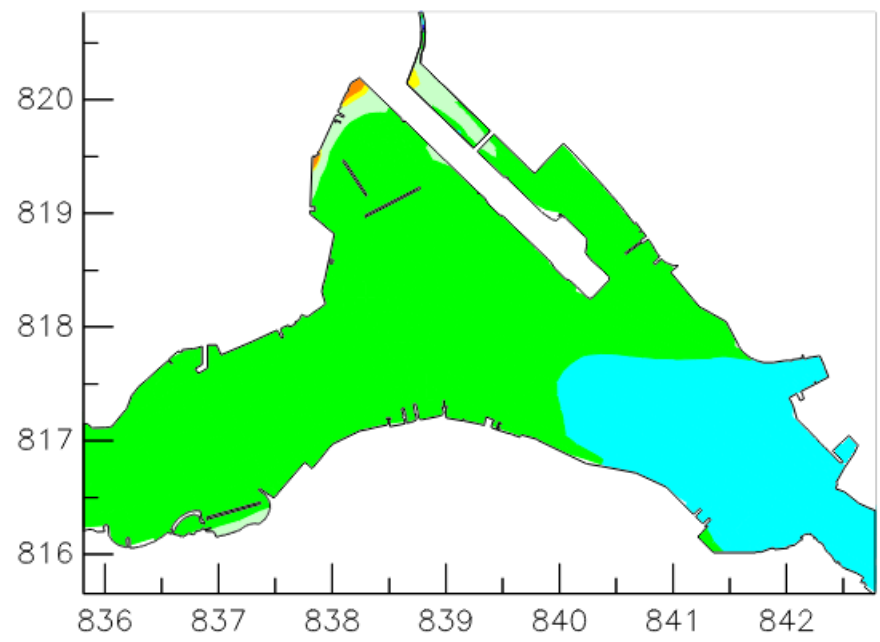
Figure 07

BINNIES

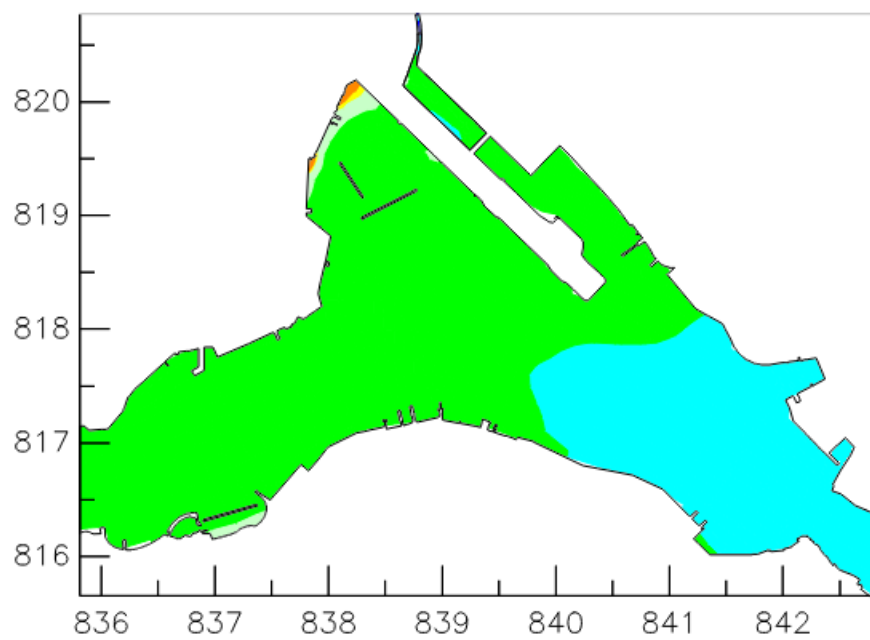
WQO Not Available



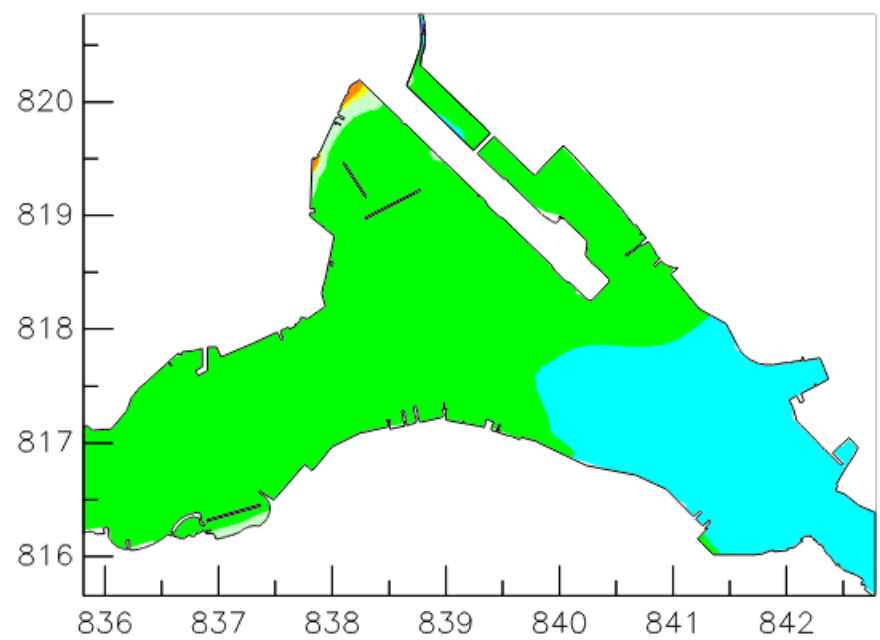
Scenario 1A
Baseline Scenario
(THEES based on discharge license standards)



Scenario 1B
"With Project" Scenario
(THEES based on discharge license standards)



Scenario 2A
Baseline Scenario
(THEES based on 95%ile of actual measurements)



Scenario 2B
"With Project" Scenario
(THEES based on 95%ile of actual measurements)

mg/L

- <1.0
- <2.0
- <4.0
- <6.0
- <8.0
- <10.0
- <20.0
- >20.0

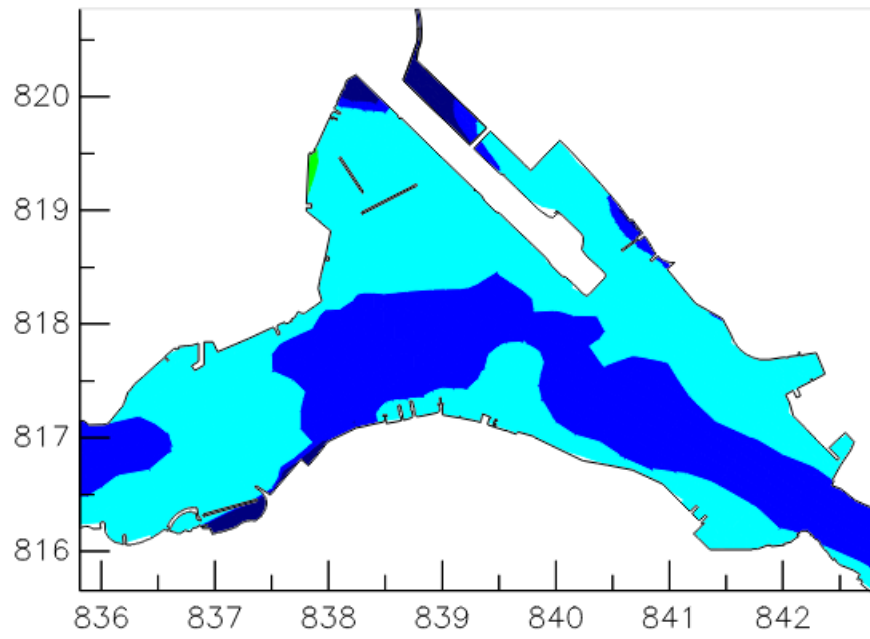
Annual Mean Depth-Averaged
Suspended Solid Concentration
in Victoria Harbour

Annual

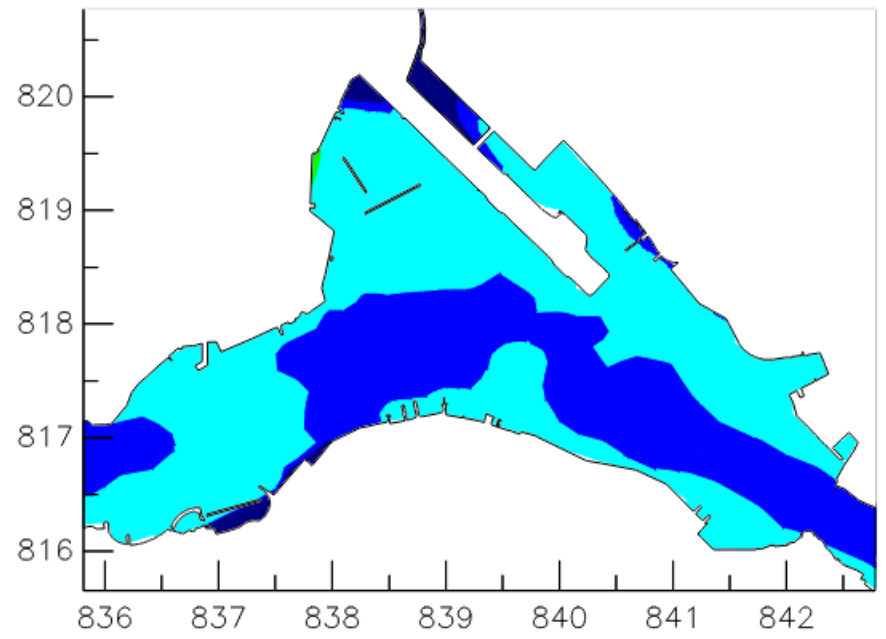
Figure 08

BINNIES

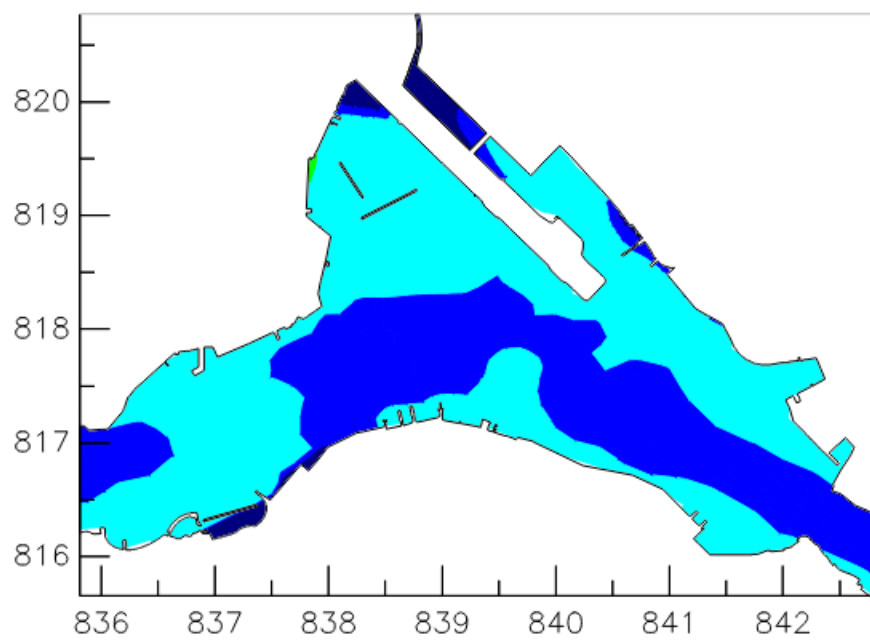
WQO Not Available



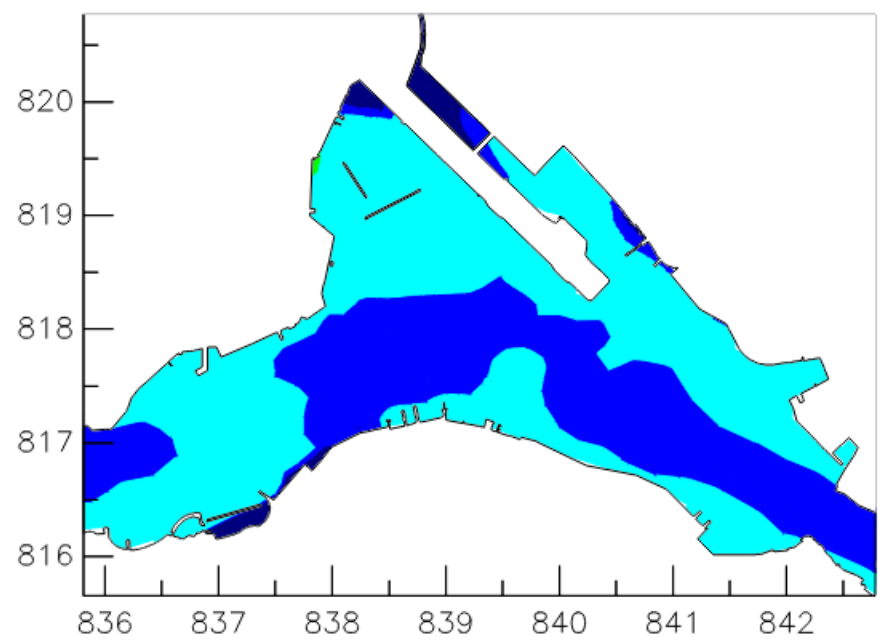
Scenario 1A
Baseline Scenario
(THEES based on discharge license standards)



Scenario 1B
"With Project" Scenario
(THEES based on discharge license standards)



Scenario 2A
Baseline Scenario
(THEES based on 95%ile of actual measurements)



Scenario 2B
"With Project" Scenario
(THEES based on 95%ile of actual measurements)

g/m²/day

- ≤ 0.5
- ≤ 1.0
- ≤ 5.0
- ≤ 10.0
- > 10.0

Annual Mean Sedimentation Rate
in Victoria Harbour

Annual

Figure 09

BINNIES