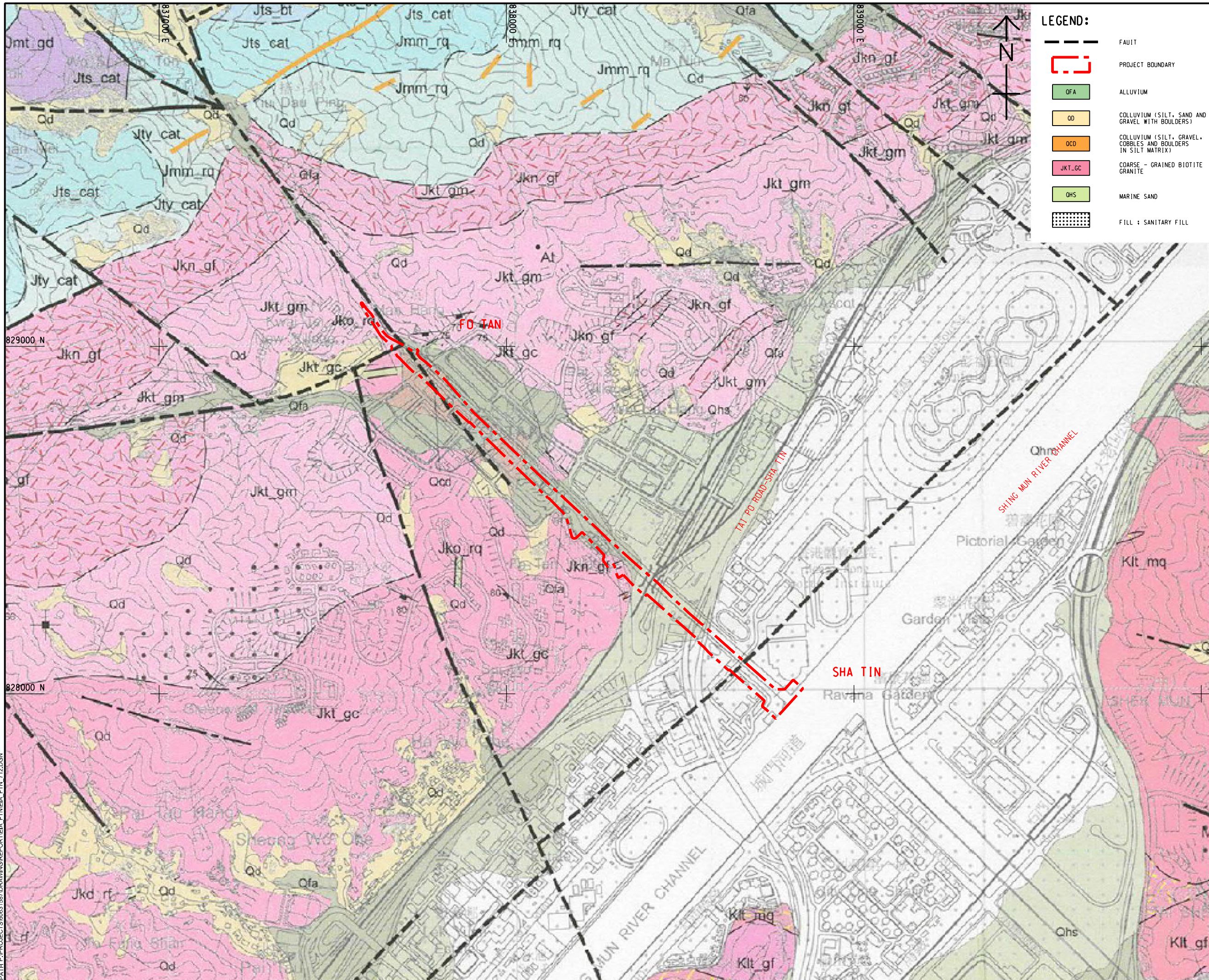


ISO A1 594mm x 841mm  
 Approved:  
 Checked:  
 Designer:  
 Project Management Initials:  
 2021/10/23  
 PATH PROJECTS\6063158\DRAWING\REPORT\EA\_FT\NETA\_FT\11.DGN  
 Plot File by: vicky.xia1



**LEGEND:**

- FAULT
- PROJECT BOUNDARY
- OFA ALLUVIUM
- OD COLLUVIUM (SILT, SAND AND GRAVEL WITH BOULDERS)
- OCD COLLUVIUM (SILT, GRAVEL, COBBLES AND BOULDERS IN SILT MATRIX)
- JKT\_GC COARSE - GRAINED BIOTITE GRANITE
- QHS MARINE SAND
- FILL : SANITARY FILL

**AECOM**

**PROJECT**  
 項目  
 REVITALISATION OF TAI WAI NULLAH AND FO TAN NULLAH - INVESTIGATION

**CLIENT**  
 業主  
 渠務署  
 Drainage Services Department

**CONSULTANT**  
 顧問公司  
 AECOM Asia Company Ltd.  
 www.aecom.com

**SUB-CONSULTANTS**  
 分判工程師/公司

**ISSUE/REVISION**  
 02/21

IR	DATE	DESCRIPTION	CHK.

**STATUS**  
 02/21

**SCALE**  
 1:5000

**DIMENSION UNIT**  
 METRES

**KEY PLAN**  
 02/21

**PROJECT NO.**  
 60631587

**AGREEMENT NO.**  
 CE 54/2019 (DS)

**SHEET TITLE**  
 PUBLISHED GEOLOGICAL MAP - FO TAN NULLAH

**SHEET NUMBER**  
 60631587/EIA/FTN/FIGURE 11.2

This drawing has been prepared for the use of AECOM's client. It may not be used, modified, reproduced or relied upon by third parties, except as agreed by AECOM or as required by law. AECOM accepts no responsibility, and denies any liability whatsoever, to any party, that uses or relies on this drawing without AECOM's express written consent. Do not scale this document. All measurements must be obtained from the stated dimensions.