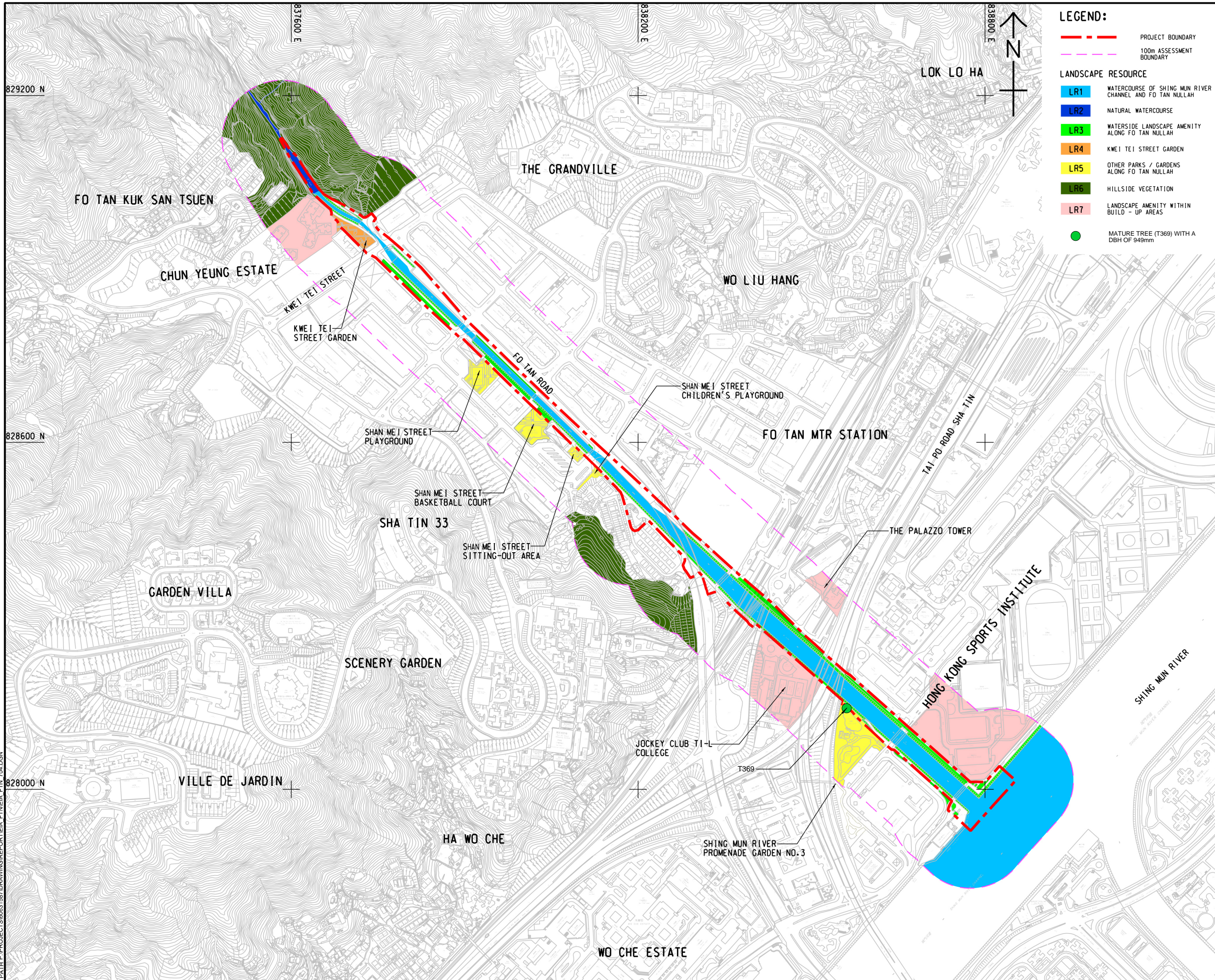


ISO A1 594mm x 841mm
 Approved:
 Checked:
 Designer:
 Project Management Initials:
 2021/12/24
 P:\PROJECTS\60631587\DRAWING\REPORT\EIA_FTIN\EA_FTIN_704.DGN
 Plot File by: lu.yang



LEGEND:

- PROJECT BOUNDARY
- 100m ASSESSMENT BOUNDARY

LANDSCAPE RESOURCE

- LR1 WATERCOURSE OF SHING MUN RIVER CHANNEL AND FO TAN NULLAH
- LR2 NATURAL WATERCOURSE
- LR3 WATERSIDE LANDSCAPE AMENITY ALONG FO TAN NULLAH
- LR4 KWEI TEI STREET GARDEN
- LR5 OTHER PARKS / GARDENS ALONG FO TAN NULLAH
- LR6 HILLSIDE VEGETATION
- LR7 LANDSCAPE AMENITY WITHIN BUILD-UP AREAS
- MATURE TREE (T369) WITH A DBH OF 949mm

AECOM

PROJECT
 項目
 REVITALISATION OF TAI WAI NULLAH AND FO TAN NULLAH - INVESTIGATION

CLIENT
 業主
 渠務署
 Drainage Services Department

CONSULTANT
 顧問公司
 AECOM Asia Company Ltd.
 www.aecom.com

SUB-CONSULTANTS
 分判工程師/公司

ISSUE/REVISION
 修訂

I/R	DATE	DESCRIPTION	CHK.

STATUS
 狀況

SCALE
 比例尺
 A3 1 : 6000

DIMENSION UNIT
 尺寸單位
 METRES

KEY PLAN
 索引圖

PROJECT NO.
 項目編號
 60631587

AGREEMENT NO.
 協議編號
 CE 54/2019 (DS)

SHEET TITLE
 圖名
 LOCATION OF LANDSCAPE RESOURCE

SHEET NUMBER
 圖號
 60631587/EIA/FTN/FIGURE 12.03

This drawing has been prepared for the use of AECOM's client. It may not be used, modified, reproduced or relied upon by third parties, except as agreed by AECOM or as required by law. AECOM accepts no responsibility, and denies any liability whatsoever, to any party that uses or relies on this drawing without AECOM's express written consent. Do not scale this document. All measurements must be obtained from the stated dimensions.