

ISO A1 594mm x 841mm
 Approved:
 Checked:
 Designer:
 Project Management Initials:

VP ID	Location	Viewing Distance to Site	Nature	Presentation of VSR
VP 1	Shan Mei Street Playground	Approx. 5 - 10M	Recreational	C1, I1 & T3
VP 2	Kwei Tei Street Garden	Approx. 50M	Recreational	R3 & REC3
VP 3	Lok King Street Footbridge	Right Above	Travelling	C2, G3, R1, & T2
VP 4	Yuen Wo Road Overpass	Right Above	Travelling	G1, G2 & REC1
VP 5	Shan Mei Street Sitting-out Area	Approx. 5 - 10M	Recreational	REC2, R2, G4,R4, R5 & T1

LEGEND:

- PROJECT BOUNDARY
- I1 REPRESENTATIVE VISUALLY SENSITIVE RECEIVERS
- Visual Envelope (purple outline)
- Primary Zone of Visual Influence (orange outline)
- △ VIEWING POINTS FOR PHOTOMONTAGE
- Yellow rectangle UNDERGROUND STORAGE TANK

VISUAL RESOURCES

- HILLSIDE GREENERY (green shading)
- SHING MUN RIVER CHANNEL (blue shading)

AECOM

PROJECT
 REVITALISATION OF TAI WAI NULLAH AND FO TAN NULLAH - INVESTIGATION

CLIENT
 渠務署
 Drainage Services Department

CONSULTANT
 AECOM Asia Company Ltd.
 www.aecom.com

SUB-CONSULTANTS
 分判工程師有限公司

ISSUE/REVISION

I/R	DATE	DESCRIPTION	CHK.

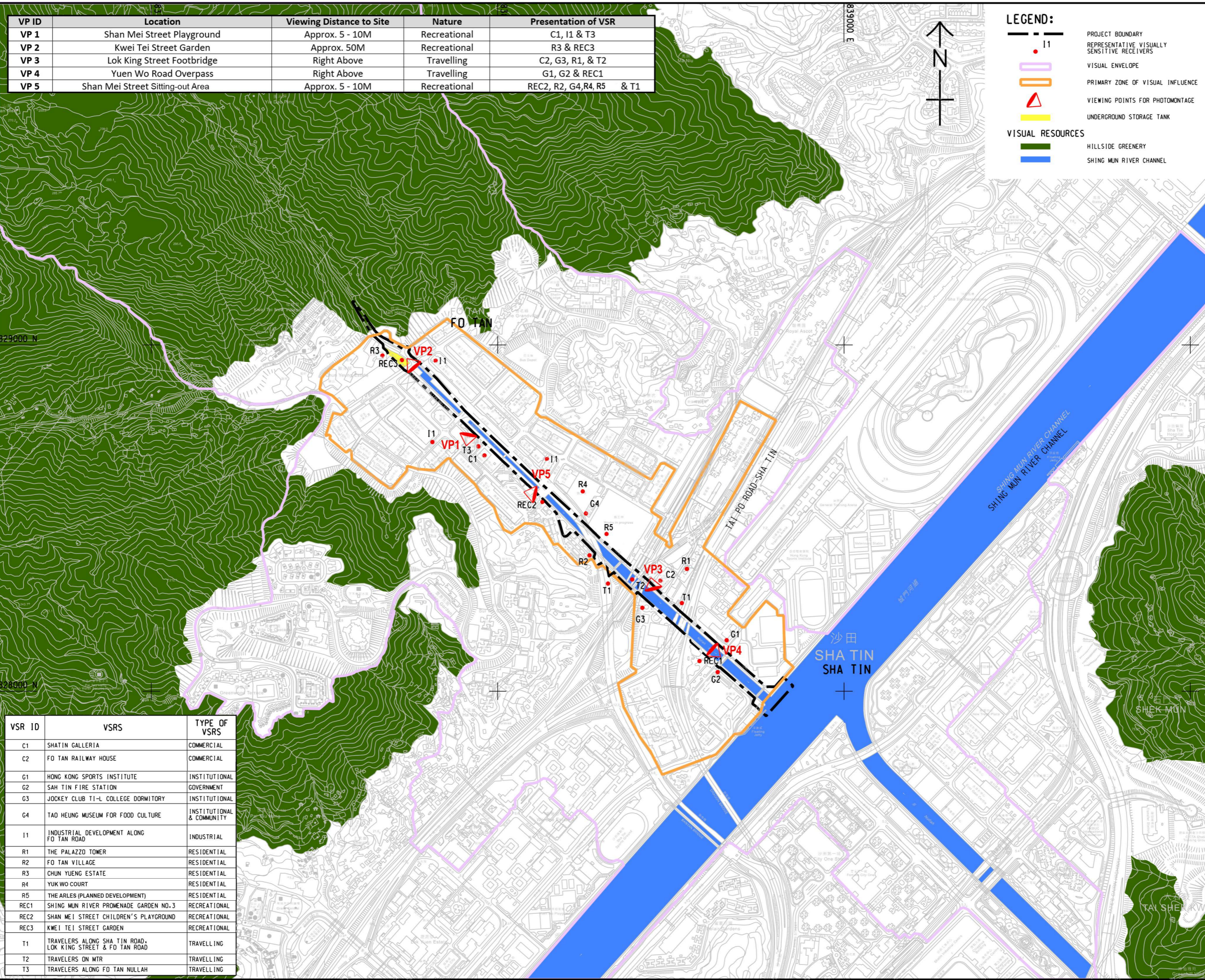
STATUS
 待批

SCALE
 A3 1 : 10000

DIMENSION UNIT
 METRES

KEY PLAN
 索引圖

VSR ID	VSR	TYPE OF VSR
C1	SHATIN GALLERIA	COMMERCIAL
C2	FO TAN RAILWAY HOUSE	COMMERCIAL
G1	HONG KONG SPORTS INSTITUTE	INSTITUTIONAL
G2	SAH TIN FIRE STATION	GOVERNMENT
G3	JOCKEY CLUB T1-L COLLEGE DORMITORY	INSTITUTIONAL
G4	TAD HEUNG MUSEUM FOR FOOD CULTURE	INSTITUTIONAL & COMMUNITY
I1	INDUSTRIAL DEVELOPMENT ALONG FO TAN ROAD	INDUSTRIAL
R1	THE PALAZZO TOWER	RESIDENTIAL
R2	FO TAN VILLAGE	RESIDENTIAL
R3	CHUN YUENG ESTATE	RESIDENTIAL
R4	YUK WO COURT	RESIDENTIAL
R5	THE ARLES (PLANNED DEVELOPMENT)	RESIDENTIAL
REC1	SHING MUN RIVER PROMENADE GARDEN NO.3	RECREATIONAL
REC2	SHAN MEI STREET CHILDREN'S PLAYGROUND	RECREATIONAL
REC3	KWEI TEI STREET GARDEN	RECREATIONAL
T1	TRAVELERS ALONG SHA TIN ROAD, LOK KING STREET & FO TAN ROAD	TRAVELLING
T2	TRAVELERS ON MTR	TRAVELLING
T3	TRAVELERS ALONG FO TAN NULLAH	TRAVELLING



This drawing has been prepared for the use of AECOM's client. It may not be used, modified, reproduced or relied upon by third parties, except as required by law. AECOM accepts no responsibility, and denies any liability whatsoever, to any party that uses or relies on this drawing without AECOM's express written consent. All measurements must be obtained from the stated dimensions.

PROJECT NO.
 60631587

AGREEMENT NO.
 CE 54/2019 (DS)

SHEET TITLE
 VISUAL ENVELOPE & VISUALLY SENSITIVE RECEIVERS

SHEET NUMBER
 60631587/EIA/FTN/FIGURE 12.06