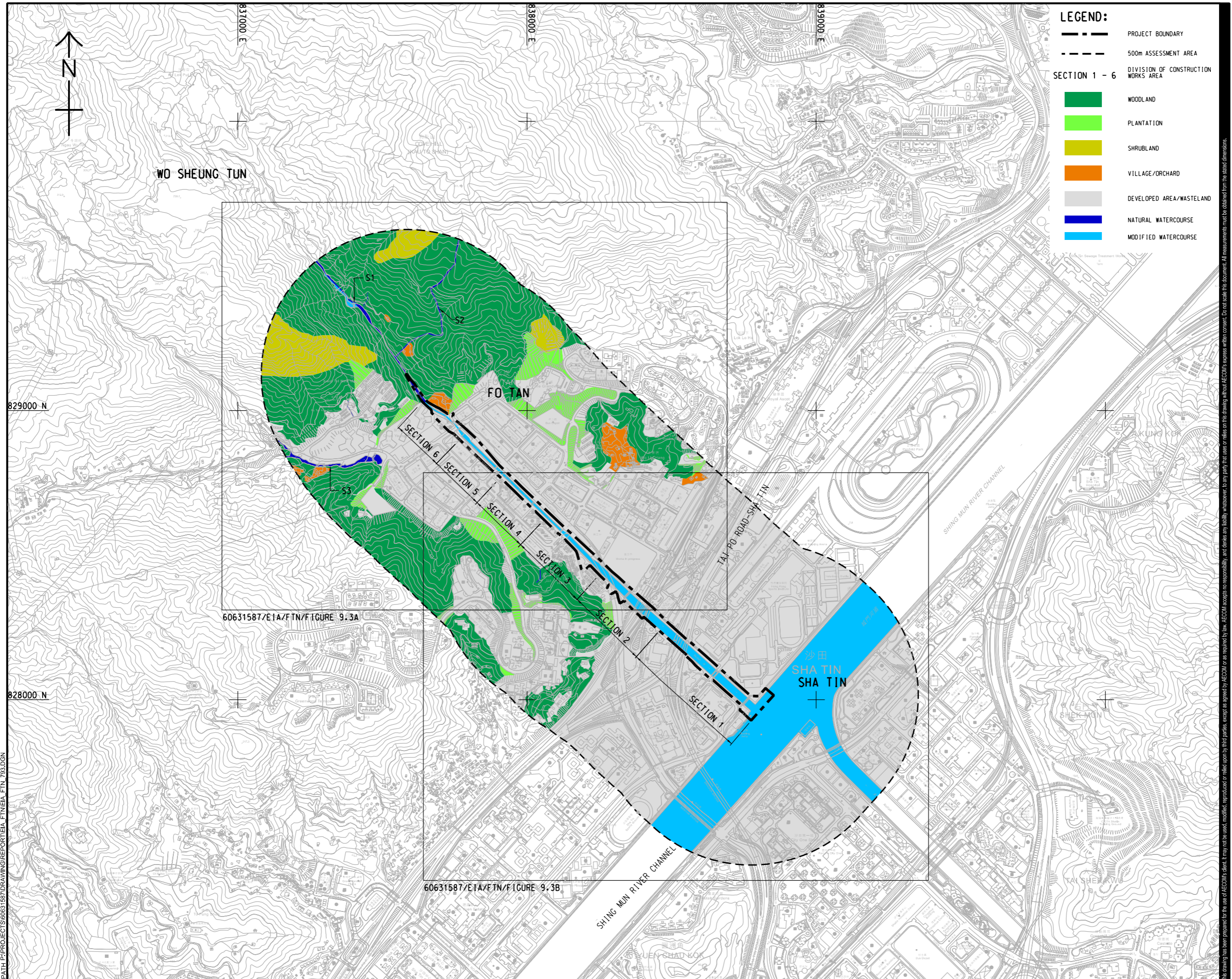


ISO A1 594mm x 841mm  
 Approved:  
 Checked:  
 Designer:  
 Project Management Initials:  
 2022/02/27  
 PATH P:\PROJECTS\60631587\DRAWING\REPORT\EIA\_FTIN\_EIA\_FTIN\_793.DGN



**LEGEND:**

- PROJECT BOUNDARY
- 500m ASSESSMENT AREA
- SECTION 1 - 6**
- WOODLAND
- PLANTATION
- SHRUBLAND
- VILLAGE/ORCHARD
- DEVELOPED AREA/WASTELAND
- NATURAL WATERCOURSE
- MODIFIED WATERCOURSE

**AECOM**

**PROJECT**  
 項目  
**REVITALISATION OF TAI WAI NULLAH AND FO TAN NULLAH - INVESTIGATION**

**CLIENT**  
 客戶  
 渠務署  
 Drainage Services Department

**CONSULTANT**  
 顧問公司  
 AECOM Asia Company Ltd.  
 www.aecom.com

**SUB-CONSULTANTS**  
 分判工程師/顧問公司

**ISSUE/REVISION**  
 修訂

I/R	DATE	DESCRIPTION	CHK.

**STATUS**  
 狀況

**SCALE**  
 比例尺

A3 1: 12000

**DIMENSION UNIT**  
 尺寸單位

METRES

**KEY PLAN**  
 索引圖

**PROJECT NO.**  
 項目編號  
 60631587

**AGREEMENT NO.**  
 協議編號  
 CE 54/2019 (DS)

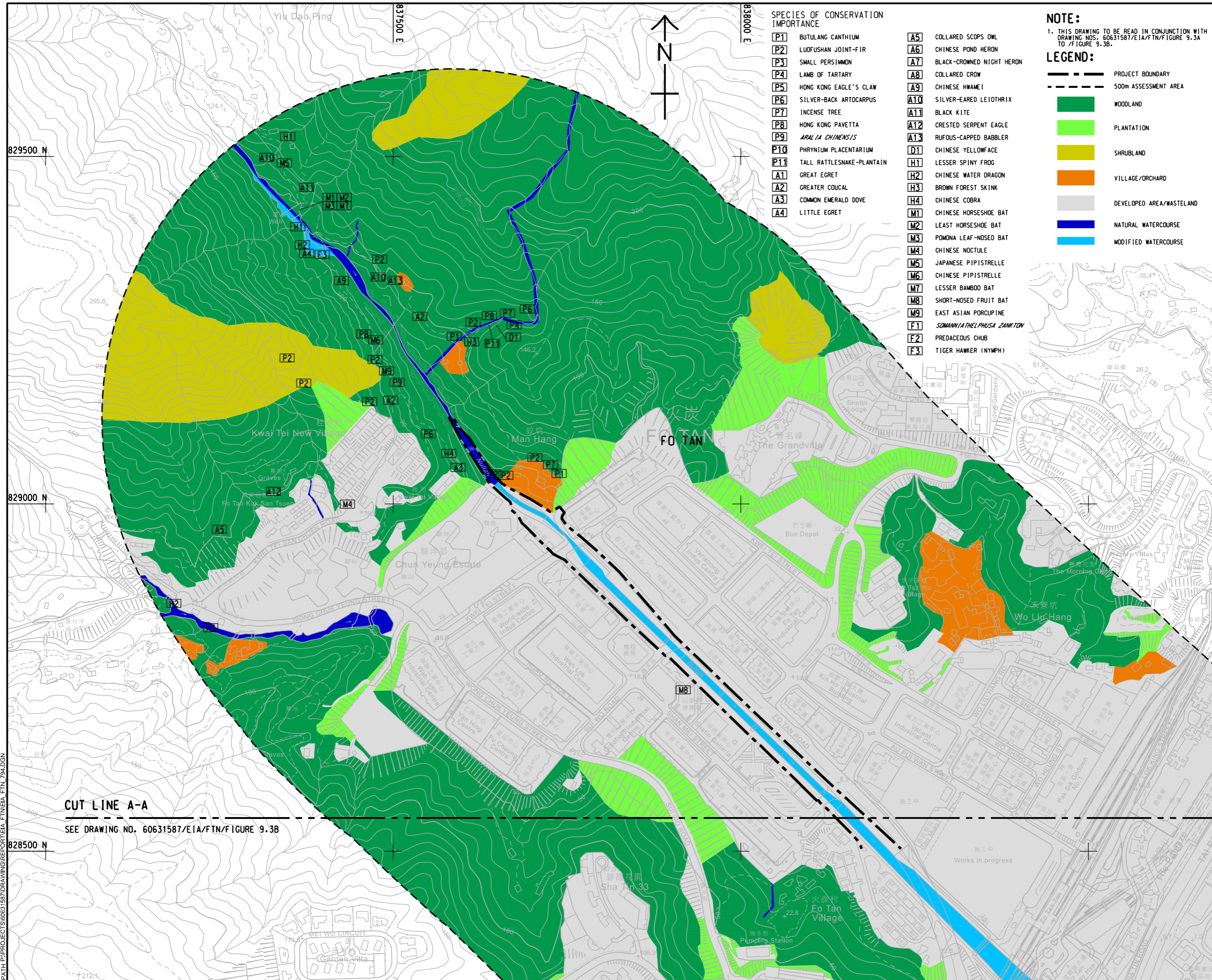
**SHEET TITLE**  
 圖紙名稱  
 HABITAT MAP AND LOCATIONS OF SPECIES OF CONSERVATION IMPORTANCE (KEY PLAN)

**SHEET NUMBER**  
 圖紙編號  
 60631587/EIA/FTN/FIGURE 9.3

This drawing has been prepared for the use of AECOM's client. It may not be used, modified, reproduced or relied upon by third parties, except as agreed by AECOM or as required by law. AECOM accepts no responsibility, and denies any liability whatsoever, for any part, that less or relies on this drawing without AECOM's express written consent. All measurements must be obtained from the stated dimensions.



ISO A1 594mm x 841mm  
Approved:  
Checked:  
Designer:  
Project Management Initials:



- SPECIES OF CONSERVATION IMPORTANCE**
- P1** BUTULANG CANTHIUM
  - P2** LUOFUSHAN JOINT-FIR
  - P3** SMALL PERSIMMON
  - P4** LAMB OF TARTARY
  - P5** HONG KONG EAGLE'S CLAW
  - P6** SILVER-BACK ARTICARPUS
  - P7** INCENSE TREE
  - P8** HONG KONG PAVETTA
  - P9** *ARALIA CHINENSIS*
  - P10** PHRYNIUM PLACENTARIUM
  - P11** TALL RATTLESNAKE-PLANTAIN
  - A1** GREAT EGRET
  - A2** GREATER COUCAL
  - A3** COMMON EMERALD DOVE
  - A4** LITTLE EGRET
  - A5** COLLARED SCOPS OWL
  - A6** CHINESE POND HERON
  - A7** BLACK-CROWNED NIGHT HERON
  - A8** COLLARED CROW
  - A9** CHINESE HWAMEI
  - A10** SILVER-EARED LEIOTHRIX
  - A11** BLACK KITE
  - A12** CRESTED SERPENT EAGLE
  - A13** RUFOUS-CAPPED BABBLER
  - D1** CHINESE YELLOWFACE
  - H1** LESSER SPINY FROG
  - H2** CHINESE WATER DRAGON
  - H3** BROWN FOREST SKINK
  - H4** CHINESE COBRA
  - M1** CHINESE HORSESHOE BAT
  - M2** LEAST HORSESHOE BAT
  - M3** POMONA LEAF-NOSED BAT
  - M4** CHINESE NOCTULE
  - M5** JAPANESE PIPISTRELLE
  - M6** CHINESE PIPISTRELLE
  - M7** LESSER BAMBOO BAT
  - M8** SHORT-NOSED FRUIT BAT
  - M9** EAST ASIAN PORCUPINE
  - F1** *SOMANNAIA THELPHUSA ZANKTON*
  - F2** PREDACEOUS CHUB
  - F3** TIGER HAWKER (NYMPH)

**NOTE:**  
1. THIS DRAWING TO BE READ IN CONJUNCTION WITH DRAWING NOS. 60631587/E1A/FTN/FIGURE 9.3A TO /FIGURE 9.3B.

**LEGEND:**

- PROJECT BOUNDARY
- 500m ASSESSMENT AREA
- WOODLAND
- PLANTATION
- SHRUBLAND
- VILLAGE/ORCHARD
- DEVELOPED AREA/WASTELAND
- NATURAL WATERCOURSE
- MODIFIED WATERCOURSE

**CUT LINE A-A**  
SEE DRAWING NO. 60631587/E1A/FTN/FIGURE 9.3B

**AECOM**

**PROJECT**  
REVITALISATION OF TAI WAI NULLAH AND FO TAN NULLAH - INVESTIGATION

**CLIENT**  
渠務署  
Drainage Services Department

**CONSULTANT**  
AECOM Asia Company Ltd.  
www.aecom.com

**SUB-CONSULTANTS**  
分列工程顧問公司

ISSUE/REVISION			
IR	DATE	DESCRIPTION	CHK.

**STATUS**  
此圖

**SCALE**  
A3 1:5000

**DIMENSION UNIT**  
METRES

**KEY PLAN**  
此圖

**PROJECT NO.**  
60631587

**AGREEMENT NO.**  
CE 54/2019 (DS)

**SHEET TITLE**  
HABITAT MAP AND LOCATIONS OF SPECIES OF CONSERVATION IMPORTANCE

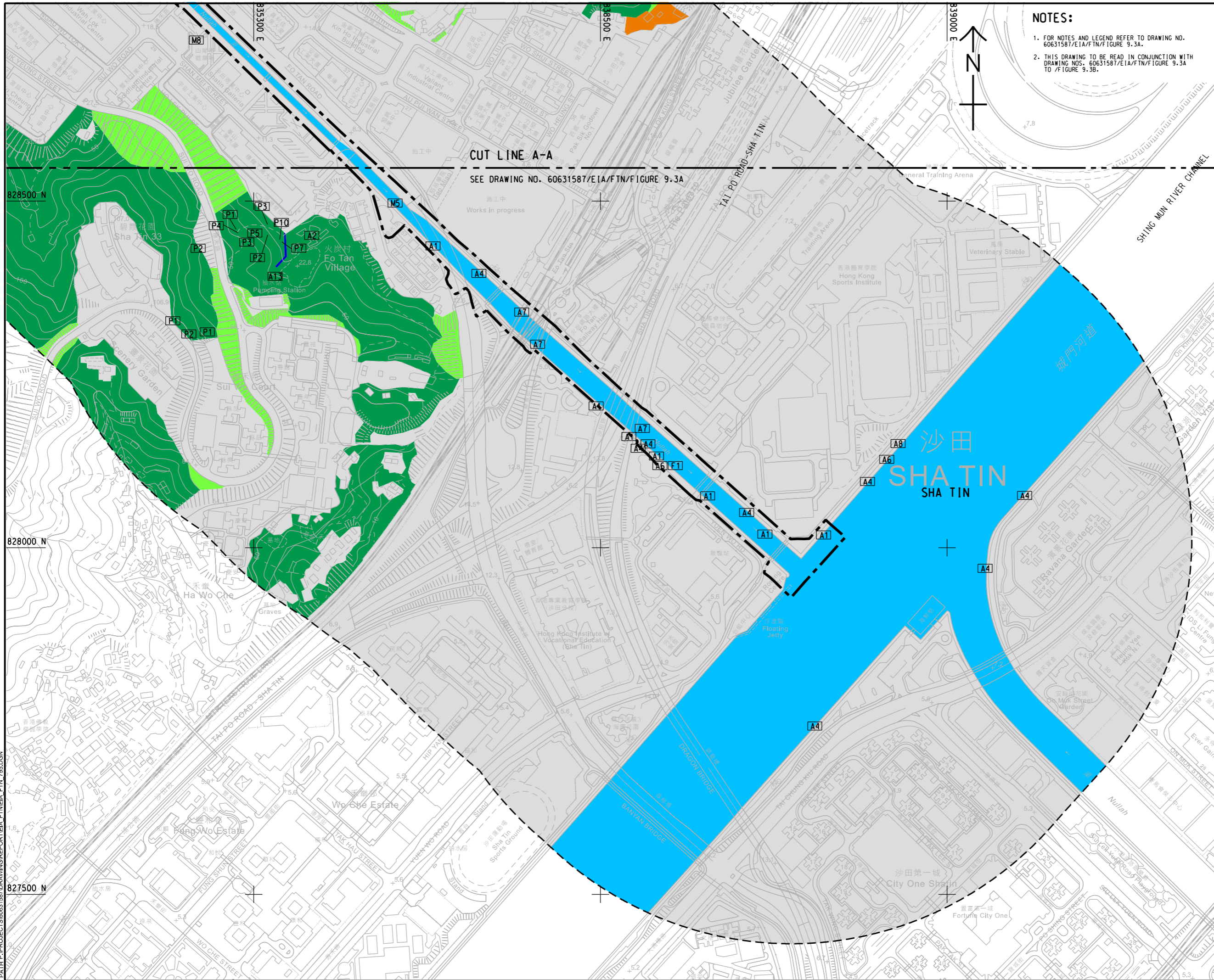
**SHEET NUMBER**  
60631587/E1A/FTN/FIGURE 9.3A

SHEET 1 OF 2

This drawing has been prepared for the use of AECOM's client. It may not be used, modified, reproduced or relied upon by third parties, except as agreed by AECOM or as required by law. AECOM accepts no responsibility, liability, or damages for any loss or damage, whether or not caused in whole or in part, that results from the use of this drawing without AECOM's express written consent. All measurements must be obtained from the stated dimensions.



ISO A1 594mm x 841mm  
 Approved:  
 Checked:  
 Designer:  
 Project Management Initials:  
 2021/10/23  
 PATH P:\PROJECTS\60631587\DRAWINGREPORT\EA\_FTIN\EA\_FTIN\_795.DGN  
 Plot File by: vicky.xia1



**NOTES:**

- FOR NOTES AND LEGEND REFER TO DRAWING NO. 60631587/EIA/FTN/FIGURE 9.3A.
- THIS DRAWING TO BE READ IN CONJUNCTION WITH DRAWING NOS. 60631587/EIA/FTN/FIGURE 9.3A TO /FIGURE 9.3B.

**AECOM**

**PROJECT**  
 項目  
**REVITALISATION OF TAI WAI NULLAH AND FO TAN NULLAH - INVESTIGATION**

**CLIENT**  
 業主  
 渠務署  
 Drainage Services Department

**CONSULTANT**  
 顧問公司  
 AECOM Asia Company Ltd.  
 www.aecom.com

**SUB-CONSULTANTS**  
 分判工程師/顧問公司

**ISSUE/REVISION**

IR	DATE	DESCRIPTION	CHK.

**STATUS**  
 狀況

**SCALE**  
 比例  
 A3 1 : 5000

**DIMENSION UNIT**  
 尺寸單位  
 METRES

**KEY PLAN**  
 索引圖

**PROJECT NO.**  
 項目編號  
 60631587

**AGREEMENT NO.**  
 協議編號  
 CE 54/2019 (DS)

**SHEET TITLE**  
 圖紙名稱  
**HABITAT MAP AND LOCATIONS OF SPECIES OF CONSERVATION IMPORTANCE**

**SHEET NUMBER**  
 圖紙編號  
 60631587/EIA/FTN/FIGURE 9.3B

SHEET 2 OF 2

This drawing has been prepared for the use of AECOM's client. It may not be used, modified, reproduced or relied upon by third parties, except as agreed by AECOM or as required by law. AECOM accepts no responsibility, liability, whatsoever, for any part, that less or relies on this drawing without AECOM's express written consent. All measurements must be obtained from the stated dimensions.