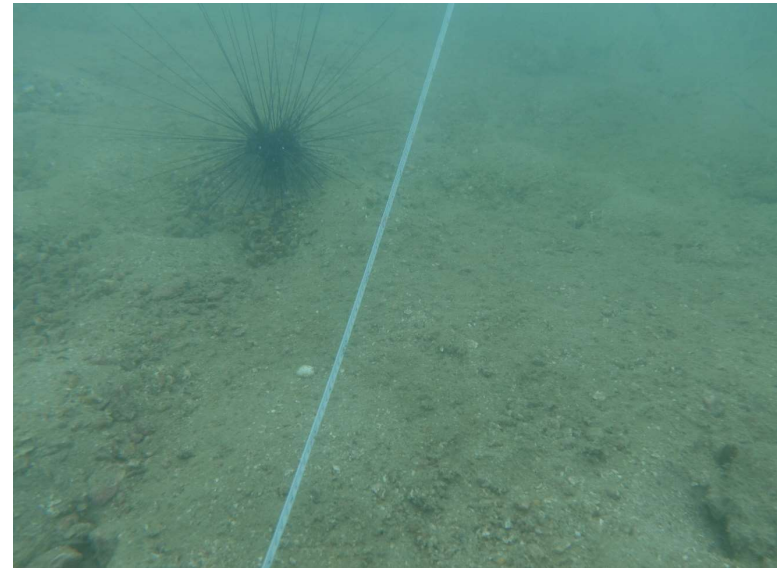




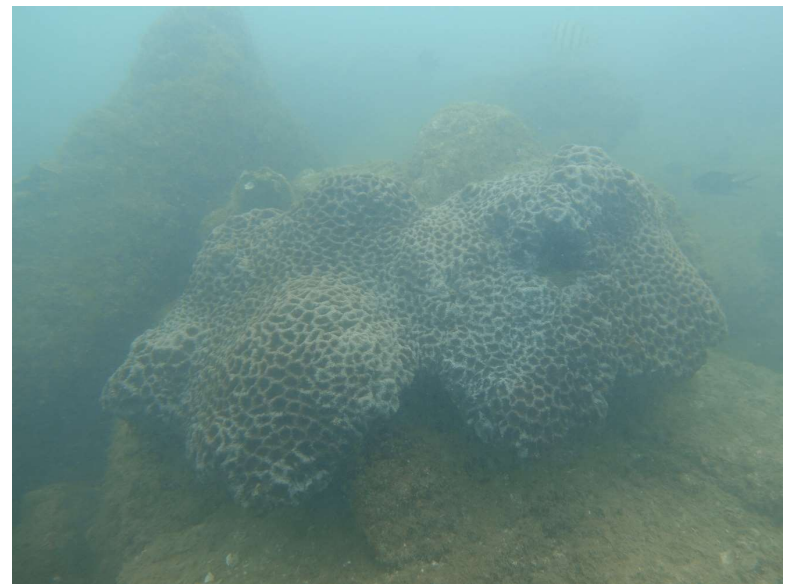
a) Rocky substrate with hard coral species *Oulastrea crispata*, sand and rubble on the seabed in shallow waters (-3 to -4 mCD).



b) Sandy and silty seabed recorded along the survey transect in deeper waters (-5 to -6 mCD).



c) Hard coral species *Porites* sp. recorded during the survey.



d) Hard coral *Platygyra carnosa* recorded at Transect 2 in shallow waters (-3 to -4 mCD).