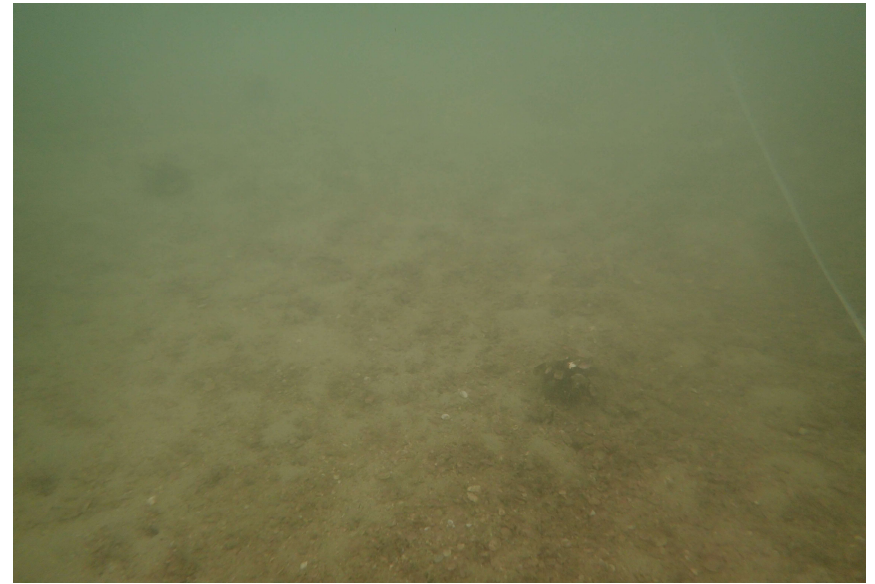




a) Seabed with boulders, sand and rocks mixture recorded in shallow waters (-3 to -4 mCD) at Transect T1.



b) Seabed with mostly sandy substrate recorded in deeper waters (-5 to -6 mCD) at Transect T3.



c) Black coral *Antipathes curvata* recorded at Transect T1.



d) Abundant hard coral *Pavona decussata* recorded in shallow waters (-3 to -4 mCD) at Transect T2.