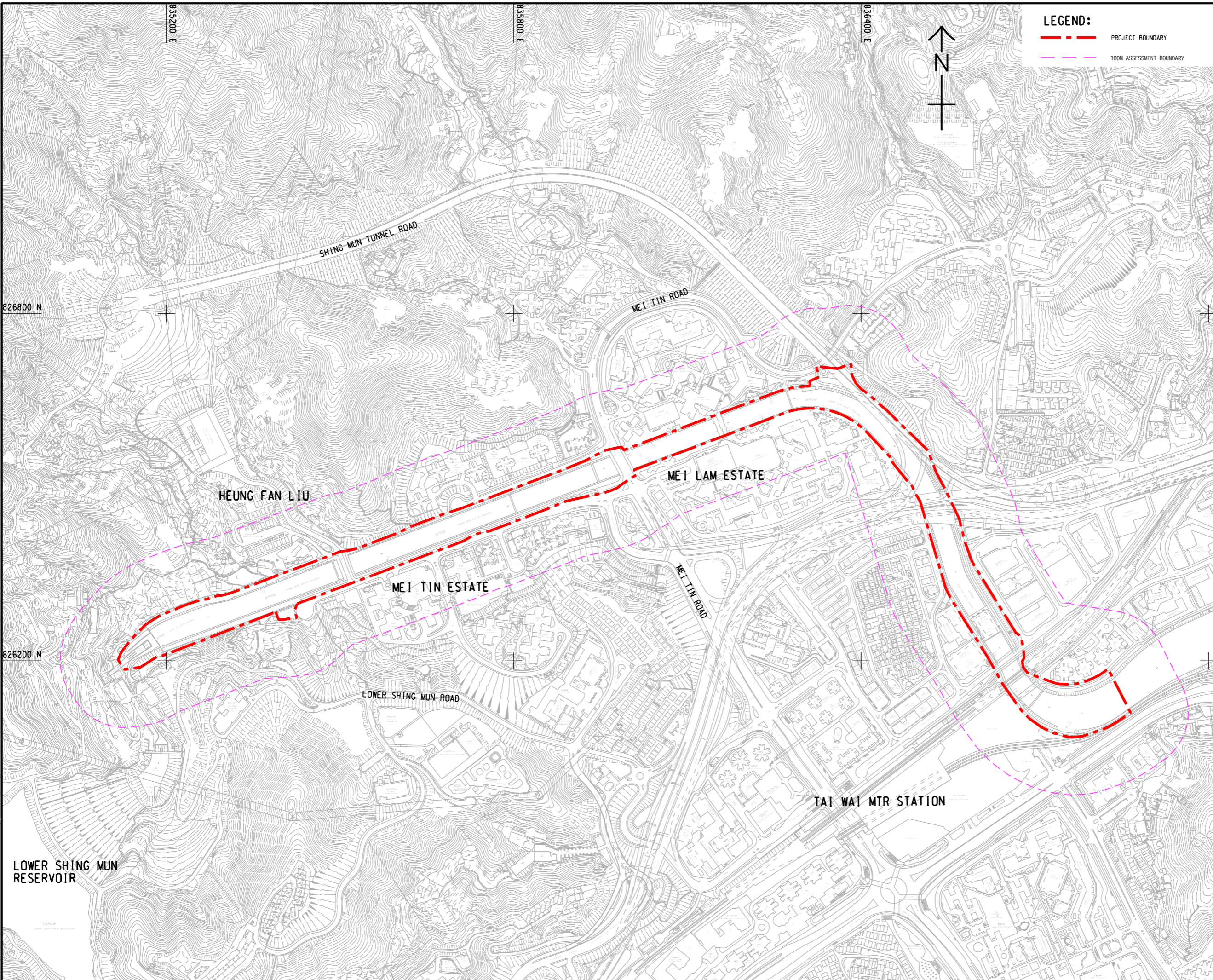


ISO A1 594mm x 841mm
 Approved:
 Checked:
 Designer:
 Project Management Initials:
 826800 N
 826200 N
 835200 E
 835800 E
 836400 E
 File Path: P:\PROJECTS\60631587\DRAWING\REPORT\EIA_TWN\EIA_TWN_702.DGN
 2022/10/19
 L:\ANN2
 This drawing has been prepared for the use of AECOM's client. It may not be used, modified, reproduced or relied upon by third parties, except as agreed by AECOM or as required by law. AECOM accepts no responsibility, and disclaims any liability, whatsoever, for any part, that less or relies on this drawing without AECOM's express written consent. All measurements must be obtained from the stated dimensions.



LEGEND:
 - - - - - PROJECT BOUNDARY
 - - - - - 100M ASSESSMENT BOUNDARY

AECOM
 PROJECT
 項目
 REVITALISATION OF TAI WAI
 NULLAH AND FO TAN NULLAH -
 INVESTIGATION

CLIENT
 業主
 渠務署
 Drainage Services Department

CONSULTANT
 土庫顧問公司
 AECOM Asia Company Ltd.
 www.aecom.com

SUB-CONSULTANTS
 分判工程師/顧問公司

ISSUE/REVISION
 修訂

IR	DATE	DESCRIPTION	CHK.
修訂	日期	修訂描述	核對

STATUS
 狀況

SCALE
 比例
 A3 1 : 6000

DIMENSION UNIT
 尺寸單位
 METRES

KEY PLAN
 索引圖

PROJECT NO.
 項目編號
 60631587

AGREEMENT NO.
 協議編號
 CE 54/2019 (DS)

SHEET TITLE
 圖則名稱
 LANDSCAPE IMPACT ASSESSMENT
 AREA

SHEET NUMBER
 圖則編號
 60631587/EIA/TWN/FIGURE 12.1

LOWER SHING MUN
 RESERVOIR

TAI WAI MTR STATION