

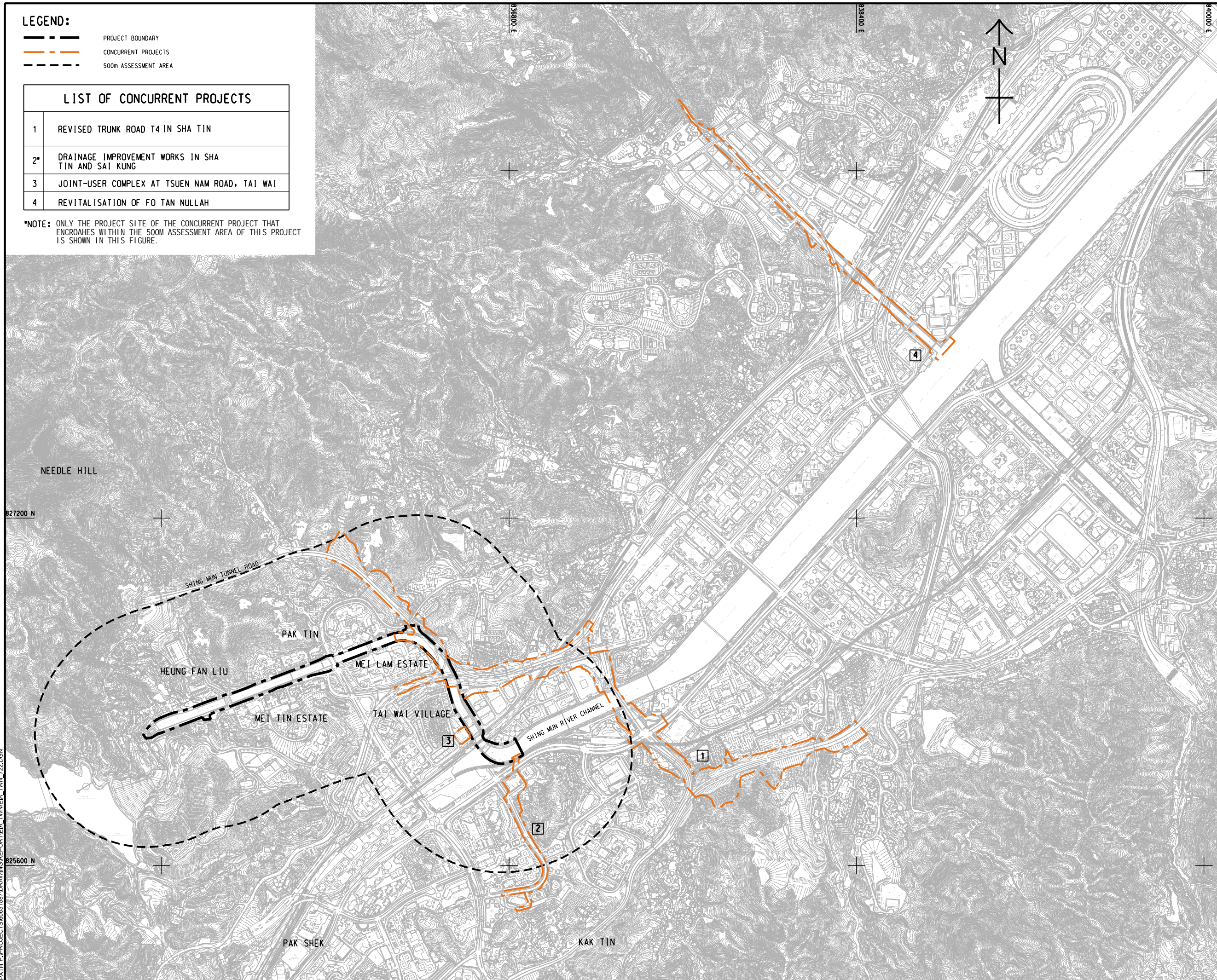
ISO A1 594mm x 841mm  
Approved:  
Checked:  
Designer:  
Project Management Initials:  
2022/10/9  
P:\PROJECTS\60631587\DRAWING\REPORT\EA\_TWINEA\_TWN\_722.DGN

- LEGEND:**
- PROJECT BOUNDARY
  - CONCURRENT PROJECTS
  - 500m ASSESSMENT AREA

**LIST OF CONCURRENT PROJECTS**

1	REVISED TRUNK ROAD T4 IN SHA TIN
2*	DRAINAGE IMPROVEMENT WORKS IN SHA TIN AND SAI KUNG
3	JOINT-USER COMPLEX AT TSUEN NAM ROAD, TAI WAI
4	REVITALISATION OF FO TAN NULLAH

\*NOTE: ONLY THE PROJECT SITE OF THE CONCURRENT PROJECT THAT ENCLOSED WITHIN THE 500M ASSESSMENT AREA OF THIS PROJECT IS SHOWN IN THIS FIGURE.



**PROJECT**

REVITALISATION OF TAI WAI NULLAH AND FO TAN NULLAH - INVESTIGATION

**CLIENT**



**CONSULTANT**

AECOM Asia Company Ltd.  
www.aecom.com

**SUB-CONSULTANTS**

**ISSUE/REVISION**

IR	DATE	DESCRIPTION	CHK.

**STATUS**

**SCALE**                      **DIMENSION UNIT**

A3 1: 16000                      METRES

**KEY PLAN**

**PROJECT NO.**                      **AGREEMENT NO.**

60631587                      CE 54/2019 (DS)

**SHEET TITLE**

INTERACTIONS WITH OTHER PROJECTS

**SHEET NUMBER**

60631587/EIA/TWN/FIGURE 2.3

This drawing has been prepared for the use of AECOM's client. It may not be used, modified, reproduced or relied upon by third parties, except as agreed by AECOM or as required by law. AECOM accepts no responsibility, and disclaims any liability whatsoever, for any part, that assess or relies on this drawing without AECOM's express written consent. All measurements must be obtained from the stated dimensions.