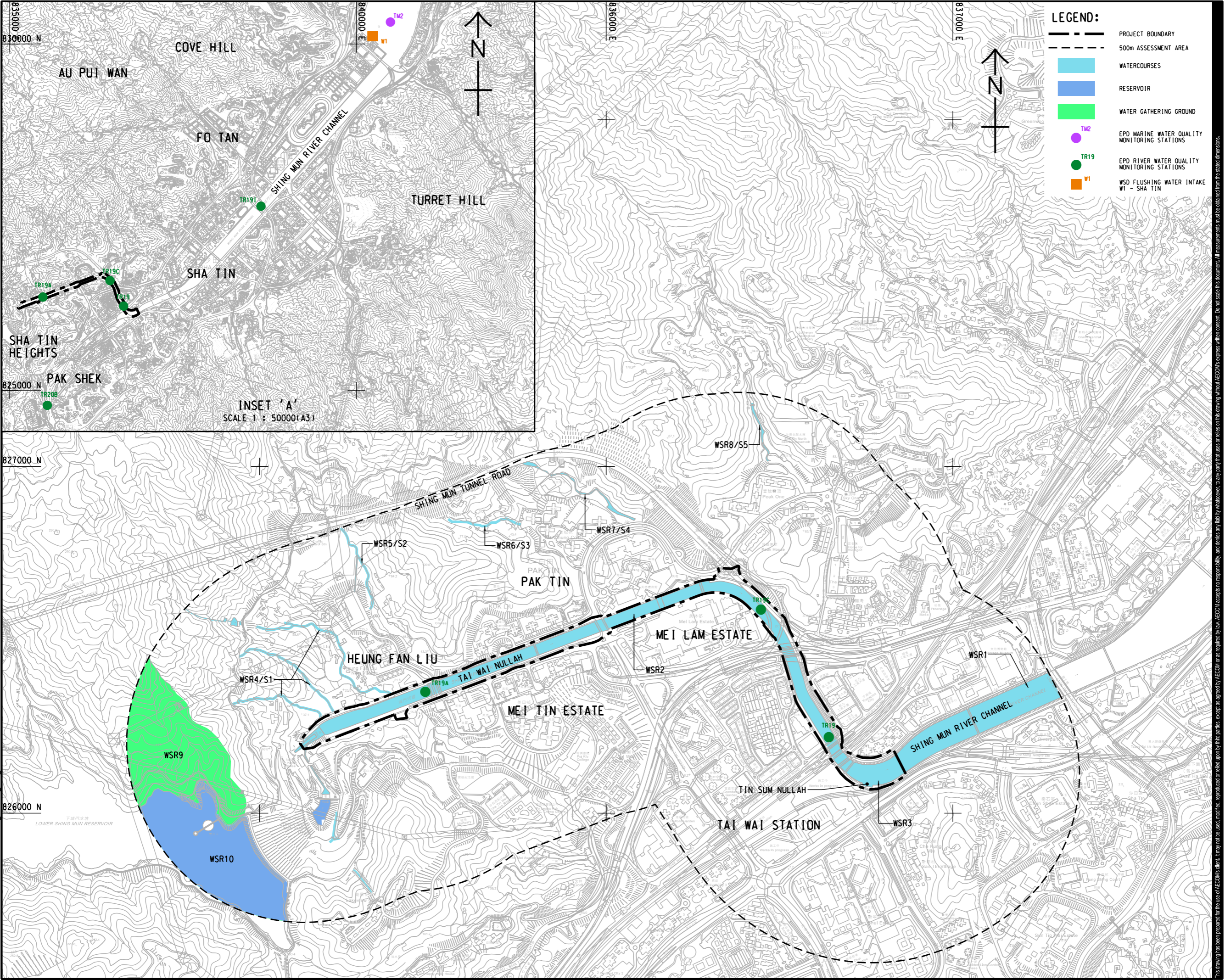


ISO A1 594mm x 841mm
 Approved:
 Checked:
 Designer:
 Project Management Initials:
 2022/11/11
 PATH P:\PROJECTS\60631587\DRAWING\REPORT\EA_TWN\EA_TWN_751.DGN
 Plot File by: jiw
 This drawing has been prepared for the use of AECOM's client. It may not be used, modified, reproduced or relied upon by third parties, except as agreed by AECOM or as required by law. AECOM accepts no responsibility, liability whatsoever, for any party that uses or relies on this drawing without AECOM's express written consent. All measurements must be obtained from the master dimensions.



LEGEND:

- PROJECT BOUNDARY
- 500m ASSESSMENT AREA
- WATERCOURSES
- RESERVOIR
- WATER GATHERING GROUND
- TM2 EPD MARINE WATER QUALITY MONITORING STATIONS
- TR19 EPD RIVER WATER QUALITY MONITORING STATIONS
- WSD FLUSHING WATER INTAKE W1 - SHA TIN

AECOM

PROJECT
 REVITALISATION OF TAI WAI NULLAH AND FO TAN NULLAH - INVESTIGATION

CLIENT
 渠務署
 Drainage Services Department

CONSULTANT
 AECOM Asia Company Ltd.
 www.aecom.com

SUB-CONSULTANTS
 分列工程師有限公司

ISSUE/REVISION

I/R	DATE	DESCRIPTION	CHK.

STATUS
 00/00

SCALE
 A3 1: 10000

DIMENSION UNIT
 METRES

KEY PLAN
 00/00

PROJECT NO.
 60631587

AGREEMENT NO.
 CE 54/2019 (DS)

SHEET TITLE
 LOCATION OF WATER SENSITIVE RECEIVERS AND EPD MONITORING STATIONS

SHEET NUMBER
 60631587/EIA/TWN/FIGURE 5.1