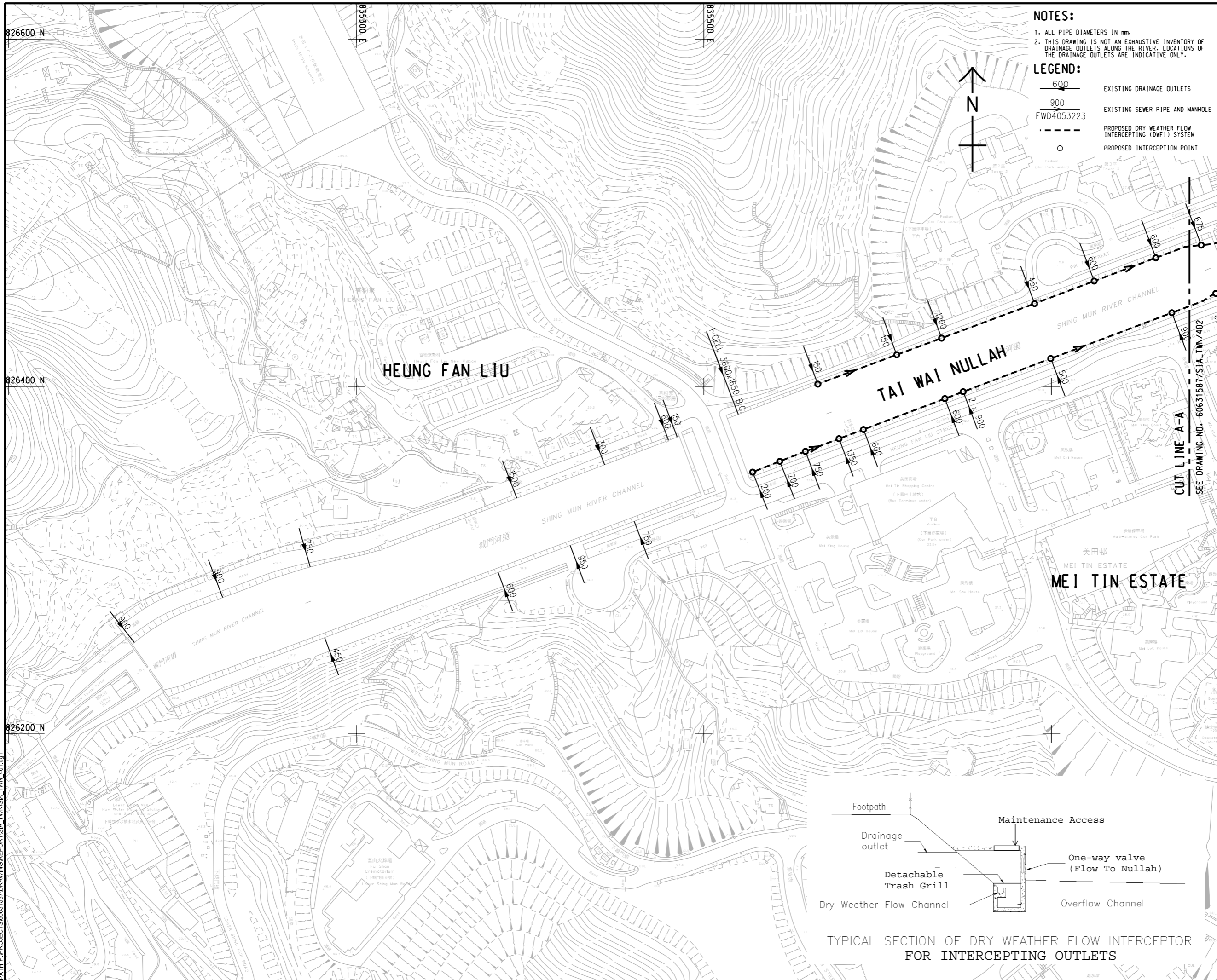


ISO A1 594mm x 841mm  
Approved:  
Checked:  
Designer:  
Project Management Initials:



- NOTES:**
1. ALL PIPE DIAMETERS IN mm.
  2. THIS DRAWING IS NOT AN EXHAUSTIVE INVENTORY OF DRAINAGE OUTLETS ALONG THE RIVER. LOCATIONS OF THE DRAINAGE OUTLETS ARE INDICATIVE ONLY.
- LEGEND:**
- 600 EXISTING DRAINAGE OUTLETS
  - 900 EXISTING SEWER PIPE AND MANHOLE
  - FWD4053223 PROPOSED DRY WEATHER FLOW INTERCEPTING (DWFI) SYSTEM
  - O PROPOSED INTERCEPTION POINT

**AECOM**

**PROJECT**  
REVITALISATION OF TAI WAI NULLAH AND FO TAN NULLAH - INVESTIGATION

**CLIENT**  
渠務署  
Drainage Services Department

**CONSULTANT**  
AECOM Asia Company Ltd.  
www.aecom.com

**SUB-CONSULTANTS**  
分列工程師有限公司

**ISSUE/REVISION**

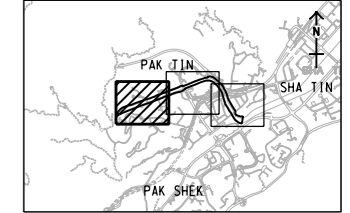
NO.	DATE	DESCRIPTION	CHK.

**STATUS**  
待批

**SCALE**  
比例  
A3 1:2000

**DIMENSION UNIT**  
單位  
METRES

**KEY PLAN** A3 1:100000

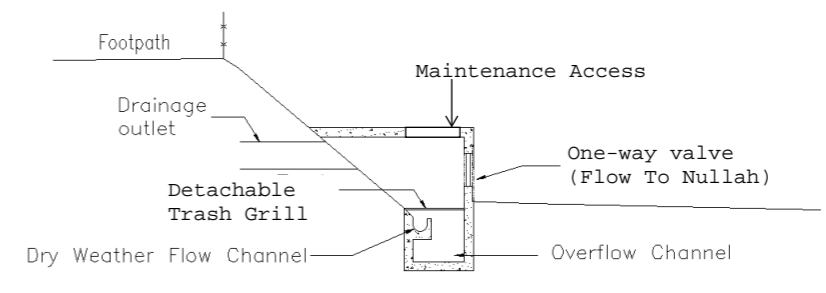


**PROJECT NO.**  
60631587

**AGREEMENT NO.**  
CE 54/2019 (DS)

**SHEET TITLE**  
LAYOUT PLAN FOR PROPOSED DRY WEATHER FLOW INTERCEPTOR (DWFI) SYSTEM FOR TAI WAI NULLAH SHEET 1 OF 3

**SHEET NUMBER**  
圖號  
60631587/EIA/TWN/FIGURE 8.1



TYPICAL SECTION OF DRY WEATHER FLOW INTERCEPTOR FOR INTERCEPTING OUTLETS

This drawing has been prepared for the use of AECOM's client. It may not be used, modified, reproduced or relied upon by third parties, except as agreed by AECOM in writing. AECOM accepts no responsibility, and disclaims any liability, whatsoever, for any part, that is less or more than this drawing, without AECOM's express written consent. All measurements must be obtained from the stated dimensions.