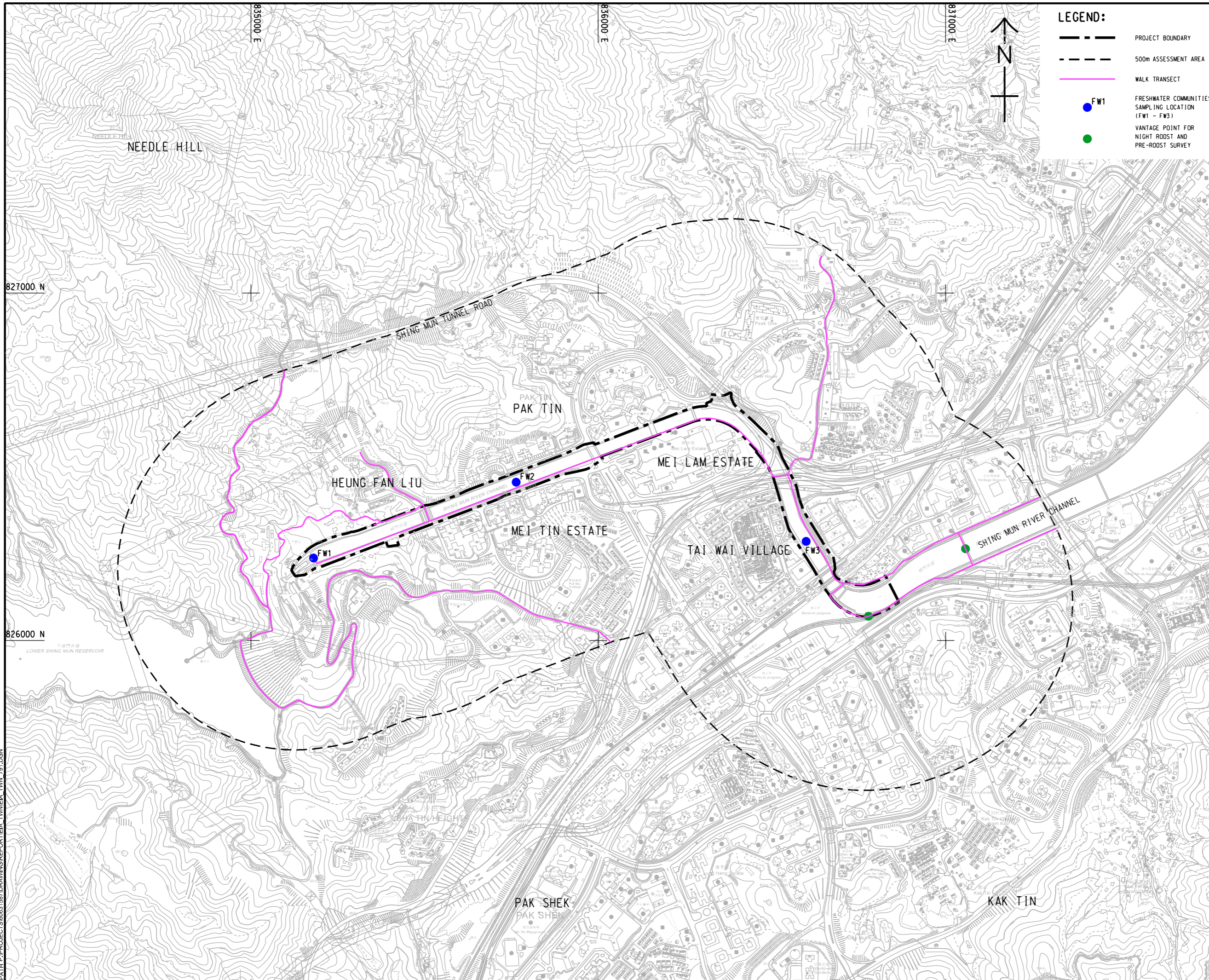


ISO A1 594mm x 841mm
 Approved:
 Checked:
 Designer:
 Project Management Initials:
 2022/02/29
 PATH P\PROJECTS\60631587\DRAWING\REPORT\EA_TWNEIA_TWN_791.DGN



LEGEND:

- PROJECT BOUNDARY
- 500m ASSESSMENT AREA
- WALK TRANSECT
- FW1
FRESHWATER COMMUNITIES SAMPLING LOCATION (FW1 - FW3)
- VANTAGE POINT FOR NIGHT ROOST AND PRE-ROOST SURVEY

AECOM

PROJECT
 項目
REVITALISATION OF TAI WAI NULLAH AND FO TAN NULLAH - INVESTIGATION

CLIENT
 業主
 渠務署
 Drainage Services Department

CONSULTANT
 土庫顧問公司
 AECOM Asia Company Ltd.
 www.aecom.com

SUB-CONSULTANTS
 分判工程師公司

ISSUE/REVISION
 修訂

I/R	DATE	DESCRIPTION	CHK.

STATUS
 狀況

SCALE
 比例
 A3 1 : 10000

DIMENSION UNIT
 尺寸單位
 METRES

KEY PLAN
 索引圖

PROJECT NO.
 項目編號
 60631587

AGREEMENT NO.
 協議編號
 CE 54/2019 (DS)

SHEET TITLE
 圖紙標題
 LOCATIONS OF TERRESTRIAL ECOLOGICAL SURVEYS

SHEET NUMBER
 圖紙編號
 60631587/EIA/TWN/FIGURE 9.1

This drawing has been prepared for the use of AECOM's client. It may not be used, modified, reproduced or relied upon by third parties, except as agreed by AECOM or as required by law. AECOM accepts no responsibility, and disclaims any liability whatsoever, for any part, that is used or relied on in this drawing without AECOM's express written consent. All measurements must be obtained from the stated dimensions.