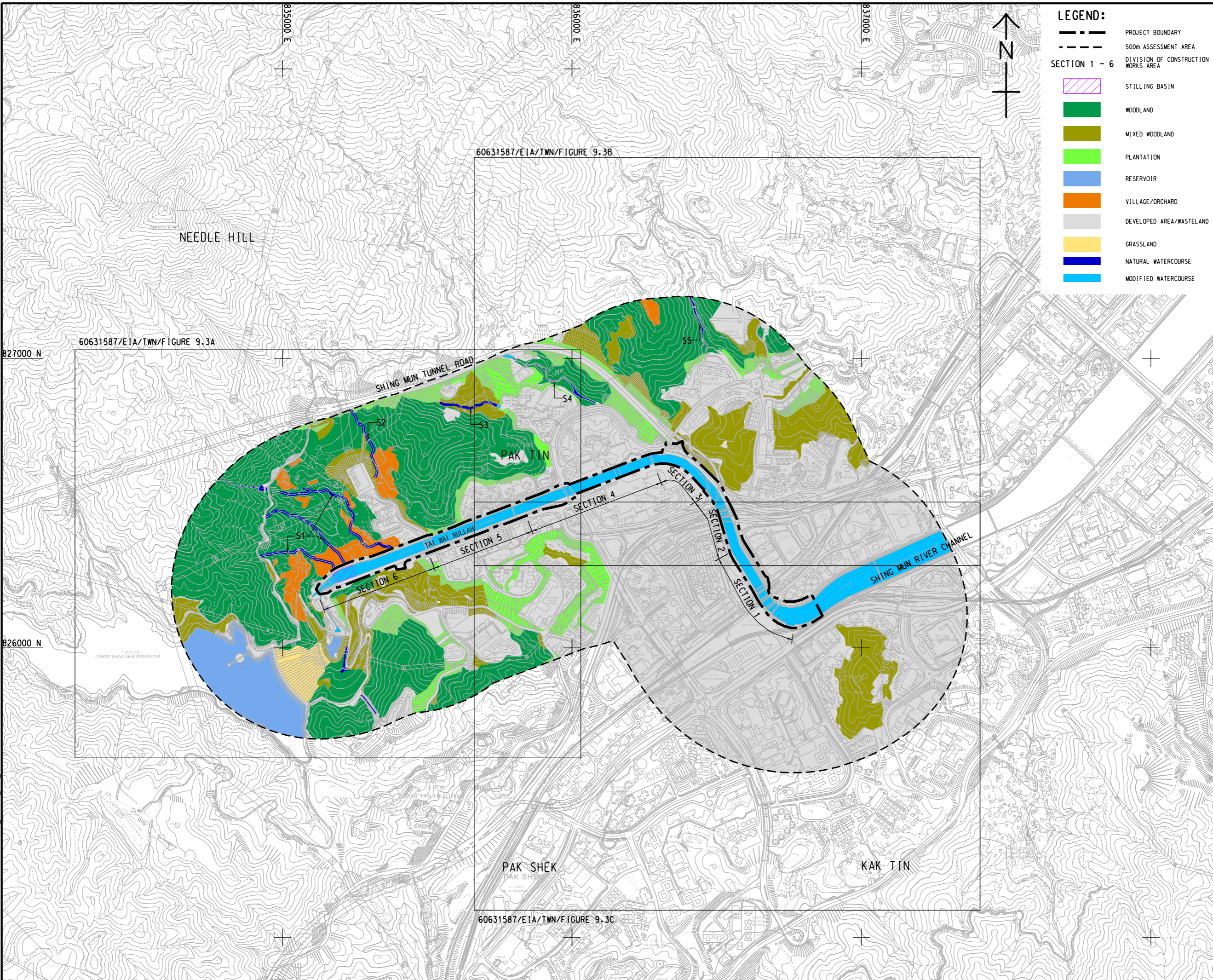


ISO A1 594mm x 841mm  
 Approved:  
 Checked:  
 Designer:  
 Project Management Initials:  
 2022/01/17  
 PATH PROJECTS\60631587\DRAWING\REPORT\EA\_TWN\EA\_TWN\_793.DGN



**LEGEND:**

- PROJECT BOUNDARY
- 500m ASSESSMENT AREA
- SECTION 1 - 6**
- STILLING BASIN
- WOODLAND
- MIXED WOODLAND
- PLANTATION
- RESERVOIR
- VILLAGE/ORCHARD
- DEVELOPED AREA/WASTELAND
- GRASSLAND
- NATURAL WATERCOURSE
- MODIFIED WATERCOURSE

**AECOM**

**PROJECT**  
 項目  
 REVITALISATION OF TAI WAI NULLAH AND FO TAN NULLAH - INVESTIGATION

**CLIENT**  
 客戶  
 渠務署  
 Drainage Services Department

**CONSULTANT**  
 顧問公司  
 AECOM Asia Company Ltd.  
 www.aecom.com

**SUB-CONSULTANTS**  
 分判工程師/公司

**ISSUE/REVISION**  
 修訂

I/R	DATE	DESCRIPTION	CHK.

**STATUS**  
 狀況

**SCALE**  
 比例

A3 1 : 12000

**DIMENSION UNIT**  
 尺寸單位

METRES

**KEY PLAN**  
 索引圖

**PROJECT NO.**  
 項目編號  
 60631587

**AGREEMENT NO.**  
 協議編號  
 CE 54/2019 (DS)

**SHEET TITLE**  
 圖紙名稱  
 HABITAT MAP AND LOCATIONS OF SPECIES OF CONSERVATION IMPORTANCE (KEY PLAN)

**SHEET NUMBER**  
 圖紙編號  
 60631587/EIA/TWN/FIGURE 9.3

This drawing has been prepared for the use of AECOM's client. It may not be used, modified, reproduced or relied upon by third parties, except as agreed by AECOM or as required by law. AECOM accepts no responsibility, and denies any liability whatsoever, to any party that uses or relies on this drawing without AECOM's express written consent. All measurements must be obtained from the stated dimensions.