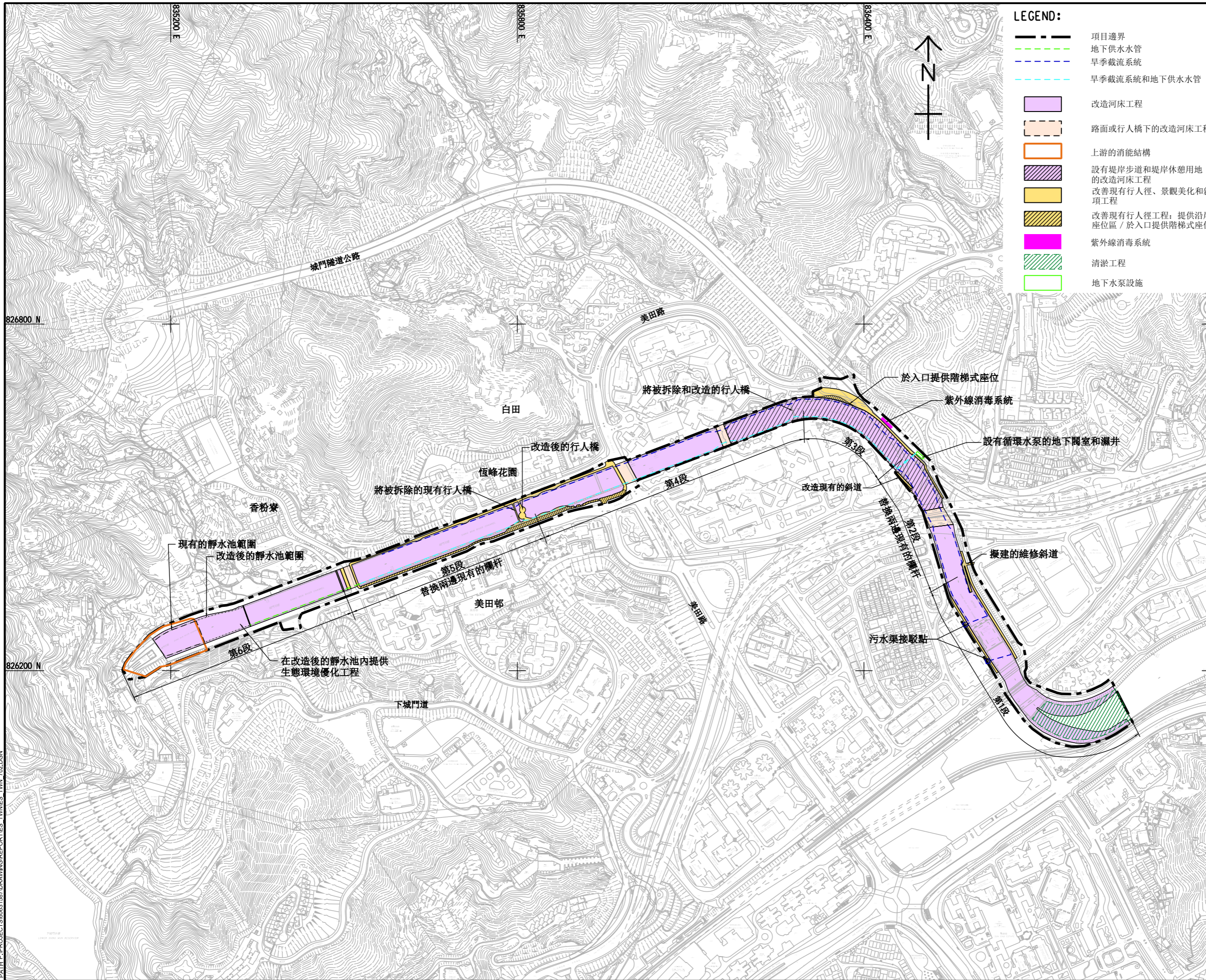


ISO A1 594mm x 841mm
 Approved:
 Checked:
 Designer:
 Project Management Initials:
 2022/10/17
 PATH P-PROJECTS\60631587\DRAWING\REPORTS_TWINES_T\W1_702.DGN



LEGEND:

- 項目邊界
- 地下供水水管
- 旱季截流系統
- 旱季截流系統和地下供水水管
- 改造河床工程
- 路面或行人橋下的改造河床工程
- 上游的消能結構
- 設有堤岸步道和堤岸休憩用地的改造河床工程
- 改善現有行人徑、景觀美化和雜項工程
- 改善現有行人徑工程：提供沿岸座位區 / 於入口提供階梯式座位
- 紫外線消毒系統
- 清淤工程
- 地下水泵設施

AECOM

PROJECT
 活化大圍明渠及火炭明渠
 勘查研究

CLIENT
 渠務署
 Drainage Services Department

CONSULTANT
 AECOM Asia Company Ltd.
 www.aecom.com

SUB-CONSULTANTS
 分列工程顧問公司

ISSUE/REVISION

I/R	DATE	DESCRIPTION	CHK.

STATUS
 初稿

SCALE
 A3 1:6000

DIMENSION UNIT
 METRES 米

KEY PLAN
 索引圖

PROJECT NO.
 項目編號
 60631587

AGREEMENT NO.
 協議編號
 CE 54/2019 (DS)

SHEET TITLE
 圖紙名稱
 大圍明渠活化方案的總佈局圖

SHEET NUMBER
 圖紙編號
 圖2.2

This drawing has been prepared for the use of AECOM's client. It may not be used, modified, reproduced or relied upon by third parties, except as agreed by AECOM or as required by law. AECOM accepts no responsibility, and denies any liability whatsoever, for any part, that less or more than this drawing, without AECOM's express written consent. All measurements must be obtained from the stated dimensions.