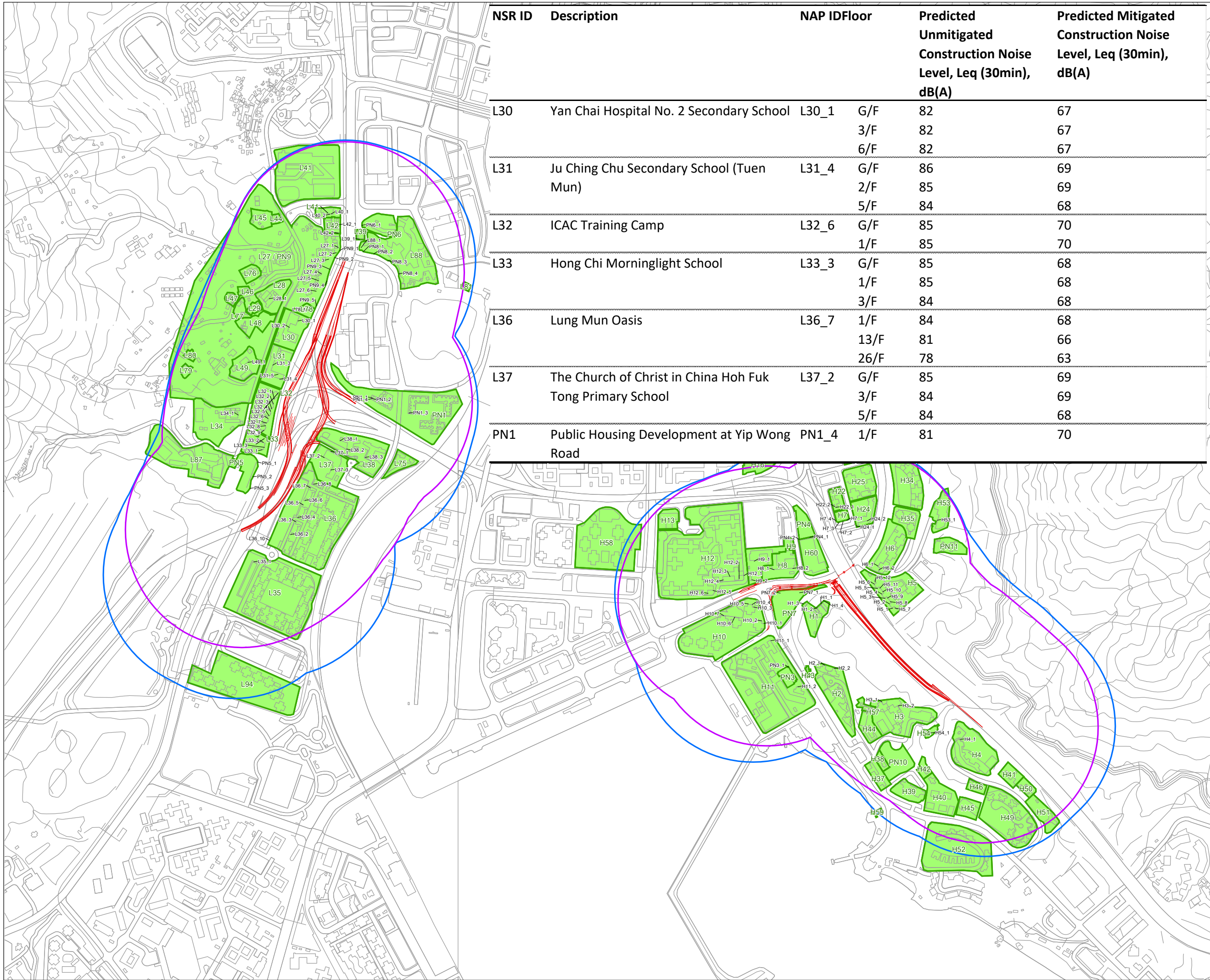




APPENDIX 4.18

PREDICTED CONSTRUCTION NOISE LEVELS AT REPRESENTATIVE FLOOR LEVELS OF SELECTED NAPS



NSR ID	Description	NAP ID	Floor	Predicted Unmitigated Construction Noise Level, Leq (30min), dB(A)	Predicted Mitigated Construction Noise Level, Leq (30min), dB(A)
L30	Yan Chai Hospital No. 2 Secondary School	L30_1	G/F	82	67
			3/F	82	67
			6/F	82	67
L31	Ju Ching Chu Secondary School (Tuen Mun)	L31_4	G/F	86	69
			2/F	85	69
			5/F	84	68
L32	ICAC Training Camp	L32_6	G/F	85	70
			1/F	85	70
L33	Hong Chi Morninglight School	L33_3	G/F	85	68
			1/F	85	68
			3/F	84	68
L36	Lung Mun Oasis	L36_7	1/F	84	68
			13/F	81	66
			26/F	78	63
L37	The Church of Christ in China Hoh Fuk Tong Primary School	L37_2	G/F	85	69
			3/F	84	69
			5/F	84	68
PN1	Public Housing Development at Yip Wong Road	PN1_4	1/F	81	70

- Legend**
- Proposed Development Scheme
 - 300 m Assessment Area (Operation Phase)
 - 300 m Assessment Area (Construction Phase)
 - Noise Sensitive Receivers
 - Representative Noise Assessment Point

Rev	Description	By	Date



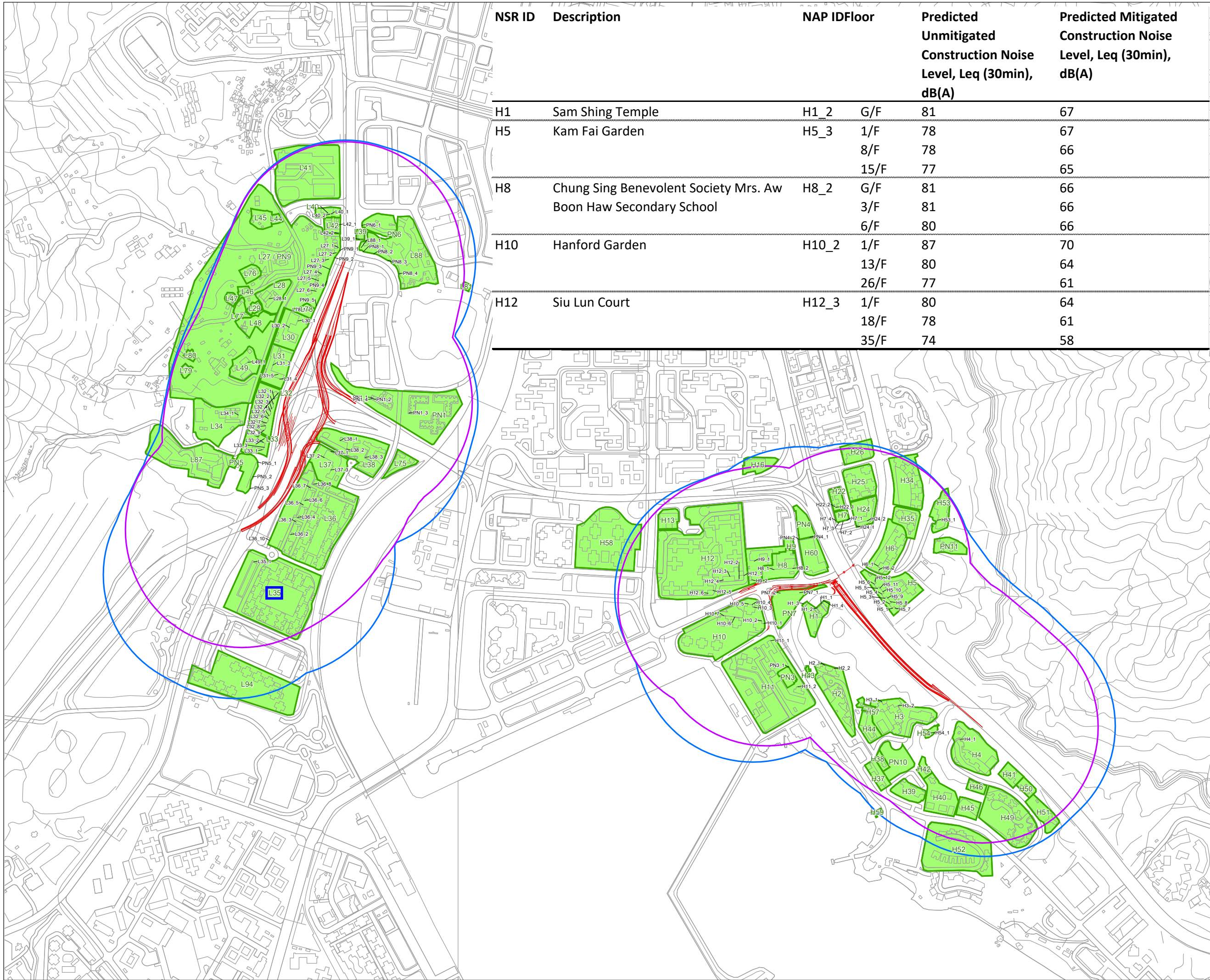
Project Title
 TRAFFIC IMPROVEMENT SCHEME IN TUEN MUN - WIDENING AND ADDITION OF SLIP ROADS AT LUNG FU ROAD/ TUEN MUN ROAD/ WONG CHU ROAD/ HOI WING ROAD

Title
 Predicted Construction Noise Levels at Representative Floor Levels of Selected NAPs (Sheet 1 of 2)

Drawing No. Appendix 4.18		Rev.	
Drawn	Date:	Checked	Approved
Scale	1:9,000 (A3)	Status	

© COPYRIGHT RESERVED

路政署 HIGHWAYS DEPARTMENT
主要工程管理處 (專責事務) MAJOR WORKS PROJECT MANAGEMENT OFFICE (SPECIAL DUTIES)



NSR ID	Description	NAP ID	Floor	Predicted Unmitigated Construction Noise Level, Leq (30min), dB(A)	Predicted Mitigated Construction Noise Level, Leq (30min), dB(A)
H1	Sam Shing Temple	H1_2	G/F	81	67
H5	Kam Fai Garden	H5_3	1/F	78	67
			8/F	78	66
			15/F	77	65
H8	Chung Sing Benevolent Society Mrs. Aw Boon Haw Secondary School	H8_2	G/F	81	66
			3/F	81	66
			6/F	80	66
H10	Hanford Garden	H10_2	1/F	87	70
			13/F	80	64
			26/F	77	61
H12	Siu Lun Court	H12_3	1/F	80	64
			18/F	78	61
			35/F	74	58

Legend

- Proposed Development Scheme
- 300 m Assessment Area (Operation Phase)
- 300 m Assessment Area (Construction Phase)
- Noise Sensitive Receivers
- Representative Noise Assessment Point

Rev	Description	By	Date

Consultant

Project Title
 TRAFFIC IMPROVEMENT SCHEME IN TUEN MUN - WIDENING AND ADDITION OF SLIP ROADS AT LUNG FU ROAD/ TUEN MUN ROAD/ WONG CHU ROAD/ HOI WING ROAD

Title
 Predicted Construction Noise Levels at Representative Floor Levels of Selected NAPs (Sheet 2 of 2)

Drawing No. Appendix 4.18		Rev.	
Drawn	Date:	Checked	Approved
Scale	1:9,000 (A3)	Status	

© COPYRIGHT RESERVED

路政署
HIGHWAYS DEPARTMENT
 主要工程管理處 (專責事務)
MAJOR WORKS PROJECT MANAGEMENT OFFICE (SPECIAL DUTIES)