

AGREEMENT NO. CE 54/2020 (DS)  
DRAINAGE IMPROVEMENT WORKS IN MUI WO –  
INVESTIGATION  
CONTRACT NO. PM 04/2022  
BROAD BRUSH TREE SURVEY IN MUI WO

---

## TREE SURVEY REPORT

5<sup>th</sup> Draft Submission

April 2023

*CLIENT:*  
**DRAINAGE SERVICES DEPARTMENT**

*PREPARED BY:*  
**EARTHASIA LTD.**  
11/F, COFCO Tower,  
262 Gloucester Road,  
Causeway Bay,  
Hong Kong

### Issue and Revision Record

Rev	Date	Prepared By	Certified By	Description
-	Nov 2022	Peggy Leung	Ringo Lee	-

## **TABLE OF CONTENTS**

---

### **SECTION 1 BACKGROUND INFORMATION**

- 1.1 Introduction
- 1.2 Description of the site

### **SECTION 2 TREE SURVEY METHODOLOGY**

- 2.1 General Description of Existing Trees
- 2.2 Tree Survey Methodology
- 2.3 Terms Used in the Tree Survey Schedule

### **APPENDICE:**

- Appendix A – Tree Survey Plan
- Appendix B – Tree Assessment Schedule
- Appendix C – Photographic Record of Tree Groups

## **SECTION 1**

### **BACKGROUND INFORMATION**

---

#### **1.1 Introduction**

Earthasia Limited has been appointed by the Drainage Services Department (DSD) to undertake a Broad-Brush Tree Survey at Mui Wo. Broad-brush approach is adopted for conducting the tree survey to summarize the locations of trees and general conditions of the existing trees within the survey boundary. Key characteristics of tree groups such as dominant tree species, maturity, rarity, and any plant species of conservation interest were identified and recorded. The site location and survey boundary for the Broad-Brush Tree Survey are given in **Appendix A**.

#### **1.2 Description of the site**

The surveyed site is located in Mui Wo and round 50% of the land in Mui Wo is covered in this tree survey boundary. The site is divided into eight parts (namely Tree group 1, 2, 3, 4, 5, 6, 7 and 8), defined by Binnies Hong Kong Limited. Due to the high difficulty of zoning and the massive number of trees in each tree group, each part of the site will not be divided into tree groups with approximate 50 trees in each group.

Mui Wo is surrounded by mountains and sea and the topography of Mui Wo is from west to east (High to low). The surveyed site is an area with different land uses such as forests, highways, cropland, urban, cemeteries and service reservoir, etc.

The northwest of tree group 1 and Tree groups 2, 3, 6, and 7 are high terrain. Most of the tree species are native and have a high density of trees. Also, all the rare and plant species of conservation interest in this tree survey can be found in those tree groups.

Tree groups 1, 4, 5 and 8 have flat terrain and a high degree of development. Tree groups 1,5 and 8 are mainly formed by different fruit trees, for examples *Clausena lansium*, *Dimocarpus longan*, *Litchi chinensis*, *Artocarpus heterophyllus*, etc. and native species. Tree group 4 are the most developed and it is mainly formed by various exotic ornamental trees and a few fruit trees and native tree species.

## SECTION 2 TREE SURVEY METHODOLOGY

### 2.1 General Description of Existing Tree

The tree survey was carried out from late August to late October 2022. There were approximately over 15307 nos. of trees of 176 different species in total. Trees were in general distributed evenly across the surveyed area. Majority of trees were of mature size, medium amenity value, fair health condition and tree form.

Major species include *Acacia confusa*, *Clausena lansium*, *Dimocarpus longan*, *Celtis sinensis*, *Macaranga tanarius var. tomentosa*, *Sterculia lanceolata*, *Litchi chinensis* and *Schefflera heptaphylla*. Around 35% of species identified were native species, occurring in 40% of the total number of the trees surveyed, and there were 2 species of tree or plant of conservation interest which is *Artocarpus hypargyreus* and *Aquilaria sinensis*. Approximately 92 nos. of *Leucaena leucocephala*, which is an undesirable invasive species, were identified in Tree groups 1, 3, 4, 5, 7 and 8. Summary of tree groups and tree species are given in Table 1 and Table 2 in this section. For a detailed broad brush tree survey schedule, please refer to **Appendix B**.

The difficulties and limitations that need to be faced when conducting a tree survey in Mui Wo, as listed below.

**(1) Trees located on private land.** There are many traditional villages within the tree survey boundary. Some areas are private land and fully fenced, such as Yuen's Mansion. Some landowners allow tree surveys on their land, while others do not. The willingness of the landowner will affect the accuracy of tree surveys. **(2) Topography of the surveyed area.** Part of the surveyed areas is higher terrain, such as the northwest of tree group 1 and Tree groups 2, 3, 6, and 7. Also, some slopes are inaccessible more than 40 degrees without any access. The tree surveys can only be done from a distance. Moreover, **(3) Some trees are fully covered by climbers and have no significant characteristics that can be identified.**

Table 1. Summary of tree groups

Tree Group No.	Estimated Quantity of Tree	No. of Species identified	Range of Tree Height (m)
1	3170	85	2-20
2	1968	49	2-21
3	1780	71	3-16
4	1517	86	2-22
5	1750	90	1-14
6	2591	45	2-16
7	2065	60	3-20
8	466	30	4-26

Table 2. Summary of identified tree species

Scientific name	Origin (Native/Exotic)	Estimated Quantity
<i>Acacia auriculiformis</i>	Exotic	24
<i>Acacia confusa</i>	Exotic	1287
<i>Acronychia pedunculata</i>	Native	20
<i>Aglaia odorata</i>	Exotic	1
<i>Aglaia odorata var. microphyllina</i>	Exotic	2

<i>Ailanthus fordii</i>	Native	1
<i>Alangium chinense</i>	Native	364
<i>Albizia lebbeck</i>	Exotic	6
<i>Aleurites moluccanus</i>	Exotic	10
<i>Annona squamosa</i>	Exotic	6
<i>Antidesma bunius</i>	Native	2
<i>Aporosa dioica</i>	Native	223
<i>Aquilaria sinensis</i>	Native	124
<i>Araucaria columnaris</i>	Exotic	54
<i>Araucaria cunninghamii</i>	Exotic	1
<i>Archidendron lucidum</i>	Native	2
<i>Archontophoenix alexandrae</i>	Exotic	120
<i>Artocarpus hypargyreus</i>	Native	46
<i>Artocarpus heterophyllus</i>	Exotic	240
<i>Averrhoa carambola</i>	Exotic	99
<i>Azadirachta indica</i>	Exotic	2
<i>Bauhinia spp.</i>	Exotic	395
<i>Bauhinia x blakeana</i> Dunn	Native	26
<i>Bischofia javanica</i>	Native	9
<i>Bombax ceiba</i>	Exotic	62
<i>Bougainvillea spectabilis</i>	Exotic	2
<i>Bridelia tomentosa</i>	Native	182
<i>Broussonetia papyrifera</i>	Native	2
<i>Callistemon rigidus</i>	Exotic	2
<i>Callistemon viminalis</i>	Exotic	72
<i>Canarium album</i>	Exotic	33
<i>Carica papaya</i>	Exotic	134
<i>Caryota mitis</i>	Exotic	16
<i>Cassia fistula</i>	Exotic	1
<i>Castanopsis fissa</i>	Native	24
<i>Casuarina equisetifolia</i>	Exotic	66
<i>Ceiba speciosa</i>	Exotic	1
<i>Celtis sinensis</i>	Native	894
<i>Cerbera manghas</i>	Exotic	1
<i>Choerospondias axillaris</i>	Native	33
<i>Chukrasia tabularis</i>	Exotic	1
<i>Cinnamomum burmannii</i>	Native	29
<i>Cinnamomum camphora</i>	Native	109
<i>Cinnamomum parthenoxylon</i>	Native	41
<i>Citrus maxima</i>	Exotic	24
<i>Clausena lansium</i>	Exotic	989
<i>Cleistocalyx nervosum</i>	Native	14
<i>Corymbia citriodora</i>	Exotic	9
<i>Crateva unilocularis</i>	Exotic	2
<i>Cratoxylum cochinchinense</i>	Native	57
<i>Dead Tree</i>	Exotic	180
<i>Delonix regia</i>	Exotic	84
<i>Dimocarpus longan</i>	Exotic	935
<i>Diospyros kaki</i>	Exotic	10
<i>Diospyros lotus</i>	Exotic	4
<i>Dracaena spp.</i>	Exotic	2
<i>Dracontomelon duperreanum</i>	Native	13
<i>Dyopsis lutescens</i>	Exotic	11
<i>Elaeocarpus hainanensis</i>	Exotic	1

<i>Elaeocarpus spp.</i>	Exotic	56
<i>Elaeocarpus sylvestris</i>	Native	181
<i>Elaeocarpus rugosus</i>	Exotic	4
<i>Eriobotrya japonica</i>	Exotic	10
<i>Erythrina corallodendron</i>	Exotic	2
<i>Erythrina variegata</i>	Exotic	2
<i>Eucalyptus robusta</i>	Exotic	12
<i>Eucalyptus spp.</i>	Exotic	29
<i>Euphorbia neriifolia</i>	Exotic	3
<i>Eurya nitida</i>	Native	11
<i>Ficus benjamina</i>	Exotic	8
<i>Ficus elastica</i>	Exotic	5
<i>Ficus microcarpa</i>	Exotic	98
<i>Ficus religiosa</i>	Exotic	1
<i>Ficus rumphii</i>	Exotic	1
<i>Ficus subpisocarpa</i>	Exotic	10
<i>Ficus variegata</i>	Exotic	184
<i>Ficus binnendijkii</i>	Exotic	1
<i>Ficus hispida</i>	Exotic	348
<i>Garcinia oblongifolia</i>	Native	4
<i>Garcinia subelliptica</i>	Exotic	29
<i>Glochidion hirsutum</i>	Native	6
<i>Glochidion zeylanicum</i>	Native	8
<i>Grevilla robusta</i>	Exotic	1
<i>Handroanthus chrysotrichus</i>	Exotic	9
<i>Hibiscus tiliaceus</i>	Exotic	305
<i>Ilex asprella</i>	Native	6
<i>Ilex rotunda var. microcarpa</i>	Native	4
<i>Itea chinensis</i>	Native	44
<i>Juniperus chinensis</i>	Exotic	52
<i>Khaya senegalensis</i>	Exotic	1
<i>Lagerstroemia indica</i>	Exotic	1
<i>Lagerstroemia speciosa</i>	Exotic	56
<i>Lepisanthes spp.</i>	Exotic	2
<i>Leucaena leucocephala</i>	Exotic	92
<i>Ligustrum spp.</i>	Exotic	1
<i>Ligustrum sinense</i>	Exotic	48
<i>Liquidambar formosana</i>	Native	3
<i>Litchi chinensis</i>	Exotic	677
<i>Litsea cubeba</i>	Native	82
<i>Litsea glutinosa</i>	Native	162
<i>Litsea monopetala</i>	Native	43
<i>Litsea rotundifolia</i>	Native	188
<i>Livistona chinensis</i>	Exotic	73
<i>Lophostemon confertus</i>	Exotic	2
<i>Macaranga tanarius var. tomentosa</i>	Exotic	800
<i>Machilus chekiangensis</i>	Native	35
<i>Machilus spp.</i>	Exotic	195
<i>Magnolia grandiflora</i>	Exotic	1
<i>Mallotus apelta</i>	Native	2
<i>Mallotus paniculatus</i>	Native	572
<i>Mangifera indica</i>	Exotic	96
<i>Manilkara zapota</i>	Exotic	2

<i>Melaleuca bracteata</i>	Exotic	1
<i>Melaleuca cajuputi subsp. cumingiana</i>	Exotic	70
<i>Melia azedarach</i>	Exotic	4
<i>Melicope pteleifolia</i>	Native	11
<i>Michelia × alba</i>	Exotic	73
<i>Microcos nervosa</i>	Native	453
<i>Moringa oleifera</i>	Exotic	2
<i>Morus alba</i>	Exotic	36
<i>Murraya paniculata</i>	Exotic	2
<i>Ormosia pinnata</i>	Exotic	1
<i>Pandanus tectorius</i>	Exotic	14
<i>Persea americana</i>	Exotic	4
<i>Phoenix dactylifera</i>	Exotic	1
<i>Phoenix roebelenii</i>	Exotic	10
<i>phyllanthus emblica</i>	Native	13
<i>Pinus elliottii</i>	Exotic	9
<i>Pinus massoniana</i>	Native	17
<i>Platyclusus orientalis</i>	Exotic	15
<i>Plumeria rubra</i>	Exotic	10
<i>Podocarpus macrophyllus</i>	Exotic	15
<i>Prunus persica</i>	Exotic	2
<i>Psidium guajava</i>	Exotic	27
<i>Psychotria asiatica</i>	Native	5
<i>Pterocarpus indicus</i>	Exotic	9
<i>Radermachera sinica</i>	Exotic	1
<i>Ravenala madagascariensis</i>	Exotic	18
<i>Reevesia thyrsoidea</i>	Native	3
<i>Rhodomirtus tomentosa</i>	Native	3
<i>Rhus chinensis</i>	Native	11
<i>Roystonea regia</i>	Exotic	71
<i>Sapindus saponaria</i>	Native	16
<i>Sapium sebiferum</i>	Native	173
<i>Schefflera actinophylla</i>	Exotic	7
<i>Schefflera heptaphylla</i>	Native	591
<i>Schima superba</i>	Native	2
<i>Scolopia saeva</i>	Native	15
<i>Senna siamea</i>	Exotic	14
<i>Senna surattensis</i>	Exotic	8
<i>Spathodea campanulata</i>	Exotic	1
<i>Sterculia lanceolata</i>	Native	750
<i>Sterculia monosperma</i>	Native	330
<i>Swietenia macrophylla</i>	Exotic	4
<i>Symplocos lancifolia</i>	Native	71
<i>Syzygium cumini</i>	Exotic	25
<i>Syzygium jambos</i>	Exotic	232
<i>Syzygium levinei</i>	Native	2
<i>Syzygium myrtifolium</i>	Exotic	1
<i>Syzygium nervosum</i>	Native	3
<i>Syzygium samarangense</i>	Exotic	5
<i>Tabebuia chrysantha</i>	Exotic	2
<i>Tamarindus indica</i>	Exotic	3
<i>Terminalia catappa</i>	Exotic	133
<i>Terminalia mantaly</i>	Exotic	16

<i>Tetradium glabrifolium</i>	Native	18
<i>Thevetia peruviana</i>	Exotic	3
<i>Toona sinensis</i>	Native	20
<i>Toxicodendron succedaneu</i>	Native	39
<i>Trachycarpus fortunei</i>	Exotic	1
<i>Trema tomentosa</i>	Native	8
<i>Triadica cochinchinensis</i>	Native	29
<i>Vernicia fordii</i>	Exotic	27
<i>Vernicia montana</i>	Exotic	72
<i>Viburnum odoratissimum</i>	Native	11
<i>Xanthostemon chrysanthus</i>	Exotic	37
<i>Zanthoxylum avicennae</i>	Native	55
<b>Total</b>		<b>15307</b>

## 2.2 Tree Survey Methodology

The Broad-Brush Tree Survey is carried out for all existing trees with trunk base situated within the survey areas. In accordance with Development Bureau Technical Circular (Works) No. 4/2020 – Tree Preservation, all existing trees with a trunk diameter of 95mm or more at a height of 1.3m above ground level are included in the survey. The site was divided into groups and each tree group is assigned with a unique tree group reference number.

The survey findings were presented in a Broad-brush tree survey schedule. References for tree survey methodology and evaluation of surveyed trees were made based on the following technical guidelines and publications:

- Development Bureau Technical Circular (Works) No.6/2015 – Maintenance of Vegetation and Hard Landscape Features;
- Development Bureau Technical Circular (Works) No. 4/2020 – Tree Preservation;
- Development Bureau Technical Circular (Works) No. 5/2020 – Registration of Old and Valuable Trees, and Guidelines for their Preservation;
- Lands Department Practice Note Issue No. 2/2020 – Tree Preservation and Removal Proposal for Building Development in Private Projects Compliance of Tree Preservation Clause under Lease;
- Agriculture, Fisheries and Conservation Department – Check List of Hong Kong Plants 2012;
- Agricultural, Fisheries and Conservation Department, Conservation Branch, Nature Conservation Practice Note No. 02/ June 2006 – Measurement of Diameter at Breast Height (DBH);
- Agriculture, Fisheries and Conservation Department – Rare And Precious Plants of Hong Kong, 2003;
- Hu, Q., et al. 2003. Rare and Precious Plants of Hong Kong, AFCD, Hong Kong;
- LCS D’s Register of Old and Valuable Trees; and
- IUCN Red List of Threatened Species Version 2021-3.

## 2.3 Tree Terms Used in the Tree Survey Schedule

### 2.3.1 Tree Group Number

The unique reference number assigned to each individual tree group. (Please refer to the **Appendix B**)



### **2.3.2 Species**

Scientific names and Chinese names of tree species.

### **2.3.3 Tree Height**

The range of tree height of the surveyed tree species within the tree group from the ground level to the top branch.

### **2.3.4 Overall Health Condition**

Estimate according to the condition of foliage, exposed roots, branches and trunk of the trees

in the group

(G) = Good Without any visible disease or defect, sound and healthy tree

(F) = Fair With few visible defects or health problem

(P) = Poor With many visible defects or health problem such as rot, cavities in the main trunk, insect or fungi attack, lack of vigour and crown die back, etc.

### **2.3.5 Overall Tree Form**

Estimated according to the condition of the canopy, branch and trunk of the trees in the group

(G) = Good Well-balanced canopy and straight strong trunk(s) without any broken branch

(F) = Fair Slightly unbalanced canopy and non-straight trunk(s)

(P) = Poor Heavily leaning, unbalanced canopy misshapen, awkwardly-forked trunk or with any broken branch or trunk

### **2.3.6 Overall Amenity Value**

Amenity value of a tree should be assessed by its functional values for shade, seasonal interest, screening, reduction of pollution and noise and also its fung shui significance, and classified into the following categories

(H) = High Important trees which should be retained by adjusting the design layout accordingly.

(M) = Medium Trees that are desirable to be retained in order to create a pleasant environment, which includes healthy specimens of lesser importance than “High” trees.

(L) = Low Trees that are dead, dying or potentially hazardous and should be Removed.

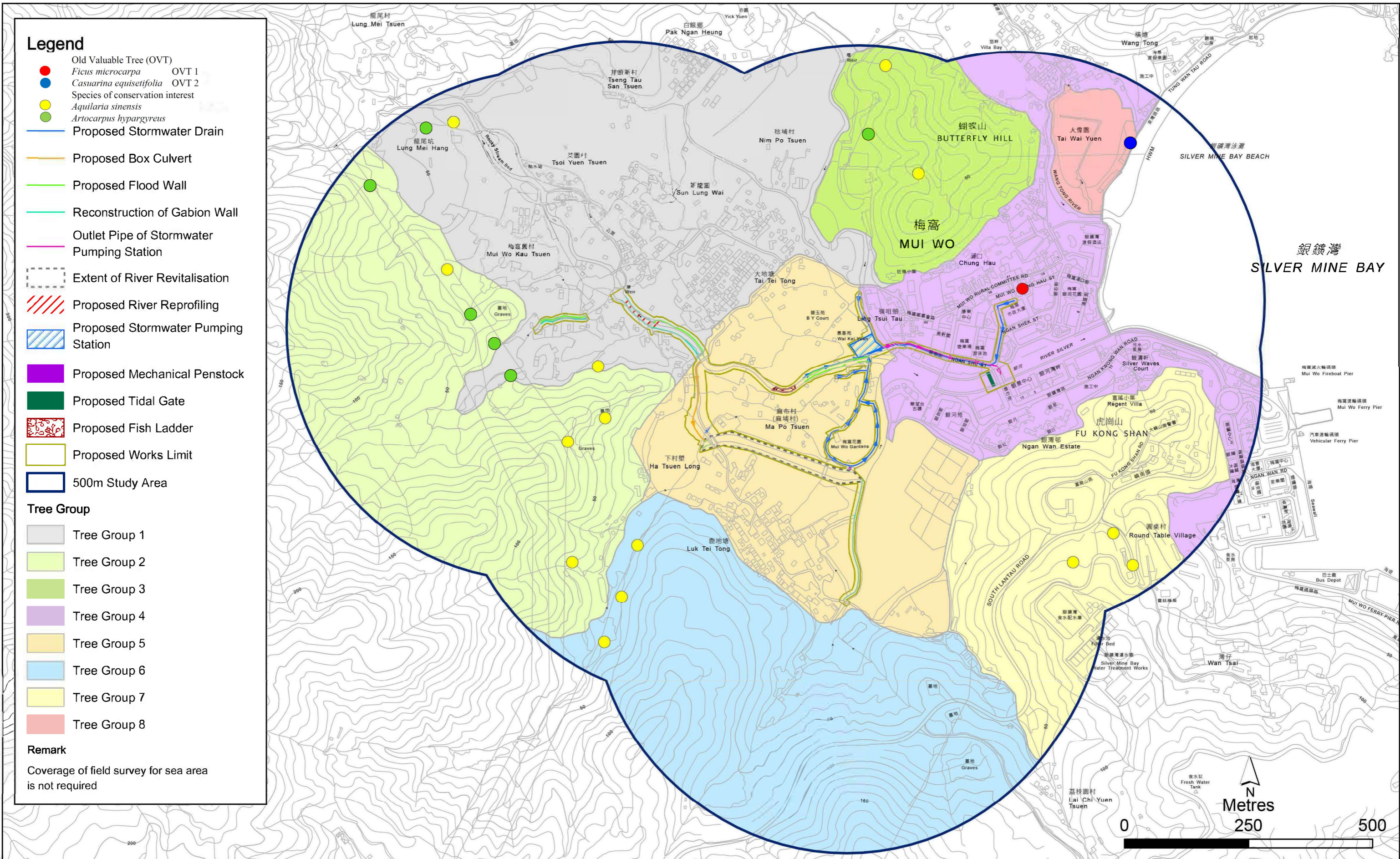
### **2.3.7 Remarks**

Other features and observation of the trees are given in the remarks in **Appendix B - Tree Assessment Schedule**

# APPENDIX A

---

## TREE SURVEY PLAN



Location Plan of Broad Brush Tree Survey  
(Drawing No. 409615/BIN/BTS/001)

# APPENDIX B

---

## TREE SURVEY SCHEDULE

TREE ASSESSMENT SCHEDULE

Contract No. PM 02/2022

Project Title: Broad Brush Tree Survey in Mui Wo (Group 1)

Date of Tree Survey: Late August 2022 to late October 2022

Surveyed by: Peggy Leung (AA-PR5946)

Tree Group Number	Species		Estimated quantity of trees	Range of DBH (mm)		Range of Height (m)		Range of Crown Spread (m)		Typical Health Condition (Good/Fair/Poor)	Typical Tree Form	Typical Amenity Value (High/Medium/Low)	Additional Remarks	Approximate no. of trees in Group
	Scientific name	Chinese name		Min.	Max.	Min.	Max.	Min.	Max.					
Group 1	<i>Acacia confusa</i>	台灣相思	16	100	500	6	14	4	10	Fair	Fair	Medium	-	3170
	<i>Ailanthus fordii</i>	常綠臭椿	1	130	130	12	12	6	6	Fair	Fair	Medium	-	
	<i>Alangium chinense</i>	八角楓	89	95	340	4	9	4	6	Fair	Fair	Medium	-	
	<i>Annona squamosa</i>	番荔枝	2	110	430	4	12	4	8	Fair	Fair	Medium	-	
	<i>Antidesma bunius</i>	五月茶 (五味子)	2	250	380	8	12	6	7	Fair	Fair	Medium	-	
	<i>Aporosa dioica</i>	銀柴	9	190	260	7	8	3	4	Fair	Fair	Medium	-	
	<i>Aquilaria sinensis</i>	土沉香	14	95	140	5	8	2	4	Fair	Fair	High	Rare and Precious Plants of Hong Kong: Near Threatened (NT)	
	<i>Araucaria columnaris</i>	柱狀南洋杉	4	120	210	3	12	3	7	Fair	Fair	Medium	-	
	<i>Araucaria cunninghamii</i>	南洋杉	1	190	190	12	12	6	6	Fair	Fair	Medium	-	
	<i>Archontophoenix alexandrae</i>	假檳榔	11	170	230	7	11	2	4	Fair	Fair	Medium	-	
	<i>Artocarpus hypargyreus</i>	白桂木	10	130	180	5	6	3	4	Fair	Fair	High	Rare and Precious Plants of Hong Kong: Near Threatened (NT)	
	<i>Artocarpus heterophyllus</i>	菠蘿蜜	154	95	450	3	14	4	8	Fair	Fair	Medium	-	
	<i>Averrhoa carambola</i>	楊桃	43	130	380	4	11	2	8	Fair	Fair	Medium	-	
	<i>Bauhinia spp.</i>	羊蹄甲屬	76	95	460	7	11	3	10	Fair	Fair	Medium	-	
	<i>Bischofia javanica</i>	秋楓	7	95	700	6	14	4	8	Fair	Fair	Medium	-	
	<i>Bombax ceiba</i>	木棉	10	95	480	6	15	4	11	Fair	Fair	Medium	-	
	<i>Bridelia tomentosa</i>	土蜜樹 (逼迫仔)	55	110	230	4	11	4	8	Fair	Fair	Medium	-	
	<i>Callistemon rigidus</i>	紅千層	1	380	380	4	4	2	2	Fair	Fair	Medium	-	
	<i>Callistemon viminalis</i>	串錢柳	11	190	300	6	10	2	7	Fair	Fair	Medium	-	
	<i>Carica papaya</i>	番木瓜	45	95	210	4	11	1	3	Fair	Fair	Medium	-	
	<i>Casuarina equisetifolia</i>	木麻黃 (牛尾松)	3	190	640	10	20	6	10	Fair	Fair	Medium	-	
	<i>Celtis sinensis</i>	朴	361	130	1000	5	20	2	14	Fair	Fair	Medium	Mature tree	
	<i>Cinnamomum burmannii</i>	陰香	3	100	130	4	4	2	3	Fair	Fair	Medium	-	
	<i>Cinnamomum camphora</i>	樟	12	95	400	7	11	6	8	Fair	Fair	Medium	-	
	<i>Cinnamomum parthenoxylon</i>	黃樟	2	150	190	9	9	6	6	Fair	Fair	Medium	-	
	<i>Citrus maxima</i>	柚	4	95	140	5	8	3	5	Fair	Fair	Medium	-	
	<i>Clausena lansium</i>	黃皮	545	95	300	4	10	3	8	Fair	Fair	Medium	-	
	<i>Cleistocalyx nervosum</i>	水翁	12	100	280	4	7	3	4	Fair	Fair	Medium	-	
	<i>Corymbia citriodora</i>	檸檬桉	8	330	660	15	20	8	12	Fair	Fair	Medium	-	
	<i>Cratogeomys unilocularis</i>	樹頭菜	2	120	170	5	11	5	6	Fair	Fair	Medium	-	
	<i>Cratogeomys cochinchinense</i>	黃牛木	1	230	230	9	9	4	4	Fair	Fair	Medium	-	
	<i>Dead Tree</i>	死樹	40	120	430	2	14	1	7	Poor	Poor	Low	-	
	<i>Delonix regia</i>	鳳凰木	34	170	600	6	14	6	12	Fair	Fair	Medium	-	
	<i>Dimocarpus longan</i>	龍眼	398	95	570	4	14	4	10	Fair	Fair	Medium	-	
	<i>Diospyros kaki</i>	柿	4	170	230	6	10	3	6	Fair	Fair	Medium	-	
	<i>Dracaena spp.</i>	龍血樹屬	1	130	130	7	7	4	4	Fair	Fair	Medium	-	
	<i>Dracontomelon duperreanum</i>	人面子	1	190	190	9	9	6	6	Fair	Fair	Medium	-	
	<i>Elaeocarpus spp.</i>	杜英屬	15	180	350	9	13	6	7	Fair	Fair	Medium	-	
	<i>Elaeocarpus sylvestris</i>	山杜英	15	95	170	5	8	3	6	Fair	Fair	Medium	-	
	<i>Eriobotrya japonica</i>	枇杷	5	95	170	6	8	4	6	Fair	Fair	Medium	-	
	<i>Eucalyptus spp.</i>	桉屬	2	290	310	8	8	6	6	Fair	Fair	Medium	-	
	<i>Ficus elastica</i>	印度榕	1	740	740	14	14	10	10	Fair	Fair	Medium	-	
	<i>Ficus microcarpa</i>	細葉榕	23	170	750	8	16	6	11	Fair	Fair	Medium	Mature tree	
	<i>Ficus variegata</i>	青果榕	32	120	400	7	12	6	10	Fair	Fair	Medium	-	
	<i>Ficus hispida</i>	對葉榕 (牛乳榕)	71	110	230	4	8	4	8	Fair	Fair	Medium	-	
<i>Glochidion hirsutum</i>	厚葉算盤子	6	95	95	3	3	2	2	Fair	Fair	Medium	-		
<i>Glochidion zeylanicum</i>	香港算盤子	6	280	300	8	10	5	8	Fair	Fair	Medium	-		
<i>Juniperus chinensis</i>	龍柏	19	100	450	4	7	2	6	Fair	Fair	Medium	-		

TREE ASSESSMENT SCHEDULE

Contract No. PM 02/2022

Project Title: Broad Brush Tree Survey in Mui Wo (Group 1)

Date of Tree Survey: Late August 2022 to late October 2022

Surveyed by: Peggy Leung (AA:PR5946)

Tree Group Number	Species		Estimated quantity of trees	Range of DBH (mm)		Range of Height (m)		Range of Crown Spread (m)		Typical Health Condition (Good/Fair/Poor)	Typical Tree Form	Typical Amenity Value (High/Medium/Low)	Additional Remarks	Approximate no. of trees in Group
	Scientific name	Chinese name		Min.	Max.	Min.	Max.	Min.	Max.					
Group 1	<i>Khaya senegalensis</i>	非洲楝(非洲桃花心木)	1	210	210	11	11	8	8	Fair	Fair	Medium	-	3170
	<i>Lagerstroemia speciosa</i>	大花紫薇	4	95	180	4	6	4	6	Fair	Fair	Medium	-	
	<i>Leucaena leucocephala</i>	銀合歡	31	95	210	6	11	2	8	Fair	Fair	Medium	Invasive species	
	<i>Ligustrum sinense</i>	山指甲	4	140	170	6	6	5	6	Fair	Fair	Medium	-	
	<i>Litchi chinensis</i>	荔枝	82	130	450	5	12	3	10	Fair	Fair	Medium	-	
	<i>Litsea glutinosa</i>	潺槁樹	5	95	140	5	8	4	6	Fair	Fair	Medium	-	
	<i>Livistona chinensis</i>	蒲葵	3	170	250	7	8	4	5	Fair	Fair	Medium	-	
	<i>Macaranga tanarius</i> var. <i>tomentosa</i>	血桐	170	95	350	5	12	4	10	Fair	Fair	Medium	-	
	<i>Machilus</i> spp.	潤楠屬	1	390	390	11	11	5	5	Fair	Fair	Medium	-	
	<i>Magnolia grandiflora</i>	荷花玉蘭	1	310	310	6	7	4	4	Fair	Fair	Medium	-	
	<i>Mallotus paniculatus</i>	白楸	135	130	330	6	8	6	8	Fair	Fair	Medium	-	
	<i>Mangifera indica</i>	芒果	26	100	800	4	12	4	8	Fair	Fair	Medium	Mature tree	
	<i>Michelia x alba</i>	白蘭	10	230	380	9	16	4	12	Fair	Fair	Medium	-	
	<i>Microcos nervosa</i>	破布葉(布渣葉)	102	130	280	4	8	3	6	Fair	Fair	Medium	-	
	<i>Morus alba</i>	桑	17	95	370	2	10	2	8	Fair	Fair	Medium	-	
	<i>Murraya paniculata</i>	九里香	2	95	140	3	5	2	3	Fair	Fair	Medium	-	
	<i>Platycladus orientalis</i>	側柏	10	95	230	3	10	2	5	Fair	Fair	Medium	-	
	<i>Plumeria rubra</i>	雞蛋花	2	190	190	5	5	4	4	Fair	Fair	Medium	-	
	<i>Podocarpus macrophyllus</i>	羅漢松	4	120	210	4	8	2	4	Fair	Fair	Medium	-	
	<i>Psidium guajava</i>	番石榴	9	150	250	2	9	1	6	Fair	Fair	Medium	-	
	<i>Psychotria asiatica</i>	山大刀(九節)	5	95	100	4	5	3	4	Fair	Fair	Medium	-	
	<i>Ravenala madagascariensis</i>	旅人蕉	8	200	250	5	7	2	3	Fair	Fair	Medium	-	
	<i>Rhodomyrtus tomentosa</i>	山欖	3	250	310	6	7	3	5	Fair	Fair	Medium	-	
	<i>Roystonea regia</i>	王棕(大王椰子)	16	150	330	7	14	3	6	Fair	Fair	Medium	-	
	<i>Sapindus saponaria</i>	無患子	3	170	270	10	14	8	8	Fair	Fair	Medium	-	
	<i>Sapium sebiferum</i>	烏桕	28	120	280	5	12	3	8	Fair	Fair	Medium	-	
	<i>Schefflera heptaphylla</i>	鵝掌柴(鴨腳木)	42	95	230	5	12	4	8	Fair	Fair	Medium	-	
	<i>Spathodea campanulata</i>	火焰木	1	380	380	12	12	10	10	Fair	Fair	Medium	-	
	<i>Sterculia lanceolata</i>	假蘋婆	99	140	470	5	12	3	10	Fair	Fair	Medium	-	
	<i>Sterculia monosperma</i>	蘋婆	31	95	420	4	12	3	10	Fair	Fair	Medium	-	
	<i>Syzygium cumini</i>	烏墨(海南蒲桃)	7	310	350	12	14	6	7	Fair	Fair	Medium	-	
	<i>Syzygium jambos</i>	蒲桃	54	95	650	5	14	4	12	Fair	Fair	Medium	-	
	<i>Tamarindus indica</i>	酸豆	3	190	280	6	8	6	8	Fair	Fair	Medium	-	
	<i>Terminalia catappa</i>	欖仁樹	7	190	350	8	12	4	10	Fair	Fair	Medium	-	
	<i>Toona sinensis</i>	香椿	8	110	320	8	12	3	10	Fair	Fair	Medium	-	
	<i>Toxicodendron succedaneu</i>	野漆樹(木蠟樹)	1	170	170	9	9	3	3	Fair	Fair	Medium	-	
<i>Vernicia fordii</i>	油桐	12	150	150	6	8	6	6	Fair	Fair	Medium	-		
<i>Vernicia montana</i>	木油樹(木油桐&千年桐)	36	110	190	6	9	4	8	Fair	Fair	Medium	-		

TREE ASSESSMENT SCHEDULE

Contract No. PM 02/2022

Project Title: Broad Brush Tree Survey in Mui Wo (Group 2)

Date of Tree Survey: Late August 2022 to late October 2022

Surveyed by: Peggy Leung (AA:PR5946)

Tree Group Number	Species		Estimated quantity of trees	Range of DBH (mm)		Range of Height (m)		Range of Crown Spread (m)		Typical Health Condition (Good/Fair/Poor)	Typical Tree Form	Typical Amenity Value (High/Medium/Low)	Additional Remarks	Approximate no. of trees in Group
	Scientific name	Chinese name		Min.	Max.	Min.	Max.	Min.	Max.					
Group 2	<i>Acacia confusa</i>	台灣相思	31	150	330	6	10	4	8	Fair	Fair	Medium	-	1968
	<i>Acronychia pedunculata</i>	山油柑	20	130	350	5	12	3	8	Fair	Fair	Medium	-	
	<i>Alangium chinense</i>	八角楓	70	230	420	8	12	6	10	Fair	Fair	Medium	-	
	<i>Aporosa dioica</i>	銀柴	26	150	270	8	10	4	6	Fair	Fair	Medium	-	
	<i>Aquilaria sinensis</i>	土沉香	35	95	250	5	8	3	5	Fair	Fair	High	Rare and Precious Plants of Hong Kong; Near Threatened (NT)	
	<i>Araucaria columnaris</i>	柱狀南洋杉	2	210	210	14	14	3	3	Fair	Fair	Medium	-	
	<i>Artocarpus hypargyreus</i>	白桂木	34	130	210	5	8	3	6	Fair	Fair	High	Rare and Precious Plants of Hong Kong; Near Threatened (NT)	
	<i>Artocarpus heterophyllus</i>	菠蘿蜜	39	150	220	5	7	3	4	Fair	Fair	Medium	-	
	<i>Averrhoa carambola</i>	楊桃	7	130	190	5	8	4	6	Fair	Fair	Medium	-	
	<i>Bridelia tomentosa</i>	土蜜樹 (滿地仔)	46	95	210	4	8	4	6	Fair	Fair	Medium	-	
	<i>Carica papaya</i>	番木瓜	6	95	140	4	8	1	3	Fair	Fair	Medium	-	
	<i>Celtis sinensis</i>	朴	161	150	350	6	10	4	8	Fair	Fair	Medium	-	
	<i>Cinnamomum camphora</i>	樟	42	170	300	6	8	5	6	Fair	Fair	Medium	-	
	<i>Citrus maxima</i>	柚	4	130	150	5	6	3	4	Fair	Fair	Medium	-	
	<i>Clausea lansium</i>	黃皮	152	95	210	4	6	2	4	Fair	Fair	Medium	-	
	Dead Tree	死樹	2	210	280	8	9	4	4	Poor	Poor	Low	-	
	<i>Dimocarpus longan</i>	龍眼	156	95	310	4	8	3	6	Fair	Fair	Medium	-	
	<i>Diospyros kaki</i>	柿	2	150	170	6	6	4	4	Fair	Fair	Medium	-	
	<i>Elaeocarpus sylvestris</i>	山杜英	48	110	170	5	6	2	4	Fair	Fair	Medium	-	
	<i>Eucalyptus spp.</i>	桉屬	20	170	250	6	8	4	6	Fair	Fair	Medium	-	
	<i>Ficus elastica</i>	印度榕	1	650	650	21	21	18	18	Fair	Fair	Medium	-	
	<i>Ficus microcarpa</i>	細葉榕	2	520	1000	12	16	10	22	Fair	Fair	Medium	Mature tree	
	<i>Ficus variegata</i>	青果榕	44	120	220	4	6	3	4	Fair	Fair	Medium	-	
	<i>Ficus hispida</i>	對葉榕 (牛乳榕)	49	110	180	4	6	2	4	Fair	Fair	Medium	-	
	<i>Lagerstroemia indica</i>	紫薇	1	110	110	4	4	1	1	Fair	Fair	Medium	-	
	<i>Litchi chinensis</i>	荔枝	45	120	300	4	8	3	6	Fair	Fair	Medium	-	
	<i>Litsea cubeba</i>	木薑子	18	170	190	5	6	3	4	Fair	Fair	Medium	-	
	<i>Litsea glutinosa</i>	潺槁樹	63	150	230	6	8	3	6	Fair	Fair	Medium	-	
	<i>Litsea rotundifolia</i>	豺皮樟	46	130	170	5	7	3	5	Fair	Fair	Medium	-	
	<i>Macaranga lanarius var. tomentosa</i>	血桐	151	130	250	5	10	3	8	Fair	Fair	Medium	-	
	<i>Machilus spp.</i>	潤楠屬	48	95	190	4	8	2	6	Fair	Fair	Medium	-	
	<i>Mallotus paniculatus</i>	白楸	72	130	250	5	8	4	6	Fair	Fair	Medium	-	
	<i>Mangifera indica</i>	芒果	3	300	420	6	8	4	6	Fair	Fair	Medium	-	
	<i>Michelia x alba</i>	白蘭	12	300	380	9	14	6	8	Fair	Fair	Medium	-	
	<i>Microcos nervosa</i>	破布葉 (布渣葉)	105	130	270	4	8	3	6	Fair	Fair	Medium	-	
	<i>phyllanthus emblica</i>	餘日子	9	95	140	2	4	4	4	Fair	Fair	Medium	-	
	<i>Pinus eliottii</i>	濕地松 (愛氏松)	3	150	150	6	6	5	5	Fair	Fair	Medium	-	
	<i>Psidium guajava</i>	番石榴	3	130	170	5	6	3	4	Fair	Fair	Medium	-	
	<i>Reevesia thyrsoidea</i>	兩廣梭羅 (梭羅樹)	3	95	150	4	4	1	2	Fair	Fair	Medium	-	
	<i>Rhus chinensis</i>	鹽膚木	3	150	190	5	6	4	4	Fair	Fair	Medium	-	
<i>Sapium sebiferum</i>	烏桕	12	120	280	5	8	3	5	Fair	Fair	Medium	-		
<i>Schefflera heptaphylla</i>	鵝掌柴 (鴨腳木)	142	170	290	5	10	3	7	Fair	Fair	Medium	-		
<i>Scolopia saeva</i>	廣東刺柃	2	95	150	4	6	3	4	Fair	Fair	Medium	-		
<i>Sterculia lanceolata</i>	假蒟蒻	107	95	230	5	8	3	5	Fair	Fair	Medium	-		
<i>Sterculia monosperma</i>	蒟蒻	29	95	170	4	8	3	6	Fair	Fair	Medium	-		
<i>Syzygium jambos</i>	蒲桃	53	95	300	5	10	4	8	Fair	Fair	Medium	-		
<i>Tetradium glabrifolium</i>	棟葉吳茱萸	3	150	190	5	6	3	4	Fair	Fair	Medium	-		
<i>Vernicia fordii</i>	油桐	15	130	180	6	8	6	6	Fair	Fair	Medium	-		
<i>Vernicia montana</i>	木油樹 (木油桐 & 千年桐)	13	130	190	6	8	4	6	Fair	Fair	Medium	-		
<i>Zanthoxylum avicennae</i>	筋櫛花椒	8	95	140	3	4	2	4	Fair	Fair	Medium	-		

TREE ASSESSMENT SCHEDULE

Contract No. PM 02/2022

Project Title: Broad Brush Tree Survey in Mui Wo (Group 3)

Date of Tree Survey: Late August 2022 to late October 2022

Surveyed by: Peggy Leung (AA:PR5946)

Tree Group Number	Species		Estimated quantity of trees	Range of DBH (mm)		Range of Height (m)		Range of Crown Spread (m)		Typical Health Condition (Good/Fair/Poor)	Typical Tree Form	Typical Amenity Value (High/Medium/Low)	Additional Remarks	Approximate no. of trees in Group
	Scientific name	Chinese name		Min.	Max.	Min.	Max.	Min.	Max.					
Group 3	<i>Acacia confusa</i>	台灣相思	44	270	650	10	14	6	10	Fair	Fair	Medium	-	1780
	<i>Alangium chinense</i>	八角楓	45	110	170	5	11	2	2	Fair	Fair	Medium	-	
	<i>Aporosa dioica</i>	銀柴	120	95	180	5	8	3	5	Fair	Fair	Medium	-	
	<i>Aquilaria sinensis</i>	土沉香	24	120	390	5	12	3	4	Fair	Fair	High	Rare and Precious Plants of Hong Kong: Near Threatened (NT)	
	<i>Archidendron lucidum</i>	亮葉猴耳環	2	230	230	10	10	6	6	Fair	Fair	Medium	-	
	<i>Artocarpus hypargyreus</i>	白桂木	2	440	440	9	9	4	4	Fair	Fair	High	Rare and Precious Plants of Hong Kong: Near Threatened (NT)	
	<i>Artocarpus heterophyllus</i>	菠蘿蜜	5	130	160	5	7	2	4	Fair	Fair	Medium	-	
	<i>Averrhoa carambola</i>	楊桃	5	110	160	4	6	2	4	Fair	Fair	Medium	-	
	<i>Bauhinia spp.</i>	羊蹄甲屬	18	170	310	6	11	6	10	Fair	Fair	Medium	-	
	<i>Bauhinia x blakeana Dunn</i>	洋紫荊	26	250	400	8	10	4	5	Fair	Fair	Medium	-	
	<i>Bombax ceiba</i>	木棉	3	130	270	5	12	3	8	Fair	Fair	Medium	-	
	<i>Bridelia tomentosa</i>	土蜜樹(瀟泊仔)	11	170	320	5	11	5	8	Fair	Fair	Medium	-	
	<i>Canarium album</i>	橄欖(白欖)	29	220	430	7	12	2	6	Fair	Fair	Medium	-	
	<i>Carica papaya</i>	番木瓜	5	95	190	5	8	1	3	Fair	Fair	Medium	-	
	<i>Castanopsis fissa</i>	裂斗雜栗	3	230	450	9	9	4	8	Fair	Fair	Medium	-	
	<i>Celtis sinensis</i>	朴	37	95	340	6	12	3	8	Fair	Fair	Medium	-	
	<i>Cinnamomum camphora</i>	樟	9	170	410	6	12	4	8	Fair	Fair	Medium	-	
	<i>Cinnamomum parthenoxylon</i>	黃樟	14	150	290	5	8	3	5	Fair	Fair	Medium	-	
	<i>Citrus maxima</i>	柚	3	100	150	4	4	2	2	Fair	Fair	Medium	-	
	<i>Clausena lansium</i>	黃皮	17	95	310	5	8	2	6	Fair	Fair	Medium	-	
	<i>Cratogeomys cochinchinense</i>	黃牛木	31	130	150	5	8	2	3	Fair	Fair	Medium	-	
	<i>Dead Tree</i>	死樹	38	95	350	3	7	1	6	Poor	Poor	Low	-	
	<i>Delonix regia</i>	鳳凰木	1	150	150	8	8	6	6	Fair	Fair	Medium	-	
	<i>Dimocarpus longan</i>	龍眼	58	130	550	6	10	3	6	Fair	Fair	Medium	-	
	<i>Dracontomelon duperraeum</i>	人面子	11	130	400	8	14	6	11	Fair	Fair	Medium	-	
	<i>Elaeocarpus sylvestris</i>	山杜英	7	130	300	6	9	4	4	Fair	Fair	Medium	-	
	<i>Eucalyptus robusta</i>	大葉桉	12	190	500	8	8	2	2	Fair	Fair	Medium	-	
	<i>Eurya nitida</i>	細齒葉柃	11	140	140	4	4	2	2	Fair	Fair	Medium	-	
	<i>Ficus microcarpa</i>	細葉榕	4	180	310	5	12	2	10	Fair	Fair	Medium	-	
	<i>Ficus variegata</i>	青果榕	3	240	280	8	14	4	6	Fair	Fair	Medium	-	
	<i>Ficus hispida</i>	對葉榕(牛乳榕)	12	120	250	4	6	3	6	Fair	Fair	Medium	-	
	<i>Garcinia oblongifolia</i>	黃牙果(嶺南山竹子)	2	160	160	8	8	4	4	Fair	Fair	Medium	-	
	<i>Itea chinensis</i>	老鼠刺	44	130	250	4	9	4	4	Fair	Fair	Medium	-	
	<i>Leucaena leucocephala</i>	銀合歡	7	95	310	6	8	3	6	Fair	Fair	Medium	Invasive species	
	<i>Ligustrum sinense</i>	山指甲	1	95	95	4	4	4	4	Fair	Fair	Medium	-	
	<i>Litchi chinensis</i>	荔枝	76	140	650	6	12	2	9	Fair	Fair	Medium	-	
	<i>Litsea cubeba</i>	木薑子	3	110	150	3	6	2	2	Fair	Fair	Medium	-	
	<i>Litsea monopetala</i>	假柿木薑子	13	130	230	6	9	4	6	Fair	Fair	Medium	-	
	<i>Litsea rotundifolia</i>	豹皮樟	127	100	260	4	7	3	8	Fair	Fair	Medium	-	
	<i>Livistona chinensis</i>	蒲葵	3	180	210	8	10	4	6	Fair	Fair	Medium	-	
<i>Macaranga tanarius var. tomentosa</i>	血桐	61	100	300	5	11	4	8	Fair	Fair	Medium	-		
<i>Machilus chekiangensis</i>	浙江潤楠	35	100	550	6	13	5	5	Fair	Fair	Medium	-		
<i>Machilus spp.</i>	潤楠屬	5	300	450	5	9	2	6	Fair	Fair	Medium	-		
<i>Mallotus apelta</i>	白苧葉	2	100	100	4	4	3	3	Fair	Fair	Medium	-		
<i>Mallotus paniculatus</i>	白楸	116	100	190	5	10	4	7	Fair	Fair	Medium	-		
<i>Mangifera indica</i>	芒果	19	130	300	6	10	4	8	Fair	Fair	Medium	-		
<i>Manilkara zapota</i>	人心果	2	300	300	10	10	7	7	Fair	Fair	Medium	-		
<i>Michelia x alba</i>	白蘭	6	270	340	12	16	3	10	Fair	Fair	Medium	-		
<i>Microcos nervosa</i>	破布葉(布渣葉)	78	130	200	5	10	3	6	Fair	Fair	Medium	-		
<i>Ormosia pinnata</i>	海南紅豆	1	310	310	14	14	8	8	Fair	Fair	Medium	-		
<i>phyllanthus emblica</i>	餘甘子	4	95	250	4	6	2	6	Fair	Fair	Medium	-		
<i>Pinus massoniana</i>	馬尾松	17	360	360	5	7	2	5	Fair	Fair	Medium	-		



**TREE ASSESSMENT SCHEDULE**

Contract No. PM 02/2022

Project Title: Broad Brush Tree Survey in Mui Wo (Group 3)

Date of Tree Survey: Late August 2022 to late October 2022

Surveyed by: Peggy Leung (AA:PR5946)

Tree Group Number	Species		Estimated quantity of trees	Range of DBH (mm)		Range of Height (m)		Range of Crown Spread (m)		Typical Health Condition (Good/Fair/Poor)	Typical Tree Form	Typical Amenity Value (High/Medium/Low)	Additional Remarks	Approximate no. of trees in Group
	Scientific name	Chinese name		Min.	Max.	Min.	Max.	Min.	Max.					
Group 3	<i>Prunus persica</i>	桃	2	130	130	4	4	3	3	Fair	Fair	Medium	-	1780
	<i>Roystonea regia</i>	王棕 (大王椰子)	2	150	230	10	12	4	6	Fair	Fair	Medium	-	
	<i>Sapium sebiferum</i>	烏桕	3	95	230	4	8	2	6	Fair	Fair	Medium	-	
	<i>Schefflera heptaphylla</i>	鵝掌柴 (鴨腳木)	174	130	450	5	10	3	8	Fair	Fair	Medium	-	
	<i>Schima superba</i>	木荷	2	630	630	13	13	9	9	Fair	Fair	Medium	-	
	<i>Scolopia saeva</i>	廣東刺楸	2	180	180	7	7	3	3	Fair	Fair	Medium	-	
	<i>Sterculia lanceolata</i>	假蘋婆	88	95	210	5	8	2	6	Fair	Fair	Medium	-	
	<i>Sterculia monosperma</i>	蘋婆	17	170	270	6	10	4	6	Fair	Fair	Medium	-	
	<i>Symplocos lancifolia</i>	光葉山欖	71	120	200	5	9	4	4	Fair	Fair	Medium	-	
	<i>Syzygium cumini</i>	烏墨 (海南蒲桃)	6	270	310	10	12	8	10	Fair	Fair	Medium	-	
	<i>Syzygium jambos</i>	蒲桃	103	110	480	5	9	4	10	Fair	Fair	Medium	-	
	<i>Syzygium levinei</i>	山蒲桃	2	150	150	8	8	3	3	Fair	Fair	Medium	-	
	<i>Syzygium nervosum</i>	水翁蒲桃	3	340	340	8	8	5	5	Fair	Fair	Medium	-	
	<i>Tetradium glabrifolium</i>	棟葉吳茱萸	7	150	260	6	7	3	4	Fair	Fair	Medium	-	
	<i>Toxicodendron succedaneu</i>	野漆樹 (木蠟樹)	17	130	150	5	8	3	3	Fair	Fair	Medium	-	
	<i>Trema tomentosa</i>	山黃麻	5	95	170	6	6	4	8	Fair	Fair	Medium	-	
	<i>Viburnum odoratissimum</i>	珊瑚樹	11	100	190	6	11	6	10	Fair	Fair	Medium	-	
	<i>Ilex asprella</i>	梅葉冬青 (秤星樹)	6	120	140	5	6	3	3	Fair	Fair	Medium	-	
	<i>Triadica cochinchinensis</i>	山烏桕	8	190	300	8	9	3	4	Fair	Fair	Medium	-	
	<i>Zanthoxylum avicennae</i>	荊欖花椒	19	95	150	5	7	3	3	Fair	Fair	Medium	-	

TREE ASSESSMENT SCHEDULE

Contract No. PM 02/2022

Project Title: Broad Brush Tree Survey in Mui Wo (Group 4)

Date of Tree Survey: Late August 2022 to late October 2022

Surveyed by: Peggy Leung (AA:PR5946)

Tree Group Number	Species		Estimated quantity of trees	Range of DBH (mm)		Range of Height (m)		Range of Crown Spread (m)		Typical Health Condition (Good/Fair/Poor)	Typical Tree Form	Typical Amenity Value (High/Medium/Low)	Additional Remarks	Approximate no. of trees in Group
	Scientific name	Chinese name		Min.	Max.	Min.	Max.	Min.	Max.					
Group 4	<i>Acacia auriculiformis</i>	耳果相思	3	130	230	7	9	4	5	Fair	Fair	Medium	-	1517
	<i>Acacia confusa</i>	台灣相思	84	160	600	6	12	4	7	Fair	Fair	Medium	-	
	<i>Aglaia odorata</i>	米仔蘭	1	170	170	6	6	3	3	Fair	Fair	Medium	-	
	<i>Alangium chinense</i>	八角楓	4	130	250	5	7	3	4	Fair	Fair	Medium	-	
	<i>Albizia lebeck</i>	大葉合歡	6	160	360	6	12	4	8	Fair	Fair	Medium	-	
	<i>Aleurites moluccanus</i>	石栗	6	250	470	10	11	6	8	Fair	Fair	Medium	-	
	<i>Aporosa dioica</i>	銀柴	2	150	180	5	6	3	3	Fair	Fair	Medium	-	
	<i>Araucaria columnaris</i>	柱狀南洋杉	37	100	480	8	12	2	4	Fair	Fair	Medium	-	
	<i>Archontophoenix alexandrae</i>	假檳榔	103	110	280	6	13	1	5	Fair	Fair	Medium	-	
	<i>Artocarpus heterophyllus</i>	菠蘿蜜	13	100	430	5	10	4	6	Fair	Fair	Medium	-	
	<i>Averrhoa carambola</i>	楊桃	7	100	210	4	8	3	6	Fair	Fair	Medium	-	
	<i>Bauhinia spp.</i>	羊蹄甲屬	57	100	320	4	8	2	5	Fair	Fair	Medium	-	
	<i>Bombax ceiba</i>	木棉	38	140	970	5	12	3	8	Fair	Fair	Medium	Mature tree	
	<i>Bougainvillea spectabilis</i>	葉子花 (籐杜鵑)	2	120	140	3	4	3	3	Fair	Fair	Medium	-	
	<i>Bridelia tomentosa</i>	土蜜樹 (逼迫仔)	4	140	150	4	6	3	5	Fair	Fair	Medium	-	
	<i>Callistemon viminalis</i>	串錢柳	19	100	700	3	10	2	9	Fair	Fair	Medium	-	
	<i>Carica papaya</i>	番木瓜	20	110	190	4	10	1	2	Fair	Fair	Medium	-	
	<i>Caryota mitis</i>	短穗魚尾葵	11	100	200	4	7	2	2	Fair	Fair	Medium	-	
	<i>Casuarina equisetifolia</i>	木麻黃 (牛尾松)	35	130	520	8	14	4	6	Fair	Fair	Medium	-	
	<i>Ceiba speciosa</i>	絲木棉 (美人樹)	1	380	380	10	10	5	5	Fair	Fair	Medium	-	
	<i>Celtis sinensis</i>	朴	34	110	510	5	8	4	8	Fair	Fair	Medium	-	
	<i>Cerbera manghas</i>	海芒果	1	210	210	7	7	4	4	Fair	Fair	Medium	-	
	<i>Cinnamomum burmannii</i>	陰香	10	110	350	4	8	2	7	Fair	Fair	Medium	-	
	<i>Cinnamomum camphora</i>	樟	12	100	600	3	13	2	10	Fair	Fair	Medium	-	
	<i>Citrus maxima</i>	柚	1	130	130	3	3	3	3	Fair	Fair	Medium	-	
	<i>Clausena lansium</i>	黃皮	65	120	220	4	7	3	4	Fair	Fair	Medium	-	
	Dead Tree	死樹	20	110	330	3	6	1	4	Poor	Poor	Low	-	
	<i>Delonix regia</i>	鳳凰木	12	290	520	8	10	6	9	Fair	Fair	Medium	-	
	<i>Dimocarpus longan</i>	龍眼	84	120	460	5	12	3	6	Fair	Fair	Medium	-	
	<i>Dracaena spp.</i>	龍血樹屬	1	130	130	7	7	4	4	Fair	Fair	Medium	-	
	<i>Dyopsis lutescens</i>	散尾葵	3	100	140	6	7	2	3	Fair	Fair	Medium	-	
	<i>Elaeocarpus hainanensis</i>	水石榕	1	100	100	3	3	2	2	Fair	Fair	Medium	-	
	<i>Elaeocarpus rugosus</i>	毛果杜英	4	120	210	7	8	2	3	Fair	Fair	Medium	-	
	<i>Elaeocarpus spp.</i>	杜英屬	1	160	160	7	7	4	4	Fair	Fair	Medium	-	
<i>Eriobotrya japonica</i>	枇杷	1	100	100	5	5	3	3	Fair	Fair	Medium	-		
<i>Erythrina corallodendron</i>	龍牙花	2	280	300	5	5	2	3	Fair	Fair	Medium	-		
<i>Ficus benjamina</i>	垂葉榕	6	200	460	8	10	5	8	Fair	Fair	Medium	-		
<i>Ficus elastica</i>	印度榕	2	140	1050	6	12	4	7	Fair	Fair	Medium	Mature tree		
<i>Ficus microcarpa*</i>	細葉榕*	29	100	1430	5	22	3	28	Fair	Fair	Medium	One number of OVT (Registration No: LCSD IS/2) has been observed at Mui Wo Chung Hau Street.		
<i>Ficus religiosa</i>	菩提樹	1	880	880	10	10	12	12	Fair	Fair	Medium	Mature tree		
<i>Ficus rumphii</i>	心葉榕 (假菩提樹)	1	370	370	11	11	6	6	Fair	Fair	Medium	-		

TREE ASSESSMENT SCHEDULE

Contract No. PM 02/2022

Project Title: Broad Brush Tree Survey in Mui Wo (Group 4)

Date of Tree Survey: Late August 2022 to late October 2022

Surveyed by: Peggy Leung (AA:PR5946)

Tree Group Number	Species		Estimated quantity of trees	Range of DBH (mm)		Range of Height (m)		Range of Crown Spread (m)		Typical Health Condition (Good/Fair/Poor)	Typical Tree Form	Typical Amenity Value (High/Medium/Low)	Additional Remarks	Approximate no. of trees in Group
	Scientific name	Chinese name		Min.	Max.	Min.	Max.	Min.	Max.					
Group 4	<i>Ficus subpilocarpa</i>	筆管榕	4	120	320	4	6	3	7	Fair	Fair	Medium	-	1517
	<i>Ficus binnendijkii</i>	阿里垂榕	1	210	210	7	7	5	5	Fair	Fair	Medium	-	
	<i>Ficus variegata</i>	青果榕	4	130	310	6	11	4	6	Fair	Fair	Medium	-	
	<i>Ficus hispida</i>	對葉榕 (牛乳榕)	15	100	220	3	7	3	4	Fair	Fair	Medium	-	
	<i>Garcinia subelliptica</i>	菲島福木	29	95	110	4	5	1	2	Fair	Fair	Medium	-	
	<i>Handroanthus chrysotrichus</i>	金風鈴木	9	95	110	4	5	2	3	Fair	Fair	Medium	-	
	<i>Hibiscus liliaceus</i>	黃槿	52	130	520	4	10	3	8	Fair	Fair	Medium	-	
	<i>Juniperus chinensis</i>	龍柏	18	110	180	3	6	2	3	Fair	Fair	Medium	-	
	<i>Lagerstroemia speciosa</i>	大花紫薇	51	100	210	3	7	2	5	Fair	Fair	Medium	-	
	<i>Leucaena leucocephala</i>	銀合歡	14	100	230	6	8	3	4	Fair	Fair	Medium	Invasive species	
	<i>Ligustrum spp.</i>	女楨屬	1	150	150	6	6	3	3	Fair	Fair	Medium	-	
	<i>Ligustrum sinense</i>	山指甲	22	95	160	5	6	1	2	Fair	Fair	Medium	-	
	<i>Litchi chinensis</i>	荔枝	31	120	270	4	12	3	8	Fair	Fair	Medium	-	
	<i>Litsea glutinosa</i>	潺槁樹	18	140	350	5	10	3	8	Fair	Fair	Medium	-	
	<i>Livistona chinensis</i>	蒲葵	52	95	280	2	8	2	3	Fair	Fair	Medium	-	
	<i>Macaranga tanarius</i> var. <i>tomentosa</i>	血桐	55	120	470	3	9	2	8	Fair	Fair	Medium	-	
	<i>Mallotus paniculatus</i>	白楸	7	120	200	5	7	4	5	Fair	Fair	Medium	-	
	<i>Mangifera indica</i>	芒果	12	110	440	5	12	4	10	Fair	Fair	Medium	-	
	<i>Melaleuca cajuputi</i> subsp. <i>cumingiana</i>	白千層	66	160	970	5	12	3	8	Fair	Fair	Medium	Mature tree	
	<i>Michelia × alba</i>	白蘭	15	180	320	6	12	3	8	Fair	Fair	Medium	-	
	<i>Microcos nervosa</i>	破布葉 (布渣葉)	10	130	380	4	10	3	6	Fair	Fair	Medium	-	
	<i>Morus alba</i>	桑	6	120	270	6	8	2	5	Fair	Fair	Medium	-	
	<i>Phoenix roebelenii</i>	江邊刺葵 (日本葵)	10	110	120	3	6	1	3	Fair	Fair	Medium	-	
	<i>Platycladus orientalis</i>	側柏	1	270	270	10	10	3	4	Fair	Fair	Medium	-	
	<i>Plumeria rubra</i>	雞蛋花	2	100	200	5	8	3	6	Fair	Fair	Medium	-	
	<i>Podocarpus macrophyllus</i>	羅漢松	11	120	230	4	6	2	4	Fair	Fair	Medium	-	
	<i>Psidium guajava</i>	番石榴	6	100	220	5	8	2	6	Fair	Fair	Medium	-	
	<i>Pterocarpus indicus</i>	紫檀	9	130	230	9	11	4	7	Fair	Fair	Medium	-	
	<i>Ravenala madagascariensis</i>	旅人蕉	2	120	150	5	7	2	2	Fair	Fair	Medium	-	
	<i>Roystonea regia</i>	王棕 (大王椰子)	51	130	410	8	19	2	5	Fair	Fair	Medium	-	
	<i>Sapindus saponaria</i>	無患子	5	130	270	7	12	4	6	Fair	Fair	Medium	-	
	<i>Sapium sebiferum</i>	烏桕	8	100	140	5	6	2	4	Fair	Fair	Medium	-	
	<i>Schefflera actinophylla</i>	傘樹 (澳洲鴨腳木)	5	100	260	6	9	2	5	Fair	Fair	Medium	-	
	<i>Schefflera heptaphylla</i>	鵝掌柴 (鴨腳木)	4	170	230	5	6	3	5	Fair	Fair	Medium	-	
	<i>Senna siamea</i>	鐵刀木	6	270	520	8	14	5	10	Fair	Fair	Medium	-	
	<i>Senna surattensis</i>	黃槐決明 (黃槐)	8	100	130	4	5	3	4	Fair	Fair	Medium	-	
	<i>Sterculia lanceolata</i>	假蘋婆	16	130	470	4	7	3	5	Fair	Fair	Medium	-	
	<i>Sterculia monosperma</i>	蘋婆	2	200	330	7	8	4	6	Fair	Fair	Medium	-	
	<i>Syzygium cumini</i>	烏墨 (海南蒲桃)	10	350	370	8	9	5	6	Fair	Fair	Medium	-	
	<i>Syzygium jambos</i>	蒲桃	8	100	330	5	9	4	6	Fair	Fair	Medium	-	
<i>Syzygium samarangense</i>	洋蒲桃	4	430	540	7	11	6	12	Fair	Fair	Medium	-		
<i>Xanthostemon chrysanthus</i>	金蒲桃	37	100	130	4	6	2	3	Fair	Fair	Medium	-		
<i>Terminalia catappa</i>	欖仁樹	65	160	400	5	9	3	8	Fair	Fair	Medium	-		
<i>Terminalia mantaly</i>	小葉欖仁	7	130	220	11	12	4	5	Fair	Fair	Medium	-		
<i>Thevetia peruviana</i>	黃花夾竹桃	3	120	170	6	7	1	2	Fair	Fair	Medium	-		
<i>Trachycarpus fortunei</i>	棕櫚	1	100	100	2	2	1	1	Fair	Fair	Medium	-		

TREE ASSESSMENT SCHEDULE

Contract No. PM 02/2022

Project Title: Broad Brush Tree Survey in Mui Wo (Group 5)

Date of Tree Survey: Late August 2022 to late October 2022

Surveyed by: Peggy Leung (AA:PR5946)

Tree Group Number	Species		Estimated quantity of trees	Range of DBH (mm)		Range of Height (m)		Range of Crown Spread (m)		Typical Health Condition (Good/Fair/Poor)	Typical Tree Form	Typical Amenity Value (High/Medium/Low)	Additional Remarks	Approximate no. of trees in Group
	Scientific name	Chinese name		Min.	Max.	Min.	Max.	Min.	Max.					
Group 5	<i>Acacia auriculiformis</i>	耳果相思	1	170	170	7	7	5	5	Fair	Fair	Medium	-	1750
	<i>Acacia confusa</i>	台灣相思	51	130	540	4	12	3	8	Fair	Fair	Medium	-	
	<i>Agliaia odorata var. microphyllina</i>	小葉米仔蘭	2	110	110	4	6	4	5	Fair	Fair	Medium	-	
	<i>Alangium chinense</i>	八角楓	4	110	250	4	7	1	4	Fair	Fair	Medium	-	
	<i>Annona squamosa</i>	番荔枝	4	110	160	4	5	2	5	Fair	Fair	Medium	-	
	<i>Aporosa dioica</i>	銀柴	4	140	230	5	6	3	4	Fair	Fair	Medium	-	
	<i>Araucaria columnaris</i>	柱狀南洋杉	9	110	500	7	14	2	5	Fair	Fair	Medium	-	
	<i>Archontophoenix alexandrae</i>	假檳榔	5	150	180	7	10	2	2	Fair	Fair	Medium	-	
	<i>Artocarpus heterophyllus</i>	菠蘿蜜	23	120	530	5	12	3	12	Fair	Fair	Medium	-	
	<i>Averrhoa carambola</i>	楊桃	29	100	300	3	11	2	8	Fair	Fair	Medium	-	
	<i>Azadirachta indica</i>	印度苦楝樹	2	140	190	4	5	4	4	Fair	Fair	Medium	-	
	<i>Bauhinia spp.</i>	羊蹄甲屬	200	120	300	4	8	3	7	Fair	Fair	Medium	-	
	<i>Bischofia javanica</i>	秋楓	2	170	220	5	6	4	4	Fair	Fair	Medium	-	
	<i>Bombax ceiba</i>	木棉	4	140	270	6	10	2	4	Fair	Fair	Medium	-	
	<i>Bridelia tomentosa</i>	土蜜樹(滿地仔)	12	110	270	2	8	3	6	Fair	Fair	Medium	-	
	<i>Callistemon rigidus</i>	紅千層	1	100	100	4	4	4	4	Fair	Fair	Medium	-	
	<i>Callistemon viminalis</i>	串錢柳	42	170	450	5	10	4	7	Fair	Fair	Medium	-	
	<i>Canarium album</i>	橄欖(白欖)	1	150	150	6	6	2	2	Fair	Fair	Medium	-	
	<i>Carica papaya</i>	番木瓜	27	100	220	4	7	1	3	Fair	Fair	Medium	-	
	<i>Cassia fistula</i>	臘腸樹(豬腸豆)	1	140	140	5	5	2	2	Fair	Fair	Medium	-	
	<i>Celtis sinensis</i>	朴	165	120	1100	4	12	3	16	Fair	Fair	Medium	Mature tree	
	<i>Chukrasia tabularis</i>	麻楝	1	100	100	5	5	3	3	Fair	Fair	Medium	-	
	<i>Cinnamomum burmannii</i>	陰香	8	140	450	5	8	3	6	Fair	Fair	Medium	-	
	<i>Cinnamomum camphora</i>	樟	13	160	530	5	12	6	12	Fair	Fair	Medium	-	
	<i>Citrus maxima</i>	柚	10	120	380	3	8	2	6	Fair	Fair	Medium	-	
	<i>Clauseria lansium</i>	黃皮	175	150	310	3	8	2	5	Fair	Fair	Medium	-	
	<i>Cleistocalyx nervosum</i>	水翁	2	280	530	10	10	4	12	Fair	Fair	Medium	-	
	Dead Tree	死樹	15	110	200	1	8	2	4	Poor	Poor	Low	-	
	<i>Delonix regia</i>	鳳凰木	11	200	520	8	11	4	8	Fair	Fair	Medium	-	
	<i>Dimocarpus longan</i>	龍眼	104	140	580	5	12	3	10	Fair	Fair	Medium	-	
	<i>Diospyros lotus</i>	雞心柿	4	140	310	4	9	4	5	Fair	Fair	Medium	-	
	<i>Diospyros kaki</i>	柿	4	110	310	4	10	4	8	Fair	Fair	Medium	-	
	<i>Dracontomelon duperreanum</i>	人面子	1	290	290	7	7	4	4	Fair	Fair	Medium	-	
	<i>Dyopsis lutescens</i>	散尾葵	8	100	190	6	8	2	3	Fair	Fair	Medium	-	
	<i>Eriobotrya japonica</i>	枇杷	4	120	240	5	10	2	6	Fair	Fair	Medium	-	
	<i>Erythrina variegata</i>	刺桐	2	500	550	9	10	5	7	Fair	Fair	Medium	-	
	<i>Euphorbia nerifolia</i>	金剛纂	3	130	150	3	6	2	3	Fair	Fair	Medium	-	
	<i>Ficus benjamina</i>	垂葉榕	1	660	660	11	11	10	10	Fair	Fair	Medium	-	
	<i>Ficus elastica</i>	印度榕	1	1200	1200	9	9	7	7	Fair	Fair	Medium	Mature tree	
	<i>Ficus microcarpa</i>	細葉榕	35	100	1700	5	14	2	14	Fair	Fair	Medium	Mature tree	
	<i>Ficus subspicarpa</i>	筆管榕	1	270	270	5	5	6	6	Fair	Fair	Medium	-	
	<i>Ficus variegata</i>	青果榕	6	130	300	2	11	2	6	Fair	Fair	Medium	-	
	<i>Ficus hispida</i>	對葉榕(牛乳榕)	78	130	400	3	8	3	8	Fair	Fair	Medium	-	
	<i>Glochidion zeylanicum</i>	香港舞盤子	2	180	290	4	5	3	6	Fair	Fair	Medium	-	
	<i>Grevilla robusta</i>	銀樟	1	170	170	6	6	2	2	Fair	Fair	Medium	-	
	<i>Hibiscus tiliaceus</i>	黃槿	22	120	310	2	5	3	6	Fair	Fair	Medium	-	
	<i>Juniperus chinensis</i>	龍柏	15	120	350	2	8	2	5	Fair	Fair	Medium	-	
	<i>Lepisanthes spp.</i>	赤才屬	2	130	330	5	10	3	6	Fair	Fair	Medium	-	
	<i>Leucaena leucocephala</i>	銀合歡	37	110	280	7	10	3	6	Fair	Fair	Medium	Invasive species	
	<i>Ligustrum sinense</i>	山指甲	10	110	320	4	7	3	7	Fair	Fair	Medium	-	
<i>Liquidambar formosana</i>	楓香	3	130	260	6	8	4	6	Fair	Fair	Medium	-		
<i>Litchi chinensis</i>	荔枝	72	110	550	4	12	2	10	Fair	Fair	Medium	-		
<i>Litsea glutinosa</i>	潺槁樹	16	110	300	4	8	3	4	Fair	Fair	Medium	-		
<i>Litsea monopetala</i>	假柿木薑子	3	130	540	6	12	3	8	Fair	Fair	Medium	-		
<i>Livistona chinensis</i>	蒲葵	8	220	340	7	11	3	4	Fair	Fair	Medium	-		
<i>Macaranga tanarius var. tomentosa</i>	血桐	91	130	430	4	10	2	10	Fair	Fair	Medium	-		

**TREE ASSESSMENT SCHEDULE**

Contract No. PM 02/2022

Project Title: Broad Brush Tree Survey in Mui Wo (Group 5)

Date of Tree Survey: Late August 2022 to late October 2022

Surveyed by: Peggy Leung (AA:PR5946)

Tree Group Number	Species		Estimated quantity of trees	Range of DBH (mm)		Range of Height (m)		Range of Crown Spread (m)		Typical Health Condition (Good/Fair/Poor)	Typical Tree Form	Typical Amenity Value (High/Medium/Low)	Additional Remarks	Approximate no. of trees in Group
	Scientific name	Chinese name		Min.	Max.	Min.	Max.	Min.	Max.					
Group 5	<i>Mallotus paniculatus</i>	白楸	49	110	230	4	7	3	7	Fair	Fair	Medium	-	1750
	<i>Mangifera indica</i>	芒果	32	100	550	5	10	2	8	Fair	Fair	Medium	-	
	<i>Melaleuca bracteata</i>	黃金香柳	1	220	220	8	8	5	5	Fair	Fair	Medium	-	
	<i>Melaleuca cajuputi</i> subsp. <i>cumingiana</i>	白千層	4	480	700	11	12	6	7	Fair	Fair	Medium	-	
	<i>Melia azedarach</i>	苦楝	1	220	220	9	9	6	6	Fair	Fair	Medium	-	
	<i>Michelia × alba</i>	白蘭	25	130	580	6	14	4	10	Fair	Fair	Medium	-	
	<i>Microcos nervosa</i>	破布葉 (布渣葉)	19	120	240	4	10	3	7	Fair	Fair	Medium	-	
	<i>Moringa oleifera</i>	辣木	2	170	230	6	6	3	4	Fair	Fair	Medium	-	
	<i>Morus alba</i>	桑	9	140	260	4	8	2	6	Fair	Fair	Medium	-	
	<i>Pandanus tectorius</i>	露兜樹	14	140	180	3	6	3	4	Fair	Fair	Medium	-	
	<i>Persea americana</i>	鱷梨 (牛油果)	4	130	310	7	8	3	6	Fair	Fair	Medium	-	
	<i>Pinus eliottii</i>	濕地松 (麥氏松)	1	190	190	10	10	6	6	Fair	Fair	Medium	-	
	<i>Platycladus orientalis</i>	側柏	4	95	260	3	5	1	3	Fair	Fair	Medium	-	
	<i>Plumeria rubra</i>	雞蛋花	6	100	330	2	11	2	8	Fair	Fair	Medium	-	
	<i>Psidium guajava</i>	番石榴	7	160	400	4	7	3	5	Fair	Fair	Medium	-	
	<i>Radermachera sinica</i>	菜豆樹	1	450	450	12	12	8	8	Fair	Fair	Medium	-	
	<i>Ravenala madagascariensis</i>	旅人蕉	2	250	630	9	9	2	4	Fair	Fair	Medium	-	
	<i>Sapindus saponaria</i>	無患子	8	150	280	4	9	1	5	Fair	Fair	Medium	-	
	<i>Sapium sebiferum</i>	烏柏	122	120	430	4	8	3	6	Fair	Fair	Medium	-	
	<i>Schefflera actinophylla</i>	傘樹 (澳洲鴨腳木)	1	340	340	8	8	4	4	Fair	Fair	Medium	-	
	<i>Schefflera heptaphylla</i>	鵝掌柴 (鴨腳木)	3	170	280	6	9	3	6	Fair	Fair	Medium	-	
	<i>Scolopia saeva</i>	廣東刺楸	11	120	230	4	6	3	4	Fair	Fair	Medium	-	
	<i>Sterculia lanceolata</i>	假蘋婆	12	110	260	5	8	3	5	Fair	Fair	Medium	-	
	<i>Sterculia monosperma</i>	蘋婆	3	150	180	6	6	3	4	Fair	Fair	Medium	-	
	<i>Swietenia macrophylla</i>	大葉桃花心木	4	310	630	8	10	4	7	Fair	Fair	Medium	-	
	<i>Syzygium cumini</i>	烏墨 (海南蒲桃)	2	360	580	7	8	5	6	Fair	Fair	Medium	-	
	<i>Syzygium jambos</i>	蒲桃	6	100	450	5	12	5	12	Fair	Fair	Medium	-	
	<i>Syzygium myrtifolium</i>	鐘花蒲桃	1	120	120	7	7	2	2	Fair	Fair	Medium	-	
	<i>Syzygium samarangense</i>	洋蒲桃	1	170	170	9	9	7	7	Fair	Fair	Medium	-	
	<i>Tabebuia chrysantha</i>	黃鐘木 (黃花風鈴木)	2	110	140	5	5	3	3	Fair	Fair	Medium	-	
	<i>Terminalia catappa</i>	欖仁樹	23	150	610	6	11	3	8	Fair	Fair	Medium	-	
	<i>Terminalia mantaly</i>	小葉欖仁	9	330	570	9	13	7	14	Fair	Fair	Medium	-	
<i>Toxicodendron succedaneu</i>	野漆樹 (木蠟樹)	1	120	120	5	5	4	4	Fair	Fair	Medium	-		
<i>Trema tomentos</i>	山黃麻	1	100	100	4	4	4	4	Fair	Fair	Medium	-		
<i>Zanthoxylum avicennae</i>	荊欖花椒	1	140	140	5	5	2	2	Fair	Fair	Medium	-		

TREE ASSESSMENT SCHEDULE

Contract No. PM 02/2022

Project Title: Broad Brush Tree Survey in Mui Wo (Group 6)

Date of Tree Survey: Late August 2022 to late October 2022

Surveyed by: Peggy Leung (AA:PR5946)

Tree Group Number	Species		Estimated quantity of trees	Range of DBH (mm)		Range of Height (m)		Range of Crown Spread (m)		Typical Health Condition (Good/Fair/Poor)	Typical Tree Form	Typical Amenity Value (High/Medium/Low)	Additional Remarks	Approximate no. of trees in Group
	Scientific name	Chinese name		Min.	Max.	Min.	Max.	Min.	Max.					
Group 6	<i>Acacia auriculiformis</i>	耳果相思	20	110	290	6	12	6	10	Fair	Fair	Medium	-	2591
	<i>Acacia confusa</i>	台灣相思	587	130	420	6	16	4	10	Fair	Fair	Medium	-	
	<i>Alangium chinense</i>	八角楓	54	130	210	5	10	3	6	Fair	Fair	Medium	-	
	<i>Aporosa dioica</i>	銀柴	53	140	230	5	6	3	4	Fair	Fair	Medium	-	
	<i>Aquilaria sinensis</i>	土沉香	32	95	200	6	8	4	6	Fair	Fair	High	Rare and Precious Plants of Hong Kong: Near Threatened (NT)	
	<i>Artocarpus heterophyllus</i>	菠蘿蜜	3	130	350	5	12	6	8	Fair	Fair	Medium	-	
	<i>Averrhoa carambola</i>	楊桃	7	100	150	5	8	4	6	Fair	Fair	Medium	-	
	<i>Bombax ceiba</i>	木棉	1	350	350	16	16	10	10	Fair	Fair	Medium	-	
	<i>Bridelia tomentosa</i>	土蜜樹 (逼迫仔)	15	95	150	4	8	4	8	Fair	Fair	Medium	-	
	<i>Carica papaya</i>	番木瓜	23	95	140	4	8	1	3	Fair	Fair	Medium	-	
	<i>Castanopsis fissa</i>	裂斗錐栗	21	95	300	4	10	4	7	Fair	Fair	Medium	-	
	<i>Casuarina equisetifolia</i>	木麻黃 (牛尾松)	3	170	270	8	16	5	6	Fair	Fair	Medium	-	
	<i>Celtis sinensis</i>	朴	19	250	280	9	10	7	8	Fair	Fair	Medium	-	
	<i>Choerospondias axillaris</i>	南酸棗	33	170	290	10	11	8	10	Fair	Fair	Medium	-	
	<i>Cinnamomum camphora</i>	樟	21	290	330	11	12	9	10	Fair	Fair	Medium	-	
	<i>Cinnamomum parthenoxylon</i>	黃樟	7	300	380	8	10	5	6	Fair	Fair	Medium	-	
	<i>Citrus maxima</i>	柚	1	170	170	8	8	6	6	Fair	Fair	Medium	-	
	<i>Clausena lansium</i>	黃皮	15	95	250	5	7	3	6	Fair	Fair	Medium	-	
	<i>Cratogeomys cochinchinense</i>	黃牛木	3	150	190	4	6	2	4	Fair	Fair	Medium	-	
	<i>Dead Tree</i>	死樹	11	170	330	7	12	2	8	Poor	Poor	Low	-	
	<i>Delonix regia</i>	鳳凰木	3	170	220	7	8	6	7	Fair	Fair	Medium	-	
	<i>Dimocarpus longan</i>	龍眼	78	190	370	10	12	8	10	Fair	Fair	Medium	-	
	<i>Elaeocarpus spp.</i>	杜英屬	37	110	250	6	8	4	6	Fair	Fair	Medium	-	
	<i>Elaeocarpus sylvestris</i>	山杜英	78	110	250	6	12	6	11	Fair	Fair	Medium	-	
	<i>Eucalyptus spp.</i>	桉屬	5	290	300	16	16	10	10	Fair	Fair	Medium	-	
	<i>Ficus variegata</i>	青果榕	51	240	240	11	6	6	8	Fair	Fair	Medium	-	
	<i>Ficus hispida</i>	對葉榕 (牛乳榕)	71	95	95	6	6	4	4	Fair	Fair	Medium	-	
	<i>Litsea chinensis</i>	荔枝	121	110	480	6	12	8	14	Fair	Fair	Medium	-	
	<i>Litsea cubeba</i>	木薑子	38	150	330	5	8	4	6	Fair	Fair	Medium	-	
	<i>Litsea monopetala</i>	假柿木薑子	27	110	320	6	12	6	10	Fair	Fair	Medium	-	
	<i>Litsea rotundifolia</i>	豹皮樟	14	100	260	4	7	3	8	Fair	Fair	Medium	-	
	<i>Macaranga tanarius var. tomentosa</i>	血桐	129	95	290	3	7	6	10	Fair	Fair	Medium	-	
	<i>Machilus spp.</i>	潤楠屬	138	95	480	5	12	3	11	Fair	Fair	Medium	-	
	<i>Mallotus paniculatus</i>	白楸	101	95	250	4	7	6	10	Fair	Fair	Medium	-	
	<i>Mangifera indica</i>	芒果	1	150	150	6	6	4	4	Fair	Fair	Medium	-	
	<i>Microcos nervosa</i>	破布葉 (布渣葉)	77	95	230	6	11	5	10	Fair	Fair	Medium	-	
	<i>Schefflera heptaphylla</i>	鵝掌柴 (鴨腳木)	162	170	330	6	9	3	5	Fair	Fair	Medium	-	
	<i>Sterculia lanceolata</i>	假蘋婆	184	95	230	5	8	3	5	Fair	Fair	Medium	-	
	<i>Sterculia monosperma</i>	蘋婆	237	95	310	4	10	2	8	Fair	Fair	Medium	-	
	<i>Tetradium glaberrimum</i>	椽葉吳茱萸	8	150	210	6	8	3	6	Fair	Fair	Medium	-	
<i>Toxicodendron succedaneu</i>	野漆樹 (木蠟樹)	18	120	190	5	6	4	4	Fair	Fair	Medium	-		
<i>Melicope pteleifolia</i>	三桠苦 (蜜菜蕒)	11	95	140	3	4	2	3	Fair	Fair	Medium	-		
<i>Vernicia montana</i>	木油樹 (木油桐 & 千年桐)	13	150	210	6	10	4	5	Fair	Fair	Medium	-		
<i>Litsea glutinosa</i>	潺槁樹	22	120	230	5	8	3	5	Fair	Fair	Medium	-		
<i>Toona sinensis</i>	香椿	12	250	320	8	12	4	6	Fair	Fair	Medium	-		
<i>Zanthoxylum avicennae</i>	筋攞花椒	26	95	150	2	5	1	5	Fair	Fair	Medium	-		

TREE ASSESSMENT SCHEDULE

Contract No. PM 02/2022

Project Title: Broad Brush Tree Survey in Mui Wo (Group 7)

Date of Tree Survey: Late August 2022 to late October 2022

Surveyed by: Peggy Leung (AA:PR5946)

Tree Group Number	Species		Estimated quantity of trees	Range of DBH (mm)		Range of Height (m)		Range of Crown Spread (m)		Typical Health Condition (Good/Fair/Poor)	Typical Tree Form	Typical Amenity Value (High/Medium/Low)	Additional Remarks	Approximate no. of trees in Group
	Scientific name	Chinese name		Min.	Max.	Min.	Max.	Min.	Max.					
Group 7	<i>Acacia confusa</i>	台灣相思	474	130	410	7	15	3	10	Fair	Fair	Medium	-	2065
	<i>Alangium chinense</i>	八角楓	98	95	230	4	9	3	6	Fair	Fair	Medium	-	
	<i>Aleurites moluccanus</i>	石栗	4	380	420	14	15	10	11	Fair	Fair	Medium	-	
	<i>Aporosa dioica</i>	銀柴	9	140	230	5	6	3	4	Fair	Fair	Medium	-	
	<i>Aquilaria sinensis</i>	土沉香	19	110	300	4	11	3	8	Fair	Fair	High	Rare and Precious Plants of Hong Kong; Near Threatened (NT)	
	<i>Archontophoenix alexandrae</i>	假檳榔	1	150	180	7	10	2	2	Fair	Fair	Medium	-	
	<i>Artocarpus heterophyllus</i>	菠蘿蜜	3	140	140	6	6	4	4	Fair	Fair	Medium	-	
	<i>Bauhinia spp.</i>	羊蹄甲屬	43	130	190	5	10	4	6	Fair	Fair	Medium	-	
	<i>Bombax ceiba</i>	木棉	6	510	510	16	16	8	8	Fair	Fair	Medium	-	
	<i>Bridelia tomentosa</i>	土蜜樹 (彌迦仔)	33	200	170	7	9	5	7	Fair	Fair	Medium	-	
	<i>Canarium album</i>	橄欖 (白欖)	3	430	490	14	16	10	12	Fair	Fair	Medium	-	
	<i>Carica papaya</i>	番木瓜	5	95	140	4	8	1	3	Fair	Fair	Medium	-	
	<i>Caryota mitis</i>	短穗魚尾葵	5	170	210	10	11	6	8	Fair	Fair	Medium	-	
	<i>Casuarina equisetifolia</i>	木麻黃 (牛尾松)	14	480	520	20	20	14	14	Fair	Fair	Medium	-	
	<i>Celtis sinensis</i>	朴	81	130	390	6	12	4	10	Fair	Fair	Medium	-	
	<i>Cinnamomum burmannii</i>	檳香	8	220	300	8	12	6	8	Fair	Fair	Medium	-	
	<i>Cinnamomum parthenoxylon</i>	黃樟	18	300	380	8	10	5	6	Fair	Fair	Medium	-	
	<i>Citrus maxima</i>	柚	1	170	170	8	8	6	6	Fair	Fair	Medium	-	
	<i>Clausena lansium</i>	黃皮	9	110	140	4	6	3	4	Fair	Fair	Medium	-	
	<i>Corymbia citriodora</i>	檸檬桉	1	810	810	18	18	18	18	Fair	Fair	Medium	Mature tree	
	<i>Cratoxylum cochinchinense</i>	黃牛木	22	150	190	4	7	4	5	Fair	Fair	Medium	-	
	Dead Tree	死樹	30	210	330	10	12	2	8	Poor	Poor	Low	-	
	<i>Delonix regia</i>	鳳凰木	15	210	300	6	9	6	8	Fair	Fair	Medium	-	
	<i>Dimocarpus longan</i>	龍眼	48	200	480	6	10	6	8	Fair	Fair	Medium	-	
	<i>Elaeocarpus spp.</i>	杜英屬	3	300	480	9	10	6	7	Fair	Fair	Medium	-	
	<i>Elaeocarpus sylvestris</i>	山杜英	33	150	170	5	7	3	6	Fair	Fair	Medium	-	
	<i>Eucalyptus spp.</i>	桉屬	2	290	300	16	16	10	10	Fair	Fair	Medium	-	
	<i>Ficus subspicarpa</i>	筆管榕	4	300	480	9	10	6	7	Fair	Fair	Medium	-	
	<i>Ficus variegata</i>	青果榕	44	210	210	10	10	8	8	Fair	Fair	Medium	-	
	<i>Ficus hispida</i>	對葉榕 (牛乳榕)	52	100	190	4	6	2	4	Fair	Fair	Medium	-	
	<i>Garcinia oblongifolia</i>	黃牙果 (嶺南山竹子)	2	160	160	8	8	4	4	Fair	Fair	Medium	-	
	<i>Ilex rotunda var. microcarpa</i>	鐵冬青	1	170	170	5	5	3	3	Fair	Fair	Medium	-	
	<i>Leucaena leucocephala</i>	銀合歡	2	110	170	6	12	4	6	Fair	Fair	Medium	Invasive species	
	<i>Ligustrum sinense</i>	山指甲	11	110	130	5	6	4	5	Fair	Fair	Medium	-	
	<i>Litchi chinensis</i>	荔枝	245	150	410	6	12	4	10	Fair	Fair	Medium	-	
	<i>Litsea cubeba</i>	木薑子	23	170	190	5	6	3	4	Fair	Fair	Medium	-	
	<i>Litsea glutinosa</i>	潺槁樹	18	150	180	6	8	5	10	Fair	Fair	Medium	-	
	<i>Litsea rotundifolia</i>	豺皮樟	1	95	95	3	3	3	3	Fair	Fair	Medium	-	
	<i>Livistona chinensis</i>	蒲葵	6	200	200	14	14	4	4	Fair	Fair	Medium	-	
	<i>Macaranga tanarius var. tomentosa</i>	血桐	154	170	330	6	8	4	6	Fair	Fair	Medium	-	
<i>Machilus spp.</i>	潤楠屬	3	95	480	5	12	3	11	Fair	Fair	Medium	-		
<i>Mallotus paniculatus</i>	白楸	92	160	280	7	7	5	5	Fair	Fair	Medium	-		
<i>Melia azedarach</i>	苦楝	3	220	220	9	9	6	6	Fair	Fair	Medium	-		
<i>Michelia x alba</i>	白蘭	3	130	580	6	14	4	10	Fair	Fair	Medium	-		
<i>Microcos nervosa</i>	破布葉 (布渣葉)	50	150	260	6	7	4	5	Fair	Fair	Medium	-		
<i>Pinus eliottii</i>	濕地松 (愛氏松)	5	170	190	10	11	6	7	Fair	Fair	Medium	-		
<i>Psidium quajava</i>	番石榴	2	160	400	4	7	3	5	Fair	Fair	Medium	-		
<i>Rhus chinensis</i>	鹽膚木	8	150	190	5	6	4	4	Fair	Fair	Medium	-		
<i>Schefflera actinophylla</i>	傘樹 (澳洲鴨腳木)	1	150	150	6	6	4	4	Fair	Fair	Medium	-		
<i>Schefflera heptaphylla</i>	鴨掌柴 (鴨腳木)	64	170	210	6	7	5	6	Fair	Fair	Medium	-		
<i>Senna siamea</i>	鐵刀木	8	270	520	8	14	5	10	Fair	Fair	Medium	-		
<i>Sterculia lanceolata</i>	假蒺藜	192	170	220	7	7	6	6	Fair	Fair	Medium	-		
<i>Sterculia monosperma</i>	蒺藜	36	170	190	7	7	6	6	Fair	Fair	Medium	-		

**TREE ASSESSMENT SCHEDULE**

Contract No. PM 02/2022

Project Title: Broad Brush Tree Survey in Mui Wo (Group 7)

Date of Tree Survey: Late August 2022 to late October 2022

Surveyed by: Peggy Leung (AA:PR5946)

Tree Group Number	Species		Estimated quantity of trees	Range of DBH (mm)		Range of Height (m)		Range of Crown Spread (m)		Typical Health Condition (Good/Fair/Poor)	Typical Tree Form	Typical Amenity Value (High/Medium/Low)	Additional Remarks	Approximate no. of trees in Group
	Scientific name	Chinese name		Min.	Max.	Min.	Max.	Min.	Max.					
Group 7	<i>Syzygium jambos</i>	蒲桃	8	160	240	5	8	3	6	Fair	Fair	Medium	-	2065
	<i>Toxicodendron succedaneu</i>	野漆樹 (木蠟樹)	2	120	190	5	6	4	4	Fair	Fair	Medium	-	
	<i>Trema tomentos</i>	山黃麻	2	95	110	4	4	3	3	Fair	Fair	Medium	-	
	<i>Triadica cochinchinensis</i>	山烏柏	21	130	220	5	8	3	4	Fair	Fair	Medium	-	
	<i>Vernicia montana</i>	木油樹(木油桐&千年桐)	9	110	150	5	6	3	4	Fair	Fair	Medium	-	
	<i>Zanthoxylum avicennae</i>	荊欖花椒	1	110	110	4	4	2	2	Fair	Fair	Medium	-	
	<i>Lophostemon confertus</i>	紅膠木	2	310	310	10	10	4	4	Fair	Fair	Medium	-	
<i>Broussonetia papyrifera</i>	構樹	2	100	100	5	5	2	2	Fair	Fair	Medium	-		



TREE ASSESSMENT SCHEDULE

Contract No. PM 02/2022

Project Title: Broad Brush Tree Survey in Mui Wo (Group 2)

Date of Tree Survey: Late August 2022 to late October 2022

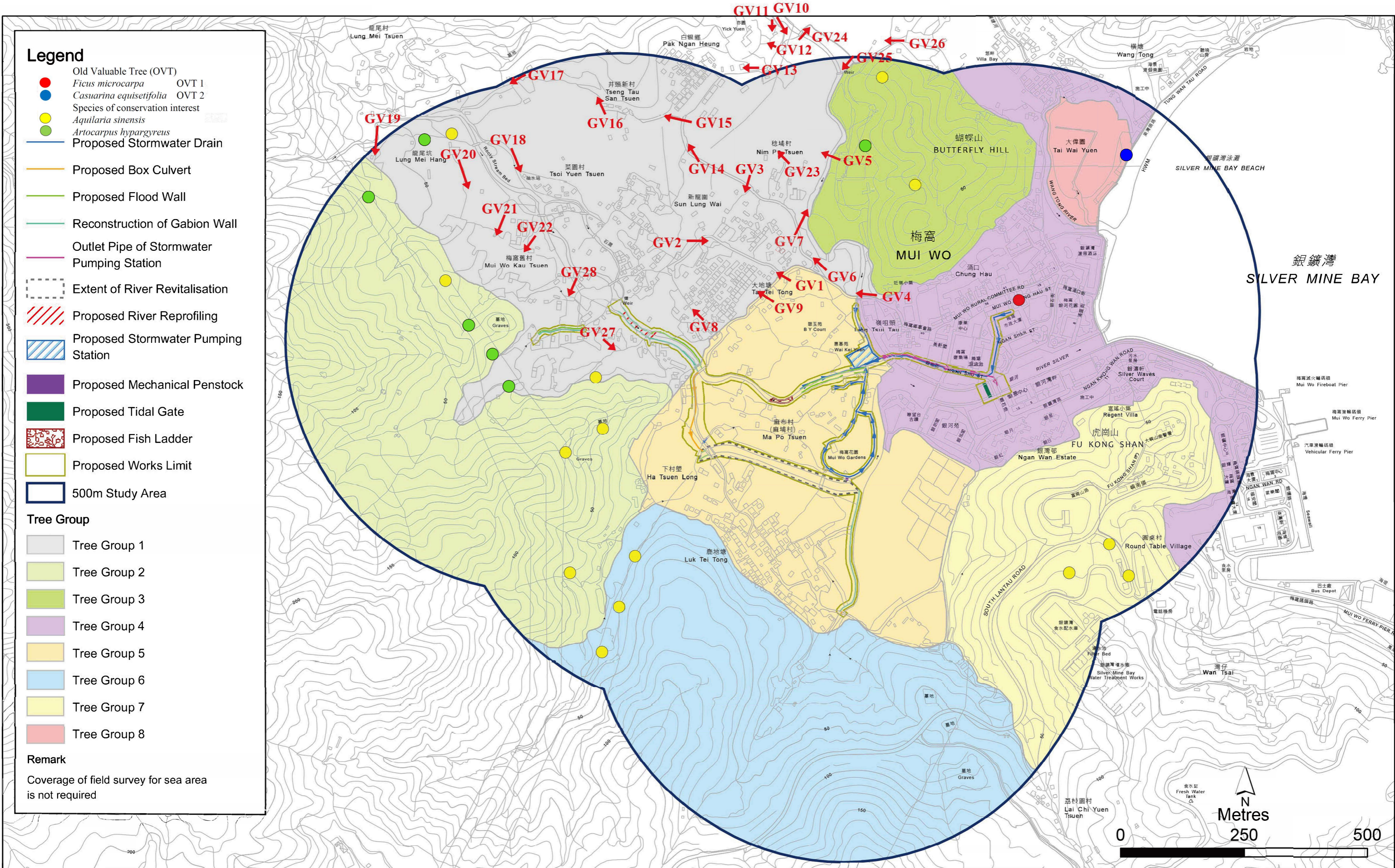
Surveyed by: Peggy Leung (AA:PR5946)

Tree Group Number	Species		Estimated quantity of trees	Range of DBH (mm)		Range of Height (m)		Range of Crown Spread (m)		Typical Health Condition (Good/Fair/Poor)	Typical Tree Form	Typical Amenity Value (High/Medium/Low)	Additional Remarks	Approximate no. of trees in Group
	Scientific name	Chinese name		Min.	Max.	Min.	Max.	Min.	Max.					
Group 8	<i>Araucaria columnaris</i>	柱狀南洋杉	2	180	210	10	12	3	3	Fair	Fair	Medium	-	466
	<i>Averrhoa carambola</i>	楊桃	1	150	150	6	6	4	4	Fair	Fair	Medium	-	
	<i>Bauhinia spp.</i>	羊蹄甲屬	1	150	150	6	6	5	5	Fair	Fair	Medium	-	
	<i>Bridelia tomentosa</i>	土蜜樹 (逼迫仔)	6	120	170	5	7	3	5	Fair	Fair	Medium	-	
	<i>Carica papaya</i>	番木瓜	3	130	150	6	8	2	2	Fair	Fair	Medium	-	
	<i>Casuarina equisetifolia*</i>	木麻黃 (牛尾松)*	11	200	1040	8	26	4	18	Fair	Fair	Medium	One number of OVT (Registration No: LCSD IS/3) has been observed at Silver Mine Bay Beach.	
	<i>Celtis sinensis</i>	朴	36	170	310	7	12	6	8	Fair	Fair	Medium	-	
	<i>Clausena lansium</i>	黃皮	11	130	210	4	6	3	4	Fair	Fair	Medium	-	
	Dead Tree	死樹	24	110	230	5	8	1	5	Poor	Poor	Low	-	
	<i>Delonix regia</i>	鳳凰木	8	210	330	6	10	5	8	Fair	Fair	Medium	-	
	<i>Dimocarpus longan</i>	龍眼	9	170	270	6	8	4	6	Fair	Fair	Medium	-	
	<i>Ficus benjamina</i>	垂葉榕	1	290	290	8	8	6	6	Fair	Fair	Medium	-	
	<i>Ficus microcarpa</i>	細葉榕	5	200	280	6	8	5	6	Fair	Fair	Medium	-	
	<i>Ficus subpisocarpa</i>	筆管榕	1	250	250	8	8	6	6	Fair	Fair	Medium	-	
	<i>Hibiscus tiliaceus</i>	黃槿	231	130	280	4	8	3	6	Fair	Fair	Medium	-	
	<i>Ilex rotunda var. microcarpa</i>	銀冬青	3	130	170	4	6	3	4	Fair	Fair	Medium	-	
	<i>Lagerstroemia speciosa</i>	大花紫薇	1	180	180	6	6	4	4	Fair	Fair	Medium	-	
	<i>Leucaena leucocephala</i>	銀合歡	1	140	140	6	6	4	4	Fair	Fair	Medium	Invasive species	
	<i>Litchi chinensis</i>	荔枝	5	130	190	5	7	4	5	Fair	Fair	Medium	-	
	<i>Litsea glutinosa</i>	潺槁樹	20	150	230	5	7	3	5	Fair	Fair	Medium	-	
	<i>Livistona chinensis</i>	蒲葵	1	180	180	6	6	4	4	Fair	Fair	Medium	-	
	<i>Macaranga tanarius var. tomentosa</i>	血桐	15	150	170	4	6	3	6	Fair	Fair	Medium	-	
	<i>Mangifera indica</i>	芒果	3	200	300	6	8	4	6	Fair	Fair	Medium	-	
	<i>Michelia x alba</i>	白蘭	2	280	330	8	10	6	8	Fair	Fair	Medium	-	
	<i>Microcos nervosa</i>	破布葉 (布渣葉)	12	130	210	5	8	3	6	Fair	Fair	Medium	-	
	<i>Morus alba</i>	桑	4	150	200	5	7	3	5	Fair	Fair	Medium	-	
<i>Phoenix dactylifera</i>	海棗	1	210	210	6	6	3	3	Fair	Fair	Medium	-		
<i>Ravenala madagascariensis</i>	旅人蕉	6	230	250	5	5	2	2	Fair	Fair	Medium	-		
<i>Roystonea regia</i>	王棕 (大王椰子)	2	230	250	8	10	3	4	Fair	Fair	Medium	-		
<i>Sterculia lanceolata</i>	假蘋婆	2	230	250	8	10	3	4	Fair	Fair	Medium	-		
<i>Terminalia catappa</i>	欖仁樹	38	100	300	4	9	3	5	Fair	Fair	Medium	-		

# APPENDIX C

---

## PHOTOGRAPHIC RECORD OF TREE GROUPS



Location Plan of Broad Brush Tree Survey  
(Drawing No. 409615/BIN/BTS/001)

# Photographic Record of Tree Group 1



GV1



GV2



GV3



GV4



GV5

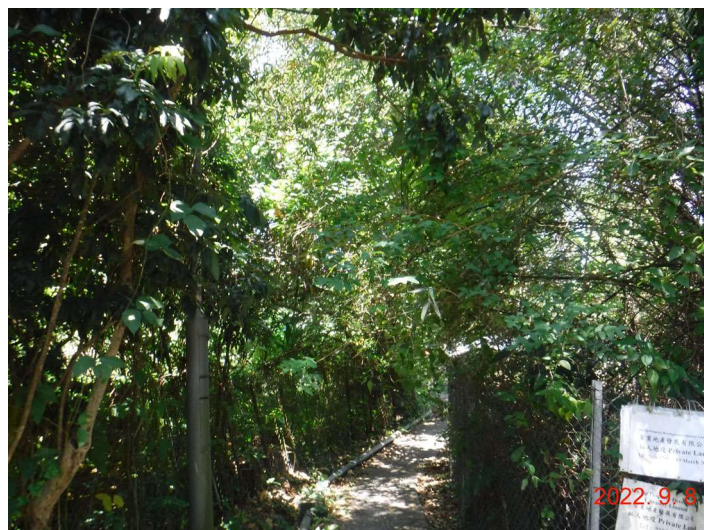


GV6

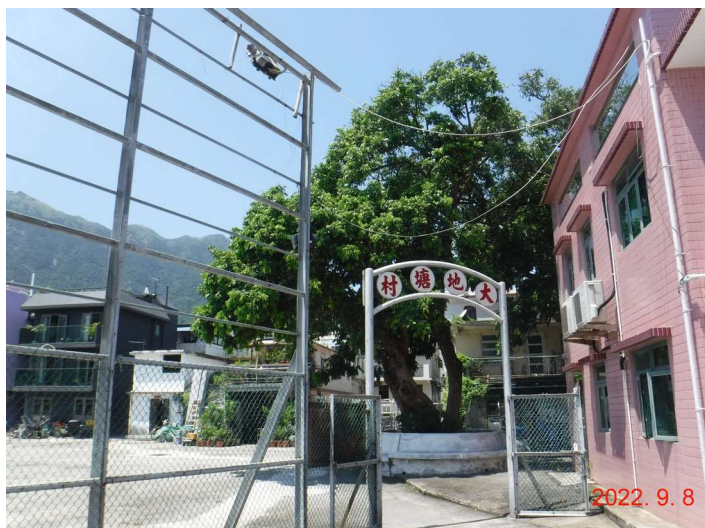
# Photographic Record of Tree Group 1



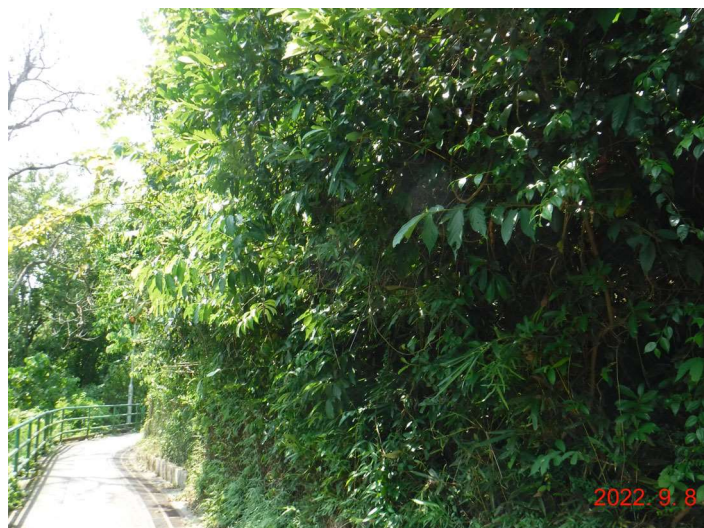
GV7



GV8



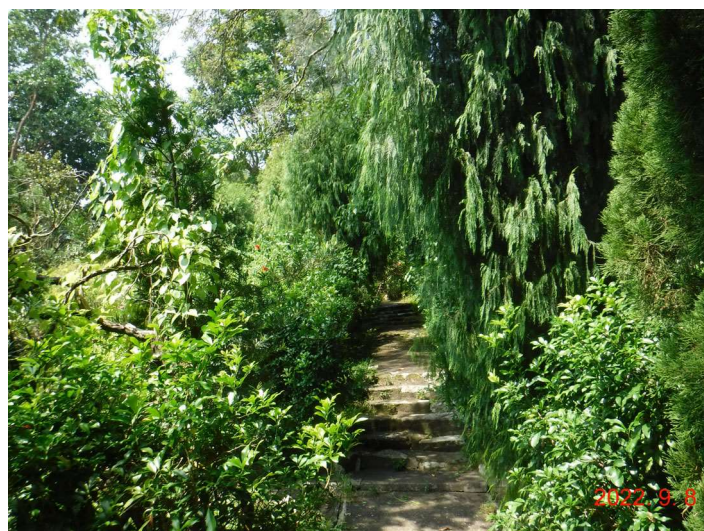
GV9



GV10



GV11



GV12

# Photographic Record of Tree Group 1



GV13



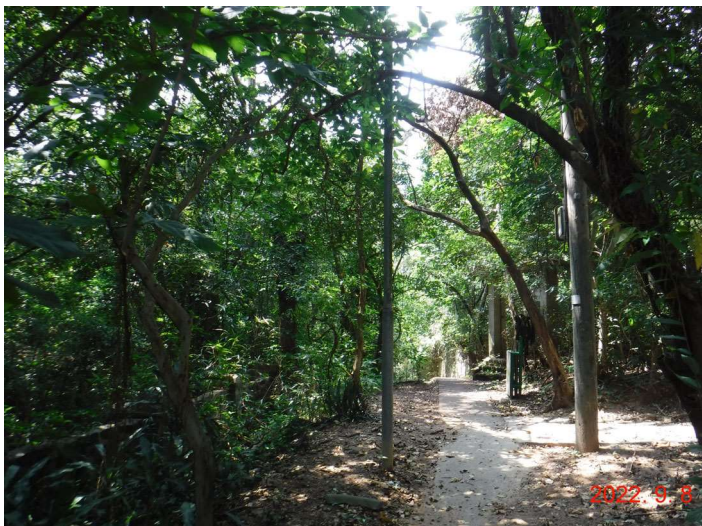
GV14



GV15



GV16



GV17

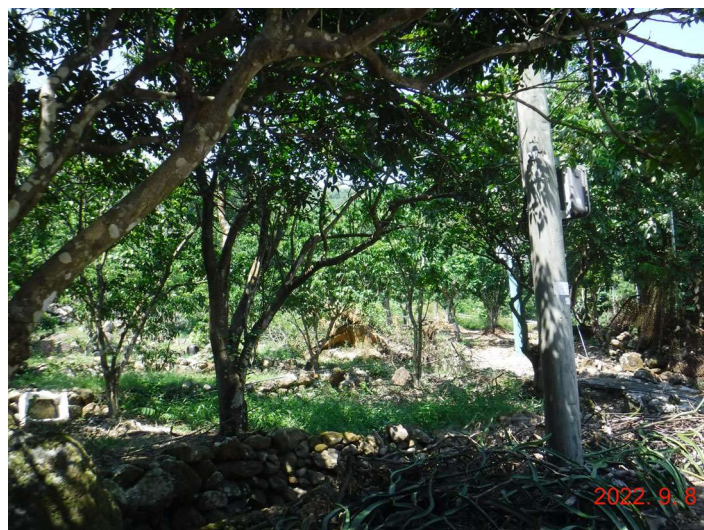


GV18

# Photographic Record of Tree Group 1



GV19



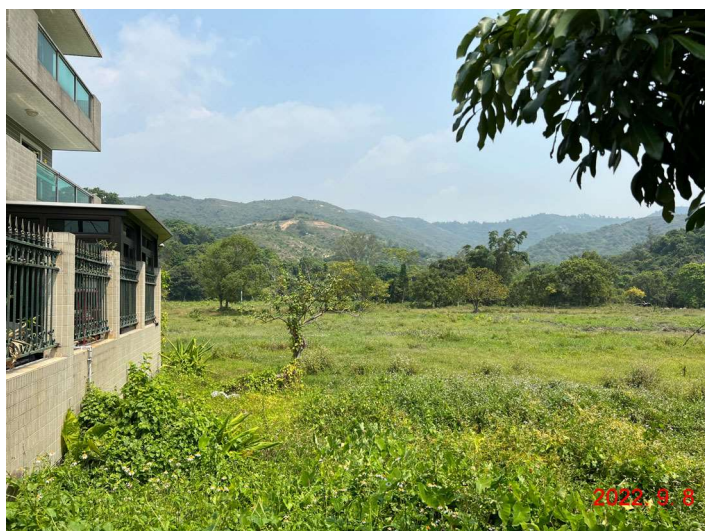
GV20



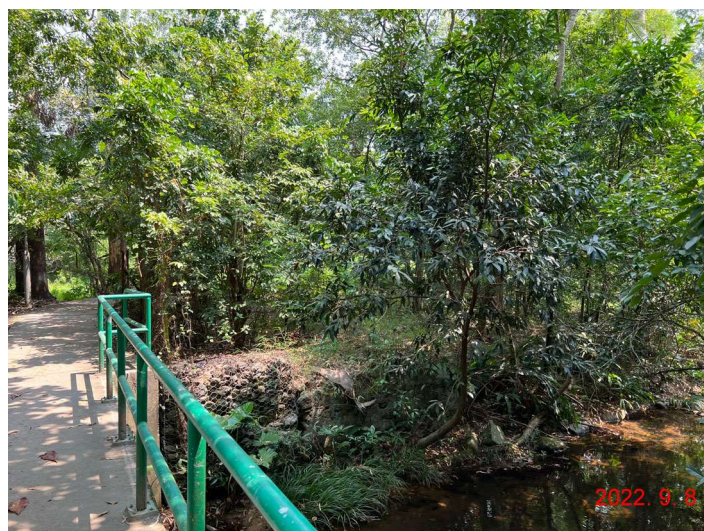
GV21



GV22

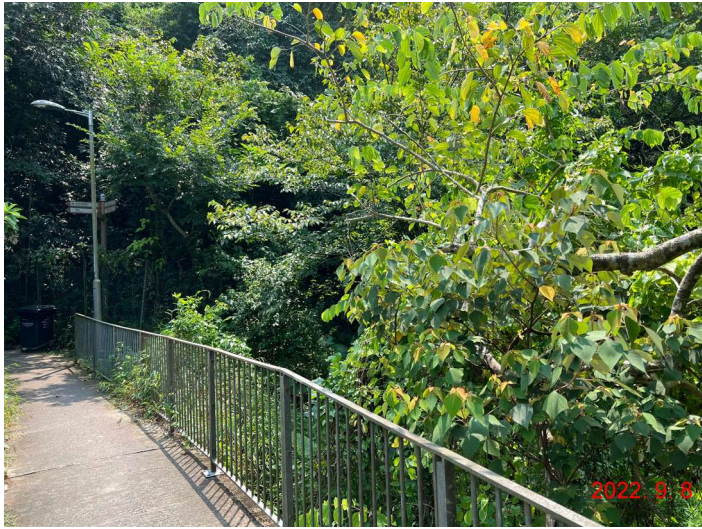


GV23

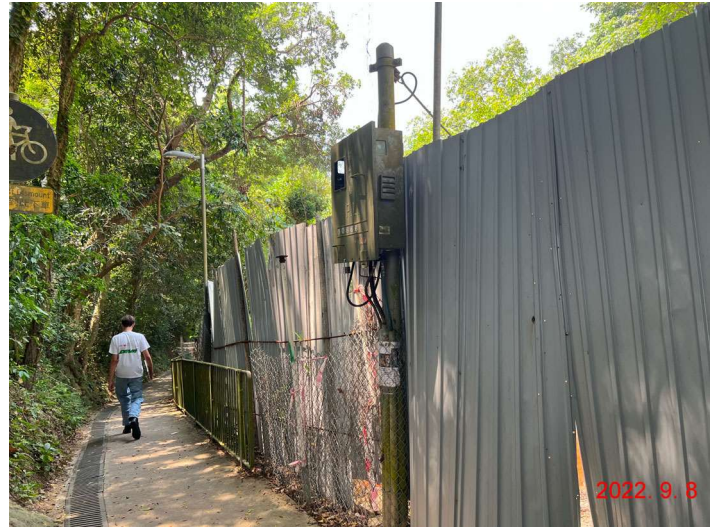


GV24

# Photographic Record of Tree Group 1



GV25



GV26



GV27



GV28





# Photographic Record of Tree Group 2



GV1



GV2



GV3



GV4



GV5



GV6

Photographic Record of Tree Group 2



GV7



GV8



GV9



GV10



GV11



GV12

Photographic Record of Tree Group 2



GV13



GV14



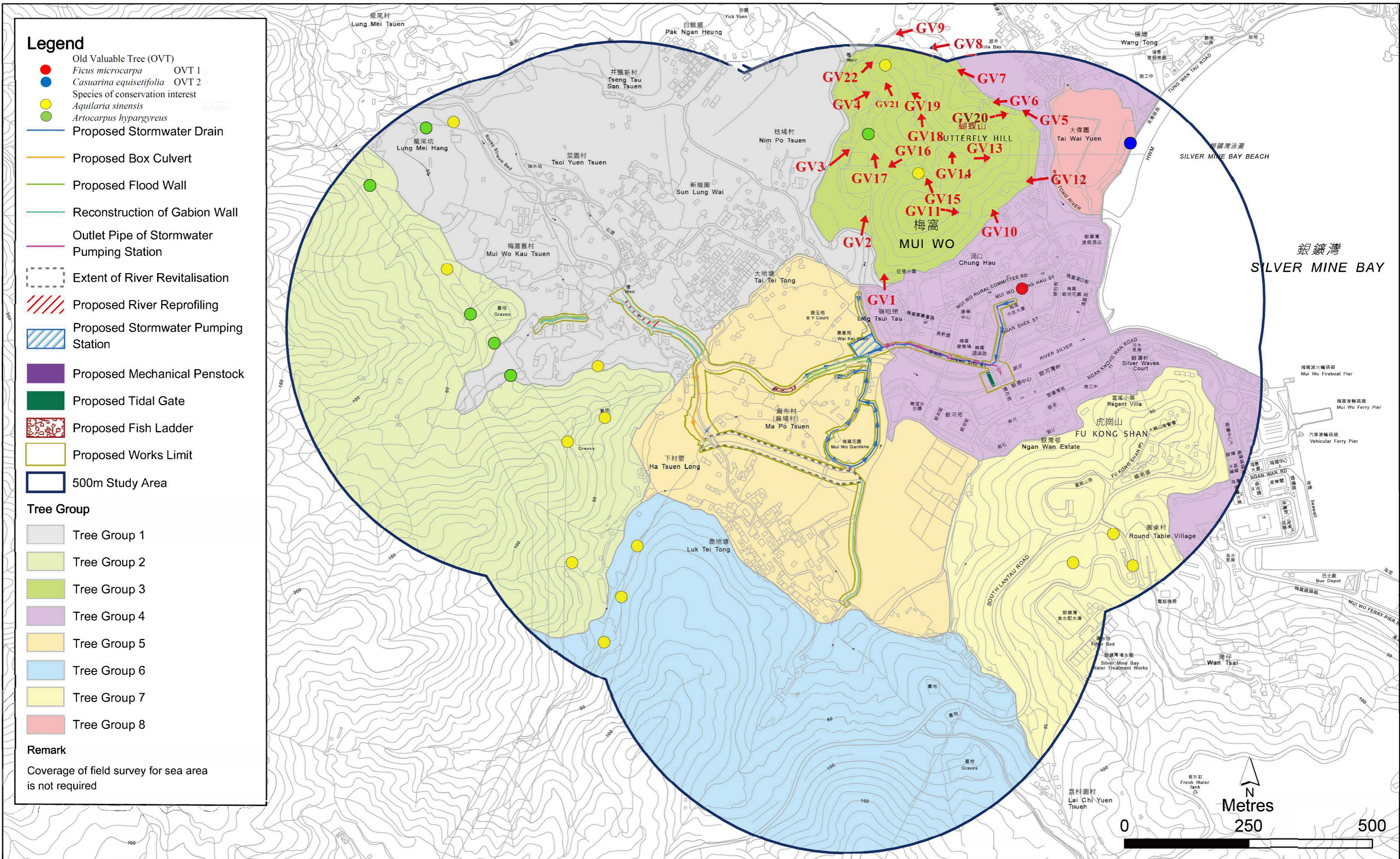
GV15



GV16



GV17



Location Plan of Broad Brush Tree Survey  
(Drawing No. 409615/BIN/BTS/001)

Photographic Record of Tree Group 3



GV1



GV2



GV3



GV4

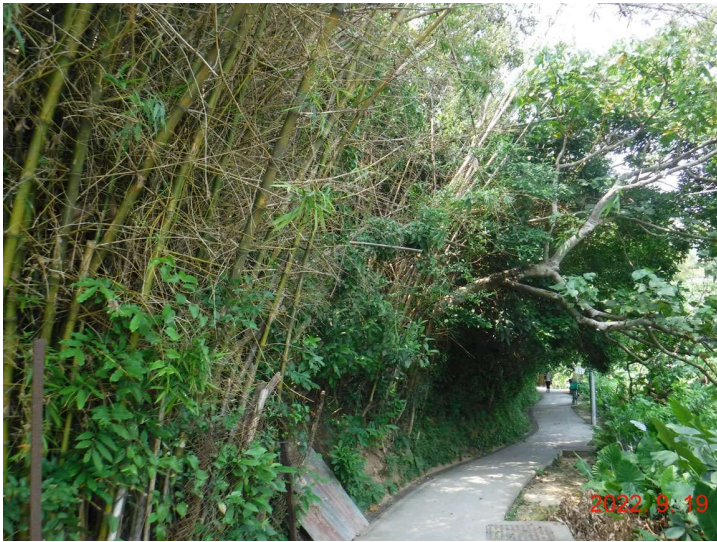


GV5



GV6

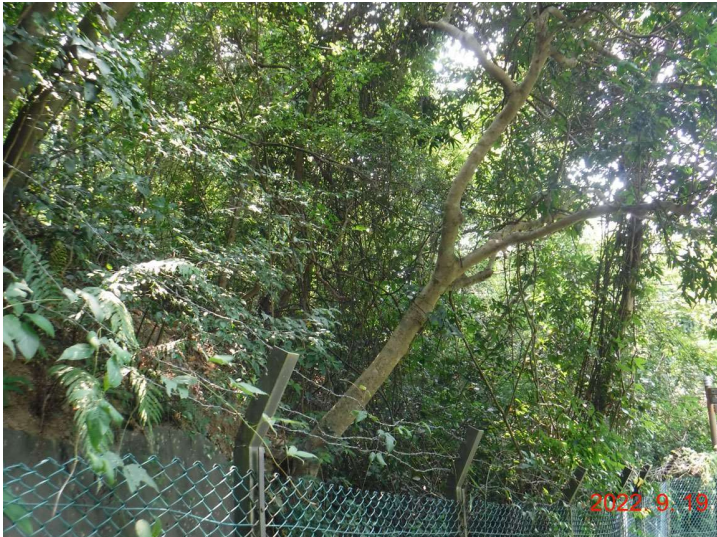
# Photographic Record of Tree Group 3



GV7



GV8



GV9



GV10



GV11



GV12

Photographic Record of Tree Group 3



GV13



GV14



GV15



GV16



GV17



GV18



Photographic Record of Tree Group 3



GV19



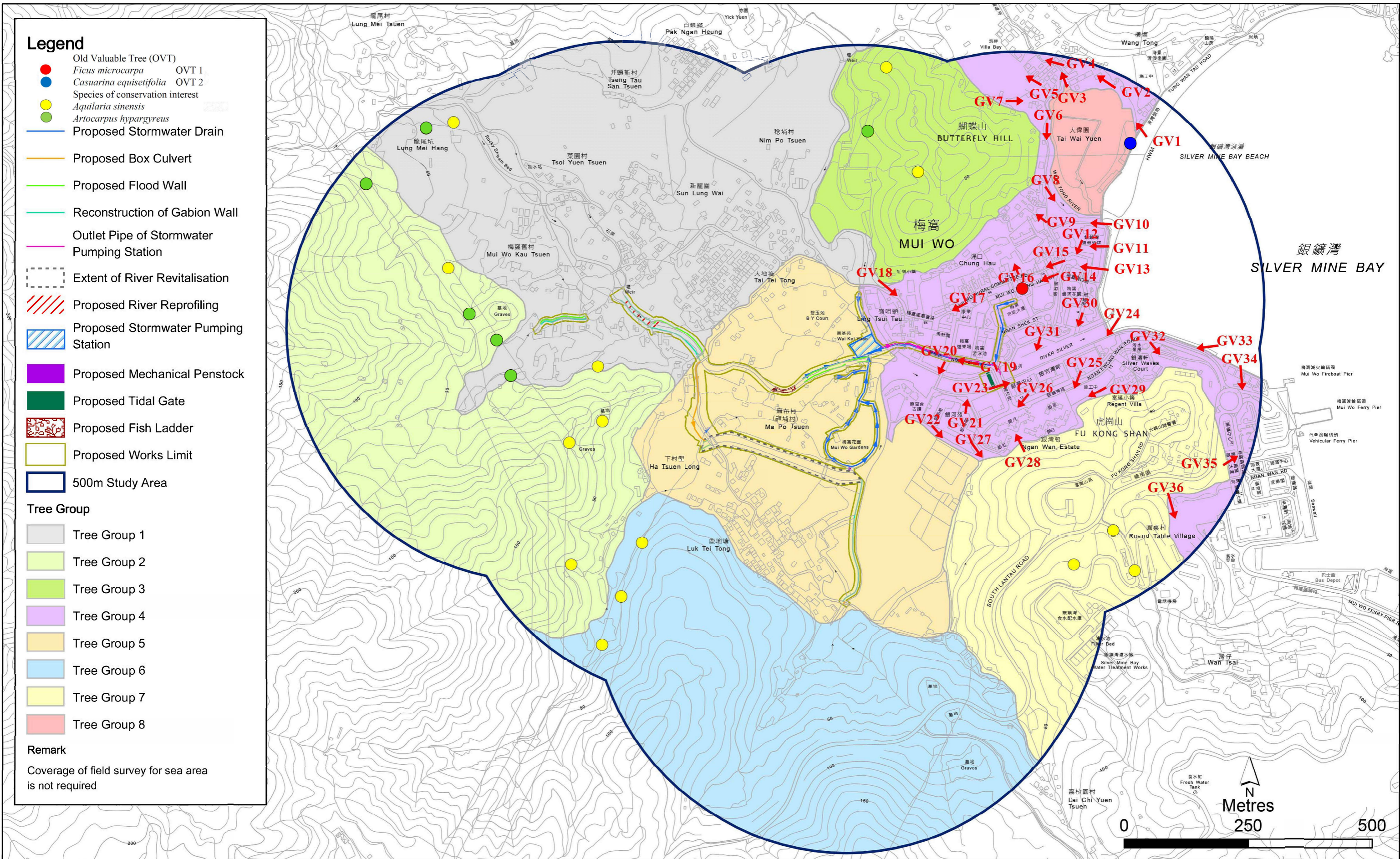
GV20



GV21



GV22



Location Plan of Broad Brush Tree Survey  
(Drawing No. 409615/BIN/BTS/001)

Photographic Record of Tree Group 4



GV1



GV2



GV3



GV4



GV5



GV6

# Photographic Record of Tree Group 4



GV7



GV8



GV9



GV10



GV11



GV12

Photographic Record of Tree Group 4



GV13



GV14



GV15



GV16



GV17



GV18

# Photographic Record of Tree Group 4



GV19



GV20



GV21



GV22



GV23



GV24

# Photographic Record of Tree Group 4



GV25



GV26



GV27



GV28



GV29



GV30

Photographic Record of Tree Group 4



GV31



GV32



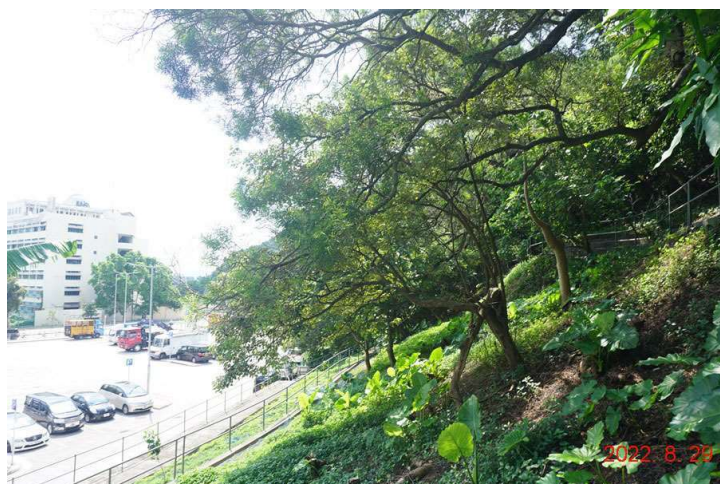
GV33



GV34



GV35



GV36





# Photographic Record of Tree Group 5



GV1



GV2



GV3



GV4



GV5



GV6

# Photographic Record of Tree Group 5



GV7



GV8



GV9



GV10



GV11



GV12

# Photographic Record of Tree Group 5



GV13



GV14



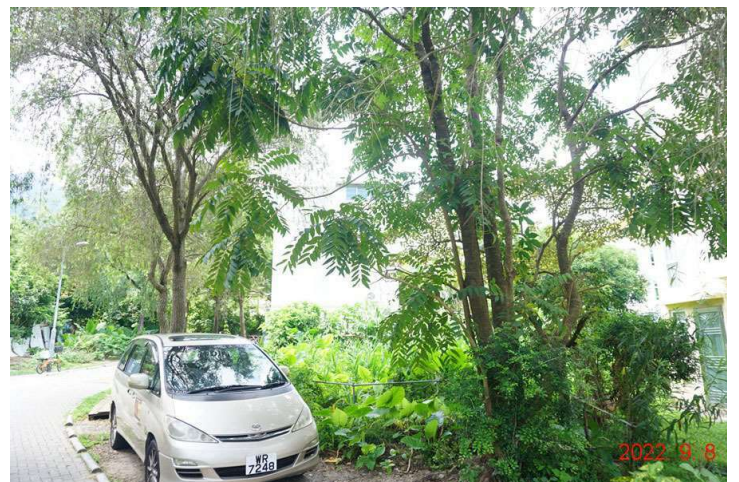
GV15



GV16



GV17



GV18

Photographic Record of Tree Group 5



GV19



GV20



GV21



GV22



GV23



GV24



# Photographic Record of Tree Group 6



GV1



GV2



GV3



GV4



GV5



GV6

Photographic Record of Tree Group 6



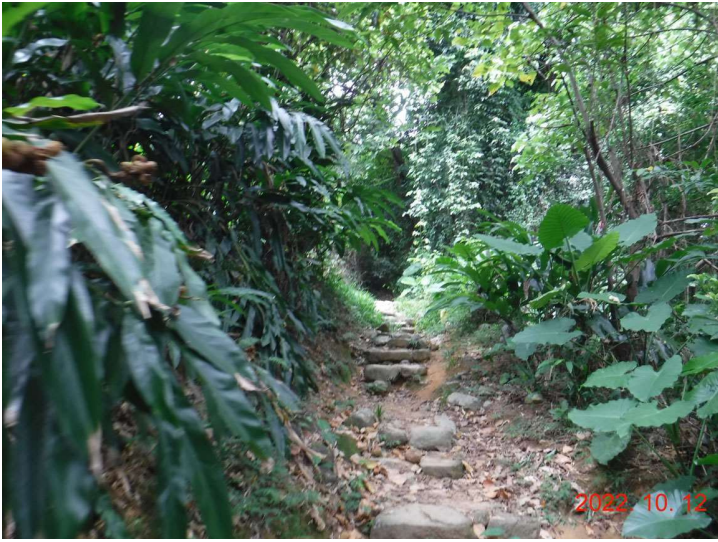
GV7



GV8



GV9



GV10



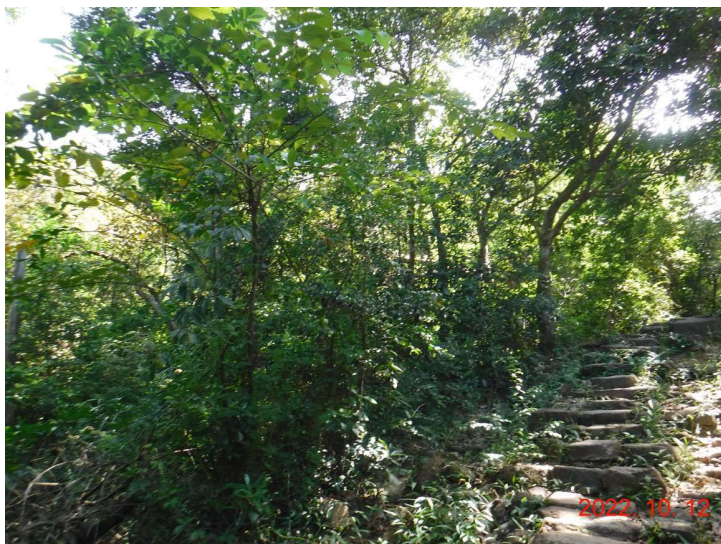
GV11



GV12



Photographic Record of Tree Group 6



GV13



GV14



GV15



GV16



GV17



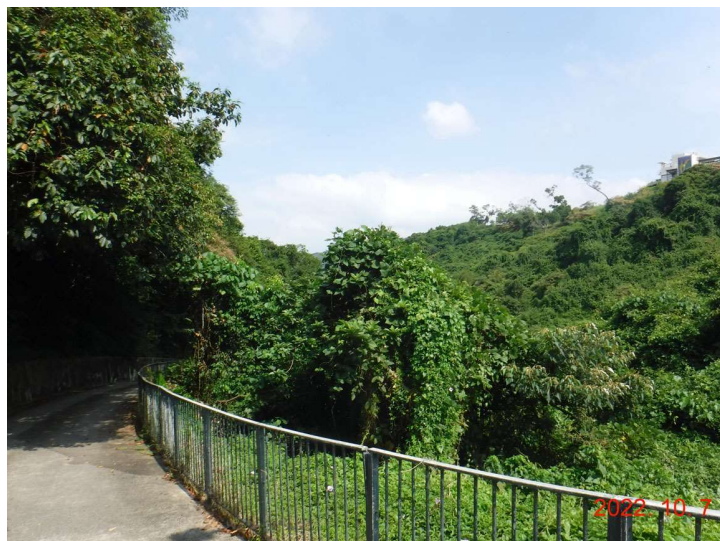
GV18



# Photographic Record of Tree Group 7



GV1



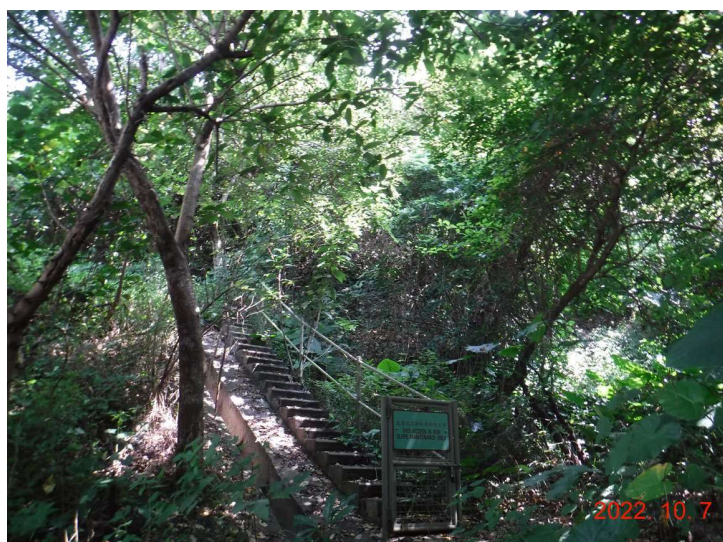
GV2



GV3



GV4



GV5



GV6

# Photographic Record of Tree Group 7



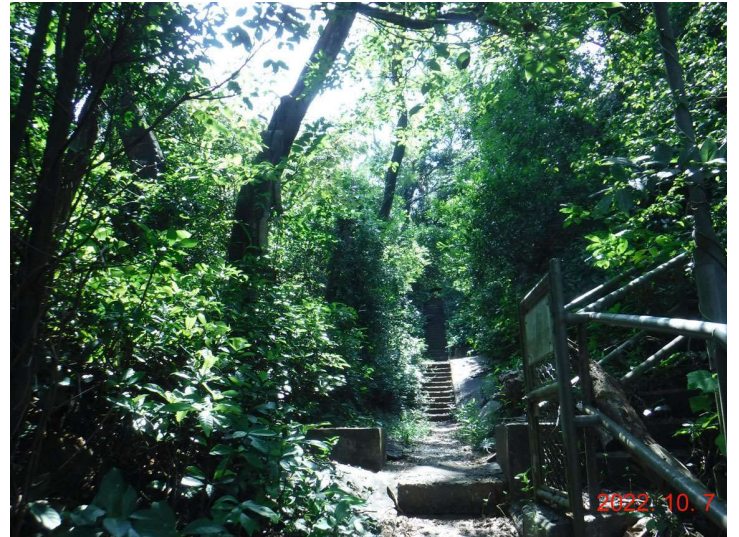
GV7



GV8



GV9



GV10



GV11



GV12

Photographic Record of Tree Group 7



GV13



GV14



GV15



GV16



GV17



GV18

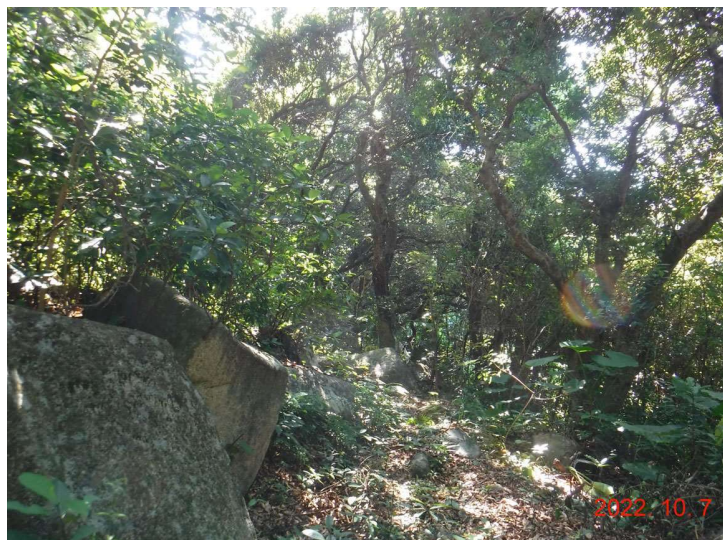
Photographic Record of Tree Group 7



GV19



GV20



GV21



GV22



GV23



GV24

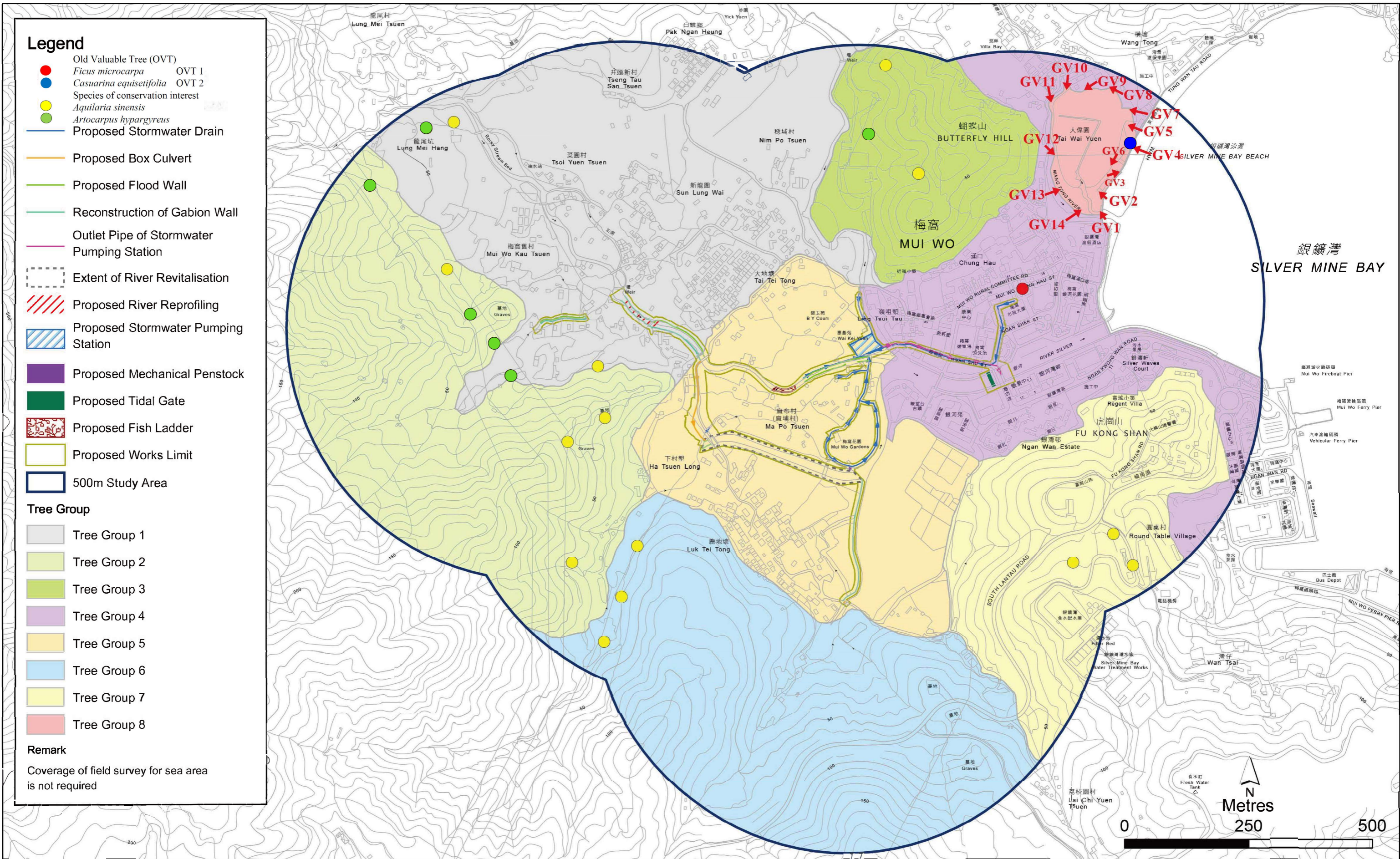
Photographic Record of Tree Group 7



GV25



GV26



Location Plan of Broad Brush Tree Survey  
(Drawing No. 409615/BIN/BTS/001)



# Photographic Record of Tree Group 8



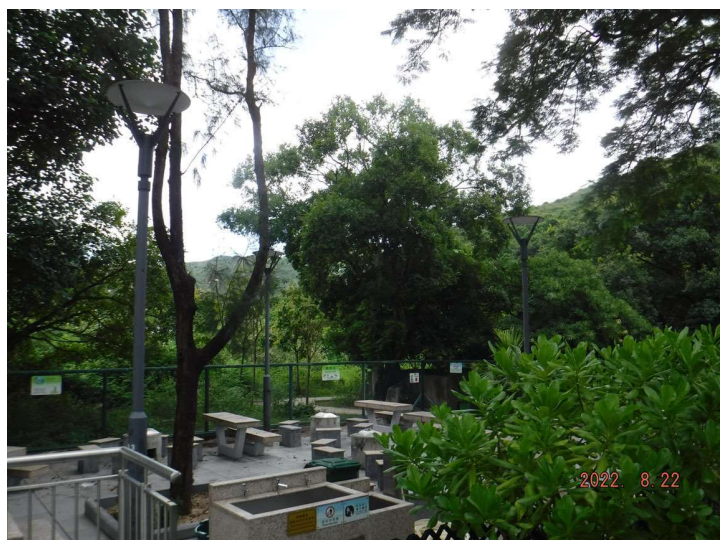
GV1



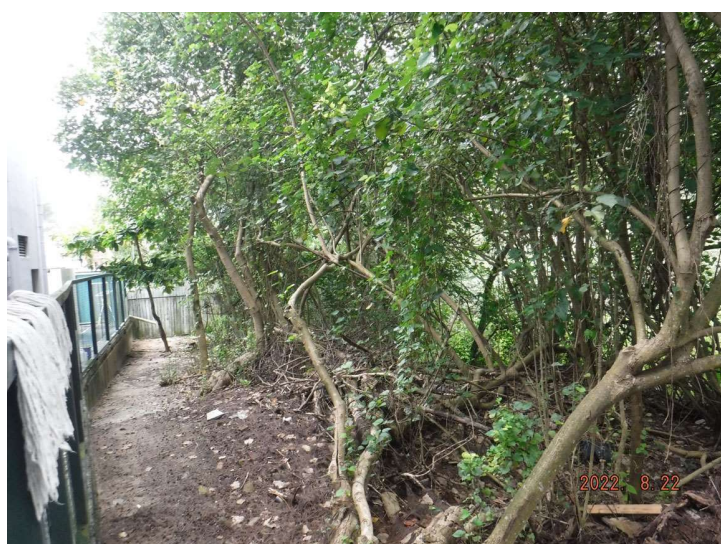
GV3



GV4



GV5



GV6



GV7

Photographic Record of Tree Group 8



GV8



GV9



GV10



GV11



GV12



GV13

Photographic Record of Tree Group 8



GV14