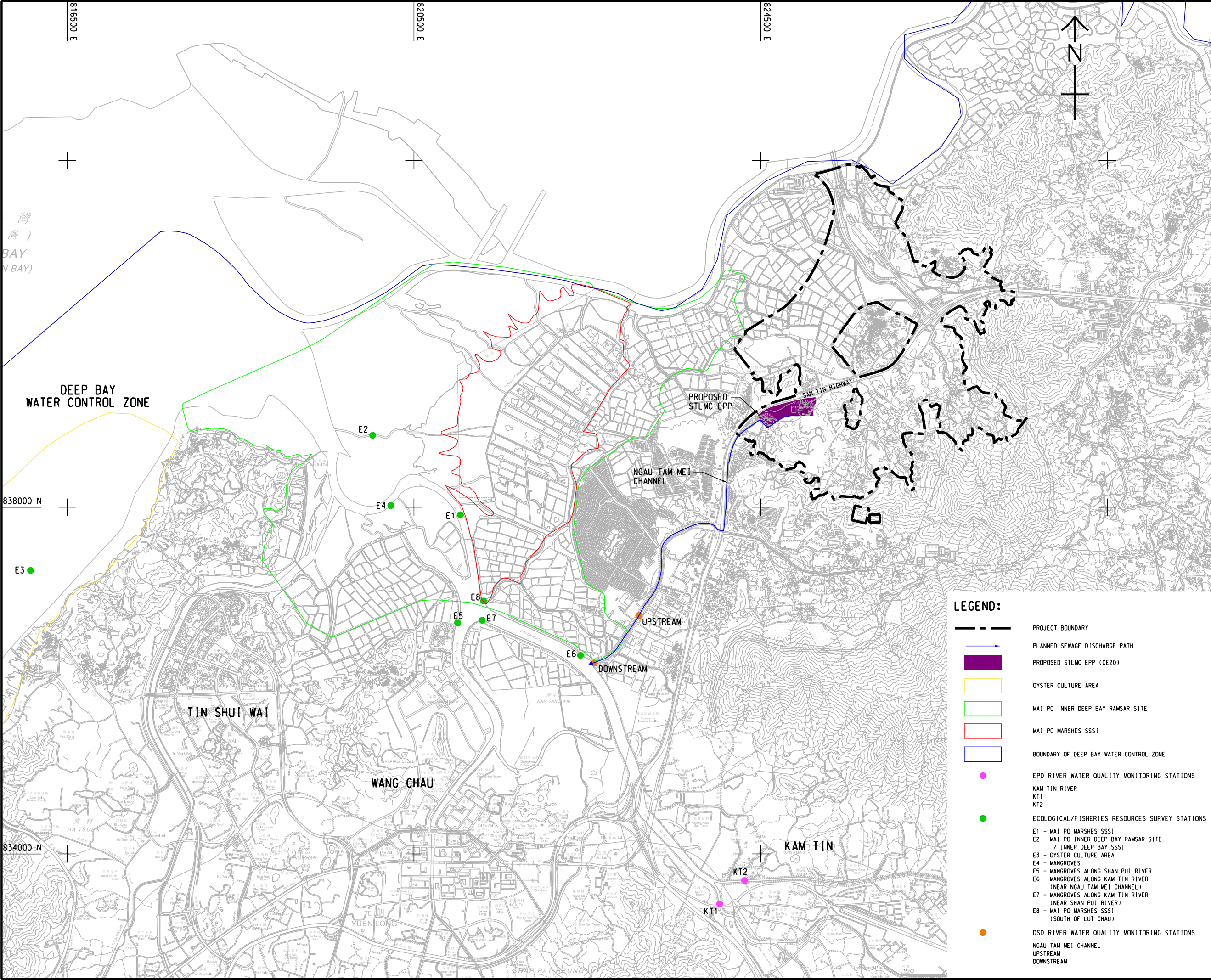


ISO A1 594mm x 841mm
Approved:
Checked:
Designer:
Project Management Initials:
Plotted by: Tang E
2023/7/27
PATH P:\PROJECTS\60670882\DRAWING\REPORT\A34\A34_564.dgn



LEGEND:

- PROJECT BOUNDARY
- PLANNED SEWAGE DISCHARGE PATH
- PROPOSED STL MC EPP (CE20)
- OYSTER CULTURE AREA
- MAI PO INNER DEEP BAY RAMSAR SITE
- MAI PO MARSHES SSSI
- BOUNDARY OF DEEP BAY WATER CONTROL ZONE
- EPD RIVER WATER QUALITY MONITORING STATIONS
KAM TIN RIVER
KT1
KT2
- ECOLOGICAL/FISHERIES RESOURCES SURVEY STATIONS
E1 - MAI PO MARSHES SSSI
E2 - MAI PO INNER DEEP BAY RAMSAR SITE / INNER DEEP BAY SSSI
E3 - OYSTER CULTURE AREA
E4 - MANGROVES
E5 - MANGROVES ALONG SHAN PUI RIVER
E6 - MANGROVES ALONG KAM TIN RIVER (NEAR NGAU TAM MEI CHANNEL)
E7 - MANGROVES ALONG KAM TIN RIVER (NEAR SHAN PUI RIVER)
E8 - MAI PO MARSHES SSSI (SOUTH OF LUT CHAU)
- DSD RIVER WATER QUALITY MONITORING STATIONS
NGAU TAM MEI CHANNEL
UPSTREAM
DOWNSTREAM



PROJECT

FIRST PHASE DEVELOPMENT OF
THE NEW TERRITORIES NORTH –
SAN TIN / LOK MA CHAU
DEVELOPMENT NODE –
INVESTIGATION

CLIENT



CONSULTANT

AECOM Asla Company Ltd.
www.aecom.com

SUB-CONSULTANTS

ISSUE/REVISION

| NO. | DATE | DESCRIPTION | CHK. |
|-----|------|-------------|------|
| | | | |
| | | | |
| | | | |
| | | | |

STATUS

SCALE

A3 1: 40000

DIMENSION UNIT

METRES

KEY PLAN

PROJECT NO.

60670882

AGREEMENT NO.

CE 20/2021

SHEET TITLE

INDICATIVE LOCATIONS OF
MARINE WATER SENSITIVE
RECEIVERS AND WATER QUALITY
MONITORING STATIONS

SHEET NUMBER

60670882/A34/APPENDIX 5.1