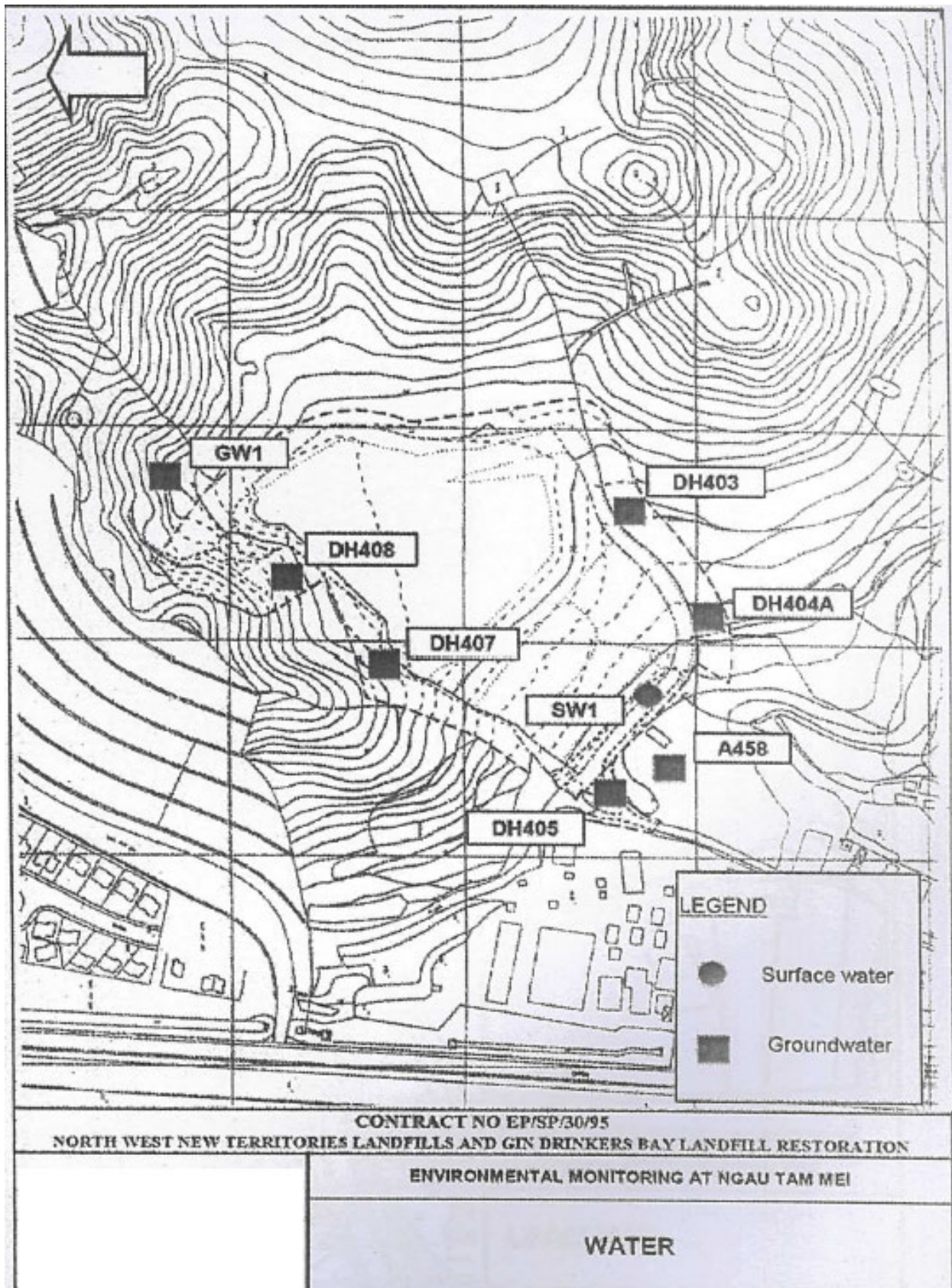


Location Map of  
Landfill Gas Migration (Ngau Tam Mei)



Location Map of Groundwater Monitoring (Ngau Tam Mei)



North-west New Territories Landfills and Gin Drinkers Bay Landfill Restoration  
 Contract No. EP/SP/30/95

**LANDFILL GAS MONITORING - FIELD MEASUREMENT**

**Name of Site :** Ngau Tam Mei                      **Equipment Used:** Landtec GEM-2000  
**Date of Monitoring:** 16-Aug-19  
**Weather Condition:** Cloudy

Well No.	Time	Methane (%)	Carbon Dioxide (%)	Oxygen (%)	Temperature (°C)	Relative Pressure (mbar)	Remark
A451	13:49	<0.1	8.4	9.5	31.1	0	
A452	14:17	0.3	10.0	7.5	32.5	0	
A453	14:21	<0.1	4.1	15.5	30.1	0	
A454	14:34	<0.1	6.4	12.7	35.5	0	
A455	13:43	<0.1	1.3	19.0	33.8	0	
A456	13:35	<0.1	7.1	12.8	31.1	0	
A457A	14:11	<0.1	<0.1	12.4	35.1	0	
A458	14:02	<0.1	1.7	19.0	34.5	0	
A459	14:05	<0.1	10.1	7.3	34.2	0	
A460	14:43	<0.1	6.2	11.0	30.8	0	
A461	14:49	<0.1	0.7	19.9	31.1	0	
DH403	14:24	<0.1	2.2	18.6	31.2	0	
DH405	14:38	<0.1	5.5	15.9	32.8	0	
DH407	13:31	<0.1	6.0	13.4	30.3	0	
DH408	13:38	<0.1	4.3	16.1	35.8	0	





**LANDFILL GAS MONITORING - FIELD MEASUREMENT**

**Name of Site :** Ngau Tam Mei                      **Equipment Used:** Landfill gas monitor  
**Date of Monitoring:** 6-Nov-19                      **GEM-2000**  
**Weather Condition:** Cloudy

Well No.	Time	Methane (%)	Carbon Dioxide (%)	Oxygen (%)	Temperature (°C)	Relative Pressure (mbar)	Remark
A451	14:26	<0.1	4.2	15.7	23.2	0	
A452	14:17	<0.1	14.1	3.6	22.1	0	
A453	14:11	<0.1	3.1	16.9	22.9	0	
A454	13:49	<0.1	16.6	0.3	33.1	0	
A455	14:46	<0.1	<0.1	20.2	25.5	0	
A456	14:34	<0.1	2.6	18.2	24.9	0	
A457A	14:07	<0.1	<0.1	10.8	30.3	0	
A458	13:59	<0.1	8.6	12.2	29.4	0	
A459	14:03	<0.1	12.6	9.2	26.8	0	
A460	13:41	<0.1	10.1	5.8	25.4	0	
A461	13:44	<0.1	5.1	15.5	24.2	0	
DH403	14:53	<0.1	1.8	18.9	25.4	0	
DH405	13:37	<0.1	5.7	16.0	28.3	0	
DH407	14:30	<0.1	6.2	11.5	23.8	0	
DH408	14:41	<0.1	1.3	19.0	30.8	0	

North-west New Territories Landfills and Gin Drinkers Bay Landfill Restoration  
 Contract No. EP/SP/30/95

**LANDFILL GAS MONITORING - FIELD MEASUREMENT**

**Name of Site :** Ngau Tam Mei                      **Equipment Used:** Landfill gas monitor  
**Date of Monitoring:** 13-Dec-19                      **GEM-2000**  
**Weather Condition:** Sunny

Well No.	Time	Methane (%)	Carbon Dioxide (%)	Oxygen (%)	Temperature (°C)	Relative Pressure (mbar)	Remark
A451	14:26	<0.1	8.6	12.7	19.5	0	
A452	14:24	<0.1	15.8	1.7	19.7	0	
A453	14:20	<0.1	2.5	19.0	20.9	0	
A454	14:13	<0.1	16.3	3.9	30.2	0	
A455	14:40	<0.1	7.4	12.5	24.1	0	
A456	14:31	<0.1	5.7	16.8	23.2	0	
A457A	13:42	<0.1	<0.1	12.1	26.6	0	
A458	13:53	<0.1	8.5	11.7	26.7	0	
A459	13:57	<0.1	11.0	12.6	27.1	0	
A460	14:06	<0.1	10.2	9.9	22.7	0	
A461	14:08	<0.1	4.7	17.3	24.0	0	
DH403	14:51	<0.1	6.6	15.6	24.4	0	
DH405	14:03	<0.1	2.7	18.5	25.6	0	
DH407	14:35	<0.1	5.4	14.7	22.8	0	
DH408	14:28	<0.1	0.9	20.3	29.7	0	
NTMOSB1	13:29	<0.1	<0.1	20.5	24.2	0	
NTMOSB2	13:31	<0.1	<0.1	20.6	22.8	0	
NTMOSB3	13:32	<0.1	<0.1	20.7	24.4	0	
NTMOSB4	13:33	<0.1	<0.1	20.7	23.8	0	
NTMOSB5	13:34	<0.1	<0.1	20.6	25.1	0	
NTMOSB6	13:36	<0.1	<0.1	20.1	31.7	0	











































**North-west New Territories Landfills and Gin Drinkers Bay Landfill Restoration**  
**Contract No. EP/SP/30/95**

**GROUNDWATER MONITORING – FIELD MEASUREMENT FOR CALCULATION OF ELEVATION**

**Name of Site** : Ngau Tam Mei

**Date of Monitoring** : 16-Aug-2019

**Weather Conditions** : Cloudy

**Equipment used :**

Water Level Indicator  
(Global Water Instrumentation Limited)

Monitoring Location	Time	Depth (m) *	Remarks
A458	14:03	4.33	
DH403	14:25	16.12	
DH404A	14:27	8.40	
DH405	14:39	6.33	
DH407	13:32	24.15	
DH408	13:39	20.98	
GW1	14:20	18.13	

\*Measured from top of cover on monitoring well head box

**North-west New Territories Landfills and Gin Drinkers Bay Landfill Restoration**  
**Contract No. EP/SP/30/95**

**GROUNDWATER MONITORING – FIELD MEASUREMENT FOR CALCULATION OF ELEVATION**

**Name of Site** : Ngau Tam Mei

**Date of Monitoring** : 6-Nov-2019

**Weather Conditions** : Cloudy

**Equipment used :**

Water Level Indicator  
(Global Water Instrumentation Limited)

Monitoring Location	Time	Depth (m) *	Remarks
A458	14:00	6.99	
DH403	14:54	17.04	
DH404A	14:59	10.53	
DH405	13:38	7.33	
DH407	14:31	23.28	
DH408	14:42	20.66	
GW1	14:22	18.47	

\*Measured from top of cover on monitoring well head box

**North-west New Territories Landfills and Gin Drinkers Bay Landfill Restoration**  
**Contract No. EP/SP/30/95**

**GROUNDWATER MONITORING – FIELD MEASUREMENT FOR CALCULATION OF ELEVATION**

**Name of Site** : Ngau Tam Mei

**Date of Monitoring** : 19-Feb-2020

**Weather Conditions** : Sunny

**Equipment used :**

Water Level Indicator  
(Global Water Instrumentation Limited)

Monitoring Location	Time	Depth (m) *	Remarks
A458	14:04	8.57	
DH403	13:30	19.12	
DH404A	13:37	13.04	
DH405	13:47	8.73	
DH407	13:08	25.07	
DH408	13:13	22.19	
GW1	13:23	20.50	

\*Measured from top of cover on monitoring well head box

**North-west New Territories Landfills and Gin Drinkers Bay Landfill Restoration**  
**Contract No. EP/SP/30/95**

**GROUNDWATER MONITORING – FIELD MEASUREMENT FOR CALCULATION OF ELEVATION**

**Name of Site** : Ngau Tam Mei

**Date of Monitoring** : 14-May-2020

**Weather Conditions** : Sunny

**Equipment used :**

Water Level Indicator  
(Global Water Instrumentation Limited)

Monitoring Location	Time	Depth (m) *	Remarks
A458	10:06	9.18	
DH403	10:15	19.94	
DH404A	10:10	13.85	
DH405	9:38	9.23	
DH407	10:36	26.07	
DH408	10:45	-	Dry
GW1	10:25	21.28	

\*Measured from top of cover on monitoring well head box

**North-west New Territories Landfills and Gin Drinkers Bay Landfill Restoration**  
**Contract No. EP/SP/30/95**

**GROUNDWATER MONITORING – FIELD MEASUREMENT FOR CALCULATION OF ELEVATION**

**Name of Site** : Ngau Tam Mei

**Date of Monitoring** : 14-Aug-2020

**Weather Conditions** : Sunny

**Equipment used :**

Water Level Indicator  
(In-Situ)

Monitoring Location	Time	Depth (m) *	Remarks
A458	14:11	4.02	
DH403	14:39	19.52	
DH404A	14:33	12.25	
DH405	14:18	7.64	
DH407	14:57	26.40	
DH408	15:04	22.76	
GW1	14:50	21.62	

\*Measured from top of cover on monitoring well head box

**North-west New Territories Landfills and Gin Drinkers Bay Landfill Restoration**  
**Contract No. EP/SP/30/95**

**GROUNDWATER MONITORING – FIELD MEASUREMENT FOR CALCULATION OF ELEVATION**

**Name of Site** : Ngau Tam Mei

**Date of Monitoring** : 18-Nov-2020

**Weather Conditions** : Cloudy

**Equipment used :**

Water Level Indicator  
(In-Situ)

Monitoring Location	Time	Depth (m) *	Remarks
A458	15:01	8.09	
DH403	14:27	19.31	
DH404A	14:29	12.85	
DH405	14:35	8.29	
DH407	14:02	26.15	
DH408	14:10	22.66	
GW1	13:45	20.47	

\*Measured from top of cover on monitoring well head box



**North-west New Territories Landfills and Gin Drinkers Bay Landfill Restoration**  
**Contract No. EP/SP/30/95**

**GROUNDWATER MONITORING – FIELD MEASUREMENT FOR CALCULATION OF ELEVATION**

**Name of Site** : Ngau Tam Mei

**Date of Monitoring** : 5-Feb-2021

**Weather Conditions** : Sunny

**Equipment used :**

Water Level Indicator  
(In-Situ)

Monitoring Location	Time	Depth (m) *	Remarks
A458	14:58	8.94	
DH403	14:20	20.22	
DH404A	14:25	13.98	
DH405	14:33	8.74	
DH407	13:51	-	Dry
DH408	14:02	-	Dry
GW1	13:40	21.05	

\*Measured from top of cover on monitoring well head box

**North-west New Territories Landfills and Gin Drinkers Bay Landfill Restoration**  
**Contract No. EP/SP/30/95**

**GROUNDWATER MONITORING – FIELD MEASUREMENT FOR CALCULATION OF ELEVATION**

**Name of Site** : Ngau Tam Mei

**Date of Monitoring** : 18-May-2021

**Weather Conditions** : Sunny

**Equipment used :**

Water Level Indicator  
(In-Situ)

Monitoring Location	Time	Depth (m) *	Remarks
A458	14:41	9.45	
DH403	13:52	20.71	
DH404A	13:48	14.54	
DH405	13:37	9.19	
DH407	14:16	-	Dry
DH408	14:12	-	Dry
GW1	14:02	21.92	

\*Measured from top of cover on monitoring well head box