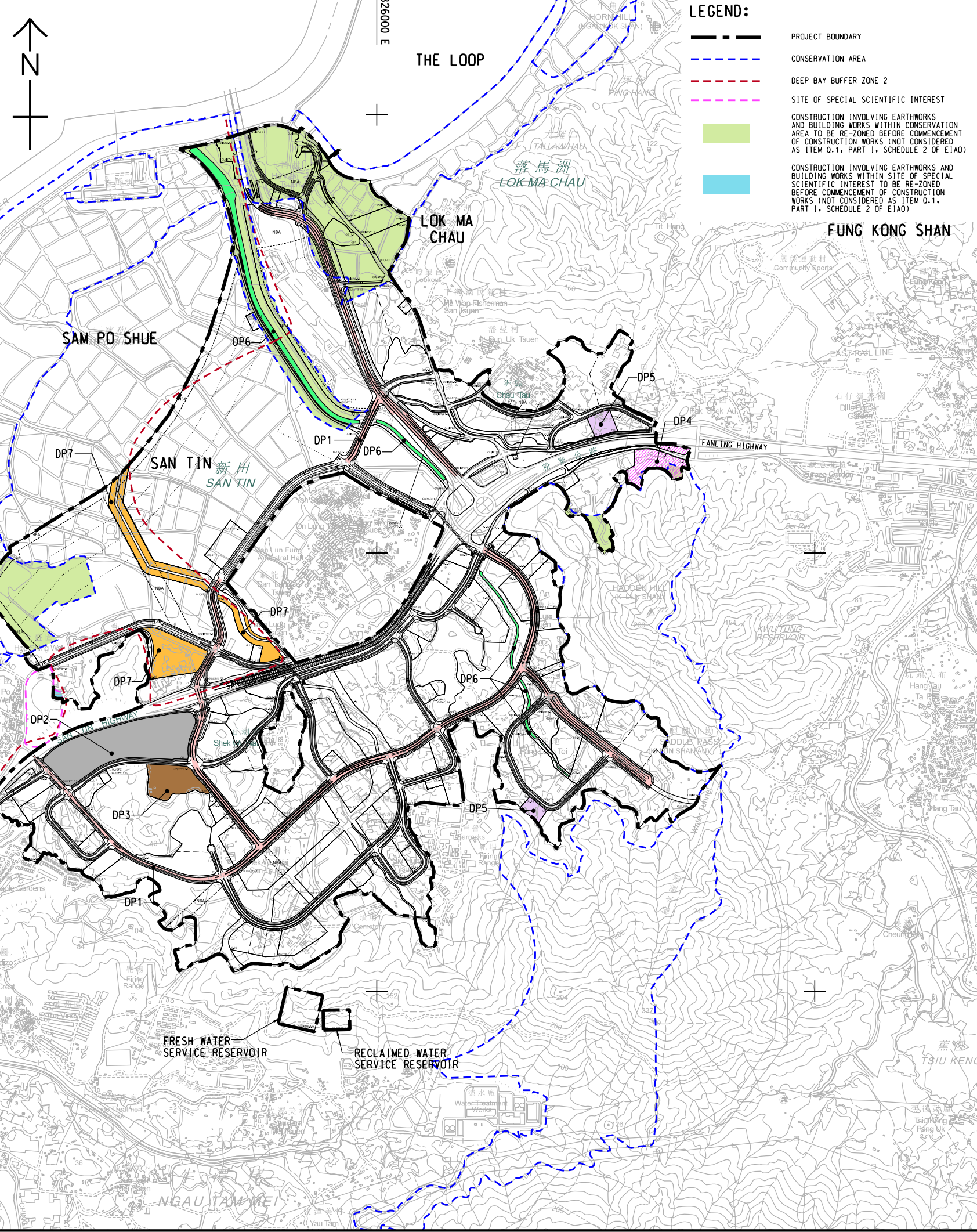


ISO A1 594mm x 841mm
 Approved:
 Checked:
 Designer:
 Project Management Initials:
 Plot File by: Wuming_Zeng/2023/12/15
 PATH: P:\PROJECTS\60670882\DRAWING\REPORT\A34\A34_SSE.dwg

DESIGNATED PROJECT REFERENCE

DESIGNATED PROJECT REFERENCE NOS.	SCHEDULE 2 DESIGNATED PROJECT	WORK COMPONENT / REFERENCE IN REVISED RODP
DP1 ¹	PART 1, A.1 A CARRIAGEWAY FOR MOTOR VEHICLES THAT IS AN EXPRESSWAY, TRUNK ROAD, PRIMARY DISTRIBUTOR ROAD OR DISTRICT DISTRIBUTOR ROAD	CONSTRUCTION AND OPERATION OF PRIMARY DISTRIBUTOR ROAD P1, DISTRICT DISTRIBUTOR ROAD D1, D2, D3, D4, D5 AND D6
DP2 ¹	PART 1, F.1 SEWAGE TREATMENT WORKS WITH AN INSTALLED CAPACITY OF MORE THAN 15,000 M ³ PER DAY	CONSTRUCTION AND OPERATION OF STLMC EFFLUENT POLISHING PLANT AND FOOD WASTE PRE-TREATMENT FACILITIES
DP3 ¹	PART 1, F.2 SEWAGE TREATMENT WORKS WITH AN INSTALLED CAPACITY OF MORE THAN 5,000 M ³ PER DAY; AND A BOUNDARY OF WHICH IS LESS THAN 200 M FROM THE NEAREST BOUNDARY OF AN EXISTING OR PLANNED RESIDENTIAL AREA AND EDUCATIONAL INSTITUTION	CONSTRUCTION AND OPERATION OF STLMC EFFLUENT POLISHING PLANT AND FOOD WASTE PRE-TREATMENT FACILITIES
DP4 ²	PART 1, G.2 A FACILITY FOR GENERATING, FROM SEWAGE EFFLUENT TREATED BY A SEWAGE TREATMENT PLANT, RECLAIMED WATER FOR USE BY THE GENERAL PUBLIC	CONSTRUCTION AND OPERATION OF STLMC WATER RECLAMATION PLANT
DP5 ²	PART 1, H.1 A REFUSE TRANSFER STATION	CONSTRUCTION AND OPERATION OF A REFUSE TRANSFER STATION
DP6 ¹	PART 1, I.1 A 400KV ELECTRICITY SUBSTATION AND TRANSMISSION LINE	CONSTRUCTION AND OPERATION OF TWO 400KV ELECTRICITY SUBSTATIONS
DP7 ¹	PART 1, P.1 A DRAINAGE CHANNEL OR RIVER TRAINING AND DIVERSION WORKS LOCATED LESS THAN 300 M FROM THE NEAREST BOUNDARY OF AN EXISTING OR PLANNED CONSERVATION AREA.	REVITALISATION WORKS (I.E. RIVER TRAINING, DIVERSION WORKS) FOR SAN TIN EASTERN MAIN DRAINAGE CHANNEL ARE LOCATED LESS THAN 300M FROM CONSERVATION AREA
DP7 ¹	PART 1, P.1 A RESIDENTIAL OR RECREATIONAL DEVELOPMENT, OTHER THAN NEW TERRITORIES EXEMPTED HOUSES, WITHIN DEEP BAY BUFFER ZONE 2	RECREATIONAL DEVELOPMENT FOR PROPOSED SITES 0.1.1, 0.1.2, AND 0.1.3 (AS OPEN SPACE) ENCR OACH INTO DEEP BAY BUFFER ZONE 2

NOTE: 1 SUBJECT TO AN ENVIRONMENTAL PERMIT APPLICATION FOR BOTH CONSTRUCTION AND OPERATION PHASES OF THE DP UNDER THIS EIA STUDY.
 2 SUBJECT TO SEPARATE EIA STUDY, AS REQUIRED.
 3 THE FUTURE ZONINGS OF THE CONCERNED 'CONSERVATION AREA' ARE SUBJECT TO CHANGE DUE TO LAND USE PROPOSALS AS REFLECTED IN THE REVISED RODP.



AECOM

PROJECT
 FIRST PHASE DEVELOPMENT OF THE NEW TERRITORIES NORTH – SAN TIN / LOK MA CHAU DEVELOPMENT NODE – INVESTIGATION

CLIENT
 土木工程拓展署
 CEDD Civil Engineering and Development Department
 規劃署
 Planning Department

CONSULTANT
 AECOM Asia Company Ltd.
 www.aecom.com

SUB-CONSULTANTS
 中環土庫有限公司

ISSUE/REVISION

IR	DATE	DESCRIPTION	CHK.

STATUS
 預設

SCALE
 A3 1 : 20000

DIMENSION UNIT
 METRES

KEY PLAN
 索引圖

PROJECT NO.
 60670882

AGREEMENT NO.
 CE 20/2021

SHEET TITLE
 LOCATION OF DESIGNATED PROJECTS

SHEET NUMBER
 60670882/A34/FIGURE 1.2

This drawing has been prepared for the use of AECOM's client. It may not be used, modified, reproduced or relied upon by third parties, except as agreed by AECOM or as required by law. AECOM accepts no responsibility, and disclaims any liability, whatsoever, for any part, that uses or relies on this drawing without AECOM's express written consent. Do not scale this document. All measurements must be obtained from the stated dimensions.