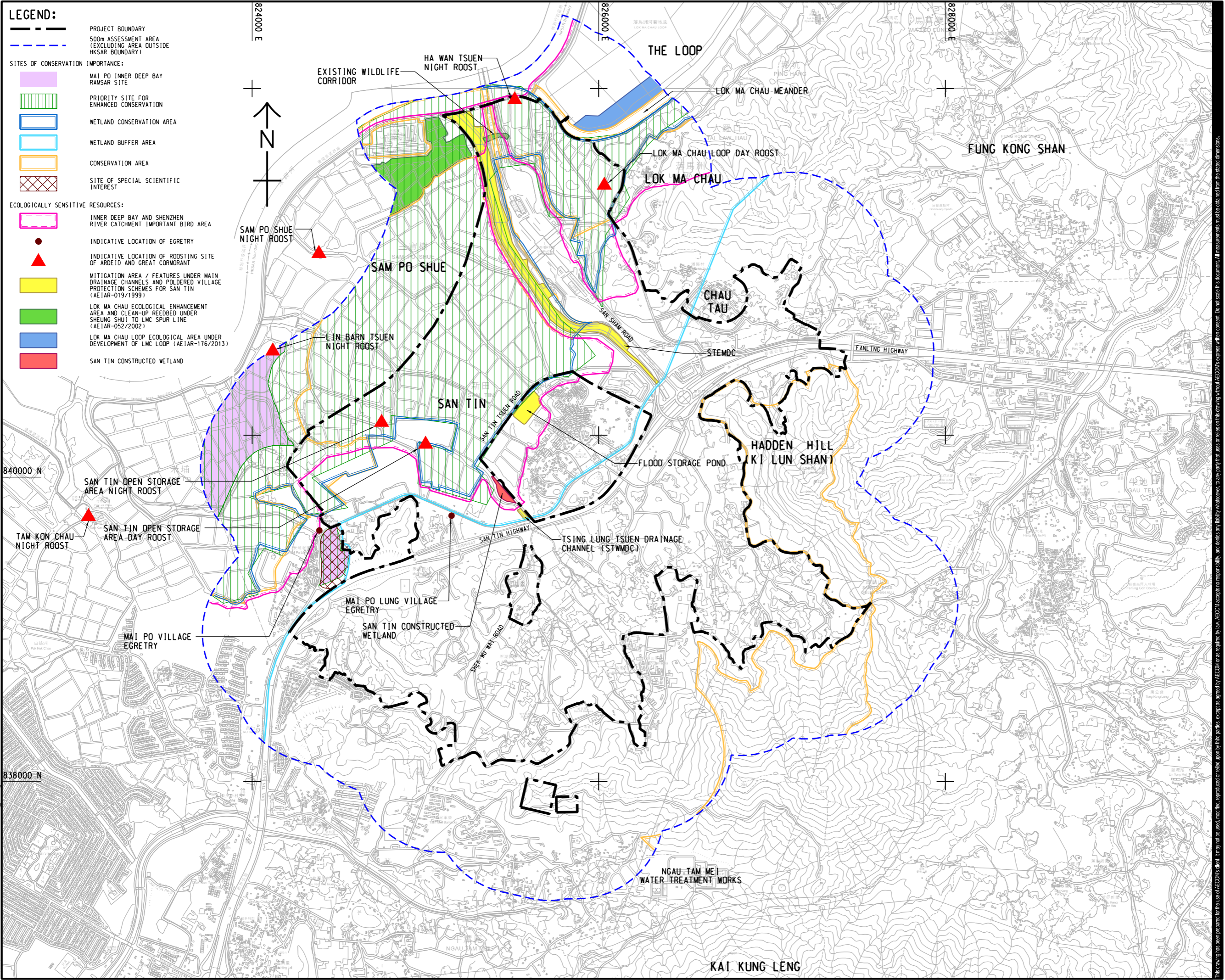


ISO A1 594mm x 841mm
 Approved:
 Checked:
 Designer:
 Project Management Initials:
 2023/12/29
 PATH PROJECTS/60670882/DRAWINGREPORT/A34/A34_661.dwg



- LEGEND:**
- PROJECT BOUNDARY
 - - - 500m ASSESSMENT AREA (EXCLUDING AREA OUTSIDE HKSAR BOUNDARY)
- SITES OF CONSERVATION IMPORTANCE:**
- MAI PO INNER DEEP BAY RAMSAR SITE
 - PRIORITY SITE FOR ENHANCED CONSERVATION
 - WETLAND CONSERVATION AREA
 - WETLAND BUFFER AREA
 - CONSERVATION AREA
 - SITE OF SPECIAL SCIENTIFIC INTEREST
- ECOLOGICALLY SENSITIVE RESOURCES:**
- INNER DEEP BAY AND SHENZHEN RIVER CATCHMENT IMPORTANT BIRD AREA
 - INDICATIVE LOCATION OF EGRETRY
 - INDICATIVE LOCATION OF ROOSTING SITE OF ARDEID AND GREAT CORMORANT
 - MITIGATION AREA / FEATURES UNDER MAIN DRAINAGE CHANNELS AND POLDERED VILLAGE PROTECTION SCHEMES FOR SAN TIN (AEIAR-019/1999)
 - LOK MA CHAU ECOLOGICAL ENHANCEMENT AREA AND CLEAN-UP REEBED UNDER SHEUNG SHUI TO LMC SPUR LINE (AEIAR-052/2002)
 - LOK MA CHAU LOOP ECOLOGICAL AREA UNDER DEVELOPMENT OF LMC LOOP (AEIAR-176/2013)
 - SAN TIN CONSTRUCTED WETLAND



PROJECT
 項目
 FIRST PHASE DEVELOPMENT OF THE NEW TERRITORIES NORTH – SAN TIN / LOK MA CHAU DEVELOPMENT NODE – INVESTIGATION

CLIENT
 業主
 CEDD 土木工程拓展署
 Civil Engineering and Development Department
 規劃署
 Planning Department

CONSULTANT
 顧問公司
 AECOM Asia Company Ltd.
 www.aecom.com

SUB-CONSULTANTS
 分判工程師/顧問公司

ISSUE/REVISION
 修訂

IR	DATE	DESCRIPTION	CHK.

STATUS
 階段

SCALE
 比例
 A3 1 : 20000

DIMENSION UNIT
 尺寸單位
 METRES

KEY PLAN
 索引圖

PROJECT NO.
 項目編號
 60670882

AGREEMENT NO.
 協議編號
 CE 20/2021

SHEET TITLE
 圖紙名稱
 ASSESSMENT AREA FOR ECOLOGY AND SITES OF CONSERVATION IMPORTANCE

SHEET NUMBER
 圖紙編號
 60670882/A34/FIGURE 10.1

This drawing has been prepared for the use of AECOM's client. It may not be used, modified, reproduced or relied upon by third parties, except as agreed by AECOM or as required by law. AECOM accepts no responsibility, and disclaims any liability whatsoever, for any part, that uses or relies on this drawing without AECOM's express written consent. All measurements must be obtained from the stated dimensions.