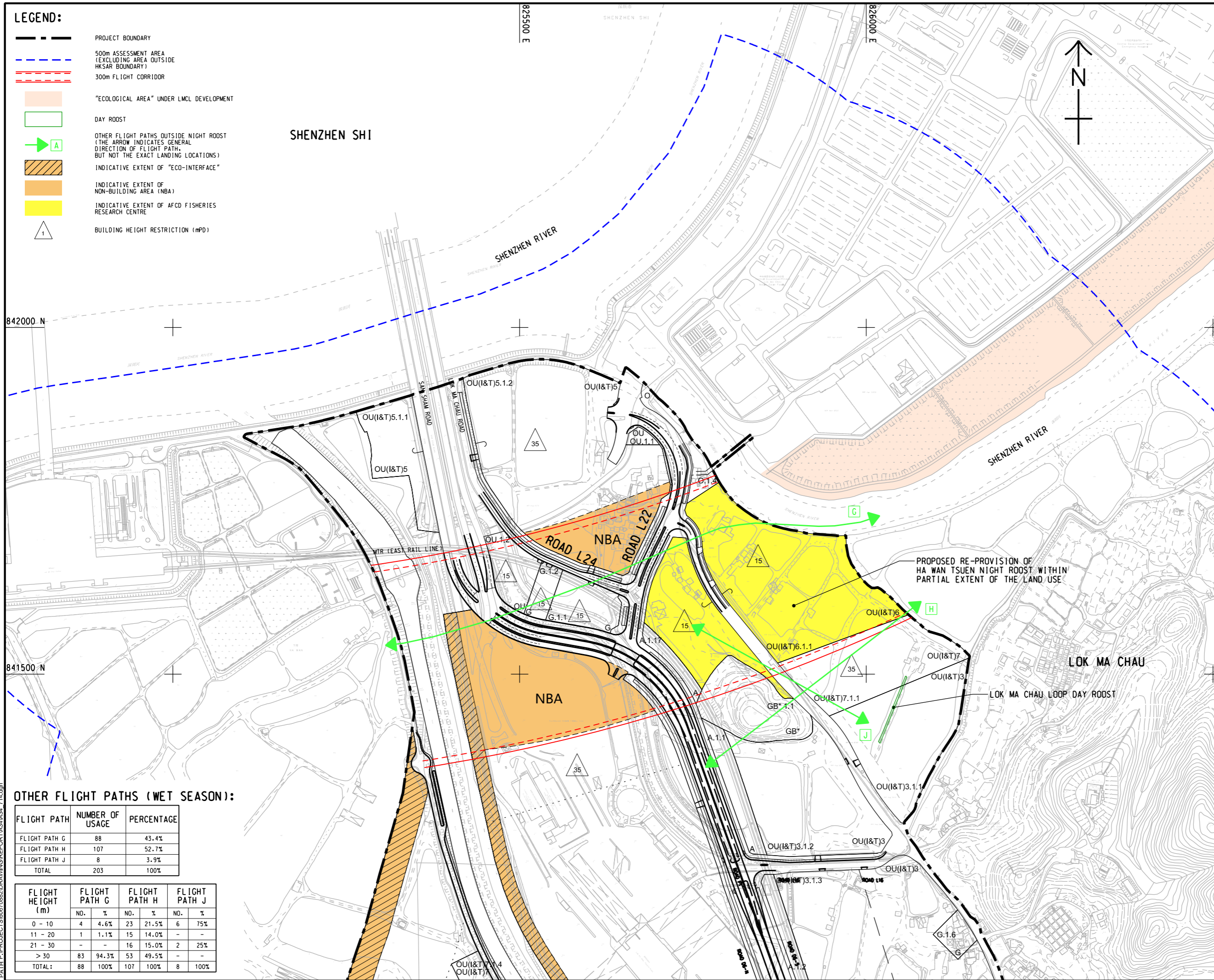


- LEGEND:**
- PROJECT BOUNDARY
 - 500m ASSESSMENT AREA (EXCLUDING AREA OUTSIDE HKSAR BOUNDARY)
 - 300m FLIGHT CORRIDOR
 - "ECOLOGICAL AREA" UNDER LMCL DEVELOPMENT
 - DAY ROOST
 - OTHER FLIGHT PATHS OUTSIDE NIGHT ROOST (THE ARROW INDICATES GENERAL DIRECTION OF FLIGHT PATH, BUT NOT THE EXACT LANDING LOCATIONS)
 - INDICATIVE EXTENT OF "ECO-INTERFACE"
 - INDICATIVE EXTENT OF NON-BUILDING AREA (NBA)
 - INDICATIVE EXTENT OF AFCD FISHERIES RESEARCH CENTRE
 - BUILDING HEIGHT RESTRICTION (mPD)

SHENZHEN SHI



OTHER FLIGHT PATHS (WET SEASON):

FLIGHT PATH	NUMBER OF USAGE	PERCENTAGE
FLIGHT PATH G	88	43.4%
FLIGHT PATH H	107	52.7%
FLIGHT PATH J	8	3.9%
TOTAL	203	100%

FLIGHT HEIGHT (m)	FLIGHT PATH G		FLIGHT PATH H		FLIGHT PATH J	
	NO.	%	NO.	%	NO.	%
0 - 10	4	4.6%	23	21.5%	6	75%
11 - 20	1	1.1%	15	14.0%	-	-
21 - 30	-	-	16	15.0%	2	25%
> 30	83	94.3%	53	49.5%	-	-
TOTAL:	88	100%	107	100%	8	100%



PROJECT
 項目
 FIRST PHASE DEVELOPMENT OF THE NEW TERRITORIES NORTH – SAN TIN / LOK MA CHAU DEVELOPMENT NODE – INVESTIGATION

CLIENT
 業主
 土木工程拓展署
 Civil Engineering and Development Department
 規劃署
 Planning Department

CONSULTANT
 工程顧問公司
 AECOM Asia Company Ltd.
 www.aecom.com

SUB-CONSULTANTS
 分判工程師/顧問公司

ISSUE/REVISION
 修訂

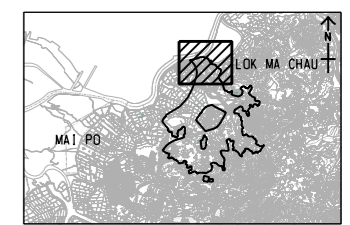
IR	DATE	DESCRIPTION	CHK.

STATUS
 階段

SCALE
 比例
 A3 1 : 5000

DIMENSION UNIT
 尺寸單位
 METRES

KEY PLAN A3 1 : 250000
 索引圖



PROJECT NO.
 項目編號
 60670882

AGREEMENT NO.
 協議編號
 CE 20/2021

SHEET TITLE
 圖紙名稱
 FLIGHT PATHS ACROSS LMC BCP (WET SEASON)

SHEET NUMBER
 圖紙編號
 60670882/A34/FIGURE 10.6D

This drawing has been prepared for the use of AECOM's client. It may not be used, modified, reproduced or relied upon by third parties, except as agreed by AECOM or as required by law. AECOM accepts no responsibility, and disclaims any liability, whatsoever, for any part, that uses or relies on this drawing without AECOM's express written consent. All measurements must be obtained from the stated dimensions.