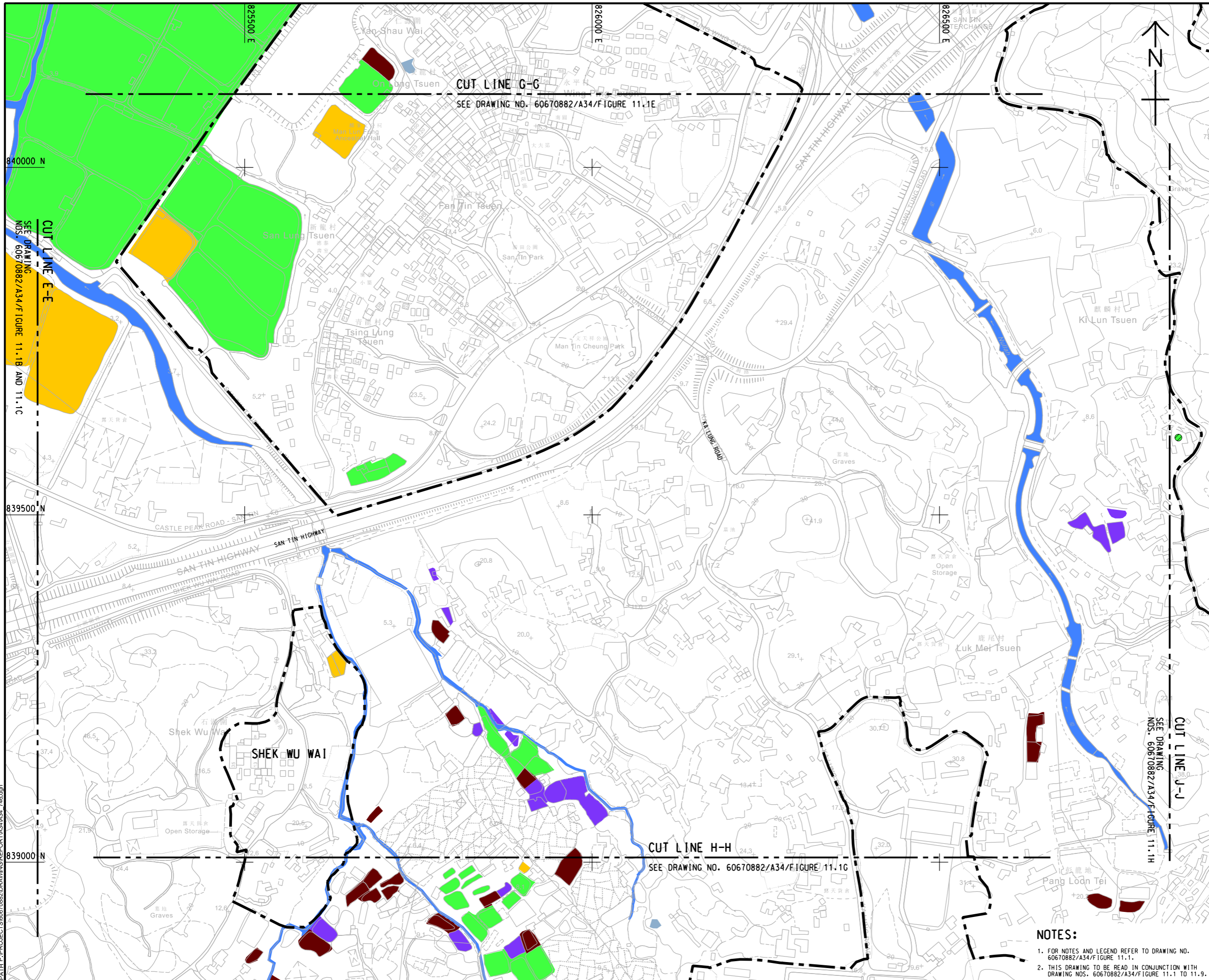


ISO A1 594mm x 841mm
Approved:
Checked:
Designer:
Project Management Initials:
Plot File by: YueFB
DATE: 28/12/2023
PATH: P:\PROJECTS\60670882\DRAWING\REPORT\A3\A34_746.dgn



CUT LINE G-G
SEE DRAWING NO. 60670882/A34/FIGURE 11.1E

SEE DRAWING NOS. 60670882/A34/FIGURE 11.1B AND 11.1C

CUT LINE H-H
SEE DRAWING NO. 60670882/A34/FIGURE 11.1G

SEE DRAWING NOS. 60670882/A34/FIGURE 11.1H

- NOTES:**
1. FOR NOTES AND LEGEND REFER TO DRAWING NO. 60670882/A34/FIGURE 11.1.
 2. THIS DRAWING TO BE READ IN CONJUNCTION WITH DRAWING NOS. 60670882/A34/FIGURE 11.1 TO 11.9.



PROJECT
項目
FIRST PHASE DEVELOPMENT OF THE NEW TERRITORIES NORTH – SAN TIN / LOK MA CHAU DEVELOPMENT NODE – INVESTIGATION

CLIENT
業主
 土木工程拓展署
 Civil Engineering and Development Department
 規劃署
 Planning Department

CONSULTANT
土庫顧問公司
AECOM Asia Company Ltd.
www.aecom.com

SUB-CONSULTANTS
分判土庫顧問公司

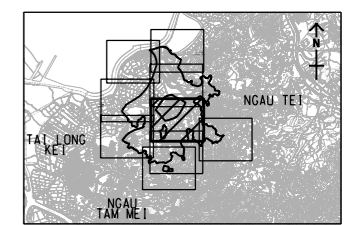
ISSUE/REVISION
修訂

IR	DATE	DESCRIPTION	CHK.
修訂	日期	內容摘要	核對

STATUS
階段

SCALE
比例
A3 1 : 5000
A3 1 : 250000

DIMENSION UNIT
尺寸單位
METRES



PROJECT NO.
項目編號
60670882

AGREEMENT NO.
協議編號
CE 20/2021

SHEET TITLE
圖紙名稱
FISHPONDS WITHIN THE ASSESSMENT AREA

SHEET NUMBER
圖紙編號
60670882/A34/FIGURE 11.1F

This drawing has been prepared for the use of AECOM's client. It may not be used, modified, reproduced or relied upon by third parties, except as agreed by AECOM or as required by law. AECOM accepts no responsibility and disclaims any liability whatsoever, to any party, that uses or relies on this drawing without AECOM's express written consent. All measurements must be obtained from the stated dimensions.