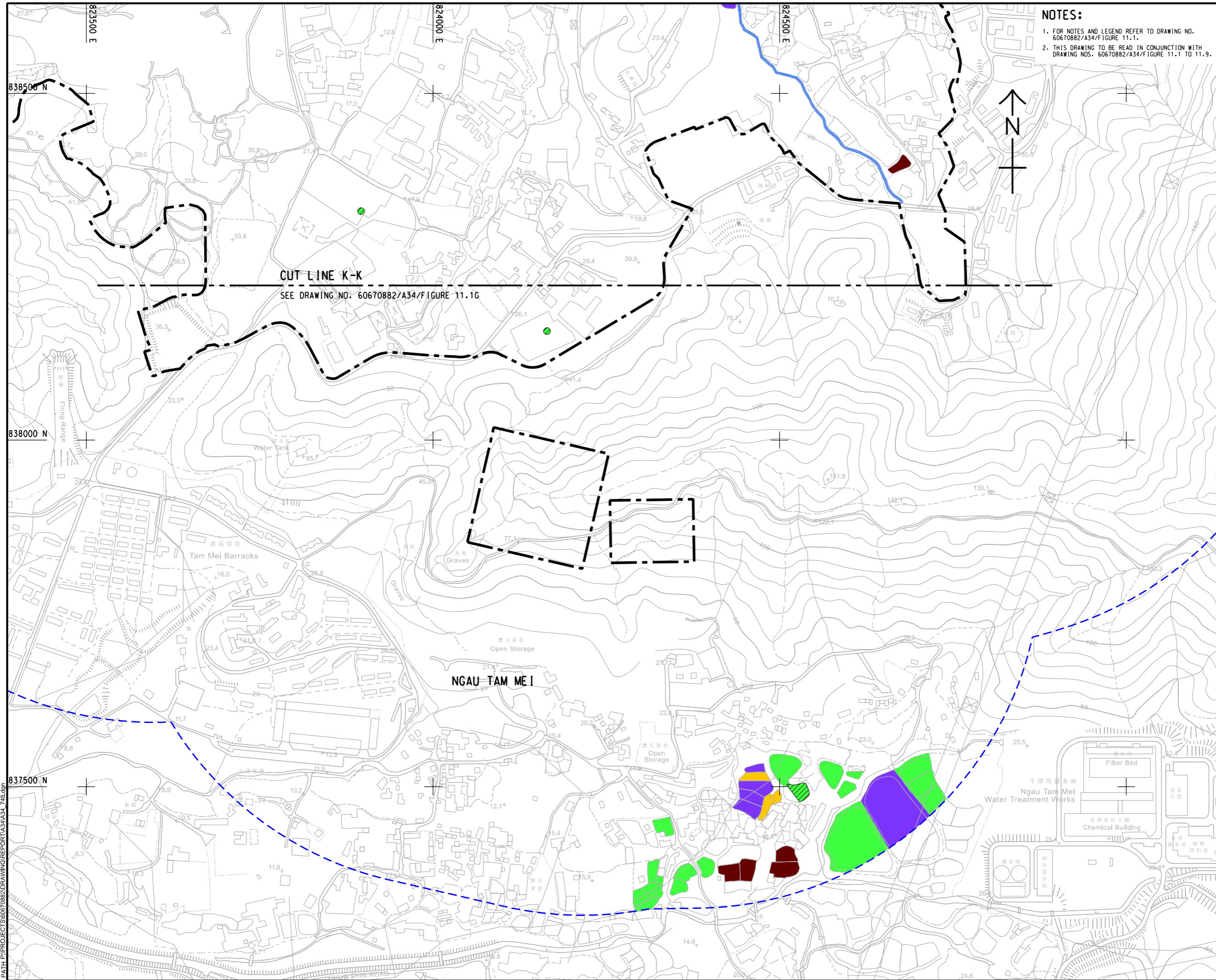


ISO A1 594mm x 841mm
Approved:
Checked:
Designer:
Project Management Initials:



NOTES:
 1. FOR NOTES AND LEGEND REFER TO DRAWING NO. 60670882/A34/Figure 11.1.
 2. THIS DRAWING TO BE READ IN CONJUNCTION WITH DRAWING NOS. 60670882/A34/Figure 11.1 TO 11.9.



PROJECT
 項目
FIRST PHASE DEVELOPMENT OF THE NEW TERRITORIES NORTH – SAN TIN / LOK MA CHAU DEVELOPMENT NODE – INVESTIGATION

CLIENT
 業主
 **土木工程拓展署**
 Civil Engineering and Development Department
 **規劃署**
 Planning Department

CONSULTANT
 工程顧問公司
 AECOM Asia Company Ltd.
 www.aecom.com

SUB-CONSULTANTS
 分判工程顧問公司

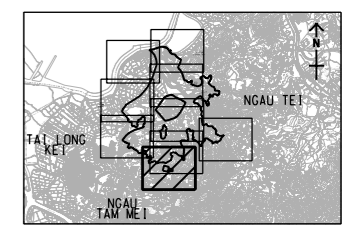
ISSUE/REVISION
 修訂

IR	DATE	DESCRIPTION	CHK.

STATUS
 階段

SCALE
 比例
 A3 1 : 5000

DIMENSION UNIT
 尺寸單位
 METRES



PROJECT NO.
 項目編號
 60670882

AGREEMENT NO.
 協議編號
 CE 20/2021

SHEET TITLE
 圖紙名稱
FISHPONDS WITHIN THE ASSESSMENT AREA

SHEET NUMBER
 圖紙編號
 60670882/A34/Figure 11.1H

SHEET 8 OF 9

Plot File by: YueFB
 28/12/2023
 PATH: P:\PROJECTS\60670882\DRAWING\REPORT\A34\A34_745.dgn

This drawing has been prepared for the use of AECOM's client. It may not be used, modified, reproduced or relied upon by third parties, except as agreed by AECOM or as required by law. AECOM accepts no responsibility, and disclaims any liability, whatsoever, for any gain, loss or damage, or for any claim, arising from this drawing without AECOM's express written consent. All measurements must be obtained from the stated dimensions.