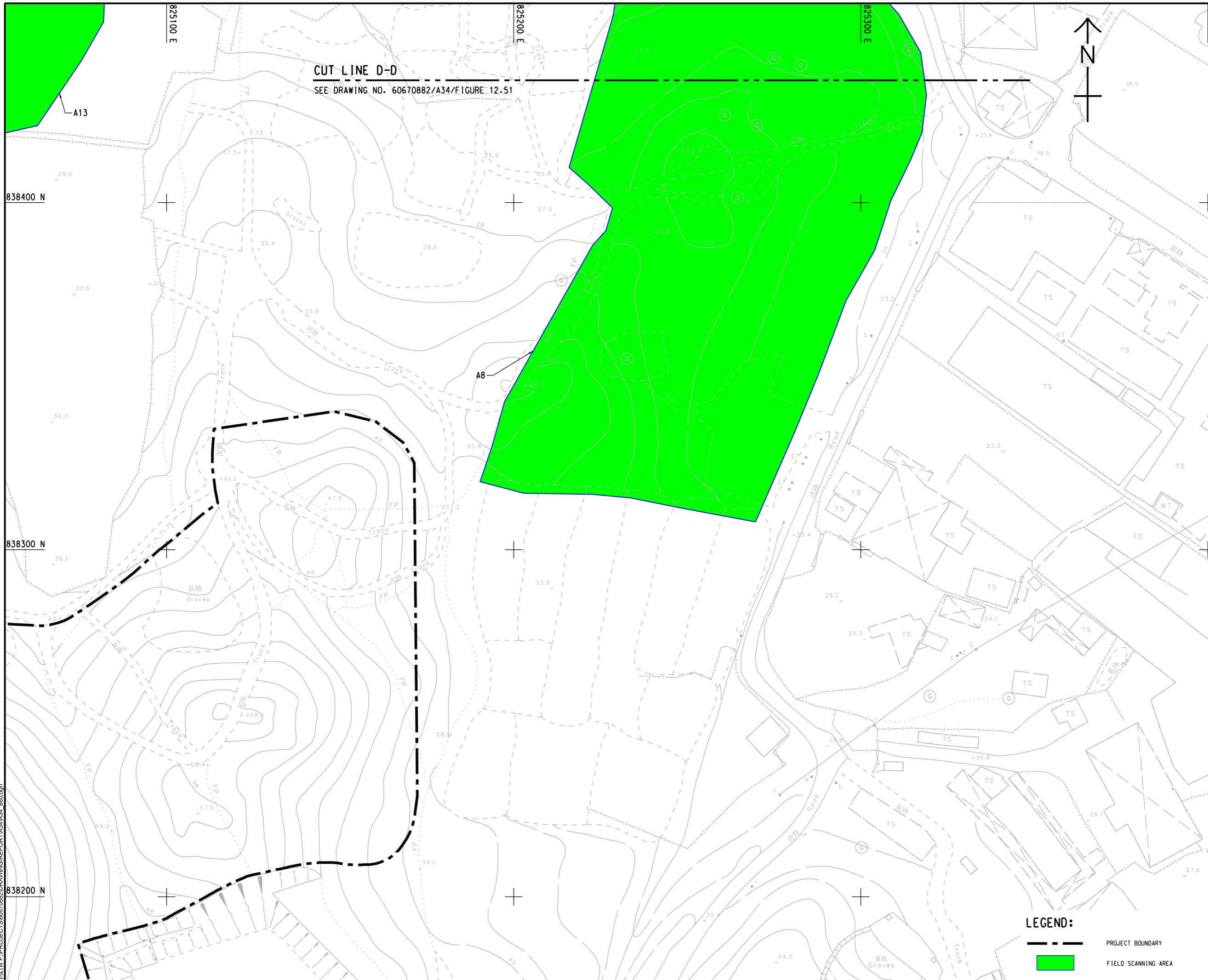


ISO A1 594mm x 841mm
 Approved:
 Checked:
 Designer:
 Project Management Initials:
 2023/11/6
 PATH PROJECTS/60670882/DRAWING/REPORT/A34/A34_880.dgn
 Plot File by: LJO



CUT LINE D-D
SEE DRAWING NO. 60670882/A34/Figure 12.51



LEGEND:

- PROJECT BOUNDARY
- FIELD SCANNING AREA



PROJECT
 項目
FIRST PHASE DEVELOPMENT OF THE NEW TERRITORIES NORTH – SAN TIN / LOK MA CHAU DEVELOPMENT NODE – INVESTIGATION

CLIENT
 業主
土木工程拓展署
 Civil Engineering and Development Department
規劃署
 Planning Department

CONSULTANT
 顧問公司
 AECOM Asia Company Ltd.
 www.aecom.com

SUB-CONSULTANTS
 分判工程師有限公司

ISSUE/REVISION
 修訂

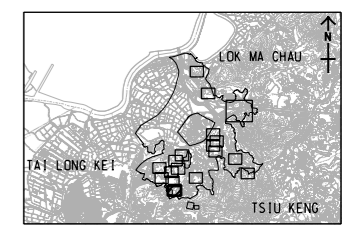
I/R	DATE	DESCRIPTION	CHK.
修訂	日期	內容摘要	核對

STATUS
 階段

SCALE
 比例
 A3 1 : 1000

DIMENSION UNIT
 尺寸單位
 METRES

KEY PLAN A3 1 : 200000
 索引圖



PROJECT NO.
 項目編號
 60670882

AGREEMENT NO.
 協議編號
 CE 20/2021

SHEET TITLE
 圖紙名稱
 FIELD SCANNING AREA A9 (SOUTHEAST)

SHEET NUMBER
 圖紙編號
 60670882/A34/FIGURE 12.50

This drawing has been prepared for the use of AECOM's client. It may not be used, modified, reproduced or relied upon by third parties, except as agreed by AECOM or as required by law. AECOM accepts no responsibility, and denies any liability, whatsoever, to any party, that uses or relies on this drawing without AECOM's express written consent. Do not scale this document. All measurements must be obtained from the stated dimensions.