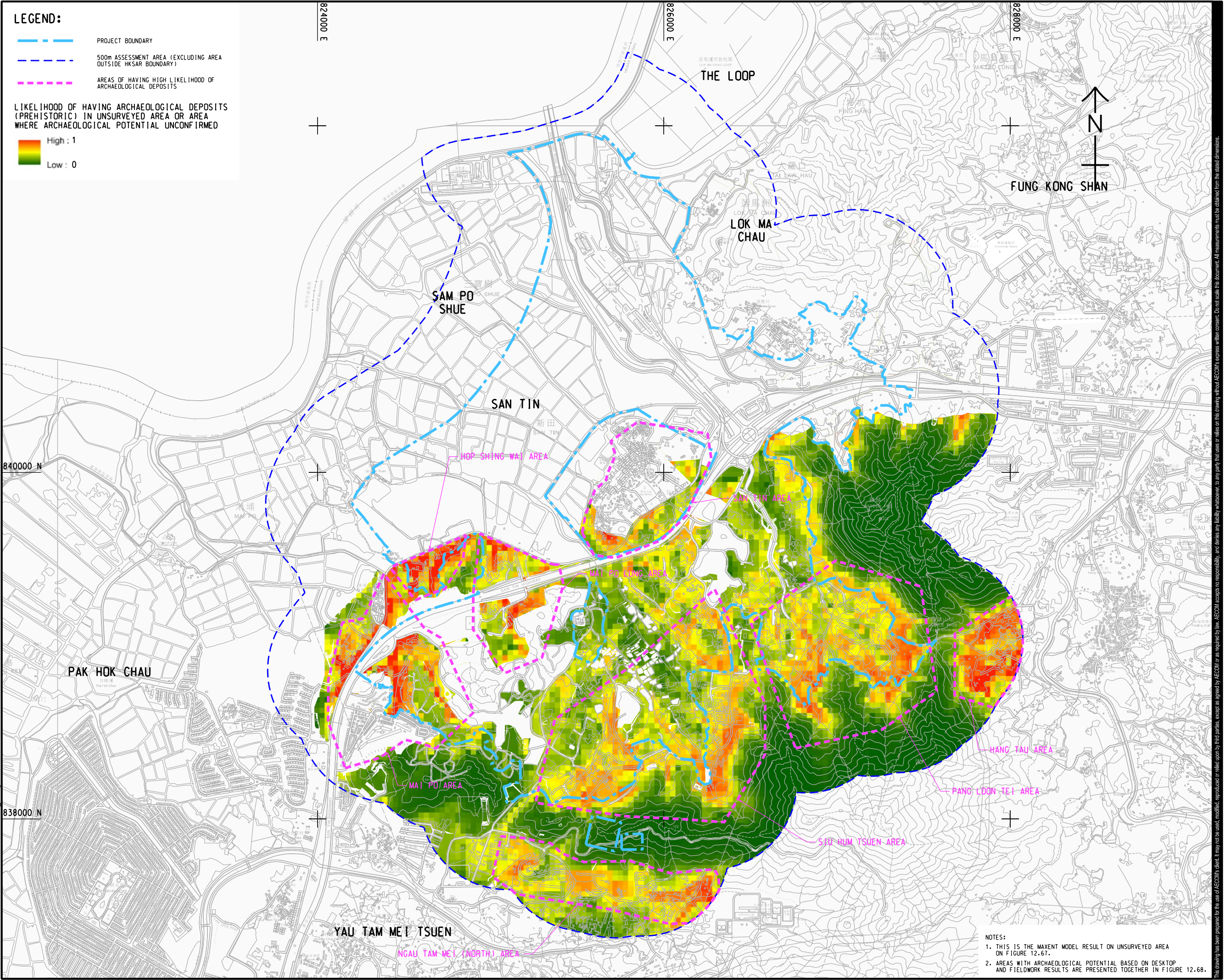


ISO A1 594mm x 841mm
 Approved:
 Checked:
 Designer:
 Project Management Initials:
 Plot File by: YueFB
 PATH P:\PROJECTS\60670882\DRAWING\REPORT\A34\A34_890.dgn



LEGEND:

- PROJECT BOUNDARY
- - - 500m ASSESSMENT AREA (EXCLUDING AREA OUTSIDE HKSAR BOUNDARY)
- - - AREAS OF HAVING HIGH LIKELIHOOD OF ARCHAEOLOGICAL DEPOSITS

LIKELIHOOD OF HAVING ARCHAEOLOGICAL DEPOSITS (PREHISTORIC) IN UNSURVEYED AREA OR AREA WHERE ARCHAEOLOGICAL POTENTIAL UNCONFIRMED

High : 1
 Low : 0



PROJECT
 項目
 FIRST PHASE DEVELOPMENT OF THE NEW TERRITORIES NORTH – SAN TIN / LOK MA CHAU DEVELOPMENT NODE – INVESTIGATION

CLIENT
 業主
 土木工程拓展署
 Civil Engineering and Development Department
 規劃署
 Planning Department

CONSULTANT
 土庫顧問公司
 AECOM Asia Company Ltd.
 www.aecom.com

SUB-CONSULTANTS
 分判土庫顧問公司

ISSUE/REVISION
 修訂

IR	DATE	DESCRIPTION	CHK.

STATUS
 階段

SCALE
 比例
 A3 1 : 20000

DIMENSION UNIT
 尺寸單位
 METRES

KEY PLAN
 索引圖

PROJECT NO.
 項目編號
 60670882

AGREEMENT NO.
 協議編號
 CE 20/2021

SHEET TITLE
 圖紙名稱
 LIKELIHOOD OF HAVING PREHISTORIC ARCHAEOLOGICAL DEPOSITS GENERATED BY MAXENT MODEL

SHEET NUMBER
 圖紙編號
 60670882/A34/FIGURE 12.60

NOTES:

- THIS IS THE MAXENT MODEL RESULT ON UNSURVEYED AREA ON FIGURE 12.67.
- AREAS WITH ARCHAEOLOGICAL POTENTIAL BASED ON DESKTOP AND FIELDWORK RESULTS ARE PRESENTED TOGETHER IN FIGURE 12.68.

This drawing has been prepared for the use of AECOM's client. It may not be used, modified, reproduced or relied upon by third parties, except as agreed by AECOM or as required by law. AECOM accepts no responsibility, and does not warrant, for any part, that users or relies on this drawing without AECOM's express written consent. All measurements must be obtained from the stated dimensions.