

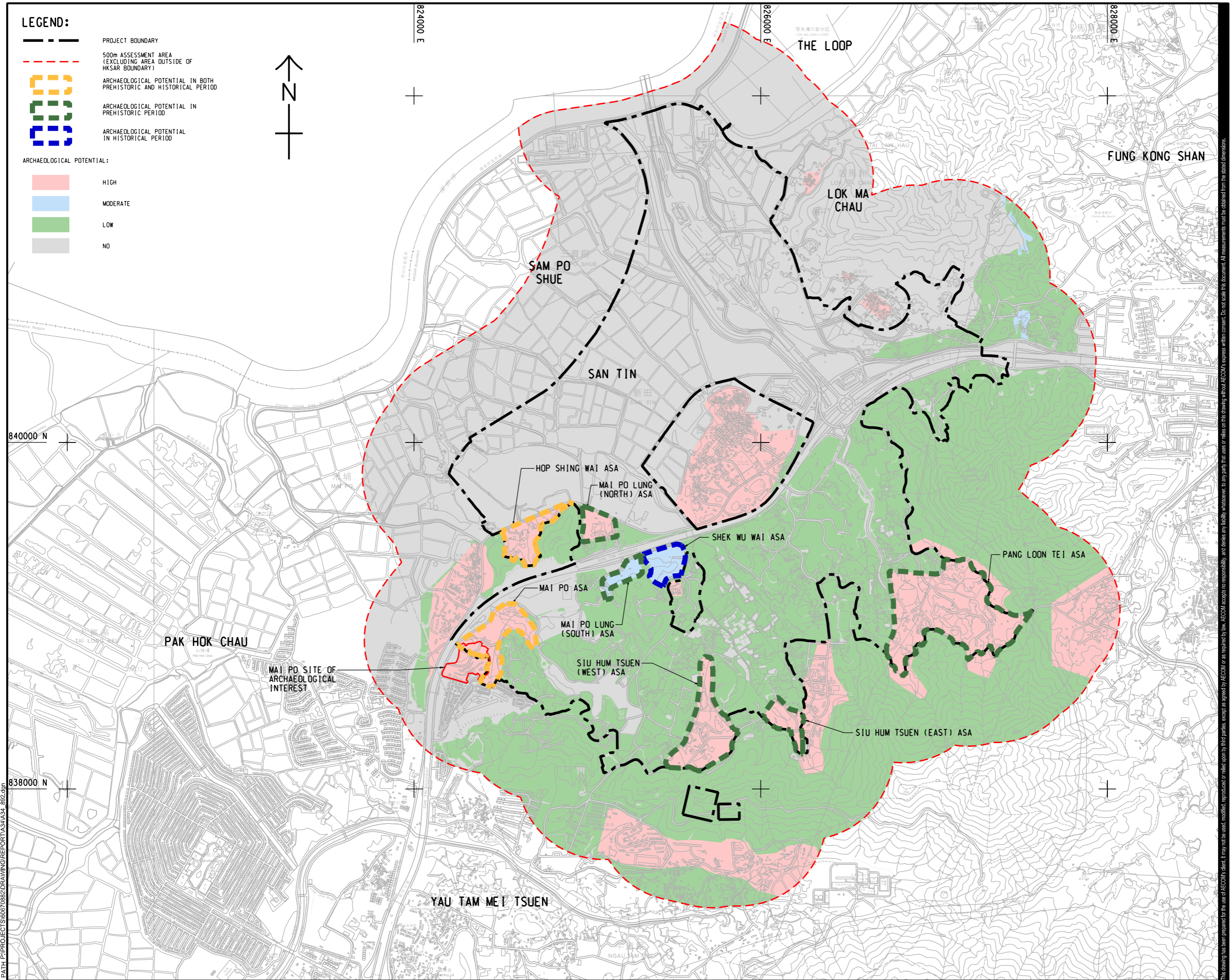
ISO A1 594mm x 841mm
Approved:
Checked:
Designer:
Project Management Initials:

LEGEND:

- PROJECT BOUNDARY
- 500m ASSESSMENT AREA (EXCLUDING AREA OUTSIDE OF HKSAR BOUNDARY)
- ARCHAEOLOGICAL POTENTIAL IN BOTH PREHISTORIC AND HISTORICAL PERIOD
- ARCHAEOLOGICAL POTENTIAL IN PREHISTORIC PERIOD
- ARCHAEOLOGICAL POTENTIAL IN HISTORICAL PERIOD

ARCHAEOLOGICAL POTENTIAL:

- HIGH
- MODERATE
- LOW
- NO



AECOM

PROJECT
 項目
FIRST PHASE DEVELOPMENT OF THE NEW TERRITORIES NORTH – SAN TIN / LOK MA CHAU DEVELOPMENT NODE – INVESTIGATION

CLIENT
 業主
CEDD 土木工程拓展署
 Civil Engineering and Development Department
規劃署
 Planning Department

CONSULTANT
 顧問公司
 AECOM Asia Company Ltd.
 www.aecom.com

SUB-CONSULTANTS
 分判工程師/顧問公司

ISSUE/REVISION

IR	DATE	DESCRIPTION	CHK.

STATUS

SCALE 比例
 A3 1 : 20000

DIMENSION UNIT 尺寸單位
 METRES

KEY PLAN

PROJECT NO. 項目編號
 60670882

AGREEMENT NO. 協議編號
 CE 20/2021

SHEET TITLE 圖紙名稱
 ARCHAEOLOGICAL POTENTIAL WITHIN ASSESSMENT AREA

SHEET NUMBER 圖紙編號
 60670882/A34/FIGURE 12.62

Plot File by: YueFB 10/12/2024
 PATH P:\PROJECTS\60670882\DRAWING\REPORT\A34\A34_892.dgn

This drawing has been prepared for the use of AECOM's client. It may not be used, modified, reproduced or relied upon by third parties, except as agreed by AECOM or as required by law. AECOM accepts no responsibility, and disclaims any liability, whatsoever, for any part, that less or relies on this drawing without AECOM's express written consent. All measurements must be obtained from the stated dimensions.