

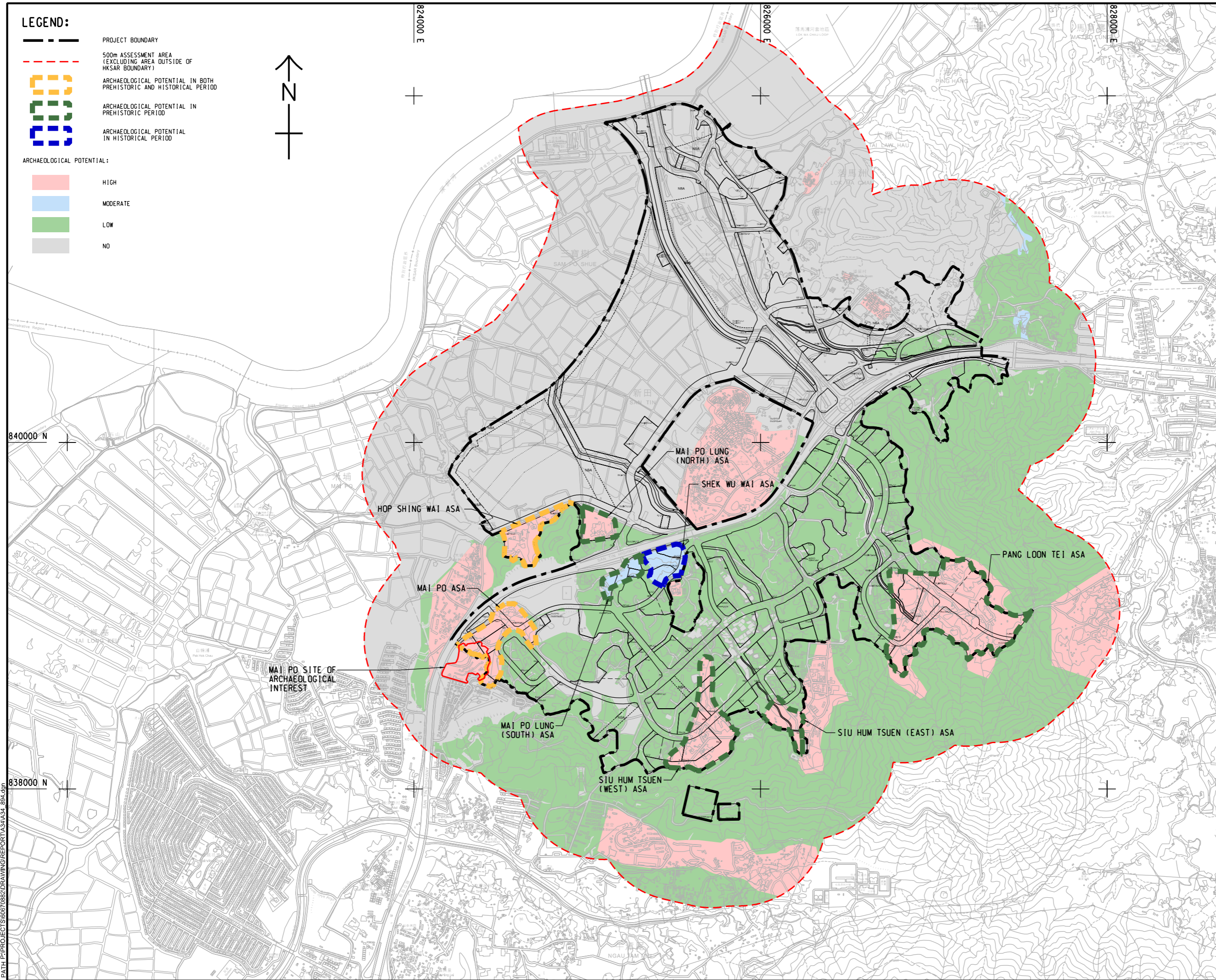
ISO A1 594mm x 841mm
Approved:
Checked:
Designer:
Project Management Initials:

LEGEND:

- PROJECT BOUNDARY
- 500m ASSESSMENT AREA (EXCLUDING AREA OUTSIDE OF HKSAR BOUNDARY)
- ARCHAEOLOGICAL POTENTIAL IN BOTH PREHISTORIC AND HISTORICAL PERIOD
- ARCHAEOLOGICAL POTENTIAL IN PREHISTORIC PERIOD
- ARCHAEOLOGICAL POTENTIAL IN HISTORICAL PERIOD

ARCHAEOLOGICAL POTENTIAL:

- HIGH
- MODERATE
- LOW
- NO



AECOM

PROJECT
項目
FIRST PHASE DEVELOPMENT OF THE NEW TERRITORIES NORTH – SAN TIN / LOK MA CHAU DEVELOPMENT NODE – INVESTIGATION

CLIENT
業主
土木工務發展署
Civil Engineering and Development Department
規劃署
Planning Department

CONSULTANT
顧問公司
AECOM Asia Company Ltd.
www.aecom.com

SUB-CONSULTANTS
分判工程師/顧問公司

ISSUE/REVISION
修訂

IR	DATE	DESCRIPTION	CHK.

STATUS
階段

SCALE
比例
A3 1 : 20000

DIMENSION UNIT
尺寸單位
METRES

KEY PLAN
索引圖

PROJECT NO.
項目編號
60670882

AGREEMENT NO.
協議編號
CE 20/2021

SHEET TITLE
圖紙名稱
ARCHAEOLOGICALLY SENSITIVE AREAS IN RELATIONS TO THE REVISED RODP

SHEET NUMBER
圖紙編號
60670882/A34/FIGURE 12.64

Plot File by: vicky.xia1
PATH: P:\PROJECTS\60670882\DRAWING\REPORT\A34\A34_894.dwg

This drawing has been prepared for the use of AECOM's client. It may not be used, modified, reproduced or relied upon by third parties, except as agreed by AECOM or as required by law. AECOM accepts no responsibility, and denies any liability, whatsoever, to any party that uses or relies on this drawing without AECOM's express written consent. Do not scale this document. All measurements must be obtained from the stated dimensions.