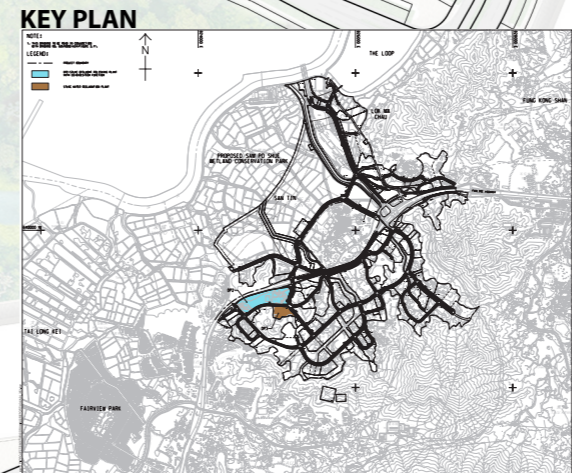
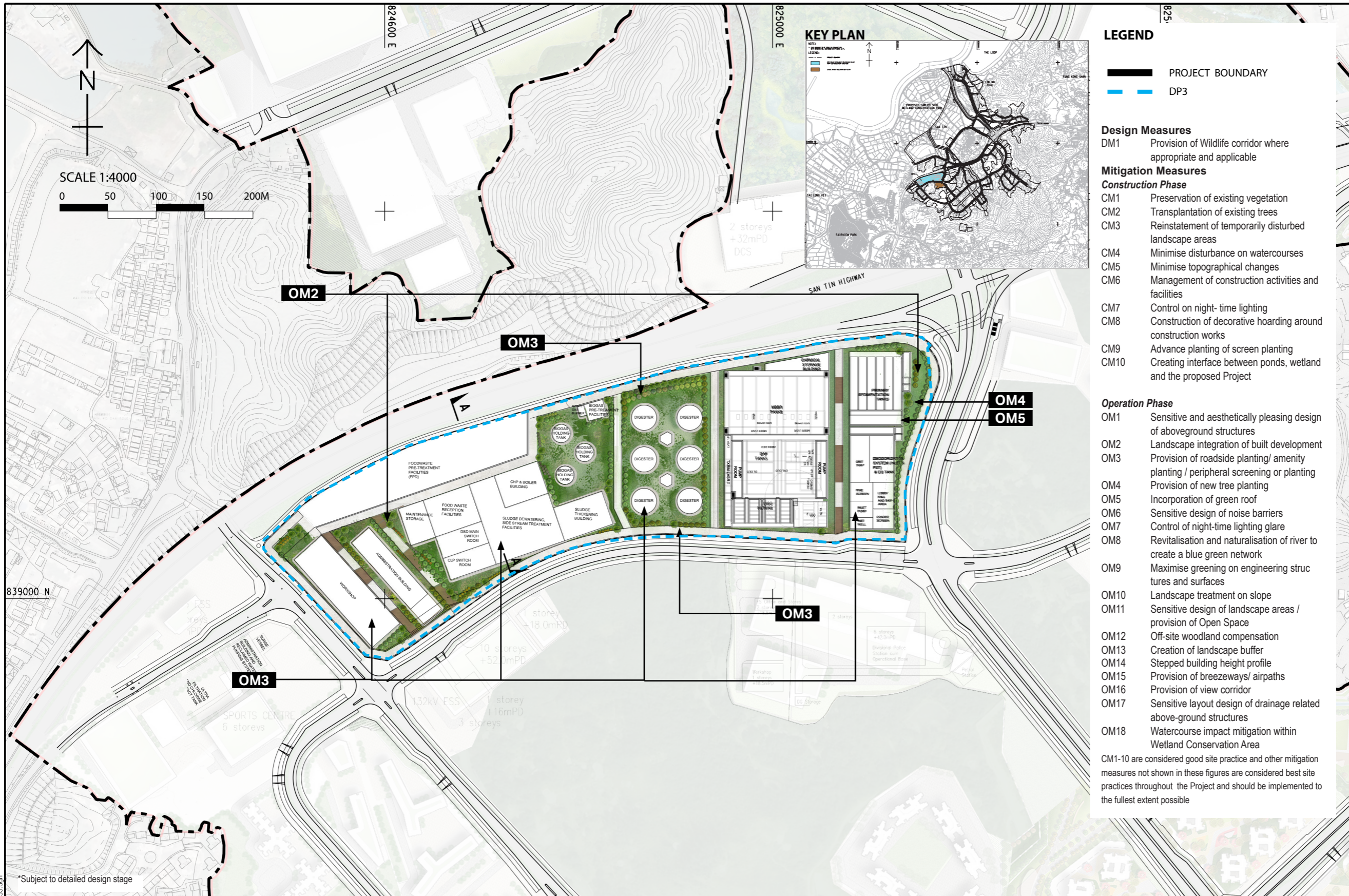


ISO A1 594mm x 841mm
 Approved:
 Checked:
 Designer:
 Project Management Initials:
 2023/01/14
 PATH PROJECTS/60670882/DRAWING/REPORT/A34/A34_353.dwg



- LEGEND**
- PROJECT BOUNDARY
 - DP3

- Design Measures**
- DM1 Provision of Wildlife corridor where appropriate and applicable
- Mitigation Measures**
- Construction Phase**
- CM1 Preservation of existing vegetation
 - CM2 Transplantation of existing trees
 - CM3 Reinstatement of temporarily disturbed landscape areas
 - CM4 Minimise disturbance on watercourses
 - CM5 Minimise topographical changes
 - CM6 Management of construction activities and facilities
 - CM7 Control on night-time lighting
 - CM8 Construction of decorative hoarding around construction works
 - CM9 Advance planting of screen planting
 - CM10 Creating interface between ponds, wetland and the proposed Project
- Operation Phase**
- OM1 Sensitive and aesthetically pleasing design of aboveground structures
 - OM2 Landscape integration of built development
 - OM3 Provision of roadside planting/ amenity planting / peripheral screening or planting
 - OM4 Provision of new tree planting
 - OM5 Incorporation of green roof
 - OM6 Sensitive design of noise barriers
 - OM7 Control of night-time lighting glare
 - OM8 Revitalisation and naturalisation of river to create a blue green network
 - OM9 Maximise greening on engineering structures and surfaces
 - OM10 Landscape treatment on slope
 - OM11 Sensitive design of landscape areas / provision of Open Space
 - OM12 Off-site woodland compensation
 - OM13 Creation of landscape buffer
 - OM14 Stepped building height profile
 - OM15 Provision of breezeways/ airpaths
 - OM16 Provision of view corridor
 - OM17 Sensitive layout design of drainage related above-ground structures
 - OM18 Watercourse impact mitigation within Wetland Conservation Area
- CM1-10 are considered good site practice and other mitigation measures not shown in these figures are considered best site practices throughout the Project and should be implemented to the fullest extent possible

AECOM

PROJECT
 FIRST PHASE DEVELOPMENT OF THE NEW TERRITORIES NORTH – SAN TIN / LOK MA CHAU DEVELOPMENT NODE – INVESTIGATION

CLIENT
 土木工程拓展署
 Civil Engineering and Development Department
 規劃署
 Planning Department

CONSULTANT
 AECOM Asia Company Ltd.
 www.aecom.com

SUB-CONSULTANTS

ISSUE/REVISION

NO.	DATE	DESCRIPTION	CHK.

STATUS

NO.	DATE	DESCRIPTION	CHK.

SCALE **DIMENSION UNIT**

A3:1:4000	METRES
-----------	--------

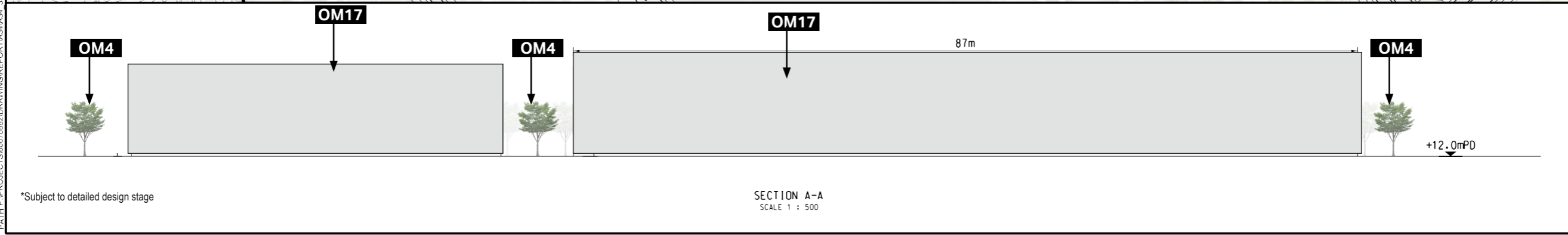
KEY PLAN

PROJECT NO. **AGREEMENT NO.**

60670882	CE 20/2021
----------	------------

SHEET TITLE
 Mitigation Measures for DP 2- New effluent polishing plant with co-digestion function (EPP)

SHEET NUMBER
 60670882/A34/ Figure 14.17.19



SECTION A-A
 SCALE 1 : 500

This drawing has been prepared for the use of AECOM's client. It may not be used, modified, reproduced or relied upon by third parties, except as agreed by AECOM or as required by law. AECOM accepts no responsibility, and disclaims any liability whatsoever, for any party that uses or relies on this drawing without AECOM's express written consent. All measurements must be obtained from the stated dimensions.