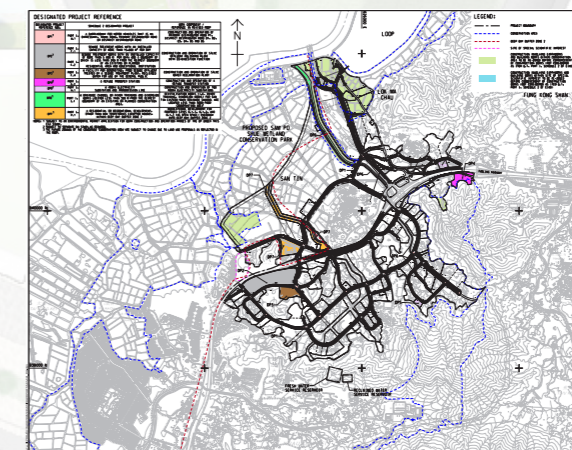
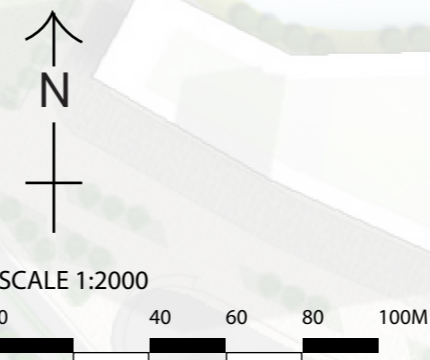
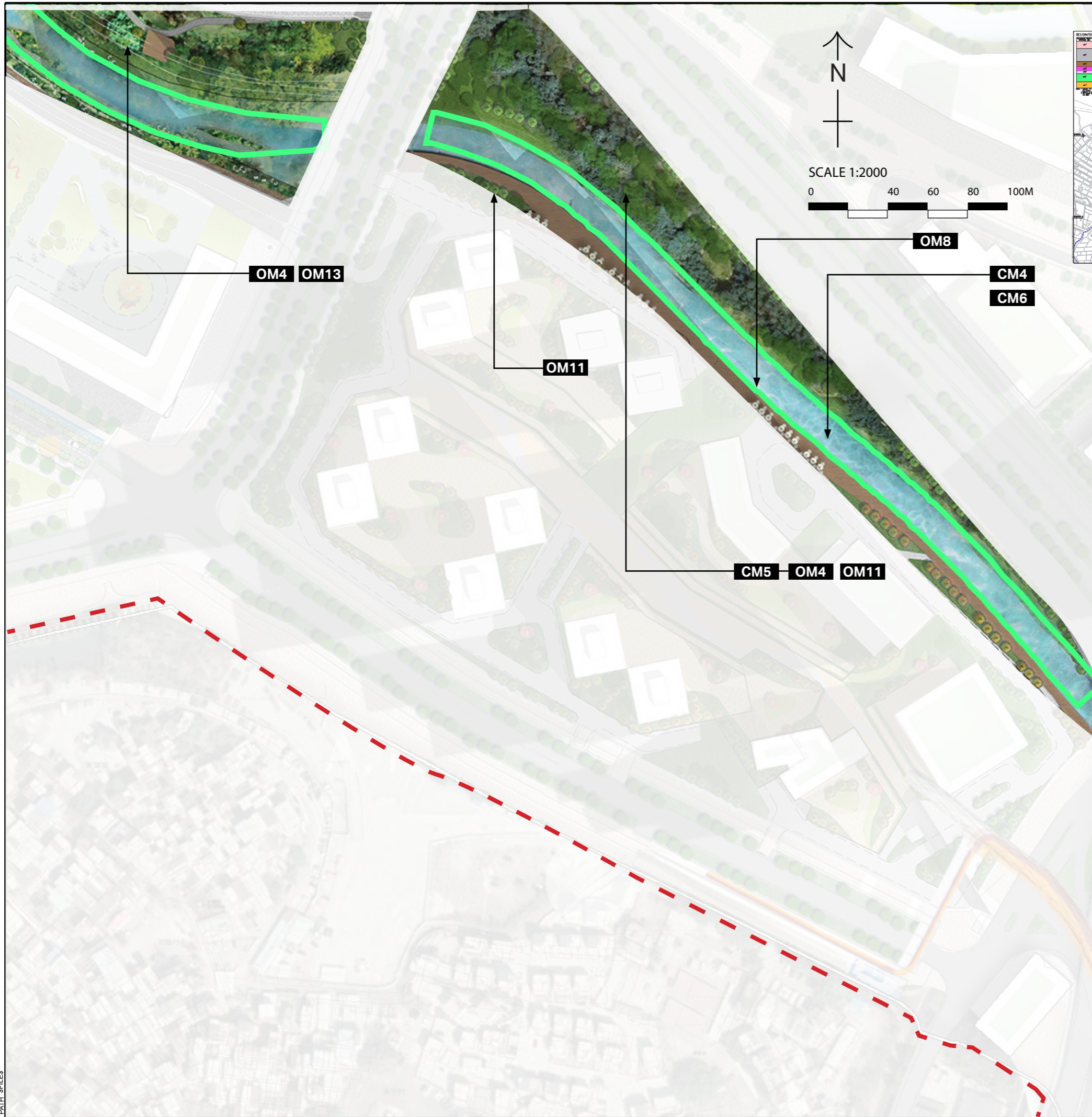


ISO A3 297mm x 420mm  
 Approved:  
 Checked:  
 Designer:  
 Project Management Initials:  
 \$USERS \$DATES  
 PATH \$FILES



- LEGEND**
- Project boundary
  - DP1
  - DP2
  - DP3
  - DP4\*
  - DP5\*
  - DP6
  - DP7
- \* EP to be applied under separate EIA

**Design Measures**  
 DM1 Provision of Wildlife corridor where appropriate and applicable

**Mitigation Measures**  
**Construction Phase**  
 CM1 Preservation of existing vegetation  
 CM2 Transplantation of existing trees  
 CM3 Reinstatement of temporarily disturbed landscape areas  
 CM4 Minimise disturbance on watercourses  
 CM5 Minimise topographical changes  
 CM6 Management of construction activities and facilities  
 CM7 Control on night- time lighting  
 CM8 Construction of decorative hoarding around construction works  
 CM9 Advance planting of screen planting  
 CM10 Creating interface between ponds, wetland and the proposed Project

**Operation Phase**  
 OM1 Sensitive and aesthetically pleasing design of aboveground structures  
 OM2 Landscape integration of built development  
 OM3 Provision of roadside planting/ amenity planting / peripheral screening or planting  
 OM4 Provision of new tree planting  
 OM5 Incorporation of green roof  
 OM6 Sensitive design of noise barriers  
 OM7 Control of night-time lighting glare  
 OM8 Revitalisation and naturalisation of river to create a blue green network  
 OM9 Maximise greening on engineering structures and surfaces  
 OM10 Landscape treatment on slope  
 OM11 Sensitive design of landscape areas / provision of Open Space  
 OM12 Off-site woodland compensation  
 OM13 Creation of landscape buffer  
 OM14 Stepped building height profile  
 OM15 Provision of breezeways/ airpaths  
 OM16 Provision of view corridor  
 OM17 Sensitive layout design of drainage related above-ground structures  
 OM18 Watercourse impact mitigation within Wetland Conservation Area

CM1-10 are considered good site practice and other mitigation measures not shown in these figures are considered best site practices throughout the Project and should be implemented to the fullest extent possible

**ISSUE/REVISION**  
 修訂

I/R	DATE	DESCRIPTION	CHK.
修訂	日期	內容/描述	核核

**STATUS**  
 階段

**SCALE**  
 比例  
 A3 1:2000

**DIMENSION UNIT**  
 尺寸單位  
 METRES

**DATE**  
 日期  
 NOV 2022

**KEY PLAN**  
 索引圖

**PROJECT NO.**  
 項目編號  
 60670882

**AGREEMENT NO.**  
 協議編號  
 CE 20/2021

**SHEET TITLE**  
 圖紙名稱  
 Mitigation Measures for DP 6

**SHEET NUMBER**  
 圖紙編號  
 60670882/A34/ Figure 14.17.24

This drawing has been prepared for the use of AECOM's client. It may not be used, modified, reproduced or relied upon by third parties, except as agreed by AECOM or as required by law. AECOM accepts no responsibility, and denies any liability whatsoever, to any party that uses or relies on this drawing without AECOM's express written consent. All measurements must be obtained from the stated dimensions.