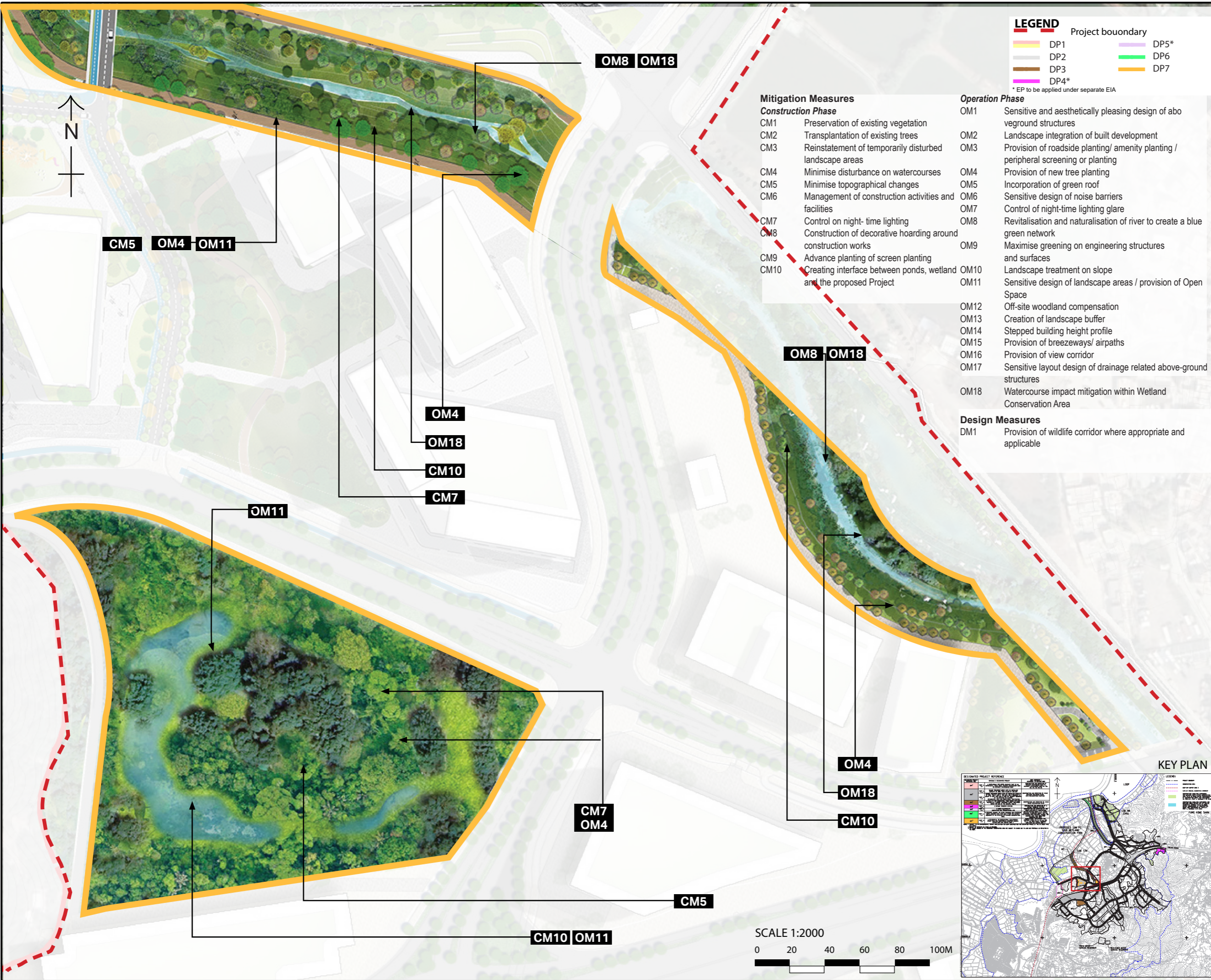


ISO A3 297mm x 420mm
Approved:
Checked:
Designer:
Project Management Initials:
Plot File by: \$USERS \$DATES
PATH \$FILES



LEGEND

	Project boundary		DP5*
	DP1		DP6
	DP2		DP7
	DP3		
	DP4*		

* EP to be applied under separate EIA

Mitigation Measures

Construction Phase

- CM1 Preservation of existing vegetation
- CM2 Transplantation of existing trees
- CM3 Reinstatement of temporarily disturbed landscape areas
- CM4 Minimise disturbance on watercourses
- CM5 Minimise topographical changes
- CM6 Management of construction activities and facilities
- CM7 Control on night-time lighting
- CM8 Construction of decorative hoarding around construction works
- CM9 Advance planting of screen planting
- CM10 Creating interface between ponds, wetland and the proposed Project

Operation Phase

- OM1 Sensitive and aesthetically pleasing design of above-ground structures
- OM2 Landscape integration of built development
- OM3 Provision of roadside planting/ amenity planting / peripheral screening or planting
- OM4 Provision of new tree planting
- OM5 Incorporation of green roof
- OM6 Sensitive design of noise barriers
- OM7 Control of night-time lighting glare
- OM8 Revitalisation and naturalisation of river to create a blue green network
- OM9 Maximise greening on engineering structures and surfaces
- OM10 Landscape treatment on slope
- OM11 Sensitive design of landscape areas / provision of Open Space
- OM12 Off-site woodland compensation
- OM13 Creation of landscape buffer
- OM14 Stepped building height profile
- OM15 Provision of breezeways/ airpaths
- OM16 Provision of view corridor
- OM17 Sensitive layout design of drainage related above-ground structures
- OM18 Watercourse impact mitigation within Wetland Conservation Area

Design Measures

- DM1 Provision of wildlife corridor where appropriate and applicable



PROJECT
項目
FIRST PHASE DEVELOPMENT OF THE NEW TERRITORIES NORTH – SAN TIN / LOK MA CHAU DEVELOPMENT NODE – INVESTIGATION

CLIENT
業主
 土木工程拓展署
Civil Engineering and Development Department
 規劃署
Planning Department

CONSULTANT
顧問公司
AECOM Asia Company Ltd.
www.aecom.com

SUB-CONSULTANTS
分判工程師/顧問公司

ISSUE/REVISION
修訂

I/R	DATE	DESCRIPTION	CHK.

STATUS
階段

SCALE
比例
A3 1:2000

DIMENSION UNIT
尺寸單位
METRES

DATE
日期
NOV 2022

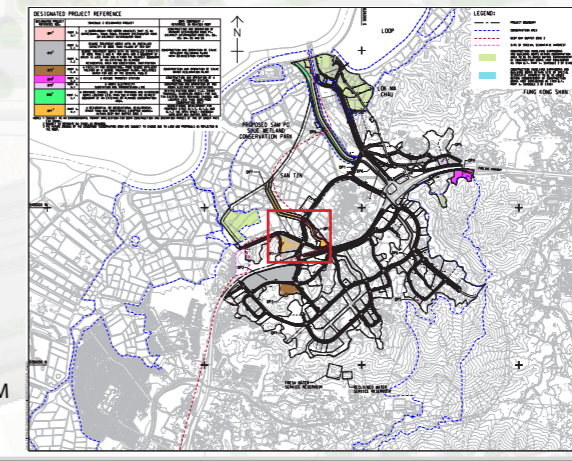
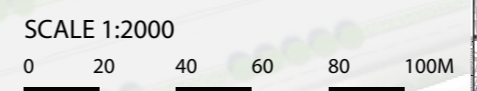
KEY PLAN
索引圖

PROJECT NO.
項目編號
60670882

AGREEMENT NO.
協議編號
CE 20/2021

SHEET TITLE
圖紙名稱
Mitigation Measures for DP 6,7

SHEET NUMBER
圖紙編號
60670882/A34/ Figure 14.17.27



This drawing has been prepared for the use of AECOM's client. It may not be used, modified, reproduced or relied upon by third parties, except as agreed by AECOM or as required by law. AECOM accepts no responsibility, and denies any liability whatsoever, to any party that uses or relies on this drawing without AECOM's express written consent. Do not scale this document. All measurements must be obtained from the stated dimensions.