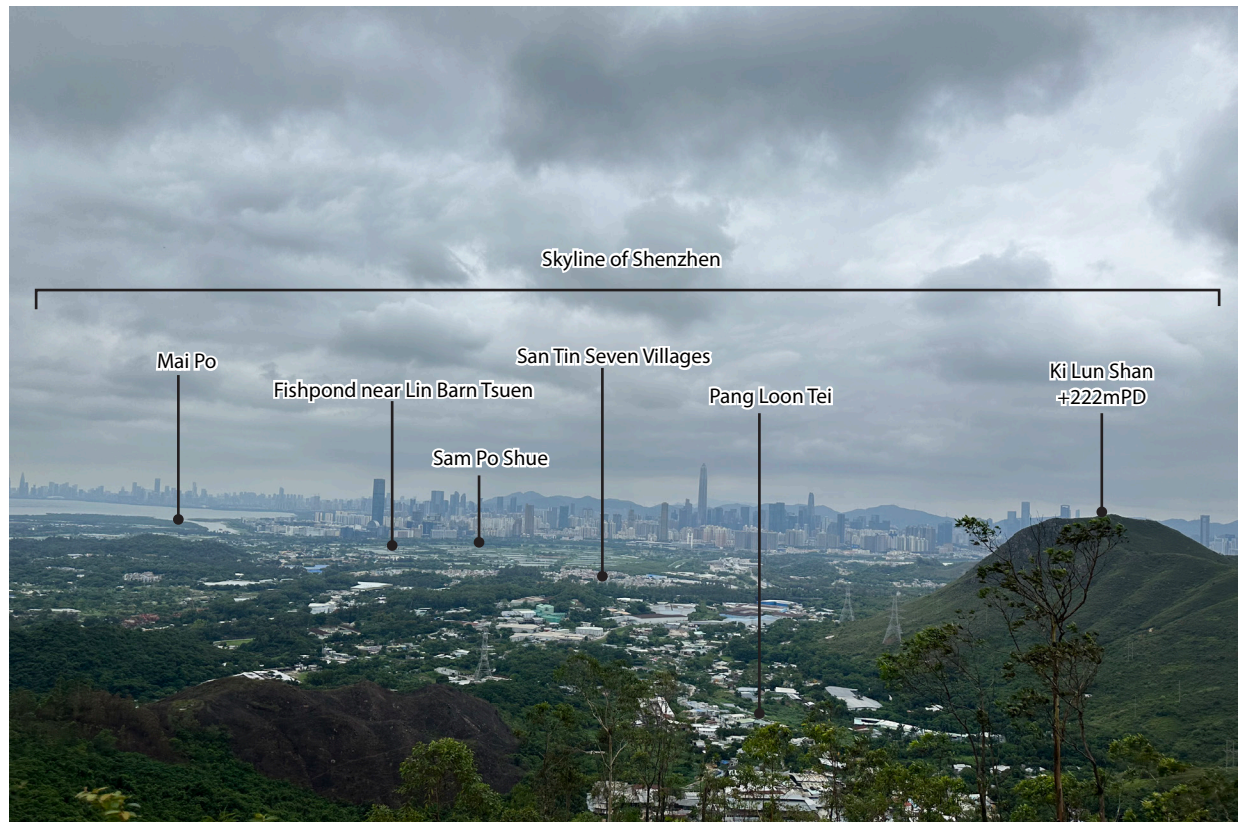
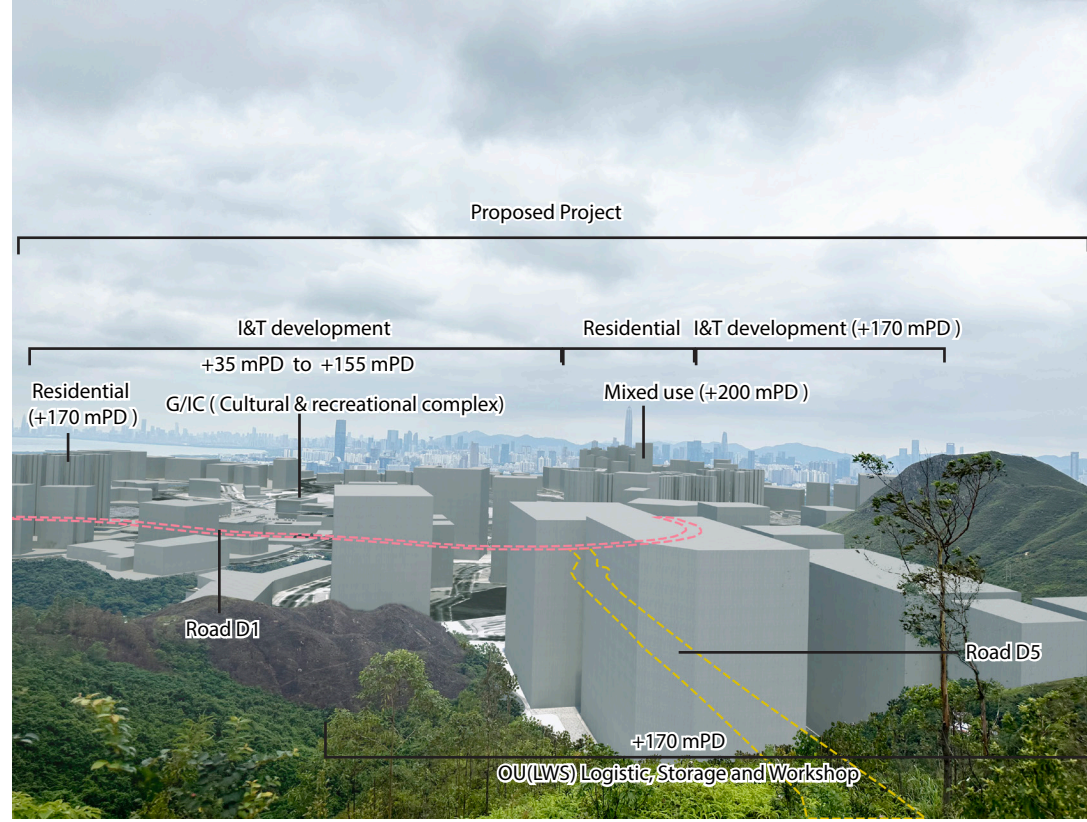


ISO A3 297mm x 420mm
Approved:
Checked:
Designer:
Project Management Initials:
DATE
\$USERS
PATH \$FILES

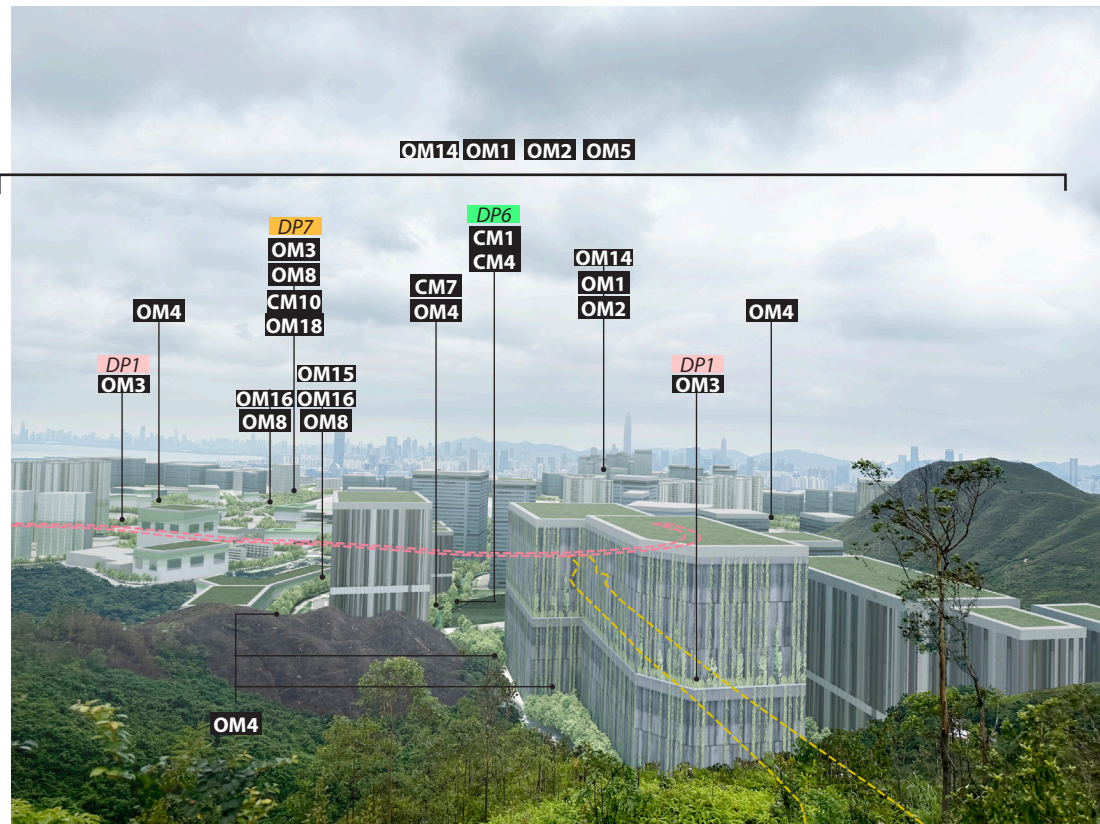
Existing Baseline Condition



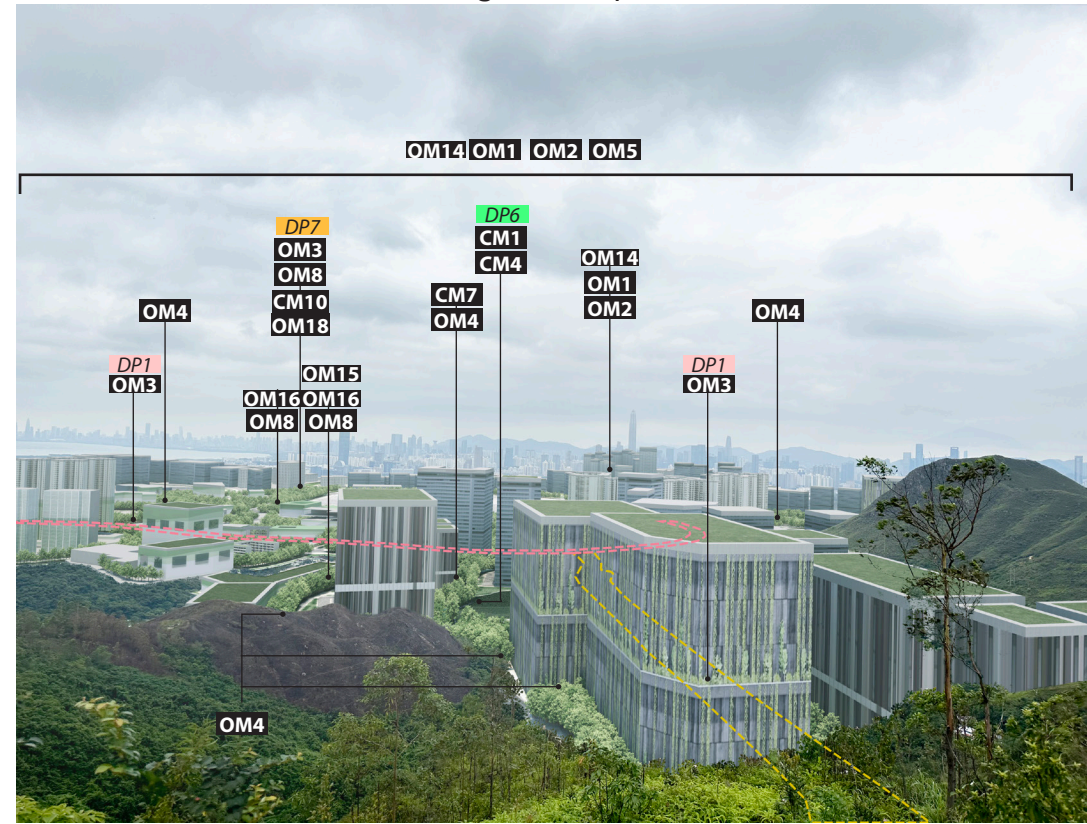
Day 1 without mitigation (Operation Phase)



Day 1 with mitigation (Operation Phase)



Year 10 with mitigation (Operation Phase)



DP6 – Revitalisation works for San Tin Eastern Main Drainage Channel and San Tin Western Main Drainage Channel are located less than 300m from Conservation Area

DP7–Recreational development for proposed Sites O.1.1, O.1.2, and O.1.3 (as open space) encroach into Deep Bay Buffer Zone 2

Mitigation Measures

- CM1- Preservation of existing vegetation
- CM2- Transplantation of existing trees
- CM3- Reinstatement of temporarily disturbed landscape areas
- CM4- Minimise disturbance on watercourses
- CM5- Minimise topographical changes
- CM6- Management of construction activities and facilities
- CM7- Control on night- time lighting
- CM8- Construction of decorative hoarding around construction works
- CM9- Advance planting of screen planting
- CM10- Creating interface between ponds, wetland and the proposed Project

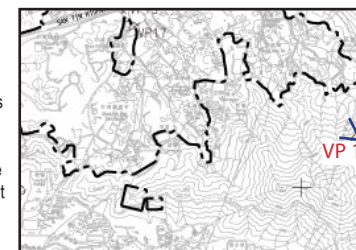
- OM1- Sensitive and aesthetically pleasing design of aboveground structures
- OM2- Landscape integration of built development
- OM3- Provision of roadside planting/ amenity planting / peripheral screening or planting
- OM4- Provision of new tree planting
- OM5- Incorporation of green roof
- OM6- Sensitive design of noise barriers
- OM7- Control of night-time lighting glare
- OM8- Revitalisation and naturalisation of river to create a blue green network

- OM9-Maximise greening on engineering structures and surfaces
- OM10-Landscape treatment on slope
- OM11-Sensitive design of landscape areas / provision of Open Space
- OM12- Off-site woodland compensation
- OM13- Creation of landscape buffer
- OM14- Stepped building height profile
- OM15- Provision of breezeway/ airpaths
- OM16- Provision of view corridor

- OM17- Sensitive layout design of drainage related above-ground structures
- OM18- Watercourse impact mitigation within Wetland Conservation Area

Design Measures
DM1-Provision of wildlife corridor where appropriate and applicable

CM1-10 are considered good site practice and other mitigation measures not shown in these figures are considered best site practices throughout the Project and should be implemented to the fullest extent possible.



PROJECT
項目
FIRST PHASE DEVELOPMENT OF THE NEW TERRITORIES NORTH – SAN TIN / LOK MA CHAU DEVELOPMENT NODE – INVESTIGATION

CLIENT
業主
CEDD 土木工程拓展署
Civil Engineering and Development Department
規劃署
Planning Department

CONSULTANT
顧問公司
AECOM Asia Company Ltd.
www.aecom.com

SUB-CONSULTANTS
分判工程師/顧問公司

ISSUE/REVISION

NO.	DATE	DESCRIPTION	CHK.

I/R	DATE	DESCRIPTION	CHK.

STATUS
狀態

SCALE 比例: A3 1:20,000
DIMENSION UNIT 尺寸單位: METRES

DATE 日期: NOV 2022

KEY PLAN 索引圖

PROJECT NO. 項目編號: 60670882
AGREEMENT NO. 協議編號: CE 20/2021

SHEET TITLE 圖紙名稱: PHOTOMONTAGE VIEWPOINT 12- VIEW FROM HIKING TRAIL OF NGAU TAM SHAN

SHEET NUMBER 圖紙編號: 60670882/A34/FIGURE 14.33

This drawing has been prepared for the use of AECOM's client. It may not be used, modified, reproduced or re-used, in whole or in part, without the express written consent of AECOM. All measurements must be obtained from the source dimensions.