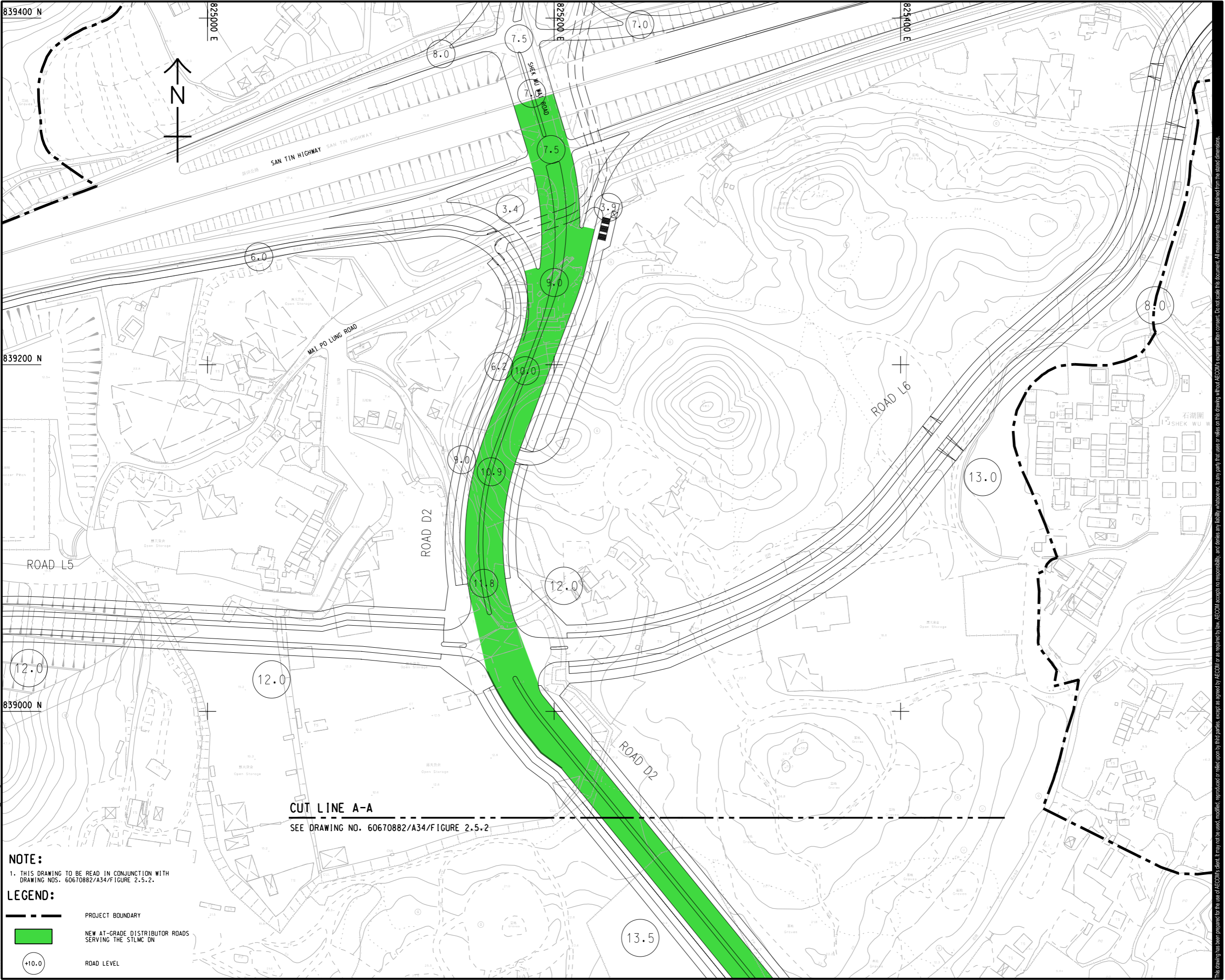


ISO A1 594mm x 841mm  
 Approved:  
 Checked:  
 Designer:  
 Project Management Initials:  
 Plot File by: Yifeng.CI 11/14/2023  
 PATH P:\PROJECTS\60670882\DRAWING\REPORT\A34\A34\_372.dgn



**CUT LINE A-A**  
 SEE DRAWING NO. 60670882/A34/FIGURE 2.5.2

**NOTE:**  
 1. THIS DRAWING TO BE READ IN CONJUNCTION WITH DRAWING NOS. 60670882/A34/FIGURE 2.5.2.

**LEGEND:**

- PROJECT BOUNDARY
- NEW AT-GRADE DISTRIBUTOR ROADS SERVING THE STLDC DN
- ROAD LEVEL



**PROJECT**  
 項目  
 FIRST PHASE DEVELOPMENT OF THE NEW TERRITORIES NORTH – SAN TIN / LOK MA CHAU DEVELOPMENT NODE – INVESTIGATION

**CLIENT**  
 業主  
 土木工程拓展署  
 Civil Engineering and Development Department  
 規劃署  
 Planning Department

**CONSULTANT**  
 工程顧問公司  
 AECOM Asia Company Ltd.  
 www.aecom.com

**SUB-CONSULTANTS**  
 分判工程顧問公司

**ISSUE/REVISION**  
 修訂

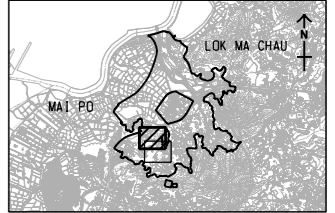
IR	DATE	DESCRIPTION	CHK.
修訂	日期	內容摘要	核對

**STATUS**  
 階段

**SCALE**  
 比例  
 A3 1 : 2000

**DIMENSION UNIT**  
 尺寸單位  
 METRES

**KEY PLAN** A3 1 : 200000  
 索引圖



**PROJECT NO.**  
 項目編號  
 60670882

**AGREEMENT NO.**  
 協議編號  
 CE 20/2021

**SHEET TITLE**  
 圖紙名稱  
 GENERAL LAYOUT OF NEW DISTRICT DISTRIBUTOR ROAD (ROAD D2)

**SHEET NUMBER**  
 圖紙編號  
 60670882/A34/FIGURE 2.5.1

This drawing has been prepared for the use of AECOM's client. It may not be used, modified, reproduced or relied upon by third parties, except as agreed by AECOM or as required by law. AECOM accepts no responsibility, and disclaims any liability whatsoever, for any gain, loss or damage on this drawing without AECOM's express written consent. Do not scale this document. All measurements must be obtained from the stated dimensions.