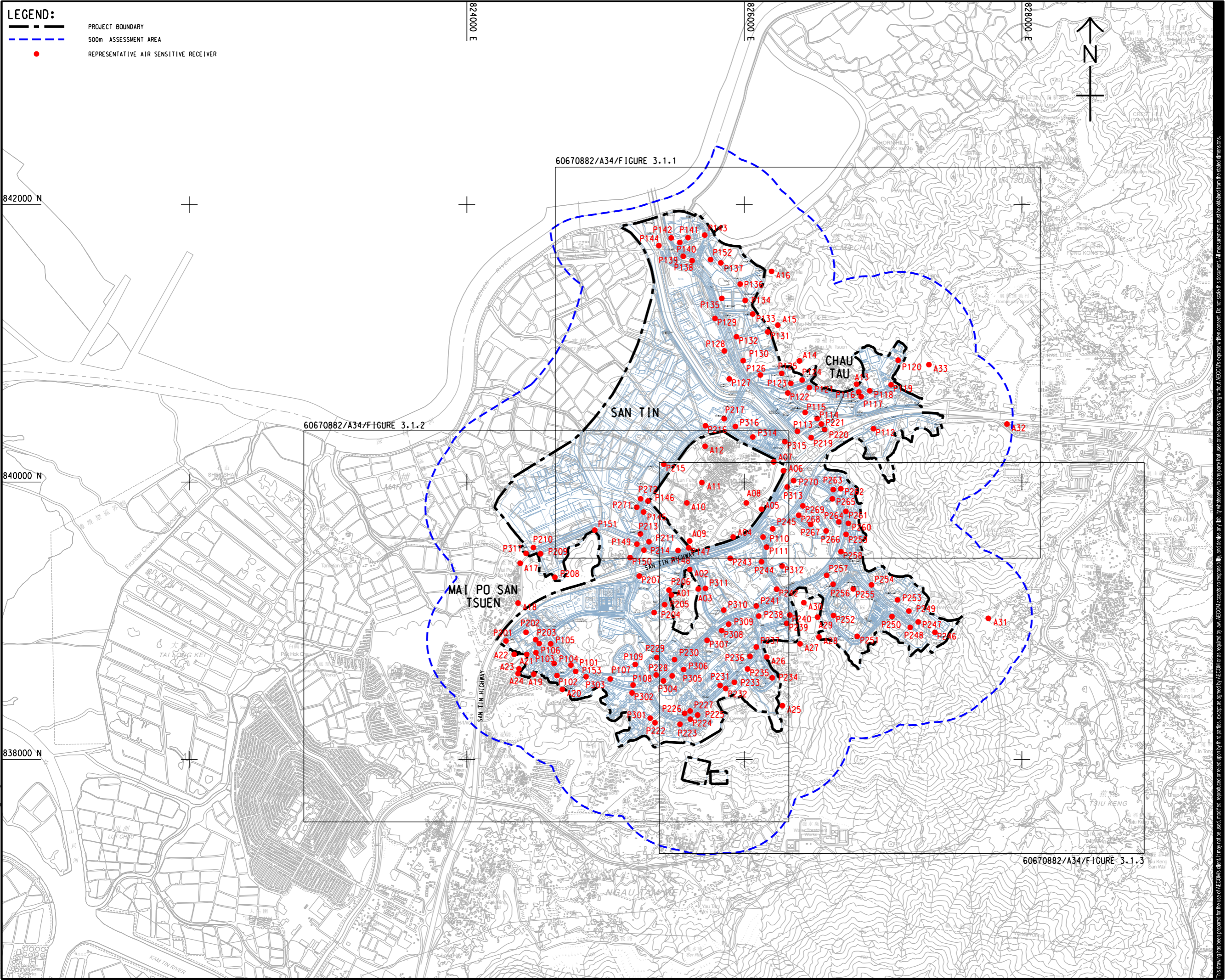


ISO A1 594mm x 841mm
 Approved:
 Checked:
 Designer:
 Project Management Initials:
 Plot File by: Yuxuan, the 11/30/2023
 PATH P:\PROJECTS\60670882\DRAWING\REPORT\A34\A34_401.dgn
 This drawing has been prepared for the use of AECOM's client. It may not be used, modified, reproduced or relied upon by third parties, except as agreed by AECOM or as required by law. AECOM accepts no responsibility, and denies any liability whatsoever, to any party that assesses or relies on this drawing without AECOM's express written consent. Do not scale this document. All measurements must be obtained from the stated dimensions.



LEGEND:

- PROJECT BOUNDARY
- 500m ASSESSMENT AREA
- REPRESENTATIVE AIR SENSITIVE RECEIVER



PROJECT
 項目
 FIRST PHASE DEVELOPMENT OF THE NEW TERRITORIES NORTH – SAN TIN / LOK MA CHAU DEVELOPMENT NODE – INVESTIGATION

CLIENT
 業主
土木工程拓展署
 Civil Engineering and Development Department
規劃署
 Planning Department

CONSULTANT
 顧問公司
 AECOM Asta Company Ltd.
 www.aecom.com

SUB-CONSULTANTS
 分包工程師/公司

ISSUE/REVISION
 修訂

I/R	DATE	DESCRIPTION	CHK.
修訂	日期	內容摘要	核核

STATUS
 階段

SCALE
 比例
 A3 1 : 25000

DIMENSION UNIT
 尺寸單位
 METRES

KEY PLAN
 索引圖

PROJECT NO.
 項目編號
 60670882

AGREEMENT NO.
 協議編號
 CE 20/2021

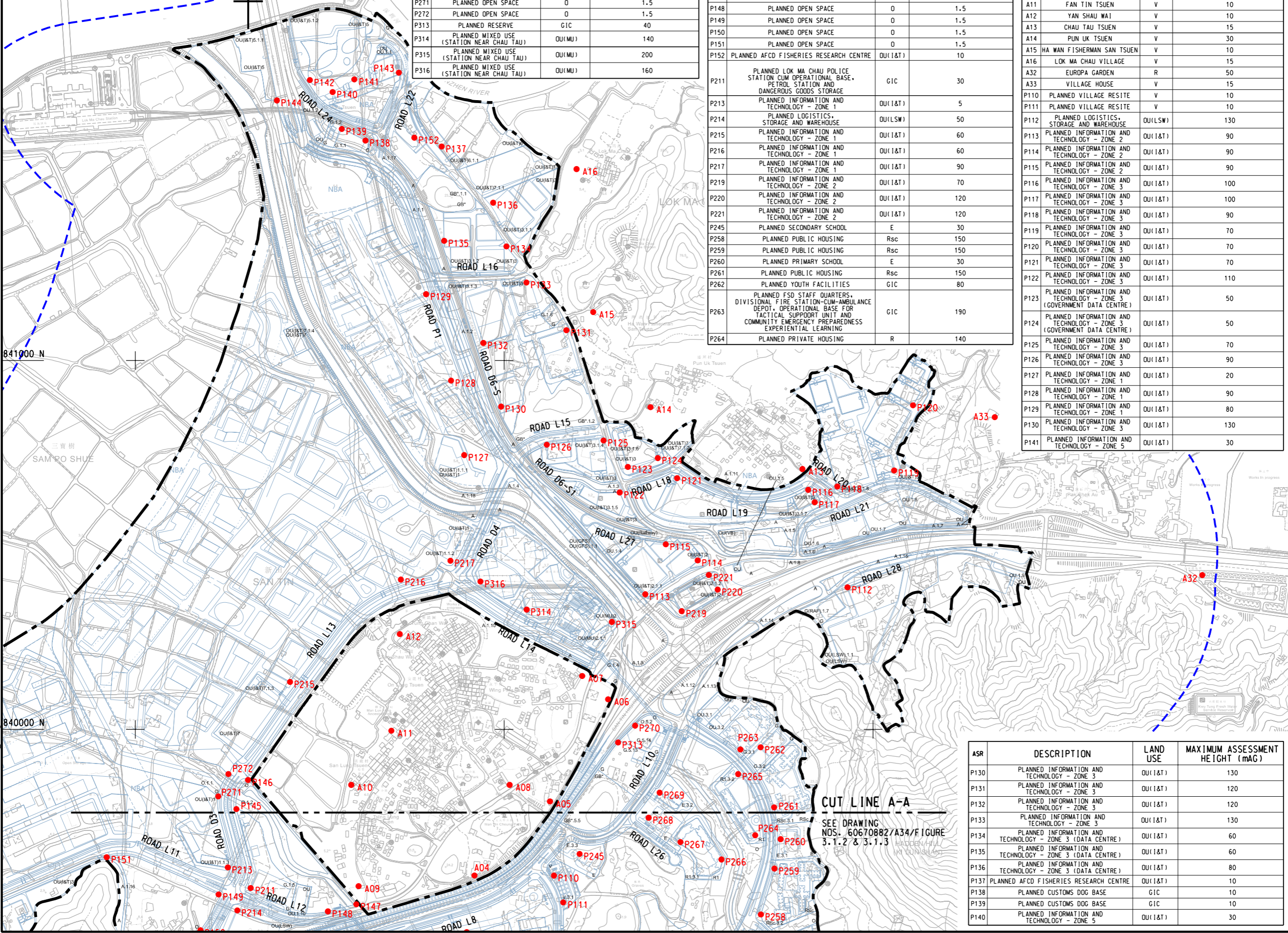
SHEET TITLE
 圖紙名稱
 LOCATIONS OF REPRESENTATIVE SENSITIVE RECEIVERS (KEY PLAN)

SHEET NUMBER
 圖紙編號
 60670882/A34/FIGURE 3.1

ISO A1 594mm x 841mm
 Approved:
 Checked:
 Designer:
 Project Management Initials:
 Photo File by: YueFB
 PATH PROJECTS\60670882\DRAWING\REPORT\A34\A34_402.dwg
 27/12/2023

NOTE:
 1. THIS DRAWING TO BE READ IN CONJUNCTION WITH DRAWING NOS. 60670882/A34/Figure 3.1-1 TO 3.1-3.

LEGEND:
 - - - - - PROJECT BOUNDARY
 - - - - - 500m ASSESSMENT AREA
 ● REPRESENTATIVE AIR SENSITIVE RECEIVER



ASR	DESCRIPTION	LAND USE	MAXIMUM ASSESSMENT HEIGHT (mAG)
P265	PLANNED PRIVATE HOUSING	R	140
P266	PLANNED PRIVATE HOUSING	R	140
P267	PLANNED PRIVATE HOUSING	R	140
P268	PLANNED 1 PRIMARY SCHOOL + 1 SECONDARY SCHOOL	E	30
P269	PLANNED 1 PRIMARY SCHOOL + 1 SECONDARY SCHOOL	E	30
P270	PLANNED SPORT CENTRE	GIC	30
P271	PLANNED OPEN SPACE	O	1.5
P272	PLANNED OPEN SPACE	O	1.5
P313	PLANNED RESERVE	GIC	40
P314	PLANNED MIXED USE (STATION NEAR CHAU TAU)	OUI(MU)	140
P315	PLANNED MIXED USE (STATION NEAR CHAU TAU)	OUI(MU)	200
P316	PLANNED MIXED USE (STATION NEAR CHAU TAU)	OUI(MU)	160

ASR	DESCRIPTION	LAND USE	MAXIMUM ASSESSMENT HEIGHT (mAG)
P142	PLANNED INFORMATION AND TECHNOLOGY - ZONE 5	OUI(I&T)	30
P143	PLANNED INFORMATION AND TECHNOLOGY - ZONE 5	OUI(I&T)	30
P144	PLANNED INFORMATION AND TECHNOLOGY - ZONE 5	OUI(I&T)	30
P145	PLANNED OPEN SPACE	O	1.5
P146	PLANNED OPEN SPACE	O	1.5
P147	PLANNED OPEN SPACE	O	1.5
P148	PLANNED OPEN SPACE	O	1.5
P149	PLANNED OPEN SPACE	O	1.5
P150	PLANNED OPEN SPACE	O	1.5
P151	PLANNED OPEN SPACE	O	1.5
P152	PLANNED AFCD FISHERIES RESEARCH CENTRE	OUI(I&T)	10
P211	PLANNED LOK MA CHAU POLICE STATION CUM OPERATIONAL BASE, PETROL STATION AND DANGEROUS GOODS STORAGE	GIC	30
P213	PLANNED INFORMATION AND TECHNOLOGY - ZONE 1	OUI(I&T)	5
P214	PLANNED LOGISTICS, STORAGE AND WAREHOUSE	OUI(LSW)	50
P215	PLANNED INFORMATION AND TECHNOLOGY - ZONE 1	OUI(I&T)	60
P216	PLANNED INFORMATION AND TECHNOLOGY - ZONE 1	OUI(I&T)	60
P217	PLANNED INFORMATION AND TECHNOLOGY - ZONE 1	OUI(I&T)	90
P219	PLANNED INFORMATION AND TECHNOLOGY - ZONE 2	OUI(I&T)	70
P220	PLANNED INFORMATION AND TECHNOLOGY - ZONE 2	OUI(I&T)	120
P221	PLANNED INFORMATION AND TECHNOLOGY - ZONE 2	OUI(I&T)	120
P245	PLANNED SECONDARY SCHOOL	E	30
P258	PLANNED PUBLIC HOUSING	Rsc	150
P259	PLANNED PUBLIC HOUSING	Rsc	150
P260	PLANNED PRIMARY SCHOOL	E	30
P261	PLANNED PUBLIC HOUSING	Rsc	150
P262	PLANNED YOUTH FACILITIES	GIC	80
P263	PLANNED FSD STAFF QUARTERS, DIVISIONAL FIRE STATION-CUM-AMBULANCE DEPOT, OPERATIONAL BASE FOR TACTICAL SUPPORT UNIT AND COMMUNITY EMERGENCY PREPAREDNESS EXPERIENTIAL LEARNING	GIC	190
P264	PLANNED PRIVATE HOUSING	R	140

ASR	DESCRIPTION	LAND USE	MAXIMUM ASSESSMENT HEIGHT (mAG)
A04	VILLAGE HOUSE	V	10
A05	SAN TIN VILLAGE	V	10
A06	SITE OFFICE	V	10
A07	WING PING TSUEN	V	10
A08	TUN YU SCHOOL	E	10
A09	TSING LUNG TSUEN	V	10
A10	SAN LUNG TSUEN	V	10
A11	FAN TIN TSUEN	V	10
A12	YAN SHAU WAI	V	10
A13	CHAU TAU TSUEN	V	15
A14	PUN UK TSUEN	V	30
A15	HA WAN FISHERMAN SAN TSUEN	V	10
A16	LOK MA CHAU VILLAGE	V	15
A32	EUROPA GARDEN	R	50
A33	VILLAGE HOUSE	V	15
P111	PLANNED VILLAGE RESITE	V	10
P112	PLANNED LOGISTICS, STORAGE AND WAREHOUSE	OUI(LSW)	130
P113	PLANNED INFORMATION AND TECHNOLOGY - ZONE 2	OUI(I&T)	90
P114	PLANNED INFORMATION AND TECHNOLOGY - ZONE 2	OUI(I&T)	90
P115	PLANNED INFORMATION AND TECHNOLOGY - ZONE 2	OUI(I&T)	90
P116	PLANNED INFORMATION AND TECHNOLOGY - ZONE 3	OUI(I&T)	100
P117	PLANNED INFORMATION AND TECHNOLOGY - ZONE 3	OUI(I&T)	100
P118	PLANNED INFORMATION AND TECHNOLOGY - ZONE 3	OUI(I&T)	90
P119	PLANNED INFORMATION AND TECHNOLOGY - ZONE 3	OUI(I&T)	70
P120	PLANNED INFORMATION AND TECHNOLOGY - ZONE 3	OUI(I&T)	70
P121	PLANNED INFORMATION AND TECHNOLOGY - ZONE 3	OUI(I&T)	70
P122	PLANNED INFORMATION AND TECHNOLOGY - ZONE 3	OUI(I&T)	110
P123	PLANNED INFORMATION AND TECHNOLOGY - ZONE 3 (GOVERNMENT DATA CENTRE)	OUI(I&T)	50
P124	PLANNED INFORMATION AND TECHNOLOGY - ZONE 3 (GOVERNMENT DATA CENTRE)	OUI(I&T)	50
P125	PLANNED INFORMATION AND TECHNOLOGY - ZONE 3	OUI(I&T)	70
P126	PLANNED INFORMATION AND TECHNOLOGY - ZONE 3	OUI(I&T)	90
P127	PLANNED INFORMATION AND TECHNOLOGY - ZONE 1	OUI(I&T)	20
P128	PLANNED INFORMATION AND TECHNOLOGY - ZONE 1	OUI(I&T)	90
P129	PLANNED INFORMATION AND TECHNOLOGY - ZONE 1	OUI(I&T)	80
P130	PLANNED INFORMATION AND TECHNOLOGY - ZONE 3	OUI(I&T)	130
P141	PLANNED INFORMATION AND TECHNOLOGY - ZONE 5	OUI(I&T)	30

CUT LINE A-A
 SEE DRAWING NOS. 60670882/A34/FIGURE 3.1.2 & 3.1.3

ASR	DESCRIPTION	LAND USE	MAXIMUM ASSESSMENT HEIGHT (mAG)
P130	PLANNED INFORMATION AND TECHNOLOGY - ZONE 3	OUI(I&T)	130
P131	PLANNED INFORMATION AND TECHNOLOGY - ZONE 3	OUI(I&T)	120
P132	PLANNED INFORMATION AND TECHNOLOGY - ZONE 3	OUI(I&T)	120
P133	PLANNED INFORMATION AND TECHNOLOGY - ZONE 3	OUI(I&T)	130
P134	PLANNED INFORMATION AND TECHNOLOGY - ZONE 3 (DATA CENTRE)	OUI(I&T)	60
P135	PLANNED INFORMATION AND TECHNOLOGY - ZONE 3 (DATA CENTRE)	OUI(I&T)	60
P136	PLANNED INFORMATION AND TECHNOLOGY - ZONE 3 (DATA CENTRE)	OUI(I&T)	80
P137	PLANNED AFCD FISHERIES RESEARCH CENTRE	OUI(I&T)	10
P138	PLANNED CUSTOMS DOG BASE	GIC	10
P139	PLANNED CUSTOMS DOG BASE	GIC	10
P140	PLANNED INFORMATION AND TECHNOLOGY - ZONE 5	OUI(I&T)	30



PROJECT
 項目
 FIRST PHASE DEVELOPMENT OF THE NEW TERRITORIES NORTH - SAN TIN / LOK MA CHAU DEVELOPMENT NODE - INVESTIGATION

CLIENT
 業主
 土木工程拓展署
 Civil Engineering and Development Department
 規劃署
 Planning Department

CONSULTANT
 顧問公司
 AECOM Asia Company Ltd.
 www.aecom.com

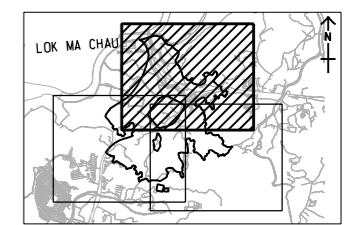
SUB-CONSULTANTS
 分判工程師/顧問公司

ISSUE/REVISION
 修訂

IR	DATE	DESCRIPTION	CHK.

SCALE
 比例
 A3 1:10000
DIMENSION UNIT
 尺寸單位
 METRES

KEY PLAN
 索引圖
 A3 1:200000



PROJECT NO.
 項目編號
 60670882
AGREEMENT NO.
 協議編號
 CE 20/2021

SHEET TITLE
 圖紙名稱
 LOCATIONS OF REPRESENTATIVE SENSITIVE RECEIVERS

SHEET NUMBER
 圖紙編號
 60670882/A34/FIGURE 3.1.1
 SHEET 1 OF 3

This drawing has been prepared for the use of AECOM's client. It may not be used, modified, reproduced or relied upon by third parties, except as agreed by AECOM or as required by law. AECOM accepts no responsibility, and disclaims any liability, whatsoever, for any gain, loss or damage, arising from this drawing, without AECOM's express written consent. All measurements must be obtained from the stated dimensions.

ISO A1 594mm x 841mm
 Approved:
 Checked:
 Designer:
 Project Management Initials:
 Plot File by: YaoFB
 PATH: P:\PROJECTS\60670882\DRAWING\REPORT\A34\A34_403.dgn
 27/12/2023

NOTES:

- FOR NOTES AND LEGEND REFER TO DRAWING NO. 60670882/A34/Figure 3.1.1.
- THIS DRAWING TO BE READ IN CONJUNCTION WITH DRAWING NOS. 60670882/A34/Figure 3.1.1 TO 3.1.3.



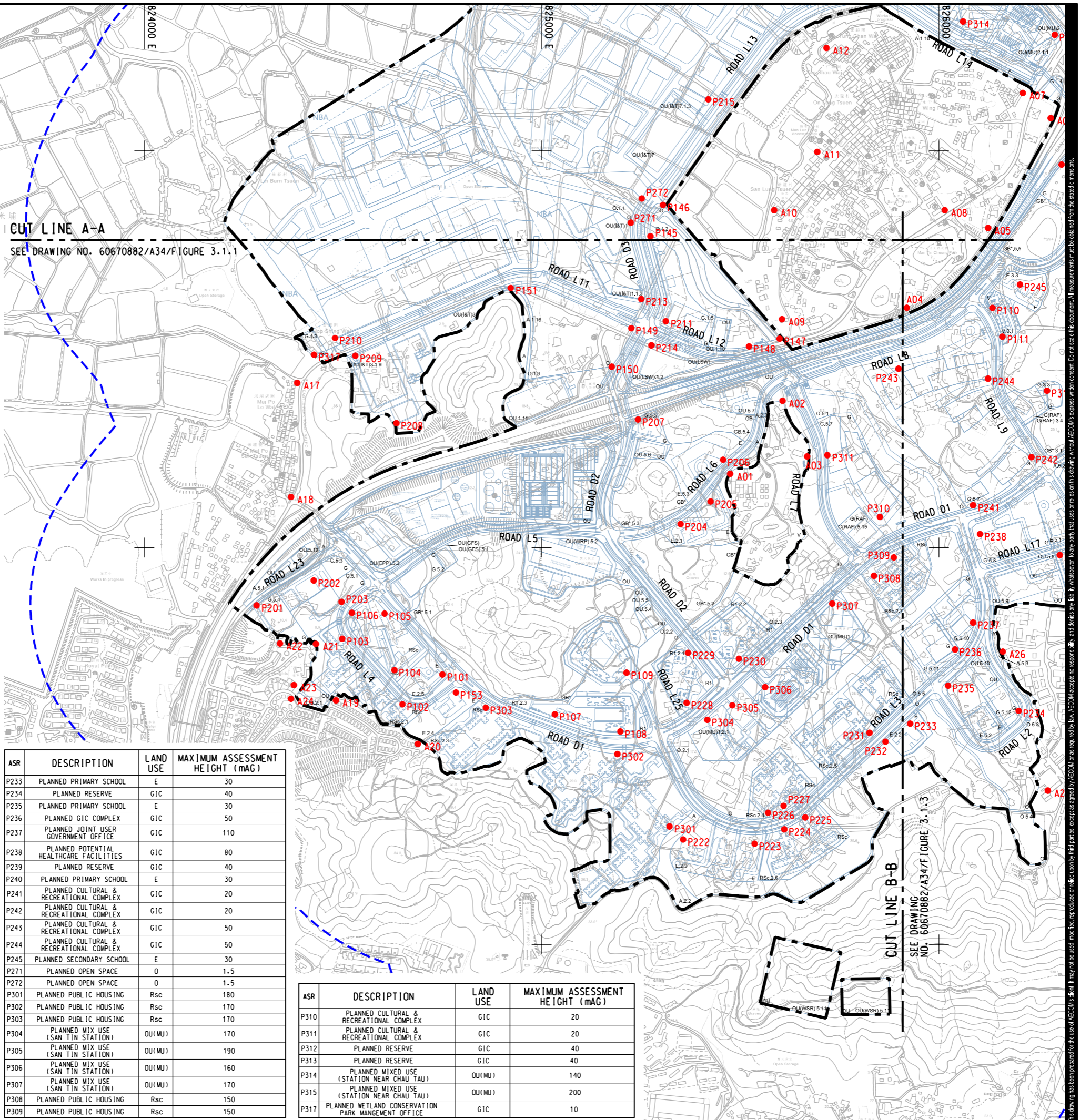
840000 N

ASR	DESCRIPTION	LAND USE	MAXIMUM ASSESSMENT HEIGHT (mAG)
A01	SHEK WU WAI	V	10
A02	SHEK WU WAI	V	10
A03	SHEK WU WAI	V	10
A04	VILLAGE HOUSE	V	10
A05	SAN TIN VILLAGE	V	10
A06	SITE OFFICE	V	10
A07	WING PING TSUEN	V	10
A08	TUN YU SCHOOL	E	10
A09	TSING LUNG TSUEN	V	10
A10	SAN LUNG TSUEN	V	10
A11	FAN TIN TSUEN	V	10
A12	YAN SHAU WAI	V	10
A17	MAI PO SAN TSUEN	V	10
A18	MAI PO SAN TSUEN	V	10
A19	ROLLING HILLS	R	10
A20	ROLLING HILLS	R	10
A21	SCENIC HEIGHTS	R	10
A22	SCENIC HEIGHTS	R	10
A23	MAPLE GARDEN	R	10
A24	MAPLE GARDEN	R	10
A25	SAN TIN BARRACKS	N/A	5
A26	SAN TIN BARRACKS	N/A	15
P101	PLANNED PRIMARY SCHOOL	E	30
P102	PLANNED PUBLIC HOUSING	Rsc	150
P103	PLANNED PUBLIC HOUSING	Rsc	160
P104	PLANNED PUBLIC HOUSING	Rsc	150
P105	PLANNED PUBLIC HOUSING	Rsc	150
P106	PLANNED PUBLIC HOUSING	Rsc	160
P107	PLANNED PRIVATE HOUSING	R	150
P108	PLANNED PRIVATE HOUSING	R	150
P109	PLANNED PRIVATE HOUSING	R	130
P110	PLANNED VILLAGE RESITE	V	10
P111	PLANNED VILLAGE RESITE	V	10
P145	PLANNED OPEN SPACE	O	1.5
P146	PLANNED OPEN SPACE	O	1.5
P147	PLANNED OPEN SPACE	O	1.5
P148	PLANNED OPEN SPACE	O	1.5
P149	PLANNED OPEN SPACE	O	1.5
P150	PLANNED OPEN SPACE	O	1.5
P151	PLANNED OPEN SPACE	O	1.5
P153	PLANNED SECONDARY SCHOOL	E	30
P201	PLANNED RESERVE	GIC	40
P202	PLANNED FIRE SERVICE NT WORKSHOP, UNIFORM STORE AND GENERAL STORE	GIC	10
P203	PLANNED SPORTS CENTRE	GIC	30
P204	PLANNED 2 PRIMARY SCHOOL	E	30
P205	PLANNED 2 PRIMARY SCHOOL	E	30
P206	PLANNED RESERVE (POTENTIAL EDUCATION FACILITIES)	E	40
P207	PLANNED RESERVE	GIC	40
P208	PLANNED INFORMATION AND TECHNOLOGY - ZONE 3	OUI(I&T)	110
P209	PLANNED INFORMATION AND TECHNOLOGY - ZONE 3	OUI(I&T)	110
P210	PLANNED INFORMATION AND TECHNOLOGY - ZONE 1	OUI(I&T)	80
P211	PLANNED LOK MA CHAU POLICE STATION, CUM OPERATIONAL BASE, PETROL STATION AND DANGEROUS GOODS STORAGE	GIC	30
P213	PLANNED INFORMATION AND TECHNOLOGY - ZONE 1	OUI(I&T)	5
P214	PLANNED LOGISTICS, STORAGE AND WAREHOUSE	OUI(LSW)	50
P215	PLANNED INFORMATION AND TECHNOLOGY - ZONE 1	OUI(I&T)	60
P222	PLANNED 3 SECONDARY SCHOOL	E	30
P223	PLANNED 3 SECONDARY SCHOOL	E	30
P224	PLANNED PUBLIC HOUSING	Rsc	150
P225	PLANNED PUBLIC HOUSING	Rsc	150
P226	PLANNED PUBLIC HOUSING	Rsc	150
P227	PLANNED PUBLIC HOUSING	Rsc	150
P228	PLANNED PRIVATE HOUSING	R	140
P229	PLANNED PRIVATE HOUSING	R	140
P230	PLANNED PRIVATE HOUSING	R	140
P231	PLANNED PUBLIC HOUSING	Rsc	150
P232	PLANNED OPEN SPACE	O	10
P233	PLANNED PRIMARY SCHOOL	E	30
P234	PLANNED RESERVE	GIC	40
P235	PLANNED PRIMARY SCHOOL	E	30
P236	PLANNED GIC COMPLEX	GIC	50
P237	PLANNED JOINT USER GOVERNMENT OFFICE	GIC	110
P238	PLANNED POTENTIAL HEALTHCARE FACILITIES	GIC	80
P239	PLANNED RESERVE	GIC	40
P240	PLANNED PRIMARY SCHOOL	E	30
P241	PLANNED CULTURAL & RECREATIONAL COMPLEX	GIC	20
P242	PLANNED CULTURAL & RECREATIONAL COMPLEX	GIC	20
P243	PLANNED CULTURAL & RECREATIONAL COMPLEX	GIC	50
P244	PLANNED CULTURAL & RECREATIONAL COMPLEX	GIC	50
P245	PLANNED SECONDARY SCHOOL	E	30
P271	PLANNED OPEN SPACE	O	1.5
P272	PLANNED OPEN SPACE	O	1.5
P301	PLANNED PUBLIC HOUSING	Rsc	180
P302	PLANNED PUBLIC HOUSING	Rsc	170
P303	PLANNED PUBLIC HOUSING	Rsc	170
P304	PLANNED MIX USE (SAN TIN STATION)	OUI(MU)	170
P305	PLANNED MIX USE (SAN TIN STATION)	OUI(MU)	190
P306	PLANNED MIX USE (SAN TIN STATION)	OUI(MU)	160
P314	PLANNED MIXED USE (STATION NEAR CHAU TAU)	OUI(MU)	140
P315	PLANNED MIXED USE (STATION NEAR CHAU TAU)	OUI(MU)	200
P307	PLANNED PUBLIC HOUSING	Rsc	150
P309	PLANNED PUBLIC HOUSING	Rsc	150
P317	PLANNED WETLAND CONSERVATION PARK MANAGEMENT OFFICE	GIC	10

CUT LINE A-A
SEE DRAWING NO. 60670882/A34/Figure 3.1.1

ASR	DESCRIPTION	LAND USE	MAXIMUM ASSESSMENT HEIGHT (mAG)
P233	PLANNED PRIMARY SCHOOL	E	30
P234	PLANNED RESERVE	GIC	40
P235	PLANNED PRIMARY SCHOOL	E	30
P236	PLANNED GIC COMPLEX	GIC	50
P237	PLANNED JOINT USER GOVERNMENT OFFICE	GIC	110
P238	PLANNED POTENTIAL HEALTHCARE FACILITIES	GIC	80
P239	PLANNED RESERVE	GIC	40
P240	PLANNED PRIMARY SCHOOL	E	30
P241	PLANNED CULTURAL & RECREATIONAL COMPLEX	GIC	20
P242	PLANNED CULTURAL & RECREATIONAL COMPLEX	GIC	20
P243	PLANNED CULTURAL & RECREATIONAL COMPLEX	GIC	50
P244	PLANNED CULTURAL & RECREATIONAL COMPLEX	GIC	50
P245	PLANNED SECONDARY SCHOOL	E	30
P271	PLANNED OPEN SPACE	O	1.5
P272	PLANNED OPEN SPACE	O	1.5
P301	PLANNED PUBLIC HOUSING	Rsc	180
P302	PLANNED PUBLIC HOUSING	Rsc	170
P303	PLANNED PUBLIC HOUSING	Rsc	170
P304	PLANNED MIX USE (SAN TIN STATION)	OUI(MU)	170
P305	PLANNED MIX USE (SAN TIN STATION)	OUI(MU)	190
P306	PLANNED MIX USE (SAN TIN STATION)	OUI(MU)	160
P314	PLANNED MIXED USE (STATION NEAR CHAU TAU)	OUI(MU)	140
P315	PLANNED MIXED USE (STATION NEAR CHAU TAU)	OUI(MU)	200
P307	PLANNED PUBLIC HOUSING	Rsc	150
P309	PLANNED PUBLIC HOUSING	Rsc	150

ASR	DESCRIPTION	LAND USE	MAXIMUM ASSESSMENT HEIGHT (mAG)
P310	PLANNED CULTURAL & RECREATIONAL COMPLEX	GIC	20
P311	PLANNED CULTURAL & RECREATIONAL COMPLEX	GIC	20
P312	PLANNED RESERVE	GIC	40
P313	PLANNED RESERVE	GIC	40
P314	PLANNED MIXED USE (STATION NEAR CHAU TAU)	OUI(MU)	140
P315	PLANNED MIXED USE (STATION NEAR CHAU TAU)	OUI(MU)	200
P317	PLANNED WETLAND CONSERVATION PARK MANAGEMENT OFFICE	GIC	10



AECOM

PROJECT

FIRST PHASE DEVELOPMENT OF THE NEW TERRITORIES NORTH – SAN TIN / LOK MA CHAU DEVELOPMENT NODE – INVESTIGATION

CLIENT

CEDD 土木工程拓展署
Civil Engineering and Development Department

規劃署
Planning Department

CONSULTANT

AECOM Asia Company Ltd.
www.aecom.com

SUB-CONSULTANTS

ISSUE/REVISION

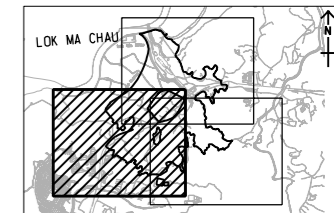
IR	DATE	DESCRIPTION	CHK.

STATUS

SCALE DIMENSION UNIT

A3 1:10000 METRES

KEY PLAN A3 1:200000



PROJECT NO. AGREEMENT NO.

60670882 CE 20/2021

SHEET TITLE

LOCATIONS OF REPRESENTATIVE SENSITIVE RECEIVERS

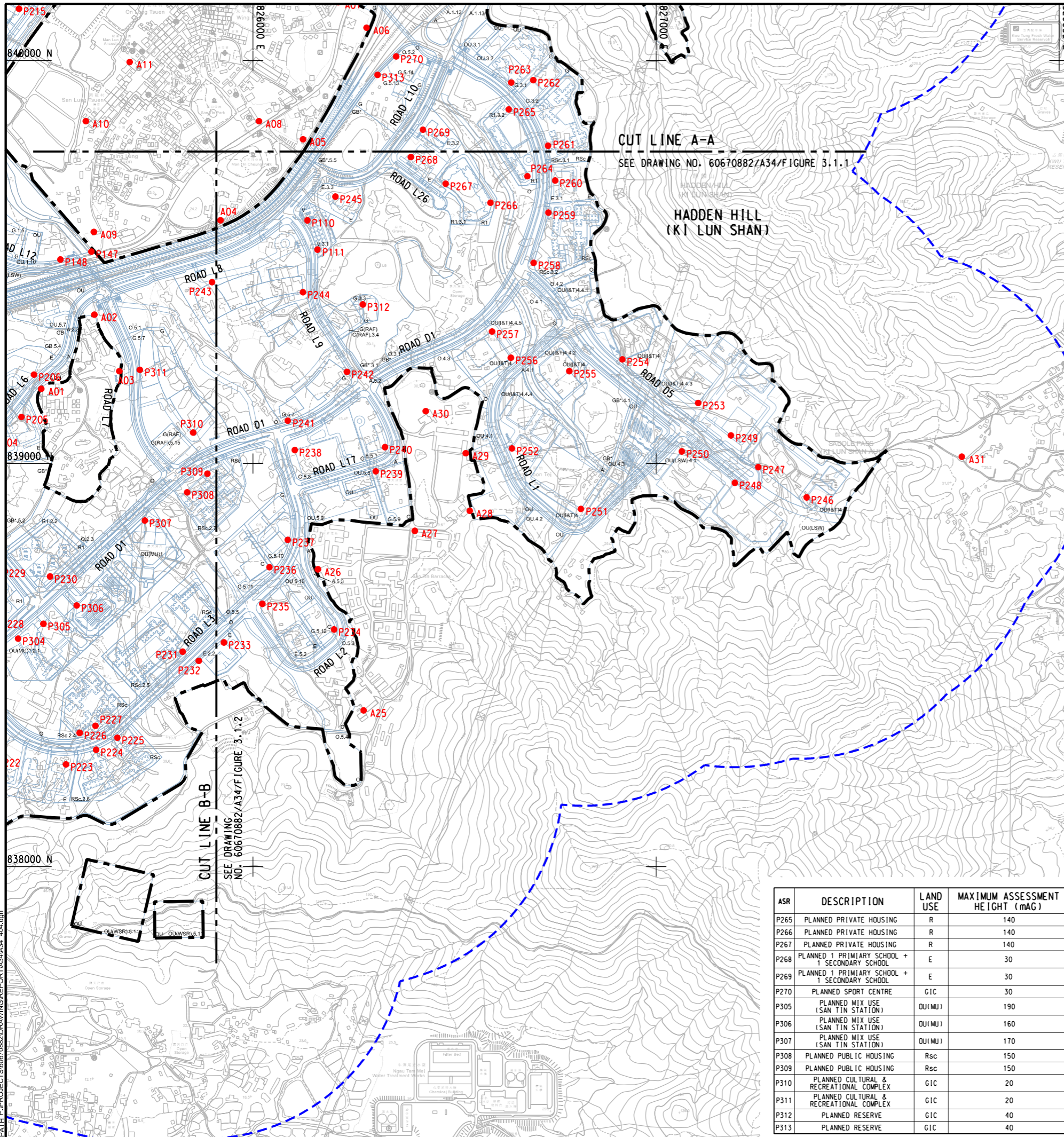
SHEET NUMBER

60670882/A34/FIGURE 3.1.2

SHEET 2 OF 3

This drawing has been prepared for the use of AECOM's client. It may not be used, modified, reproduced or relied upon by third parties, except as agreed by AECOM in writing. AECOM accepts no responsibility, and disclaims any liability, whatsoever, for any error, omission or inaccuracy in this drawing without AECOM's express written consent. All measurements must be obtained from the stated dimensions.

ISO A1 594mm x 841mm
 Approved:
 Checked:
 Designer:
 Project Management Initials:
 Photo File by: vicky.xia1
 PATH: P:\PROJECTS\60670882\DRAWING\REPORT\A34\A34_404.dgn
 12/27/2023
 60670882\DRAWING\REPORT\A34\A34_404.dgn



NOTES:

- FOR NOTES AND LEGEND REFER TO DRAWING NO. 60670882/A34/FIGURE 3.1.1.
- THIS DRAWING TO BE READ IN CONJUNCTION WITH DRAWING NOS. 60670882/A34/FIGURE 3.1.1 TO 3.1.3.



CUT LINE A-A
SEE DRAWING NO. 60670882/A34/FIGURE 3.1.1

HADDEN HILL (KI LUN SHAN)



CUT LINE B-B
SEE DRAWING NO. 60670882/A34/FIGURE 3.1.2

ASR	DESCRIPTION	LAND USE	MAXIMUM ASSESSMENT HEIGHT (mAG)
A01	SHEK WU WAI	V	10
A02	SHEK WU WAI	V	10
A03	SHEK WU WAI	V	10
A04	VILLAGE HOUSE	V	10
A05	SAN TIN VILLAGE	V	10
A06	SITE OFFICE	V	10
A08	TUN YU SCHOOL	E	10
A09	TSING LUNG TSUEN	V	10
A10	SAN LUNG TSUEN	V	10
A11	FAN TIN TSUEN	V	10
A25	SAN TIN BARRACKS	N/A	5
A26	SAN TIN BARRACKS	N/A	15
A27	SAN TIN BARRACKS	N/A	5
A28	SAN TIN BARRACKS	N/A	10
A29	SAN TIN BARRACKS	N/A	15
A30	SAN TIN BARRACKS	N/A	5
A31	KI LUN TSUEN	V	1.5
P110	PLANNED VILLAGE RESITE	V	10
P111	PLANNED VILLAGE RESITE	V	10
P147	PLANNED OPEN SPACE	O	1.5
P148	PLANNED OPEN SPACE	O	1.5
P205	PLANNED 2 PRIMARY SCHOOL	E	30
P206	PLANNED RESERVE (POTENTIAL EDUCATION FACILITIES)	GIC	40
P215	PLANNED INFORMATION AND TECHNOLOGY - ZONE 1	OU(I&T)	60
P223	PLANNED 3 SECONDARY SCHOOL	E	30
P224	PLANNED PUBLIC HOUSING	Rsc	150
P225	PLANNED PUBLIC HOUSING	Rsc	150
P226	PLANNED PUBLIC HOUSING	Rsc	150
P227	PLANNED PUBLIC HOUSING	Rsc	150
P228	PLANNED PRIVATE HOUSING	R	140
P230	PLANNED PRIVATE HOUSING	R	140
P231	PLANNED PUBLIC HOUSING	Rsc	150
P232	PLANNED URBAN FARM	OU(UF)	10
P233	PLANNED PRIMARY SCHOOL	E	30
P234	PLANNED RESERVE	GIC	40
P235	PLANNED PRIMARY SCHOOL	E	30
P236	PLANNED GIC COMPLEX	GIC	50
P237	PLANNED JOINT USER GOVERNMENT OFFICE	GIC	110
P238	PLANNED POTENTIAL HEALTHCARE FACILITIES	GIC	80
P239	PLANNED RESERVE	GIC	40
P240	PLANNED PRIMARY SCHOOL	E	30
P241	PLANNED CULTURAL & RECREATIONAL COMPLEX	GIC	20
P242	PLANNED CULTURAL & RECREATIONAL COMPLEX	GIC	20
P243	PLANNED CULTURAL & RECREATIONAL COMPLEX	GIC	50
P244	PLANNED CULTURAL & RECREATIONAL COMPLEX	GIC	50
P245	PLANNED SECONDARY SCHOOL	E	30
P246	PLANNED INFORMATION AND TECHNOLOGY - ZONE 4	OU(I&T)	120
P247	PLANNED INFORMATION AND TECHNOLOGY - ZONE 4	OU(I&T)	120
P248	PLANNED LOGISTICS, STORAGE AND WAREHOUSE	OU(LSW)	150
P249	PLANNED INFORMATION AND TECHNOLOGY - ZONE 4	OU(I&T)	130
P250	PLANNED LOGISTICS, STORAGE AND WAREHOUSE	OU(LSW)	150
P251	PLANNED INFORMATION AND TECHNOLOGY - ZONE 4	OU(I&T)	140
P252	PLANNED INFORMATION AND TECHNOLOGY - ZONE 4	OU(I&T)	90
P253	PLANNED INFORMATION AND TECHNOLOGY - ZONE 4	OU(I&T)	140
P254	PLANNED INFORMATION AND TECHNOLOGY - ZONE 4	OU(I&T)	130
P255	PLANNED INFORMATION AND TECHNOLOGY - ZONE 4	OU(I&T)	150
P256	PLANNED INFORMATION AND TECHNOLOGY - ZONE 4	OU(I&T)	150
P257	PLANNED INFORMATION AND TECHNOLOGY - ZONE 4	OU(I&T)	160
P258	PLANNED PUBLIC HOUSING	Rsc	150
P259	PLANNED PUBLIC HOUSING	Rsc	150
P260	PLANNED PRIMARY SCHOOL	E	30
P261	PLANNED PUBLIC HOUSING	Rsc	150
P262	PLANNED YOUTH FACILITIES	GIC	80
P263	PLANNED FSD STAFF QUARTERS, DIVISIONAL FIRE STATION-CUM-AMBULANCE DEPOT, OPERATIONAL BASE FOR TACTICAL SUPPORT UNIT AND COMMUNITY EMERGENCY PREPAREDNESS EXPERIENTIAL LEARNING	GIC	190
P264	PLANNED PRIVATE HOUSING	R	140

ASR	DESCRIPTION	LAND USE	MAXIMUM ASSESSMENT HEIGHT (mAG)
P265	PLANNED PRIVATE HOUSING	R	140
P266	PLANNED PRIVATE HOUSING	R	140
P267	PLANNED PRIVATE HOUSING	R	140
P268	PLANNED 1 PRIMARY SCHOOL + SECONDARY SCHOOL	E	30
P269	PLANNED 1 PRIMARY SCHOOL + SECONDARY SCHOOL	E	30
P270	PLANNED SPORT CENTRE	GIC	30
P305	PLANNED MIX USE (SAN TIN STATION)	OU(MU)	190
P306	PLANNED MIX USE (SAN TIN STATION)	OU(MU)	160
P307	PLANNED MIX USE (SAN TIN STATION)	OU(MU)	170
P308	PLANNED PUBLIC HOUSING	Rsc	150
P309	PLANNED PUBLIC HOUSING	Rsc	150
P310	PLANNED CULTURAL & RECREATIONAL COMPLEX	GIC	20
P311	PLANNED CULTURAL & RECREATIONAL COMPLEX	GIC	20
P312	PLANNED RESERVE	GIC	40
P313	PLANNED RESERVE	GIC	40



PROJECT
 項目
FIRST PHASE DEVELOPMENT OF THE NEW TERRITORIES NORTH - SAN TIN / LOK MA CHAU DEVELOPMENT NODE - INVESTIGATION

CLIENT
 委託
 **土木工程拓展署**
 Civil Engineering and Development Department
 **規劃署**
 Planning Department

CONSULTANT
 工程顧問公司
 AECOM Asia Company Ltd.
 www.aecom.com

SUB-CONSULTANTS
 分判工程顧問公司

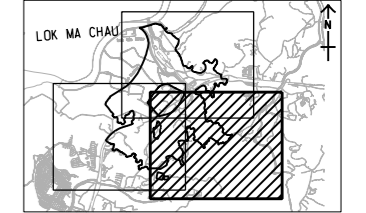
ISSUE/REVISION
 修訂

IR	DATE	DESCRIPTION	CHK.

STATUS
 階段

SCALE
 比例
 A3 1:10000
DIMENSION UNIT
 尺寸單位
 METRES

KEY PLAN
 索引圖
 A3 1:20000



PROJECT NO.
 項目編號
 60670882
AGREEMENT NO.
 協議編號
 CE 20/2021

SHEET TITLE
 圖紙名稱
LOCATIONS OF REPRESENTATIVE SENSITIVE RECEIVERS

SHEET NUMBER
 圖紙編號
 60670882/A34/FIGURE 3.1.3
 SHEET 3 OF 3

This drawing has been prepared for the use of AECOM's client. It may not be used, modified, reproduced or relied upon by third parties, except as agreed by AECOM or as required by law. AECOM accepts no responsibility, and disclaims any liability whatsoever, for any gain, loss or damage on this drawing without AECOM's express written consent. All measurements must be obtained from the stated dimensions.