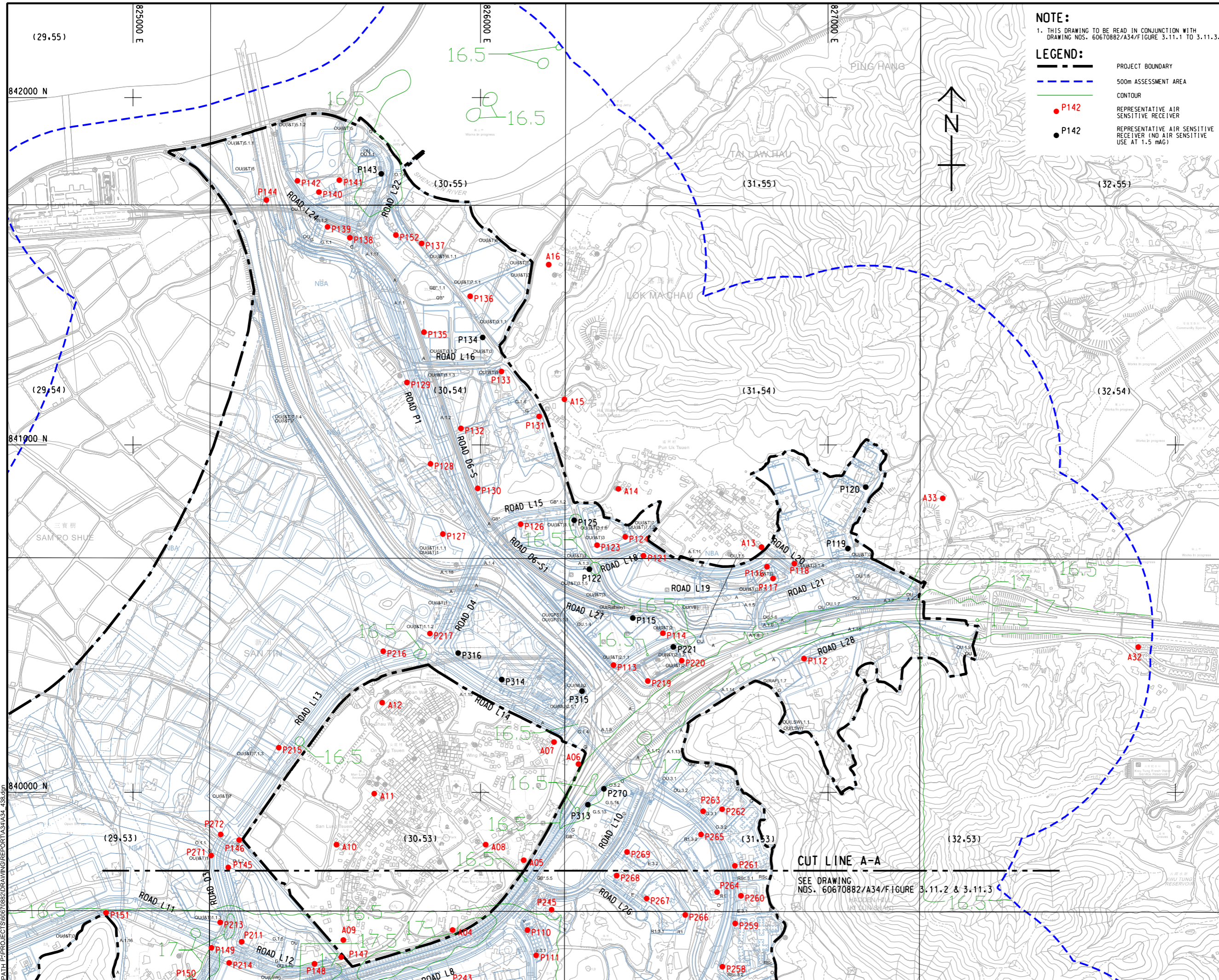


ISO A1 594mm x 841mm
 Approved:
 Checked:
 Designer:
 Project Management Initials:



NOTE:
 1. THIS DRAWING TO BE READ IN CONJUNCTION WITH DRAWING NOS. 60670882/A34/FIGURE 3.11.1 TO 3.11.3.

LEGEND:

- PROJECT BOUNDARY
- 500m ASSESSMENT AREA
- CONTOUR
- P142 REPRESENTATIVE AIR SENSITIVE RECEIVER
- P142 REPRESENTATIVE AIR SENSITIVE RECEIVER (NO AIR SENSITIVE USE AT 1.5 mAg)

AECOM

PROJECT
 項目
 FIRST PHASE DEVELOPMENT OF THE NEW TERRITORIES NORTH – SAN TIN / LOK MA CHAU DEVELOPMENT NODE – INVESTIGATION

CLIENT
 業主
 土木工程拓展署
 Civil Engineering and Development Department
 規劃署
 Planning Department

CONSULTANT
 工程顧問公司
 AECOM Asia Company Ltd.
 www.aecom.com

SUB-CONSULTANTS
 分判工程顧問公司

ISSUE/REVISION
 修訂

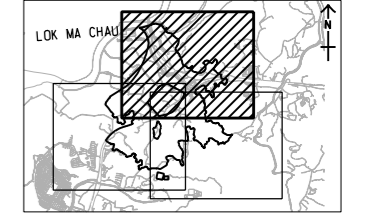
IR	DATE	DESCRIPTION	CHK.

STATUS
 階段

SCALE
 比例
 A3 1:10000

DIMENSION UNIT
 尺寸單位
 METRES

KEY PLAN A3 1:200000



PROJECT NO.
 項目編號
 60670882

AGREEMENT NO.
 協議編號
 CE 20/2021

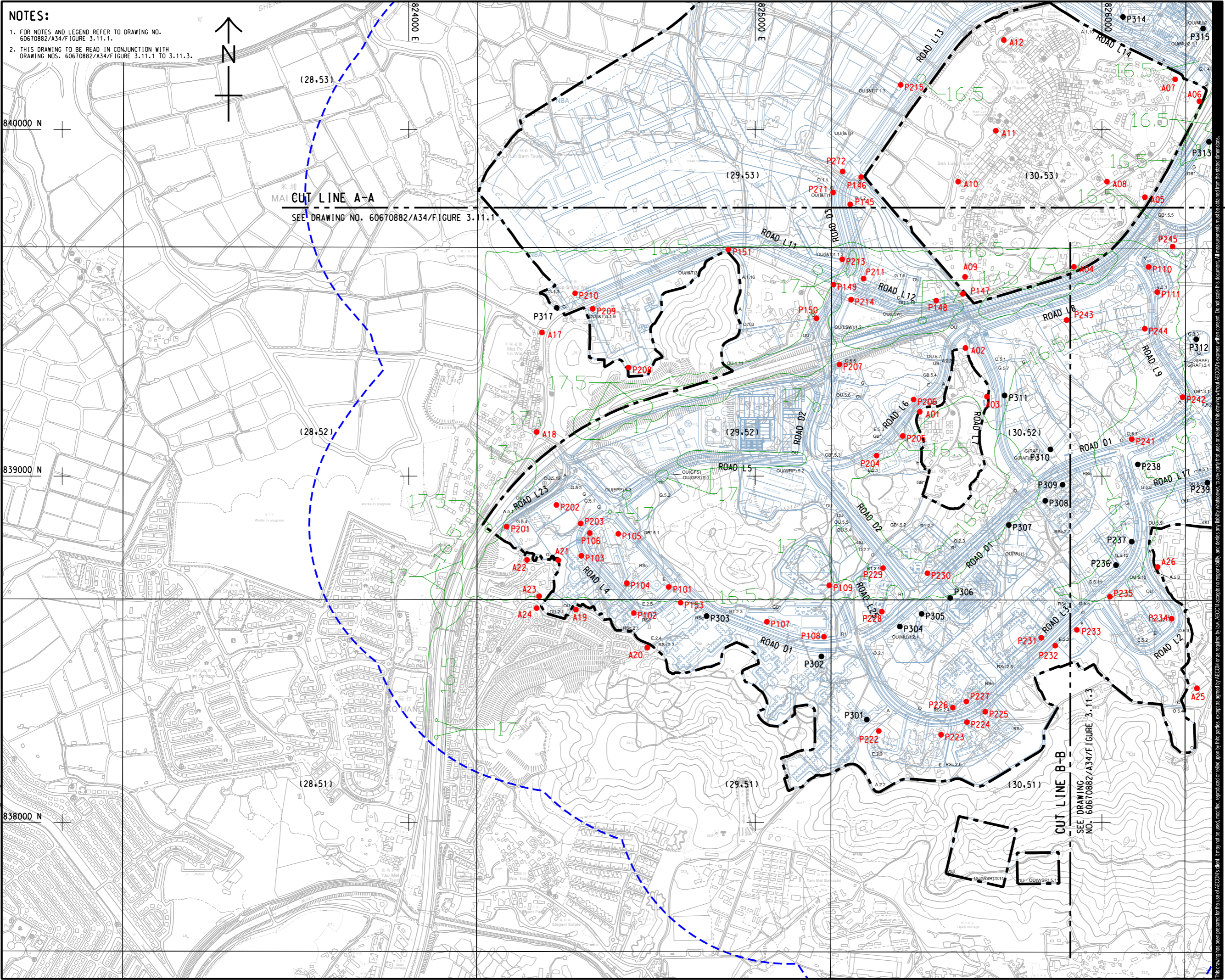
SHEET TITLE
 圖紙名稱
 CONTOUR OF PREDICTED CUMULATIVE ANNUAL FSP CONCENTRATION AT 1.5 mAg (µg/m3) (YEAR 2034) SHEET 1 OF 3

SHEET NUMBER
 圖紙編號
 60670882/A34/FIGURE 3.11.1

Plot File by: YueFB
 PATH: P:\PROJECTS\60670882\DRAWING\REPORT\A34\A34_138.dgn
 9/12/2023

This drawing has been prepared for the use of AECOM's client. It may not be used, modified, reproduced or relied upon by third parties, except as agreed by AECOM or as required by law. AECOM accepts no responsibility, and disclaims any liability, whatsoever, for any part, in whole or in part, of this drawing without AECOM's express written consent. All measurements must be obtained from the stated dimensions.

ISO A1 594mm x 841mm
Approved:
Checked:
Designer:
Project Management Initials:
Plot File by: YueFB
PATH: P:\PROJECTS\60670882\DRAWING\REPORT\A3\A34_439.dgn
9/10/2023



NOTES:

- FOR NOTES AND LEGEND REFER TO DRAWING NO. 60670882/A34/Figure 3.11.1.
- THIS DRAWING TO BE READ IN CONJUNCTION WITH DRAWING NOS. 60670882/A34/Figure 3.11.1 TO 3.11.3.

CUT LINE A-A
SEE DRAWING NO. 60670882/A34/Figure 3.11.1

CUT LINE B-B
SEE DRAWING NO. 60670882/A34/Figure 3.11.3



PROJECT
項目
FIRST PHASE DEVELOPMENT OF THE NEW TERRITORIES NORTH – SAN TIN / LOK MA CHAU DEVELOPMENT NODE – INVESTIGATION

CLIENT
業主
 土木工程拓展署
Civil Engineering and Development Department
 規劃署
Planning Department

CONSULTANT
顧問公司
AECOM Asia Company Ltd.
www.aecom.com

SUB-CONSULTANTS
分包工程師公司

ISSUE/REVISION
項目

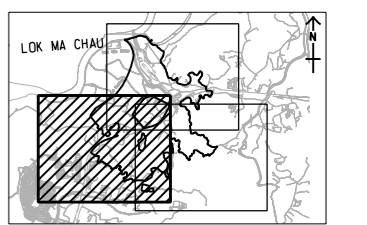
IR	DATE	DESCRIPTION	CHK.

STATUS
階段

SCALE
比例
A3 1:10000

DIMENSION UNIT
尺寸單位
METRES

KEY PLAN A3 1:200000



PROJECT NO.
項目編號
60670882

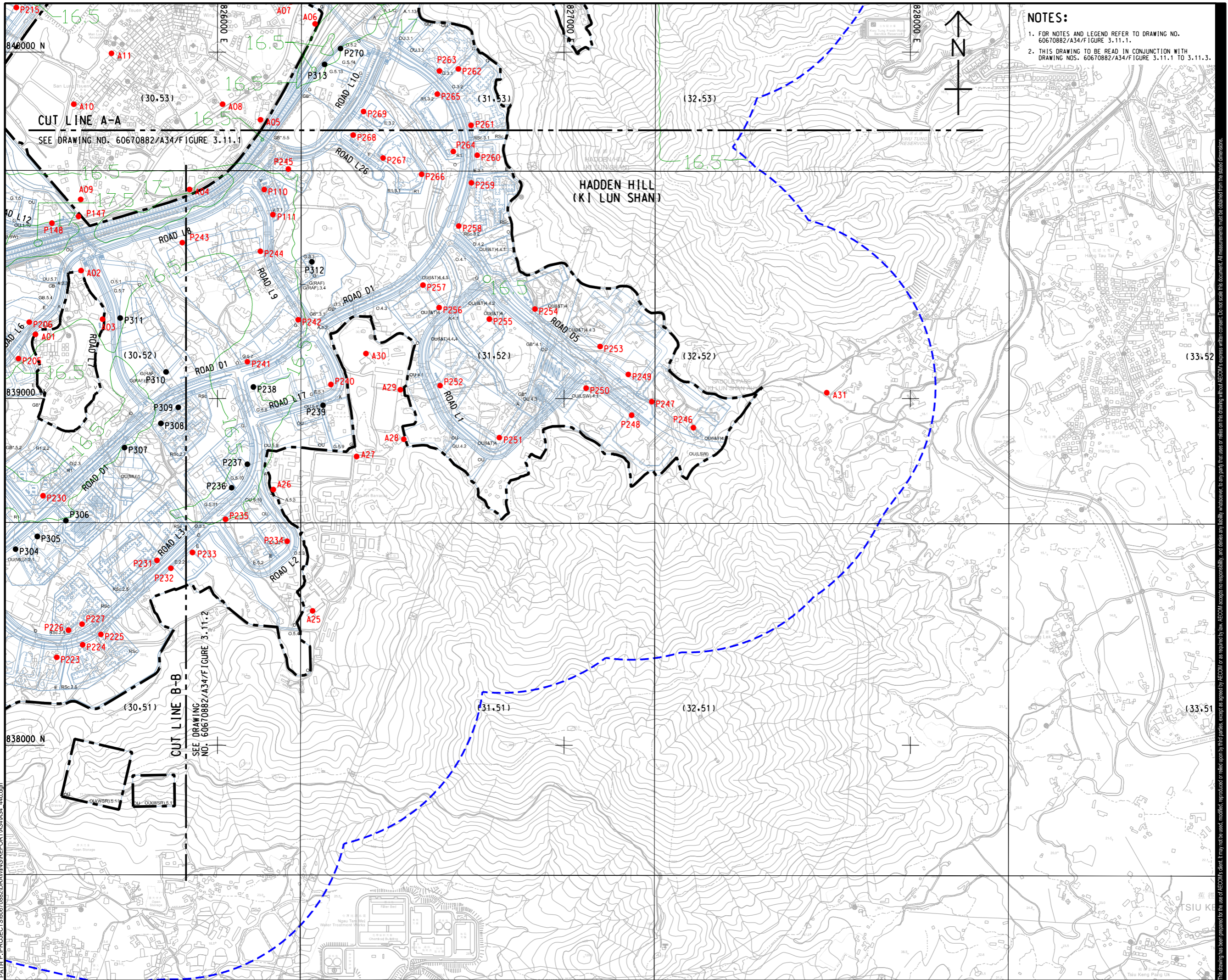
AGREEMENT NO.
協議編號
CE 20/2021

SHEET TITLE
圖紙名稱
CONTOUR OF PREDICTED CUMULATIVE ANNUAL FSP CONCENTRATION AT 1.5 μg/m³ (μg/m³) (YEAR 2034) SHEET 2 OF 3

SHEET NUMBER
圖紙編號
60670882/A34/FIGURE 3.11.2

This drawing has been prepared for the use of AECOM's client. It may not be used, modified, reproduced or relied upon by third parties, except as agreed by AECOM in writing. AECOM accepts no responsibility, and disclaims any liability, whatsoever, for any loss, that arises or may arise from this drawing without AECOM's express written consent. All measurements must be obtained from the stated dimensions.

ISO A1 594mm x 841mm
 Approved:
 Checked:
 Designer:
 Project Management Initials:
 9/12/2023
 PATH PROJECTS/60670882/DRAWINGREPORT/A3/A34_440.dgn
 This drawing has been prepared for the use of AECOM's client. It may not be used, modified, reproduced or relied upon by third parties, except as agreed by AECOM or as required by law. AECOM accepts no responsibility, and disclaims any liability whatsoever, for any part, that, in whole or in part, is based on this drawing without AECOM's express written consent. All measurements must be obtained from the stated dimensions.



NOTES:

- FOR NOTES AND LEGEND REFER TO DRAWING NO. 60670882/A34/FIGURE 3.11.1.
- THIS DRAWING TO BE READ IN CONJUNCTION WITH DRAWING NOS. 60670882/A34/FIGURE 3.11.1 TO 3.11.3.

AECOM

PROJECT
 項目
FIRST PHASE DEVELOPMENT OF THE NEW TERRITORIES NORTH – SAN TIN / LOK MA CHAU DEVELOPMENT NODE – INVESTIGATION

CLIENT
 業主
CEDD 土木工程拓展署
 Civil Engineering and Development Department
規劃署
 Planning Department

CONSULTANT
 顧問公司
 AECOM Asia Company Ltd.
 www.aecom.com

SUB-CONSULTANTS
 分判工程師/顧問公司

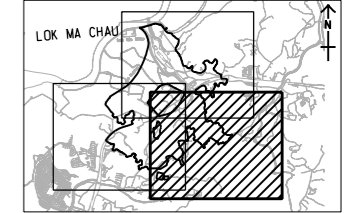
ISSUE/REVISION
 修訂

IR	DATE	DESCRIPTION	CHK.

STATUS
 階段

SCALE **DIMENSION UNIT**
 比例 尺寸單位
 A3 1:10000 METRES

KEY PLAN A3 1:200000
 索引圖



PROJECT NO. **AGREEMENT NO.**
 項目編號 協議編號
 60670882 CE 20/2021

SHEET TITLE
 圖紙名稱
CONTOUR OF PREDICTED CUMULATIVE ANNUAL FSP CONCENTRATION AT 1.5 mg (µg/m³) (YEAR 2034) SHEET 3 OF 3
SHEET NUMBER
 圖紙編號
 60670882/A34/FIGURE 3.11.3