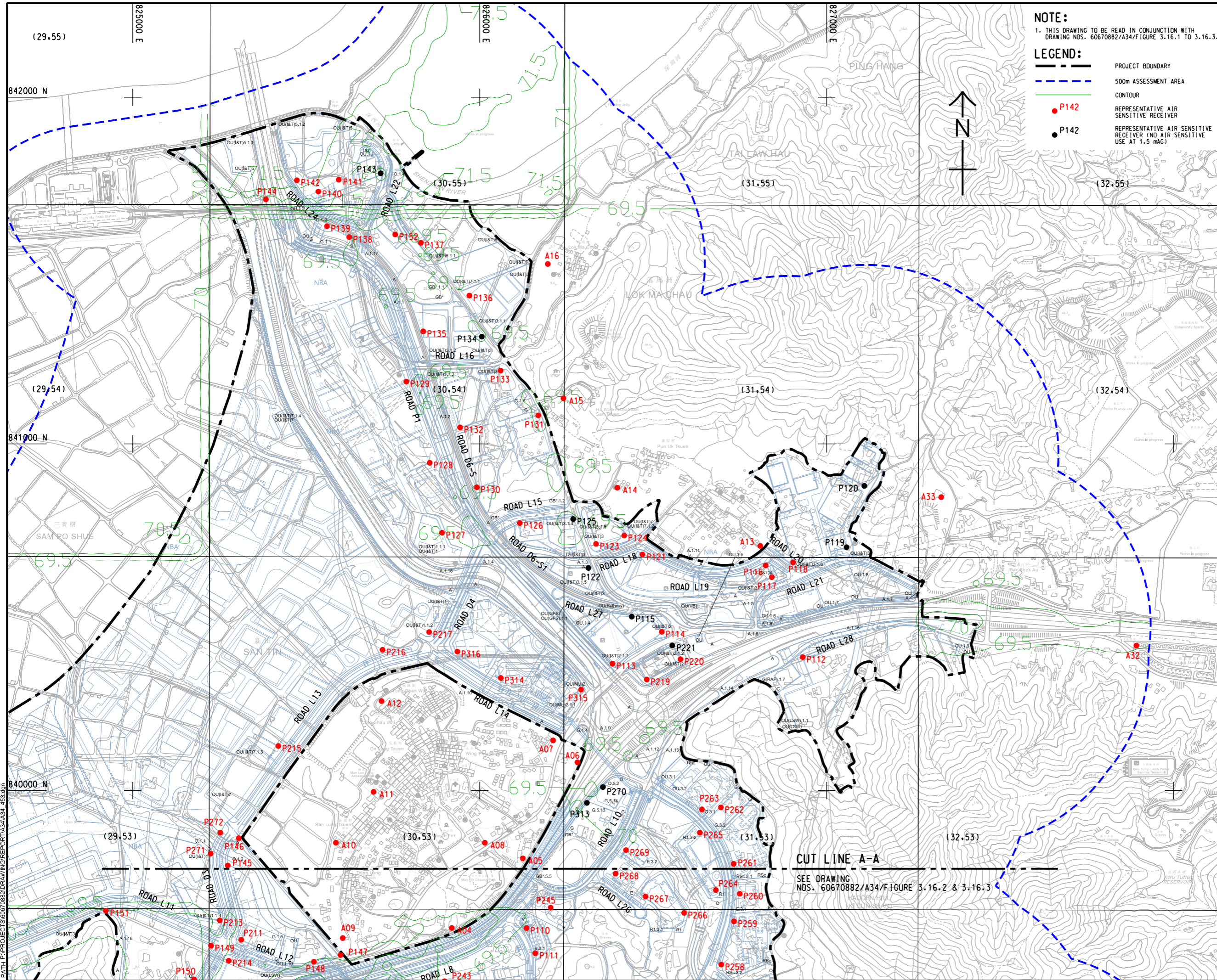


ISO A1 594mm x 841mm  
 Approved:  
 Checked:  
 Designer:  
 Project Management Initials:  
 Plot File by: Yuxuan, the 11/30/2023  
 PATH P:\PROJECTS\60670882\DRAWING\REPORT\A34\A34\_453.dwg



**NOTE:**  
 1. THIS DRAWING TO BE READ IN CONJUNCTION WITH DRAWING NOS. 60670882/A34/FIGURE 3.16.1 TO 3.16.3.

**LEGEND:**

- PROJECT BOUNDARY
- 500m ASSESSMENT AREA
- CONTOUR
- P142 REPRESENTATIVE AIR SENSITIVE RECEIVER
- P142 REPRESENTATIVE AIR SENSITIVE RECEIVER (NO AIR SENSITIVE USE AT 1.5 mAG)

**AECOM**

**PROJECT**  
 項目  
**FIRST PHASE DEVELOPMENT OF THE NEW TERRITORIES NORTH – SAN TIN / LOK MA CHAU DEVELOPMENT NODE – INVESTIGATION**

**CLIENT**  
 業主  
**土木工程拓展署**  
 Civil Engineering and Development Department  
**規劃署**  
 Planning Department

**CONSULTANT**  
 顧問公司  
 AECOM Astla Company Ltd.  
 www.aecom.com

**SUB-CONSULTANTS**  
 分包工程師/顧問公司

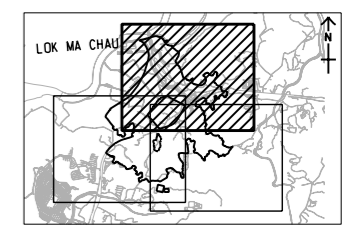
**ISSUE/REVISION**  
 修訂

NO.	DATE	DESCRIPTION	CHK.

**STATUS**  
 階段

**SCALE**  
 比例  
 A3 1: 10000

**DIMENSION UNIT**  
 尺寸單位  
 METRES



**PROJECT NO.**  
 項目編號  
 60670882

**AGREEMENT NO.**  
 協議編號  
 CE 20/2021

**SHEET TITLE**  
 圖紙名稱  
 CONTOUR OF PREDICTED 10TH HIGHEST CUMULATIVE DAILY RSP CONCENTRATION AT 1.5 mAG (ug/m3) (YEAR 2039) SHEET 1 OF 3

**SHEET NUMBER**  
 圖紙編號  
 60670882/A34/FIGURE 3.16.1

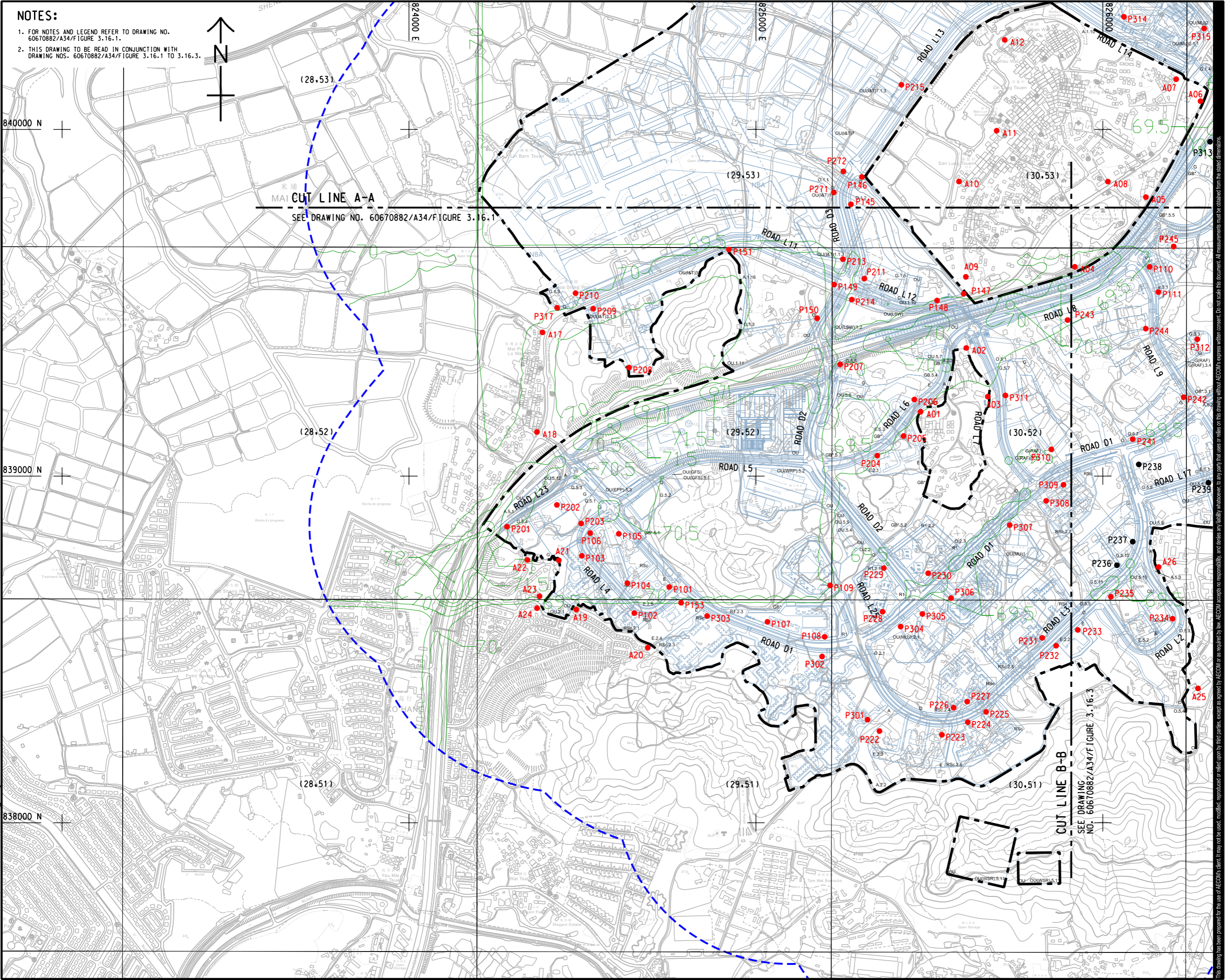
**CUT LINE A-A**  
 SEE DRAWING NOS. 60670882/A34/FIGURE 3.16.2 & 3.16.3

This drawing has been prepared for the use of AECOM's client. It may not be used, modified, reproduced or relied upon by third parties, except as agreed by AECOM in writing. AECOM accepts no responsibility, and denies any liability whatsoever, to any party that assesses or relies on this drawing without AECOM's express written consent. All measurements must be obtained from the stated dimensions.

ISO A1 594mm x 841mm  
 Approved:  
 Checked:  
 Designer:  
 Project Management Initials:  
 Photo by: Yuxuan, He 11/30/2023  
 PATH: P:\PROJECTS\60670882\DRAWING\REPORT\A3\A3\_1\_451.dgn

**NOTES:**

- FOR NOTES AND LEGEND REFER TO DRAWING NO. 60670882/A34/Figure 3.16.1.
- THIS DRAWING TO BE READ IN CONJUNCTION WITH DRAWING NOS. 60670882/A34/Figure 3.16.1 TO 3.16.3.



**PROJECT**  
 項目  
**FIRST PHASE DEVELOPMENT OF THE NEW TERRITORIES NORTH – SAN TIN / LOK MA CHAU DEVELOPMENT NODE – INVESTIGATION**

**CLIENT**  
 業主  
 **土木工程拓展署**  
 Civil Engineering and Development Department  
 **規劃署**  
 Planning Department

**CONSULTANT**  
 顧問公司  
 AECOM Asla Company Ltd.  
 www.aecom.com

**SUB-CONSULTANTS**  
 分包工程師/顧問公司

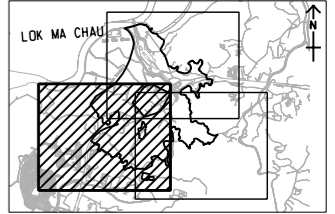
**ISSUE/REVISION**  
 修訂

I/R	DATE	DESCRIPTION	CHK.

**STATUS**  
 階段

**SCALE**      **DIMENSION UNIT**  
 比例      尺寸單位  
 A3 1 : 10000      METRES

**KEY PLAN**      A3 1 : 200000



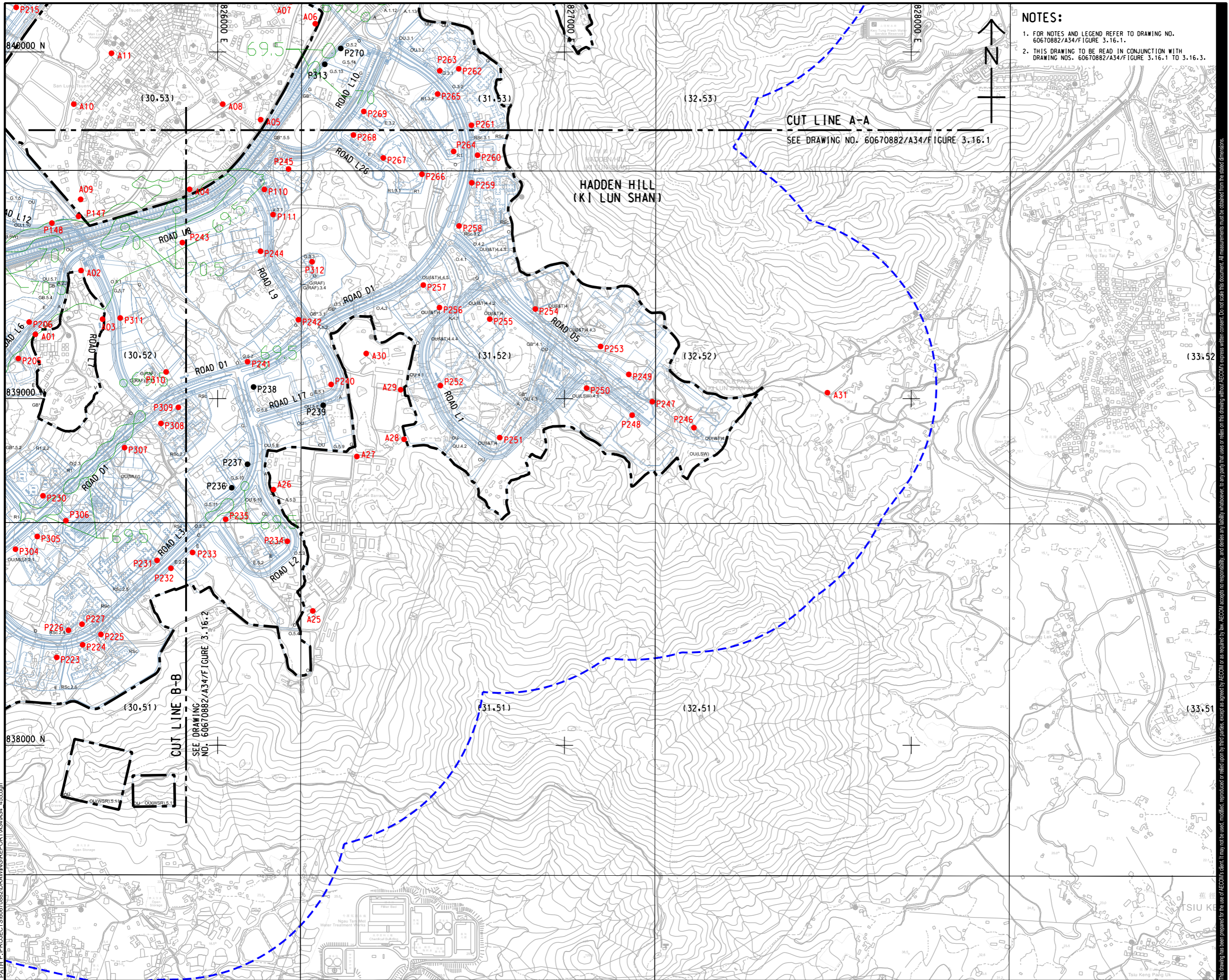
**PROJECT NO.**      **AGREEMENT NO.**  
 項目編號      協議編號  
 60670882      CE 20/2021

**SHEET TITLE**  
 圖紙名稱  
**CONTOUR OF PREDICTED 10TH HIGHEST CUMULATIVE DAILY RSP CONCENTRATION AT 1.5 mAG (ug/m3) (YEAR 2039)**      SHEET 2 OF 3

**SHEET NUMBER**  
 圖紙編號  
 60670882/A34/FIGURE 3.16.2

This drawing has been prepared for the use of AECOM's client. It may not be used, modified, reproduced or relied upon by third parties, except as agreed by AECOM in writing. AECOM accepts no responsibility, and denies any liability whatsoever, to any party that assesses or relies on this drawing without AECOM's express written consent. Do not scale this document. All measurements must be obtained from the stated dimensions.

ISO A1 594mm x 841mm  
 Approved:  
 Checked:  
 Designer:  
 Project Management Initials:  
 Plot File by: Yuxuan, He 11/30/2023  
 PATH P:\PROJECTS\60670882\DRAWING\REPORT\A3\A34\_455.dgn  
 This drawing has been prepared for the use of AECOM's client. It may not be used, modified, reproduced or relied upon by third parties, except as agreed by AECOM in writing. AECOM accepts no responsibility, and denies any liability whatsoever, for any party that assesses or relies on this drawing without AECOM's express written consent. All measurements must be obtained from the stated dimensions.



**NOTES:**

- FOR NOTES AND LEGEND REFER TO DRAWING NO. 60670882/A34/FIGURE 3.16.1.
- THIS DRAWING TO BE READ IN CONJUNCTION WITH DRAWING NOS. 60670882/A34/FIGURE 3.16.1 TO 3.16.3.

**CUT LINE A-A**  
SEE DRAWING NO. 60670882/A34/FIGURE 3.16.1

**CUT LINE B-B**  
SEE DRAWING NO. 60670882/A34/FIGURE 3.16.2

**AECOM**

**PROJECT**  
 項目  
**FIRST PHASE DEVELOPMENT OF THE NEW TERRITORIES NORTH – SAN TIN / LOK MA CHAU DEVELOPMENT NODE – INVESTIGATION**

**CLIENT**  
 業主  
 **土木工程拓展署**  
 Civil Engineering and Development Department  
 **規劃署**  
 Planning Department

**CONSULTANT**  
 顧問公司  
 AECOM Asla Company Ltd.  
 www.aecom.com

**SUB-CONSULTANTS**  
 分判工程師/公司

**ISSUE/REVISION**  
 修訂

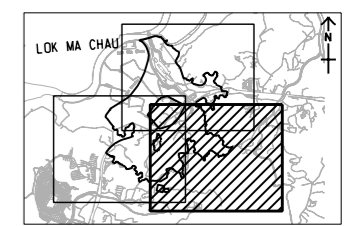
NO.	DATE	DESCRIPTION	CHK.

**STATUS**  
 階段

**SCALE**  
 比例  
 A3 1:10000

**DIMENSION UNIT**  
 尺寸單位  
 METRES

**KEY PLAN** A3 1:20000  
 索引圖



**PROJECT NO.**  
 項目編號  
 60670882

**AGREEMENT NO.**  
 協議編號  
 CE 20/2021

**SHEET TITLE**  
 圖紙名稱  
**CONTOUR OF PREDICTED 10TH HIGHEST CUMULATIVE DAILY RSP CONCENTRATION AT 1.5 mAG (ug/m3) (YEAR 2039)** SHEET 3 OF 3

**SHEET NUMBER**  
 圖紙編號  
 60670882/A34/FIGURE 3.16.3