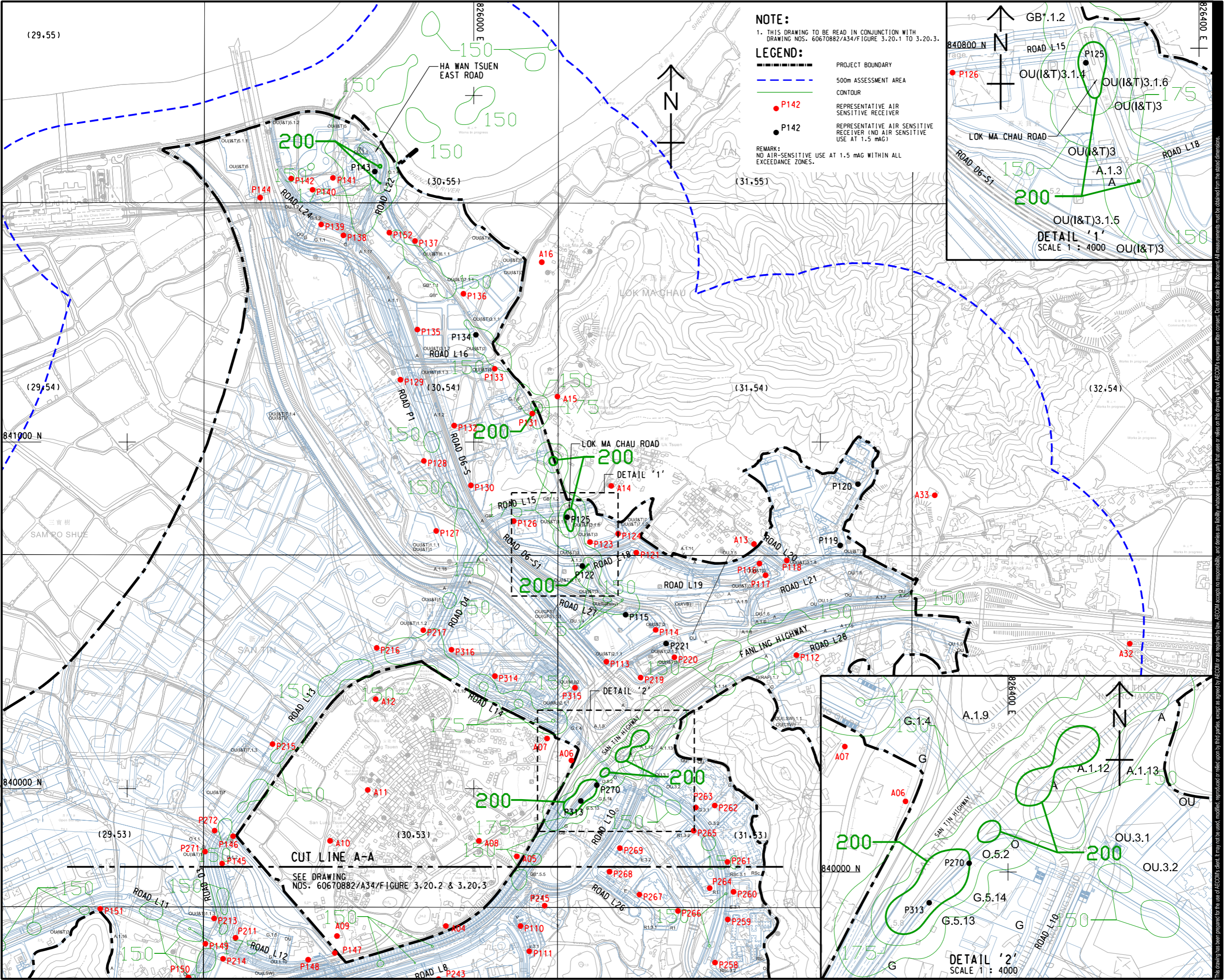


ISO A1 594mm x 841mm
 Approved:
 Checked:
 Designer:
 Project Management Initials:
 Plot File by: YangJ8
 PATH: P:\PROJECTS\60670882\DRAWING\REPORT\A34\A34_465.dgn
 14/2024

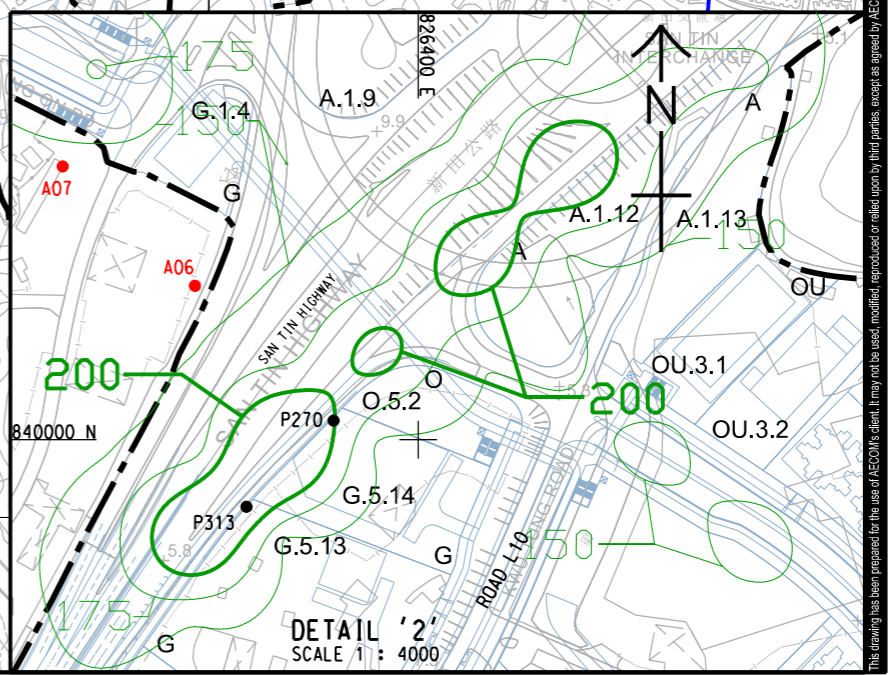
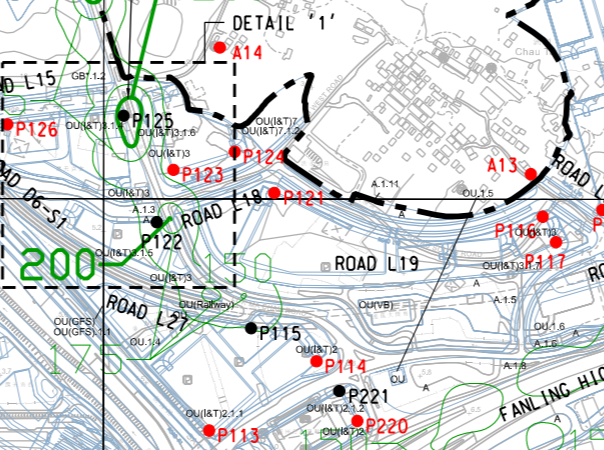
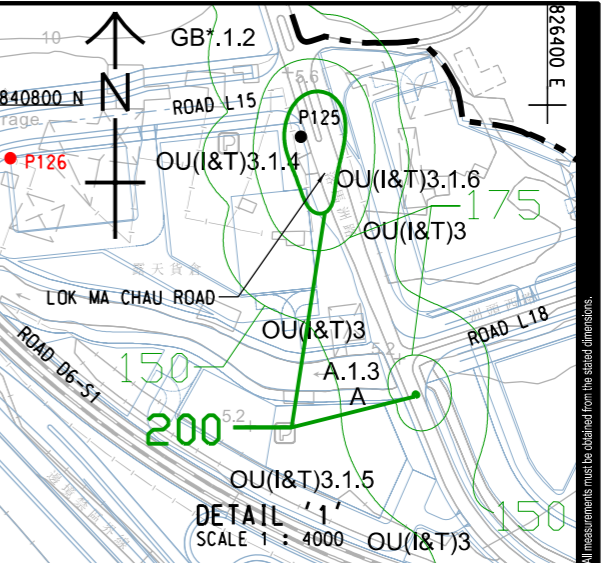


NOTE:
 1. THIS DRAWING TO BE READ IN CONJUNCTION WITH DRAWING NOS. 60670882/A34/F/FIGURE 3.20.1 TO 3.20.3.

LEGEND:

- PROJECT BOUNDARY
- 500m ASSESSMENT AREA
- CONTOUR
- P142 REPRESENTATIVE AIR SENSITIVE RECEIVER
- P142 REPRESENTATIVE AIR SENSITIVE RECEIVER (NO AIR SENSITIVE USE AT 1.5 mAg)

REMARK:
 NO AIR-SENSITIVE USE AT 1.5 mAg WITHIN ALL EXCEEDANCE ZONES.



AECOM

PROJECT
 項目
 FIRST PHASE DEVELOPMENT OF THE NEW TERRITORIES NORTH – SAN TIN / LOK MA CHAU DEVELOPMENT NODE – INVESTIGATION

CLIENT
 業主
 土木工程拓展署
 Civil Engineering and Development Department
 規劃署
 Planning Department

CONSULTANT
 顧問公司
 AECOM Asia Company Ltd.
 www.aecom.com

SUB-CONSULTANTS
 分判工程師/顧問公司

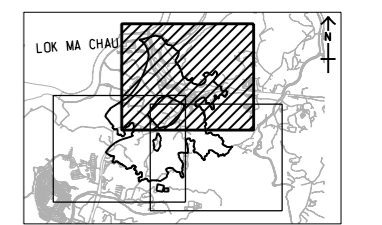
ISSUE/REVISION
 修訂

IR	DATE	DESCRIPTION	CHK.

STATUS
 階段

SCALE
 比例
 A3 1:10000

DIMENSION UNIT
 尺寸單位
 METRES



PROJECT NO.
 項目編號
 60670882

AGREEMENT NO.
 協議編號
 CE 20/2021

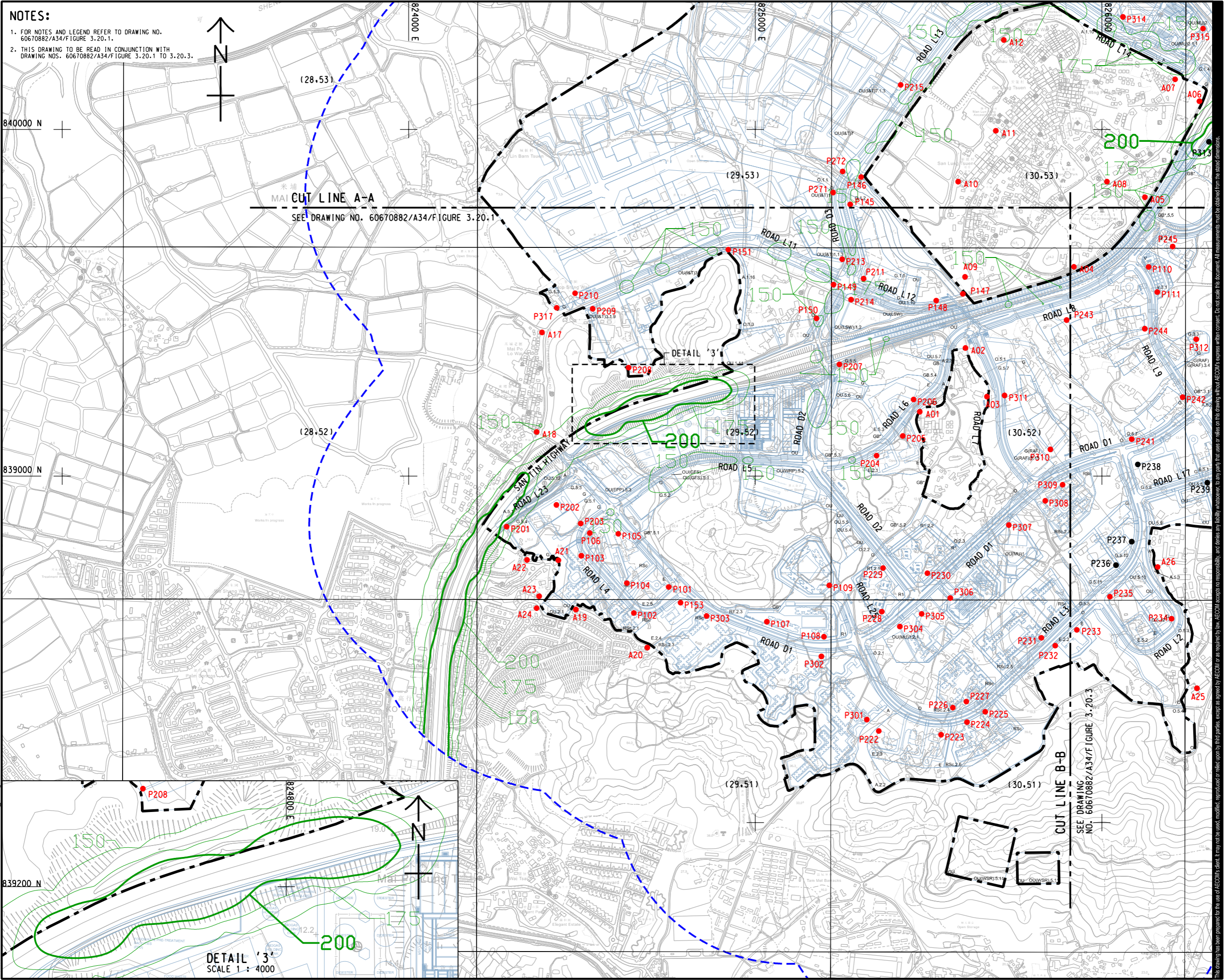
SHEET TITLE
 圖紙名稱
 CONTOUR OF PREDICTED 19TH HIGHEST CUMULATIVE HOURLY NO2 CONCENTRATION AT 1.5 mAg (ug/m3) (YEAR 2039) SHEET 1 OF 3

SHEET NUMBER
 圖紙編號
 60670882/A34/FIGURE 3.20.1

This drawing has been prepared for the use of AECOM's client. It may not be used, modified, reproduced or relied upon by third parties, except as agreed by AECOM or as required by law. AECOM accepts no responsibility, and disclaims any liability whatsoever, for any part, that users or reliance on this drawing without AECOM's express written consent. All measurements must be obtained from the stated dimensions.

ISO A1 594mm x 841mm
Approved:
Checked:
Designer:
Project Management Initials:
Photo File by: YauFB
PATH: P:\PROJECTS\60670882\DRAWINGREPORT\A34\A34_468.dgn
22/12/2023

NOTES:
1. FOR NOTES AND LEGEND REFER TO DRAWING NO. 60670882/A34/FIGURE 3.20.1.
2. THIS DRAWING TO BE READ IN CONJUNCTION WITH DRAWING NOS. 60670882/A34/FIGURE 3.20.1 TO 3.20.3.



PROJECT
FIRST PHASE DEVELOPMENT OF THE NEW TERRITORIES NORTH – SAN TIN / LOK MA CHAU DEVELOPMENT NODE – INVESTIGATION

CLIENT
土木工務拓展署
Civil Engineering and Development Department
規劃署
Planning Department

CONSULTANT
AECOM Asia Company Ltd.
www.aecom.com

SUB-CONSULTANTS

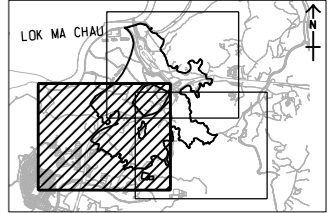
ISSUE/REVISION

IR	DATE	DESCRIPTION	CHK.

STATUS

SCALE
A3 1:10000
DIMENSION UNIT
METRES

KEY PLAN A3 1:200000



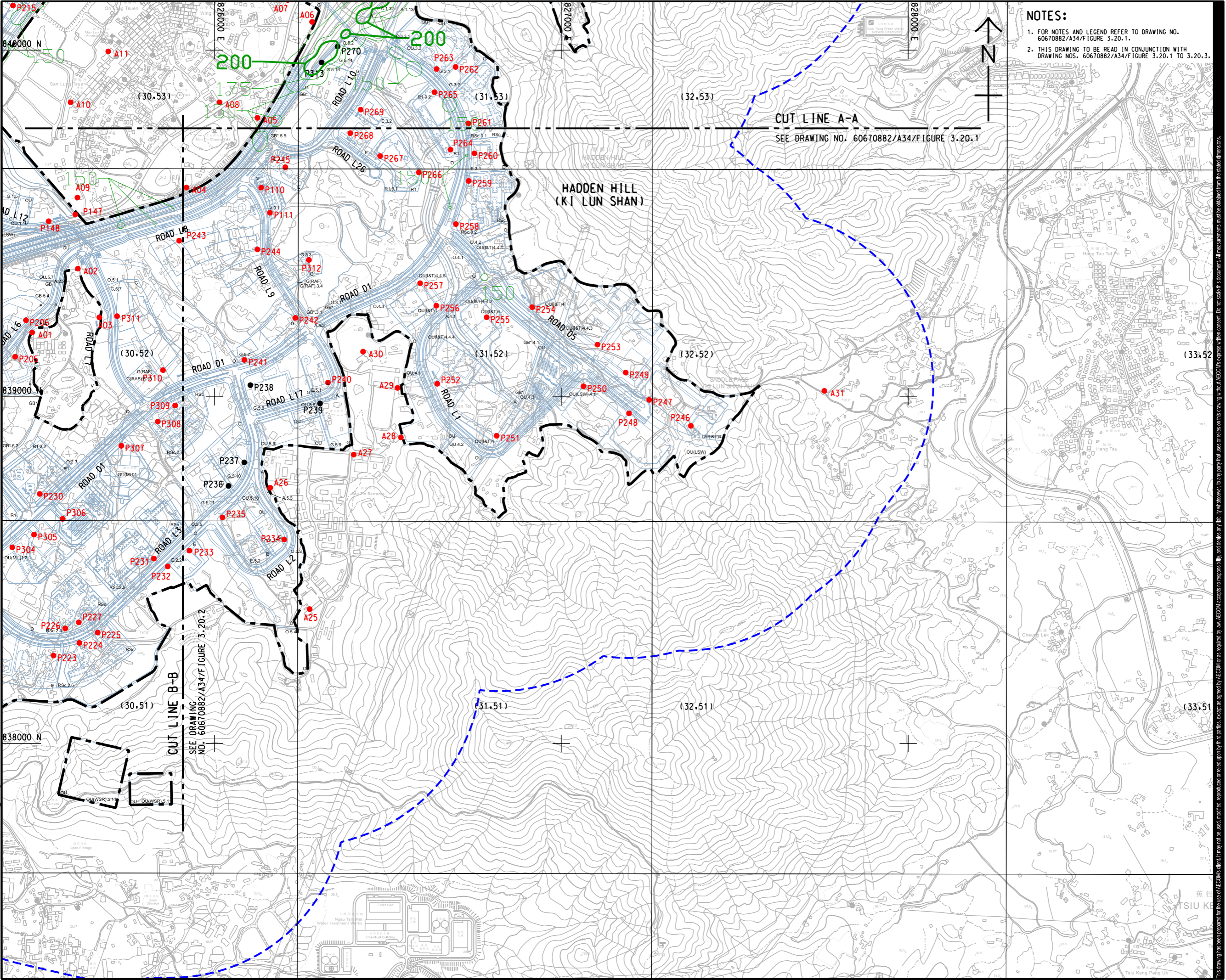
PROJECT NO. 60670882
AGREEMENT NO. CE 20/2021

SHEET TITLE
CONTOUR OF PREDICTED 19TH HIGHEST CUMULATIVE HOURLY NO2 CONCENTRATION AT 1.5 mAG (ug/m3) (YEAR 2039) SHEET 2 OF 3

SHEET NUMBER
60670882/A34/FIGURE 3.20.2

This drawing has been prepared for the use of AECOM's client. It may not be used, modified, reproduced or relied upon by third parties, except as agreed by AECOM or as required by law. AECOM accepts no responsibility, and disclaims any liability, whatsoever, for any gain, loss or damage on this drawing without AECOM's express written consent. All measurements must be obtained from the stated dimensions.

ISO A1 594mm x 841mm
 Approved:
 Checked:
 Designer:
 Project Management Initials:
 Plot File by: Yuxuan, He 11/30/2023
 PATH P:\PROJECTS\60670882\DRAWING\REPORT\A34\A34_467.dgn
 This drawing has been prepared for the use of AECOM's client. It may not be used, modified, reproduced or relied upon by third parties, except as agreed by AECOM or as required by law. AECOM accepts no responsibility, and denies any liability whatsoever, for any party that assesses or relies on this drawing without AECOM's express written consent. All measurements must be obtained from the stated dimensions.



NOTES:

- FOR NOTES AND LEGEND REFER TO DRAWING NO. 60670882/A34/FIGURE 3.20.1.
- THIS DRAWING TO BE READ IN CONJUNCTION WITH DRAWING NOS. 60670882/A34/FIGURE 3.20.1 TO 3.20.3.

CUT LINE A-A
SEE DRAWING NO. 60670882/A34/FIGURE 3.20.1

CUT LINE B-B
SEE DRAWING NO. 60670882/A34/FIGURE 3.20.2

AECOM

PROJECT
 項目
FIRST PHASE DEVELOPMENT OF THE NEW TERRITORIES NORTH – SAN TIN / LOK MA CHAU DEVELOPMENT NODE – INVESTIGATION

CLIENT
 業主
 **土木工程拓展署**
 Civil Engineering and Development Department
 **規劃署**
 Planning Department

CONSULTANT
 顧問公司
 AECOM Asla Company Ltd.
 www.aecom.com

SUB-CONSULTANTS
 分判工程師/公司

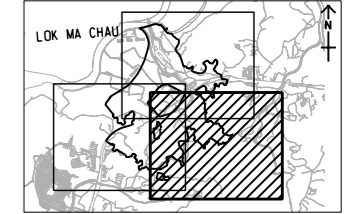
ISSUE/REVISION
 修訂

NO.	DATE	DESCRIPTION	CHK.

STATUS
 階段

SCALE
 比例
 A3 1:10000

DIMENSION UNIT
 尺寸單位
 METRES



PROJECT NO.
 項目編號
 60670882

AGREEMENT NO.
 協議編號
 CE 20/2021

SHEET TITLE
 圖紙名稱
CONTOUR OF PREDICTED 19TH HIGHEST CUMULATIVE HOURLY NO2 CONCENTRATION AT 1.5 mAG (ug/m3) (YEAR 2039) SHEET 3 OF 3

SHEET NUMBER
 圖紙編號
 60670882/A34/FIGURE 3.20.3