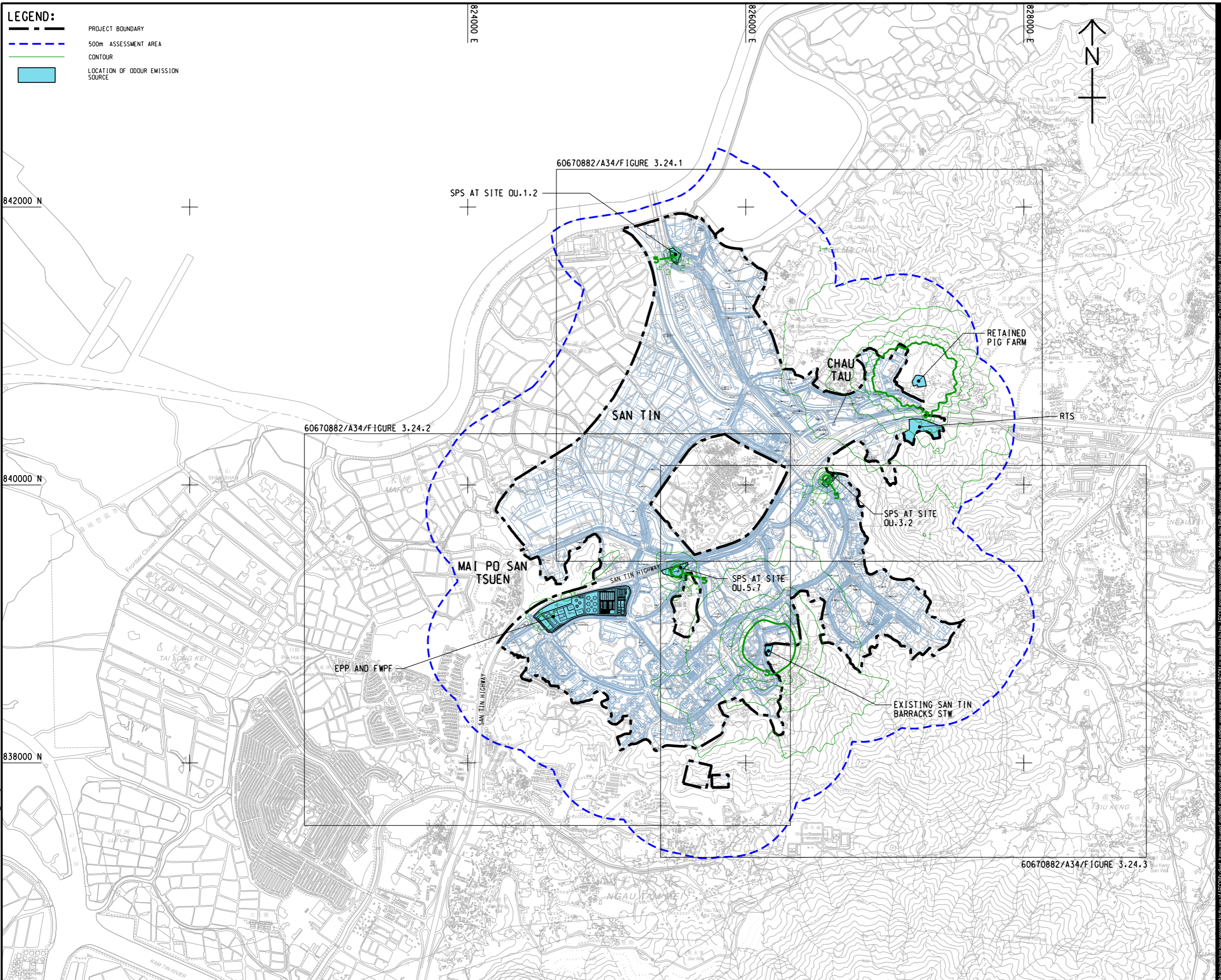


ISO A1 594mm x 841mm
 Approved:
 Checked:
 Designer:
 Project Management Initials:
 2023/12/21
 PATH P:\PROJECTS\60670882\DRAWING\REPORT\A34\A34_501.dgn



LEGEND:

- PROJECT BOUNDARY
- 500m ASSESSMENT AREA
- CONTOUR
- LOCATION OF ODOUR EMISSION SOURCE



PROJECT
 項目
 FIRST PHASE DEVELOPMENT OF THE NEW TERRITORIES NORTH – SAN TIN / LOK MA CHAU DEVELOPMENT NODE – INVESTIGATION

CLIENT
 業主
 土木工程拓展署
 Civil Engineering and Development Department
 規劃署
 Planning Department

CONSULTANT
 顧問公司
 AECOM Asia Company Ltd.
 www.aecom.com

SUB-CONSULTANTS
 分判工程師/顧問公司

ISSUE/REVISION
 修訂

I/R	DATE	DESCRIPTION	CHK.
修訂	日期	內容摘要	核對

STATUS
 階段

SCALE
 比例
 A3 1 : 25000

DIMENSION UNIT
 尺寸單位
 METRES

KEY PLAN
 索引圖

PROJECT NO.
 項目編號
 60670882

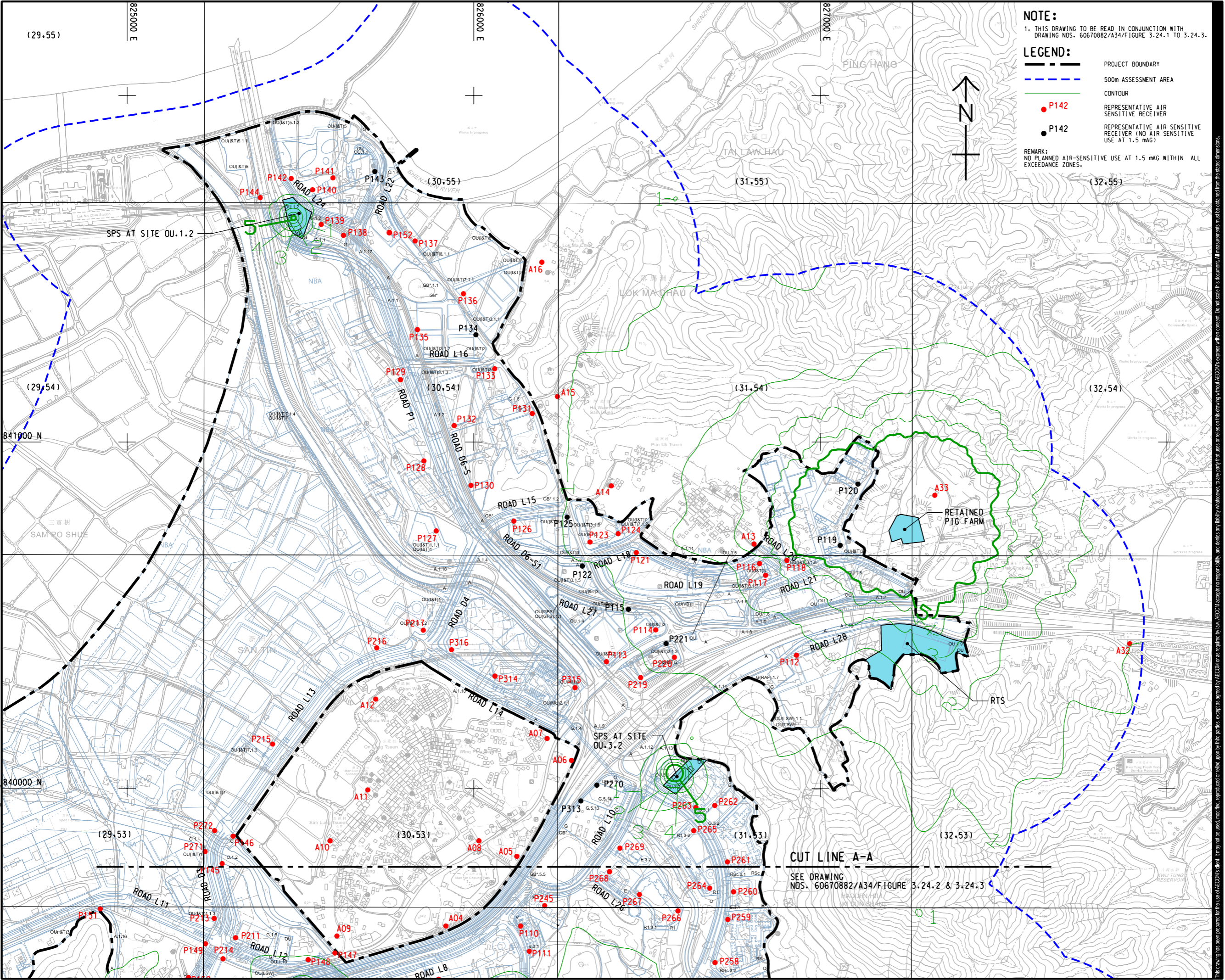
AGREEMENT NO.
 協議編號
 CE 20/2021

SHEET TITLE
 圖紙名稱
 CONTOUR OF PREDICTED 5-SECOND AVERAGE ODOUR CONCENTRATION AT 1.5 mA_G (OU/m³) (KEY PLAN)

SHEET NUMBER
 圖紙編號
 60670882/A34/FIGURE 3.24

This drawing has been prepared for the use of AECOM's client. It may not be used, modified, reproduced or relied upon by third parties, except as agreed by AECOM or as required by law. AECOM accepts no responsibility, and disclaims any liability whatsoever, for any part, that less or more than this drawing, without AECOM's express written consent. Do not scale this document. All measurements must be obtained from the stated dimensions.

ISO A1 594mm x 841mm
Approved:
Checked:
Designer:
Project Management Initials:



NOTE:
1. THIS DRAWING TO BE READ IN CONJUNCTION WITH DRAWING NOS. 60670882/A34/F FIGURE 3.24.1 TO 3.24.3.

LEGEND:

- PROJECT BOUNDARY
- 500m ASSESSMENT AREA
- CONTOUR
- P142 REPRESENTATIVE AIR SENSITIVE RECEIVER
- P142 REPRESENTATIVE AIR SENSITIVE RECEIVER (NO AIR SENSITIVE USE AT 1.5 mAg)

REMARK:
NO PLANNED AIR-SENSITIVE USE AT 1.5 mAg WITHIN ALL EXCEEDANCE ZONES.

AECOM

PROJECT
項目
FIRST PHASE DEVELOPMENT OF THE NEW TERRITORIES NORTH – SAN TIN / LOK MA CHAU DEVELOPMENT NODE – INVESTIGATION

CLIENT
業主
CEDD 土木工程拓展署
Civil Engineering and Development Department
規劃署
Planning Department

CONSULTANT
顧問公司
AECOM Asia Company Ltd.
www.aecom.com

SUB-CONSULTANTS
分判工程師/顧問公司

ISSUE/REVISION
修訂

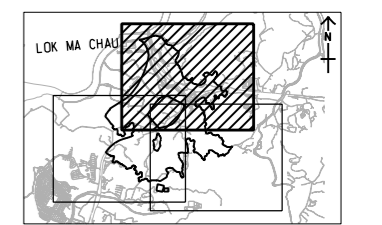
IR	DATE	DESCRIPTION	CHK.

STATUS
階段

SCALE
比例
A3 1:10000

DIMENSION UNIT
尺寸單位
METRES

KEY PLAN A3 1:20000
索引圖



PROJECT NO.
項目編號
60670882

AGREEMENT NO.
協議編號
CE 20/2021

SHEET TITLE
圖則名稱
CONTOUR OF PREDICTED 5-SECOND AVERAGE ODOUR CONCENTRATION AT 1.5 mAg (OU/m3)

SHEET 1 OF 3

SHEET NUMBER
圖則編號
60670882/A34/FIGURE 3.24.1

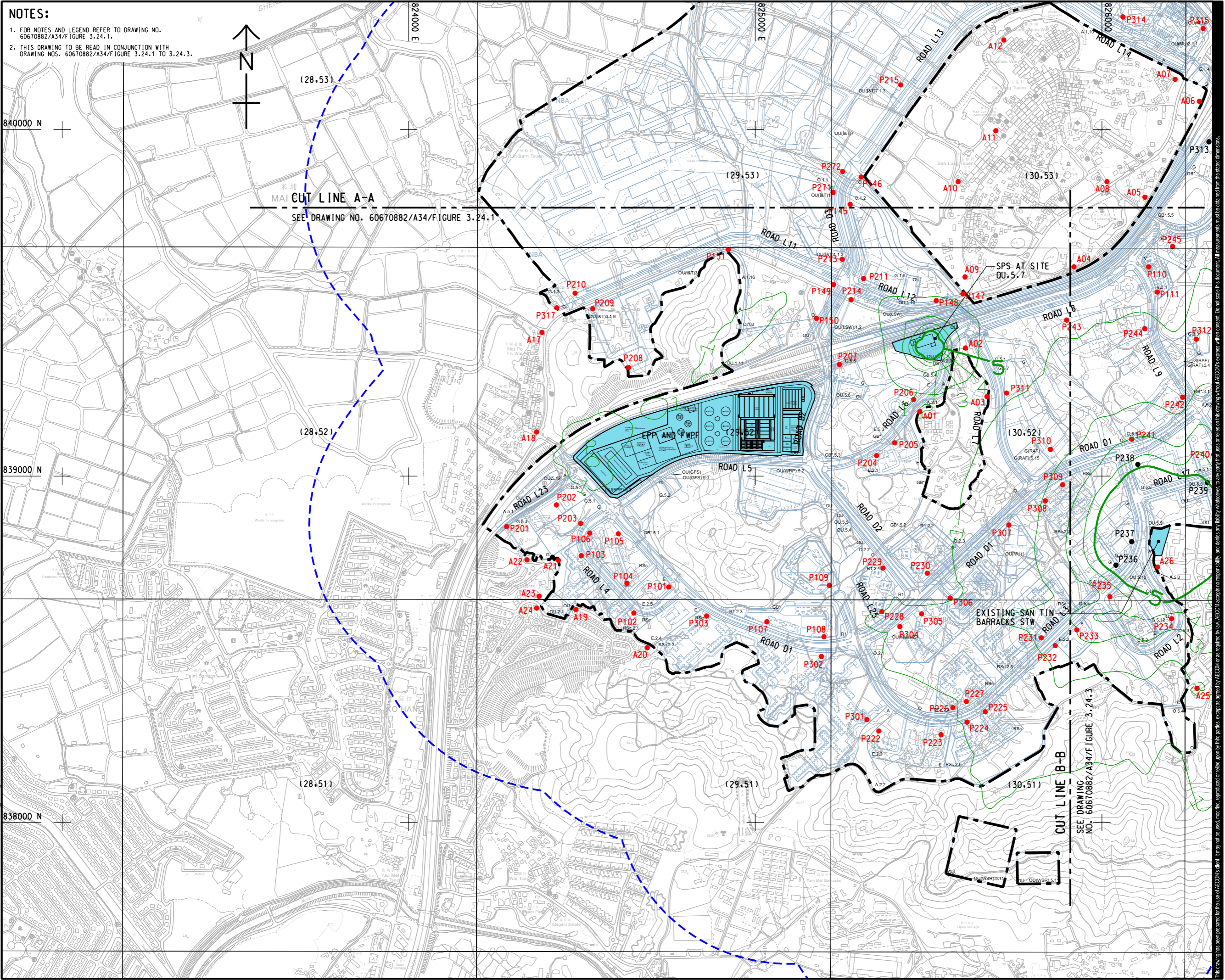
Plot File by: YangJ8 14/2024
PATH: P:\PROJECTS\60670882\DRAWING\REPORT\A34\A34_502.dgn

This drawing has been prepared for the use of AECOM's client. It may not be used, modified, reproduced or relied upon by third parties, except as agreed by AECOM or as required by law. AECOM accepts no responsibility, and disclaims any liability, whatsoever, for any part, that uses or relies on this drawing without AECOM's express written consent. All measurements must be obtained from the stated dimensions.

ISO A1 594mm x 841mm
 Approved:
 Checked:
 Designer:
 Project Management Initials:
 2023/12/21
 PATH P-PROJECTS/60670882/DRAWINGREPORT/A34/A34_503.dgn
 Plot File by: LIO

NOTES:

- FOR NOTES AND LEGEND REFER TO DRAWING NO. 60670882/A34/FIGURE 3.24.1.
- THIS DRAWING TO BE READ IN CONJUNCTION WITH DRAWING NOS. 60670882/A34/FIGURE 3.24.1 TO 3.24.3.



PROJECT
 項目
FIRST PHASE DEVELOPMENT OF THE NEW TERRITORIES NORTH – SAN TIN / LOK MA CHAU DEVELOPMENT NODE – INVESTIGATION

CLIENT
 業主
 **土木工程拓展署**
 Civil Engineering and Development Department
 **規劃署**
 Planning Department

CONSULTANT
 顧問公司
 AECOM Asia Company Ltd.
 www.aecom.com

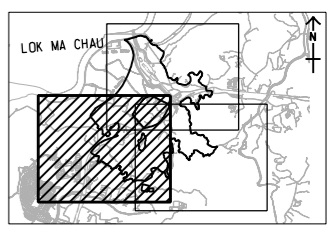
SUB-CONSULTANTS
 分判工程師/顧問公司

ISSUE/REVISION
 修訂

IR	DATE	DESCRIPTION	CHK.

STATUS
 階段

SCALE
 比例
 A3 1:10000
DIMENSION UNIT
 尺寸單位
 METRES
KEY PLAN A3 1:20000
 索引圖



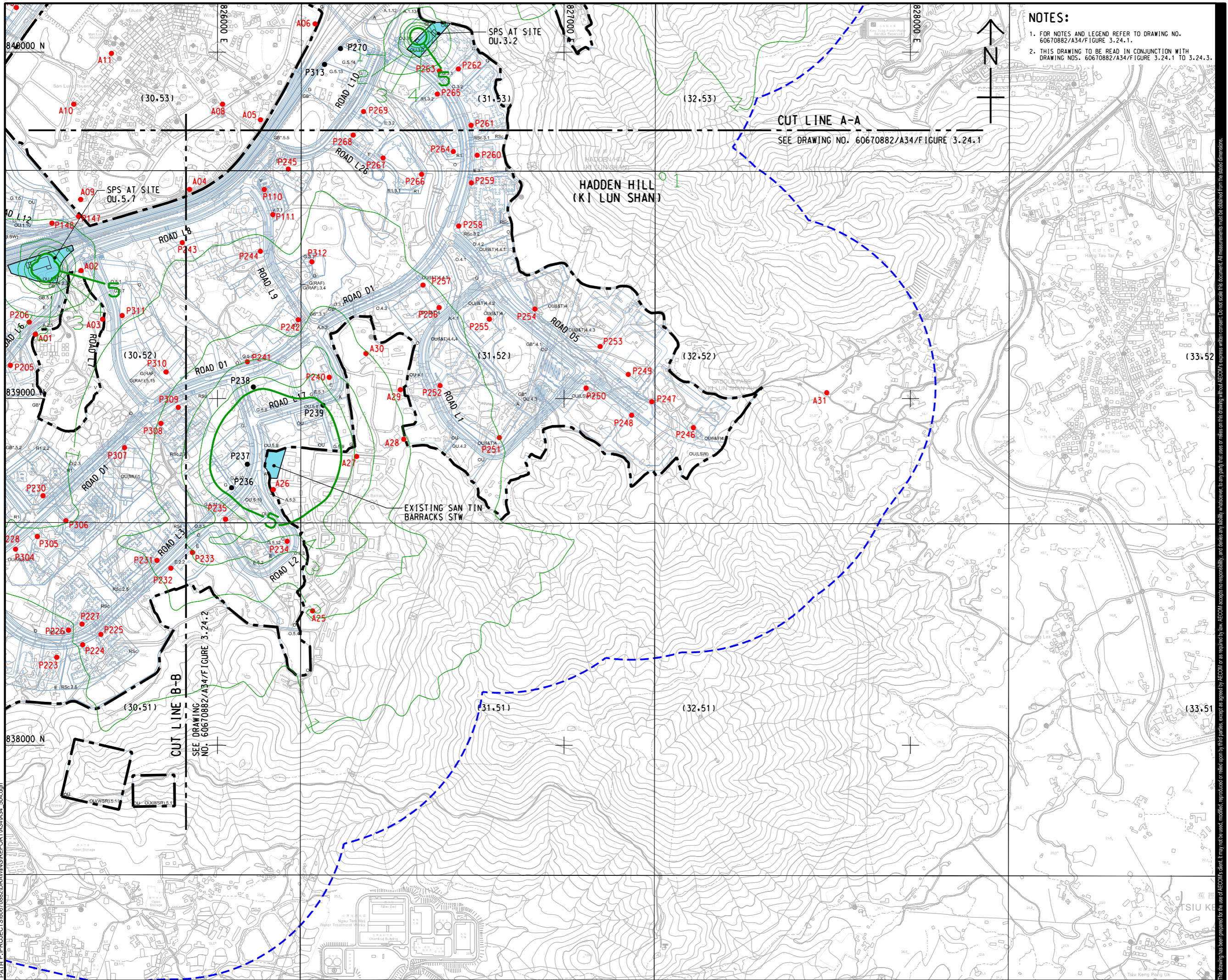
PROJECT NO.
 項目編號
 60670882
AGREEMENT NO.
 協議編號
 CE 20/2021

SHEET TITLE
 圖則名稱
CONTOUR OF PREDICTED 5-SECOND AVERAGE ODOUR CONCENTRATION AT 1.5 mAG (OU/m3)
 SHEET 2 OF 3

SHEET NUMBER
 圖則編號
 60670882/A34/FIGURE 3.24.2

This drawing has been prepared for the use of AECOM's client. It may not be used, modified, reproduced or relied upon by third parties, except as agreed by AECOM in writing. AECOM accepts no responsibility, and disclaims any liability, whatsoever, for any part, that, in whole or in part, is not based on this drawing without AECOM's express written consent. All measurements must be obtained from the stated dimensions.

ISO A1 594mm x 841mm
 Approved: _____
 Checked: _____
 Designer: _____
 Project Management Initials: _____
 2023/12/21
 PATH PROJECTS\60670882\DRAWING\REPORT\A34\A34_504.dgn
 Plot File by: LIO



NOTES:

- FOR NOTES AND LEGEND REFER TO DRAWING NO. 60670882/A34/FIGURE 3.24.1.
- THIS DRAWING TO BE READ IN CONJUNCTION WITH DRAWING NOS. 60670882/A34/FIGURE 3.24.1 TO 3.24.3.

AECOM

PROJECT
 項目
FIRST PHASE DEVELOPMENT OF THE NEW TERRITORIES NORTH – SAN TIN / LOK MA CHAU DEVELOPMENT NODE – INVESTIGATION

CLIENT
 業主
 **土木工程拓展署**
 Civil Engineering and Development Department
 **規劃署**
 Planning Department

CONSULTANT
 工程顧問公司
 AECOM Asia Company Ltd.
 www.aecom.com

SUB-CONSULTANTS
 分判工程顧問公司

ISSUE/REVISION
 修訂

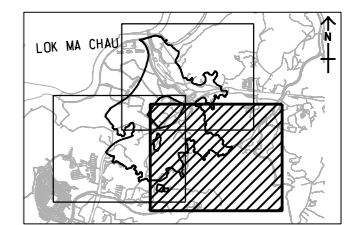
IR	DATE	DESCRIPTION	CHK.

STATUS
 階段

SCALE
 比例
 A3 1:10000

DIMENSION UNIT
 尺寸單位
 METRES

KEY PLAN A3 1:20000
 索引圖



PROJECT NO.
 項目編號
 60670882

AGREEMENT NO.
 協議編號
 CE 20/2021

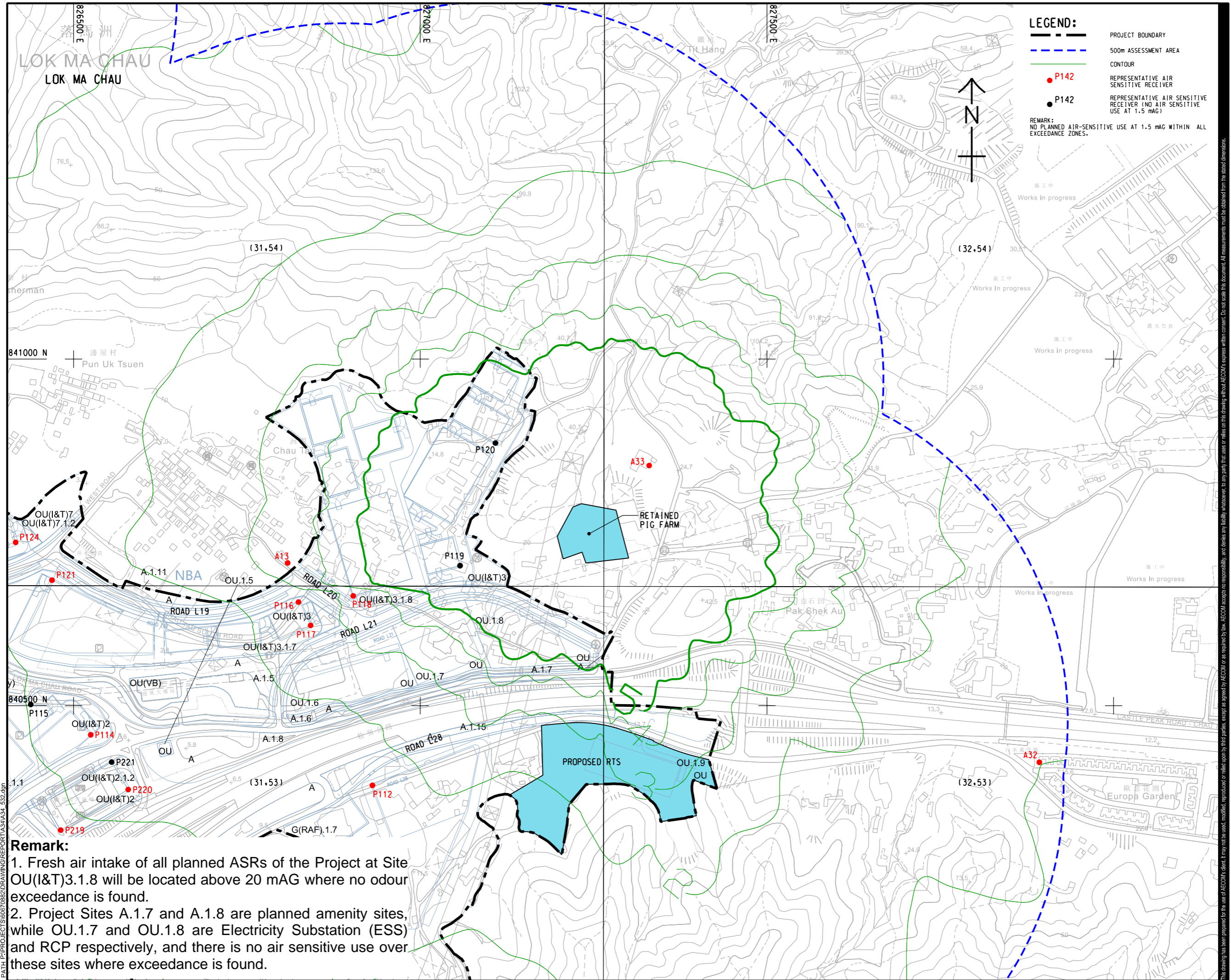
SHEET TITLE
 圖紙名稱
CONTOUR OF PREDICTED 5-SECOND AVERAGE ODOUR CONCENTRATION AT 1.5 mAg (OU/m3)

SHEET 3 OF 3

SHEET NUMBER
 圖紙編號
 60670882/A34/FIGURE 3.24.3

This drawing has been prepared for the use of AECOM's client. It may not be used, modified, reproduced or relied upon by third parties, except as agreed by AECOM or as required by law. AECOM accepts no responsibility, and denies any liability, whatsoever, for any part, that, in or on this drawing, without AECOM's express written consent. All measurements must be obtained from the stated dimensions.

ISO A1 594mm x 841mm
 Approved:
 Checked:
 Designer:
 Project Management Initials:



LEGEND:

- PROJECT BOUNDARY
- 500m ASSESSMENT AREA
- CONTOUR
- REPRESENTATIVE AIR SENSITIVE RECEIVER (P142)
- REPRESENTATIVE AIR SENSITIVE RECEIVER (NO AIR SENSITIVE USE AT 1.5 mAG)

REMARK:
 NO PLANNED AIR-SENSITIVE USE AT 1.5 mAG WITHIN ALL EXCEEDANCE ZONES.

AECOM

PROJECT
 FIRST PHASE DEVELOPMENT OF THE NEW TERRITORIES NORTH – SAN TIN / LOK MA CHAU DEVELOPMENT NODE – INVESTIGATION

CLIENT
 土木工程拓展署
 Civil Engineering and Development Department
 規劃署
 Planning Department

CONSULTANT
 AECOM Asia Company Ltd.
 www.aecom.com

SUB-CONSULTANTS

ISSUE/REVISION

NO.	DATE	DESCRIPTION	CHK.

STATUS

SCALE
 A3 1 : 5000

DIMENSION UNIT
 METRES

KEY PLAN

PROJECT NO.
 60670882

AGREEMENT NO.
 CE 20/2021

SHEET TITLE
 CONTOUR OF PREDICTED 5-SECOND AVERAGE ODOUR CONCENTRATION AT 1.5 mAG (OU/m3)

SHEET NUMBER
 60670882/A34/FIGURE 3.24.4

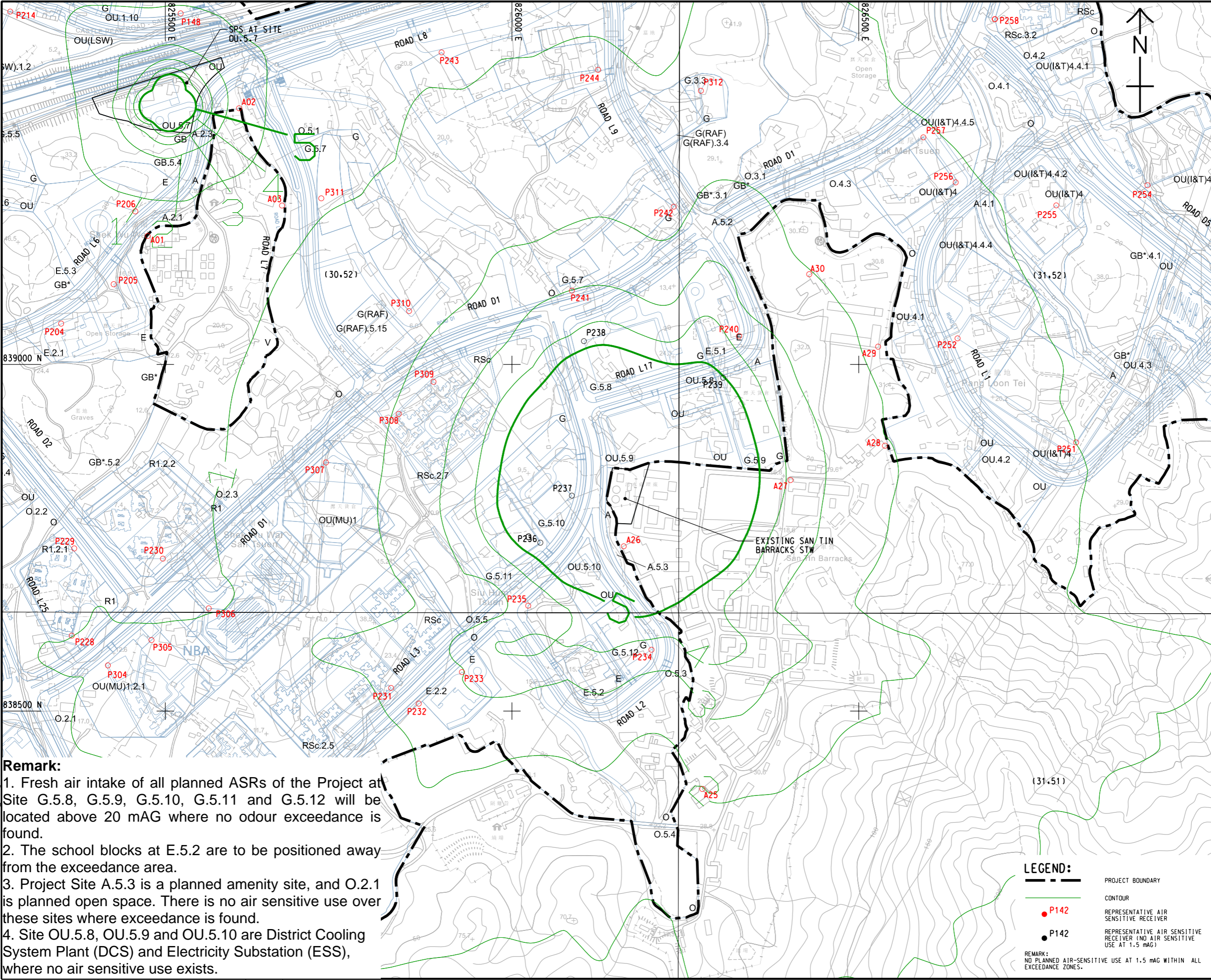
Remark:

1. Fresh air intake of all planned ASRs of the Project at Site OU(I&T)3.1.8 will be located above 20 mAG where no odour exceedance is found.
2. Project Sites A.1.7 and A.1.8 are planned amenity sites, while OU.1.7 and OU.1.8 are Electricity Substation (ESS) and RCP respectively, and there is no air sensitive use over these sites where exceedance is found.

Plot File by: YangJ8
 PATH: P:\PROJECTS\60670882\DRAWING\REPORT\A34\A34_532.dgn
 14/2024

This drawing has been prepared for the use of AECOM's client. It may not be used, modified, reproduced or relied upon by third parties, except as agreed by AECOM in writing. AECOM accepts no responsibility, and disclaims any liability, whatsoever, for any part, that is less or more than this drawing, without AECOM's express written consent. All measurements must be obtained from the stated dimensions.

ISO A1 594mm x 841mm
 Approved:
 Checked:
 Designer:
 Project Management Initials:
 File No: YangJ8 14/2024
 PATH: P:\PROJECTS\60670882\DRAWING\REPORT\A34\A34_533.dwg
 This drawing has been prepared for the use of AECOM's client. It may not be used, modified, reproduced or relied upon by third parties, except as agreed by AECOM in writing. AECOM accepts no responsibility, and disclaims any liability whatsoever, for any part, that is used or relied on in this drawing without AECOM's express written consent. All measurements must be obtained from the stated dimensions.



Remark:

1. Fresh air intake of all planned ASRs of the Project at Site G.5.8, G.5.9, G.5.10, G.5.11 and G.5.12 will be located above 20 mAG where no odour exceedance is found.
2. The school blocks at E.5.2 are to be positioned away from the exceedance area.
3. Project Site A.5.3 is a planned amenity site, and O.2.1 is planned open space. There is no air sensitive use over these sites where exceedance is found.
4. Site OU.5.8, OU.5.9 and OU.5.10 are District Cooling System Plant (DCS) and Electricity Substation (ESS), where no air sensitive use exists.

LEGEND:

- PROJECT BOUNDARY
- CONTOUR
- P142 REPRESENTATIVE AIR SENSITIVE RECEIVER
- P142 REPRESENTATIVE AIR SENSITIVE RECEIVER (NO AIR SENSITIVE USE AT 1.5 mAG)

REMARK:
NO PLANNED AIR-SENSITIVE USE AT 1.5 mAG WITHIN ALL EXCEEDANCE ZONES.

AECOM

PROJECT
 項目
 FIRST PHASE DEVELOPMENT OF THE NEW TERRITORIES NORTH – SAN TIN / LOK MA CHAU DEVELOPMENT NODE – INVESTIGATION

CLIENT
 業主
 CEDD 土木工程拓展署
 Civil Engineering and Development Department
 規劃署
 Planning Department

CONSULTANT
 顧問公司
 AECOM Asia Company Ltd.
 www.aecom.com

SUB-CONSULTANTS
 分判工程師/顧問公司

ISSUE/REVISION

IR	DATE	DESCRIPTION	CHK.

STATUS
 階段

SCALE
 比例
 A3 1:5000

DIMENSION UNIT
 尺寸單位
 METRES

KEY PLAN
 索引圖

PROJECT NO.
 項目編號
 60670882

AGREEMENT NO.
 協議編號
 CE 20/2021

SHEET TITLE
 圖紙名稱
 CONTOUR OF PREDICTED 5-SECOND AVERAGE ODOUR CONCENTRATION AT 1.5 mAG (OU/m3)

SHEET NUMBER
 圖紙編號
 60670882/A34/FIGURE 3.24.5