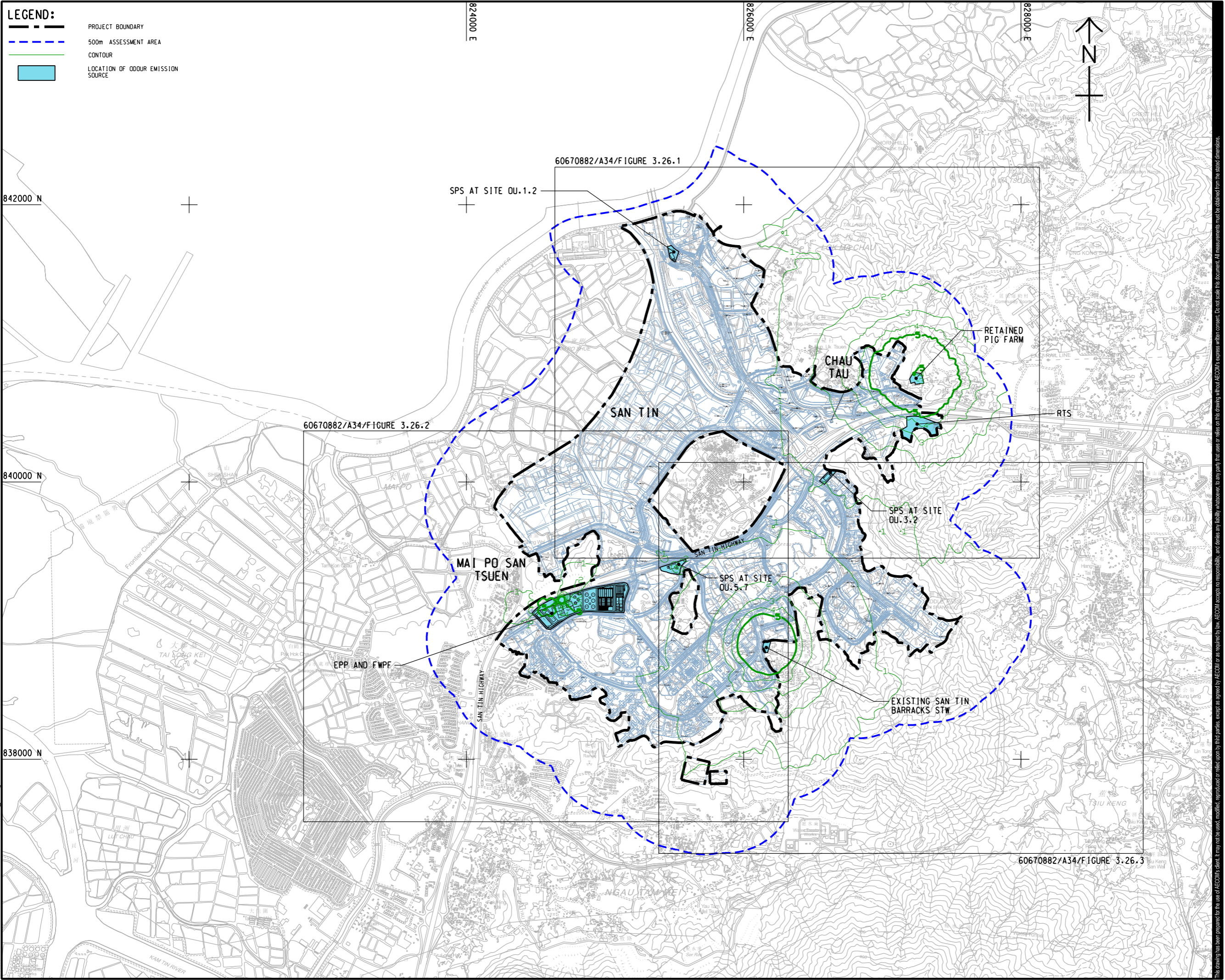


ISO A1 594mm x 841mm
 Approved:
 Checked:
 Designer:
 Project Management Initials:
 2023/12/20
 PATH PROJECTS/60670882/DRAWING/REPORT/A34/A34_506.dwg



LEGEND:

- PROJECT BOUNDARY
- 500m ASSESSMENT AREA
- CONTOUR
- LOCATION OF ODOUR EMISSION SOURCE



PROJECT
 項目
 FIRST PHASE DEVELOPMENT OF THE NEW TERRITORIES NORTH – SAN TIN / LOK MA CHAU DEVELOPMENT NODE – INVESTIGATION

CLIENT
 業主
 土木工程拓展署
 Civil Engineering and Development Department
 規劃署
 Planning Department

CONSULTANT
 土庫顧問公司
 AECOM Asia Company Ltd.
 www.aecom.com

SUB-CONSULTANTS
 分判工程師/顧問公司

ISSUE/REVISION
 修訂

I/R	DATE	DESCRIPTION	CHK.
修訂	日期	內容摘要	核對

STATUS
 階段

SCALE
 比例
 A3 1 : 25000

DIMENSION UNIT
 尺寸單位
 METRES

KEY PLAN
 索引圖

PROJECT NO.
 項目編號
 60670882

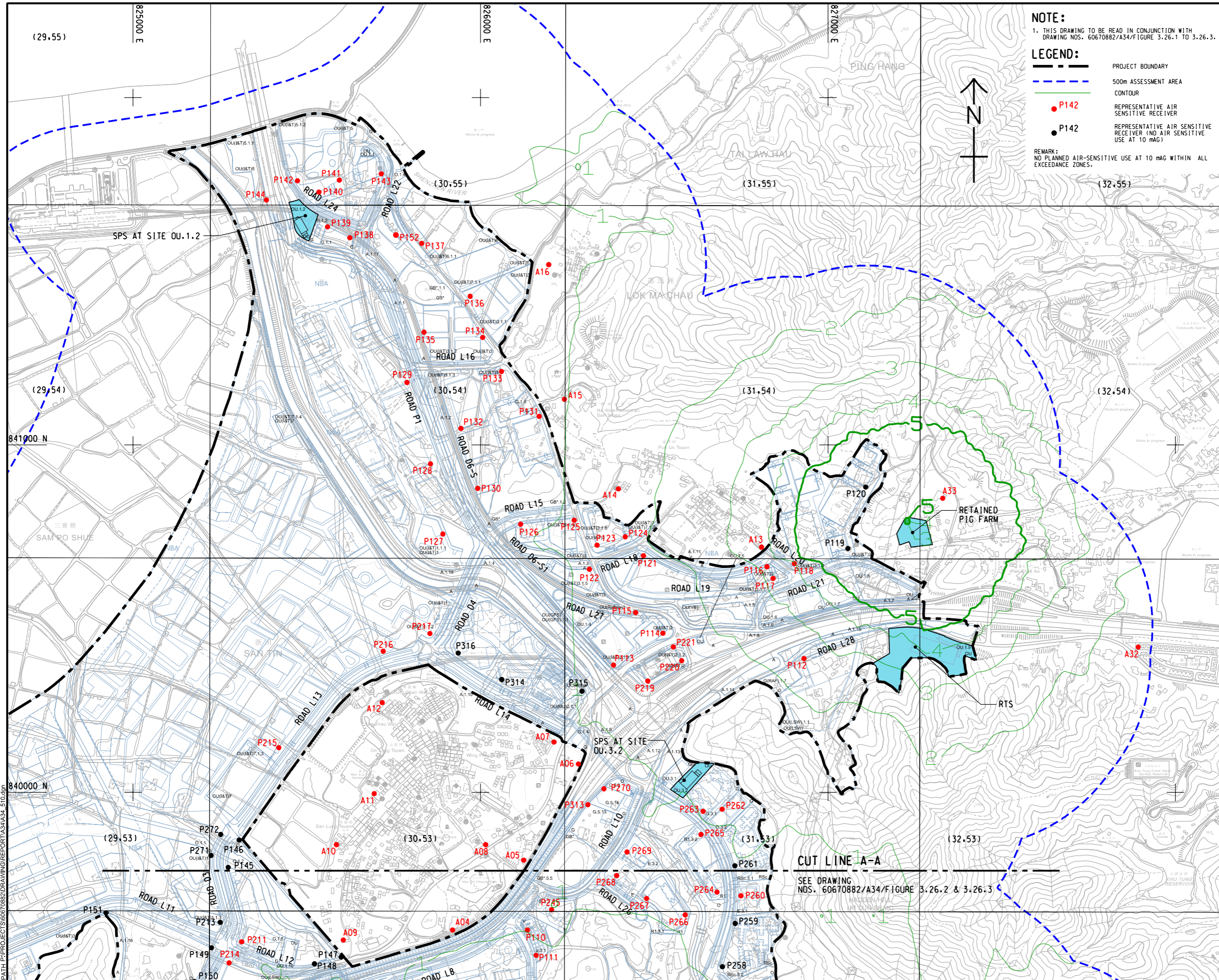
AGREEMENT NO.
 協議編號
 CE 20/2021

SHEET TITLE
 圖紙名稱
 CONTOUR OF PREDICTED 5-SECOND AVERAGE ODOUR CONCENTRATION AT 10 mAG (OU/m3) (KEY PLAN)

SHEET NUMBER
 圖紙編號
 60670882/A34/FIGURE 3.26

This drawing has been prepared for the use of AECOM's client. It may not be used, modified, reproduced or relied upon by third parties, except as agreed by AECOM or as required by law. AECOM accepts no responsibility, and disclaims any liability, whatsoever, for any part, that uses or relies on this drawing without AECOM's express written consent. All measurements must be obtained from the stated dimensions.

ISO A1 594mm x 841mm
Approved:
Checked:
Designer:
Project Management Initials:



NOTE:
1. THIS DRAWING TO BE READ IN CONJUNCTION WITH DRAWING NOS. 60670882/A34/F FIGURE 3.26.1 TO 3.26.3.

LEGEND:

- PROJECT BOUNDARY
- 500m ASSESSMENT AREA CONTOUR
- P142 REPRESENTATIVE AIR SENSITIVE RECEIVER
- P142 REPRESENTATIVE AIR SENSITIVE RECEIVER (NO AIR SENSITIVE USE AT 10 mAG)

REMARK:
NO PLANNED AIR-SENSITIVE USE AT 10 mAG WITHIN ALL EXCEEDANCE ZONES.

AECOM

PROJECT
FIRST PHASE DEVELOPMENT OF THE NEW TERRITORIES NORTH – SAN TIN / LOK MA CHAU DEVELOPMENT NODE – INVESTIGATION

CLIENT
 土木工程拓展署
Civil Engineering and Development Department
 規劃署
Planning Department

CONSULTANT
 AECOM Asia Company Ltd.
www.aecom.com

SUB-CONSULTANTS

ISSUE/REVISION

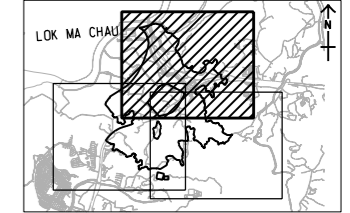
NO.	DATE	DESCRIPTION	CHK.

STATUS

SCALE
A3 1:10000

DIMENSION UNIT
METRES

KEY PLAN A3 1:200000



PROJECT NO.
60670882

AGREEMENT NO.
CE 20/2021

SHEET TITLE
CONTOUR OF PREDICTED 5-SECOND AVERAGE ODOUR CONCENTRATION AT 10 mAG (OU/m3)

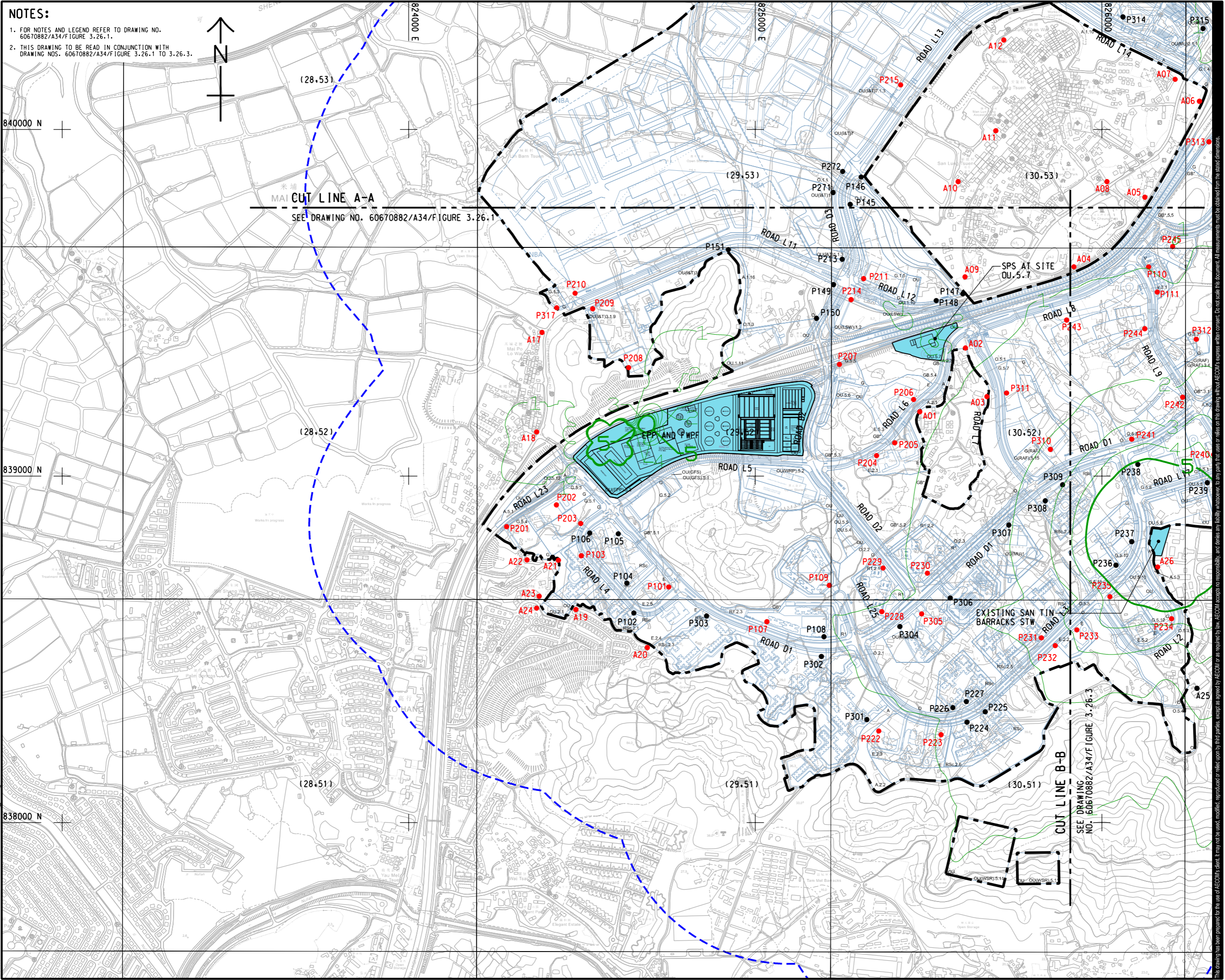
SHEET 1 OF 3

SHEET NUMBER
60670882/A34/FIGURE 3.26.1

Plot File by: YangJ8
14/2024
PATH: P:\PROJECTS\60670882\DRAWING\REPORT\A34\A34_510.dwg

This drawing has been prepared for the use of AECOM's client. It may not be used, modified, reproduced or relied upon by third parties, except as agreed by AECOM or as required by law. AECOM accepts no responsibility, and disclaims any liability, whatsoever, for any part, that uses or relies on this drawing without AECOM's express written consent. All measurements must be obtained from the stated dimensions.

ISO A1 594mm x 841mm
Approved:
Checked:
Designer:
Project Management Initials:
2023/12/20
P:\PROJECTS\60670882\DRAWING\REPORT\A3\A34_511.dgn
Plot File by: LIO



NOTES:
 1. FOR NOTES AND LEGEND REFER TO DRAWING NO. 60670882/A34/FIGURE 3.26.1.
 2. THIS DRAWING TO BE READ IN CONJUNCTION WITH DRAWING NOS. 60670882/A34/FIGURE 3.26.1 TO 3.26.3.



CUT LINE A-A
 SEE DRAWING NO. 60670882/A34/FIGURE 3.26.1

CUT LINE B-B
 SEE DRAWING NO. 60670882/A34/FIGURE 3.26.3



PROJECT
 項目
FIRST PHASE DEVELOPMENT OF THE NEW TERRITORIES NORTH – SAN TIN / LOK MA CHAU DEVELOPMENT NODE – INVESTIGATION

CLIENT
 業主
 **土木工程拓展署**
 Civil Engineering and Development Department
 **規劃署**
 Planning Department

CONSULTANT
 顧問公司
 AECOM Asia Company Ltd.
 www.aecom.com

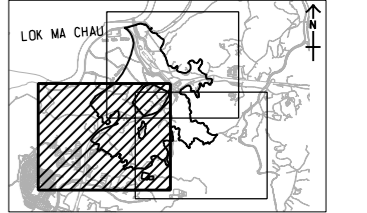
SUB-CONSULTANTS
 分判工程師/顧問公司

ISSUE/REVISION
 修訂

IR	DATE	DESCRIPTION	CHK.

STATUS
 階段

SCALE
 比例
 A3 1:10000
DIMENSION UNIT
 尺寸單位
 METRES



PROJECT NO.
 項目編號
 60670882

AGREEMENT NO.
 協議編號
 CE 20/2021

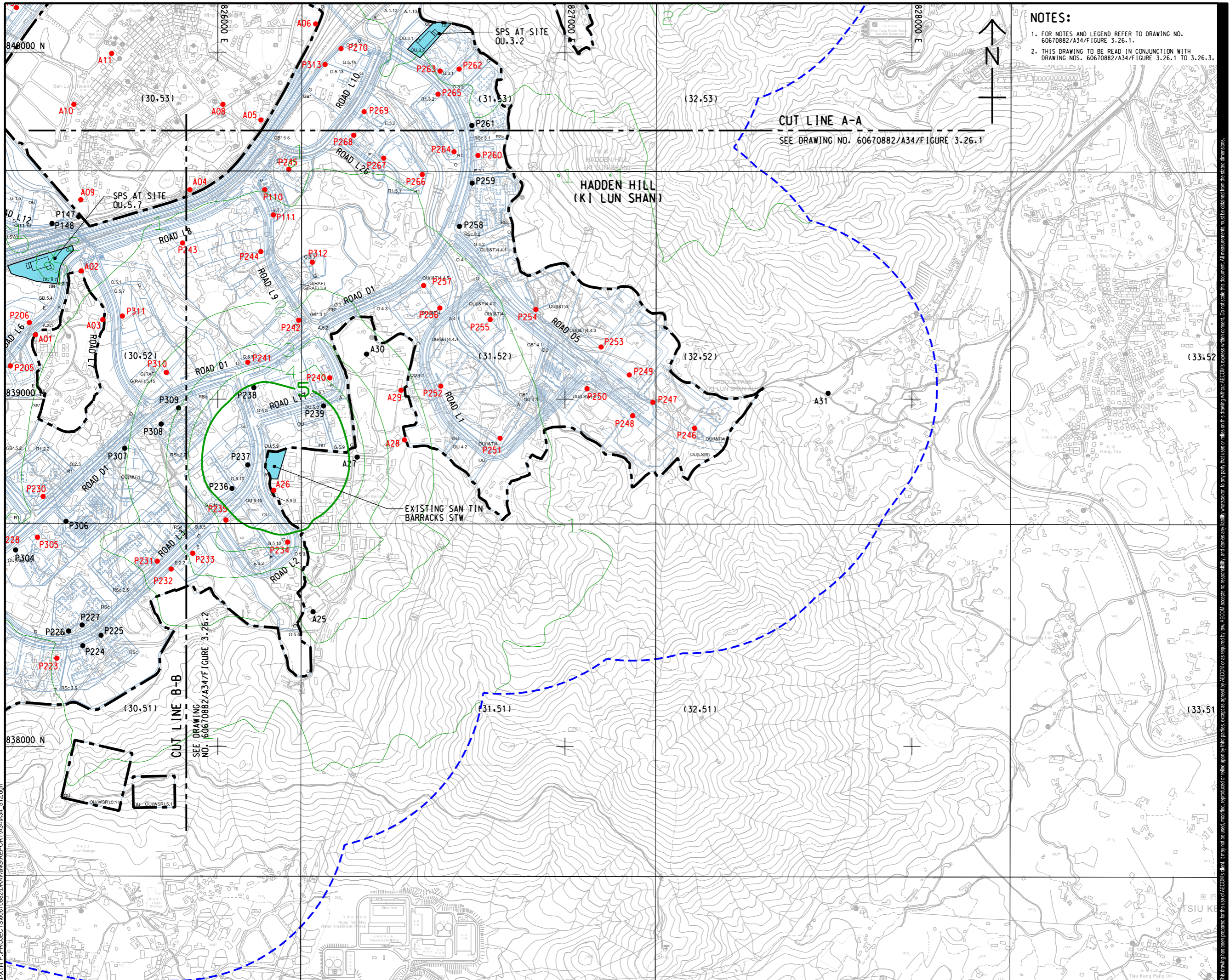
SHEET TITLE
 圖紙名稱
CONTOUR OF PREDICTED 5-SECOND AVERAGE ODOUR CONCENTRATION AT 10 mAG (OU/m3)

SHEET 2 OF 3

SHEET NUMBER
 圖紙編號
 60670882/A34/FIGURE 3.26.2

This drawing has been prepared for the use of AECOM's client. It may not be used, modified, reproduced or relied upon by third parties, except as agreed by AECOM or as required by law. AECOM accepts no responsibility, and disclaims any liability, whatsoever, for any loss, that arises or may arise from this drawing without AECOM's express written consent. All measurements must be obtained from the stated dimensions.

ISO A1 594mm x 841mm
 Approved: _____
 Checked: _____
 Designer: _____
 Project Management Initials: _____
 2023/12/21
 PATH PROJECTS/60670882/DRAWINGREPORT/A3/A34_512.dwg
 Plot File by: LIO



NOTES:

- FOR NOTES AND LEGEND REFER TO DRAWING NO. 60670882/A34/FIGURE 3.26.1.
- THIS DRAWING TO BE READ IN CONJUNCTION WITH DRAWING NOS. 60670882/A34/FIGURE 3.26.1 TO 3.26.3.

AECOM

PROJECT
 項目
FIRST PHASE DEVELOPMENT OF THE NEW TERRITORIES NORTH – SAN TIN / LOK MA CHAU DEVELOPMENT NODE – INVESTIGATION

CLIENT
 業主
 **土木工程拓展署**
 Civil Engineering and Development Department
 **規劃署**
 Planning Department

CONSULTANT
 工程顧問公司
 AECOM Asia Company Ltd.
 www.aecom.com

SUB-CONSULTANTS
 分判工程師/顧問公司

ISSUE/REVISION
 修訂

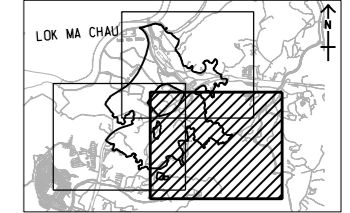
IR	DATE	DESCRIPTION	CHK.

STATUS
 階段

SCALE
 比例
 A3 1:10000

DIMENSION UNIT
 尺寸單位
 METRES

KEY PLAN A3 1:20000
 索引圖



PROJECT NO.
 項目編號
 60670882

AGREEMENT NO.
 協議編號
 CE 20/2021

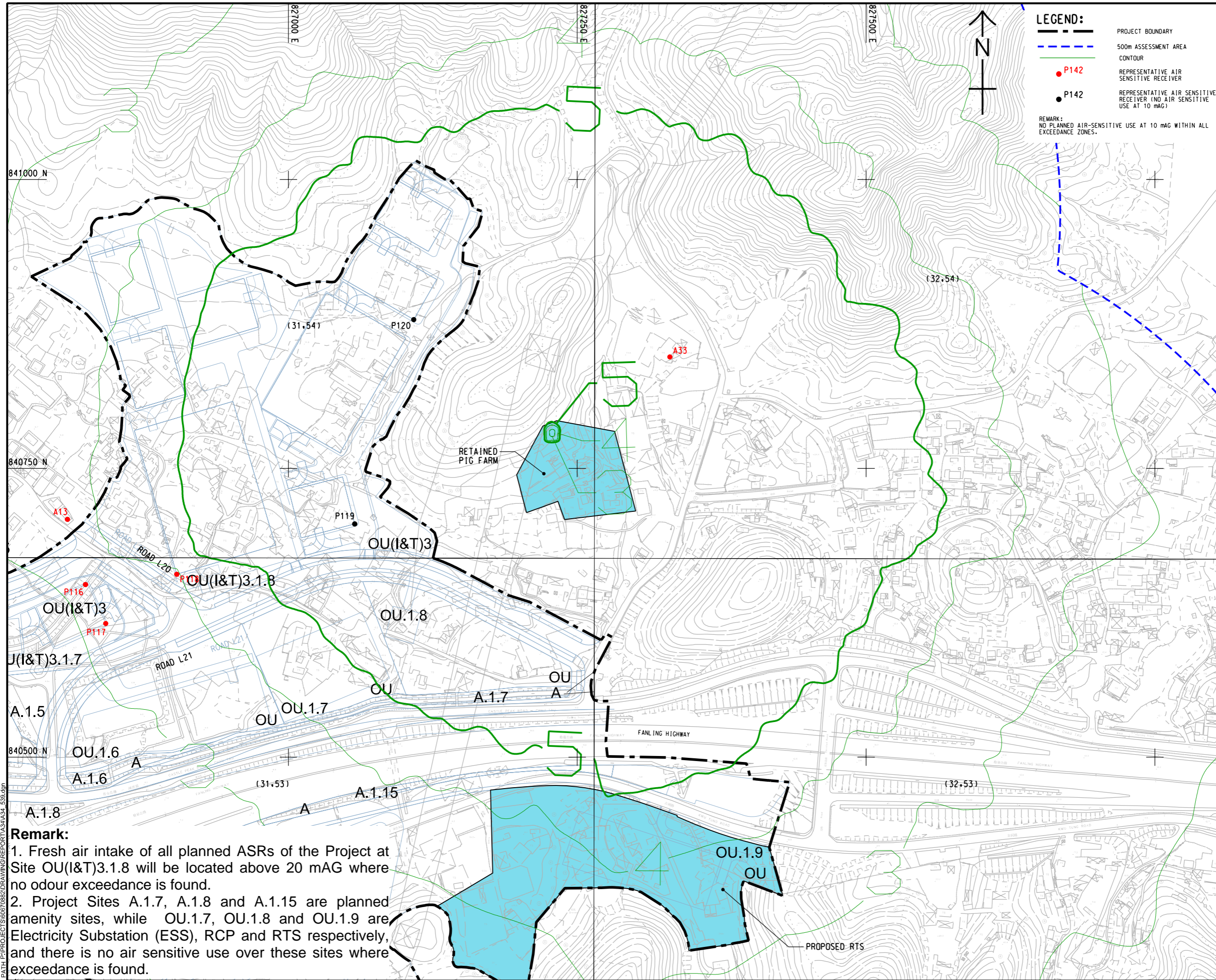
SHEET TITLE
 圖紙名稱
CONTOUR OF PREDICTED 5-SECOND AVERAGE ODOUR CONCENTRATION AT 10 mAG (OU/m3)

SHEET 3 OF 3

SHEET NUMBER
 圖紙編號
 60670882/A34/FIGURE 3.26.3

This drawing has been prepared for the use of AECOM's client. It may not be used, modified, reproduced or relied upon by third parties, except as agreed by AECOM or as required by law. AECOM accepts no responsibility, and disclaims any liability whatsoever, for any part, that uses or relies on this drawing without AECOM's express written consent. All measurements must be obtained from the stated dimensions.

ISO A1 594mm x 841mm
 Approved:
 Checked:
 Designer:
 Project Management Initials:



LEGEND:

- PROJECT BOUNDARY
- 500m ASSESSMENT AREA CONTOUR
- P142 REPRESENTATIVE AIR SENSITIVE RECEIVER
- P142 REPRESENTATIVE AIR SENSITIVE RECEIVER (NO AIR SENSITIVE USE AT 10 mAG)

REMARK:
 NO PLANNED AIR-SENSITIVE USE AT 10 mAG WITHIN ALL EXCEEDANCE ZONES.

AECOM

PROJECT
 項目
FIRST PHASE DEVELOPMENT OF THE NEW TERRITORIES NORTH – SAN TIN / LOK MA CHAU DEVELOPMENT NODE – INVESTIGATION

CLIENT
 業主

CEDD 土木工程拓展署
 Civil Engineering and Development Department

規劃署
 Planning Department

CONSULTANT
 土庫顧問公司

AECOM Asia Company Ltd.
 www.aecom.com

SUB-CONSULTANTS
 分判工程師有限公司

ISSUE/REVISION
 修訂

IR	DATE	DESCRIPTION	CHK.

STATUS
 階段

SCALE
 比例

A3 1 : 3000

DIMENSION UNIT
 尺寸單位

METRES

KEY PLAN
 索引圖

PROJECT NO.
 項目編號

60670882

AGREEMENT NO.
 協議編號

CE 20/2021

SHEET TITLE
 圖紙名稱

CONTOUR OF PREDICTED 5-SECOND AVERAGE ODOUR CONCENTRATION AT 10 mAG (OU/m3)

SHEET NUMBER
 圖紙編號

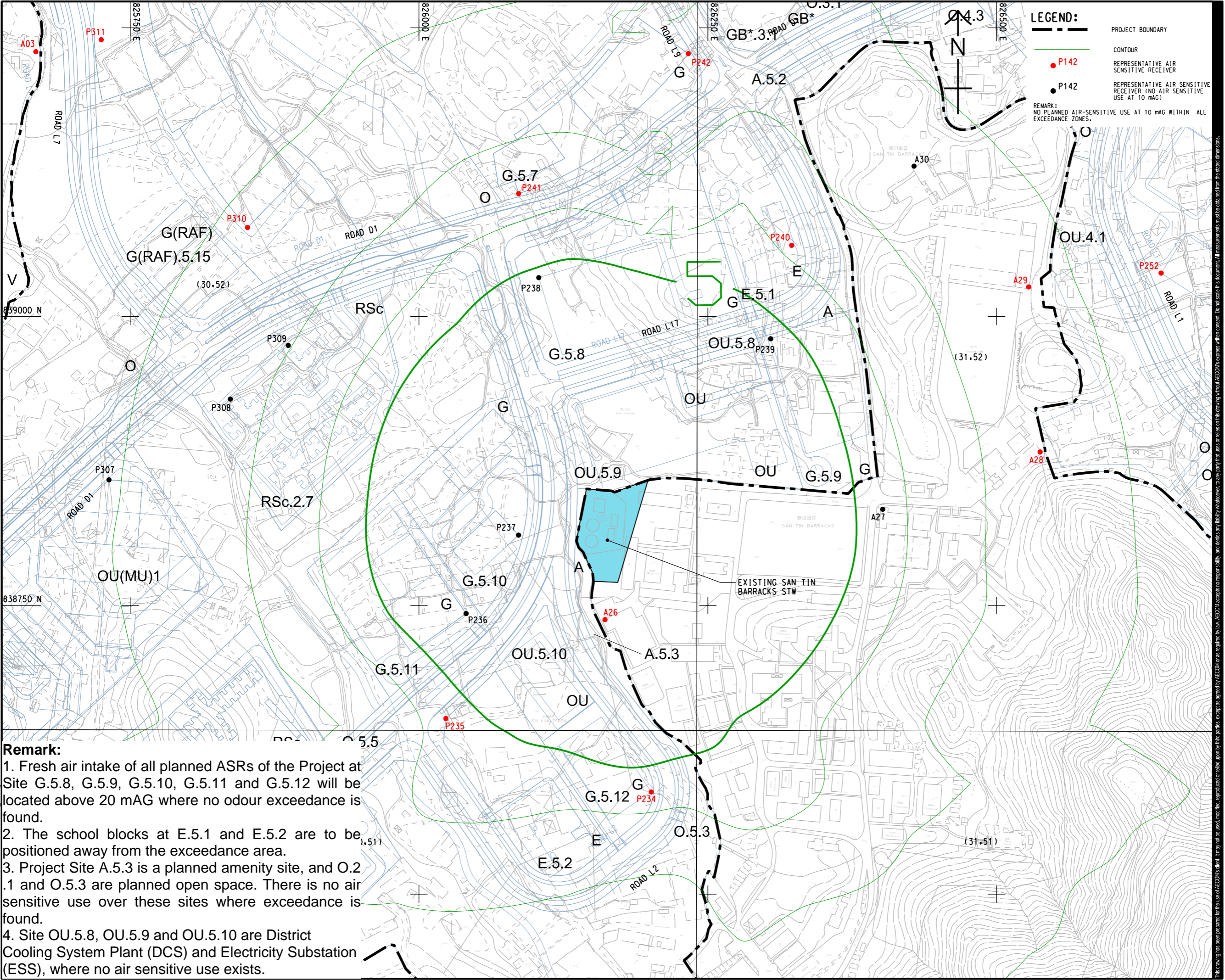
60670882/A34/FIGURE 3.26.4

Remark:

1. Fresh air intake of all planned ASRs of the Project at Site OU(I&T)3.1.8 will be located above 20 mAG where no odour exceedance is found.
2. Project Sites A.1.7, A.1.8 and A.1.15 are planned amenity sites, while OU.1.7, OU.1.8 and OU.1.9 are Electricity Substation (ESS), RCP and RTS respectively, and there is no air sensitive use over these sites where exceedance is found.

Plot File by: YangJ8 1/4/2024
 PATH: P:\PROJECTS\60670882\DRAWING\REPORT\A34\A34_539.dgn
 This drawing has been prepared for the use of AECOM's client. It may not be used, modified, reproduced or relied upon by third parties, except as agreed by AECOM or as required by law. AECOM accepts no responsibility, and disclaims any liability whatsoever, for any part, that uses or relies on this drawing without AECOM's express written consent. All measurements must be obtained from the stated dimensions.

ISO A1 594mm x 841mm
 Approved:
 Checked:
 Designer:
 Project Management Initials:
 14/2024
 P:\PROJECTS\60670882\DRAWING\REPORT\A34\A34_540.dgn
 This drawing has been prepared for the use of AECOM's client. It may not be used, modified, reproduced or relied upon by third parties, except as agreed by AECOM in writing. AECOM accepts no responsibility, and disclaims any liability, whatsoever, for any part, that is or may be used, modified, reproduced or relied upon by third parties, except as agreed by AECOM in writing. All measurements must be obtained from the stated dimensions.



LEGEND:

- PROJECT BOUNDARY
- CONTOUR
- P142 REPRESENTATIVE AIR SENSITIVE RECEIVER
- P142 REPRESENTATIVE AIR SENSITIVE RECEIVER (NO AIR SENSITIVE USE AT 10 mAG)

REMARK:
NO PLANNED AIR-SENSITIVE USE AT 10 mAG WITHIN ALL EXCEEDANCE ZONES.

AECOM

PROJECT
 項目
 FIRST PHASE DEVELOPMENT OF THE NEW TERRITORIES NORTH – SAN TIN / LOK MA CHAU DEVELOPMENT NODE – INVESTIGATION

CLIENT
 業主
 土木工程拓展署
 Civil Engineering and Development Department
 規劃署
 Planning Department

CONSULTANT
 土庫顧問公司
 AECOM Asia Company Ltd.
 www.aecom.com

SUB-CONSULTANTS
 分判工程師有限公司

ISSUE/REVISION
 修訂

IR	DATE	DESCRIPTION	CHK.

STATUS
 階段

SCALE
 比例
 A3 1 : 3000

DIMENSION UNIT
 尺寸單位
 METRES

KEY PLAN
 索引圖

Remark:

- Fresh air intake of all planned ASRs of the Project at Site G.5.8, G.5.9, G.5.10, G.5.11 and G.5.12 will be located above 20 mAG where no odour exceedance is found.
- The school blocks at E.5.1 and E.5.2 are to be positioned away from the exceedance area.
- Project Site A.5.3 is a planned amenity site, and O.2, .1 and O.5.3 are planned open space. There is no air sensitive use over these sites where exceedance is found.
- Site OU.5.8, OU.5.9 and OU.5.10 are District Cooling System Plant (DCS) and Electricity Substation (ESS), where no air sensitive use exists.

PROJECT NO.
 項目編號
 60670882

AGREEMENT NO.
 協議編號
 CE 20/2021

SHEET TITLE
 圖紙名稱
 CONTOUR OF PREDICTED 5-SECOND AVERAGE ODOUR CONCENTRATION AT 10 mAG (OU/m3)

SHEET NUMBER
 圖紙編號
 60670882/A34/FIGURE 3.26.5