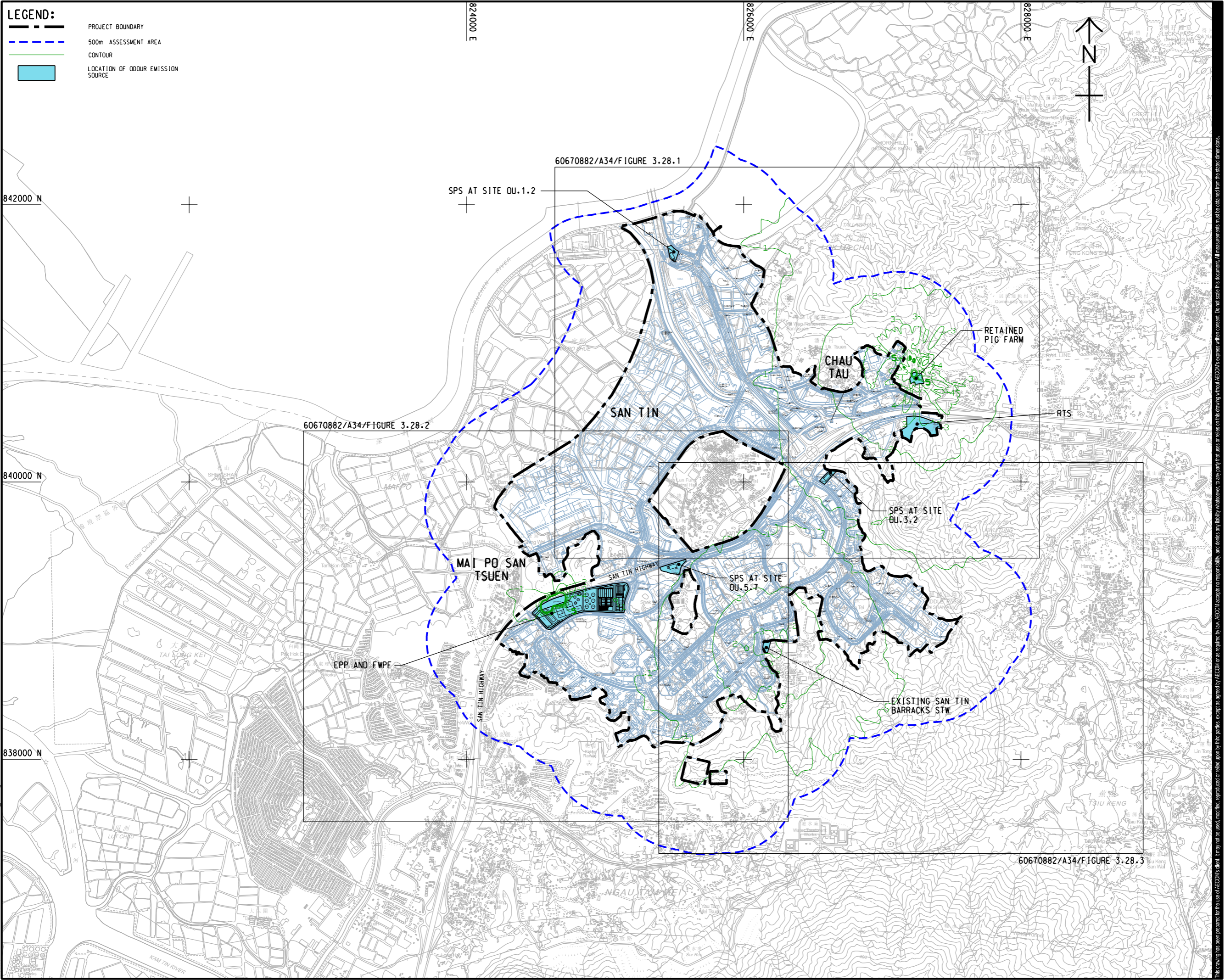


ISO A1 594mm x 841mm
 Approved:
 Checked:
 Designer:
 Project Management Initials:
 2023/12/20
 PATH P:\PROJECTS\60670882\DRAWING\REPORT\A34\A34_517.dwg
 This drawing has been prepared for the use of AECOM's client. It may not be used, modified, reproduced or relied upon by third parties, except as agreed by AECOM or as required by law. AECOM accepts no responsibility, and disclaims any liability, whatsoever, for any part, that less or more than this drawing, without AECOM's express written consent. Do not scale this document. All measurements must be obtained from the sheet dimensions.



LEGEND:

- PROJECT BOUNDARY
- 500m ASSESSMENT AREA
- CONTOUR
- LOCATION OF ODOUR EMISSION SOURCE



PROJECT
 項目
 FIRST PHASE DEVELOPMENT OF THE NEW TERRITORIES NORTH – SAN TIN / LOK MA CHAU DEVELOPMENT NODE – INVESTIGATION

CLIENT
 業主
 土木工程拓展署
 Civil Engineering and Development Department
 規劃署
 Planning Department

CONSULTANT
 土庫顧問公司
 AECOM Asia Company Ltd.
 www.aecom.com

SUB-CONSULTANTS
 分判工程師有限公司

ISSUE/REVISION
 修訂

I/R	DATE	DESCRIPTION	CHK.
修訂	日期	內容摘要	核校

STATUS
 階段

SCALE
 比例
 A3 1 : 25000

DIMENSION UNIT
 尺寸單位
 METRES

KEY PLAN
 索引圖

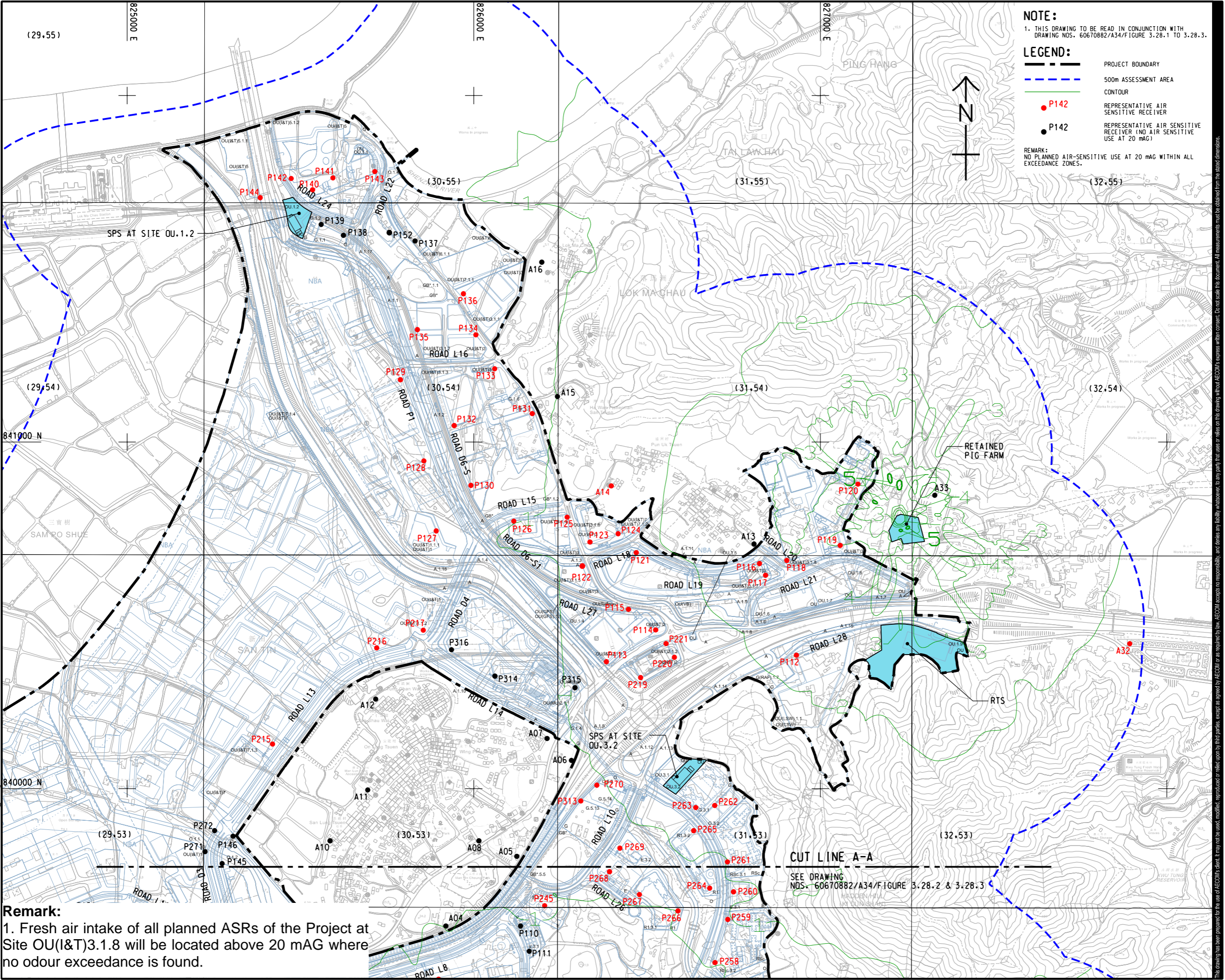
PROJECT NO.
 項目編號
 60670882

AGREEMENT NO.
 協議編號
 CE 20/2021

SHEET TITLE
 圖紙名稱
 CONTOUR OF PREDICTED 5-SECOND AVERAGE ODOUR CONCENTRATION AT 20 mAG (OU/m3) (KEY PLAN)

SHEET NUMBER
 圖紙編號
 60670882/A34/FIGURE 3.28

ISO A1 594mm x 841mm
 Approved:
 Checked:
 Designer:
 Project Management Initials:
 14/2024
 Yang JB
 60670882/DR/REPORT/A34/A34_516.dgn
 This drawing has been prepared for the use of AECOM's client. It may not be used, modified, reproduced or relied upon by third parties, except as agreed by AECOM or as required by law. AECOM accepts no responsibility, and disclaims any liability, whatsoever, to any party, that uses or relies on this drawing without AECOM's express written consent. All measurements must be obtained from the stated dimensions.



NOTE:
 1. THIS DRAWING TO BE READ IN CONJUNCTION WITH DRAWING NOS. 60670882/A34/F FIGURE 3.28.1 TO 3.28.3.

LEGEND:

- PROJECT BOUNDARY
- 500m ASSESSMENT AREA
- CONTOUR
- P142 REPRESENTATIVE AIR SENSITIVE RECEIVER
- P142 REPRESENTATIVE AIR SENSITIVE RECEIVER (NO AIR SENSITIVE USE AT 20 mAG)

REMARK:
 NO PLANNED AIR-SENSITIVE USE AT 20 mAG WITHIN ALL EXCEEDANCE ZONES.

AECOM

PROJECT
 項目
 FIRST PHASE DEVELOPMENT OF THE NEW TERRITORIES NORTH – SAN TIN / LOK MA CHAU DEVELOPMENT NODE – INVESTIGATION

CLIENT
 業主
 土木工程拓展署
 Civil Engineering and Development Department
 規劃署
 Planning Department

CONSULTANT
 工程顧問公司
 AECOM Asia Company Ltd.
 www.aecom.com

SUB-CONSULTANTS
 分門工程顧問公司

ISSUE/REVISION
 修訂

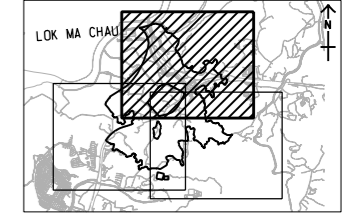
IR	DATE	DESCRIPTION	CHK.

STATUS
 階段

SCALE
 比例
 A3 1:10000

DIMENSION UNIT
 尺寸單位
 METRES

KEY PLAN A3 1:200000



PROJECT NO.
 項目編號
 60670882

AGREEMENT NO.
 協議編號
 CE 20/2021

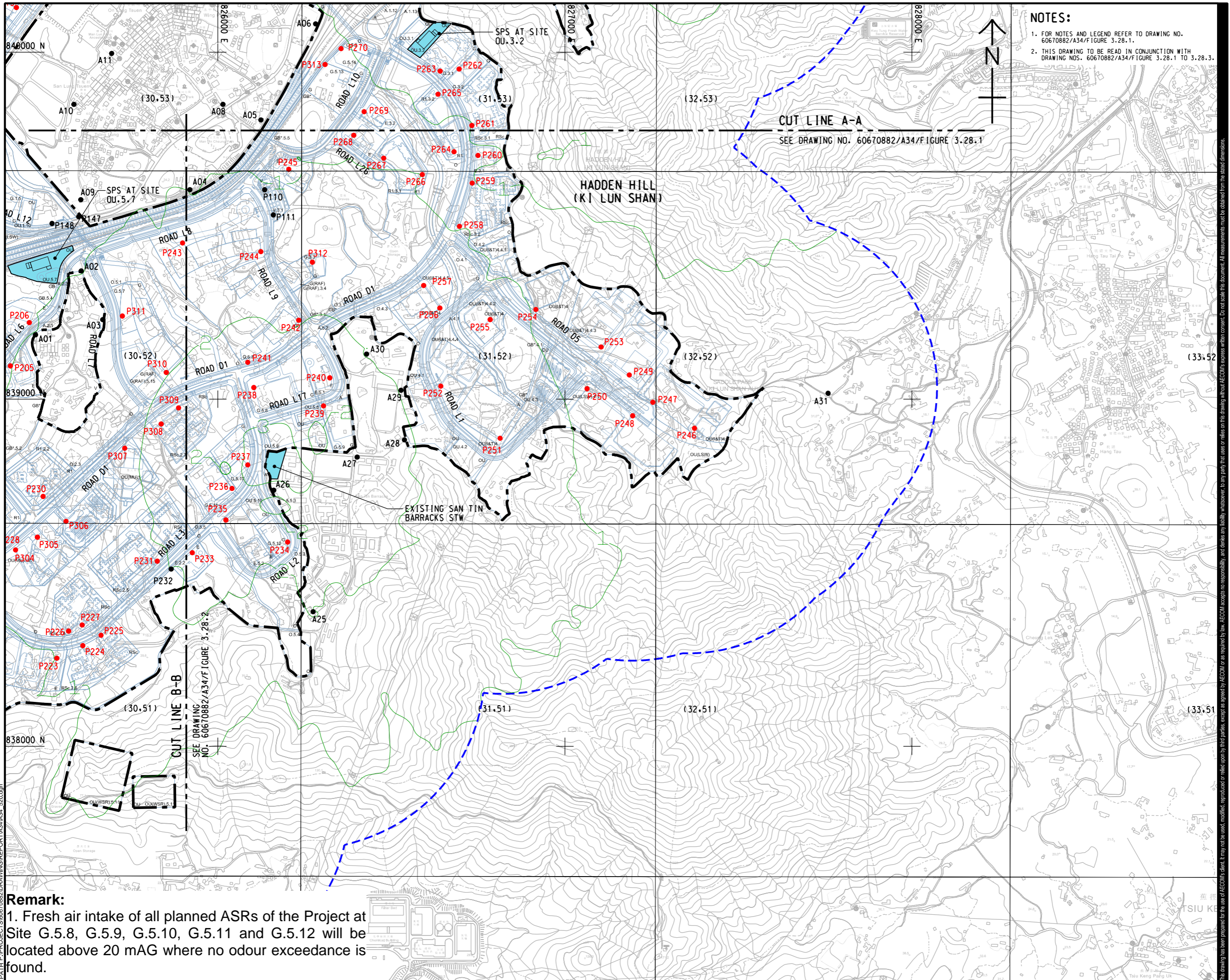
SHEET TITLE
 圖則名稱
 CONTOUR OF PREDICTED 5-SECOND AVERAGE ODOUR CONCENTRATION AT 20 mAG (OU/m3)

SHEET NUMBER
 圖則編號
 60670882/A34/FIGURE 3.28.1

SHEET 1 OF 3

Remark:
 1. Fresh air intake of all planned ASRs of the Project at Site OU(I&T)3.1.8 will be located above 20 mAG where no odour exceedance is found.

ISO A1 594mm x 841mm
 Approved: _____
 Checked: _____
 Designer: _____
 Project Management Initials: _____
 2023/12/20
 PATH PROJECTS/60670882/DRAWINGREPORT/A34/A34_520.dgn
 Plot File by: LIO



NOTES:

- FOR NOTES AND LEGEND REFER TO DRAWING NO. 60670882/A34/FIGURE 3.28.1.
- THIS DRAWING TO BE READ IN CONJUNCTION WITH DRAWING NOS. 60670882/A34/FIGURE 3.28.1 TO 3.28.3.

AECOM

PROJECT
 項目
FIRST PHASE DEVELOPMENT OF THE NEW TERRITORIES NORTH – SAN TIN / LOK MA CHAU DEVELOPMENT NODE – INVESTIGATION

CLIENT
 業主
 **土木工程拓展署**
 Civil Engineering and Development Department
 **規劃署**
 Planning Department

CONSULTANT
 工程顧問公司
 AECOM Asia Company Ltd.
 www.aecom.com

SUB-CONSULTANTS
 分判工程顧問公司

ISSUE/REVISION
 修訂

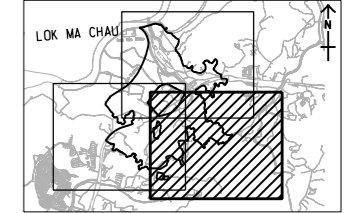
IR	DATE	DESCRIPTION	CHK.

STATUS
 階段

SCALE
 比例
 A3 1:10000

DIMENSION UNIT
 尺寸單位
 METRES

KEY PLAN A3 1:20000
 索引圖



PROJECT NO.
 項目編號
 60670882

AGREEMENT NO.
 協議編號
 CE 20/2021

SHEET TITLE
 圖紙名稱
CONTOUR OF PREDICTED 5-SECOND AVERAGE ODOUR CONCENTRATION AT 20 mAG (OU/m3)

SHEET 3 OF 3

SHEET NUMBER
 圖紙編號
 60670882/A34/FIGURE 3.28.3

Remark:

- Fresh air intake of all planned ASRs of the Project at Site G.5.8, G.5.9, G.5.10, G.5.11 and G.5.12 will be located above 20 mAG where no odour exceedance is found.

This drawing has been prepared for the use of AECOM's client. It may not be used, modified, reproduced or relied upon by third parties, except as agreed by AECOM or as required by law. AECOM accepts no responsibility, and denies any liability, whatsoever, for any part, that, in or on this drawing, without AECOM's express written consent. All measurements must be obtained from the stated dimensions.