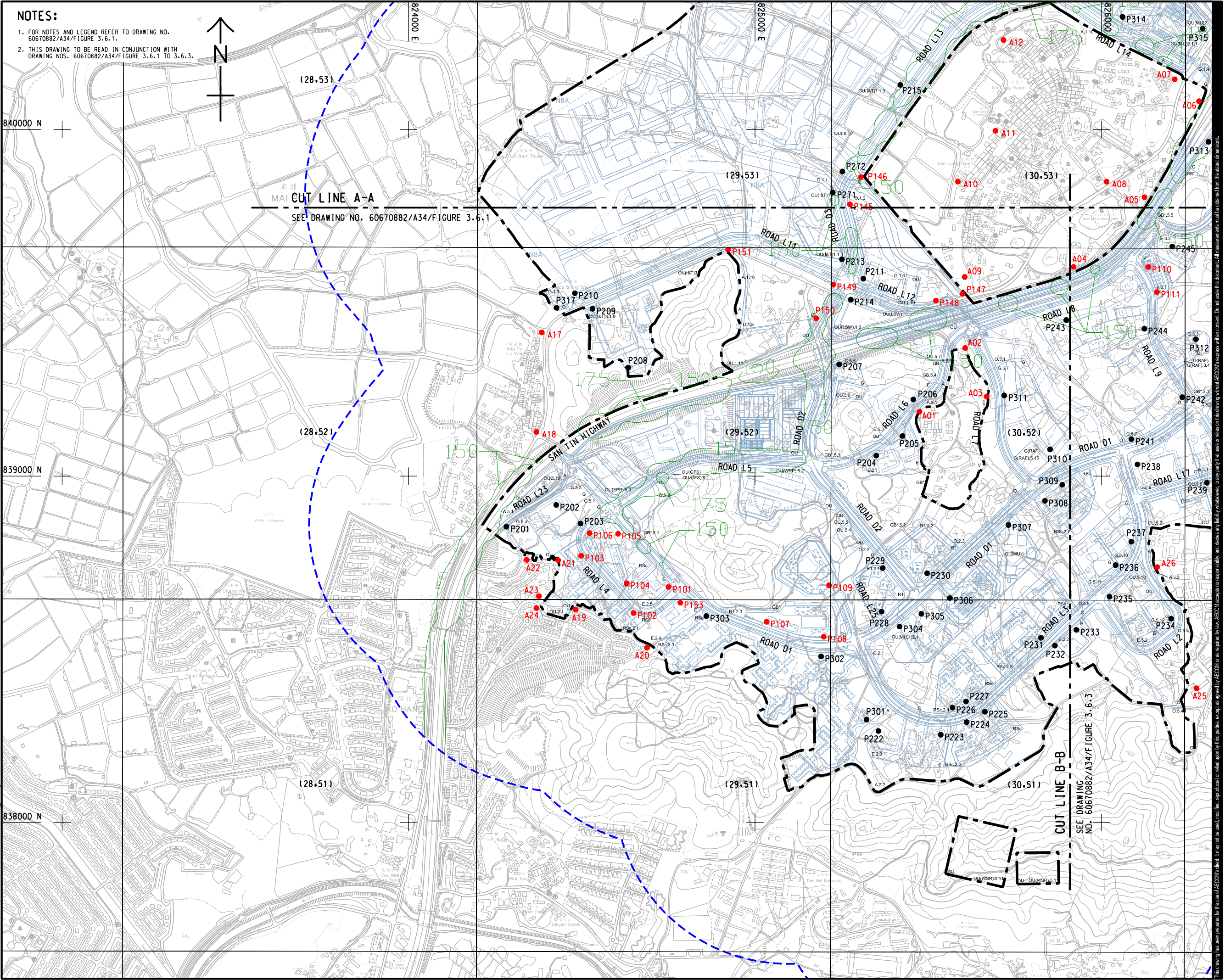


ISO A1 594mm x 841mm
Approved:
Checked:
Designer:
Project Management Initials:
Plot File by: YangJ8
PATH: P:\PROJECTS\60670882\DRAWING\REPORT\A3\A34_424.dgn

NOTES:
1. FOR NOTES AND LEGEND REFER TO DRAWING NO. 60670882/A34/Figure 3.6.1.
2. THIS DRAWING TO BE READ IN CONJUNCTION WITH DRAWING NOS. 60670882/A34/Figure 3.6.1 TO 3.6.3.



AECOM

PROJECT
項目
FIRST PHASE DEVELOPMENT OF THE NEW TERRITORIES NORTH – SAN TIN / LOK MA CHAU DEVELOPMENT NODE – INVESTIGATION

CLIENT
業主
CEDD 土木工程拓展署
Civil Engineering and Development Department
規劃署 Planning Department

CONSULTANT
顧問公司
AECOM Asia Company Ltd.
www.aecom.com

SUB-CONSULTANTS
分判工程師/顧問公司

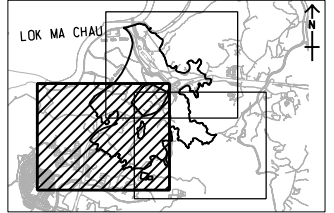
ISSUE/REVISION
項目

IR	DATE	DESCRIPTION	CHK.

STATUS
階段

SCALE 比例
A3 1:10000
DIMENSION UNIT 尺寸單位
METRES

KEY PLAN 索引圖
A3 1:200000



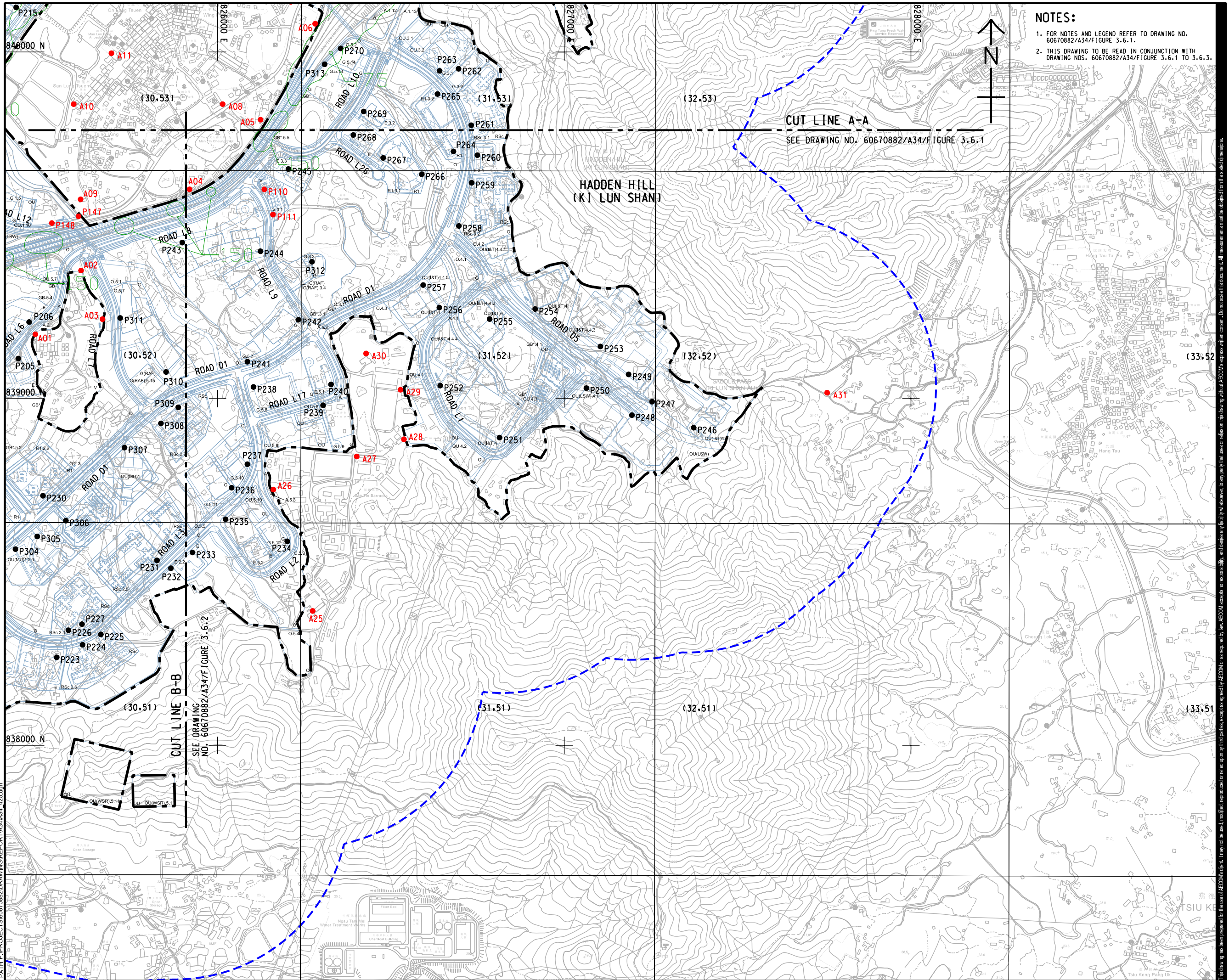
PROJECT NO. 項目編號
60670882
AGREEMENT NO. 協議編號
CE 20/2021

SHEET TITLE 圖紙名稱
CONTOUR OF PREDICTED 19TH HIGHEST CUMULATIVE HOURLY NO2 CONCENTRATION AT 1.5 mAG (ug/m3) (YEAR 2031) SHEET 2 OF 3

SHEET NUMBER 圖紙編號
60670882/A34/FIGURE 3.6.2

This drawing has been prepared for the use of AECOM's client. It may not be used, modified, reproduced or relied upon by third parties, except as agreed by AECOM in writing. AECOM accepts no responsibility, and disclaims any liability, whatsoever, for any part, that less or more than AECOM's express written consent. All measurements must be obtained from the stated dimensions.

ISO A1 594mm x 841mm
 Approved:
 Checked:
 Designer:
 Project Management Initials:
 Photo File by: Yuxuan, the 11/30/2023
 PATH P:\PROJECTS\60670882\DRAWING\REPORT\A34\A34_425.dgn
 This drawing has been prepared for the use of AECOM's client. It may not be used, modified, reproduced or relied upon by third parties, except as agreed by AECOM or as required by law. AECOM accepts no responsibility, and denies any liability whatsoever, for any party that assesses or relies on this drawing without AECOM's express written consent. All measurements must be obtained from the stated dimensions.



NOTES:

- FOR NOTES AND LEGEND REFER TO DRAWING NO. 60670882/A34/FIGURE 3.6.1.
- THIS DRAWING TO BE READ IN CONJUNCTION WITH DRAWING NOS. 60670882/A34/FIGURE 3.6.1 TO 3.6.3.

AECOM

PROJECT
 項目
FIRST PHASE DEVELOPMENT OF THE NEW TERRITORIES NORTH – SAN TIN / LOK MA CHAU DEVELOPMENT NODE – INVESTIGATION

CLIENT
 業主
 **土木工程拓展署**
 Civil Engineering and Development Department
 **規劃署**
 Planning Department

CONSULTANT
 顧問公司
 AECOM Asla Company Ltd.
 www.aecom.com

SUB-CONSULTANTS
 分判工程師/公司

ISSUE/REVISION
 修訂

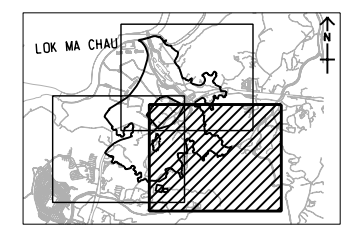
I/R	DATE	DESCRIPTION	CHK.

STATUS
 階段

SCALE
 比例
 A3 1:10000

DIMENSION UNIT
 尺寸單位
 METRES

KEY PLAN A3 1:20000
 索引圖



PROJECT NO.
 項目編號
 60670882

AGREEMENT NO.
 協議編號
 CE 20/2021

SHEET TITLE
 圖紙名稱
CONTOUR OF PREDICTED 19TH HIGHEST CUMULATIVE HOURLY NO2 CONCENTRATION AT 1.5 mAG (ug/m3) (YEAR 2031) SHEET 3 OF 3

SHEET NUMBER
 圖紙編號
 60670882/A34/FIGURE 3.6.3