

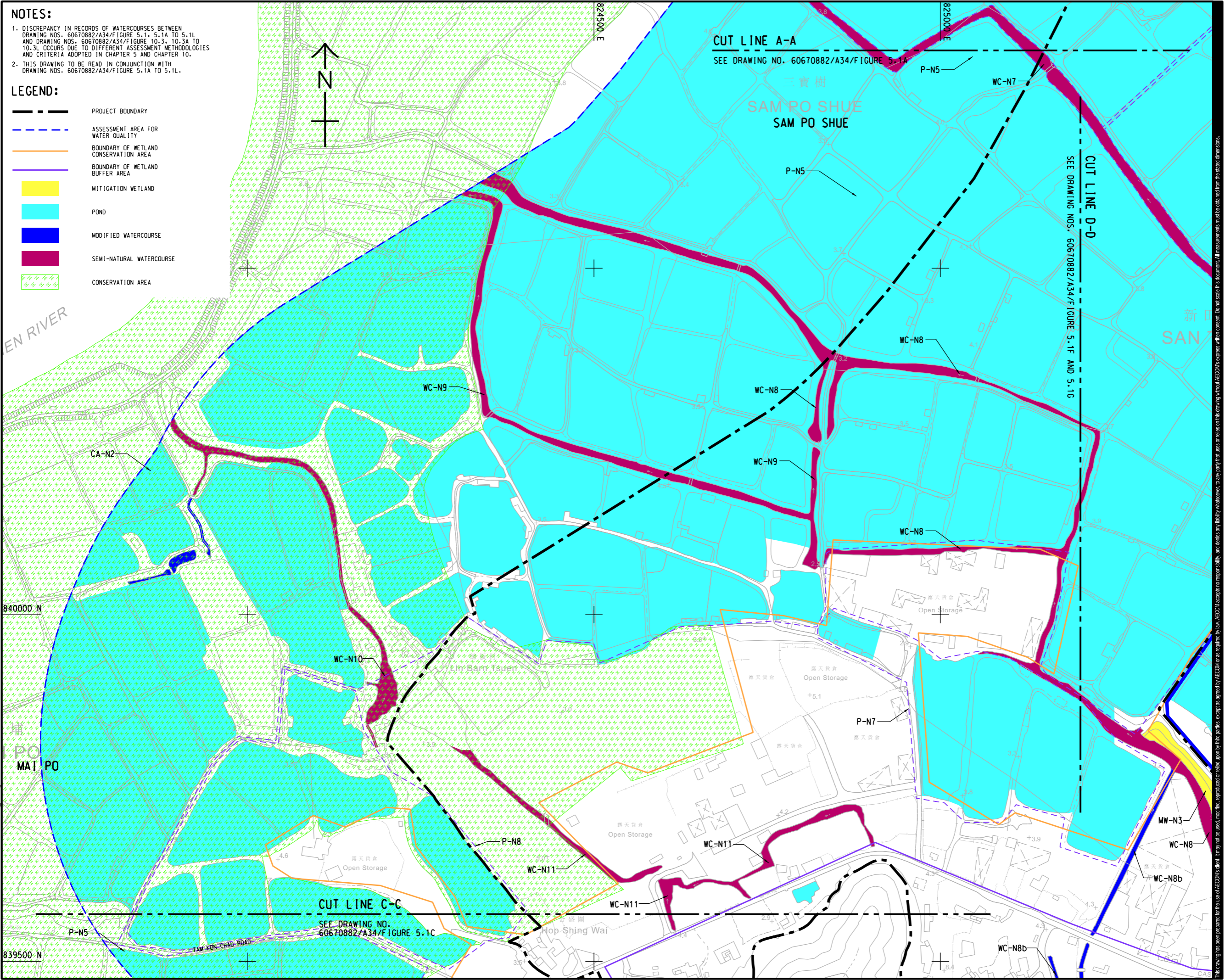
ISO A1 594mm x 841mm
 Approved:
 Checked:
 Designer:
 Project Management Initials:

NOTES:


- DISCREPANCY IN RECORDS OF WATERCOURSES BETWEEN DRAWING NOS. 60670882/A34/F/FIGURE 5.1, 5.1A TO 5.1L AND DRAWING NOS. 60670882/A34/F/FIGURE 10.3, 10.3A TO 10.3L OCCURS DUE TO DIFFERENT ASSESSMENT METHODOLOGIES AND CRITERIA ADOPTED IN CHAPTER 5 AND CHAPTER 10.
- THIS DRAWING TO BE READ IN CONJUNCTION WITH DRAWING NOS. 60670882/A34/F/FIGURE 5.1A TO 5.1L.

LEGEND:

-  PROJECT BOUNDARY
-  ASSESSMENT AREA FOR WATER QUALITY
-  BOUNDARY OF WETLAND CONSERVATION AREA
-  BOUNDARY OF WETLAND BUFFER AREA
-  MITIGATION WETLAND
-  POND
-  MODIFIED WATERCOURSE
-  SEMI-NATURAL WATERCOURSE
-  CONSERVATION AREA



PROJECT
 項目
 FIRST PHASE DEVELOPMENT OF THE NEW TERRITORIES NORTH – SAN TIN / LOK MA CHAU DEVELOPMENT NODE – INVESTIGATION

CLIENT
 業主
 土木工程拓展署
 Civil Engineering and Development Department
 規劃署
 Planning Department

CONSULTANT
 顧問公司
 AECOM Asia Company Ltd.
 www.aecom.com

SUB-CONSULTANTS
 分判工程師有限公司

ISSUE/REVISION
 修訂

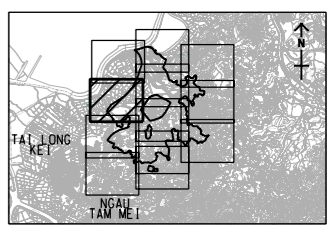
IR	DATE	DESCRIPTION	CHK.

STATUS
 階段

SCALE
 比例
 A3 1 : 5000

DIMENSION UNIT
 尺寸單位
 METRES

KEY PLAN A3 1 : 250000
 索引圖



PROJECT NO.
 項目編號
 60670882

AGREEMENT NO.
 協議編號
 CE 20/2021

SHEET TITLE
 圖紙名稱
 LOCATIONS OF WATER SENSITIVE RECEIVERS

SHEET NUMBER
 圖紙編號
 60670882/A34/FIGURE 5.1B

SHEET 2 OF 12

This drawing has been prepared for the use of AECOM's client. It may not be used, modified, reproduced or relied upon by third parties, except as agreed by AECOM or as required by law. AECOM accepts no responsibility, and denies any liability whatsoever, for any part, that less or more than this drawing, without AECOM's express written consent. All measurements must be obtained from the stated dimensions.